



LANBAO PSE-YC Series Optical Sensor Instruction Manual

[Home](#) » [LANBAO](#) » LANBAO PSE-YC Series Optical Sensor Instruction Manual 

LANBAO PSE-YC Series Optical Sensor



Contents

- [1 Precautions](#)
- [2 Safety Warning](#)
- [3 Scrap Treatment](#)
- [4 Distance Adjustment](#)
- [5 Technical specifications](#)
- [6 Accessory Dimensions\(Sold Separately\)](#)
- [7 Dimensions](#)
- [8 Terminal Wiring Diagram](#)
- [9 Wiring diagram](#)
- [10 Mounting](#)
- [11 CUDTOMER SUPPORT](#)
- [12 Documents / Resources](#)
 - [12.1 References](#)
- [13 Related Posts](#)

Precautions

- Please make sure that the power supply voltage is within the rated value before powering on.
- The time from powering-on to normal detection of the sensor is 100 ms, please ensure that the sensor is used after 100 ms of powering on.
- When using different power sources for the sensor and load, be sure to turn on the power of the sensor first .
- When the sensor is not used, it is recommended to cut off the power of the load first and then turn off the power of the sensor .
- Do not subject the sensor to severe external forces (such as hammer hits, etc.) during installation, so as not to damage the sensor performance .
- Avoid using thinner, alcohol or other organic solvents when cleaning.

Safety Warning

- Do not use in an environment with flammable, explosive or corrosive gases.
- Do not use in oil or chemical environments.
- Do not use in a high humidity environment.
- Do not use in direct sunlight.
- Do not use in other environmental conditions that exceed the rated value.
- Do not disassemble, repair or modify this product without authorization.

Scrap Treatment

- When the product is scrapped, please dispose of it as industrial waste.

Distance Adjustment

1. Turn the sensitivity adjuster fully.
BGS function: Counterclockwise



BGS

FGS function: Clockwise

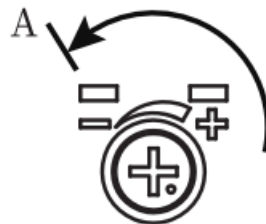


FGS

2. BGS function: In the object present condition, turn the sensitivity adjuster and confirm the point A where the sensor enters the sensing state. FGS function: In sensing back-ground condition, turn the sensitivity adjuster and confirm the point A where the sensor enters the non-sensing state.



BGS



FGS

3. BGS function: After removing the sensing object, turn the sensitivity adjuster and confirm the point B where the sensor enters the non-sensing state. FGS function: In the object present condition, turn the sensitivity adjuster and confirm the point B where the sensor enters the sensing state.

(If the sensor does not enter the "Light" state operation even when the sensing adjuster is turned fully clockwise, the position is point B.)

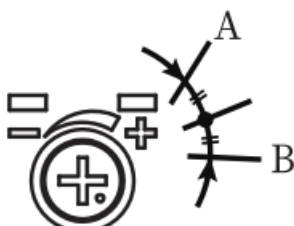


BGS



FGS

4. The optimum position to stably detect objects is the center point between A and B.



BGS



FGS

Technical specifications

Detection type		Background suppression							
		NPN NO	NPN NC	PNP NO	PNP NC	NPN	PNP	NPN	PNP
Format	Cable	PSE-YC5 DNOR	PSE-YC5 DNCR	PSE-YC5 DPOR	PSE-YC5 DPCR	PSE-YC2 5DNBR	PSE-YC2 5DPBR	PSE-YC3 5DNBR	PSE-YC3 5DPBR
	Connector	PSE-YC5 DNOR-E3	PSE-YC5 DNCR-E3	PSE-YC5 DPOR-E3	PSE-YC5 DPCR-E3	PSE-YC2 5DNBR-E3	PSE-YC2 5DPBR-E3	PSE-YC3 5DNBR-E3	PSE-YC3 5DPBR-E3
Sensing distance		0,2...5cm				0,5...25cm		0,5...35cm	
Return difference		2%				10%			
Distance adjustment		5-turn knob adjustment							
Light source		Red light(630nm)							
Light spot size		ø 2 mm (5 cm)				ø 6 mm (25 cm)			
Supply voltage		10...30 V DC							
Consumption current		≤20mA							
Load current		≤100mA							
Voltage drop		≤2V							
Circuit protection		Short circuit, Reverse polarity, Overload, Zener protection							

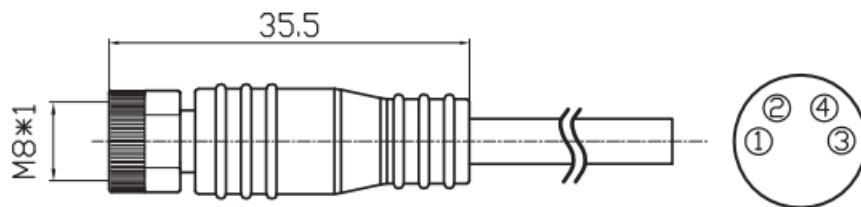
BGS/FGS Switch	The white wire connected to the positive electrode or floating is BGS, and the white wire connected to the negative electrode is FGS	/
NO/NC Switch	/	The white wire connected to the positive electrode or floating is NO, and the white wire connected to the negative electrode is NC
Response time	≤0,5ms	≤1ms
Indicator	Green: Power indicator; Yellow: Output, overload or short circuit	
Anti-ambient light	Sunlight interference ≤ 10,000 lux; Anti incandescent light interference ≤ 3,000 lux	
Ambient temperature	-25°C...55°C	
Storage temperature	-25°C...70°C	
Protection degree	IP67	
Certification	CE	
Material	PC+ABS	
Lens	PMMA	
Weight	Cable: about 50g; Connector: about 10g	
Accessories	Screw ×2, Mounting bracket ZJP-8, Operation manual	

Note: The standard detection target is a white card of 20cm*20cm(90% reflectivity)

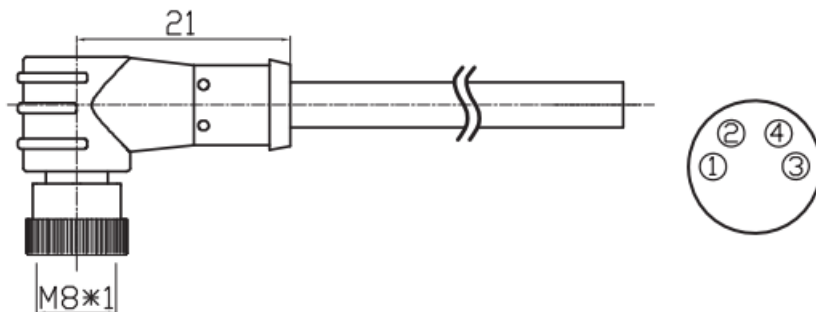
Accessory Dimensions(Sold Separately)

The following accessories need to be ordered additionally except for the ZJP-8 type mounting bracket.

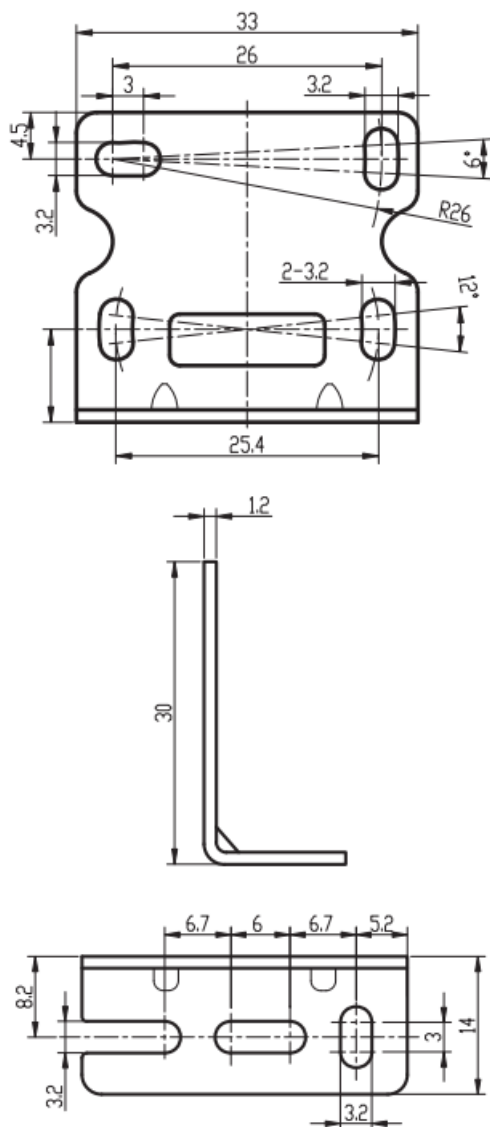
M8 Connector: CS S48L-3-2



M8 Connector: CS S49L-3-2

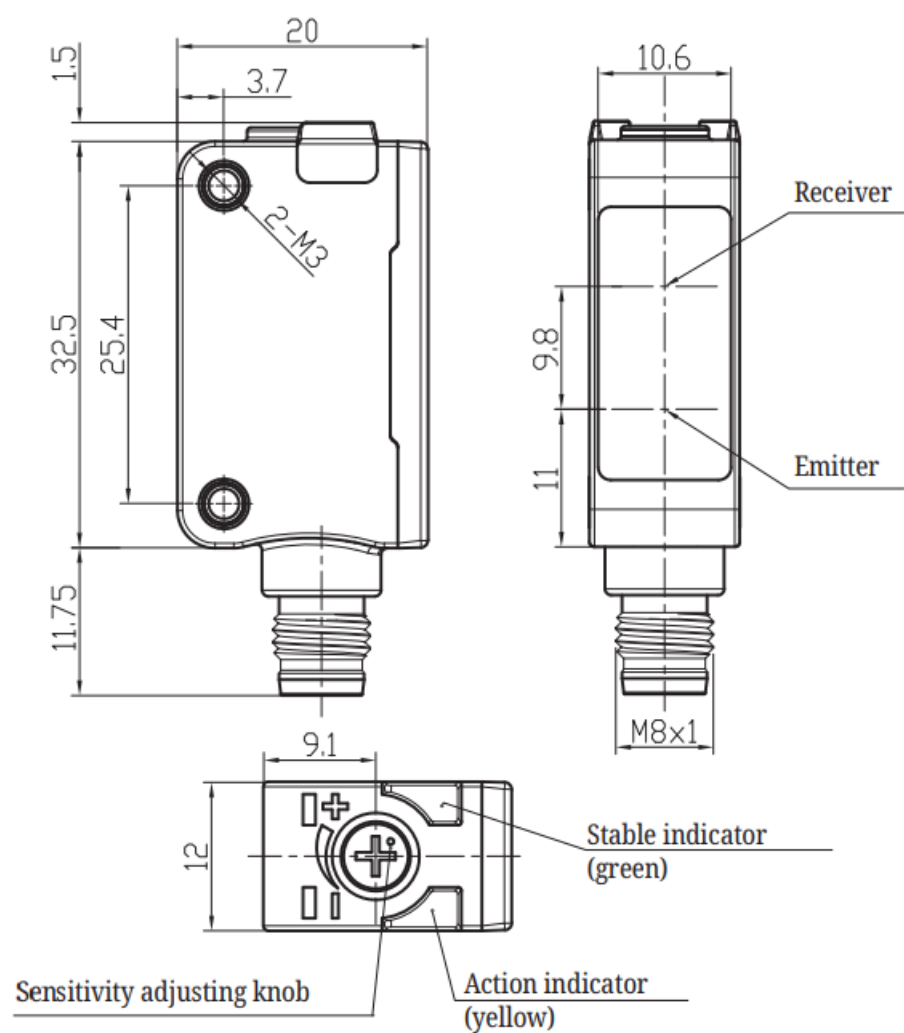


Mounting Bracket: ZJP-8 (accessory)

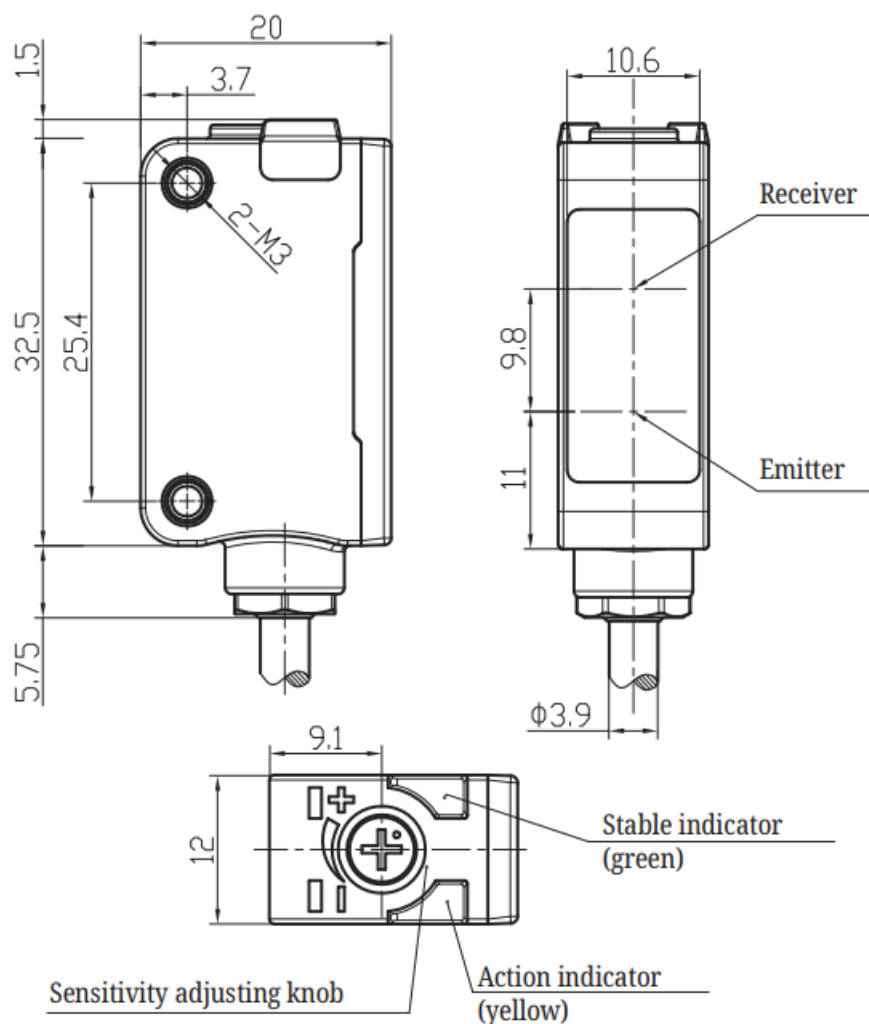


Dimensions

Background Suppression-Connector

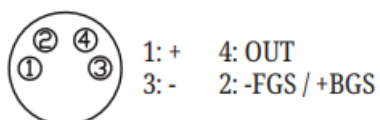


Background Suppression-Cable



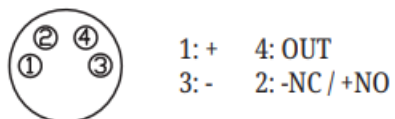
Terminal Wiring Diagram

PSE-YC5



BN: + BK: OUT
BU: - WH: -FGS / +BGS

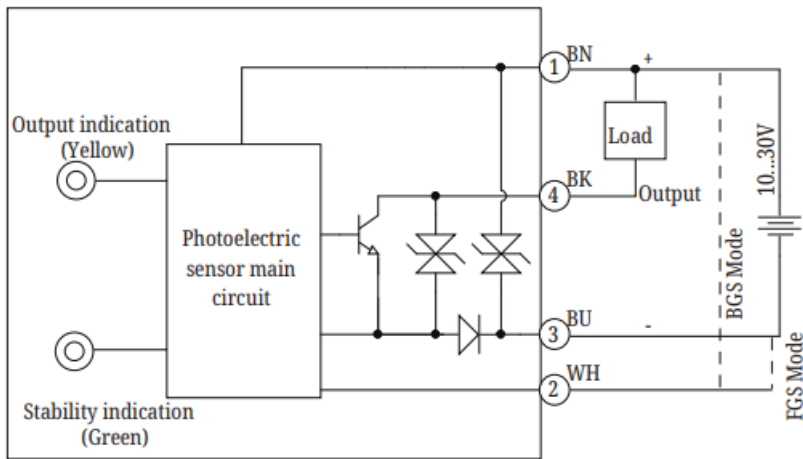
PSE-YC25, YC35



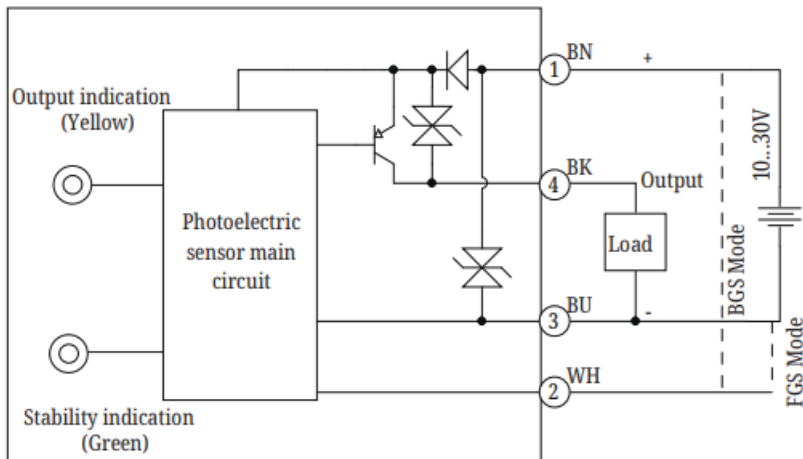
BN : + BK : OUT
BU : - WH : -NC/+NO

Wiring diagram

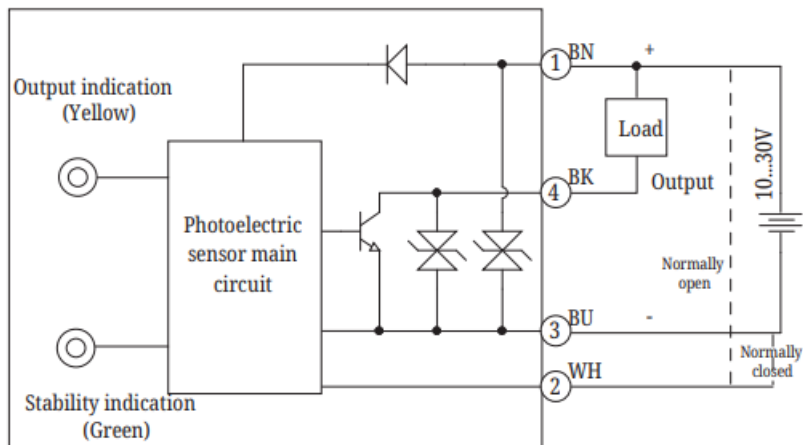
PSE-YC5(NPN Output)



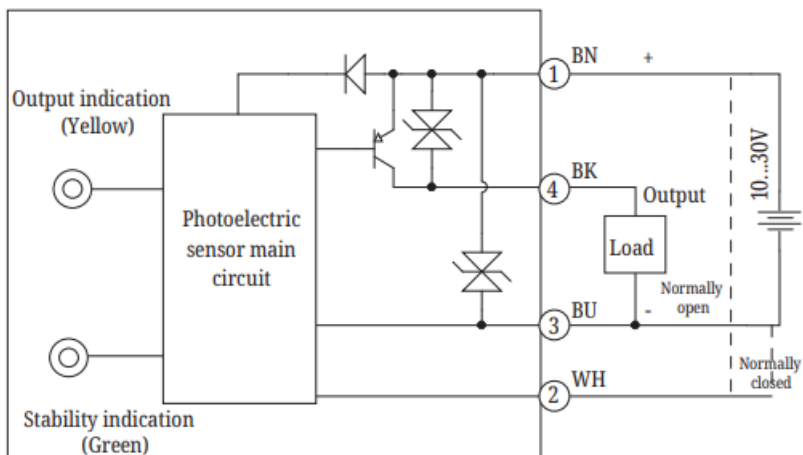
PSE-YC5(PNP Output)



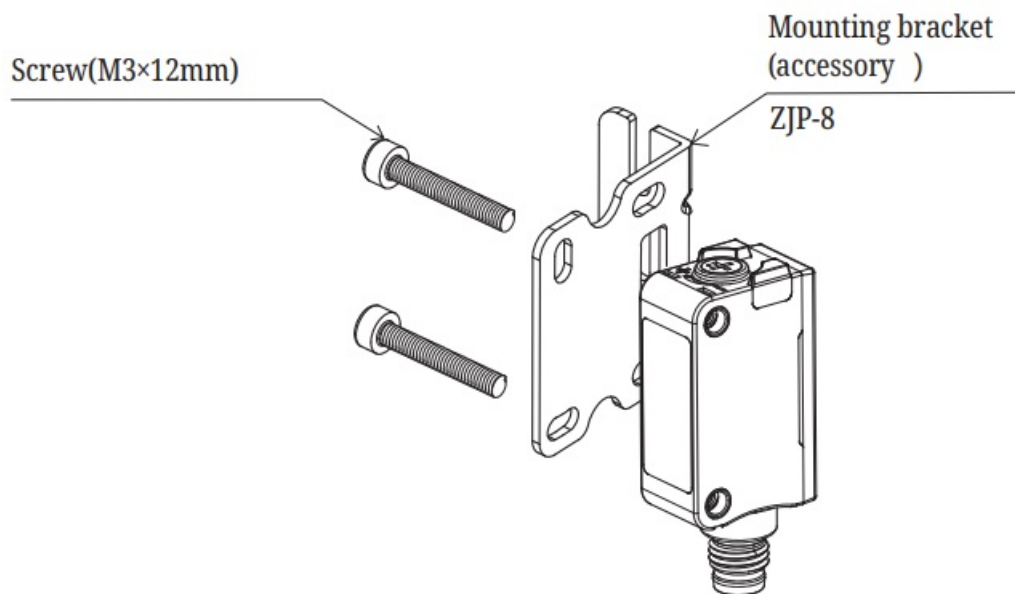
PSE-YC25, YC35(NPN Output)



PSE-YC25, YC35(PNP Output)



Mounting



Note: When installing this product, please keep the tightening torque below 0,5 N·m.

CUSTOMER SUPPORT



eko-com.ru

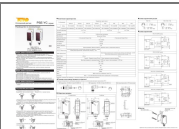
Tel.: 8 (800) 333-70-75

E-mail: sale@teko-com.ru



Photoelectric sensor

Documents / Resources



[LANBAO PSE-YC Series Optical Sensor](#) [pdf] Instruction Manual
PSE-YC Series, PSE-YC Series Optical Sensor, Optical Sensor, Sensor

References

- [О фонде | Foundation for Assistance for Internet Technologies and Infrastructure Development](#)
- [НПК «ТЕКО» - датчики, бесконтактные выключатели, приборы и средства автоматизации от производителя в Челябинске](#)