

Lanaform Eclipse Essential Oils Diffuser



Lanaform Eclipse Essential Oils Diffuser User Manual

[Home](#) » [LANAFORM](#) » Lanaform Eclipse Essential Oils Diffuser User Manual 

Contents

- [1 Lanaform Eclipse Essential Oils Diffuser User Manual](#)
- [2 Precautionary statement](#)
- [3 Introduction](#)
- [4 Instructions for use](#)
- [5 Maintenance and storage](#)
- [6 Technical data](#)
- [7 Limited warranty](#)
- [8 References](#)
- [9 Related Posts](#)

LANAFORM

Lanaform Eclipse Essential Oils Diffuser User Manual



Precautionary statement

Please read all the instructions before using your product, especially these basic safety guidelines. Always place the device on a hard, flat, horizontal surface inside your home. Keep it away from walls and heat sources such as stoves, radiators, etc.

Caution

If it is not placed on a horizontal surface, it may not work properly. Check that your mains voltage is the same as that of your appliance. Do not connect or disconnect the plug with wet hands. If the power cable is damaged, it must be replaced by a similar cable available from the supplier or the supplier's after-sales department. Do not leave the device in the sun for a long period of time. Do not dismantle the device completely. Do not lift the glass cover when the device is on.

If you notice a suspicious smell or sound, switch the device off immediately and consult the "Troubleshooting" section of these instructions for use. If the problem persists, have it examined by the supplier or its after-sales department. Do not use essential oils that are not recommended for diffusion. To do this, consult the instructions for using the essential oils in these instructions for use. Do not use perfumes or synthetic essences as this may damage the device. Unplug the device before cleaning it.

Use only the AC adapter supplied with this device. The supplied adapter should only be used with the device and not for other purposes. Do not wash the entire unit with water and do not immerse it. Consult the cleaning instructions in these instructions for use. Do not use chemicals (such as acids, alkalis, etc.) or corrosive detergents to clean the device. Never scrape the transducer with a hard tool. Refer to the cleaning instructions in this manual. Be sure to never empty the water from the reservoir into the air outlets, as this will damage the diffuser. Empty the water in the opposite direction of the air outlet. For optimal maintenance, use mineral water.

Do not fill above the line indicating the maximum water level. Always add water before adding essential oils. Do not use essential oils without diluting them in water. This device is not intended to be used by people, including children, with reduced physical, sensory or mental capabilities, or people with lack of experience or knowledge, unless they are supervised or instructed on the use of the device by a person responsible for their safety.

Children should be supervised to make sure they do not play with the device. Use this device only for its intended purpose, as described in these instructions for use. The photographs and other images of the product in this manual and on the packaging are as accurate as possible, but do not claim to be a perfect reproduction of the product.

Introduction

Thank you for choosing the "Eclipse" diffuser by LANAFORM. Thanks to its variable intensity light and sleep aid function, the Eclipse essential oil diffuser invites rest and relaxation while enjoying the benefits of aromatherapy. Designed from noble materials (opaline glass and oxidized metal base), the Eclipse diffuser offers a modern, sleek design that will easily adapt to all current trends.

Device components

1. Mist outlet
2. Opaline glass cover
3. Internal reservoir cover
4. Air outlet cover
5. Water reservoir
6. Air outlet
7. Transducer

8. DC jack socket
9. Metal base
- 10 Button for adjusting diffusion, light and timer
- 11 Timer indicator lights

Instructions for use

Characteristics

- Ultrasound diffuser
- Aluminium base
- Opaline glass cover
- 280 ml capacity
- Emission intensity (15-20ml/h)
- Continuous or cyclical diffusion (30"ON/30"OFF)
- Timer function (1, 3, 8 hours)
- Warm white light
- Variable light intensity
- Sleep aid
- Diffusion-independent light
- Auto shut-off

Preparation

1. Place the Eclipse diffuser in the room half an hour before turning it on so that it can adjust to the room temperature.
2. Ensure that it is always placed on a hard, flat and horizontal surface.
3. Make sure the device is clean before starting to use it.
4. Remove the glass cover (1).
5. Then remove the reservoir cover (2).
6. Pour fresh, preferably demineralised water into the reservoir and do not exceed the maximum level (3).
7. Pour 3 or 4 drops of essential oil into the water (4).
8. Replace the reservoir cover then the glass cover (5).
9. Make sure your hands are completely dry when connecting (and even disconnecting) the device (6).
10. The diffuser is now operational.

Instructions for use

Adjusting the diffusion and timer:

- Press the button for adjusting the diffusion, lighting and timer once (Fig. 1, point 10) to start diffusion.
- It operates in continuous diffusion mode by default; three indicators light up (1). Press the button a second time to program diffusion for 1 hour; the top indicator light will switch on (2).
- Press the button a third time to program diffusion for 3 hours; the middle indicator light will switch on (3).
- Press the button a fourth time to program diffusion for 8 hours; the bottom indicator light will switch on (4).
- Press the button for stopping diffusion a fifth time; there are no longer any light indicators (5).
- To switch to intermittent diffusion mode (30 seconds ON; 30 seconds OFF), press the button for 2 seconds; the

three indicator lights will flash twice.

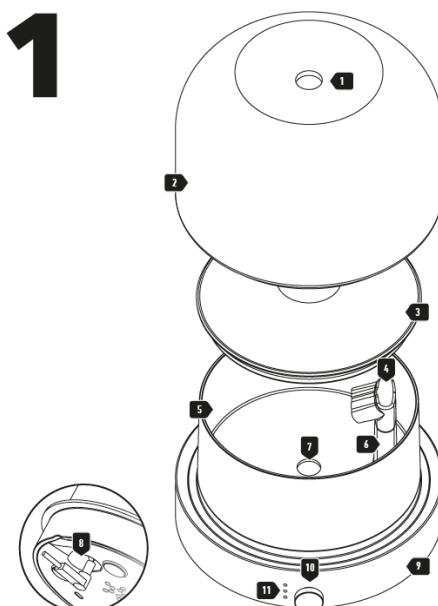
- Repeat this operation to return to continuous diffusion mode
- The timer is not interrupted when diffusion mode is changed. Continuous mode is activated once the mains power is unplugged.

Adjusting the Light Mode

- Turn the light adjustment button (Fig. 1, point 10) clockwise to activate the light and increase the intensity.
- Turn the light adjustment button (Fig. 1, point 10) anti-clockwise to reduce the light intensity and turn it off.
- By default, the light does not turn off when diffusion stops (either with the timer or with the automatic shut-off system when the reservoir is empty).
- However, it is possible to program the light according to the diffusion.
- To do this, press the button (Fig. 1, points 10) for 6 seconds until the “3 hr” and “8 hr” indicators flash alternately 3 times.
- To activate the light-dependent programming, press the button again for 6 seconds until the “1 hr” and “3 hr” lights flash alternately 3 times.
- The light operates independently once the mains plug is removed.

Sleep aid function:

- The sleep aid function will operate the lamp for 30 minutes by gradually reducing the intensity until it stops completely.
- To activate the function, press the button (Fig.1, point 10) and turn it clockwise or anti-clockwise. The 3 indicator lights will flash each one from the bottom to the top. (Fig.4, point 1)
- To disable the function, repeat the operation. The 3 lights will flash each one from the bottom to the top. (Fig.4, point 2)



- Once the help function is activated, the light intensity is activated at the maximum level before gradually reducing and turning off after 30 minutes.
- If you turn the light intensity button after turning on the function, the indicator light will flash once and the sleep help function will be disabled. even though there is a safety device that stops the transducer from working, do not leave the device plugged in when you are not using it.
- Additional information on the use of essential oils

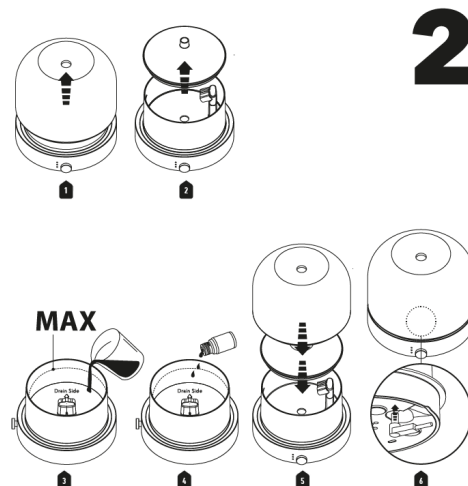
- Before using the essential oils, please check the harmful effects that use of these products may have on your health.
- Always choose quality essential oils: pure and 100% natural and intended for diffusion. Use them with moderation and care.
- Follow the instructions and warnings indicated on the packaging of the essential oils, in particular ensuring that:
- Pregnant women and people with epilepsy, asthma or allergies, heart problems or serious conditions must not use essential oils.
- Essential oils should only be used for periods not exceeding 10 minutes in a baby's room (- 3 years old) and only when the baby is not present in the room.
- Make sure that children and minors do not play with or use the device.
- Only a few drops (3 to 4 drops at most) of essential oils are sufficient to ensure the device works properly and the fragrance is diffused. Excessive use of essential oils could damage the device.
- First, pour the water into the reservoir before adding the drops of essential oils.
- Lanaform cannot be held liable in the event of accidental damage resulting from any use contrary to the instructions given in these instructions for use.

Maintenance and storage

When not using the diffuser, empty the water from the reservoir. Never empty the water from the reservoir on the side of the air outlet. If water enters the air outlet, it will damage the device! (Fig. 4)

To prevent this from happening

- Use a container to pour water into the reservoir.
- Do not shake the diffuser.
- Do not move the diffuser when there is water in the reservoir.
- In the event of accidental entry of water into the air outlet (Fig. 5, point 1), there is a safety measure to remove the water from the base of the diffuser:
- Disconnect the power cable from the diffuser.
- Completely empty the reservoir from the side opposite the air outlet.
- Bend the diffuser towards one of the drainage holes (Fig. 5, point 2) to empty the water.




- Leave the diffuser in a dry place for 24 hours.
- Always unplug the device with dry hands before cleaning it!

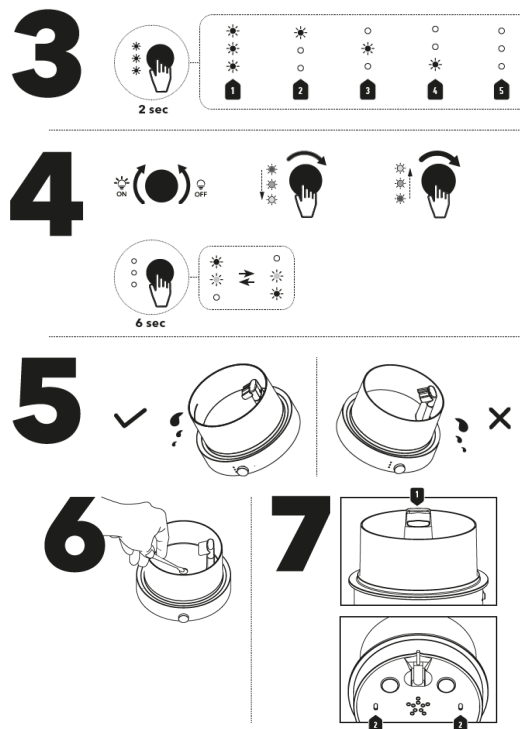
Maintenance

If the water contains too much calcium and magnesium, it may deposit a “white powder” in the device. If this foam is deposited on the transducer (Fig. 1, point 7), it will prevent the device from working properly.

We recommend

1. Using fresh, distilled or demineralised water for each use.
2.  Cleaning the reservoir every 3 days and cleaning the transducer every week.
3. Emptying and cleaning the device (see explanations below), as well as making sure that all its parts are completely dry when it is not in use.

To clean the transducer (Fig. 6)



Place 2 to 5 drops of vinegar on its surface and allow to stand for 2 to 5 minutes.

- Brush the foam off the surface with a soft brush or cotton swab. Do not use a hard tool to scrape the surface.
- Do not use soap, solvent or spray cleaner to clean the transducer.
- To clean the reservoir and reservoir cover:
- Use a soft cloth and vinegar if there are any foam or limescale deposits on the inside.
- Rinse with clean water.
- Never use products containing bleach to clean the device, but only dishwashing detergent or vinegar!
- Never immerse the base (Fig. 1, point 9) in water!

Storage

- Store the device in a dry, cool place out of reach of children after cleaning and drying.

Faults and remedies

No mist.	the diffuser is not plugged in.	Check that the device is plugged in and that there is no mains fault.
	The water level in the reservoir is too low.	Add water to the reservoir.
	Water leakage from the reservoir.	Check that the reservoir is in the right position.
	The temperature of the unit is too low.	Place the unit in a room at room temperature half an hour before use.
Mist has an unusual smell.	The water has been standing in the reservoir for too long.	Clean the reservoir and pour fresh, distilled or demineralised water into it.

Low intensity.	Too much/too little water in the reservoir.	Empty (add) the water from the reservoir.
	Sediment on the transducer.	Clean the transducer.
	The water is too cold.	Use room temperature water.
	Water is not clean.	Clean the reservoir and pour fresh, distilled or demineralised water into it.

- In case of malfunction, under normal conditions of use, please refer to the following list:

Technical data

- Reference: LA120324
- Power supply: DC 24V
- Consumption: 12 W
- Reservoir capacity: 280ml
- Emission rate: 15-20ml/hr
- Dimensions: 12.5*14.8*14.8 cm

Advice regarding the disposal of waste

All the packaging is composed of materials that pose no hazard for the environment and which can be disposed of at your local sorting centre to be used as secondary raw materials. The cardboard may be disposed of in a paper recycling bin. The packaging film must be taken to your local sorting and recycling centre. When you have finished using the device, please dispose of it in an environmentally friendly way and in accordance with the law.

Limited warranty

LANAFORM guarantees this product against any material or manufacturing defect for a period of two years from the date of purchase, except in the circumstances described below. The LANAFORM guarantee does not cover damage caused as a result of normal wear to this product. In addition, the guarantee covering this LANAFORM product does not cover damage caused by abusive or inappropriate or incorrect use, accidents, the use of unauthorized accessories, changes made to the product or any other circumstance, of whatever sort, that is outside LANAFORM's control.

LANAFORM may not be held liable for any type of circumstantial, indirect or specific damage. All implicit guarantees relating to the suitability of the product are limited to a period of two years from the initial date of purchase as long as a copy of the proof of purchase can be supplied. On receipt, LANAFORM will repair or replace your appliance at its discretion and will return it to you. The guarantee is only valid through LANAFORM's Service Centre. Any attempt to maintain this product by a person other than LANAFORM's Service Centre will render this guarantee void.

Download PDF: [Lanaform Eclipse Essential Oils Diffuser User Manual](#)

References

- [User Manual](#)