



Lamp Genius LI721762 Zephyr Touch Table Lamp Instruction Manual

[Home](#) » [Lamp Genius](#) » **Lamp Genius LI721762 Zephyr Touch Table Lamp Instruction Manual** 



Installation and Safety Instructions

LI721762 – Zephyr Touch Table Lamp, Brass, Glass, White Shade

Contents

- [1 Safety Warnings](#)
- [2 Care and maintenance](#)
- [3 Troubleshooting](#)
- [4 Assembly Instructions](#)
- [5 Documents / Resources](#)
- [5.1 References](#)

Safety Warnings

These instructions are for your safety. Please read through them thoroughly before use and retain them for future reference. If you are in any doubt about installing this product, consult a qualified electrician.

This product is only suitable for connection to a 220-240V~ 50Hz supply. It is for indoor use only, and not suitable for a bathroom location.

This fitting is a Class II, Double Insulated product and does not require an Earth. Live or Neutral must not be connected to Earth.

Do not attempt to plug in or use this product until it has been fully assembled. Disconnect from mains during assembly or maintenance. this product must be used on a stable, flat surface.

Under no circumstances must this lamp be covered with any material as this could pose a safety hazard.

This product is not suitable for persons under 14 years of age.

This product may contain delicate parts – be careful during handling and maintenance to avoid breakage.

This is a 3-stage touch lamp. Simply touch the base of the lamp to change brightness (Dim/Bright/Brightest).

PLEASE NOTE – A bulb with minimum wattage of 3W must be used for this table lamp to function correctly.

The lamp must be protected by a 3 amp fuse in the mains plug.

Never fit bulbs of a higher wattage than those specified on the label as these may damage the fitting.

Never put anything on the product or hang anything on any part of this product.

If the external flexible cable or cord of this luminaire is damaged, it must only be replaced by a qualified electrician to avoid any electrical hazards.

Waste electrical products should not be disposed of with household waste. Please recycle where facilities exist. Check with your Local Authority or local store for recycling advice.

Care and maintenance

For bulb replacement, switch off the product (preferably, isolate it at the distribution board) and allow it to cool down (Caution: bulb gets hot during use).

Clean with a dry cloth only. Do not use liquid or abrasive cleaners on this product.

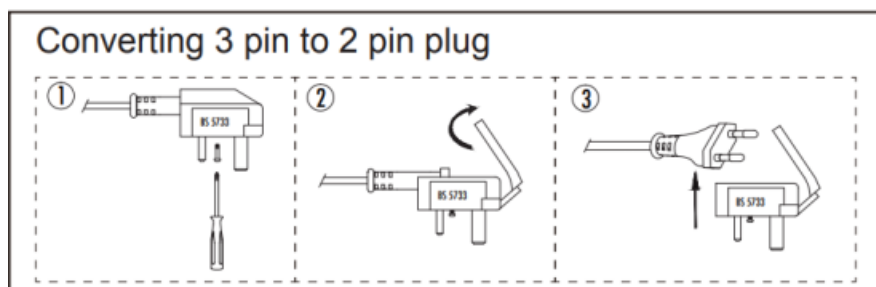
Troubleshooting

When the bulb does not light after installation:

- > Please plug in and operate the foot switch to turn your lamp on.
- > Please check the bulb.
- > Please check the 3 amp fuse in the plug and ultimately check the relevant fuse in your fuse box.

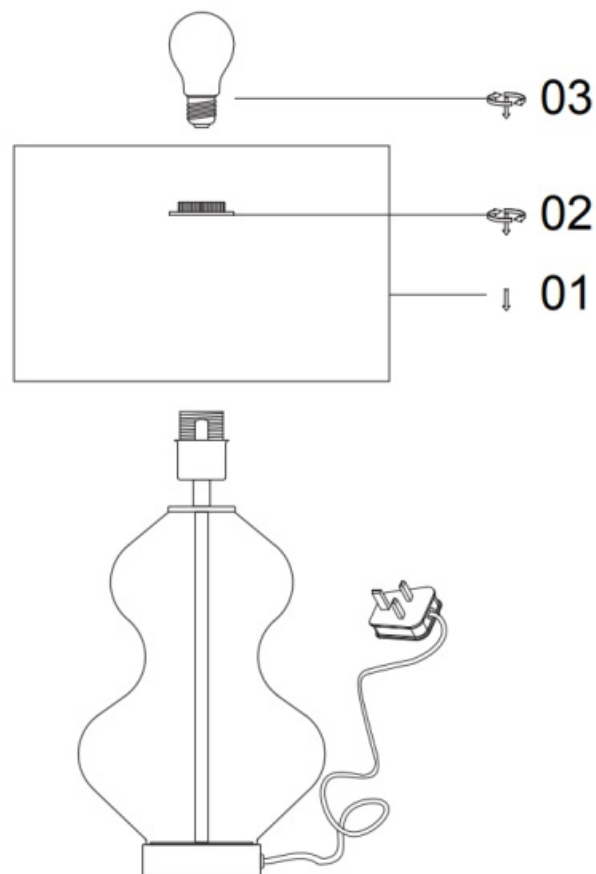
If you have any doubt about installation/use of this product, consult a qualified electrician.

To use this item in Europe, the 3 pin adaptor can be removed by loosening the central screw and removing the adaptor to reveal the 2 pin Europe plug.



www.lampgenius.co.uk

Assembly Instructions



Scan QR code for multi-language

<https://qrco.de/bbiq6g>



UK Manufacturer: BH17 7BY
EU Manufacturer: Brilliant AG,
Brillantstrasse 1, D-27442 Gnarrenburg

Documents / Resources

<p>Installation and Safety Instructions LI721762 Zephyr Touch Table Lamp Glass Globe White/Grey</p> <p>Important: Read these instructions carefully before using the lamp. These instructions contain important information about the safe use of the lamp. Please read these instructions carefully and keep them for future reference.</p> <p>Warnings: Do not touch the glass globe when the lamp is on. The glass globe can become very hot. Do not touch the lamp when it is plugged into the power outlet. Do not use the lamp in a wet or damp environment. Do not use the lamp near flammable materials. Do not use the lamp for purposes other than intended.</p> <p>Technical specifications: Voltage: 230V~50Hz. Power: 15W. Base: E27. Glass globe: 150mm x 150mm. Weight: 1.5kg. Dimensions: 400mm x 400mm x 450mm.</p> <p>CE mark: The CE mark indicates that the lamp complies with the requirements of the CE mark.</p>	<p>Lamp Genius LI721762 Zephyr Touch Table Lamp [pdf] Instruction Manual LI721762, 99110-100454-102676, LI721762 Zephyr Touch Table Lamp, LI721762, Zephyr Touch Table Lamp, Touch Table Lamp, Table Lamp</p>
--	--

References

-  [Lighting, Lights, And Light Fittings | Lamp Genius](#)
- [User Manual](#)

Manuals+, **Privacy Policy**

This website is an independent publication and is neither affiliated with nor endorsed by any of the trademark owners. The "Bluetooth®" word mark and logos are registered trademarks owned by Bluetooth SIG, Inc. The "Wi-Fi®" word mark and logos are registered trademarks owned by the Wi-Fi Alliance. Any use of these marks on this website does not imply any affiliation with or endorsement.