

««lamidesk

Super Speed  
Remote Control



# lamidesk Super Speed Remote Control User Manual

[Home](#) » [lamidesk](#) » lamidesk Super Speed Remote Control User Manual 

## Contents

- 1 lamidesk Super Speed Remote Control
- 2 Documents / Resources
  - 2.1 References

««lamidesk

## lamidesk Super Speed Remote Control





#### UP/DOWN ROLLER

Simply touch button and roller will travel up and down.



#### JOGGING

In Continuous mode, the chosen axis will jog for as long as you hold the button down. The jogging speed is set by a potentiometer on the receiver.



#### AUTOMATIC

Three buttons used for setting and moving to set positions. The speed is set by a potentiometer on the driver box.



**FAST JOGGING** Switch to fast jogging. Using red/yellow buttons will then move the roller at full speed.

**SLOW JOGGING** Switch to slow jogging. Using red/yellow buttons will then move the roller at reduced speed.

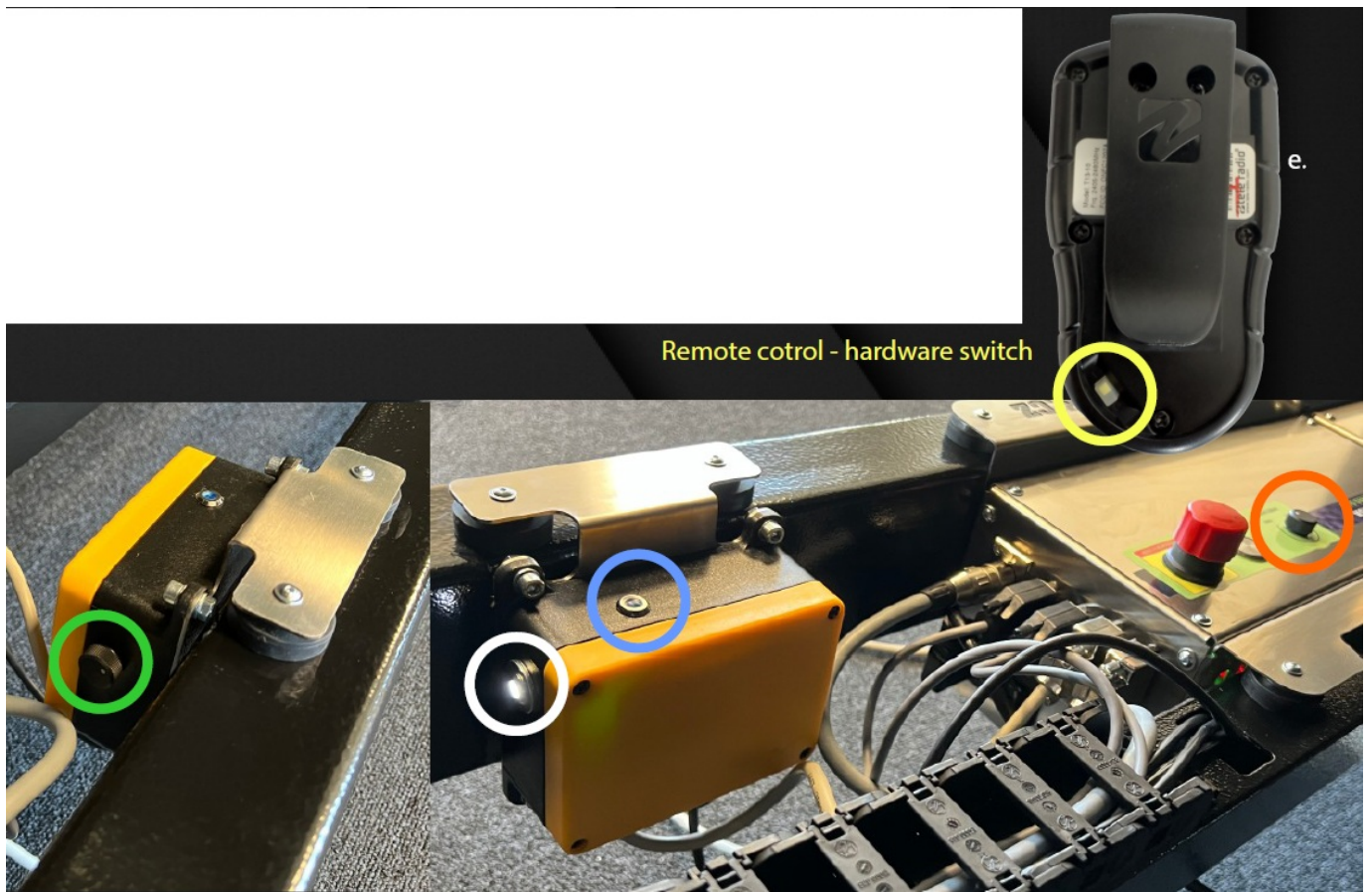


**ON** Sequences of short and long touches will activate the receiver.

Blue LED on the receiver will illuminate

**White LED** on the receiver will illuminate if receiver is powered.

**OFF** Switch off just remote controller not driver box.



**a** Receiver has a magnetic holder, just click it on the frame.

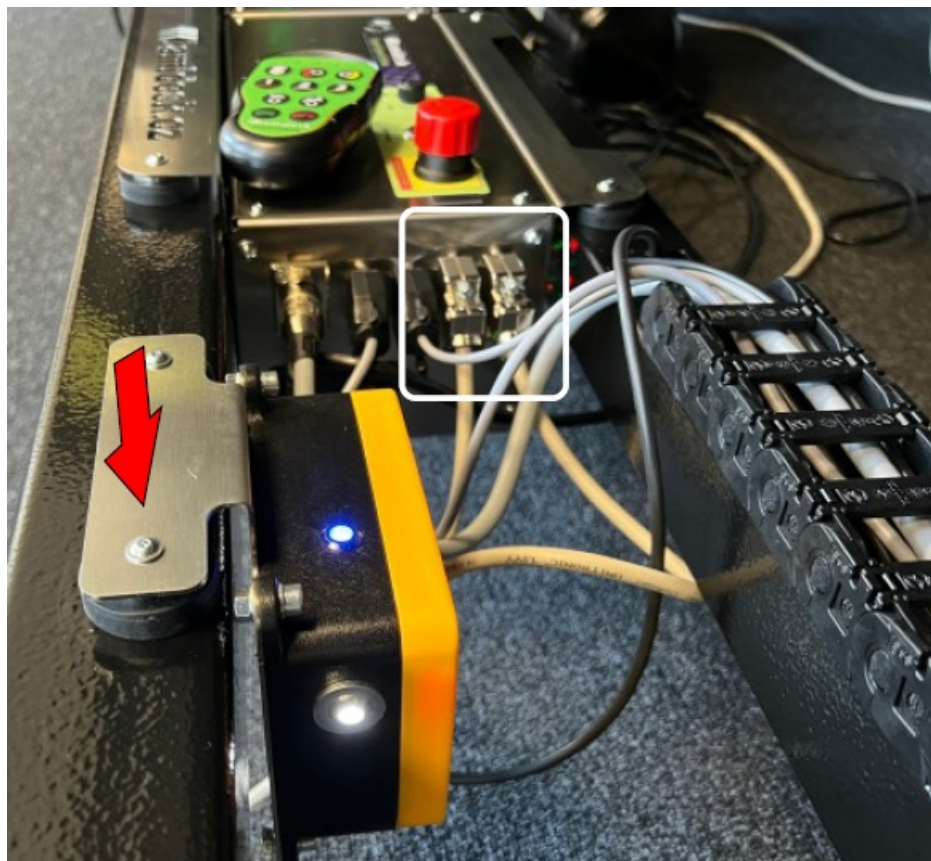
**b** Driver has to be remote ready, ask us for it there is solution how to upgrade your box. Driver has two identical connectors CANON 15.

Connect remote controller to any. The other is for foot pedal.

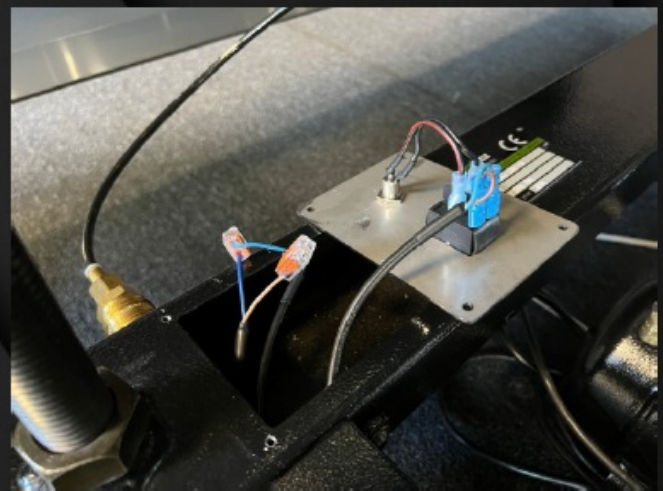
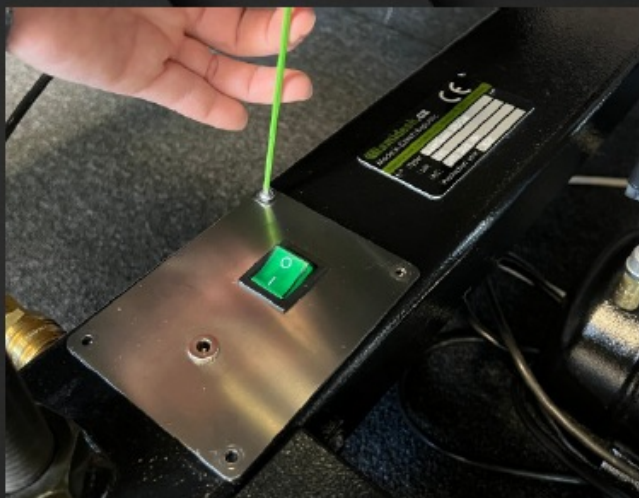
Remote control and foot pedal can be connected and work together.

**c** UP/DOWN function connection





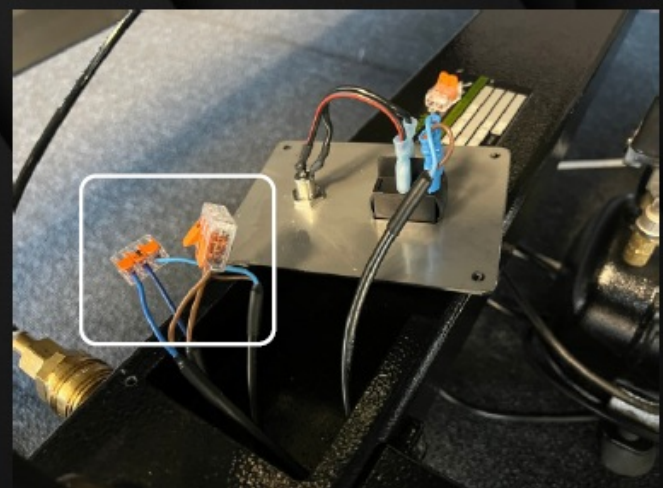
remove inlet cover



push wiring through tube



change 2-pole WAGO for 3-pole WAGO



## Documents / Resources



[lamidesk Super Speed Remote Control](#) [pdf] User Manual  
Super Speed Remote Control, Super Speed, Remote Control, Control

## References

- [User Manual](#)

### Manuals+ Privacy Policy

This website is an independent publication and is neither affiliated with nor endorsed by any of the trademark owners. The "Bluetooth®" word mark and logos are registered trademarks owned by Bluetooth SIG, Inc. The "Wi-Fi®" word mark and logos are registered trademarks owned by the Wi-Fi Alliance. Any use of these marks on this website does not imply any affiliation with or endorsement.