



---

# LAKE LITE Solar Skylight with Motion Sensor User Manual

September 22,  
2025



## Contents [ [hide](#) ]

### 1 Solar Skylight with Motion Sensor

#### 1.1 User Manual

##### 1.1.1 Parts Description

##### 1.1.2 Troubleshooting

##### 1.1.3 Product Activation

##### 1.1.4 Before Installation

###### 1.1.4.1 Working Mode Description

###### 1.1.4.2 Installation Direction of Solar Panel

###### 1.1.4.3 Installation Height and Distance

##### 1.1.5 Installation

###### 1.1.5.1 Bird Spike Installation

###### 1.1.5.2 All in One Installation

###### 1.1.5.3 Indicating Descriptions

##### 1.1.6 Infrared Remote Control

### 2 Documents / Resources

#### 2.1 References

# Solar Skylight with Motion Sensor

## User Manual

For questions please call us at [260-918-2758](tel:260-918-2758) or email us at [sales@lakelite.com](mailto:sales@lakelite.com)

Made in China



**Before using the LAKE LITE Solar Skylight, carefully read the following precautions to avoid damage or errors.**

## Operational Conditions & Limits

- This product is rated as IP66 protection grade.
- The operating temperature range is from -20°C to 45°C and the charging temperature

limit is within 0°C to 45°C.

- The heavy-duty structure will survive up to a Category 12 typhoon or cyclone. (Storms above Category 12 may cause damages to the product).

## **Transportation & Storage**

- This product contains lithium batteries. Please follow air transport regulations when shipping. It should be regarded as potentially flammable and explosive, and be isolated from other goods when stored, so as to avoid any damage.
- The solar panels of this product should be considered as fragile. There should never be more than 4 layers of boxes when stacked. To avoid damage to the panels, make sure no heavy pressure is applied to the boxes.
- Please store the product in temperature between 0°C to 45°C.
- If stored for a long period, the product should be recharged every 6 months. Please only use the special charger (purchased from manufacturer) to avoid damage to the battery or device. The charging method is: first fully charge the battery power, then discharge the battery power, and finally charge to 50% power.

## **Product Recycling**

- This product is made from recyclable, high-performance materials. All materials are compliant to the ROHS standard. Do not dispose of this product with other household waste.
- Please check your local regulations on collection and disposal of electronic items. Proper disposal of used product helps prevent negative impacts on the environment.

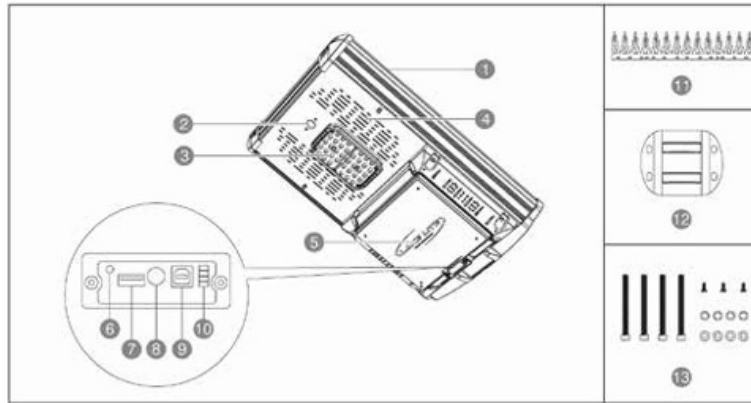
## **Product Maintenance**

- To ensure effective solar radiation absorbing, clean the surface of the solar panels regularly with water and a soft cloth. Don't use highly soluble chemicals or abrasives containing aminobenzene.
- This solar street light operates on a low DC voltage. Unless it's customized, do not connect any components or ports to any AC power supply or higher rated DC voltage system.
- The light sources contained in these luminaries shall only be replaced by the

manufacturer or his service agent or any equivalently qualified persons.

- Using any third party components to replace the original ones without authorization is forbidden. The product will lose warranty if the users disassemble the products without the manufacturer’s prior authorization.
- To order replacement parts or to have them fitted, please contact your local distributor.

**Parts Description**



No.	Parts	Functions
1	Solar panel	Absorbs and converts solar energy into electricity.
2	Motion sensor	Detects human movement.
3	LED light	Lights the area.
4	Vents	Heat dissipation.
5	Control box	Battery (charge / discharge) management.
6	Infrared remote control receiver	Infrared remote control.
7	Type A USB port / Parameter configuration interface	For battery charging via a 14VDC 1.5A power supply / Parameter Configuration Interface.

8	ON/OFF button	Turn on/off the light, or enter/exit the Transportation mode.
9	Type B USB port	For program input.
10	Function indicator lamps	To indicate the product's working status (See "Indicating Descriptions" on page 6 for more information.)
11	Bird spike	Prevents solar panel contamination from bird droppings.
12	Bracket	To fix the solar engine.
13	M8 hexagon headed screws 4pcs / M8 lock washers 4pcs / M8 flat washer 4pcs / self-tapping screw 3pcs	Fix the solar light and bird spike in place.

## Troubleshooting

No.	Symptoms	Troubleshooting Steps	Process
1	No light at night	Check that the lamp can be manually activated.	Refer to "Activation and Installation" section on this user guide and run activation tests.
		Check if the solar panel is blocked from the sunlight by houses, trees and other obstacles.	Clear obstructions or change installation location.

		<p>Check if there is any artificial light source(s) shining on the solar panel during the night.</p>	<p>Remove the artificial light source(s) of interference or change the installation location.</p>
		<p>Examine status of each component based on the repair guide.</p>	<p>Replace the damaged component(s).</p>
2	A serious shortage of working time at night	<p>Check if the solar panel is blocked from the sunlight by houses, trees and other obstacles.</p>	<p>Clear obstructions or change installation location.</p>
		<p>Check if the surface of the solar panel is dusty or covered.</p>	<p>Clean the surface of solar panels as detailed above.</p>
		<p>Examine if the battery pack is damaged as per the repair guide instructions.</p>	<p>Replace damaged battery.</p>
3	Lighting does not follow the normal operation mode of turning on and off		<p>Replace controller(s) and reprogram.</p>
		<p>Check if the air temperature close to human body temperature.</p>	<p>When the air temperature is close to human temperature, motion detection may slow down. It will return to normal after the air temperature changes.</p>

4	Abnormal motion sensor	Check if the installation height is too high.	It is out of motion detection range when installation height exceeds 8m. It is recommended to reduce the height or use other operating modes.
		Check if the motion sensor or controller(s) is damaged.	Replace damaged motion sensor or controller(s).

## Product Activation

\* **In the daytime:** When connecting the LED street light to the solar engine, the street light lights up for 20 seconds, and then turns off. It means the solar street light has been activated automatically.

\* **At night:** Press the ON/OFF button for 5 seconds, and then the LED street light switches on. it means the solar street light has been activated manually. Then, If you short press the button, the light will switch between ON and OFF.

### \*\*\* Remarks:

#### \* **ON mode:**

The system will work normally, charging in the daytime and discharging at night.

#### \* **Transport (idle) mode:**

The solar street light will power off in one hour and then stay in the OFF mode. for transportation, storage. or maintenance purpose, until it's re-activated.

#### \* **OFF mode:**

The system will not work, charge or discharge.

#### \* **Power ON:**

##### a. **In the daytime:**

The solar street lights gets activated and powered on automatically (i.e. to light up for 20s and then switch off), once it is taken out of the carton (for the all ii one type), or

when the LED street light is connected to the solar engine (for the split type).

**b. At night:**

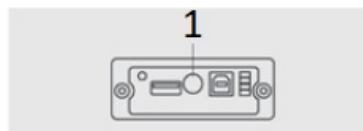
Long press the ON/OFF button for 5 seconds to get the solar street light activated manually (i.e. to switch on), with the solar engine connected to the led light.

**\* Power OFF:**

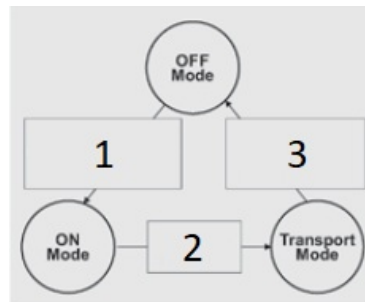
Press the ON/OFF button for 5 seconds when the light is On, to see the light flashes for 3s and then switches off to come into Transport Mode; Then press the button for 5s again, or have no operation for one hour, to have the light flash for 1 second and switch off to get the solar street light power off.

**\* Switch ON/OFF the light:**

When the solar street light is activated and powered on, short press the ON/OFF button, and then the light will switch between on and off.



1. ON/OFF button



1. Automatically on in the daytime, or long press 5 seconds.
2. Press 5 seconds or no operation for more than an hour
3. Long press 5 seconds

**Before Installation**

**Working Mode Description**

The product default setting controls the light through photo sensing of the solar panel. The light will turn on automatically when it's dark and turn off automatically when it's



bright. At night it will go into the dim mode when no one is around and turn to full brightness when motion is detected.



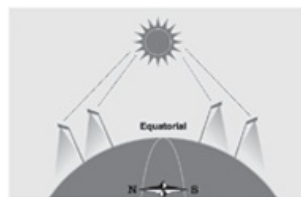
1. Dim mode (25% Brightness)
2. Full Brightness (100% Brightness)

**Installation Direction of Solar Panel**

**(a)** Please select the appropriate product according to the installation site’s sunlight intensity and required operating time. If you are in the northern hemisphere, face the solar panels towards the south as far as possible when installing the solar street light: if you are in the southern hemisphere, face the solar panels towards the north. **(see picture 1)**

**(b)** For maximum operation efficiency of the solar panels, make sure the sunlight is not blocked by buildings or trees. **(see picture 2)**

Picture 1



Picture 2



**Installation Height and Distance**

Before installing the solar street lights, please refer to the below recommended height and distance between two poles, based on the LED power of each product. Consult our product specialists for any special lighting requirements.

<b>Power</b>	<b>Bat Wing Light Source</b>	
	<b>Installation Height</b>	<b>Installation Distance</b>

15W	4~6m	15~25m
20W	4~6m	15~25m
30W	5~8m	20~30m
50W	7~10m	25~35m
80W	10~12m	30~40m

## Installation

### Bird Spike Installation

Use 3 self-tapping screws to fix the bird spike along the rim of the top of the light.  
(See Figure 1)

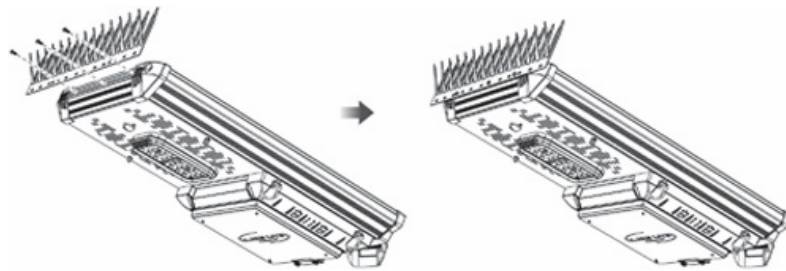


Figure 1

### All in One Installation

**(1) Install bracket.** Use M8 spring washers, flat washers and M8 screws to connect them, leave enough space to ensure the bracket can fit onto the pole.

**(2) Fit solar light onto pole** and make sure it is securely fastened with M8 screws. (See Figure 2). **The maximum torque for those M8 bolts is 14Nm.** Do not surpass this torque specification.

**⚠ The product will be damaged if the top of the pole diameter is less than 75mm.**

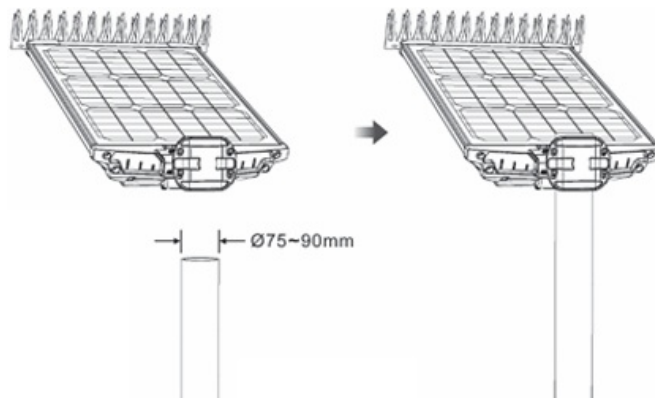


Figure 2

**Indicating Descriptions**

No.	Indicator Lamps' Working Status	Product Function Descriptions
1	Blue lamp slowly flashing, red lamp instantly flashing.	Battery cannot get discharged.
2	Blue lamp constantly on, red lamp instantly flashing.	Battery cannot get discharged.
3	Blue lamp instantly flashing, red lamp off.	Battery over-discharged.
4	Blue lamp constantly on, red lamp quickly flashing.	DCOUT short-circuited.
5	Blue lamp slowly flashing, red lamp quickly flashing.	LED lamp short-circuited.
6	Blue lamp constantly on, red lamp constantly on.	LED lamp has no power supply.
7	Blue lamp instantly flashing. red lamp constantly on.	No voltage increase to the led lamp.
8	Blue lamp quickly flashing, red lamp constantly on.	LED lamp open-circuited.

9	Blue lamp slowly flashing, red lamp constantly on.	Abnormal Voltage of LED lamp.
10	Blue lamp constantly on, red lamp off.	Normal discharging
11	Blue lamp off, red lamp off, green lamps off.	No indication
12	Both green lamps 1 and 2 slowly flashing.	Battery recharging
13	Both green lamps 1 and 2 constantly on.	Battery fully recharged.
14	Both green lamps 1 and 2 quickly flashing.	Charging exceeds protection current.
15	Both green lamps 1 and 2 quickly flashing, red lamp quickly flashing.	Charging exceeds inhibit current (short circuit)

### **Remarks:**

#### **1. Annotations:**

Slowly flashing: The indicator lamp turns on. and then turns off in 640ms, then turns on again in another 640ms, than turns off again in another 640ms, .....

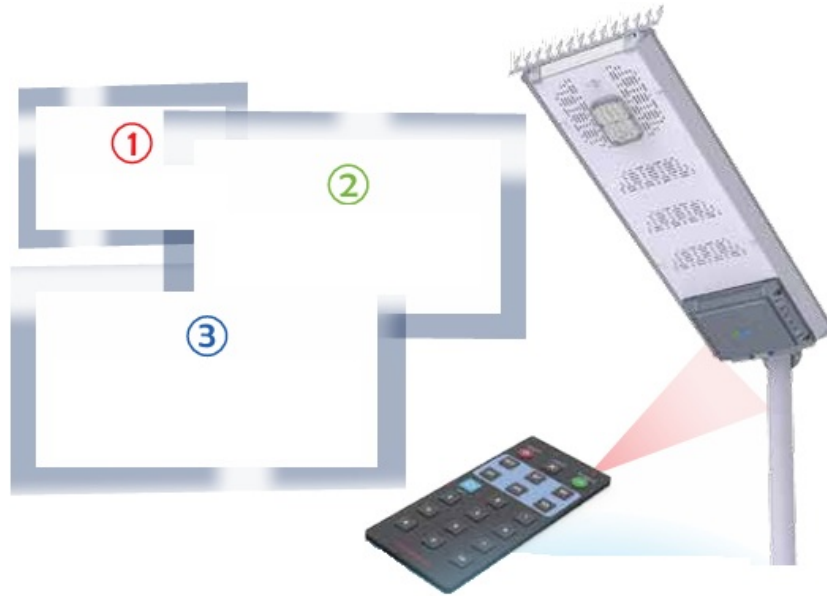
Instantly flashing: The indicator lamp turns on, and then turns off in 80ms, then turns on again in another 1.2s. then turns off again in another 80ms, then turns on again in another 1.2s, .....

Quickly flashing: The indicator lamp turns on. and then turns off in 80ms, then turns on again in another 80ms, then turns off again in another 80ms, .....

**2. In case you have any difficulty to determine the indicator lamps' working status, please just take a short video of the indicator lamps' working and send it to our**

factory for further analysis.

## Infrared Remote Control



(1) To switch ON/OFF the light;

(2) To shift from activated status to transportation mode to OFF mode;

(3) To change setting of the luminaire's working mode when specially needed; with maximum five working mode sections



1. The solar street light could be controlled manually when you hold the remote control

device and press its buttons under the lamp post within the range of 1~8 meters away from the post.




### Lake Lite

100 Industrial Drive

Avilla, IN 46710

## Documents / Resources

	<p><a href="#">LAKE LITE Solar Skylight with Motion Sensor [pdf]</a> User Manual</p> <p>Solar Skylight with Motion Sensor, Skylight with Motion Sensor, Motion Sensor, Sensor, Skylight</p>
---	---

## References

- [User Manual](#)

LAKE LITE

---

## Leave a comment

Your email address will not be published. Required fields are marked \*

Comment \*

Name

Email

Website

Save my name, email, and website in this browser for the next time I comment.

**Post Comment**

**Search:**

e.g. whirlpool wrf535swhz

**Search**

[Manuals+](#) | [Upload](#) | [Deep Search](#) | [Privacy Policy](#) | [@manuals.plus](#) | [YouTube](#)

This website is an independent publication and is neither affiliated with nor endorsed by any of the trademark owners. The "Bluetooth®" word mark and logos are registered trademarks owned by Bluetooth SIG, Inc. The "Wi-Fi®" word mark and logos are registered trademarks owned by the Wi-Fi Alliance. Any use of these marks on this website does not imply any affiliation with or endorsement.