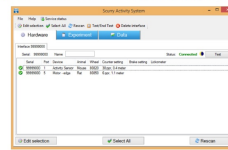


Lafayette Instrument 86165 Scurry Activity Monitoring Software



Lafayette Instrument 86165 Scurry Activity Monitoring Software User Guide

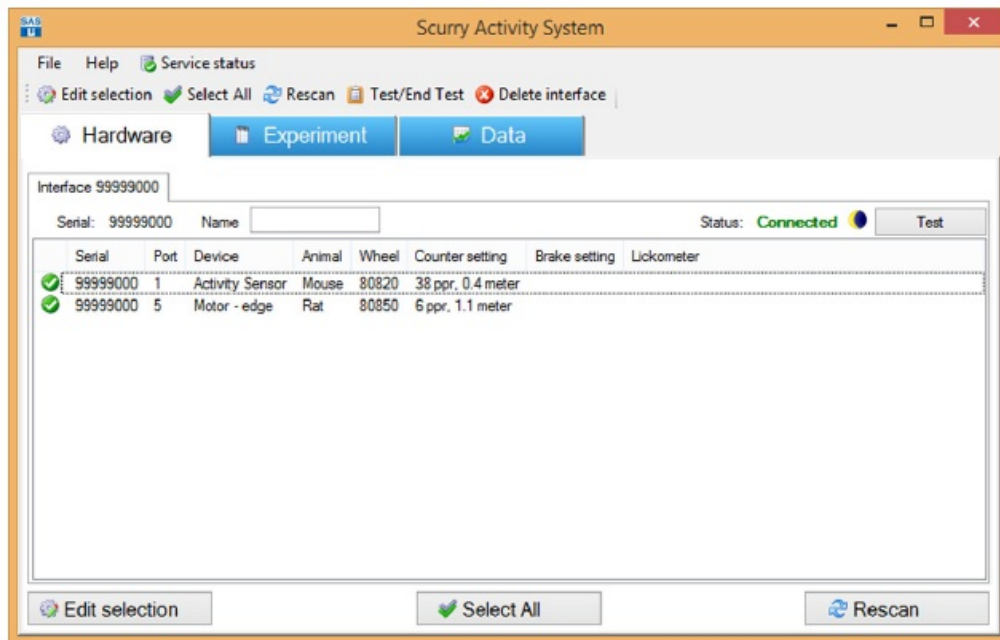
[Home](#) » [Lafayette Instrument](#) » Lafayette Instrument 86165 Scurry Activity Monitoring Software User Guide 

Contents

- [1 Lafayette Instrument 86165 Scurry Activity Monitoring Software](#)
- [2 Scurry Activity Monitoring Software](#)
- [3 Minimum Computer Specifications](#)
- [4 Installation Instructions](#)
- [5 Terms and Conditions](#)
- [6 Limited Warranty](#)
- [7 Documents / Resources](#)
 - [7.1 References](#)
- [8 Related Posts](#)



Lafayette Instrument 86165 Scurry Activity Monitoring Software



Scurry Activity Monitoring Software

Download Full User Manual

Full User manual is available upon installation of software

Minimum Computer Specifications

- OS: Windows 10/11
- Processor: 1GHz (multi-core recommended)
- RAM: 1GB (4GB recommended)
- Disk space: 60GB (1TB recommended)
- Hardware: 1x (or more) USB 2.0 or higher ports*

While USB connection support is somewhat unlimited, a practical limitation of 8 interfaces (supports 128 wheels, counters, or some combination of both) being connected to a single PC with software is recommended.

Installation Instructions

1. To open the install wizard, double-click the Setup icon.
2. If prompted whether or not to allow the program to make changes to the computer, click "Yes" to continue.
3. At the welcome screen, close any other open programs (if applicable), and then click "Next" to continue.
4. Review the license agreement in the next window and accept by clicking the appropriate option. Click the "Next" button to continue.
5. Select the desired install location for Scurry. Leave the default in the field, or designate a custom location by clicking "Browse" and navigating to the appropriate location. When the selection has been made, click "Next" to continue.
6. Choose whether or not to create a start menu folder by checking or unchecking the associated check box. Checking this option will allow users to access Scurry from the start menu. When the selection has been made, click "Next" to continue.
7. Similarly, choose whether or not to create a desktop icon by checking or unchecking the associated check box.

Checking this option will allow users to access Scurry from the desktop. Once the selection has been made, click

“Next” to continue.

8. Review the installation details. If any errors are present, use the “Back” button to return and correct them before continuing. If there are no errors, click “Install” to begin the installation.
9. Once the install has been completed, click “Finish” to exit the wizard.

Terms and Conditions

Worldwide Headquarters

Lafayette Instrument Company 3700 Sagamore Parkway North Lafayette, IN 47904, USA

Tel: [765-423-1505](tel:765-423-1505)

Fax: [765-423-4111](tel:765-423-4111)

sales@lafayetteinstrument.com

European Office

Tel: +44 1509 817700

Fax: +44 1509 817701

eusales@lafayetteinstrument.com

Placing an Order

All orders need to be accompanied by a copy of your purchase order. All orders must include the following information:

- Quantity
- Part Number
- Description
- Purchase order number or method of pre-payment
- Tax status (include tax-exempt numbers)
- Shipping address for this order
- Billing address for the invoice we'll mail when this order is shipped
- Telephone number
- Email address
- Signature and typed name of person authorized to order these products

Exchanges and Refunds

No item may be returned without prior authorization from Lafayette Instrument Company and a Return Materials Authorization (RMA#) number which must be affixed to the shipping label of the returned goods. The merchandise should be packed well and insured for the full value. Unopened merchandise may be returned prepaid within thirty (30) days after receipt of the item and in the original shipping carton. Collect shipments will not be accepted. Product must be returned in saleable condition, and credit is subject to inspection of the merchandise.

Repairs

Instrumentation may not be returned without first receiving a Return Materials Authorization Number (RMA). When returning instrumentation for service, please contact Lafayette Instrument to receive an RMA number. Your RMA number will be good for 30 days. Address the shipment to:

Lafayette Instrument Company

RMA# XXXX

3700 Sagamore Parkway North
Lafayette, IN 47904, USA.

Shipments cannot be received at the PO Box. All items should be packed well and insured for full value. An estimate of repair will be given prior to completion. We must receive a copy of your purchase order via email before non-warranty repair work can commence.

Damaged Goods

Damaged instrumentation should not be returned to Lafayette Instrument before a thorough inspection. If a shipment arrives damaged, note the damage on the delivery bill and have the driver sign it to acknowledge the damage. Contact the delivery service, and they will file an insurance claim. If damage is not detected at the time of delivery, contact the carrier/shipper and request an inspection within 10 days of the original delivery. Please contact the Lafayette Instrument Customer Service Department for repair or replacement of the damaged merchandise.

Limited Warranty

Lafayette Instrument Company warrants the equipment to be free of defects in material and workmanship for one year from the date of shipment, except as provided hereinafter. This assumes normal usage under commonly accepted operating parameters and excludes consumable products.

The warranty period for repairs or used instrumentation purchased from Lafayette Instrument is 90 days. Lafayette Instrument Company agrees either to repair or replace, at its sole option and free of part charges to the customer, instrumentation which, under proper and normal conditions of use, proves to be defective within the warranty period. Warranty for any parts of such repaired or replaced instrumentation shall be covered under the same limited warranty and shall have a warranty period of 90 days from the date of shipment or the remainder of the original warranty period whichever is greater. This warranty and remedy are given expressly and instead of all other warranties, expressed or implied, of merchantability or fitness for a particular purpose and constitute the only warranty made by Lafayette Instrument Company.

Lafayette Instrument Company neither assumes nor authorizes any person to assume for it any other liability in connection with the sale, installation, service or use of its instrumentation. Lafayette Instrument Company shall have no liability whatsoever for special, consequential, or punitive damages of any kind from any cause arising out of the sale, installation, service or use of its instrumentation.

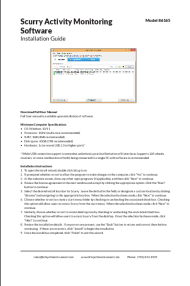
All products manufactured by Lafayette Instrument Company are tested and inspected before shipment. Upon prompt notification by the Customer, Lafayette Instrument Company will correct any defect in warranted equipment of its manufacture either, at its option, by return of the item to the factory, or shipment of a repaired or replacement part. Lafayette Instrument Company will not be obliged, however, to replace or repair any piece of equipment, which has been abused, improperly installed, altered, damaged, or repaired by others. Defects in equipment do not include decomposition, wear, or damage by chemical action or corrosion, or damage incurred during shipment.

Limited Obligations Covered by this Warranty

- Shipping charges under warranty are covered only in one direction. The customer is responsible for shipping charges to the factory if the return of the part is required.
- This warranty does not cover damage to components due to improper installation by the customer.
- Consumable and or expendable items, including but not limited to electrodes, lights, batteries, fuses, O-rings, gaskets, and tubing, are excluded from the warranty.
- Failure by the customer to perform normal and reasonable maintenance on instruments will void warranty claims.
- If the original invoice for the instrument is issued to a company that is not the company of the end user, and not an authorized Lafayette Instrument Company distributor, then all warranty requests must be processed through the company that sold the product to the end user, and not directly to Lafayette Instrument Company.

sales@lafayetteinstrument.com
www.lafayetteinstrument.com
Phone: [765-423-1505](tel:765-423-1505)

Documents / Resources



[Lafayette Instrument 86165 Scurry Activity Monitoring Software](#) [pdf] User Guide
86165, 86165 Scurry Activity Monitoring Software, Scurry Activity Monitoring Software, Activity Monitoring Software, Monitoring Software, Software

References

- [User Manual](#)

[Manuals+](#), [Privacy Policy](#)

This website is an independent publication and is neither affiliated with nor endorsed by any of the trademark owners. The "Bluetooth®" word mark and logos are registered trademarks owned by Bluetooth SIG, Inc. The "Wi-Fi®" word mark and logos are registered trademarks owned by the Wi-Fi Alliance. Any use of these marks on this website does not imply any affiliation with or endorsement.