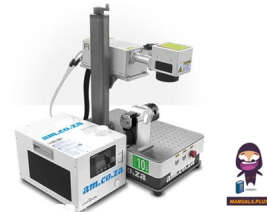


LabelMark

LabelMark
USBLMCV2
Marking
Machine



LabelMark USBLMCV2 Marking Machine Instructions

[Home](#) » [LabelMark](#) » LabelMark USBLMCV2 Marking Machine Instructions 

Contents

- [1 LabelMark USBLMCV2 Marking Machine](#)
- [2 Product Information](#)
- [3 Product Usage Instructions](#)
- [4 Marking machine driver installation](#)
- [5 Installing Driver Software](#)
- [6 Congratulations on your successful installation](#)
- [7 Documents / Resources](#)
 - [7.1 References](#)
- [8 Related Posts](#)

LabelMark

LabelMark USBLMCV2 Marking Machine



Product Information

Specifications:

- Product Name: Marking Machine Driver
- Compatible Systems: Windows XP, Windows 7, Windows 8, Windows 10
- Driver Version: Ezcad2.12.2
- Bit Type: 32-bit and 64-bit

Product Usage Instructions

1. Step 1: Copy Files to Hard Disk

Copy the Ezcad2.12.2 driver files from the provided U disk to the hard disk.

2. Step 2: Extract Compressed Package

Extract the compressed package files of Ezcad2.12.2 to a specific location on the hard disk.

3. Step 3: Check Windows System

Determine if your computer's Windows operating system is 32-bit or 64-bit.

4. Step 4: Install Driver

Open 'This PC', right-click and select 'Manage'. Install the driver for the marking machine.

5. Step 5: Select Driver

Select the appropriate driver (USBLMCV2) for the marking machine. Update driver software if necessary.

6. Step 6: Browse for Driver Software

Browse your computer for the installed driver software.

7. Step 7: Choose Driver Folder

Choose the correct driver folder based on your Windows system type (32-bit or 64-bit).

8. Step 8: Open Ezcad Software

Open the Ezcad software and agree to the terms to complete the installation.

FAQ

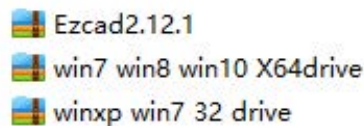
- **Q: What should I do if I cannot find the dongle?**

A: If you cannot find the dongle, ensure that the driver is installed correctly, the marking machine is powered on, and the USB cable is connected between the computer and marking machine.

Marking machine driver installation

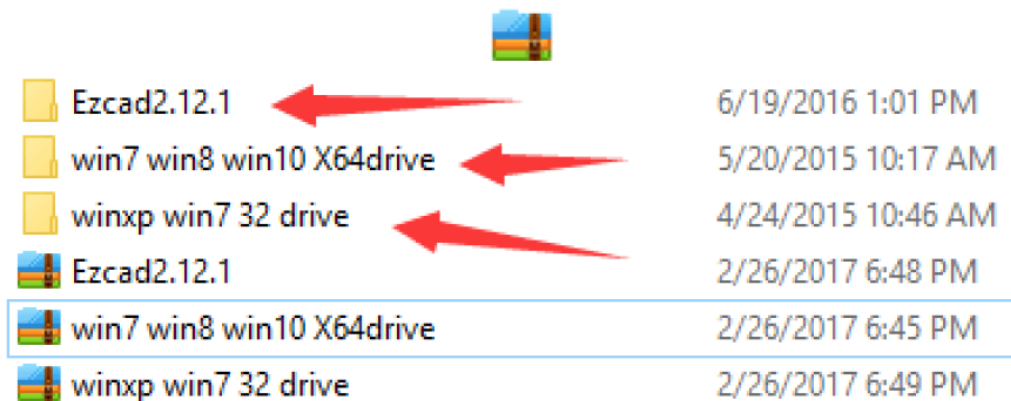
First step

Will U disk of the following file (Ezcad.2.12.2 \ win7 win8 win10 winb win7 32drive) copy to the hard disk.



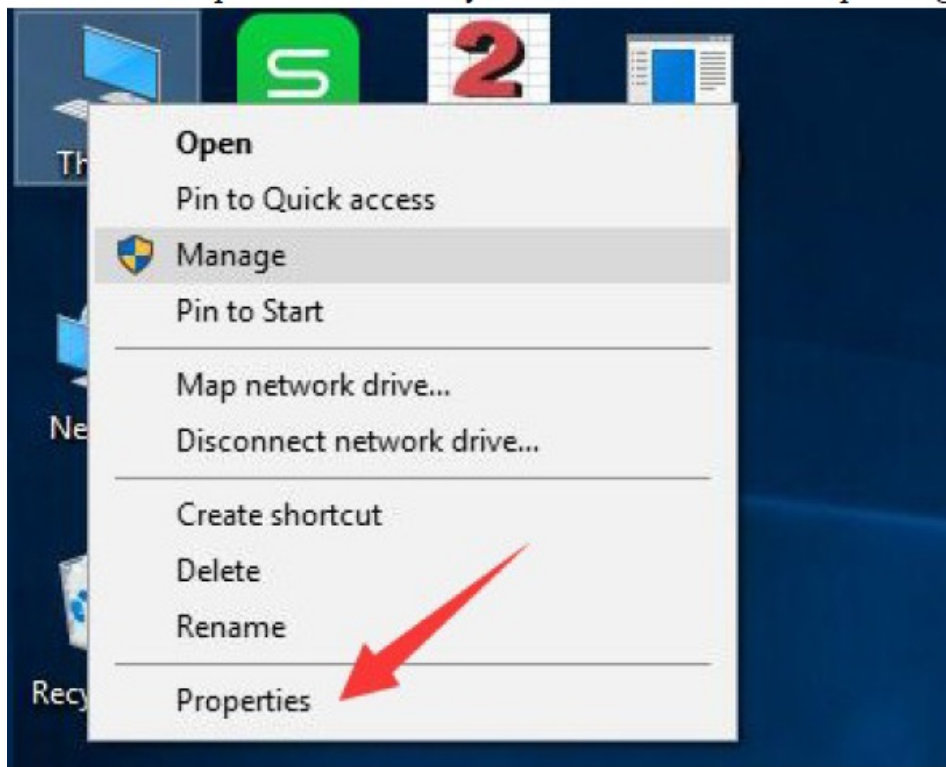
The second step

Will be (Ezcad.2.12.2 win7 win8 win10 X64drive \ winxp win7 32drive) 3 compressed package file extract.



Third step

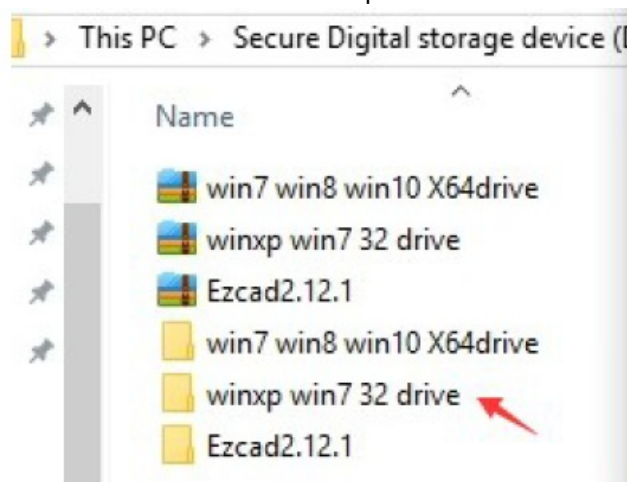
Check the computer's Windows system for 32-bit or 64-bit operating system



This computer is windows10 32-bit operating system

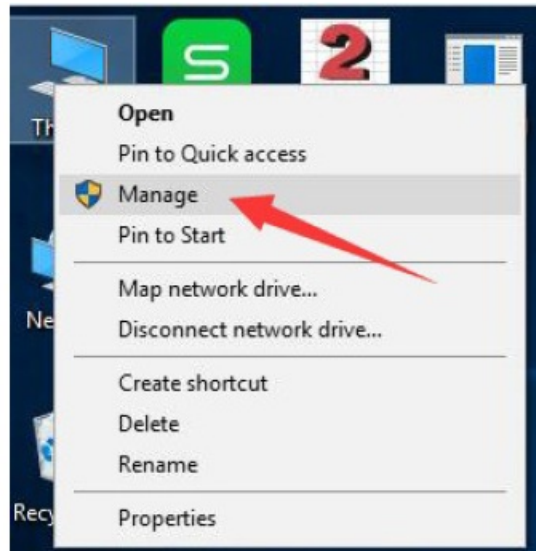


Corresponding to the driver for the hard drive inside the winxp win7 32 drive



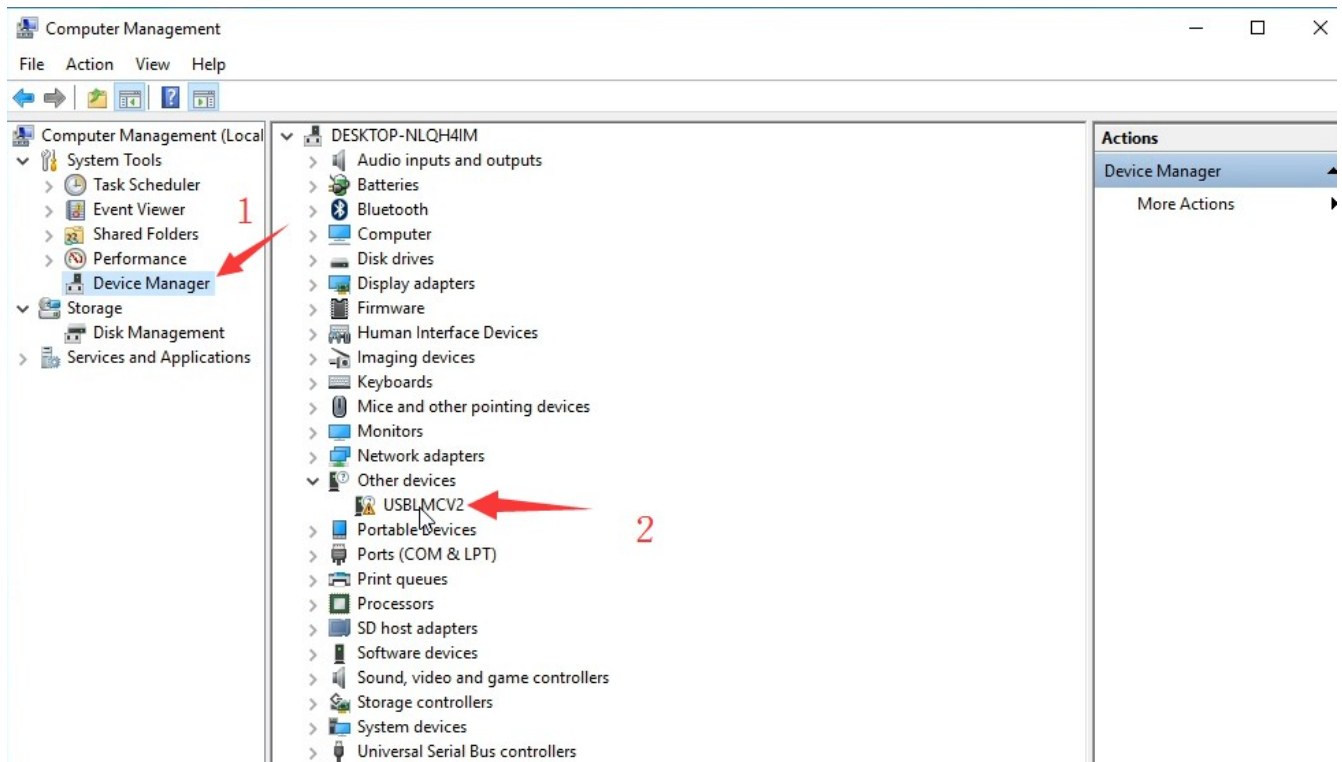
The fourth step

Install the driver, click This pc right, open Manage

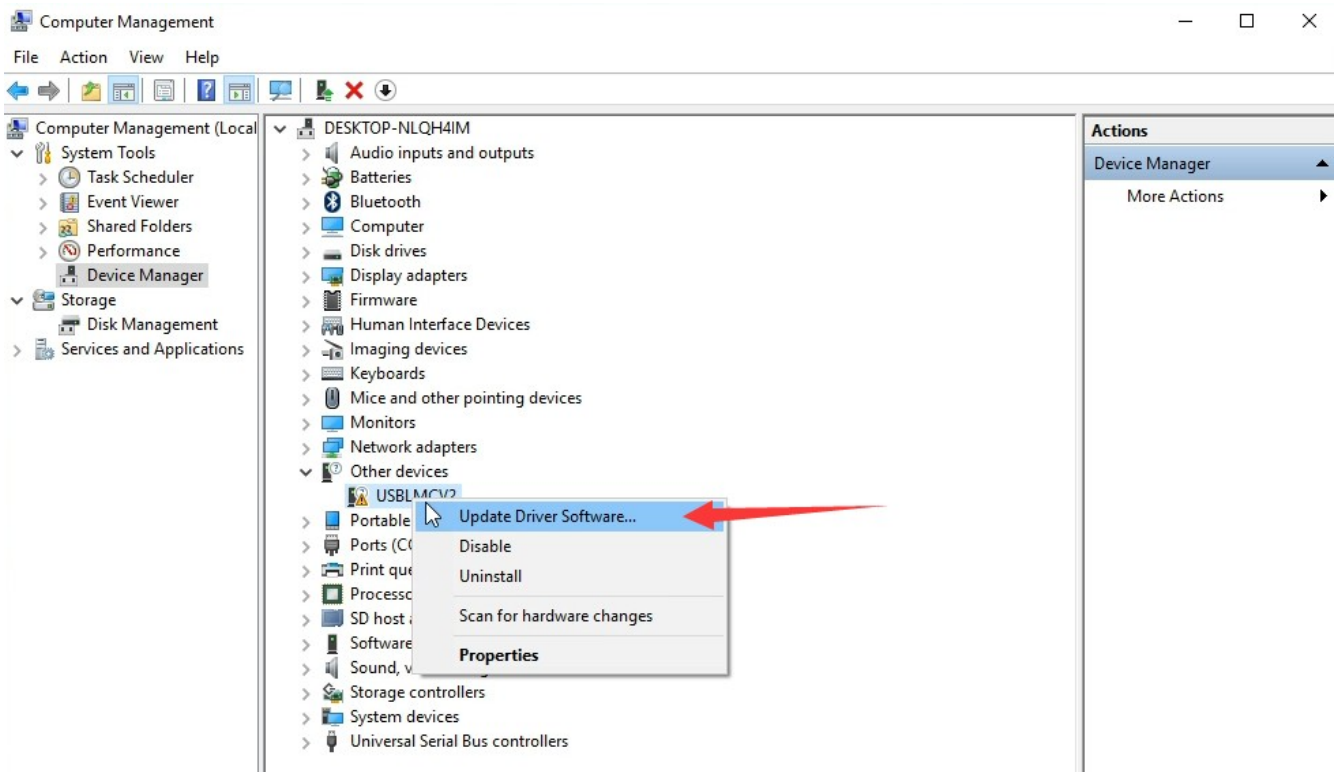


The fifth step

- Select the driver USBLMCV2 not loaded
- If USBLMCV2 is not displayed, connect the computer to the marking cable with the USB cable and turn on the key switch and button

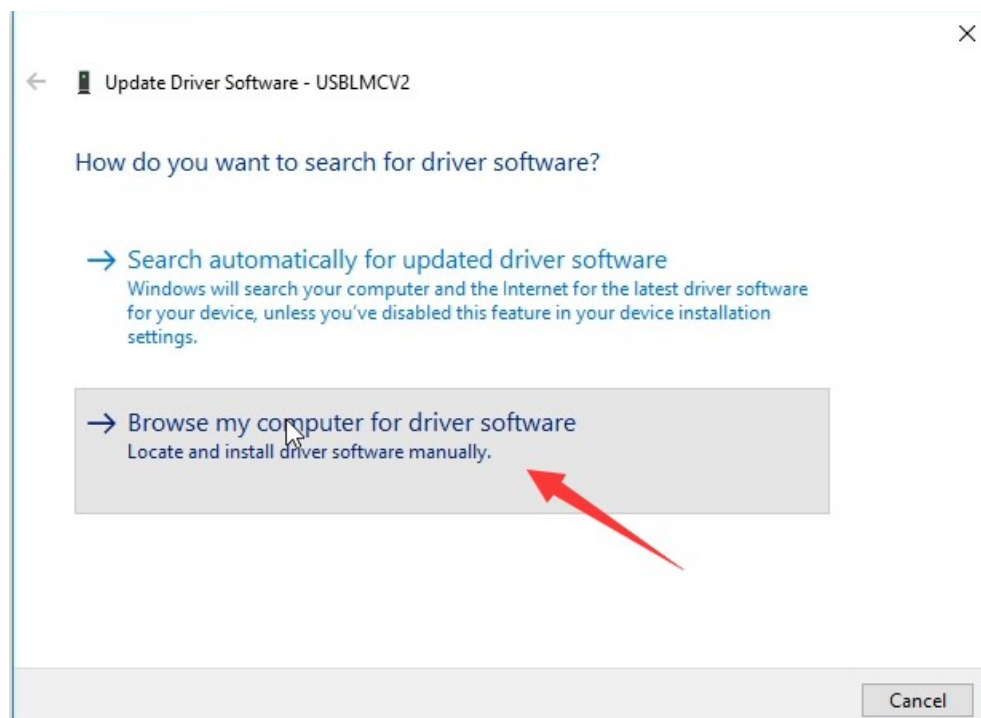


- Right click to select Update Driver Software

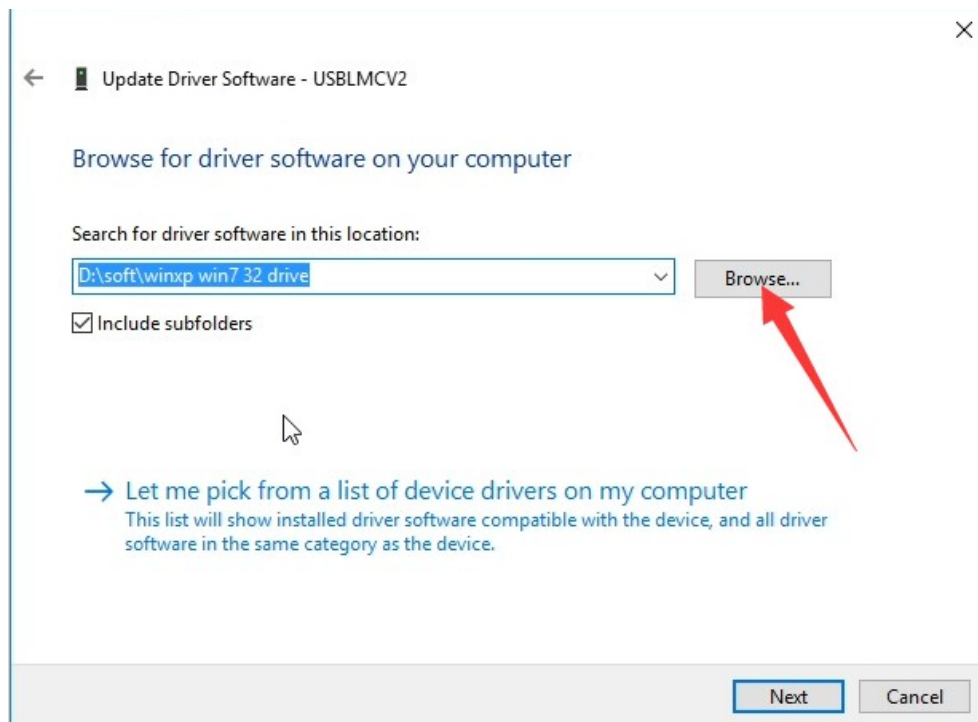


- **Step 6**

Browse my computer for driver software



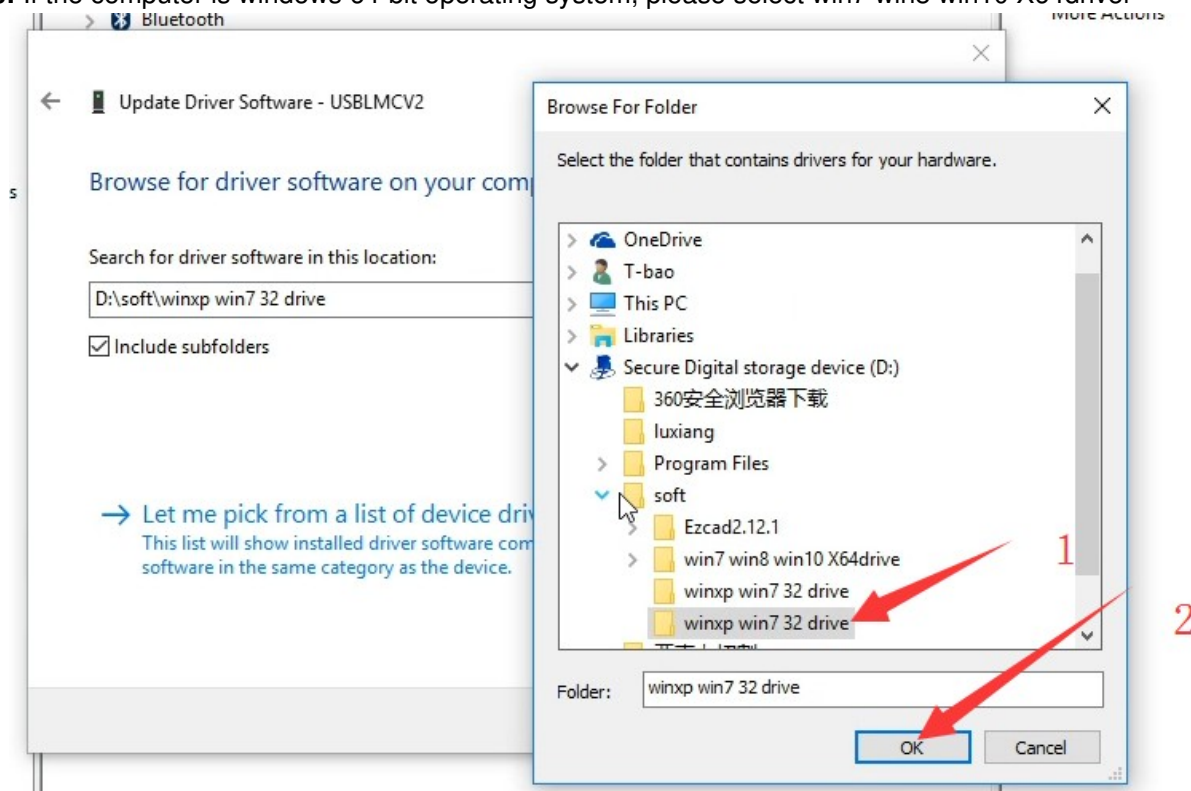
Browse



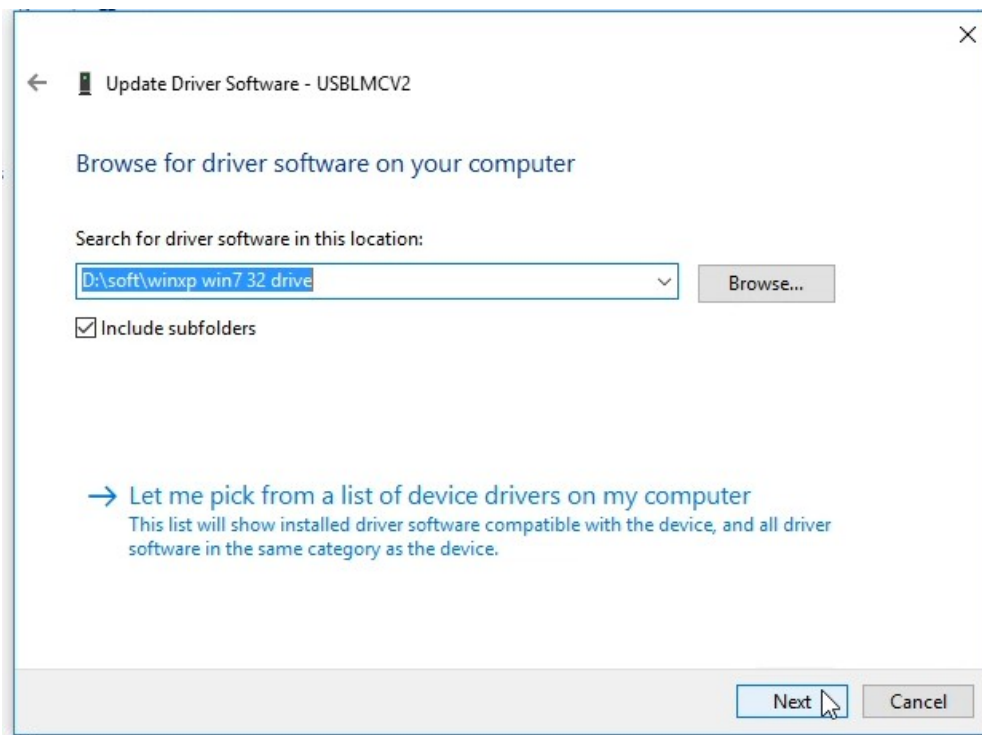
Step 7

- Choose to copy to the hard drive winxp win 32 driver folder

Tips: If the computer is windows 64-bit operating system, please select win7 win8 win10 X64driver



Next

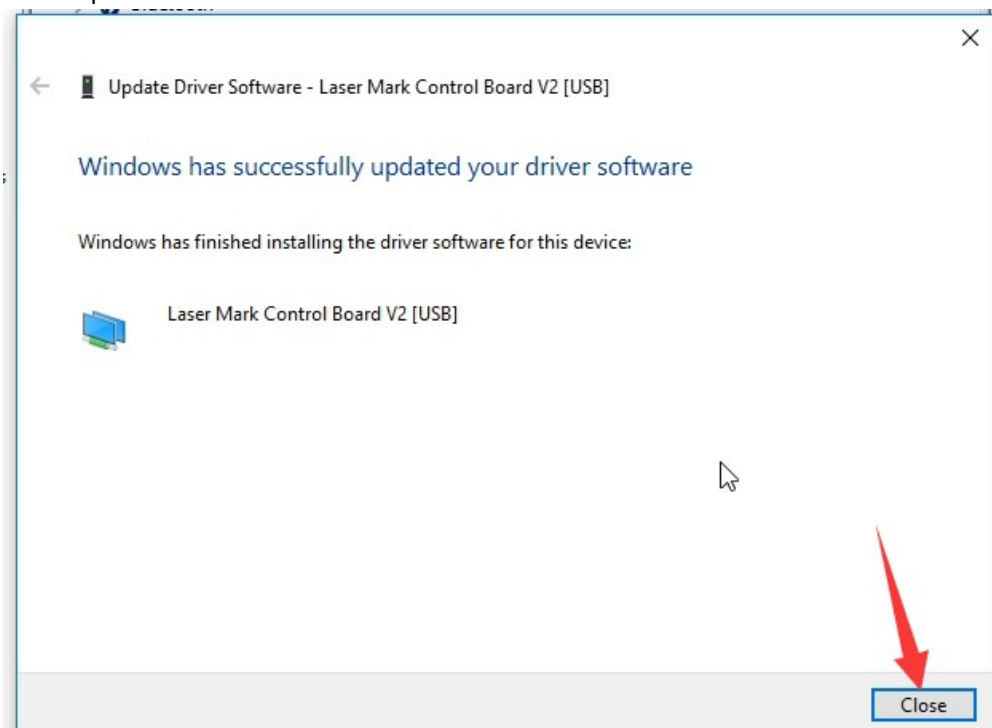


Installing Driver Software

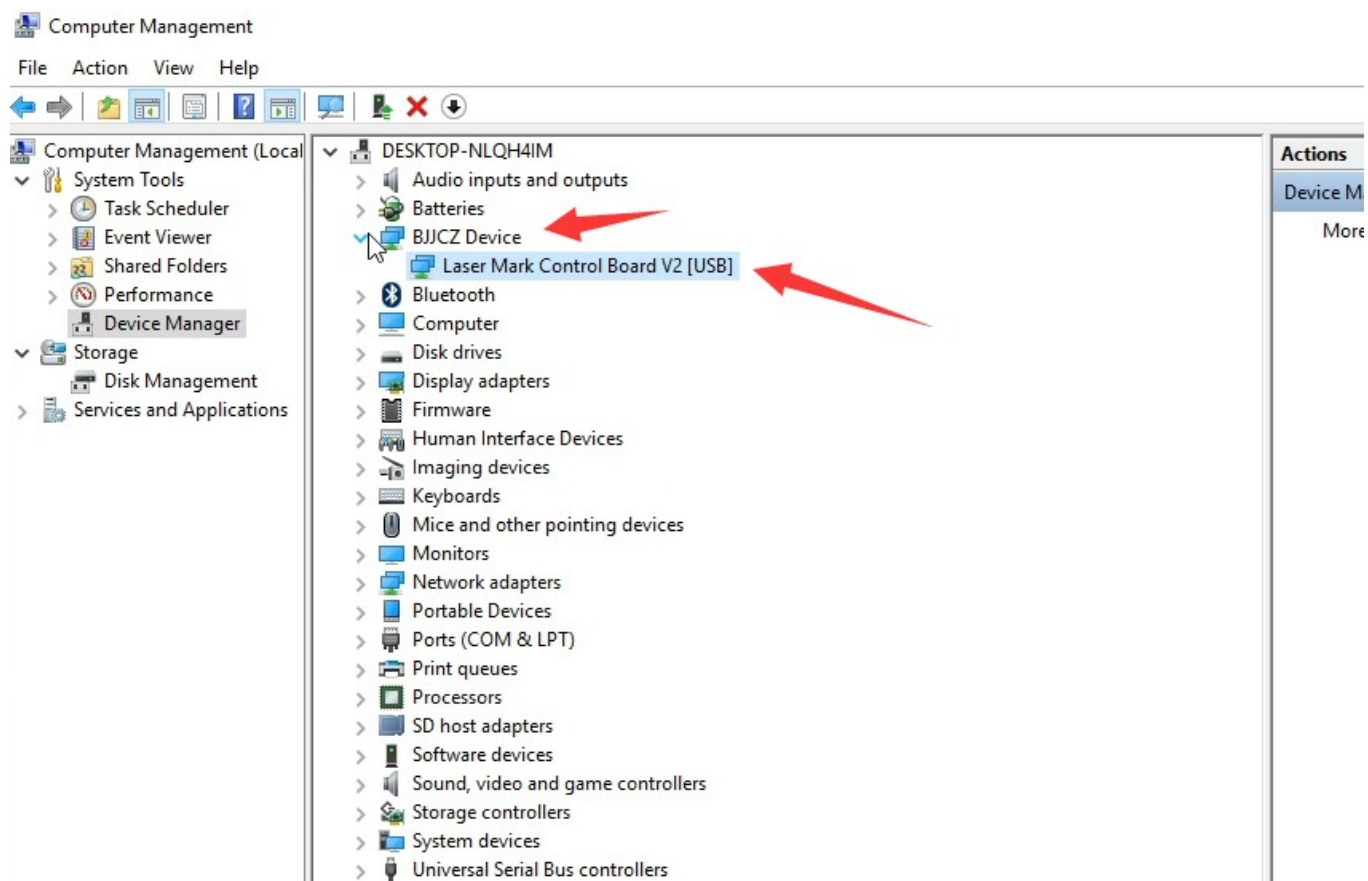


Close

The installation is complete and click Close

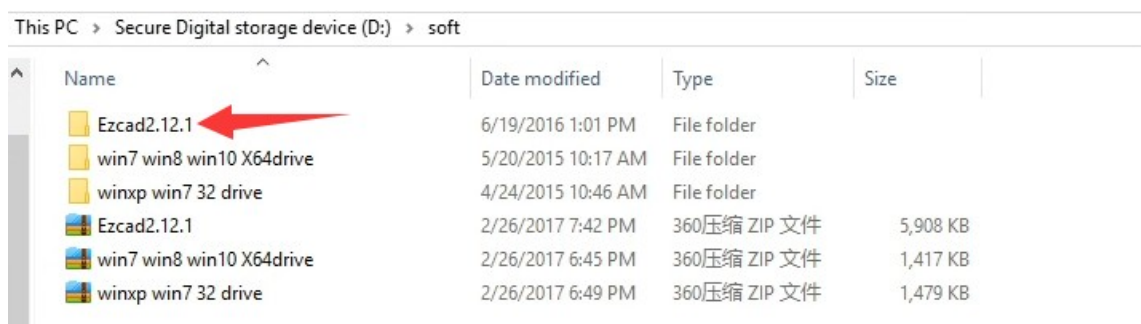


The Device Manager displays the driver name BJCZ Device, indicating that the installation driver was successful



Step 8

Open the hard disk of Ezcad2.12.1



Open Ezcad2

This PC > Secure Digital storage device (D:) > soft > Ezcad2.12.1 >

Name	Date modified	Type	Size
FONT	6/19/2016 1:01 PM	File folder	
LANG	6/19/2016 1:01 PM	File folder	
PARAM	6/19/2016 1:01 PM	File folder	
plug	6/19/2016 1:01 PM	File folder	
res	6/19/2016 1:01 PM	File folder	
AUTOSAVE.EZD	7/31/2016 4:55 PM	EZD File	1,547 KB
CoeFile.cfg	6/16/2016 7:45 PM	CFG File	67 KB
Com	12/21/2011 11:49 ...	Configuration sett...	1 KB
CorFile	3/2/2012 11:59 AM	Application	176 KB
CorFileEnu	3/2/2012 11:57 AM	Application	176 KB
DataMgr.dll	1/29/2013 5:52 PM	Application extens...	1,316 KB
EZCAD.CFG	2/26/2017 7:42 PM	CFG File	13 KB
EzCad2	6/5/2016 4:02 PM	Application	7,140 KB
Lmc1.dll	6/16/2016 8:44 PM	Application extens...	528 KB
LMCMIO.dll	2/27/2015 2:44 PM	Application extens...	36 KB
mathlib.dll	10/13/2014 1:56 PM	Application extens...	188 KB
MVAPI.dll	1/12/2006 4:40 PM	Application extens...	72 KB
MVBayerDec.dll	1/4/2010 6:00 PM	Application extens...	140 KB
MVCAP1.dll	1/16/2014 10:46 AM	Application extens...	360 KB
MVParm.dll	11/18/2005 3:42 PM	Application extens...	48 KB
NcPath.dll	1/9/2013 3:40 PM	Application extens...	104 KB

Select I agree

License

×

EzCad 最终用户软件许可协议

请认真阅读：本用户许可协议是您（个人或机构团体）与北京金橙子科技有限公司之间有关金橙子软件产品的“金橙子软件产品”包括计算机软件、相关媒体及任何印刷材料，并可能包括“联机”文档或电子文件（以下简称“软件产品”或“软件”）。您一旦安装、复制或以其它方式使用“软件产品”，即表示您同意接受本协议各项条款。

软件产品许可协议

本“软件产品”受著作权法及国际条约条款和其它知识产权法及条约的保护。本“软件产品”只提供使用许可。1. 许可协议的授予。本协议授予您下列权利：

您可以在单一计算机上安装使用本“软件产品”的一份副本。

2. 其它权利和限制说明。

- 不得对本软件进行反向工程、反编译或反汇编。
- 本软件是被当成一个单一产品而被授予许可协议，不得将各个部分分开在多台计算机上使用。
- 不得出租或租赁本软件。
- 软件的转让。您可以永久转让您在本协议下的所有权利，条件是不得保留副本，并将本“软件产品”全

组成部分、媒体和印刷材料、任何更新版本以及本协议），且受让人须接受本协议的各项条款。如本“软件产品”的副本；(b)在一台单一计算机上安装本“软件产品”，但条件是只为您为备份或存档目的保留软件原件。产品随附的印刷材料。

4. 拒绝保证。本“软件”将“按现状”交付给您，对于其用法或性能，北京金橙子科技有限公司不做保证。北京金橙子科技有限公司也不保证使用本软件所获的性能和结果。除非依据您所在区域的适用法律不得排除或限制前述任何

条款，北京金橙子科技有限公司不做出保证条件、陈述或条款（明示的或暗示的无论是依据条例、一般法律、其它任何原因）包括但不限于不侵犯第三方权益、上销性、完整性、满意的质量或适用于任何特殊用途。

5. 责任有限：无论遵循本协议与否，就使用本软件而产生的：利润损失、可用性消失、商业中断，或任何形

外或必然的破坏，或任何第三方的索赔，北京金橙子科技有限公司及其代理、销售人员概不负责；即使北京金

事先被告知此类情况有可能发生，也无济于事。

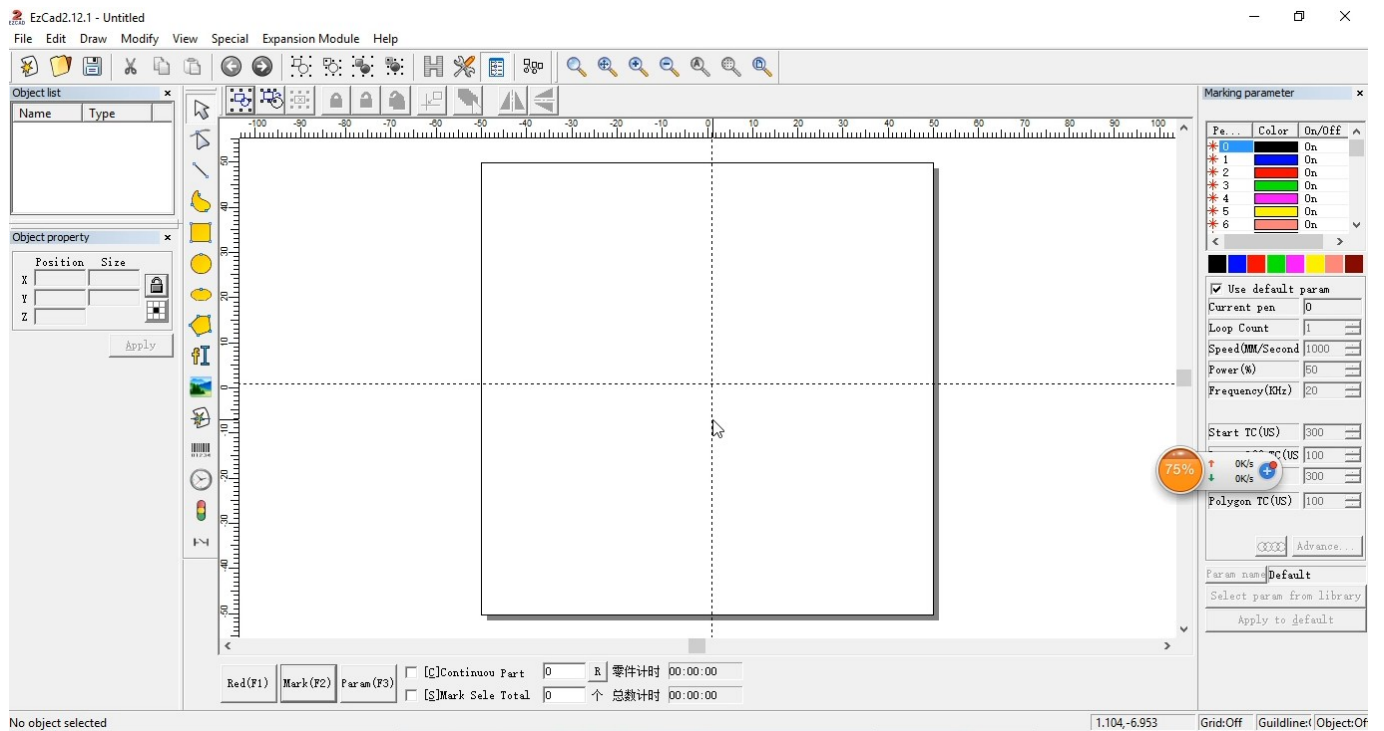
6. 许可终止：若您违反本协议的任一条款，此许可协议将自动终止。对于此类许可的自动中止北京金橙子科

知您。终止许可之时，您必须立即销毁本软件及文档的所有拷贝。

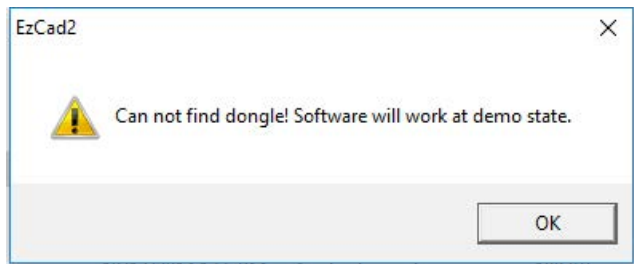
I Agree

I Don't Agree

Congratulations on your successful installation



If you can not find dongle! Software will work at demo state. Note that you have not installed the driver or the marking machine is not open, or the computer and the marking machine with USB cable is not connected.



Documents / Resources

	<p>LabelMark USBLMCV2 Marking Machine [pdf] Instructions</p> <p>Ezcad2.12.2, USBLMCV2, BJJCZ Device, USBLMCV2 Marking Machine, USBLMCV2, Marking Machine, Machine</p>
--	---

References

- [User Manual](#)

[Manuals+.](#) [Privacy Policy](#)

This website is an independent publication and is neither affiliated with nor endorsed by any of the trademark owners. The "Bluetooth®" word mark and logos are registered trademarks owned by Bluetooth SIG, Inc. The "Wi-Fi®" word mark and logos are registered trademarks owned by the Wi-Fi Alliance. Any use of these marks on this website does not imply any affiliation with or endorsement.