



# labelife P780BT Portable Label Maker User Guide

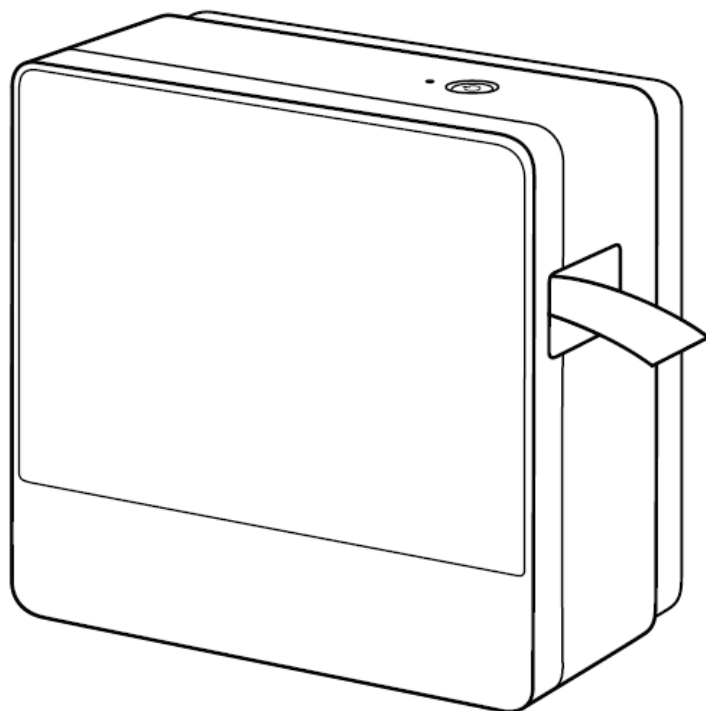
[Home](#) » [Labelife](#) » labelife P780BT Portable Label Maker User Guide 

## Contents

- [1 labelife P780BT Portable Label Maker](#)
- [2 Specification](#)
- [3 FCC Warning Statement](#)
- [4 IC Warning Statement](#)
- [5 Documents / Resources](#)
  - [5.1 References](#)

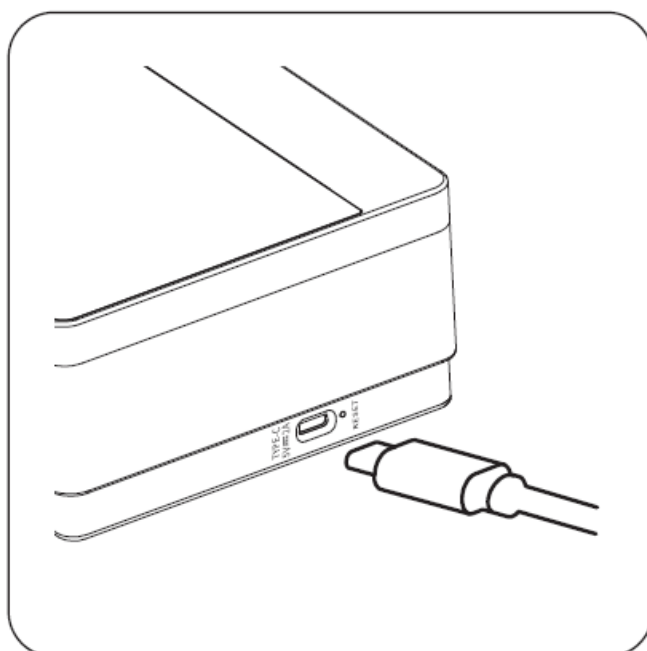
# Labelife

**labelife P780BT Portable Label Maker**

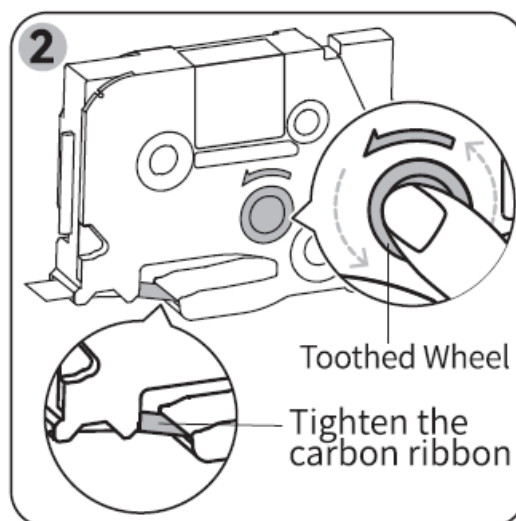
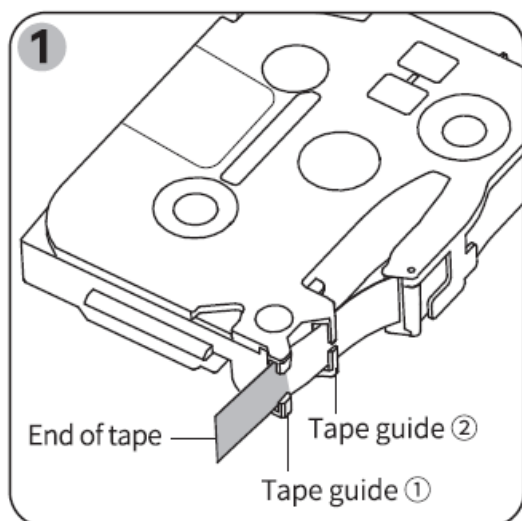


Charging until the power indicator doesn't flash (fully charged).

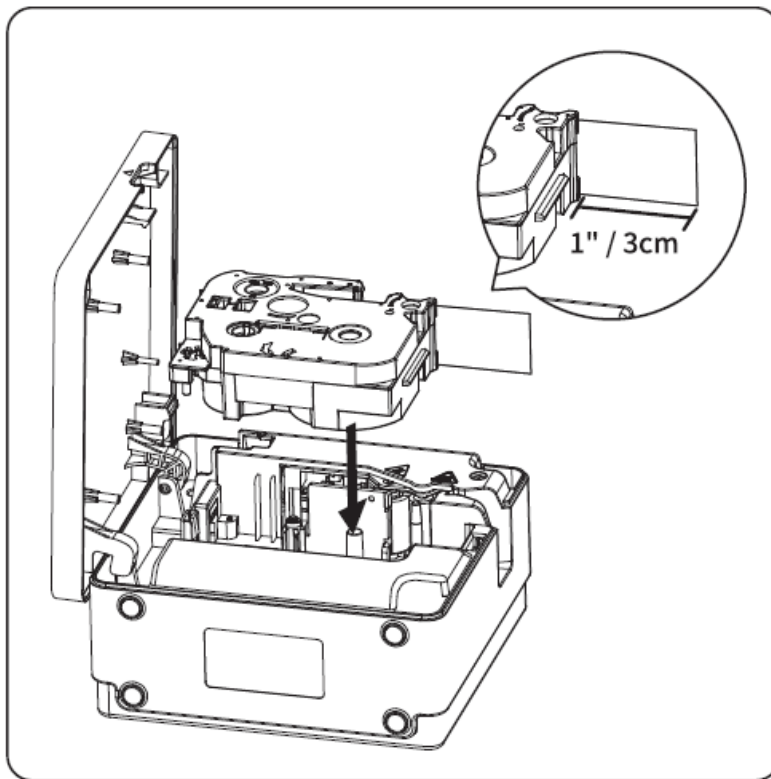
1



1. Pull the tape out through the tape guides about 1" (3cm).
2. Rotate the toothed wheel until it's tightened.



Install the tape and pull out a section of the label about 1" (3cm) from the paper outlet.



**Print from Your Computer**



**Download “Labelife” Label Editor.**

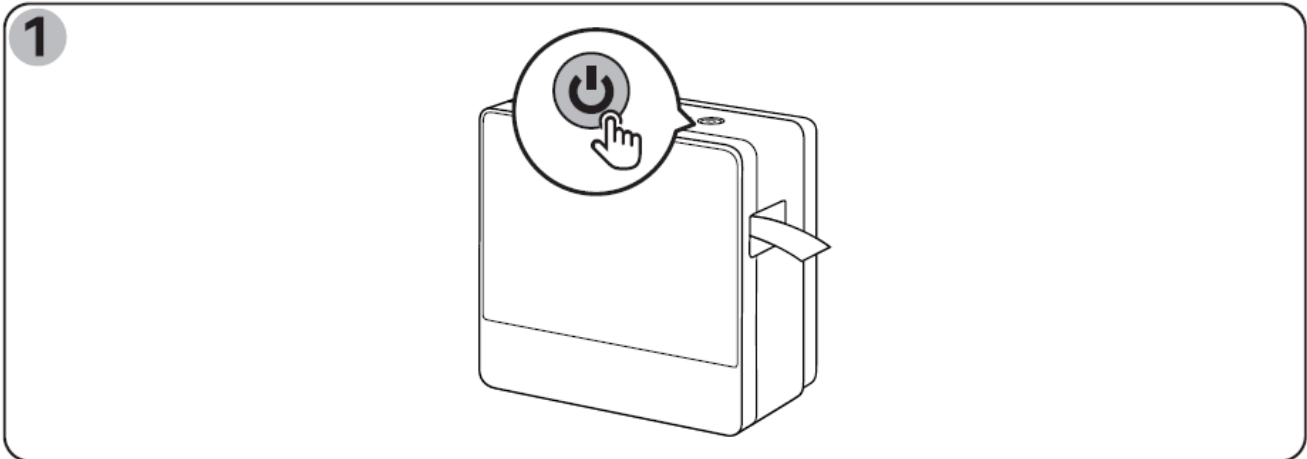
**Note:** the spelling of the [labelife] . There is ONLY ONE “L” in the middle. Labelife is FREE software!

**Print from Your Mobile Device**

# Print from Your Mobile Device

Drucken auf einem mobilen Gerät

# 5



Turn on the printer.



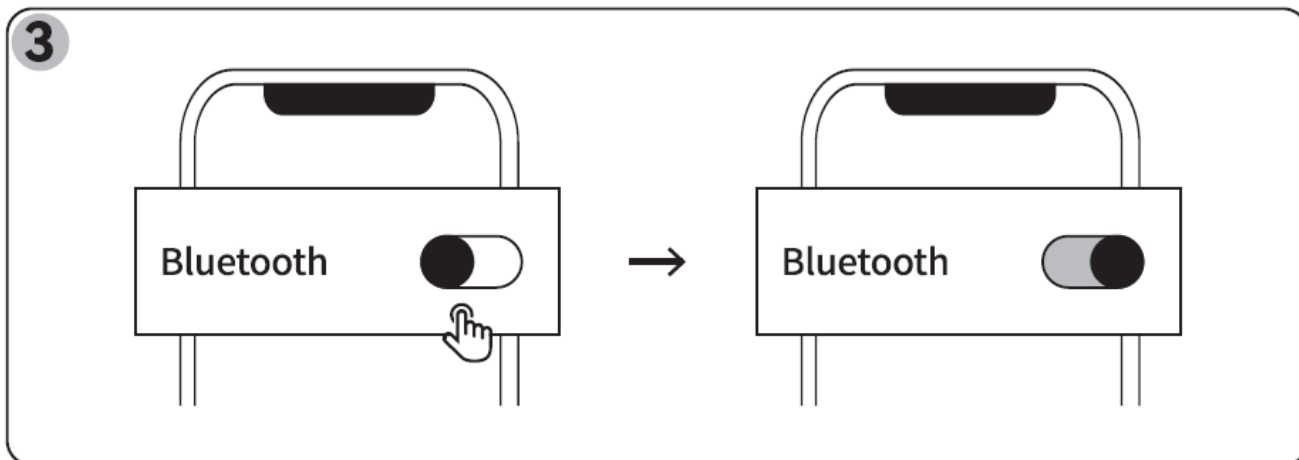
## Print from Your Mobile Device

3. Turn on Bluetooth from phone settings.

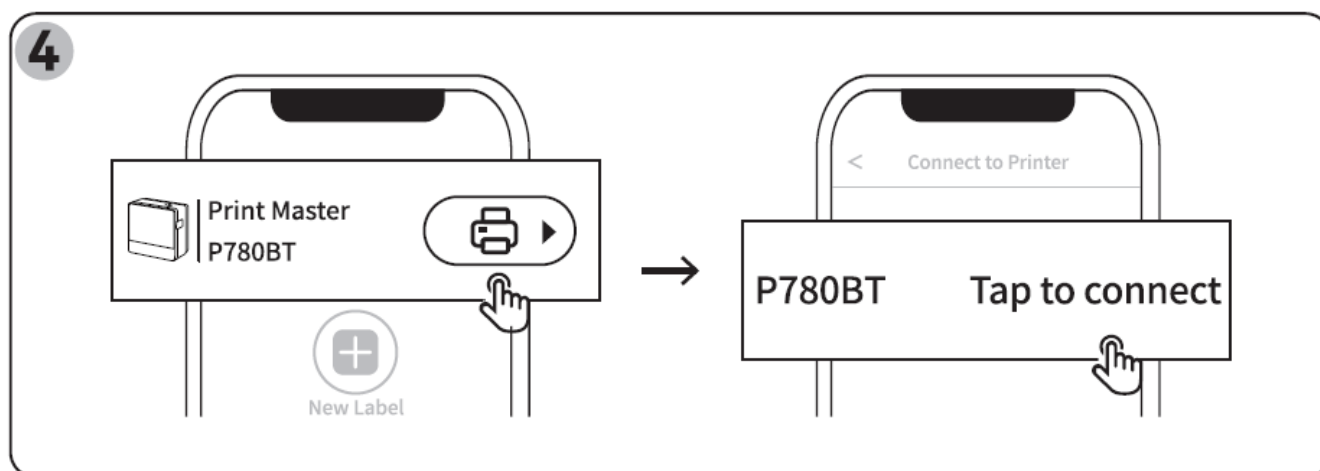
# Print from Your Mobile Device

Drucken auf einem mobilen Gerät

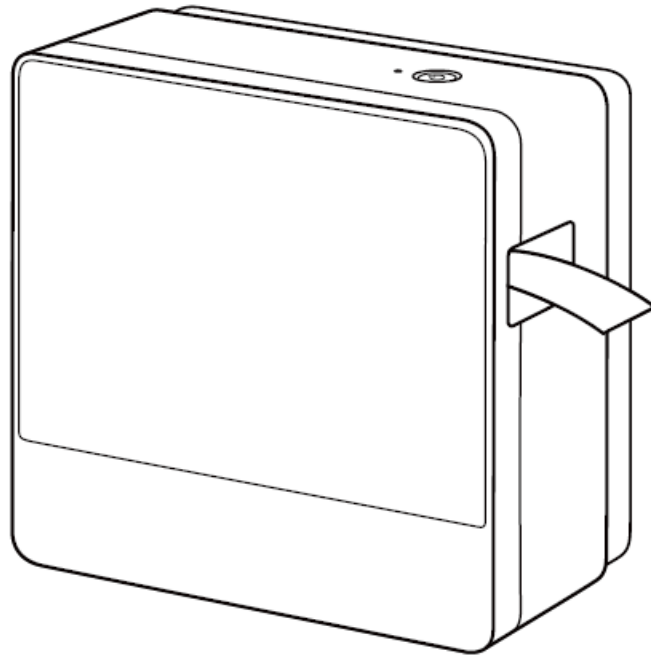
6



4. Connect the printer via Bluetooth in the Print Master App. (Enable GPS if you are using an Android device)



## Specification



- **Model** P780BT
- **Tape Width** Available widths: 6mm. 9mm. 12mm. 18mm. 24mm
- **Max Print Width** 9mm
- **Print Technology** Thermal transfer
- **Print Resolution** 180 \*180dpi
- **Power Supply** Lithium battery 1200mAh
- **Item Size** 135(w)x130(d)x67(h)mm
- **Supported Operating Methods** Mobile Device/Computer

## FCC Warning Statement

This device complies with part 15 of the FCC Rules. Operation is subject to the following two conditions:

- (1) This device may not cause harmful interference, and
- (2) this device must accept any interference received, including interference that may cause undesired operation.

Any Changes or modifications not expressly approved by the party responsible for compliance could void the user's authority to operate the equipment. This equipment has been tested and found to comply with the limits for Class B digital devices, which provide reasonable protection against harmful interference in a residential installation. This equipment generates uses and can radiate radio frequency energy and, if not installed and used in accordance with the instructions, may cause harmful interference to radio communications.

However, there is no guarantee that interference will not occur in a particular installation. If this equipment does cause harmful interference to radio or television reception, which can be determined by turning the equipment off and on, the user is encouraged to try to correct the interference by one or more of the following measures:

- Reorient or relocate the receiving antenna.
- Increase the separation between the equipment and receiver.
- Connect the equipment into an outlet on a circuit different from that to which the receiver is connected.
- Consult the dealer or an experienced radio/TV technician for help.

### FCC RF exposure statement

The device has been evaluated to meet general RF exposure requirement. The device can be used in portable exposure conditions without restriction.

### IC Warning Statement


This device contains licence-exempt transmitter(s)/receiver(s) that comply with Innovation, Science and Economic Development Canada's licence-exempt RSS(s). Operation is subject to the following two conditions:

1. This device may not cause interference.
2. This device must accept any interference, including interference that may cause undesired operation of the device.

### IC RF exposure statement

The device has been evaluated to meet general IC RF exposure requirement. The device can be used in portable exposure condition without restriction.

### Documents / Resources

	<a href="#">labelife P780BT Portable Label Maker</a> [pdf] User Guide 2ASRB-P780BT, 2ASRBP780BT, P780BT, P780BT Portable Label Maker, Label, Label Maker, P780BT Label Maker, Portable Label Maker
---	---

### References

- [User Manual](#)

[Manuals+](#), [Privacy Policy](#)

This website is an independent publication and is neither affiliated with nor endorsed by any of the trademark owners. The "Bluetooth®" word mark and logos are registered trademarks owned by Bluetooth SIG, Inc. The "Wi-Fi®" word mark and logos are registered trademarks owned by the Wi-Fi Alliance. Any use of these marks on this website does not imply any affiliation with or endorsement.