

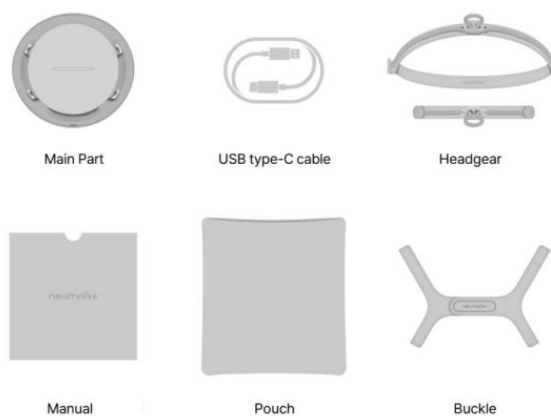


## User Manual

### Contents [ [hide](#) ]

- [1 Components](#)
- [2 Starting PACER](#)
- [3 Maintaining PACER](#)
- [4 Others](#)
- [5 Documents / Resources](#)
  - [5.1 References](#)

## Components



The images shown in the user manual may differ from the actual product appearance.

The main body of the mask comes with silicone pre-attached.

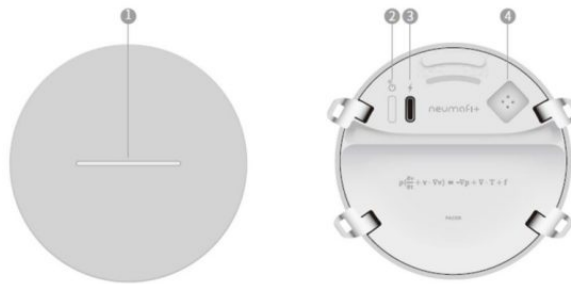
※ ※ Caution: Be sure to use only genuine PACER components. Using non-genuine components may cause product malfunctions and void the warranty.

Please use the included USB Type-C cable.

## Components

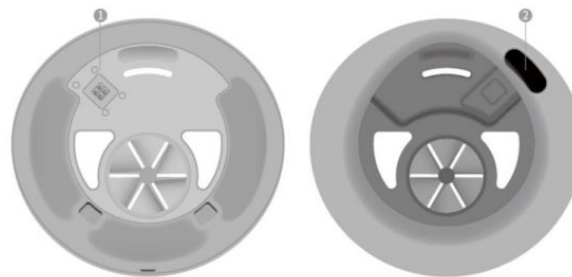
– Main Part

■ Sensor Part



1. LED light bar
2. Power button
3. Charging port
4. HR sensor connector

\* Caution: The sensor part cannot be washed. Be careful not to let it come into contact with water. After use, gently wipe it with a wet tissue or similar.



Please clean the mask part under running water after use.

※ ※ Caution: After washing, ensure it is completely dry before attaching it to the sensor part. Attaching it while wet may cause malfunctions.

## Components

– Headgear



When connecting the headgear to the sensor part, make sure to attach the connector in the same way as shown above.

Tighten the top strap firmly to prevent it from slipping.

If the bottom strap is tightened too much, the mask may slip down.

※ ※ Caution: If not worn correctly, the measurement error will increase.

## Components

– Buckle



When connecting the headgear to the sensor part, make sure to attach the connector in the same way as shown above.

Adjust the length of the straps before wearing.

※ ※ Caution: If not worn properly, measurement errors will increase.

## Starting PACER

– App download

PACER can be used to analyze running or cycling performance by downloading the 'Pacer for Running' or 'Pacer for Cycling' app.

You can download the app by searching on the App Store or Google Play, or by

scanning the QR code below.



Pacer for running  
(ios)

BEGIN:VCARD VERSION:3.0 N:Luthuf A Khan ; ORG:Crescent Universal TITLE:QR  
Codes\, Website Design\, SEO\, Domain\, Hosting  
EMAIL;TYPE=INTERNET:[sales@CrescentUniversal.in](mailto:sales@CrescentUniversal.in) URL:[www.CrescentUniversal.in](http://www.CrescentUniversal.in)  
TEL;TYPE=CELL:+919080082628 TEL:+918825668104 END:VCARD



Pacer for running  
(Android)

BEGIN:VCARD VERSION:3.0 N:Luthuf A Khan ; ORG:Crescent Universal TITLE:QR  
Codes\, Website Design\, SEO\, Domain\, Hosting  
EMAIL;TYPE=INTERNET:[sales@CrescentUniversal.in](mailto:sales@CrescentUniversal.in) URL:[www.CrescentUniversal.in](http://www.CrescentUniversal.in)  
TEL;TYPE=CELL:+919080082628 TEL:+918825668104 END:VCARD



Pacer for cycling  
(ios)

BEGIN:VCARD VERSION:3.0 N:Luthuf A Khan ; ORG:Crescent Universal TITLE:QR  
Codes\, Website Design\, SEO\, Domain\, Hosting  
EMAIL;TYPE=INTERNET:[sales@CrescentUniversal.in](mailto:sales@CrescentUniversal.in) URL:[www.CrescentUniversal.in](http://www.CrescentUniversal.in)  
TEL;TYPE=CELL:+919080082628 TEL:+918825668104 END:VCARD



Pacer for cycling  
(Android)

BEGIN:VCARD VERSION:3.0 N:Luthuf A Khan ; ORG:Crescent Universal TITLE:QR  
Codes\, Website Design\, SEO\, Domain\, Hosting  
EMAIL;TYPE=INTERNET:[sales@CrescentUniversal.in](mailto:sales@CrescentUniversal.in) URL:[www.CrescentUniversal.in](http://www.CrescentUniversal.in)  
TEL;TYPE=CELL:+919080082628 TEL:+918825668104 END:VCARD

## Starting PACER

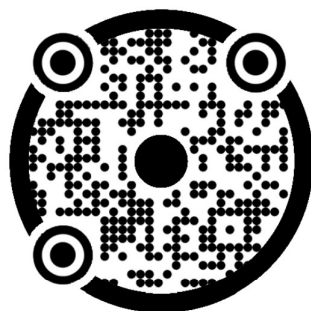
– Bluetooth connection

1. Turn on the power button of the Pacer.
2. Enable Bluetooth and location services on your smartphone.
3. Open the Pacer for Running or Pacer for Cycling app on your smartphone.
4. When registering for the app, find and register your Pacer device.
5. When using the product, connect to the registered Pacer device. Once the connection is complete, the blinking light on the Pacer will change to a steady light.

※ Caution: Only one Pacer device can be registered per account. A Pacer device registered to another account cannot be registered or connected

## Starting PACER

Wearing



You can choose to wear either the buckle-type or headgear-type strap based on your preference.

Please make sure to scan the QR code above and watch the video for proper fitting

instructions.

※ Caution: If not worn correctly, the analysis error may increase..

## **Starting PACER**

### – Bluetooth Connection Precautions

The following usage environments can affect the Bluetooth communication range and sensitivity:

- When there are obstacles like walls, metal, or the human body between the Bluetooth device and the connected device.
- When devices using the 2.4GHz frequency (such as wireless LAN devices, cordless phones, or microwaves) are being used near the device, it may affect the Bluetooth connection.

※ Caution: Placing your smartphone in a running belt on your lower back may cause disconnection issues during testing.

## **Starting PACER**

### – Testing

1. Select the type of test in the app.
2. Connect the Pacer device. Once connected, the blinking light on the sensor part will change to a steady light.
3. Set up the test details and location.
4. Review the test instructions and procedure provided by the app.
5. When you're ready, press the start button and follow the voice guidance to proceed with the test

## **Maintaining PACER**

### – Cleaning

Gently wipe the sensor part with a wet tissue or alcohol wipe.

※ Caution: Water entering the sensor part may cause malfunctions.

Please wash the mask part under running water and ensure it is completely dry.

※ Caution: Connecting the mask part to the sensor part while it is not completely dry may cause malfunctions.

The strap, buckle, and headgear can be washed just like regular clothing.

## Battery

Connect the larger side of the charging cable (USB-A) to a standard USB-A socket (sold separately), and connect the smaller side (USB-C) to the charging port on the PACER sensor part.

The sensor part's light bar (LB) will emit a red light while charging and will turn green when fully charged.

If the red light blinks, it indicates that the battery is too low for use, so please charge the device before using it.

To ensure battery maintenance and longevity, use the provided charging cable and a standard charging adapter. Please connect directly to a wall socket, not to a laptop or external charging device.

**[Note]** The charging time is approximately 1 hour, and the operating time is up to 3 hours.

The charging and operating times may vary depending on the charging conditions (such as temperature) and the battery condition (such as usage duration and remaining battery level)

### – Malfunctions

Cases	Causes and Solutions
The device won't turn on.	Has the battery run out? •Please try charging the battery.
	Is the surrounding temperature too high or too low? •Please try operating the device again at a suitable temperature.
The device is not charging.	Are the charging cable and the charging port properly connected? •Please check the connection between the cable and the charging port. •Please check if there is any debris in the charging port..

The device is not syncing with the app.	<p>Is your smartphone's location and Bluetooth functionality turned on?</p> <ul style="list-style-type: none"> <li>• Please check if the location and Bluetooth functions are enabled.</li> <li>• Try turning the location and Bluetooth functions off and then on again.</li> </ul>
	<p>Is the device too far from your smartphone?</p> <ul style="list-style-type: none"> <li>• If the distance between the device and the smartphone is too far, the connection may not be stable.</li> </ul>
	<p>Is the app the latest version?</p>

	<ul style="list-style-type: none"> <li>• • if the app is not the latest version, it may fail to detect the device.</li> </ul>
Others	<p>For other issues, please contact our website or customer service.</p>

– Safety

### **Safety Precautions**

The following 'Warning' and 'Caution' statements are provided to prevent unexpected risks or damage. Please make sure to review them carefully.

### **Warning**

Failure to follow the instructions below may result in serious injury or death.

- (Usage) This product is not a mask categorized as a quasi-drug (surgical, health, or dropletblocking mask) under the Pharmaceutical Affairs Act, nor is it a medical device (respiratory protection) under the Medical Device Act. (Check required)
- (Usage) If you experience difficulty breathing, dizziness, or headaches while using the product, stop using it immediately and consult with a doctor or specialist before resuming use.
- (Usage) Do not use the product in areas where oxygen supply is insufficient or where

you may be exposed to harmful substances.

- (Usage) Refrain from using the product after consuming alcohol or medication
- (Charging) If the charging port or power cable is submerged in water, stop using it immediately and disconnect the cable.
- (Storage) Do not store the product near excessive heat or flammable materials.
- (Battery) If there is an issue with the battery, do not attempt to disassemble or replace it yourself. Always replace the battery through the service center.

## Caution

Failure to follow the instructions below may result in minor injuries or product damage.

- (Storage) Do not submerge the product in water or store it in places with high humidity.
- (Charging) Use the genuine charging cable when charging. Unauthorized chargers may cause malfunctions.
- (Charging) High-voltage power sources can shorten the battery's lifespan.
- (Usage) Before using, check if the product is clean and free from foreign substances.

## Others

### – Radio Frequency Exposure

This device transmits and receives radio frequency (RF) electromagnetic waves (microwaves) in the 2402 MHz to 2480 MHz frequency range during operation, enabling communication with Bluetooth-enabled mobile devices..

### – Battery

Rechargeable batteries have a long lifespan if properly maintained. However, if not used for an extended period, the capacity may decrease after only a few uses. Do not expose the battery to extremely high or low temperatures, such as above 50°C or below -10°C. To maintain maximum battery capacity, use the battery at room temperature. If the battery is used in low temperatures, its capacity will decrease. The battery can only be charged at temperatures between 0°C and 45°C.

### – Product Spec

Product Name	Respiratory Analysis Mask
--------------	---------------------------

Model Name	PACER
Size	11.4 x 10.7 x 9.6 cm (4.4 x 4.2 x 3.7 in)
Weight	116.2 g (4.09 oz)
Material	ABS plastic, PP plastic, woven nylon, silicone rubber, acryl
Bluetooth	Bluetooth 5.2 BLE
Battery	3.7V / 600 mAh
Duration	up to 4 hours
Charging	USB — A to C type
Frequency Range	2402 — 2480 MHz
Connection Range	Max 20 m (Max 65.6 ft)
Working Temperature	-10°C — 50°C (14°F — 122°F)
Storage Temperature	-10°C — 50°C (14°F — 122°F)
Manufacture Date	Indicated separately on the product (S/N 5-8nd : Manufacture Date/Week Indicated)

### – Warranty

In the event of a product malfunction, please contact your place of purchase or the customer service center below.

- Customer Service Email: [help@neumafit.com](mailto:help@neumafit.com)

We will inform you of compensation eligibility and criteria within 5 days of your request, and any compensation will be resolved within 10 days from the notification date.

Product Warranty Period (Free/Paid Service – 1 year)

Customers are entitled to warranty service for any malfunctions that occur during product use for a period of 1 year/month.

The warranty period is calculated from the date of purchase, so please ensure that you fill out the product warranty form at the time of purchase and retain your purchase receipt.

If the purchase date cannot be verified, the warranty period will be applied starting 3 months after the manufacture date or import clearance date.

This warranty certificate will not be reissued, so please keep it in a safe place.

### **Free Service**

- During the product warranty period, you are entitled to free service for performance or functional defects that occur naturally under normal usage conditions.
- If a major quality issue occurs within 10 days of purchase, you may receive an exchange or refund from the place of purchase.
- When requesting an exchange or refund, please bring the purchase receipt and all components of the product.

### **Paid Service**

- If a malfunction is caused by the consumer's intentional or accidental actions, service charges may apply. The following situations are subject to this:
- Malfunctions caused by unauthorized disassembly, modification, or user negligence (e.g., water damage, physical damage).
- Performance or functional issues that occur due to failure to follow the 'Caution' section of this manual.
- Malfunctions caused by repairs performed by unauthorized personnel.
- Other malfunctions caused by usage that deviates from the correct usage of the product.

### **– FCC Compliance Statement**

This device complies with part 15 of the FCC Rules.

Operation is subject to the following two conditions : (1) This device may not cause harmful interference, and (2) This device must accept any interference received, including interference that may cause undesired operation.

This equipment has been tested and found to comply with the limits for a Class B digital

device, pursuant to part 15 of the FCC Rules. These limits are designed to provide reasonable protection against harmful interference in a residential installation. This equipment generates, uses and can radiate radio frequency energy and, if not installed and used in accordance with the instructions, may cause harmful interference to radio communications. However, there is no guarantee that interference will not occur in a particular installation. If this equipment does cause harmful interference to radio or television reception, which can be determined by turning the equipment off and on, the user is encouraged to try to correct the interference by one or more of the following measures:

- Reorient or relocate the receiving antenna.
- Increase the separation between the equipment and receiver.
- Connect the equipment into an outlet on a circuit different from that to which the receiver is connected.
- Consult the dealer or an experienced radio/TV technician for help.

**CAUTION:** Changes or modifications not expressly approved by the party responsible for compliance could void the user's authority to operate the equipment.

\* This equipment complies with FCC radiation exposure limits set forth for an uncontrolled environment.

### **Industry Canada Statement**

This device complies with Industry Canada license-exempt RSS standard(s). Operation is subject to the following two conditions: (1) this device may not cause interference, and (2) this device must accept any interference, including interference that may cause undesired operation of the device.



## **Documents / Resources**



☐ Save my name, email, and website in this browser for the next time I comment.

**Post Comment**

**Search:**

e.g. whirlpool wrf535swhz

**Search**

[Manuals+](#) | [Upload](#) | [Deep Search](#) | [Privacy Policy](#) | [@manuals.plus](#) | [YouTube](#)

This website is an independent publication and is neither affiliated with nor endorsed by any of the trademark owners. The "Bluetooth®" word mark and logos are registered trademarks owned by Bluetooth SIG, Inc. The "Wi-Fi®" word mark and logos are registered trademarks owned by the Wi-Fi Alliance. Any use of these marks on this website does not imply any affiliation with or endorsement.