



# L O C PRO ADVANCED LPH Harness Instruction Manual

[Home](#) » [L O C PRO ADVANCED](#) » L O C PRO ADVANCED LPH Harness Instruction Manual 

## Contents

- [1 L O C PRO ADVANCED LPH Harness](#)
- [2 Product Usage Instructions](#)
- [3 Wiring Connection Chart \(All Models\)](#)
- [4 Example Installation](#)
- [5 ANC vs Amplifier](#)
- [6 Documents / Resources](#)
- [7 Related Posts](#)

**L·O·C PRO  
ADVANCED**

## L O C PRO ADVANCED LPH Harness



## Product Information

The LPH Harness is a wiring harness designed to work on OEM non-amplified systems. It is used to connect an aftermarket amplifier to the OEM radio of a vehicle. The harness is equipped with a red wire for the aftermarket system turn-on and is designed to use DC offset to turn on as well as trigger the REM OUT on the LPA.

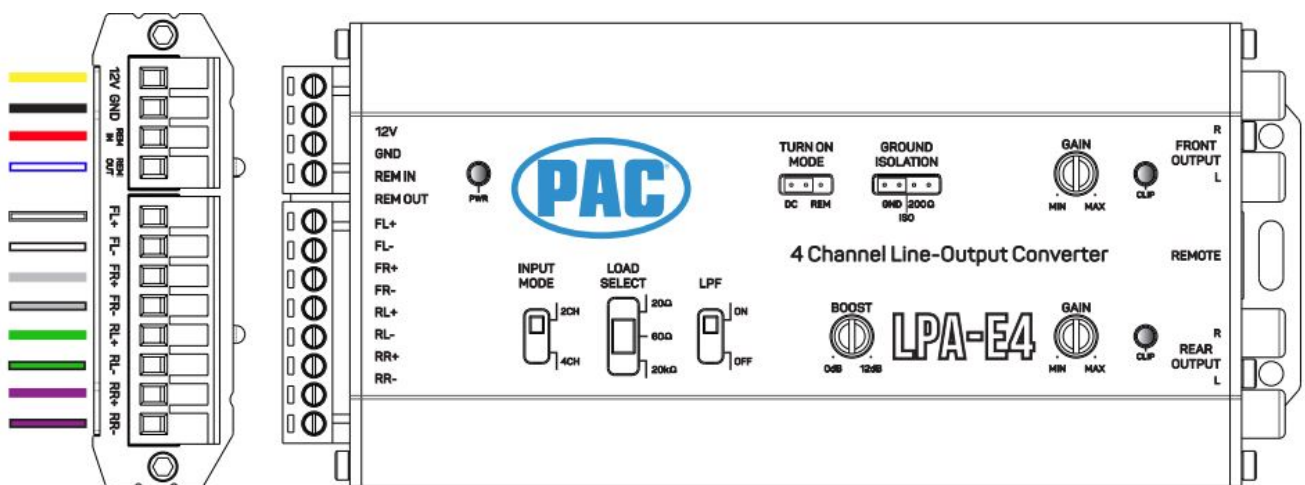
The harness comes with a wiring connection chart that provides instructions on how to connect the harness to the OEM radio of the vehicle and to the aftermarket amplifier. It is important to note that the harness is provided with an inline fuse installed, which must be removed prior to installation and reinserted once finished.

The harness is compatible with all LPA models and can be used for both 4-channel and mono amplifiers. For 4-channel amplifier installations, the harness must be cut, while for mono amplifier installations, the harness cut is not required.

## Product Usage Instructions

1. Remove the inline fuse from the harness prior installation.
2. Connect the loose wires on the LPH harness to the LPA module and the RCA cables to the aftermarket amplifier.
3. For 4-channel amplifier installations, cut the harness as per the example installation instructions provided in the manual and insulate it using electrical tape.
4. Connect the red butt connector on the harness to the aftermarket system turn-on for your amplifiers.
5. Fully open terminals before inserting wire.
6. For vehicles that do not provide ACC source, the harness will not have a red wire to connect. In this case, use DC offset to turn on as well as trigger the REM OUT on the LPA.
7. For LPA-E4 models, move the jumper based on your application.
8. Reinsert the inline fuse into the harness once installation is complete.

## Wiring Connection Chart (All Models)



## MODELS:

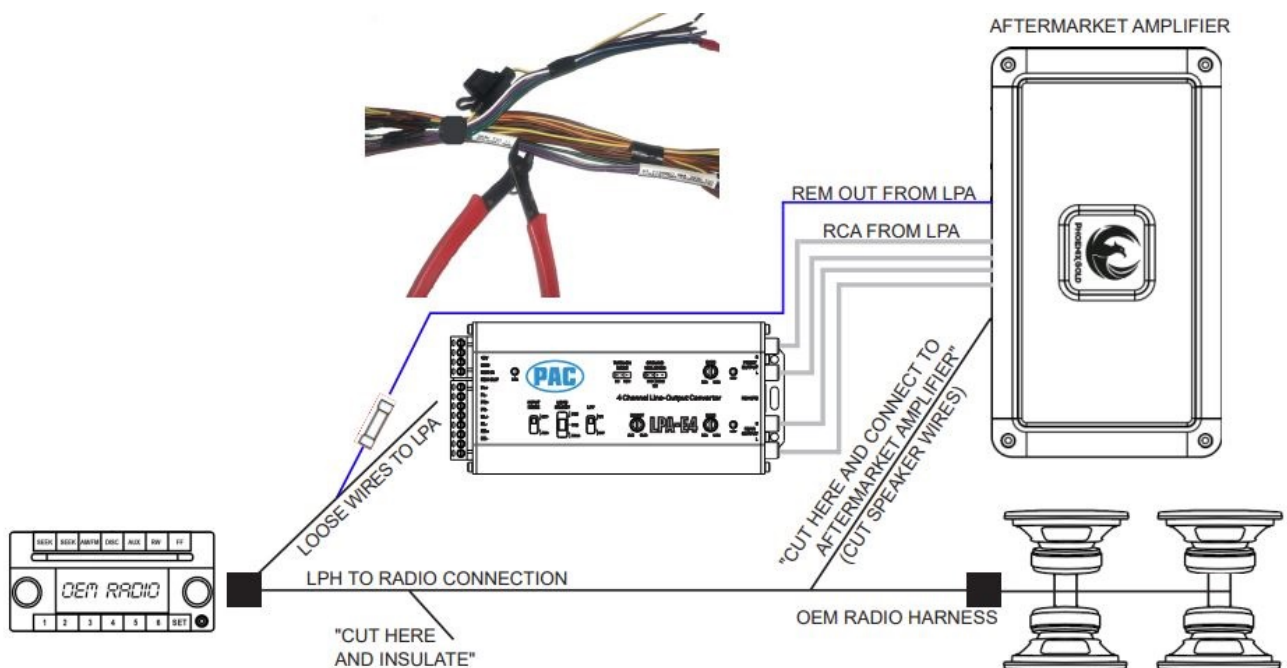


Wire Color	Function
Yellow	Constant 12V +
Black	Ground
Red	ACC / Rem Input
Blue/White	Amp Turn On +
White	Front Left +
White/Black	Front Left -
Gray	Front Right +
Gray/Black	Front Right -
Green	Rear Left +
Green/Black	Rear Left -
Purple	Rear Right +
Purple/Black	Rear Right -

## Example Installation

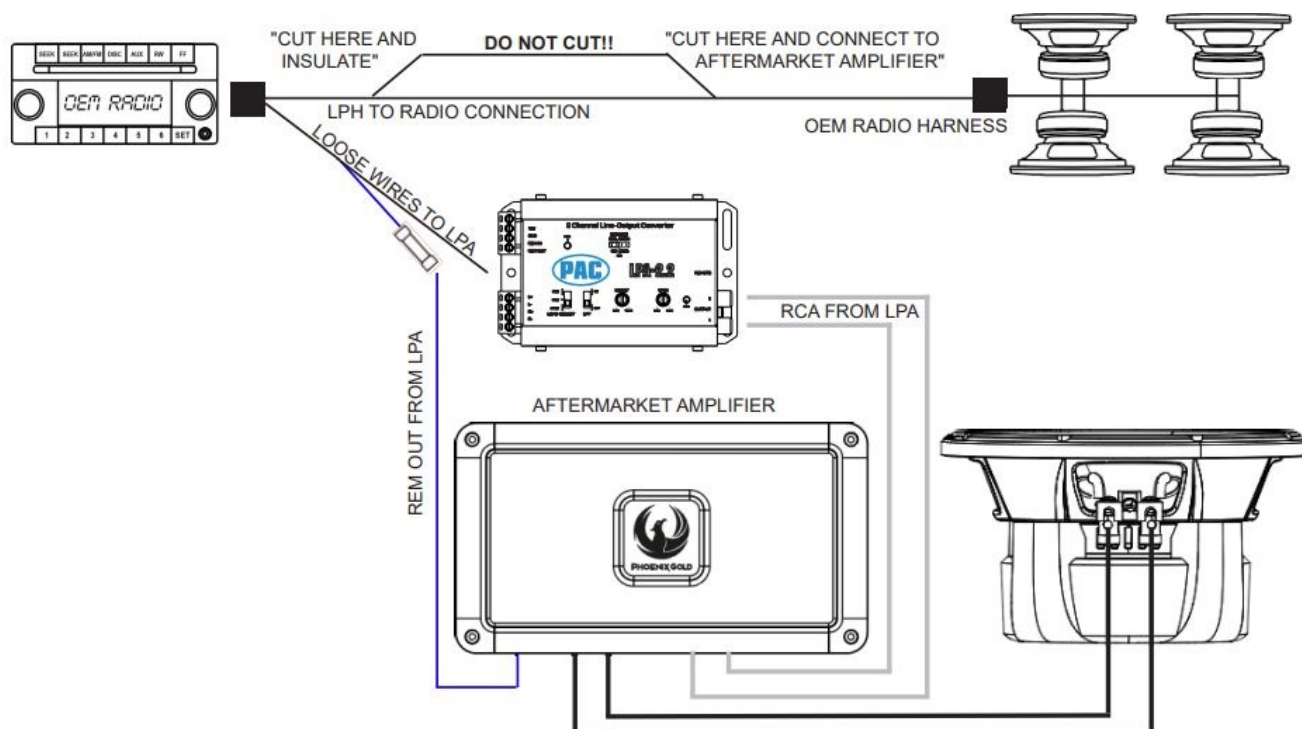
### 4-Channel Amplifier – (HARNESS CUT REQUIRED)

- Cut the harness close as possible to the “CUT HERE AND INSULATE” label. You must insulate wires to prevent damage to OEM radio.
- The cut speaker wires will need to be connected to your aftermarket amplifier.(REFER TO LABEL ON HARNESS)
- Please refer to the chart on the first page for wiring your loose wires to your LPA.
- This harness is designed to work on OEM NON-AMPLIFIED systems.

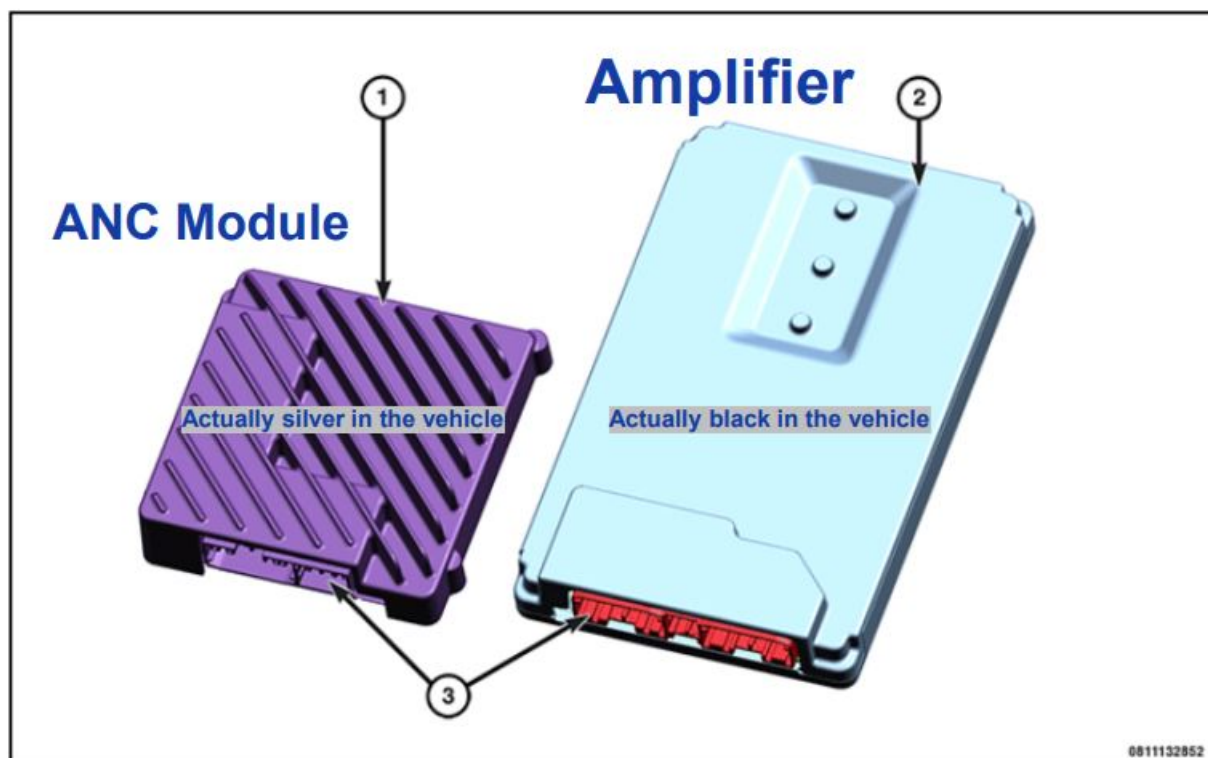


### Example Installation – Mono Amplifier – (HARNESS CUT NOT REQUIRED)

- If using a 2-Channel input LPA use the front speaker wires and insulate the remaining rear speaker wires.
- DO NOT CUT the speaker wires inbetween the “CUT HERE” Labels in order to keep the factory speakers functional.
- This harness is designed to work on OEM NON-AMPLIFIED systems.



## ANC vs Amplifier

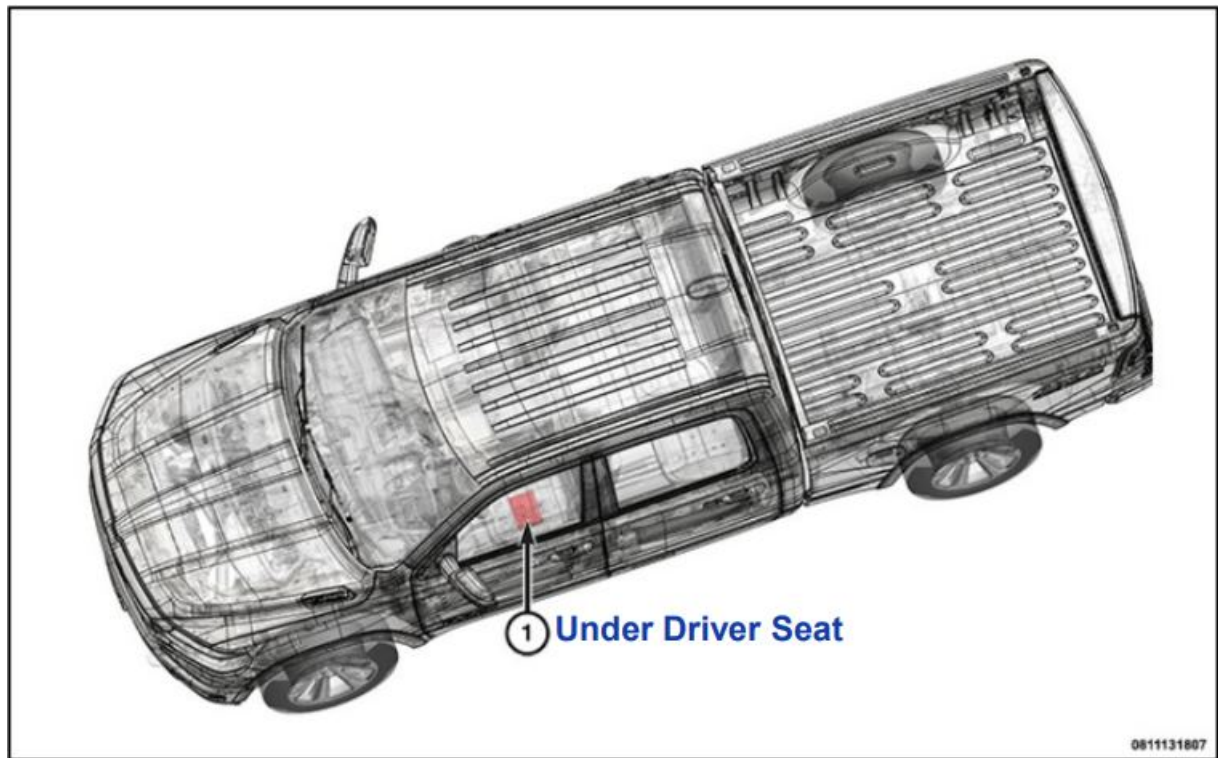


- Amp is larger/Black
- ANC is small/Silver
- Amp has 3 plugs

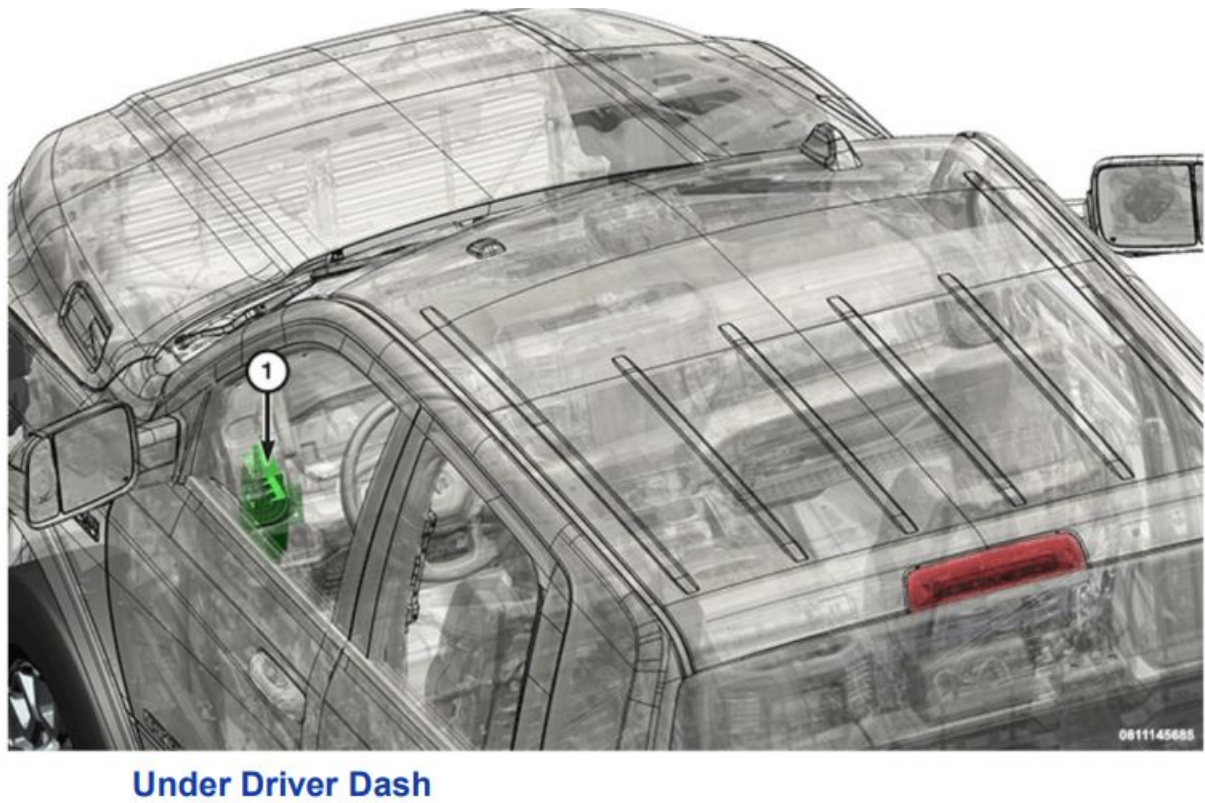


- ANC has 2 plugs

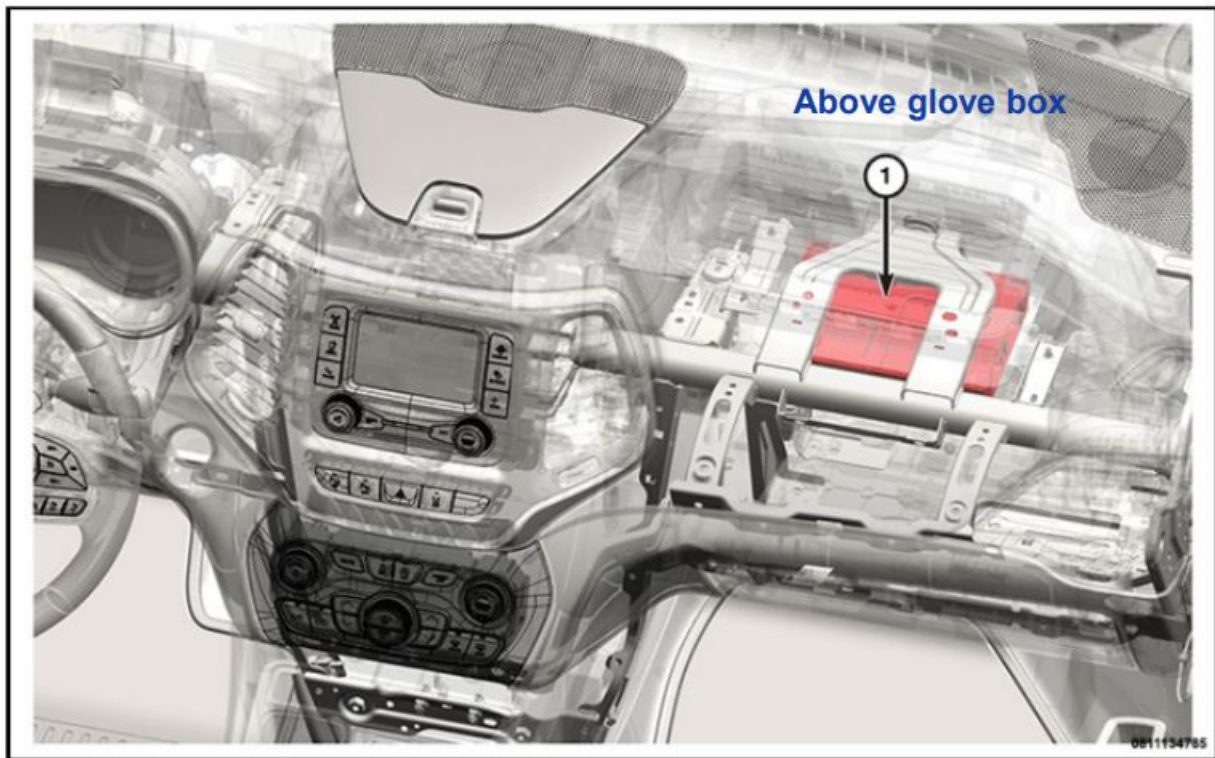
#### ANC / Amp Location 2019+ RAM 1500



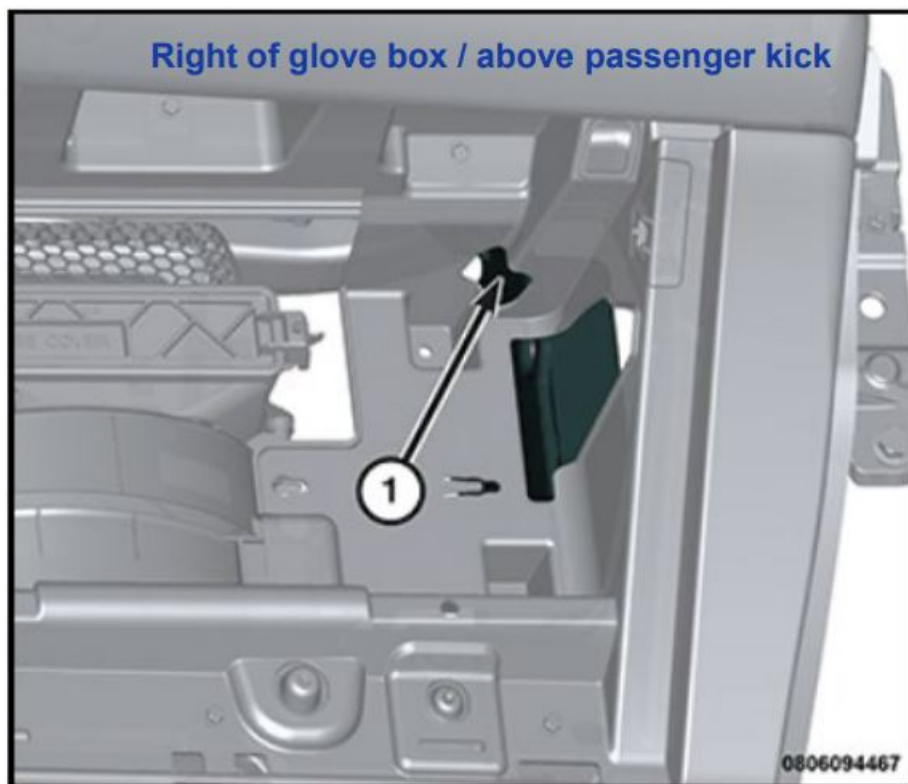
#### ANC / Amp Location 2019+ RAM 2500/3500



#### ANC / Amp Location Jeep Cherokee

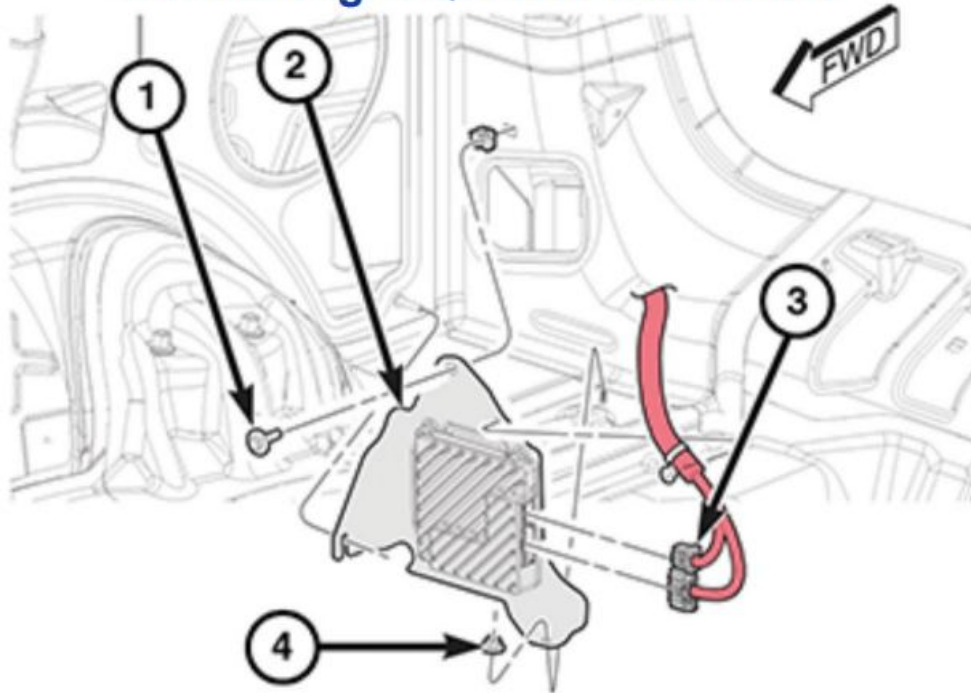


**ANC / Amp Location Chrysler Pacifica**



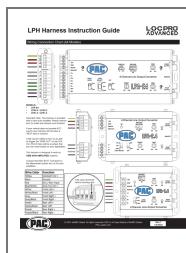
**ANC Location 2015-2016 Grand Cherokee**

## Behind Right Quarter Trim Panel



© 2021 AAMP Global. All rights reserved. PAC is a Power Brand of AAMP Global. [PAC-audio.com](https://www.pac-audio.com)

## Documents / Resources



[L O C PRO ADVANCED LPH Harness](#) [pdf] Instruction Manual  
LPH Harness, LPH, Harness