

L-LINK Long Range USB WiFi Adapter



L-LINK Long Range USB WiFi Adapter User Manual

[Home](#) » [Support](#) » L-LINK Long Range USB WiFi Adapter User Manual 

Contents

- 1 L-LINK Long Range USB WiFi Adapter
- 2 Online Setup Support
- 3 Frequently Asked Questions
- 4 Video Black network card with base
- 5 References

L-LINK

L-LINK Long Range USB WiFi Adapter



Customer Support



Messenger



Instagram

Email: LLinkwifi@gmail.com

<https://www.LLinkwifi.com>

99% of issues are solved by Email

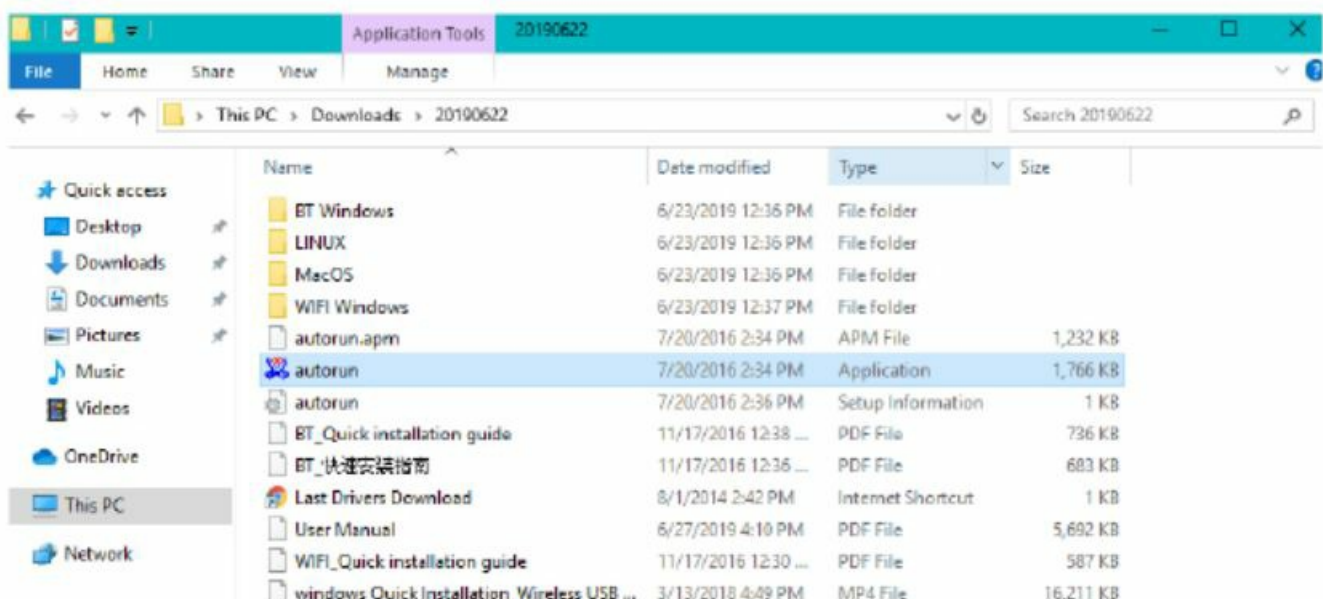
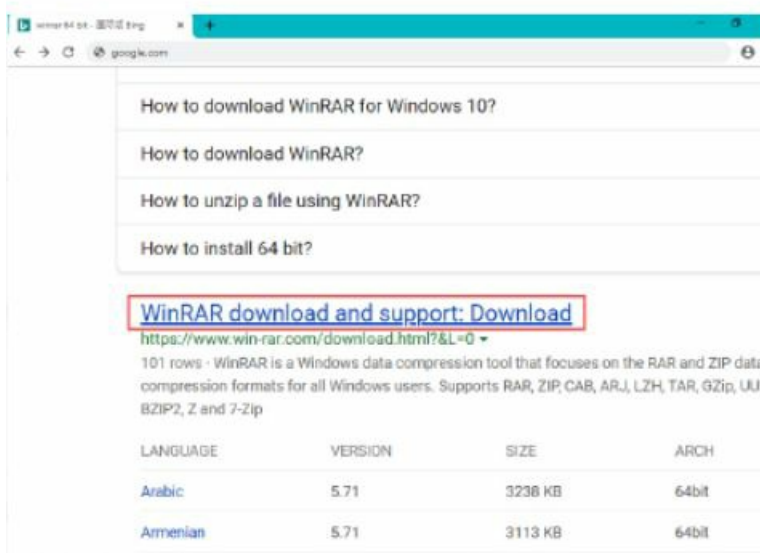
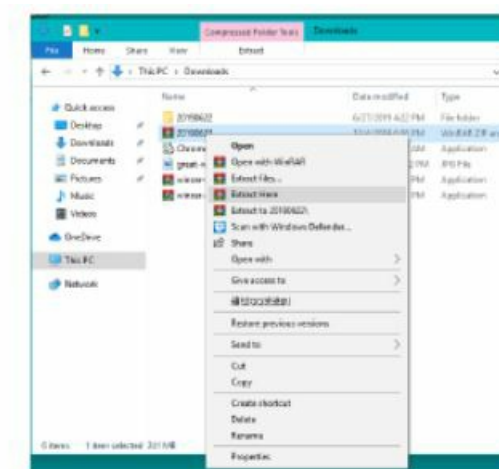


You need to download this soft.

Email us your Order ID for any problem. We will change the new wifi adapter for any problem in one year. Enjoy the wifi adapter.

No CD How to Install Driver (FAQ)

1. There is a link in the user manual, if the link does not work
2. email us. LLinkwifi@gmail.com
3. Driver download: <https://www.llinkwifi.com/down/class/>
4. After you download driver files, you need to Extract the files, you may need a winRAR soft.



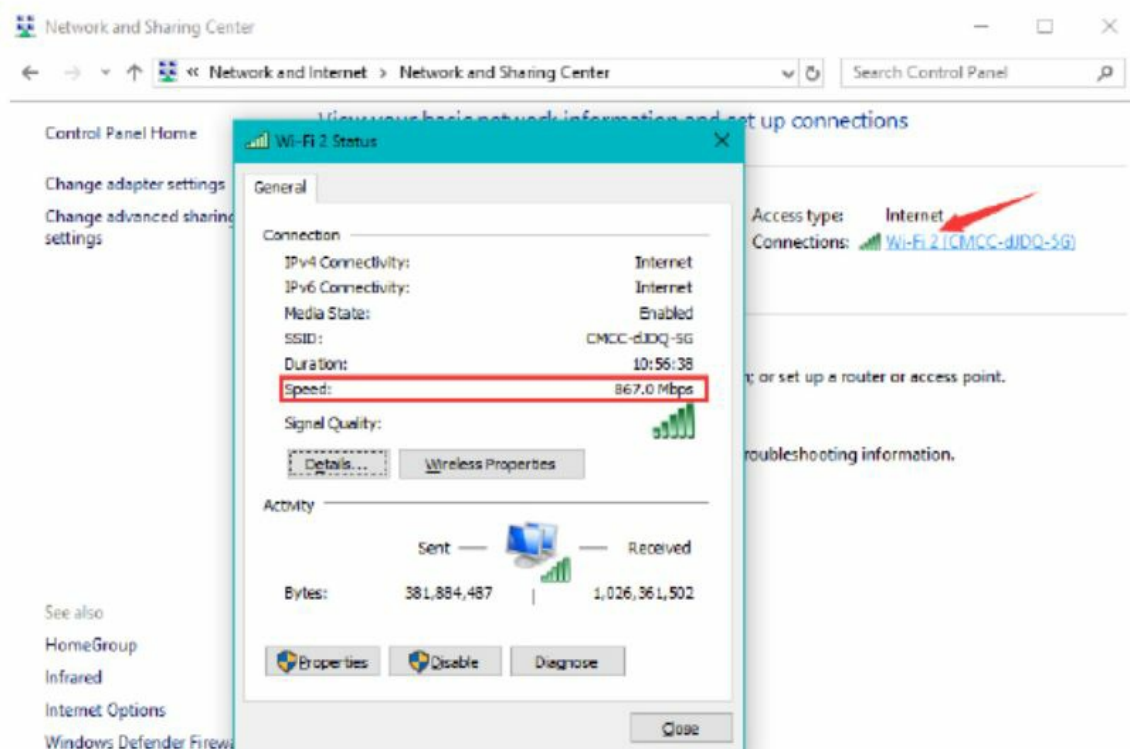
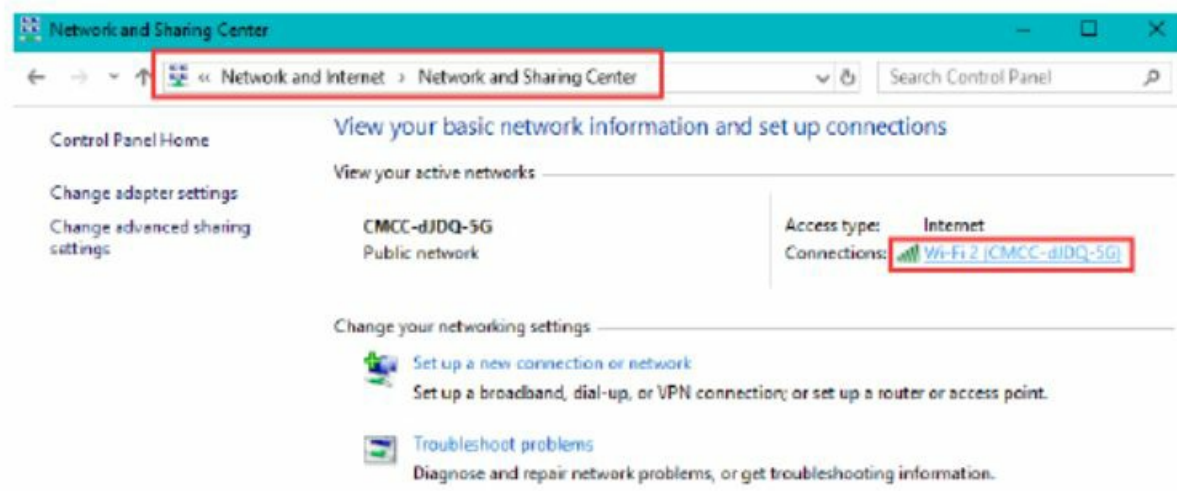
Then you install driver for your windows now.

Why I test Speed Slow (FAQ)

First, there is 3 ways to test the speed:

1. www.speedtest.net
2. www.fast.com
3. search "speed test" on google.com or bing.com you can check 2-3 ways. Besides the speed also depends on your Internet Service Provider. You can test the speed by Internet peak and free time. Simple you test in the night or morning to see it also.

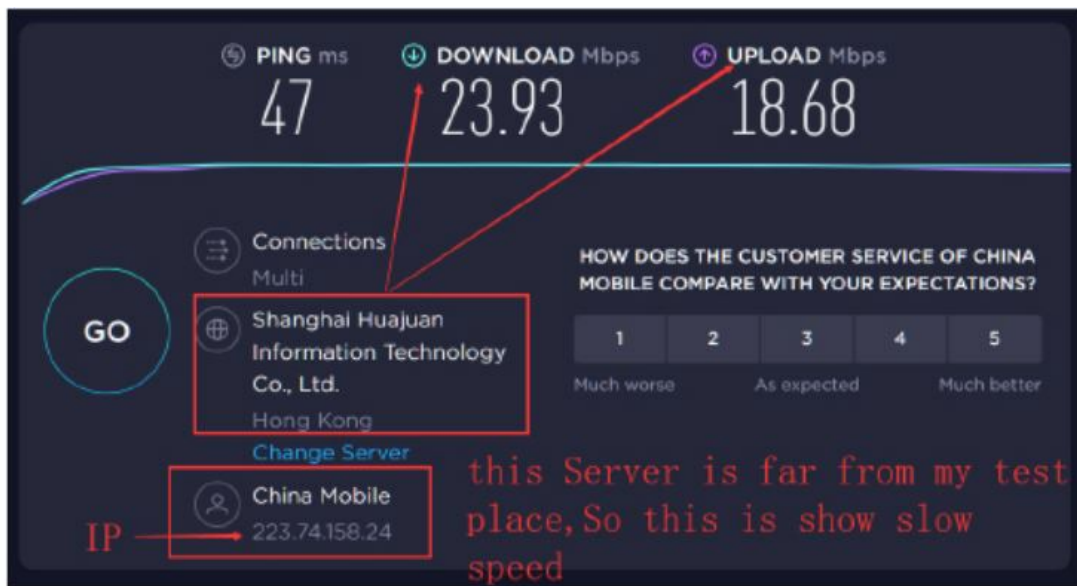
Important tips: Before you test, Please check you connect speed.



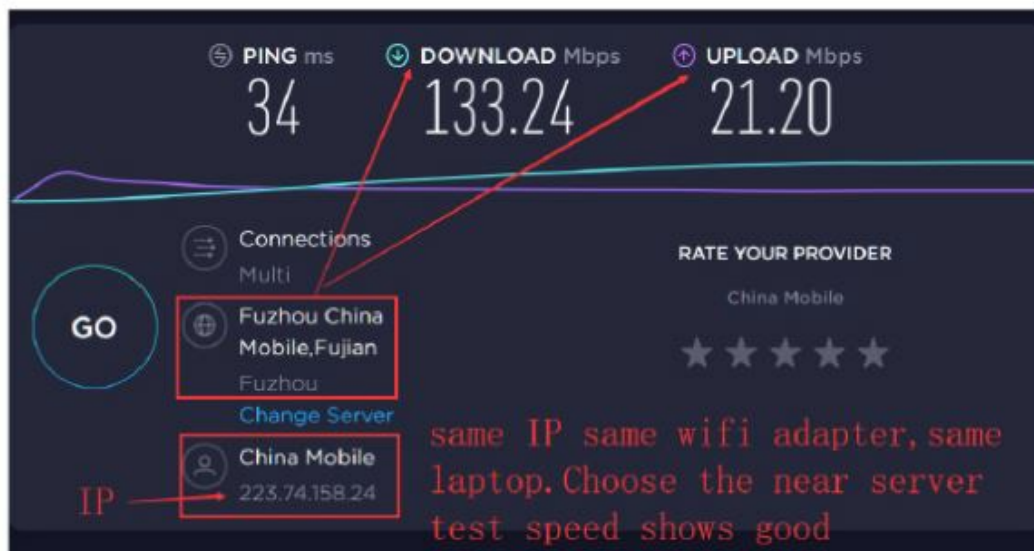
You can test with the same Server to compare the speed Because speedtest.net chooses the Server at random. So sometimes they choose the far one, the test speed is slow. If they choose the nearest service, it will be fast.

Here It is the same wifi adapter, a 5ghz connect.

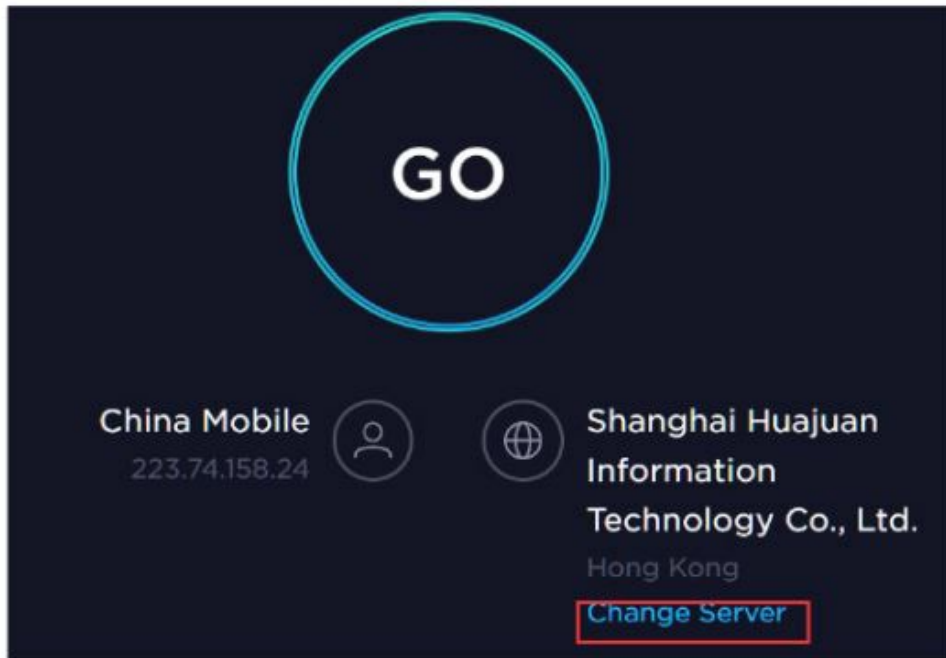
As follow is the same wifi adapter test result first one is the far server the speedtest chose itself.



The Second one i choose the near sever one,



You can follow our page: nineplus99 we have online support.



my internet is China mobile internet, so i chose Fuzhou China Mobile Fujian which is near our city Shenzhen you can choose the near your city server when you test speed.



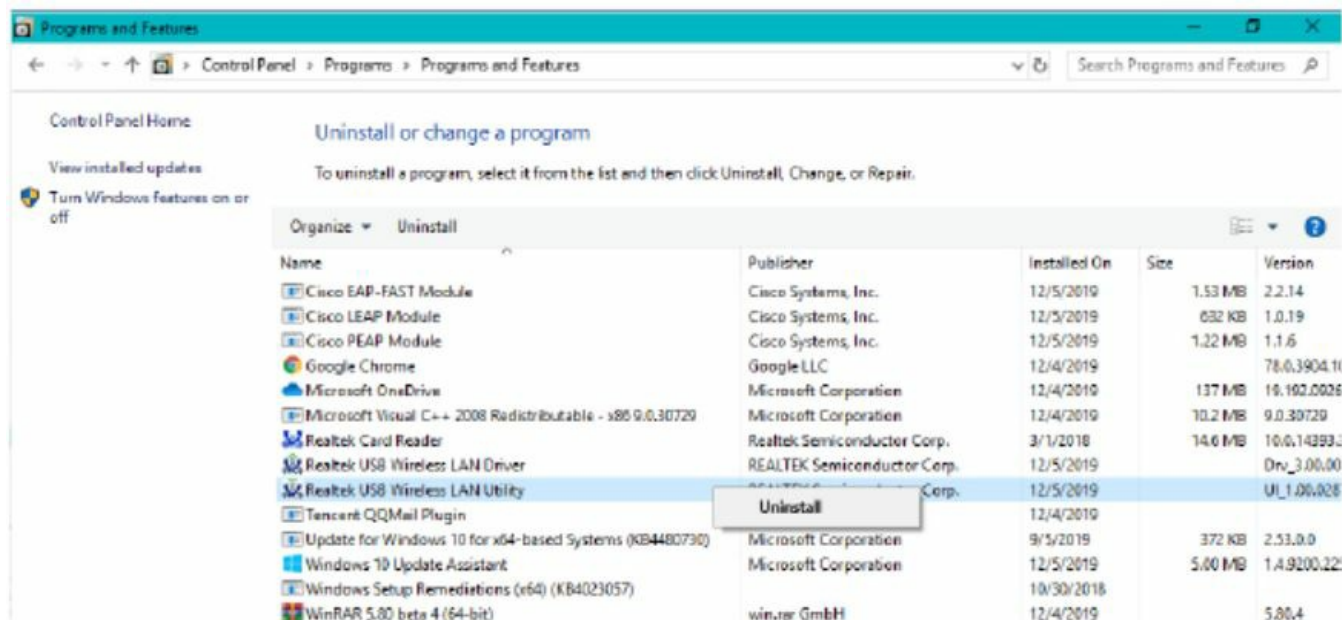
Then You can try it again.

Repeatedly connects and disconnects always (FAQ)

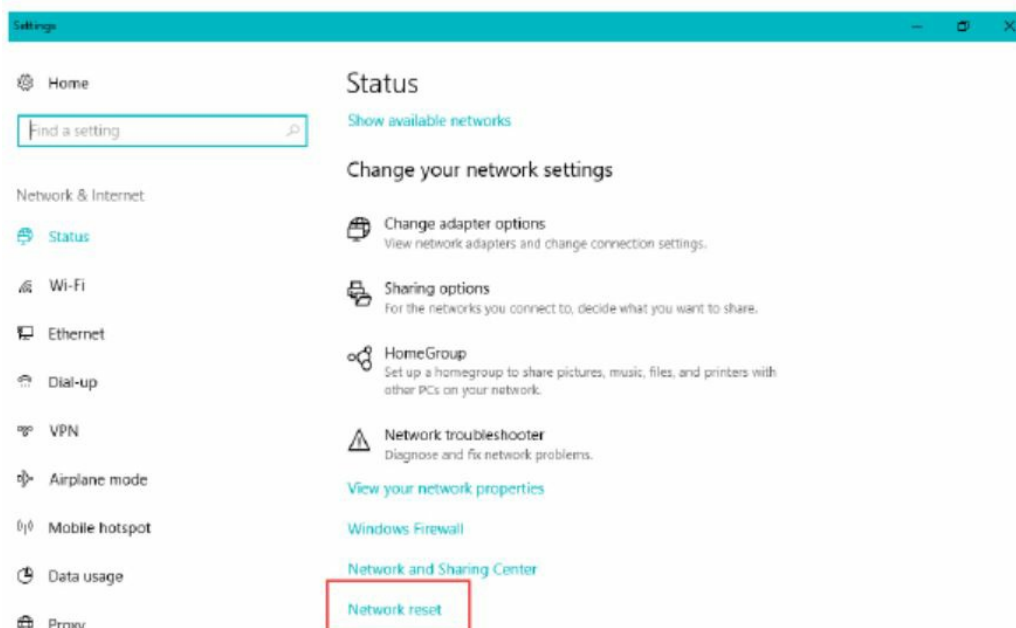
1. Change a usb port for this wifi adapter. Let it connected (wait 1-2mins)



2. uninstall the soft just uninstall Realtek USB Wireless LAN Utility.



If up two steps cannot work, you uninstall all the drivers and do a network reset.



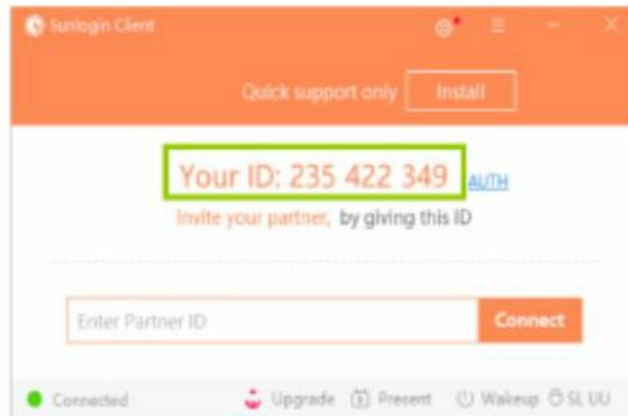
Then connect the wifi again.

Online Setup Support

How to do online setup for you

First it needs your computer can access to the internet by cable

Solution 1: Download the online support software:



Solution 2: Use Teamviewer software <https://www.teamviewer.com> you need to download this software.

Send us this soft ID and Password to our email.

Email: LLinkwifi@gmail.com

In case of device failure, you can replace it with a new device free of charge and with no justification within a year.

1. Unable to connect and install the driver. It is probably caused by a conflict with other network devices or a wrong driver version. Please try another version and test if it is ok or not.
2. When the Wi-Fi adapter is at work, the wireless network is cut off and fails to reconnect, try different USB interfaces. Please contact us to replace it with a new device.
3. After it is used for a certain period, internet speed slows down or it fails to work, please contact us to replace it with a new device.
4. Under these circumstances, including the Wi-Fi adapter failing to work after installation, the system automatically forbids the adapter or an X mark appearing on the taskbar, please contact us to ask for ways to fix them
5. In need of online technological installation, please email us or contact online customer service on our website. We are ready to serve you at any time.
6. When the internet speed is very slow although installation has been successfully done, please open Internet Connection and check if the connection speed for the WiFi adapter is 5G-867Mbps or 2G-300Mbps. If 5G is available, please shift to 5G and test the internet speed. Please test with bing.com google.com fast.com. If the test still proves the speed is extremely slow, please contact us to replace it with a new device.

The Following Illustrations Apply to the WiFi Adapter 600Mbps and 1200Mbps.

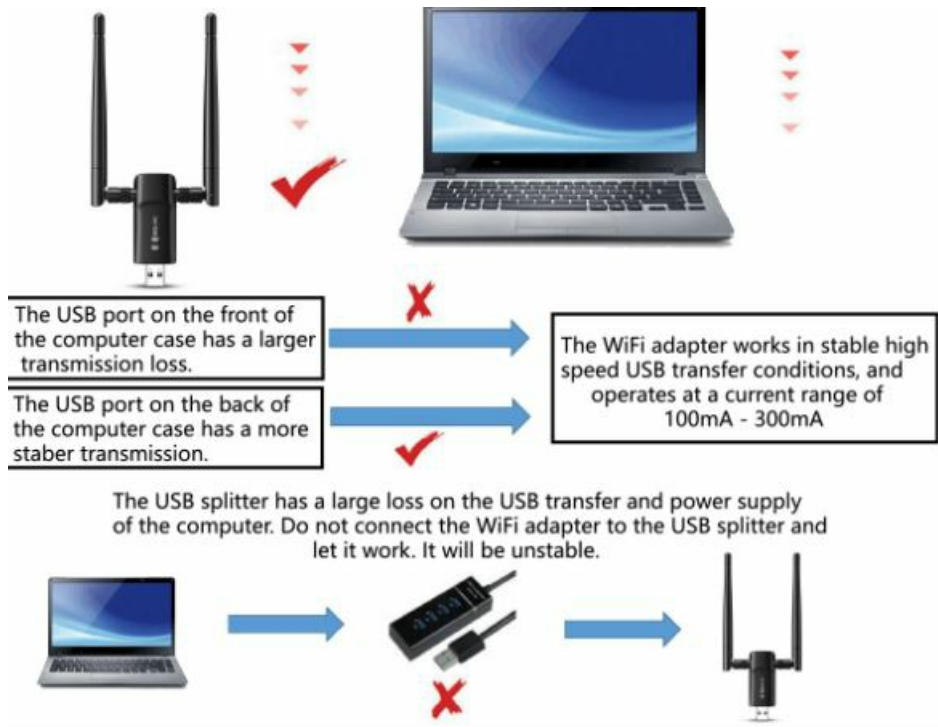
NOTE

Do not connect the WiFi adapter to please connect to the interface on the back of the Computer Case.

The USB interface on the front of the computer has the risk of large USB transmission loss and insufficient power supply, resulting in unstable operation of the Wifi adapter.



The USB interface on the back of the computer chassis provides stable USB transmission and power supply. The Wifi adapter needs to be connected to the USB interface to meet the high- speed transmission requirements.



Frequently Asked Questions

What is the L-Link USB WiFi Adapter and how does it enhance my internet connection?

The L-Link USB WiFi Adapter is a 1300Mbps long-range USB 3.0 device designed to provide your PC or laptop with a fast and stable wireless connection. It operates on dual-band frequencies (2.4GHz and 5.8GHz) and is equipped with a 5dBi high-gain antenna for better signal reception and transmission.

Can the L-Link USB WiFi Adapter be used with Windows 11?

Yes, the L-Link USB WiFi Adapter is compatible with Windows 11, as well as Windows 10, 8.1, 8, and 7, providing versatile usage across different operating systems.

Is the installation process for the L-Link USB WiFi Adapter easy?

The L-Link USB WiFi Adapter is designed for easy installation. Simply plug it into a USB 3.0 port on your laptop or desktop, and the device should be automatically recognized by most Windows operating systems.

Does the L-Link USB WiFi Adapter support both 2.4GHz and 5.8GHz networks?

Yes, the L-Link USB WiFi Adapter supports dual-band connectivity, allowing you to connect to both 2.4GHz and 5.8GHz networks for improved speed and less interference.

What is the range of the L-Link USB WiFi Adapter?

The L-Link USB WiFi Adapter, with its 5dBi high-gain antenna, offers long-range connectivity. However, the actual range can vary based on environmental factors such as physical obstructions and wireless interference.

Can I use the L-Link USB WiFi Adapter on multiple devices?

The L-Link USB WiFi Adapter can be used on any compatible device with a USB 3.0 port. However, it can only be connected to one device at a time.

What speeds can I expect with the L-Link USB WiFi Adapter?

The L-Link USB WiFi Adapter offers speeds up to 1300Mbps, subject to your internet plan, router capabilities, and environmental factors.

Is there a driver required for the L-Link USB WiFi Adapter?

The L-Link USB WiFi Adapter may require a driver, which is usually automatically installed upon connection. For certain operating systems, you may need to download the driver from the manufacturer's website.

How does the 5dBi high-gain antenna of the L-Link USB WiFi Adapter improve connectivity?

The 5dBi high-gain antenna on the L-Link USB WiFi Adapter enhances signal strength and stability, providing better performance over longer distances compared to standard antennas.

What should I do if the L-Link USB WiFi Adapter is not being detected by my computer?

If your computer does not detect the L-Link USB WiFi Adapter, try reconnecting it, checking for driver updates, or testing it on another computer to diagnose the issue.

Can the L-Link USB WiFi Adapter be used for gaming?

The L-Link USB WiFi Adapter is suitable for gaming, offering high-speed connectivity and dual-band options to minimize lag and interference.

Is the L-Link USB WiFi Adapter backward compatible with USB 2.0 ports?

The L-Link USB WiFi Adapter is compatible with USB 2.0 ports, but for optimal performance, a USB 3.0 port

is recommended due to its higher data transfer speeds.

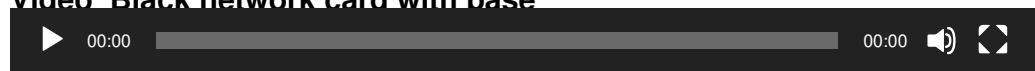
How does the dual-band feature of the L-Link USB WiFi Adapter benefit me?

The dual-band feature of the L-Link USB WiFi Adapter allows you to switch between 2.4GHz (for wider coverage) and 5.8GHz (for less interference and higher speeds), providing flexibility based on your network environment.

Where can I find technical support for the L-Link USB WiFi Adapter?

Technical support for the L-Link USB WiFi Adapter can usually be found on the manufacturer's website, where you can access FAQs, download drivers, and contact customer service for further assistance.

Video Black network card with base



[Download this PDF Manual](#)
[Content/uploads/2024/01/Black-network-card-with-base.mp4](#)

[L-LINK Long Range USB WiFi Adapter User Manual](#)

References

- [User Manual](#)