

## L Forward Use WiFi To Connect To The Internet Instructions

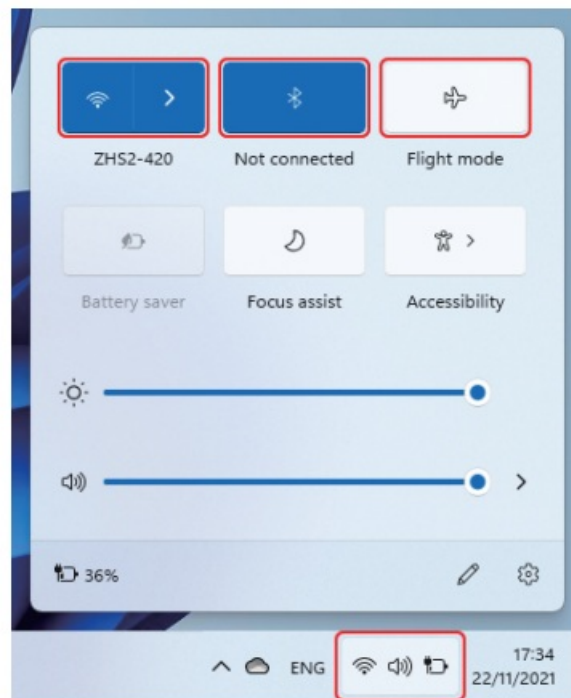
[Home](#) » [L Forward](#) » L Forward Use WiFi To Connect To The Internet Instructions 

### Contents

- [1 L Forward Use WiFi To Connect To The Internet](#)
- [2 Wi-fi, Bluetooth, Flight mode](#)
- [3 System reset](#)
- [4 BIOS-Setting & Bootmanager](#)
- [5 Troubleshooting](#)
- [6 FCC Statement](#)
- [7 Documents / Resources](#)
- [8 Related Posts](#)

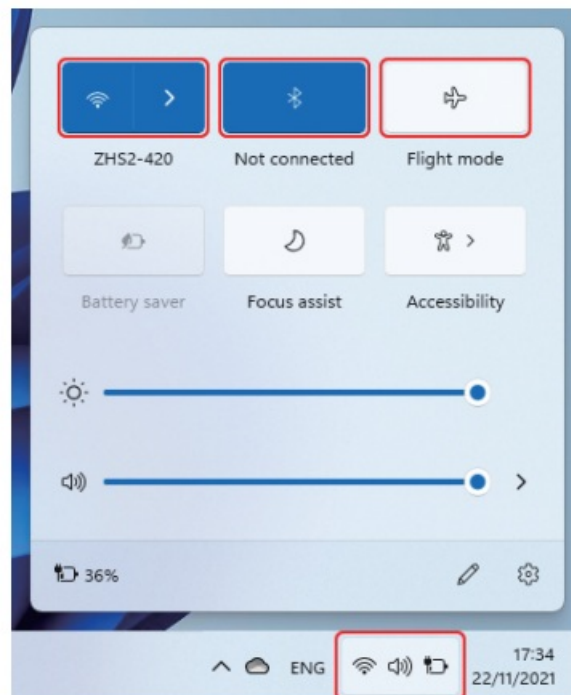
# L Forward

L Forward Use WiFi To Connect To The Internet

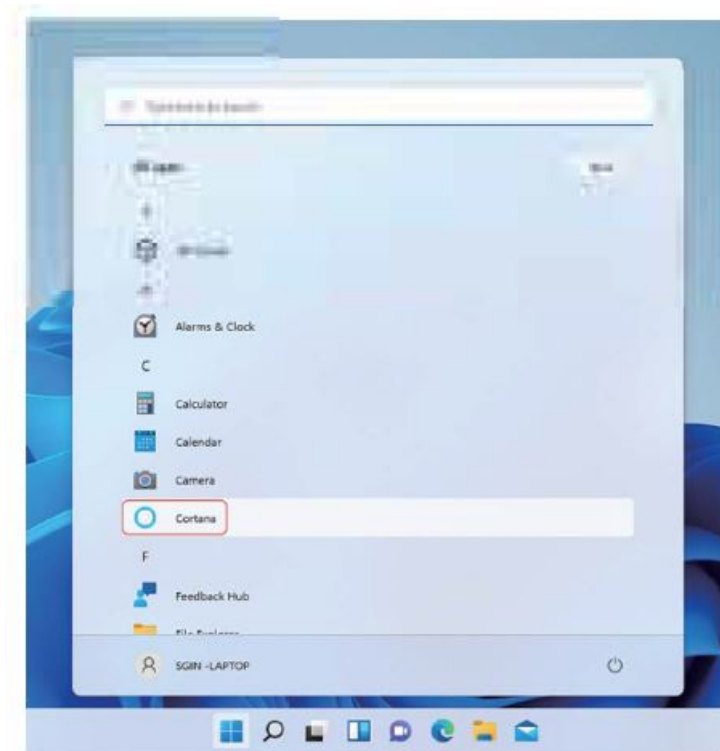
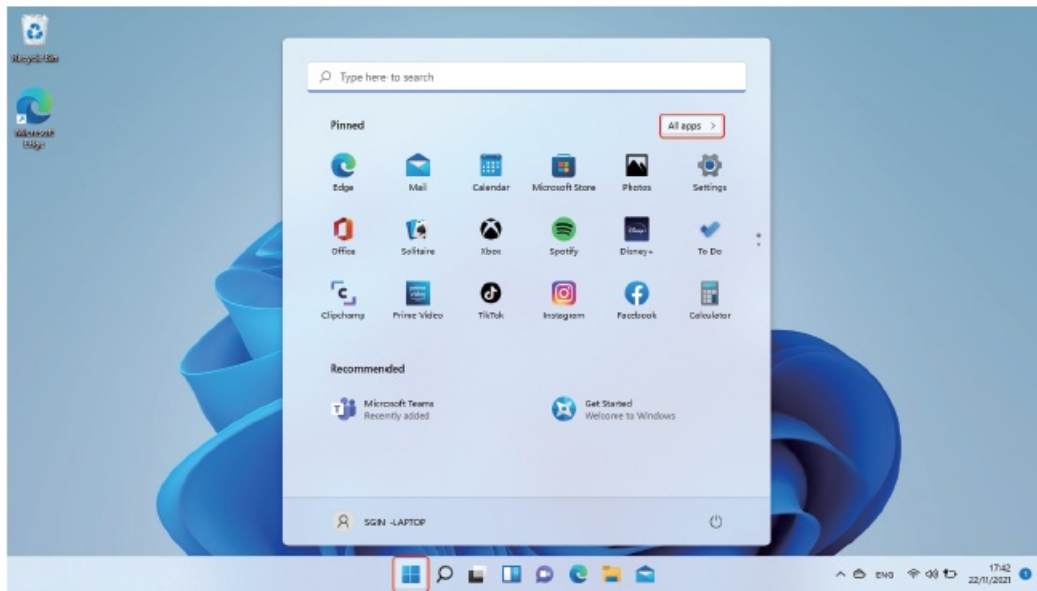


## Wi-fi, Bluetooth, Flight mode

Touch to Open Setting Tablet to set up Airplane mode/ WI-FI/ & Bluetooth, and this device can connect to 2.4G and SG Wifi.



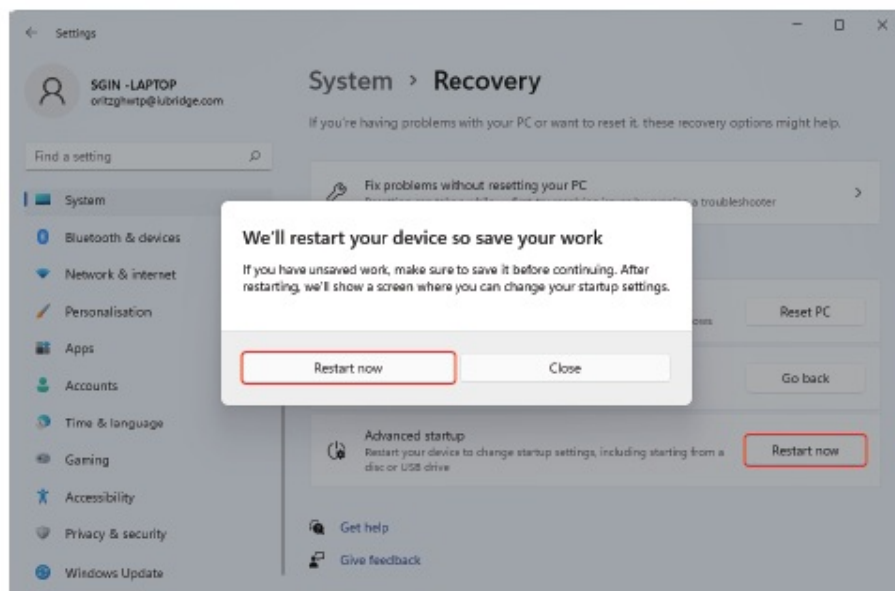
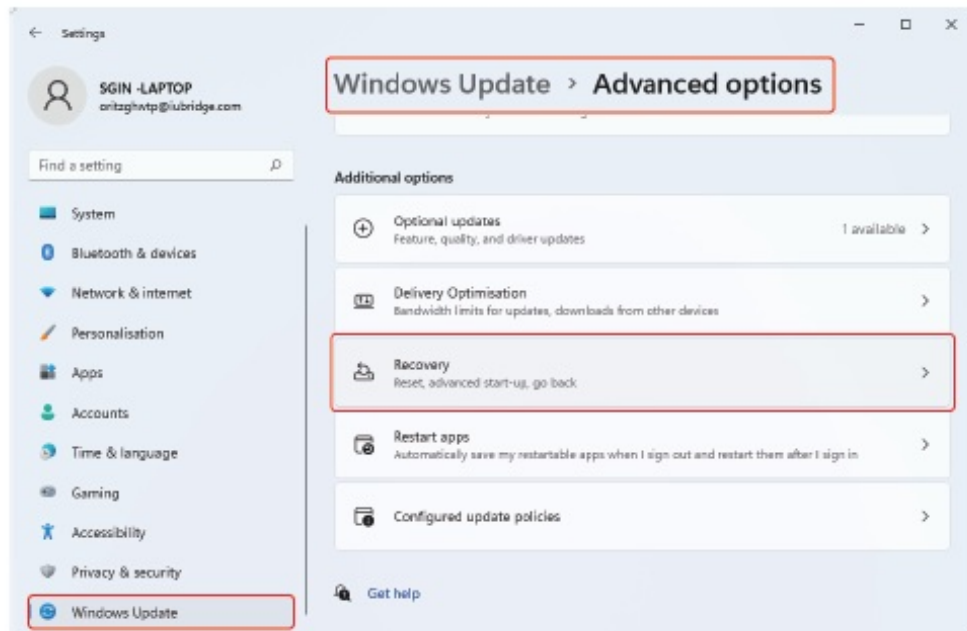
cortana



You can use Cortana ( voice control) to set reminders, write emails, search, and chat with friends and family on messengers.

## System reset

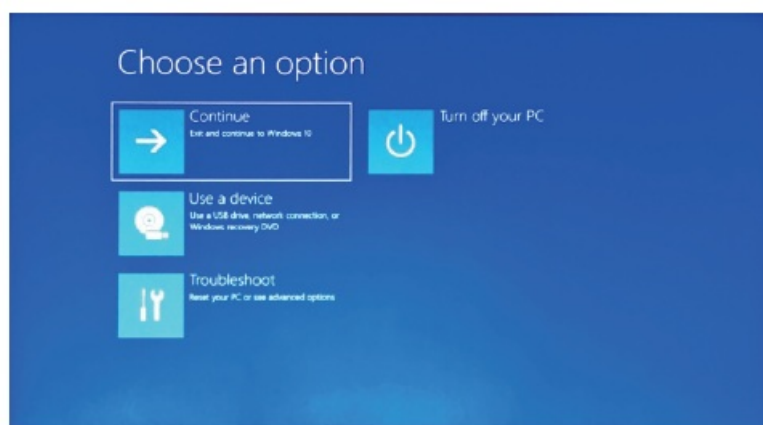
**Notice:** The Reset progress will take around 3-5 hours, in order to finish the Reset successfully, please connect the adapter to charge the device during the whole Reset progress.



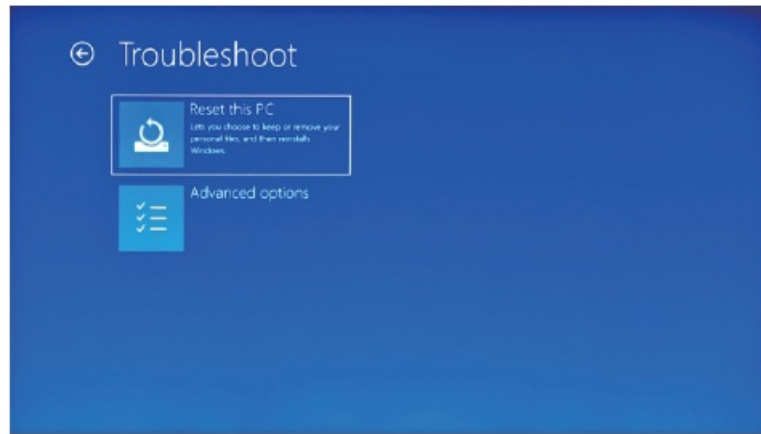
Click the left mouse button on the



button in the lower-left corner of the desktop. Select "Advanced options" → select "Windows Update" → select "Advanced options", select "Recovery" → select "Advanced startup" → find "Restart now" and click the left mouse button → select the "Restart now" button in the pop-up window;



Press Troubleshoot, below content will show up.



Press "Reset this PC" to fix the software error.

## BIOS-Setting & Bootmanager

Press and hold the "ESC" button of the keyboard immediately after switching on the device by pressing power button. Then different options will appear. Choose option "SCU" for BIOS setting and "Boot Manager" for operating system boot option.

## Battery charging

Connect power adapter to the power port of the device. Connect the power adapter plug into a power outlet for charging the battery. Please only use the provided original power adapter. During charging, the icon of the battery will be



and when charging completes, the icon will be



You can still use the device while charging, but this will extend the charging time. Use the device at least once a week. Fully charge the battery regularly. Do not leave the battery empty for a long time.

## Troubleshooting

### 1. Can not turn on the device

Press the power button for 5 seconds to turn on the device. If the above method doesn't work, please charge it for 30 minutes before starting.

### 2. No sound from the earphone

Check if the volume is set to "O". Test if the earphone is broken, if so, please change for another earphone.

### 3. Big noise

Check if there is dust in the earphone or speaker. Check if the sound file is broken.

### 4. screen drift or unresponsive screen

Switch off the device by a long press (approx. 30 sec.) of the power button. (Do not use this way to switch off the device unless it is necessary)

### 5. Windows key cannot active immediately

First, make sure the Wi-Fi is connected and the Wi-Fi network is a working network. Second, make sure the time zone and system time is correct in your location. (Windows key active delay may happen sometimes)

because of the network speed or other reasons if you make sure the above two points are correct and the key still cannot active. Kindly contact with our service team please. We will support you immediately)

**6. How to enter desktop interface when first time starting up.**

Follow the Microsoft Windows 7 0 starting up guide step by step to enter the desktop interface.

**7. Why my device has already been registered by account name of “default user 0”**

This is a common software error may happen in Windows 70 when user starting up the device First, press the power button for 5-8 seconds to shut down the device. Do this 3 times, and then power on the device, below content will show up.

**8. Why when I press the keyboard character, in the system it shows another one?**

This may happen because you choose the wrong language when you first time turn on the device. Below is the method to correct the language and input Choose windows home button at the left bottom side of the desktop.

**9. Windows automatic update may cause some issues recently, below is the method of how to open or close the automatic update function. Click mouse right**

button(Laptop) on the windows home button at the left bottom side of the desktop. Choose ‘Task Manager’ choose “More details, choose “Services”→ choose “Open Serv ices”→find “Windows Update” click mouse right button (Laptop) on it→ choose “Properties”→ find Startup type and choose the option you want. There are 4 options. Automatic (Delay Start)/ Automatic/Manual/Disabled.

## **FCC Statement**

Changes or modifications not expressly approved by the party responsible for compliance could void the user’s authority to operate the equipment. This equipment has been tested and found to comply with the limits for a Class B digital device, pursuant to Part 15 of the FCC Rules. These limits are designed to provide reasonable protection against harmful interference in a residential installation. This equipment generates uses and can radiate radio frequency energy and, if not installed and used in accordance with the instructions, may cause harmful interference to radio communications. However, there is no guarantee that interference will not occur in a particular installation. If this equipment does cause harmful interference to radio or television reception, which can be determined by turning the equipment off and on, the user is encouraged to try to correct the interference by one or more of the following measures:

- Reorient or relocate the receiving antenna.
- Increase the separation between the equipment and receiver.
- Connect the equipment into an outlet on a circuit different from that to which the receiver is connected.
- Consult the dealer or an experienced radio/TV technician for help This device complies with part 15 of the FCC rules.

Operation is subject to the following two conditions

1. this device may not cause harmful interference, and
2. this device must accept any interference received, including interference that may cause undesired operation.

This equipment complies with FCC radiation exposure limits set forth for an uncontrolled environment.

## **CE Statement**

Herby, Shenzhen NST Industry and Trade Co.,Ltd. declares that this 14.1inch laptop SGIN\_X14 is in compliance with the essential requirements and other relevant provisions of Directive 2014/53/EU. In accordance with Article 10(2) and Article 10(10), this product allowed to be used in all EU member states. Use the 14.1inch laptop in an


environment with a temperature between -0°C and 40°C Use careful with the earphone maybe possible excessive sound pressure from earphones and headphones can cause hearing loss. Risk of explosion if battery is replaced by an incorrect type. Dispose of used batteries according to the instructions. The product shall only be connected to a USB interface of version USB2.0 Adapter shall be installed near the equipment and shall be easily accessible.

- **The plug considered as disconnect device of adapter Adapter Model:** JZB024-120250X
- **Input:** AC 100-240V 50/60Hz 0.7A Output: DC 12V, 2.5A 30W
- **Operation Frequency:** BT/BLE:2402MHz~2480MHz 2.4G Wifi: 2412MHz~2472MHz (802.11b/802.11g/802.11n(HT20)) 2422MHz~2462MHz (802.11n(HT40))
- **5G Wifi: Band 1:** 5180 MHz -5240 MHz Band 3: 5745 MHz -5825 MHz
- **Max Output Power:** BT:0.001W BLE:0.001W 2.4G WIFI:0.008W 5.1GWIFI:0.006W 5.8G WIFI:0.005W
- Manufacturer Shenzhen NST Industry and Trade Co.,Ltd.
- **Address** 3/F, Bldg 1, Hongbang Technology Park, No.30 Cuibao Road, Baolong Street, Longgang District, Shenzhen, China
- **E-mail:** [kellynst@nst-it.com](mailto:kellynst@nst-it.com)

**Import Information:**

Company name: Booyue International Trading GmbH Address: Wolfenbütteler Str.45 Magdeburg Germany

**Documents / Resources**

	<p><a href="#">L Forward Use WiFi To Connect To The Internet</a> [pdf] Instructions SGINX14, 2A3YZ-SGINX14, 2A3YZSGINX14, Use WiFi To Connect To The Internet, Use WiFi To Connect To The Internet</p>
---	--