



# Kzzi K75 Mechanical Keyboard User Manual

[Home](#) » [Kzzi](#) » Kzzi K75 Mechanical Keyboard User Manual 

## Contents

- 1 Kzzi K75 Mechanical Keyboard
- 2 Product Information
- 3 Product Usage Instructions
- 4 BASIC INFORMATION
- 5 INDICATOR LIGHT
- 6 WIRED MODE
- 7 2.4GHZ MODE
- 8 BT MODE
- 9 THE SECOND COMBINATION OF FUNCTION KEYS
- 10 BACKLIGHT CONTROL
- 11 CUSTOMIZED BACKLIGHT
- 12 MULTIMEDIA KEY FOR WINDOWS
- 13 MULTIMEDIA KEY FOR MAC
- 14 FCC Statement
- 15 Documents / Resources
- 16 Related Posts



**Kzzi K75 Mechanical Keyboard**



## Product Information

The FCC Statement is a regulatory requirement for electronic products sold in the United States. It indicates that the product has been tested and complies with FCC regulations for electromagnetic interference.

## Product Usage Instructions

- The FCC Statement is included in the product manual as a reference for users. It does not provide any specific instructions for using the product. To use the product, please refer to the detailed instructions provided in the user manual.
- Ensure that you have read and understood all safety precautions and operational requirements before using the product. Failure to do so may result in damage to the product or injury to the user.
- If you have any questions or concerns about using the product, please refer to the troubleshooting section of the user manual or contact our customer support team for assistance.

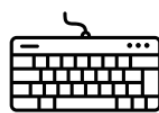
## BASIC INFORMATION



Manual



Switch Puller



Keyboard



Type-C Cable



Receiver

- **Size:** 335.8(L)x155.5(W)x41.5(H)±2
- **Layout:** 82keys
- **Backlight:** RGB
- **Switch:** Mechanical switch
- **Edition:** USB/2.4G/BT

## INDICATOR LIGHT

## 100% IN WIRELESS MODE BATTERY LEVEL

En modo inalámbrico: Nivel de batería  
En mode sans fil: Niveau de batterie

○ Caps Lock  
A Caps Lock  
Bloq Mayús

○ Win Lock  
🔒 Win Lock  
Bloq Win

○ Scrk Lock  
↓ Scrk Lock  
Bloq Mayús

○ Low-voltage Indication  
⚡ Indicateur Tension Faible  
Indicación de baja tensión

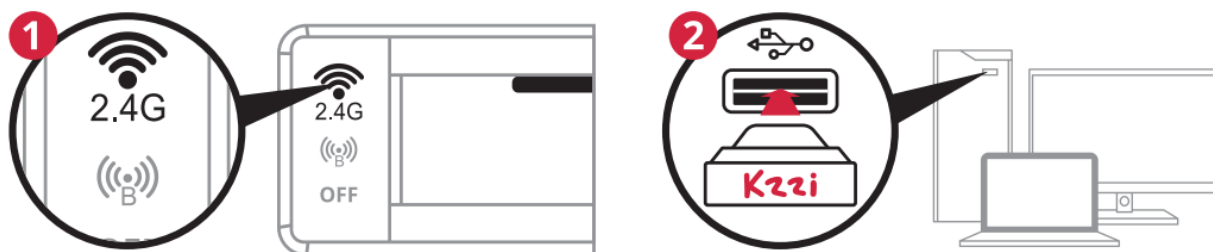
## WIRED MODE

1. Toggle switch to OFF for Wired Mode.
2. Fully charge keyboard before first use.



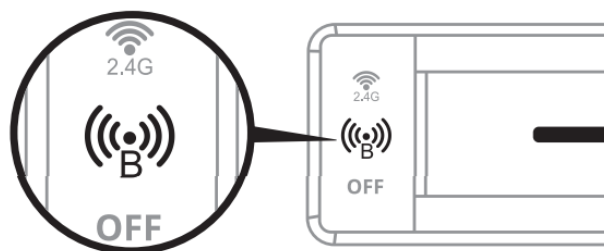
## 2.4GHZ MODE

Turn the toggle switch to the 2.4G position

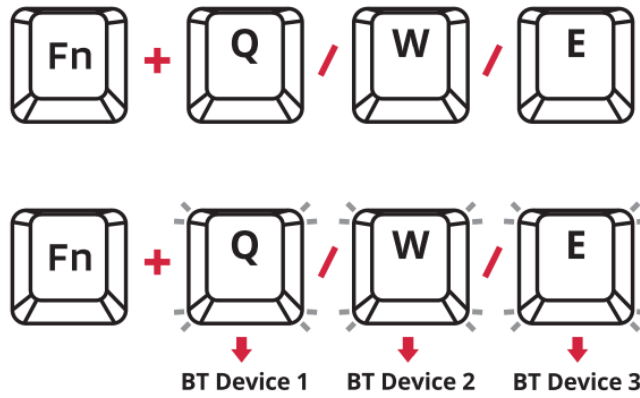


## BT MODE

- Toggle switch to BT for BT Mode.



- Short press Fn+Q/W/E to change BT channel.
- Long press Fn+Q/W/E entry pairing mode.



## THE SECOND COMBINATION OF FUNCTION KEYS



**Switch to windows system**  
 Basculer en mode système windows  
 Cambiar a Windows



**Switch to mac system**  
 Basculer en mode système mac  
 Cambiar a sistema mac



**Pause**  
 Pause  
 Pausa



**Last song**  
 Musique Précédente  
 Canción anterior



**Play / pause**  
 Lecture / Pause  
 Reproducir/pausar



**Next song**  
 Musique Suivante  
 Canción siguiente



**Mute**  
 SourGINE  
 Silenciar



**Volume-**  
 Diminuer le Volume  
 Volumen-



**Volume+**  
 Augmenter le Volume  
 Volumen+



**Insert**  
 Insérer  
 Insertar



**ScrLK**  
 ScrLK  
 ScrLK



**PrtSc**  
 PrtSc (Impression D'écran)  
 PrtSc

## BACKLIGHT CONTROL



### Switch Backlight Mode

Changement du mode de rétro-éclairage  
Cambiar el modo de retroiluminación



### Switch the backlight color

Changer la couleur du rétroéclairage  
Cambiar el color de la retroiluminación



### Backlight Brightness+

Augmentation de la Luminosité du rétroéclairage+  
Brillo de la retroiluminación+



### Backlight Speed+

Augmentation de la Vitesse du rétroéclairage+  
Velocidad de retroiluminación+



### Backlight Brightness-

Diminution de la Luminosité du rétroéclairage-  
Brillo de la retroiluminación-



### Backlight Speed-

Diminution de la Vitesse du rétroéclairage-  
Velocidad de retroiluminación-



### Window Lock

Verrouillage Win  
Bloquear tecla WIN



### Restore to factory settings

Rétablir les paramètres d'usine  
Restaurar valores de fábrica

## CUSTOMIZED BACKLIGHT

### Non-customizable

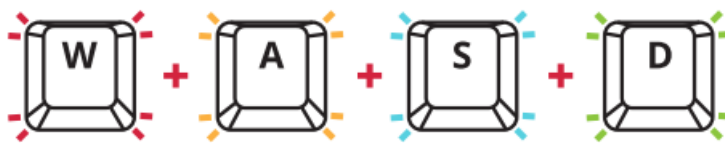


### Non-customizable

Non personnalisable  
No personalizable



e.g.



Repeat key presses can change backlit colors



## MULTIMEDIA KEY FOR WINDOWS



### Computer

Ordinateur  
Ordenador



### Browser

Navigateur  
Navegador



### Mailbox

E-Mail  
Buzón



### Calculator

Calculatrice  
Calculadora



### Player

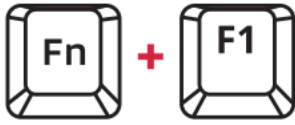
Lecture  
Reproductor



### Stop

Arrêt  
Detener

## MULTIMEDIA KEY FOR MAC



#### **Screen Brightness-**

Diminution de la Luminosité de l'écran-  
Brillo de la pantalla-



#### **Screen Brightness+**

Augmentation de La Luminosité de l'écran+  
Brillo de la pantalla+



#### **Keyboard Backlight Brightness-**

Diminution de la Luminosité du rétroéclairage  
du clavier -  
Brillo de la retroiluminación del teclado -



#### **Keyboard Backlight Brightness+**

Augmentation de la Luminosité du  
Rétroéclairage du clavier +  
Brillo de la retroiluminación del teclado +

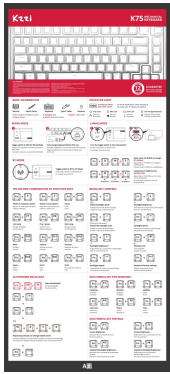
## **FCC Statement**

- This equipment has been tested and found to comply with the limits for a Class B digital device, pursuant to part 15 of the FCC Rules. These limits are designed to provide reasonable protection against harmful interference in a residential installation. This equipment generates, uses and can radiate radio frequency energy and, if not installed and used in accordance with the instructions, may cause harmful interference to radio communications. However, there is no guarantee that interference will not occur in a particular installation. If this equipment does cause harmful interference to radio or television reception, which can be determined by turning the equipment off and on, the user is encouraged to try to correct the interference by one or more of the following measures:
  - Reorient or relocate the receiving antenna.
  - Increase the separation between the equipment and receiver.
  - Connect the equipment into an outlet on a circuit different from that to which the receiver is connected.
  - Consult the dealer or an experienced radio/TV technician for help.
- Caution: Any changes or modifications to this device not explicitly approved by manufacturer could void your authority to operate this equipment.
- This device complies with part 15 of the FCC Rules. Operation is subject to the following two conditions:
  1. This device may not cause harmful interference,
  2. this device must accept any interference received, including interference that may cause undesired operation.

## **RF Exposure Information**

The device has been evaluated to meet general RF exposure requirement. The device can be used in portable exposure condition without restriction.

## **Documents / Resources**



[Kzzi K75 Mechanical Keyboard](#) [pdf] User Manual  
2BBA6-K75PRO, 2BBA6K75PRO, K75, K75 Mechanical Keyboard, Mechanical Keyboard, Key  
board