



KYORITSU 5001 Series PC Software for Logger Instruction Manual

[Home](#) » [KYORITSU](#) » KYORITSU 5001 Series PC Software for Logger Instruction Manual 

Contents

- 1 KYORITSU 5001 Series PC Software for Logger
- 2 Product Information
- 3 Product Usage Instructions
- 4 Introduction
- 5 Installing “KEW LOG soft 2”
- 6 Installing USB driver
- 7 Starting “KEW LOG Soft2”
- 8 Features of “KEW LOG Soft 2”
- 9 Troubleshooting
- 10 Documents / Resources
 - 10.1 References



KYORITSU

KYORITSU 5001 Series PC Software for Logger



Product Information

Product Name: KEW LOG Soft 2

Manufacturer: KYORITSU ELECTRICAL INSTRUMENTS WORKS, LTD.

Product Usage Instructions

To install KEW LOG Soft 2, follow these steps:

1. Insert the CD and open the installer.
2. Follow the on-screen instructions to install the software.
3. Once the installation is complete, the KEW LOG Soft 2 will be ready to use.

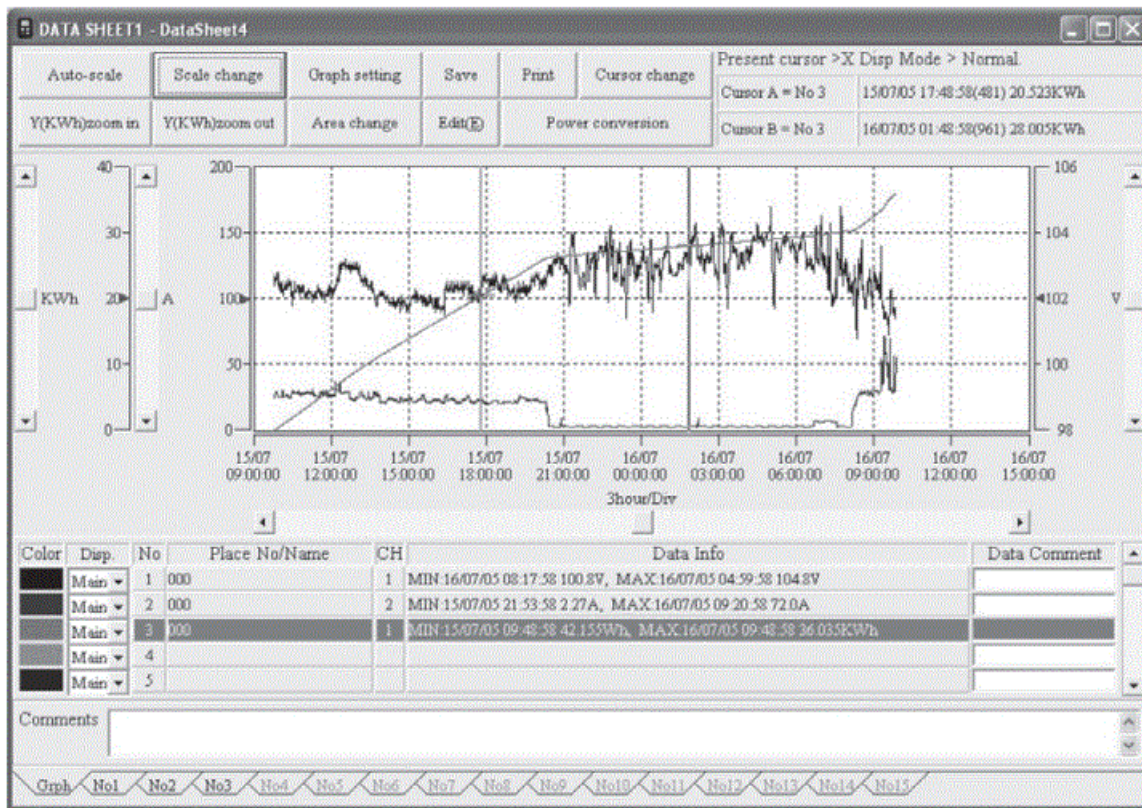
To uninstall the PC software, follow these steps:

1. Go to the Control Panel on your PC.
2. Click on "Programs" or "Programs and Features".
3. Find KEW LOG Soft 2 in the list of installed programs.
4. Select KEW LOG Soft 2 and click on "Uninstall".
5. Follow the on-screen instructions to complete the uninstallation process.

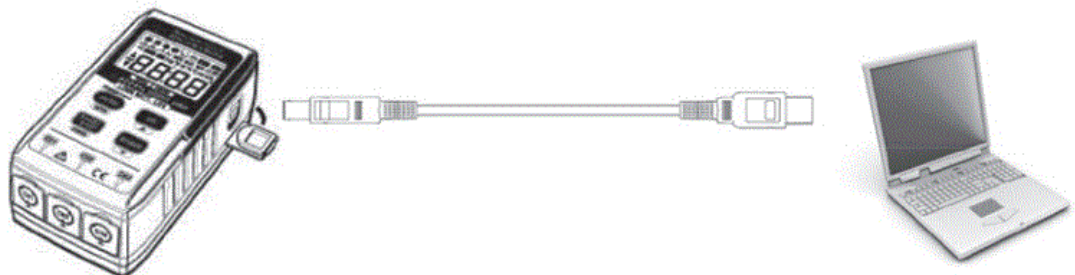
To install the USB driver, follow these steps:

1. Connect the KEW LOG device to your PC using a USB cable.
2. The PC will automatically detect the device and attempt to install the driver.

3. If the driver installation is interrupted, right-click on the CD drive and click "Open".
4. Locate the "DRIVER" folder in the displayed window.
5. Run "KewLoggerUsbDriver100_setup.exe" from the "DRIVER" folder to restart the installer.
6. Follow the on-screen instructions to complete the driver installation.



KEW5020



The manual contains instructions on how to install the software "KEW LOG soft 2" supplied with MODEL5001 and KEW5010/ 5020.

Introduction

Interface

Our Loggers are equipped with a USB interface.
Communication USB 2.0 This is an application software for Windows PC.

The following can done by using this software.

- Data communication with our Loggers (5001 and 5010/5020)
- Downloading the data files to PC for editing, analysis, and print.
- The downloaded data can be saved on a PC. Adjusting settings of our Loggers.

System Requirements

- OS(Operation System)

For supported OS, please check the version label of the CD case or visit our website.

- Display 1024 x 768 dots, 65536 colors or more
- HDD (Hard-disk space required) 1 Gbyte or more

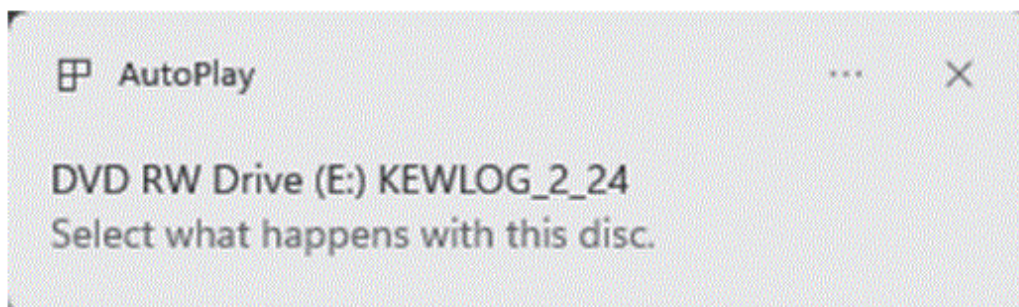
Trademark

- Windows® is a registered trademark of Microsoft in the United States.

The latest software is available for download from our homepage. <http://www.kew-ltd.co.jp>

Installing “KEW LOG soft 2”

1. The following should be checked before installing this software.
 - To prepare your system for installation, please close all open programs.
 - Be sure NOT to connect the instrument to the USB until installation is completed.
 - Installation shall be done with Administrator rights.
2. Insert the CD-ROM into your PC's CD-ROM drive. Left-click on the following message when it appears at on the screen.



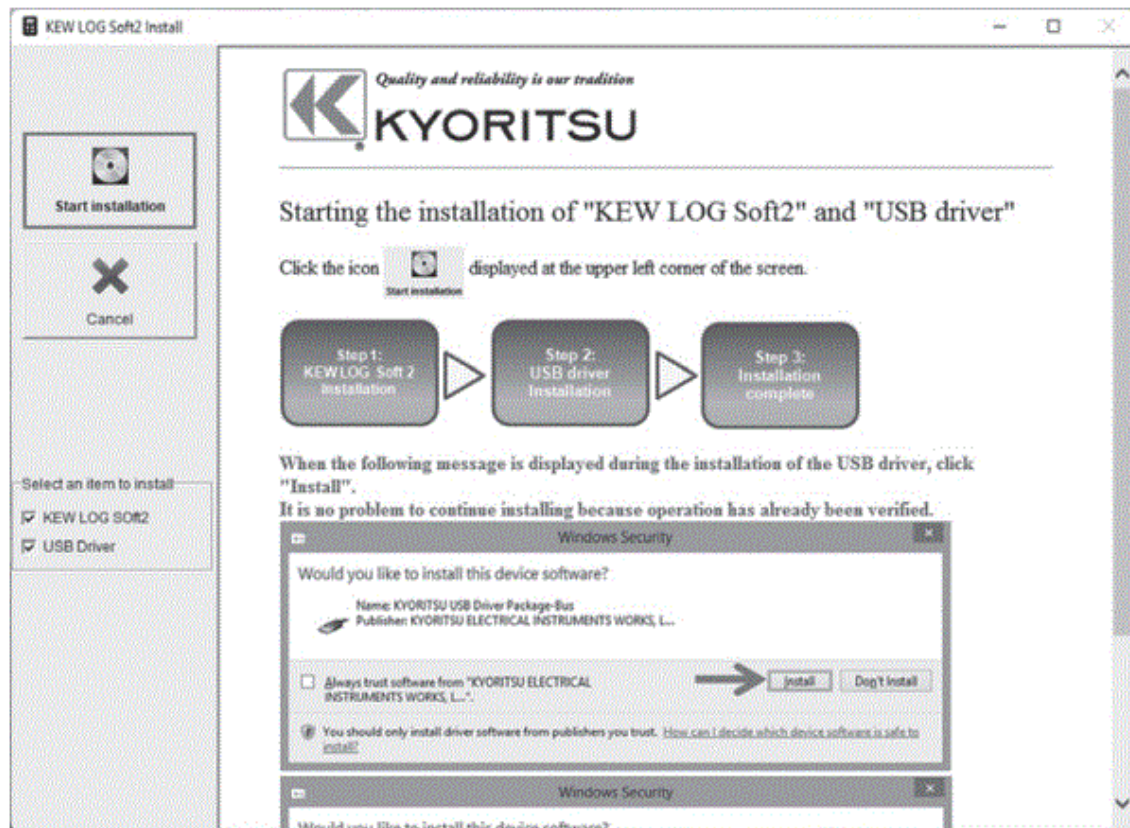
The following pop-up will appear. Click “Run SetupLauncher.exe”. If the User Account Control dialog box appears, click “Yes”



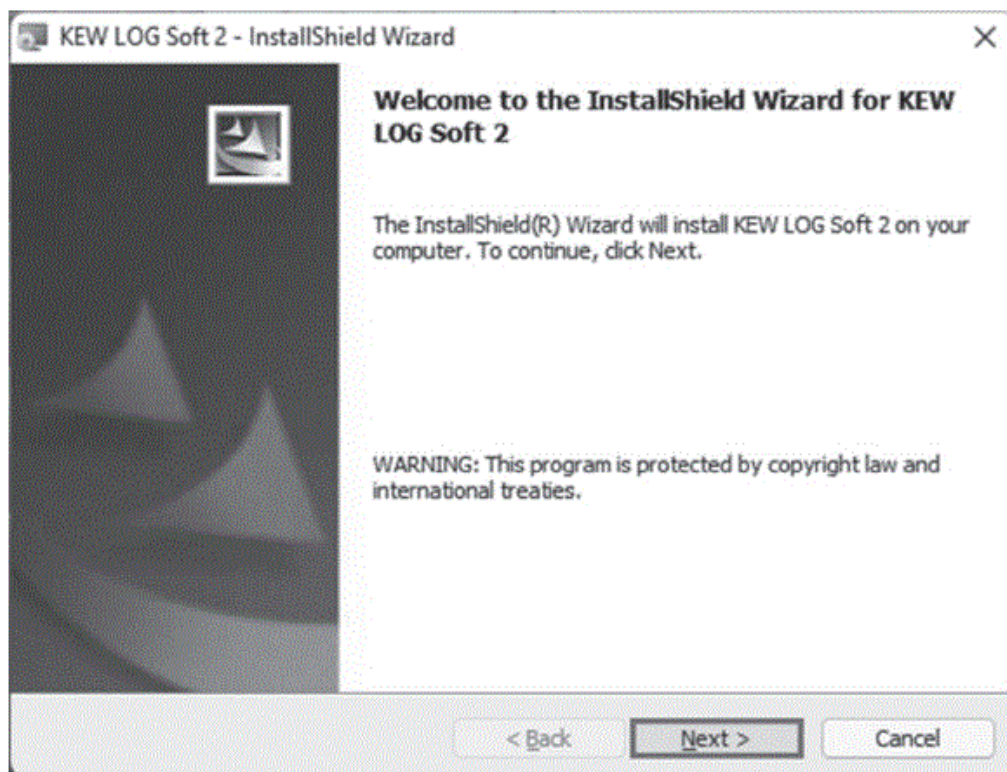
If above pop-up does not appear, open “Explore” or “Computer” and run the “Run SetupLauncher.exe” in the CD icon.

3. The following window appears after clicking “Run SetupLauncher.exe”. Click the “Start installation” icon

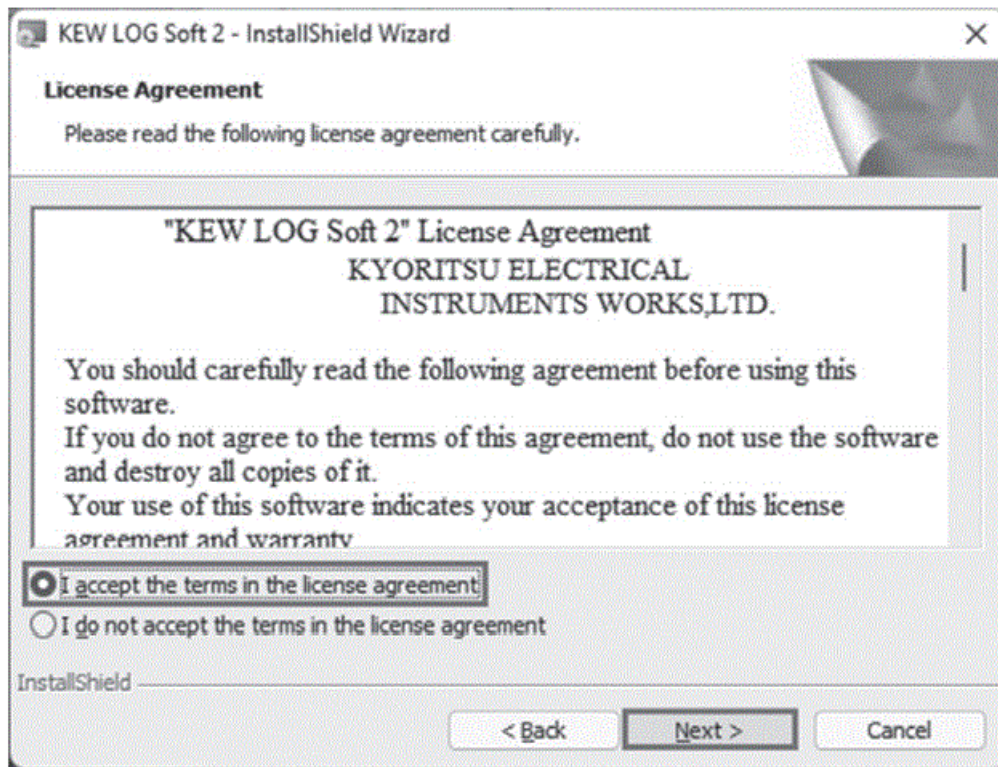
displayed at the upper left of the window.



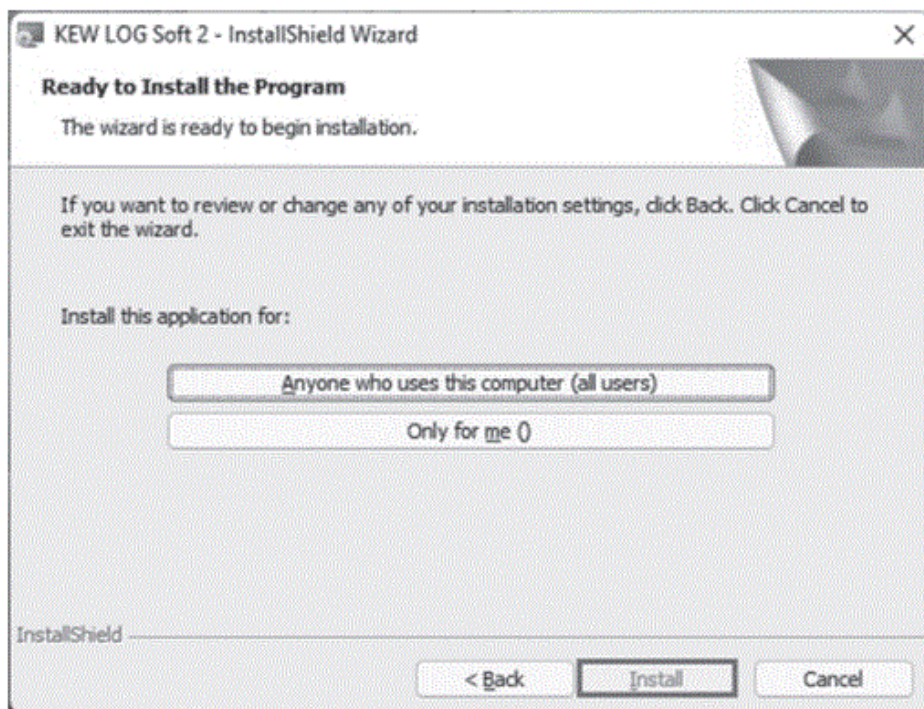
4. The following window will appear when the installation of “KEW LOG Soft 2” starts. Click “Next”



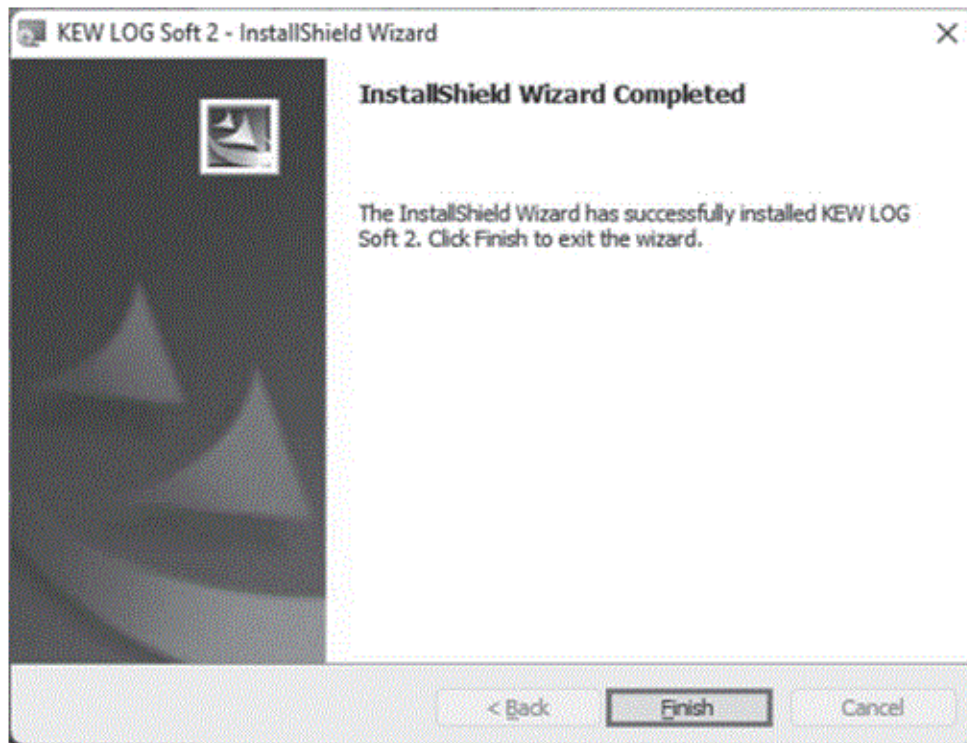
5. Read through and understand the License Agreement and click “ I accept•• . ”, and then click “ Next”



6. Click "Next" after entering the user information and other supplementary information.
7. Confirm the folder where the software will be installed in, and click "Next"
8. Confirm the information on installation, and then click "Install" to start installation.



9. Click "Finish" when "InstallShield Wizard Complete" dialog appears.



When the above installation wizard is completed, your PC will be ready for the subsequent installation. Please refer to Chap. 3 "Installing USB driver" and install the USB driver.

How to uninstall the PC Software:

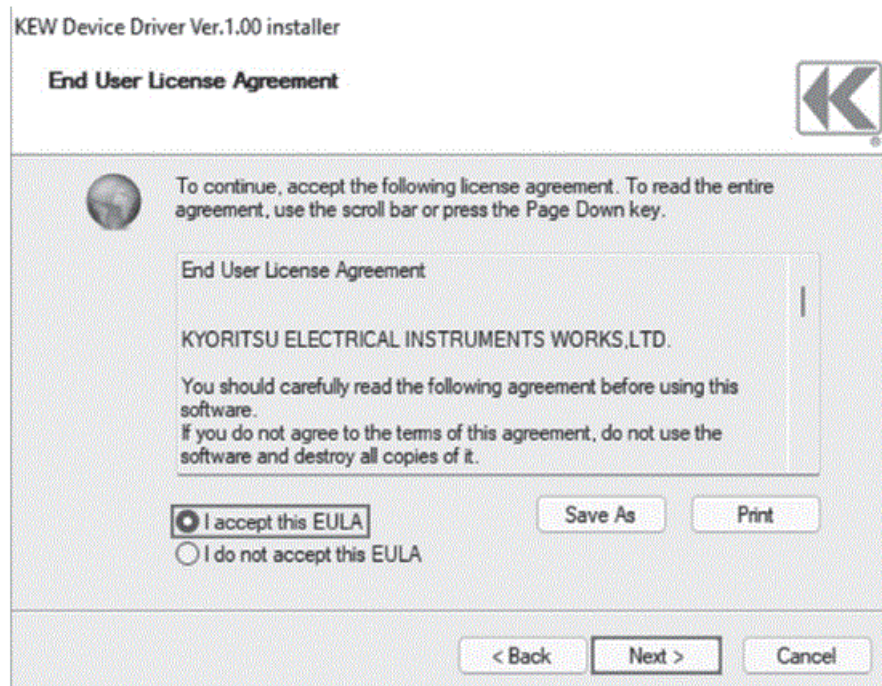
Access to the "Control Panel" and double click on "Programs and Features" and remove the "KEW LOG Soft 2"

Installing USB driver

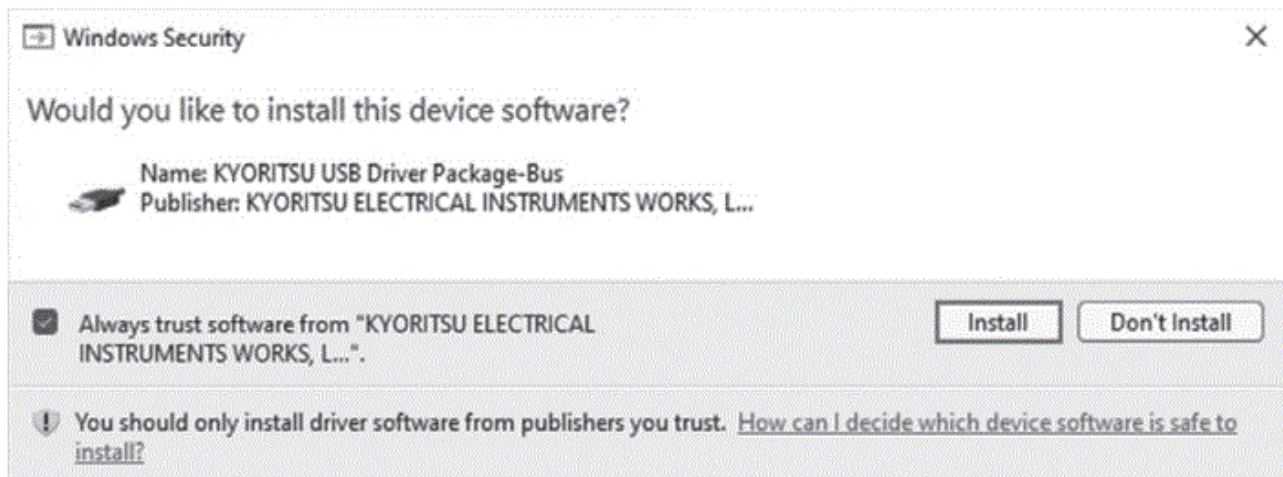
1. When the installation of KEW LOG Soft 2 is completed, the following message will appear and the installation of the USB driver initiates. Click "Next"



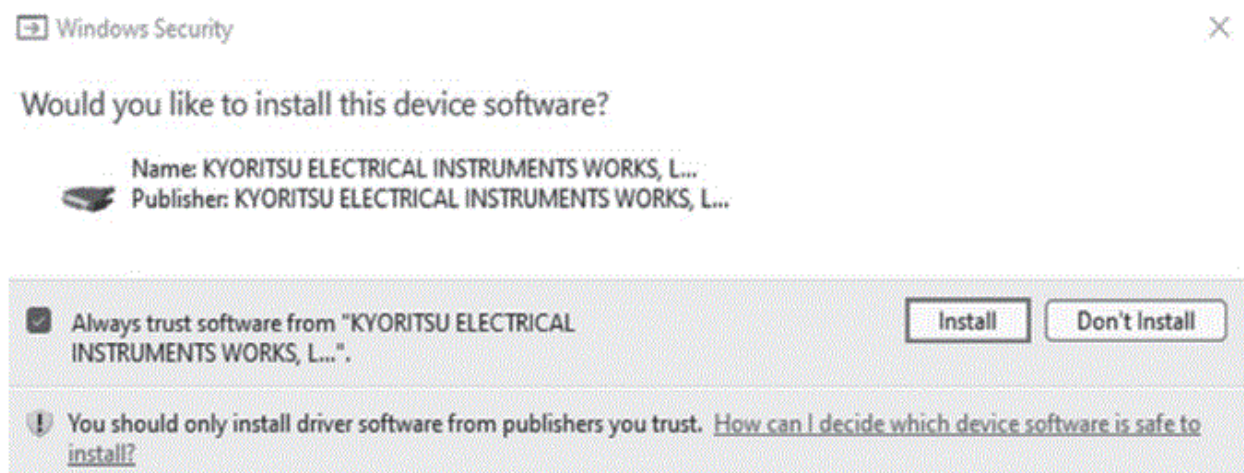
2. Read through and understand the End User License Agreement and click "I accept...", and then click "Next".



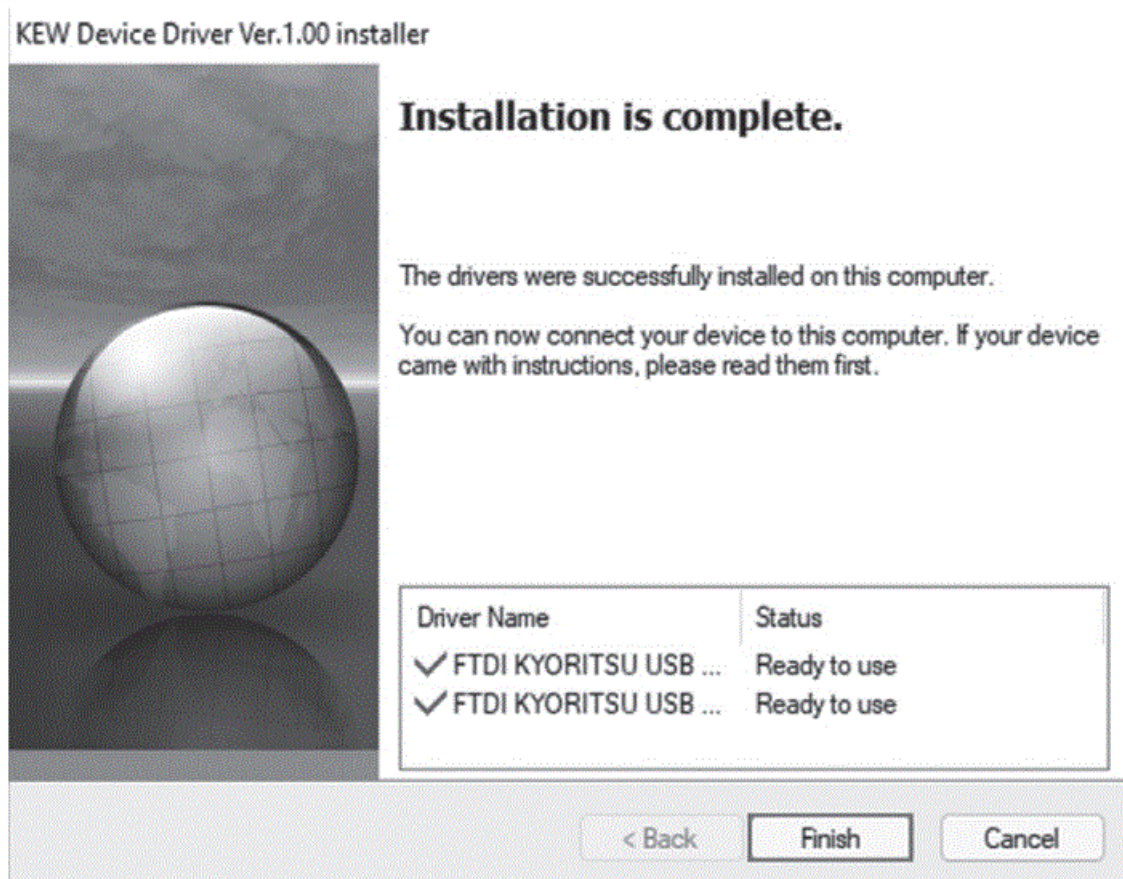
3. If the following warning window appears, click "Install"



4. If another warning window as shown below appears, click "Install" again.



5. Installation is completed when the wizard finishes. Click "Finish"



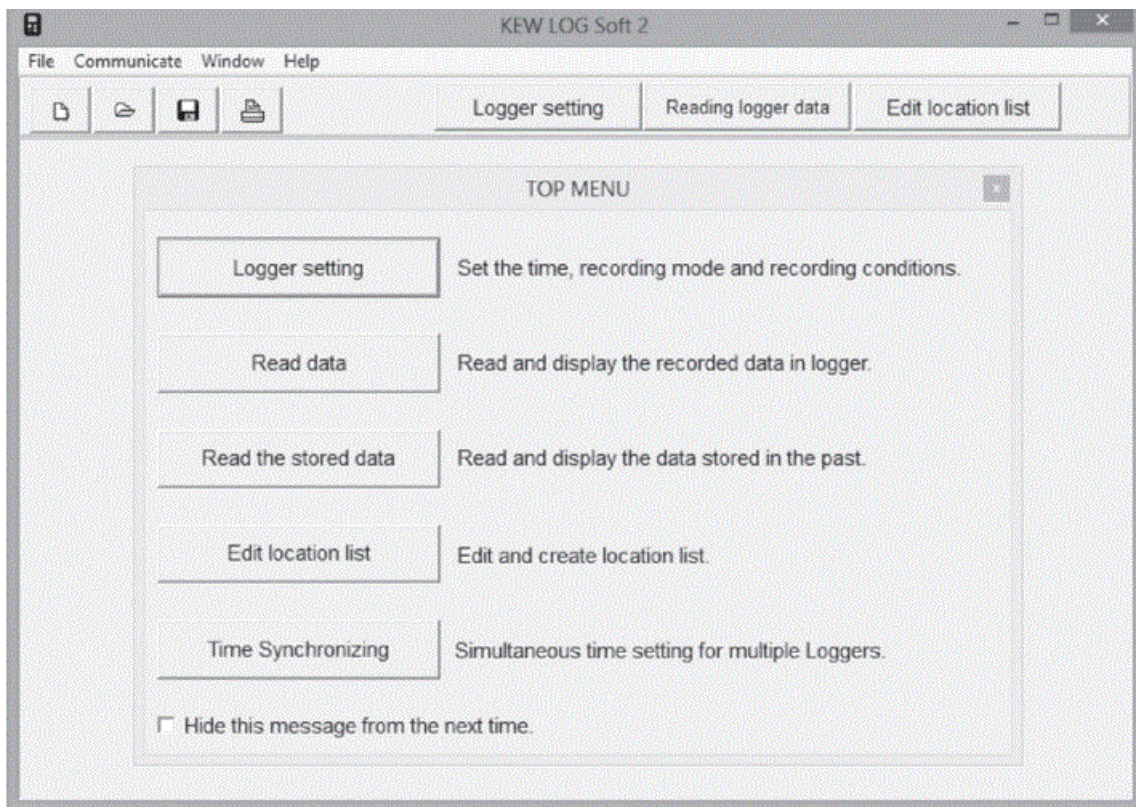
Now the USB driver installation is completed. Connect the Logger and the PC for data communication.

If the installer was interrupted before the driver could be installed, right-click on the CD drive and click "Open" . Find the "DRIVER" folder on the displayed window, and run "KewLoggerUsbDriver100_setup.exe" to restart the installer.

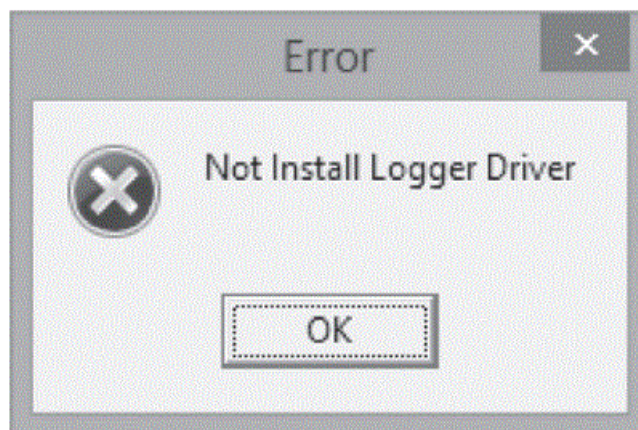
Starting "KEW LOG Soft2"

Double-click the "KEW LOG Soft 2 " icon on your desktop, or click "Start" -> "Program" -> "KEW" -> "KEW LOG soft 2"

The main window for "KEW LOG Soft 2" with top menu will appear. Select a desirable menu and download the recorded data from Logger or adjust settings.



* The following error message may appear after the installation of the USB driver is completed when starting “KEW LOG Soft 2” before connecting Loggers.



Features of “KEW LOG Soft 2”

Features of “KEW LOG Soft 2” are as follows.

- **Logger setting** Set the time and recording conditions for Logger.
- **Data read** Read the data from Logger and display it in graphic and list forms.
- **Edit, print, and save logger data** Can abstract a part of data from the list of logger data, and can copy graph image and save data in text format (.csv).
- **Edit the location list** Edit the location name corresponding to its location No.
- **Sync time setting** Adjust the clocks of multiple Loggers simultaneously.

For further details, please refer to “KEW LOG Soft 2 – Help”

- Click the “KEW LOG Soft 2-Help” icon on the desktop.

- Click “Help” on the “KEW LOG Soft 2” window, and then click “KEW LOG soft – Help”

Troubleshooting

If you are having problems or questions, please visit our website and click the “Supgx)rt” tab, and then click “General & Technical FAQ” —+ “Loggers”
For the latest news and information, visit our website. <http://www.kew-ltd.co.jp>
2-5-20, Nakane, Meguro-ku, Tokyo, 152-0031 Japan Phone: +81-3-3723-0131 Fax: +81-3-3723-0152 Factory: Ehime, Japan
www.kew-ltd.co.jp

Documents / Resources

	<p>KYORITSU 5001 Series PC Software for Logger [pdf] Instruction Manual 5001 Series PC Software for Logger, 5001 Series, PC Software for Logger, Software for Logger, Logger</p>
--	--

References

-  [_____](#)