



KYOCERA PA2000w MAC WPS Setup User Guide

[Home](#) » [Kyocera](#) » KYOCERA PA2000w MAC WPS Setup User Guide 



Wireless Setup (Using WPS) PA2000w Wireless Setup (MAC) User Guide

Contents


- [1 PA2000w MAC WPS Setup](#)
- [2 Support](#)
- [3 Documents / Resources](#)
 - [3.1 References](#)
- [4 Related Posts](#)

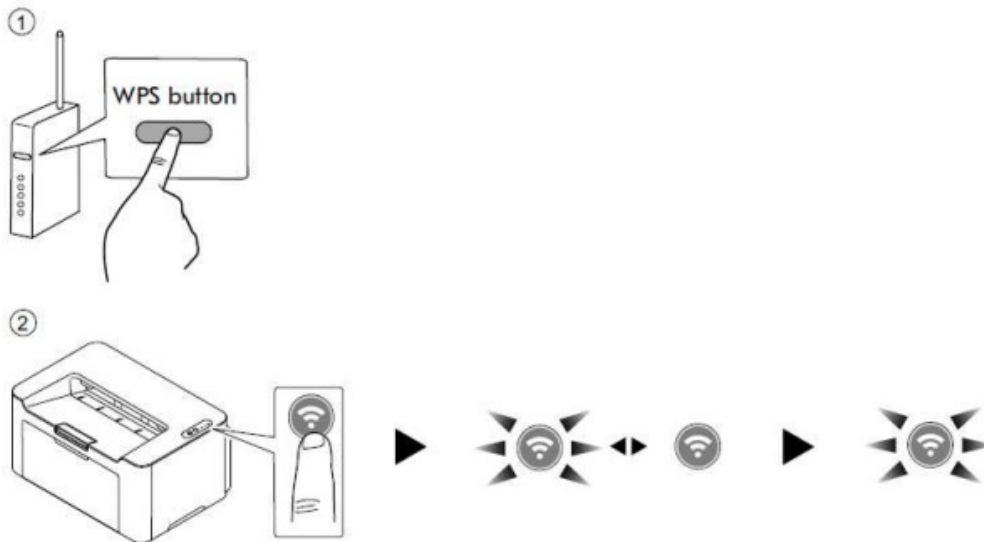
PA2000w MAC WPS Setup


Before setting up printer you first must, download the Mac Driver from Kyocera.info and run the installer. This will install all software required.

Step 1

If your router supports WPS, you can configure network connection using the WPS push button on your router. Check your router manual to WPS support.

1. Turn on the computer.
2. Press Wireless Network  on the operation panel of the machine. The wireless network indicator flashes.
3. Press the WPS button on the router.

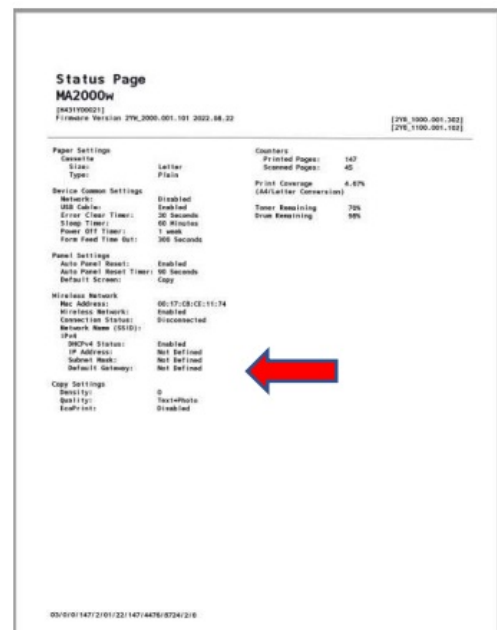
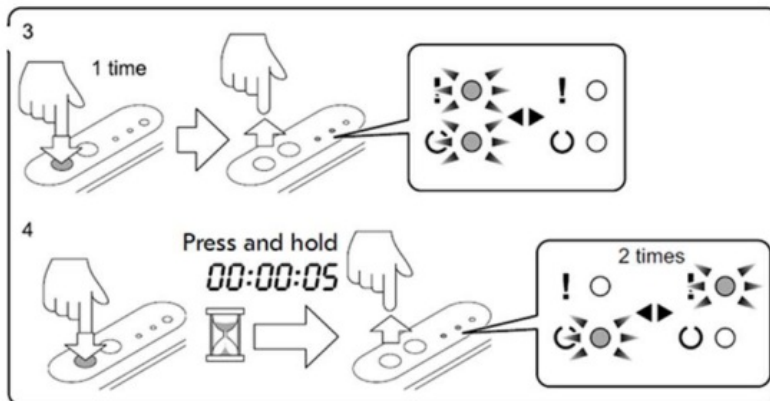


4. The network between this machine and the router is being configured. If the network connection between this machine and the router completes, Wireless Network  will light up.

5. Print a Status page.

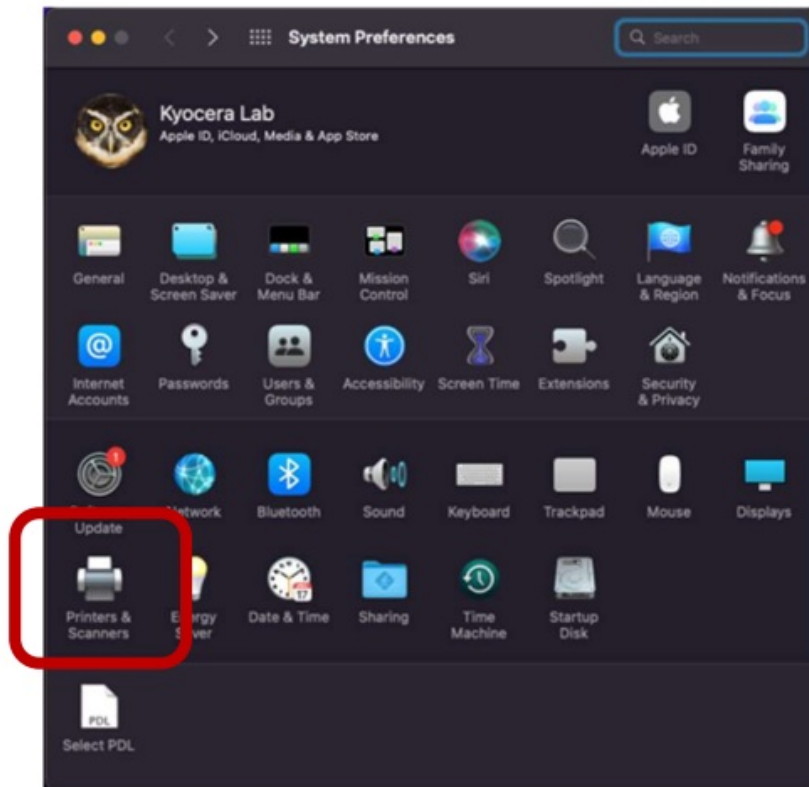
Press and hold the Main Power button for 5 seconds, this will print the status page.

The attention light will start flashing and status page will be printed.

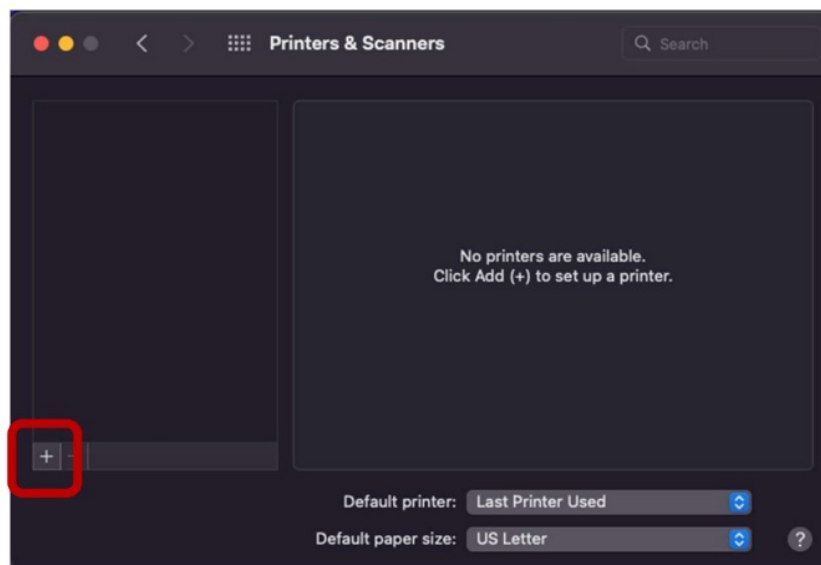


Step 2

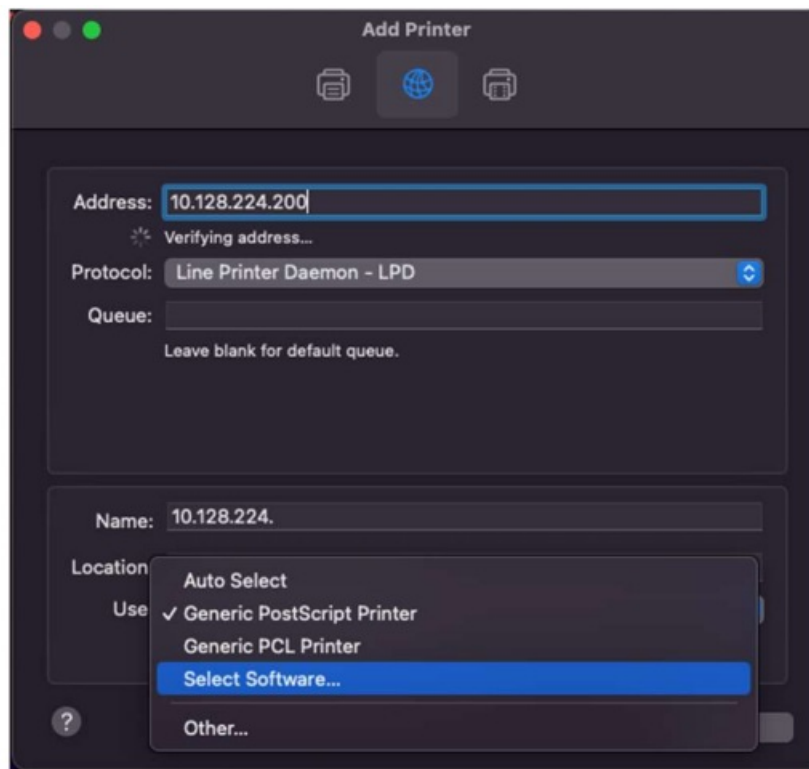
1. Select the Apple icon and then System Preferences
2. Select Printers and scanners



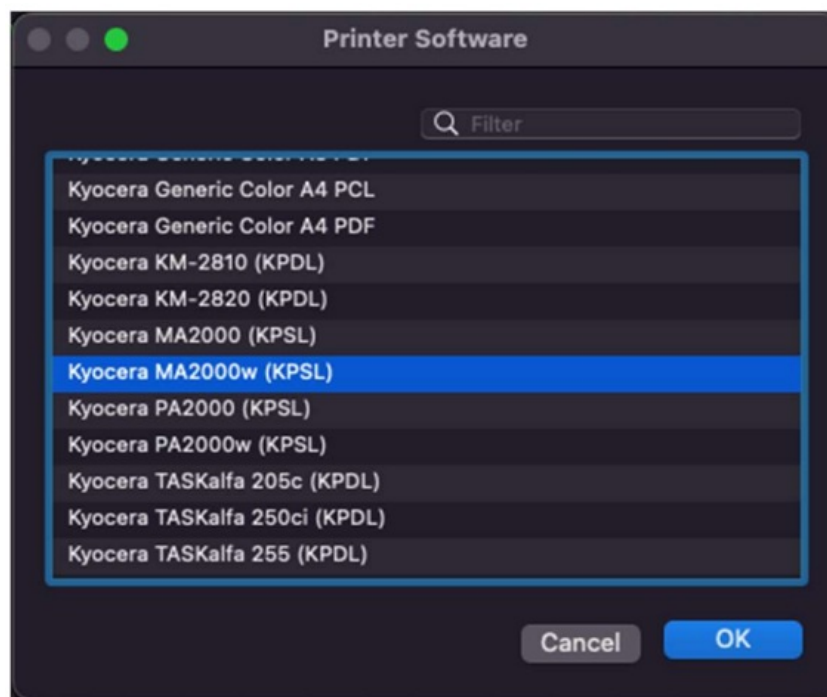
3. Select the “+” to add a new printer.



4. Select the center tab (IP) enter the IP address listed on the status page printed from Step 1. Select LPD. Select drop down next to “Use” press Select Software.



5. Scroll to printer and select ok.



6. Press Add

Support

1. To Register your Product, go to: <https://www.kyoceradocumentsolutions.us/en/support/register>
2. For additional Information, please go to the URL for the Product Support Page.
www.kyoceradocumentsolutions.us/en/products/mfp/MA2000W
<https://www.kyoceradocumentsolutions.us/en/products/printers/PA2000W>
3. Speak to a Technical Representative **Call 1-800-255-6482**

Documents / Resources



[KYOCERA PA2000w MAC WPS Setup](#) [pdf] User Guide
PA2000w, MAC WPS Setup, PA2000w MAC WPS Setup, WPS Setup

References

- [Download | KYOCERA Document Solutions](#)
- [Kyocera MA2000w - Compact multifunctional printer | Kyocera Document Solutions America](#)
- [Kyocera PA2000w - Compact Printer | Kyocera Document Solutions America](#)
- [Kyocera Portal - Consumer Service](#)

[Manuals+](#).