



Kwikset SmartCode 910 Touchpad Electronic Deadbolt User Guide

[Home](#) » [Kwikset](#) » Kwikset SmartCode 910 Touchpad Electronic Deadbolt User Guide 

Contents

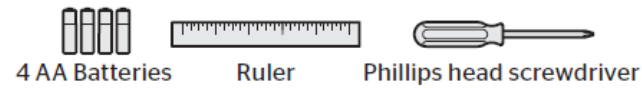
- [1 Kwikset SmartCode 910 Touchpad Electronic Deadbolt User Guide](#)
- [2 Required tools](#)
- [3 Parts in the box](#)
- [4 Pair the lock with your smart home system](#)
- [5 Troubleshooting](#)
- [6 Important Safeguards](#)
- [7 Related Posts](#)

Kwikset

Kwikset SmartCode 910 Touchpad Electronic Deadbolt User Guide



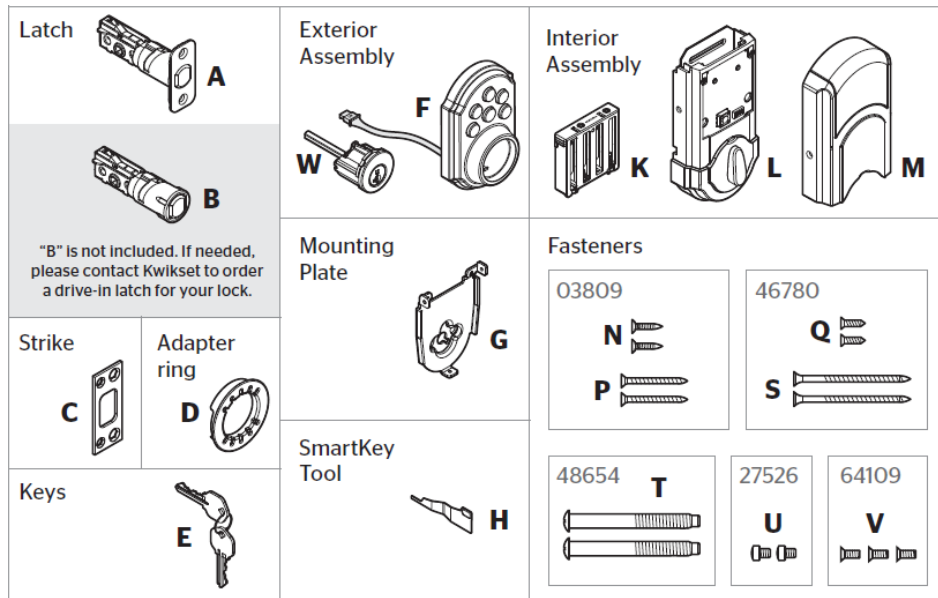
Required tools



Additional Tools (depending on application)

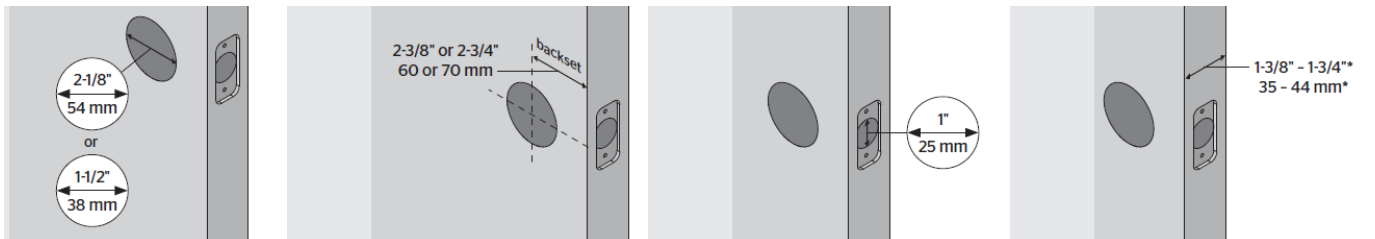


Parts in the box

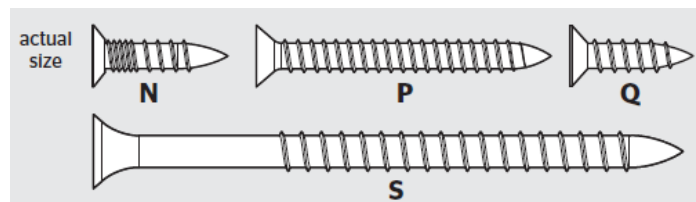


Prepare the door and check the dimensions

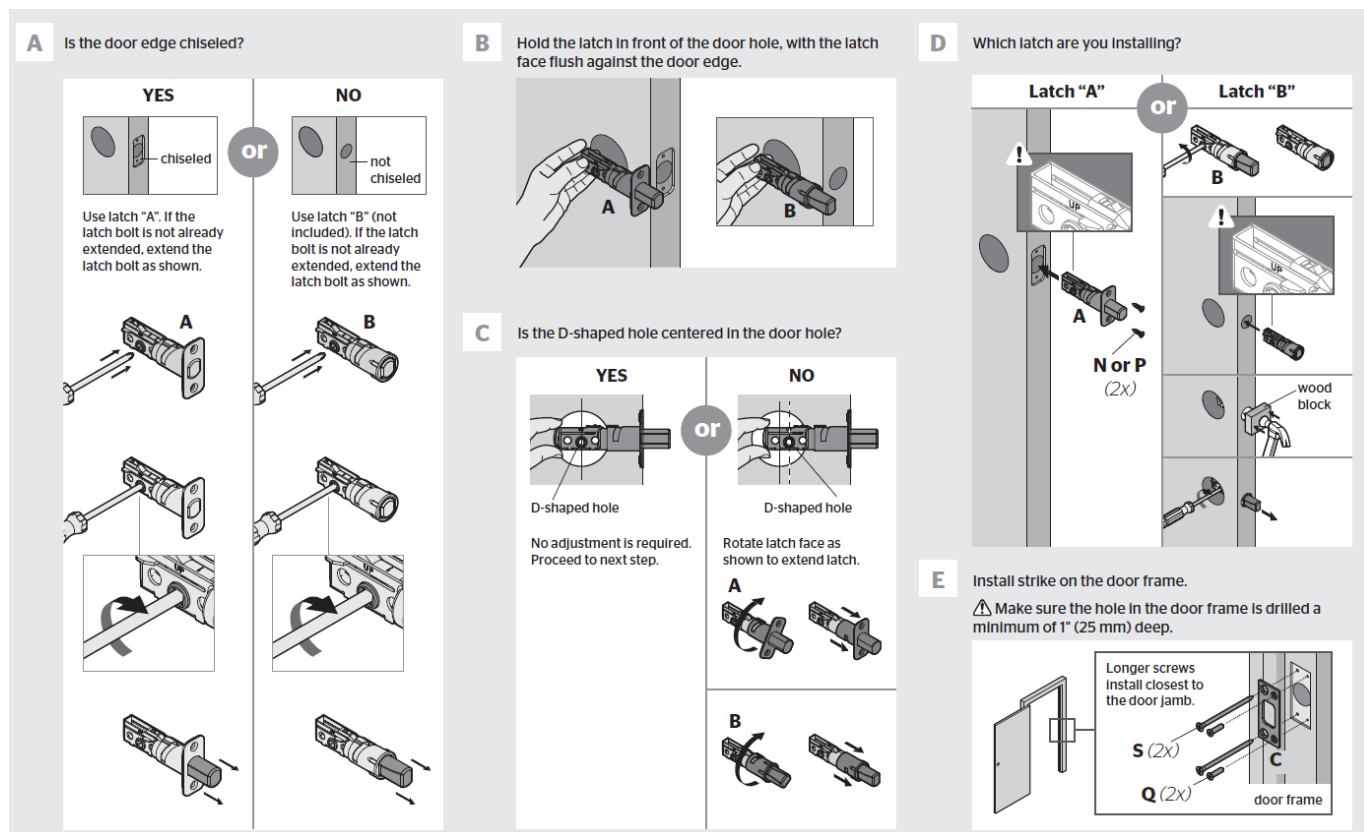
If drilling a new door, use the supplied template and the complete door drilling instructions available at www.kwikset.com/doorprep



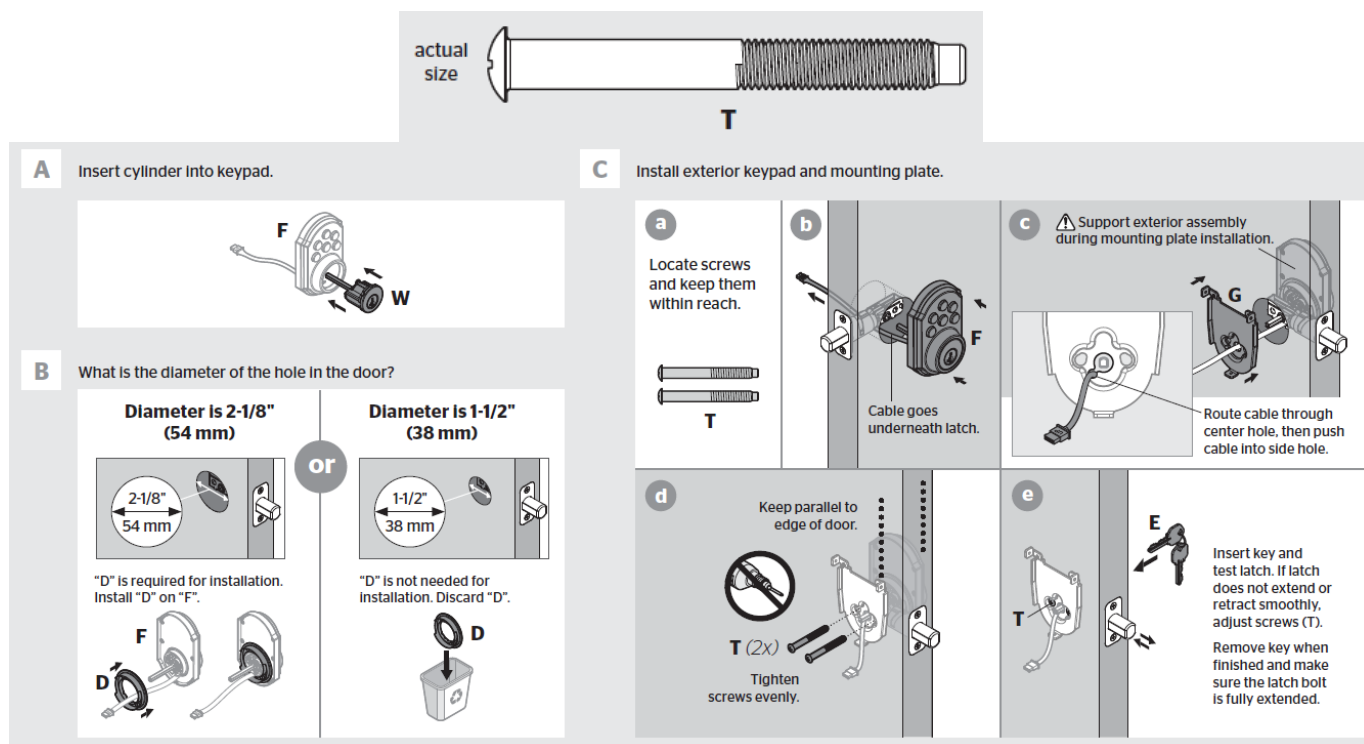
Install the latch and strike



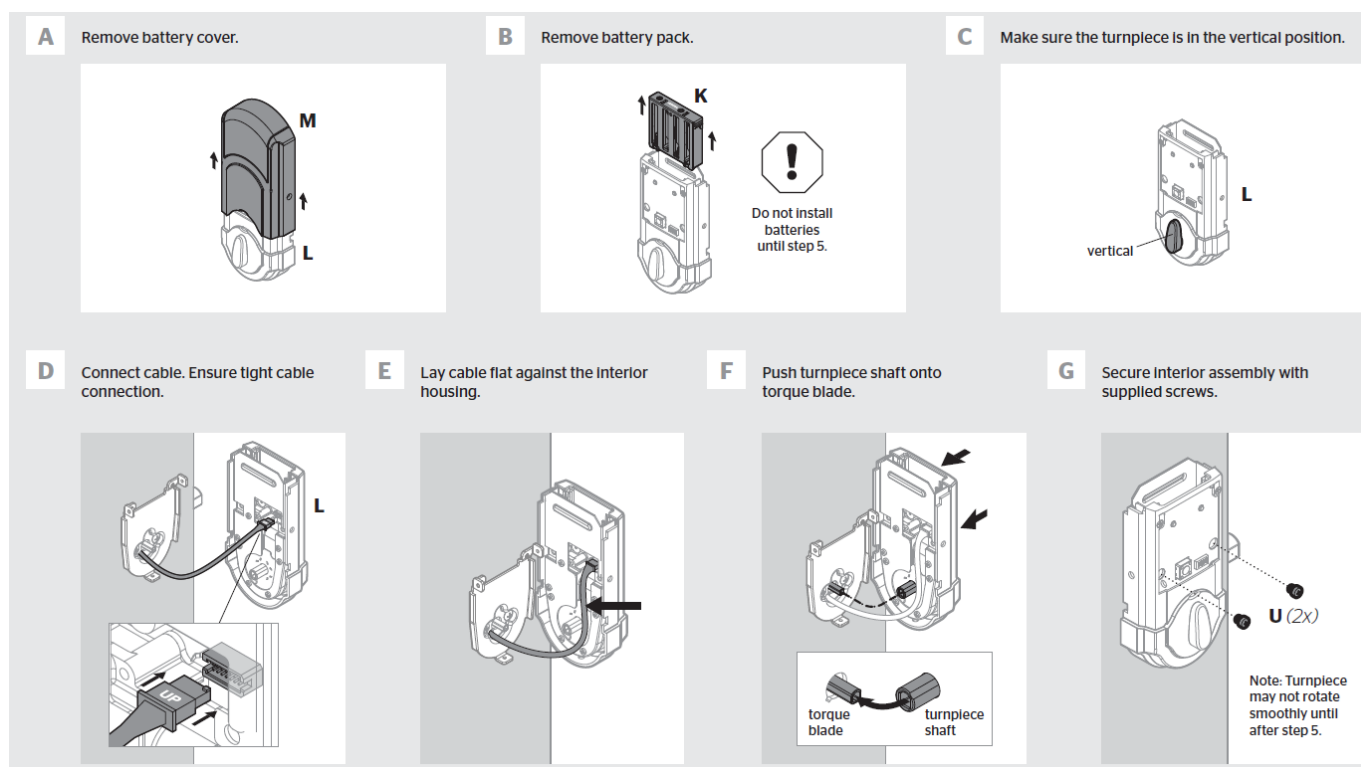
Is the door edge chiseled?



Install the exterior keypad

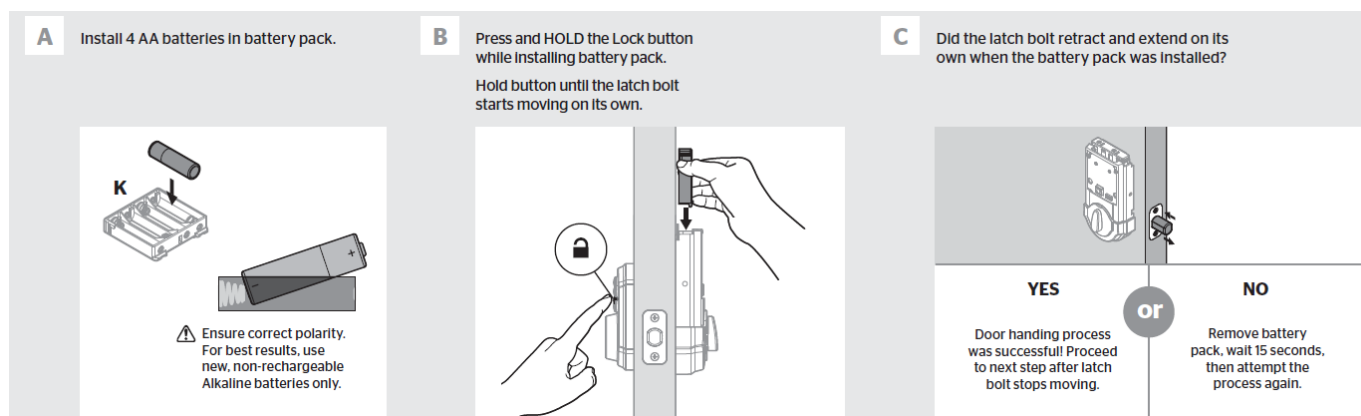


Install the interior assembly



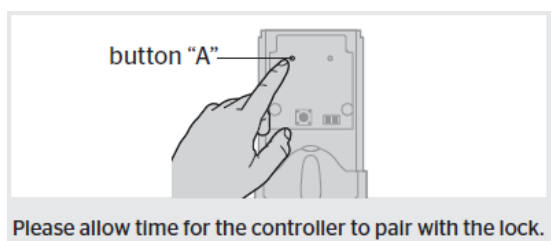
Install the batteries and perform the door handing process

This step will teach your lock the orientation of your door and is crucial to lock operation



Pair the lock with your smart home system

If your controller is S2-compatible, please refer to the S2 Pairing Guide on the SmartCode 910 page at www.kwikset.com.

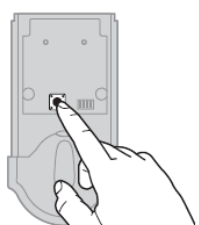
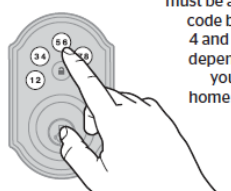
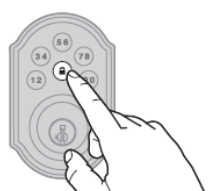
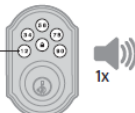
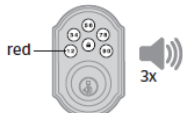
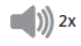


- Initiate the pairing process at your smart home controller. Refer to your smart home system instructions for more information
- When prompted by your smart home system to initiate pairing at the lock, press button "A" on the lock interior one time.

- The red LED will illuminate when pairing mode has been entered. Please allow time for the controller to pair with the lock.
- If the pairing process is successful, rename the lock in your system (if applicable).
- If pairing is unsuccessful, follow your system's instructions to remove the lock from the controller and any other network, then press the button "A" on the lock one time. Perform steps 6A-6C again.
- If pairing is still unsuccessful, consult the Programming and Troubleshooting Guide on the SmartCode 910 page at www.kwikset.com.

Add user codes (30 max)

It is recommended that you add and delete all user codes through your smart home control system. If your system does not allow this, codes may be added directly to the lock as shown here.

<p>A Make sure the door is open. Press the Program button the number of times that corresponds to the user code position being programmed.</p> <p>Example: If programming the third code, press the button three times.</p> 	<p>B Enter user code. A total of 30 user codes may be programmed.</p> <p>Each user code must be a unique code between 4 and 8 digits, depending on your smart home system.</p> 	<p>C Press Lock button once.</p> 
<p>D What lights and sounds does the lock produce?</p>		
<p>One green flash with one beep*</p> <p>green</p>  <p>1x</p> <p>Programming was successful.</p>	<p>or</p> <p>Three red flashes with three beeps*</p> <p>red</p>  <p>3x</p> <p>Programming was unsuccessful.</p> <p>Make sure the user code is not a duplicate and that it is between 4 and 8 digits during your next attempt.</p>	<p>or</p> <p>Two beeps*</p>  <p>2x</p> <p>Programming time out.</p> <p>Make sure not to pause for more than 5 seconds during programming.</p>

Programming Timeout

If no button is pressed for five seconds, the system will time out and you will need to restart the procedure.

- Make sure the door is open. Press the Program button the number of times that corresponds to the user code position being programmed.
- Enter user code. A total of 30 user codes may be programmed.
- Press the Lock button once.
- What lights and sounds does the lock produce?

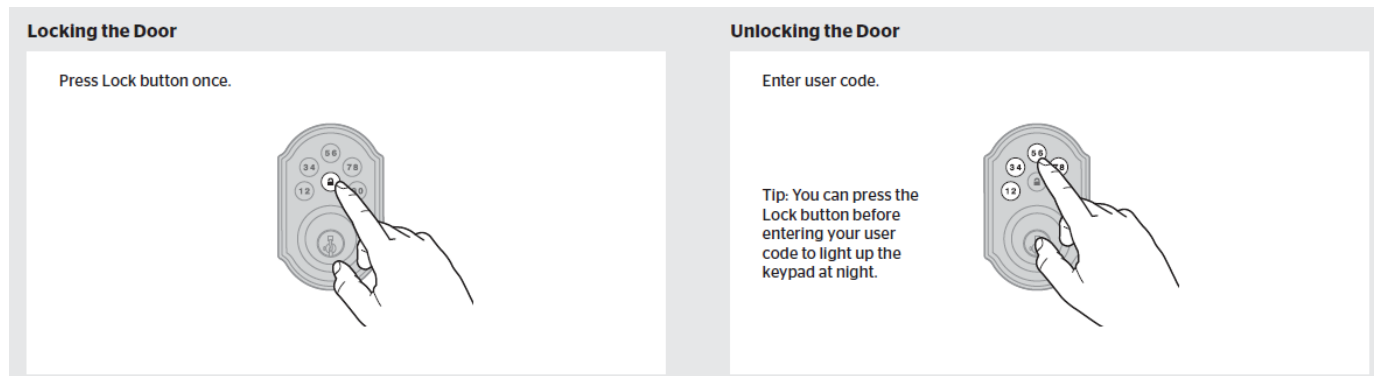
A beeping sound will only be heard if switch #3 (on the lock interior) is in the on position. See "Switches and Status LED Colors" on page 4.

Master code

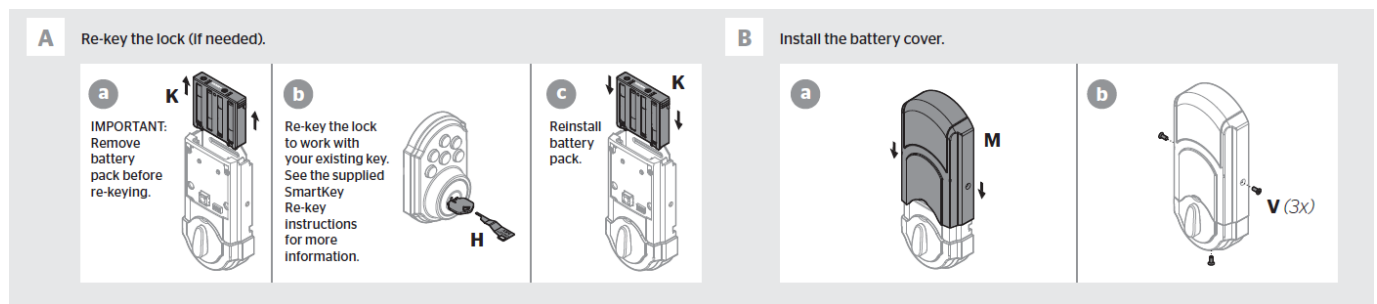
For enhanced security, a master code may be used when adding and deleting user codes. For more information about the master code, download the Programming and Troubleshooting Guide on the SmartCode 910 page at www.kwikset.com.

Test the lock (review normal operation)

Confirm that the code(s) added in the previous step can unlock the door.

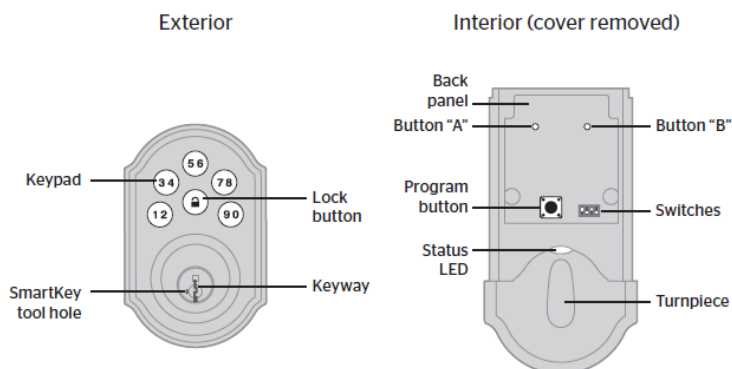


Re-key the lock (if needed) and install the battery cover



- Re-key the lock (if needed).
- Install the battery cover.

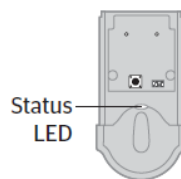
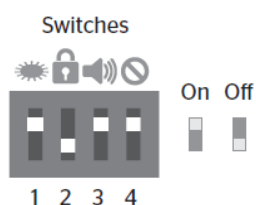
SmartCode at a Glance



System Alerts

Alert	Reason	Solution
Keypad flashes red 1 time with 1 beep*	Door jammed while attempting to lock.	Manually re-lock door. If needed, reposition strike.
Keypad flashes red 3 times with 3 beeps*	Unsuccessful programming.	Attempt programming procedure again.
	One incorrect code entered.	Re-enter code.
	No user code programmed.	Program at least one user code.
Keypad flashes red 10 times with 10 beeps*	Low battery.	Replace batteries.
Lock beeps 2 times.	Programming timeout.	Attempt programming procedure again, making sure not to pause for more than 5 seconds.
Keypad flashes red 3 times.		
Keypad flashes red 6 times with 6 beeps*.		
Keypad flashes red 15 times with 15 beeps*	Three incorrect codes entered within one minute.	Re-enter code after 60 second keypad lock out.

Switches and Status LED colors



Switch	Function
1	Door lock status LED blinks every 6 seconds
2	Lock automatically re-locks door 30 seconds after unlocking. Disabled if no codes are programmed.
3	Audio
4	Not used.

Color	Lock Status
Blinking green	Unlocked
Blinking amber	Locked
Blinking red	Low battery
Solid red	Door handing process did not work properly. See the online Programming and Troubleshooting Guide.

Troubleshooting

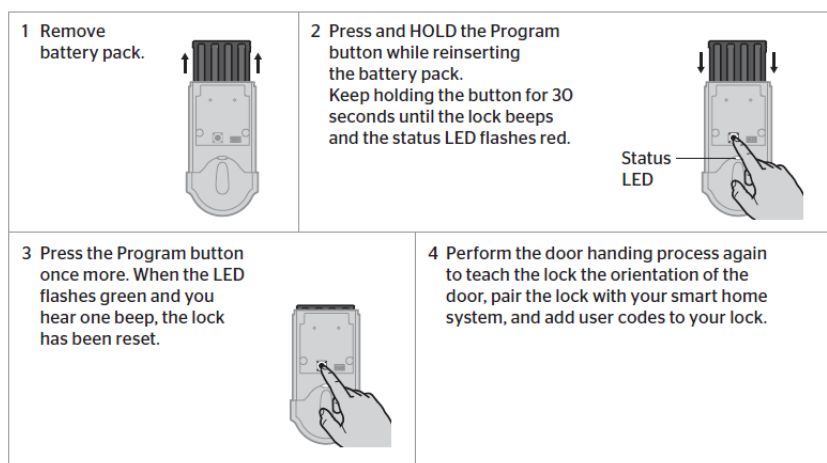
A complete Programming and Troubleshooting Guide is available on the SmartCode 910 page at www.kwikset.com.

Deleting a user code

In order to delete a user code, you must override the code by adding a different user code in the same position. For example, if you want to delete the third code, add a different user code in position three. Test the old user code to make sure it can no longer unlock the door. If you cannot remember the user code position, you may wish to perform a factory reset to delete all codes associated with the lock.

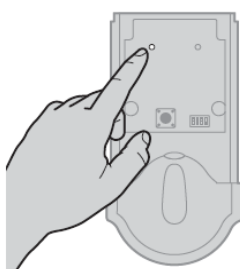
Factory Reset

A factory reset will delete all codes associated with the lock, and it will remove it from your smart home system.



Network Information

Removing the lock from the network Follow your smart home system's instructions to remove the lock from the network. When prompted by the system, press button A" on the lock interior once.



Z-Wave System Notes

This product is a security-enabled Z-wave Plus product and must be used with a Security Enabled Z-Wave controller to be fully utilized. Z-Wave is a “Wireless mesh network,” and results may vary based on building construction and communication path, with 35 feet+ being the typical installed distance from the smart home controller. It may be necessary to install additional Z-Wave beaming capable devices that can serve as repeaters to enhance the communication path between the lock and controller for a more robust Z-Wave network. To assure interoperability, each Z-Wave product must pass a stringent conformance test to assure that it meets the Z-Wave standard for complete compliance with all other devices and controls. The Z-Wave identity mark assures consumers, integrators, dealers, and manufacturers that their products will reliably perform with any other Z-Wave device. And, regardless of the vendor, always-powered nodes may act as a repeater for Kwikset/Weiser/Baldwin products. Z-Wave Configuration and Association Parameters are available on the SmartCode 910 page at www.kwikset.com.

Important Safeguards

1. Read all instructions in their entirety.
2. Familiarize yourself with all warning and caution statements.
3. Remind all family members of safety precautions.
4. Protect your user codes and master codes.
5. Dispose of used batteries according to local laws and regulations.

CAUTION: Prevent unauthorized entry. Since anyone with access to the back panel can change the user codes, you must restrict access to the back panel and routinely check the user codes to ensure they have not been altered without your knowledge. The use of a master code can help protect your system's settings.

WARNING: This Manufacturer advises that no lock can provide complete security by itself. This lock may be defeated by forcible or technical means, or evaded by entry elsewhere on the property. No lock can substitute for caution, awareness of your environment, and common sense. Builder's hardware is available in multiple performance grades to suit the application. In order to enhance security and reduce risk, you should consult a qualified locksmith or other security professional.

Download PDF: [Kwikset SmartCode 910 Touchpad Electronic Deadbolt User Guide](#)