

Kwikset

**917 Electronic
Lever Lock**



Kwikset 917 Electronic Lever Lock Instruction and User Guide

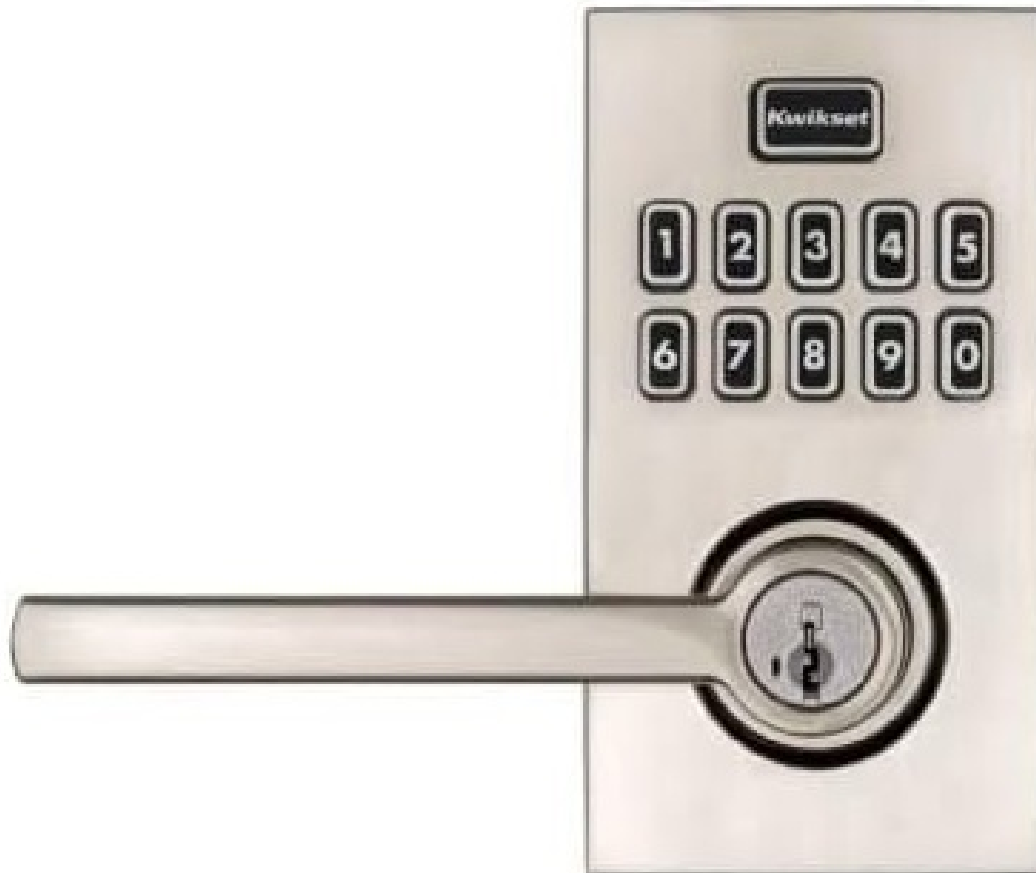
[Home](#) » [Kwikset](#) » Kwikset 917 Electronic Lever Lock Instruction and User Guide 

Contents

- [1 Kwikset 917 Electronic Lever Lock](#)
- [2 Parts in the box](#)
- [3 INSTALLATION](#)
- [4 Install levers](#)
- [5 Test latch operation](#)
- [6 Install battery](#)
- [7 Add user codes](#)
- [8 Emergency Egress](#)
- [9 Additional Programming Features](#)
- [10 How to enable/disable turn piece functionality](#)
- [11 Troubleshooting](#)
- [12 FCC](#)
- [13 Important Safeguards](#)
- [14 FREQUENTLY ASKED QUESTIONS](#)
- [15 VIDEO – PRODUCT OVERVIEW](#)
- [16 References](#)
- [17 Related Posts](#)

Kwikset

Kwikset 917 Electronic Lever Lock



Required tools



Ruler

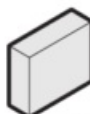


Phillips head screwdriver

Additional Tools (depending on application)



Hammer



Wood block

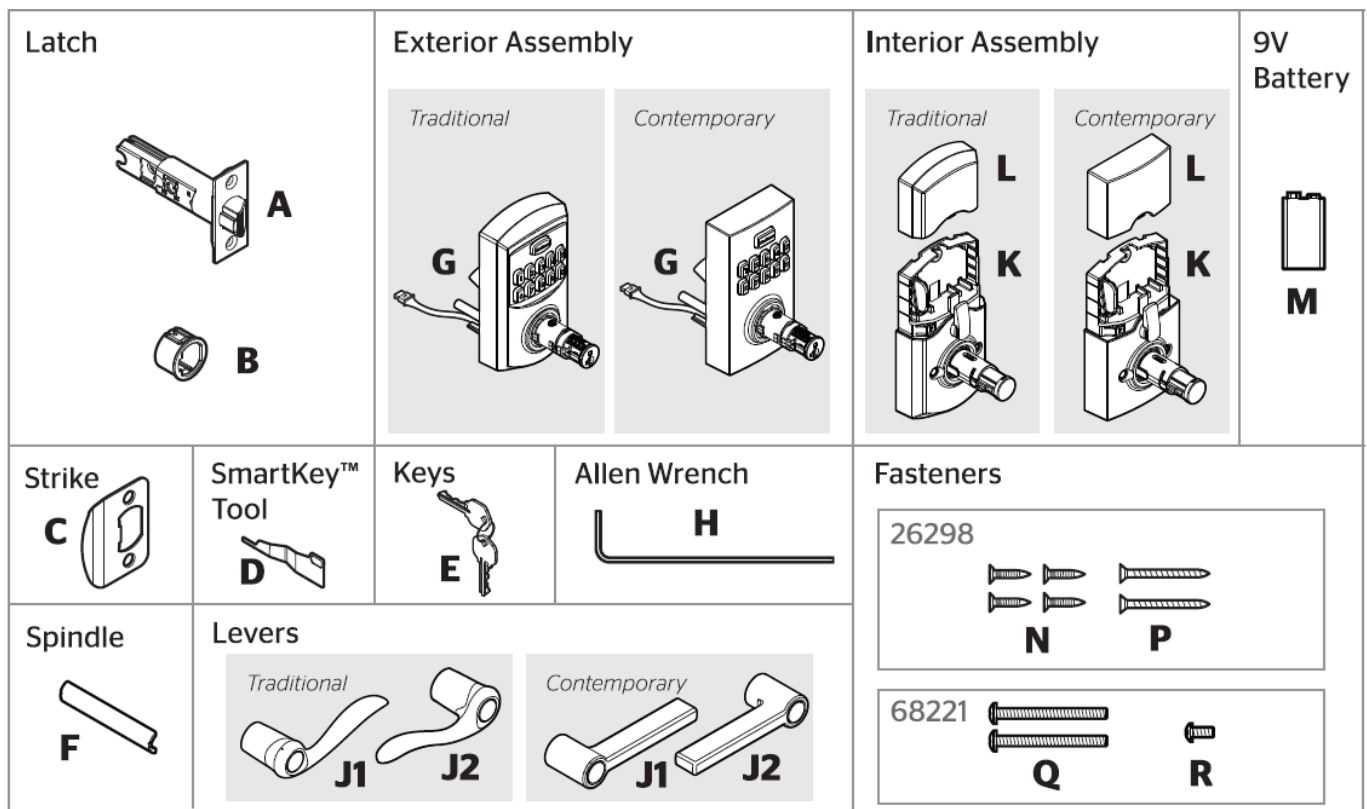


Flathead screwdriver

Kwikset

- [1-800-327-5625](tel:1-800-327-5625)
- www.kwikset.com

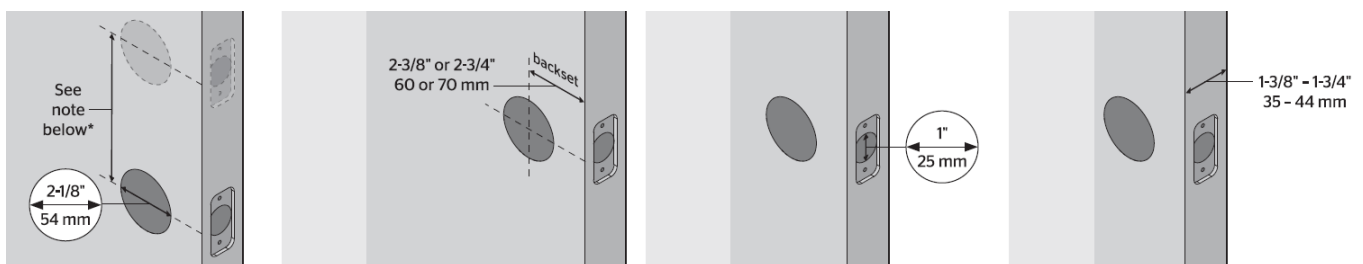
Parts in the box



Prepare the door and check the dimensions.

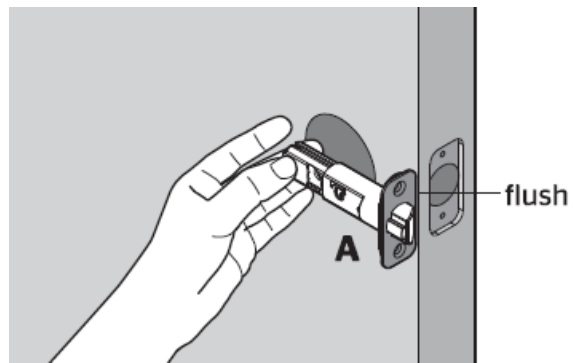
If drilling a new door, use the supplied template and the complete door drilling instructions available at www.kwikset.com/doorprep.

- Measure to confirm that the hole in the door is 2-1/8" (54 mm).
- Measure to confirm that the backset is either 2-3/8" or 2-3/4" (60 or 70 mm).
- Measure to confirm that the hole in the door edge is 1" (25 mm).
- Measure to confirm that the door is between 1-3/8" and 1-3/4" (35 mm and 44 mm) thick.



If you are installing this lever below an existing lock or you plan to install a lock above this lever, make sure that the distance between holes is at least 6-1/2" (165 mm).

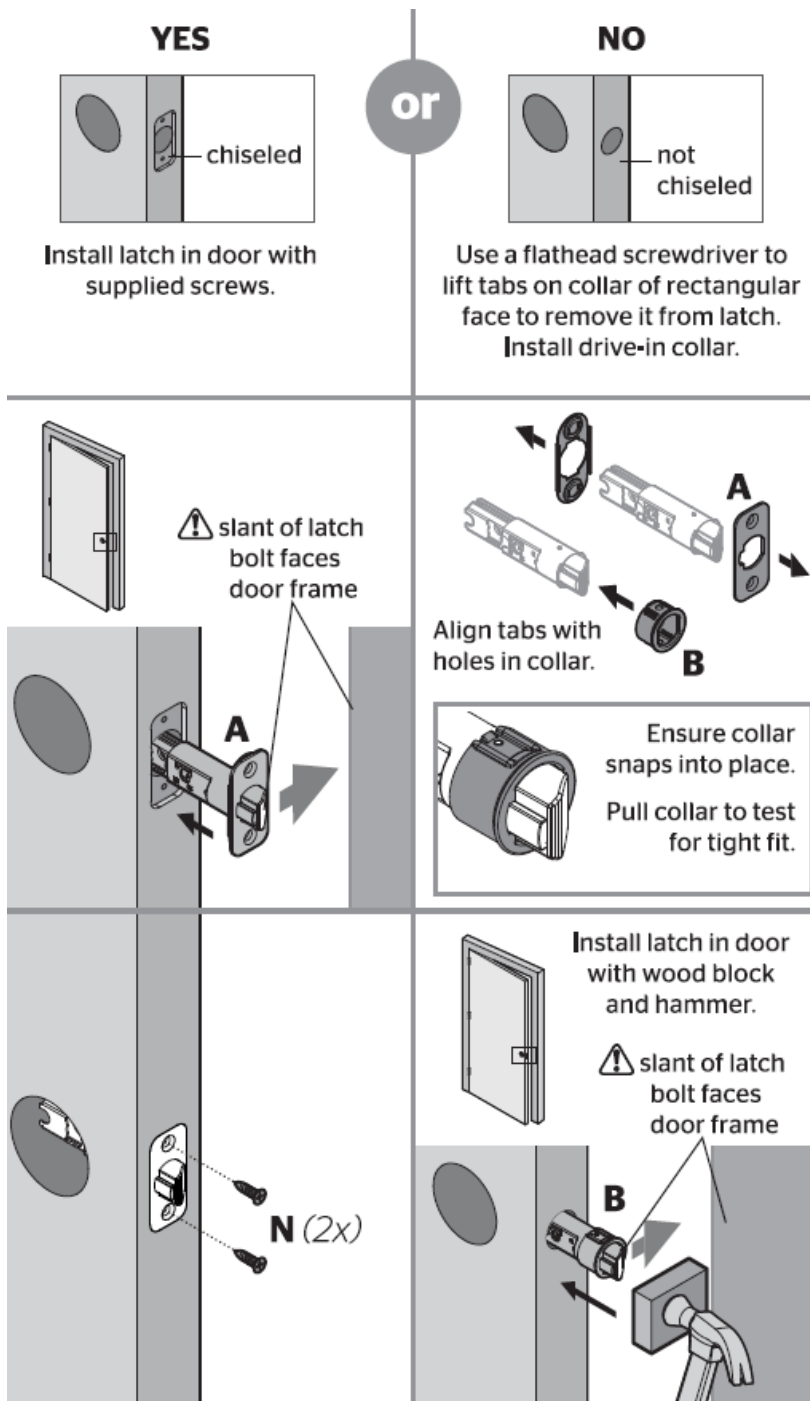
Install the latch and strike. Hold the latch in front of the door hole, with the latch face flush against the door edge.



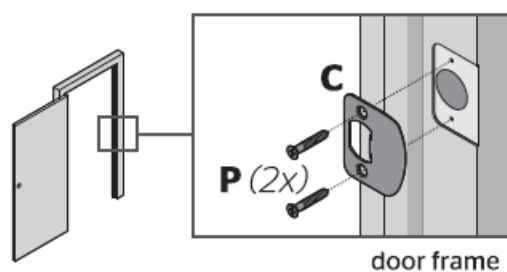
- Are the latch holes centered in the door hole?

YES	NO
<p>No adjustment is required. Proceed to next step.</p>	<p>Move the pin to extend the latch.</p>

- Is the door edge chiseled?

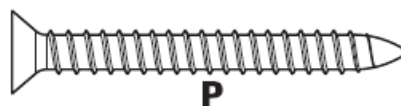
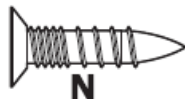


- Install strike on the door frame.



Actual size

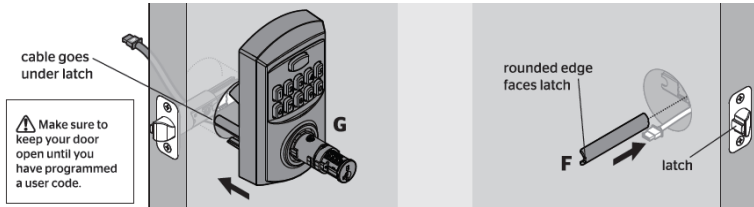
26298



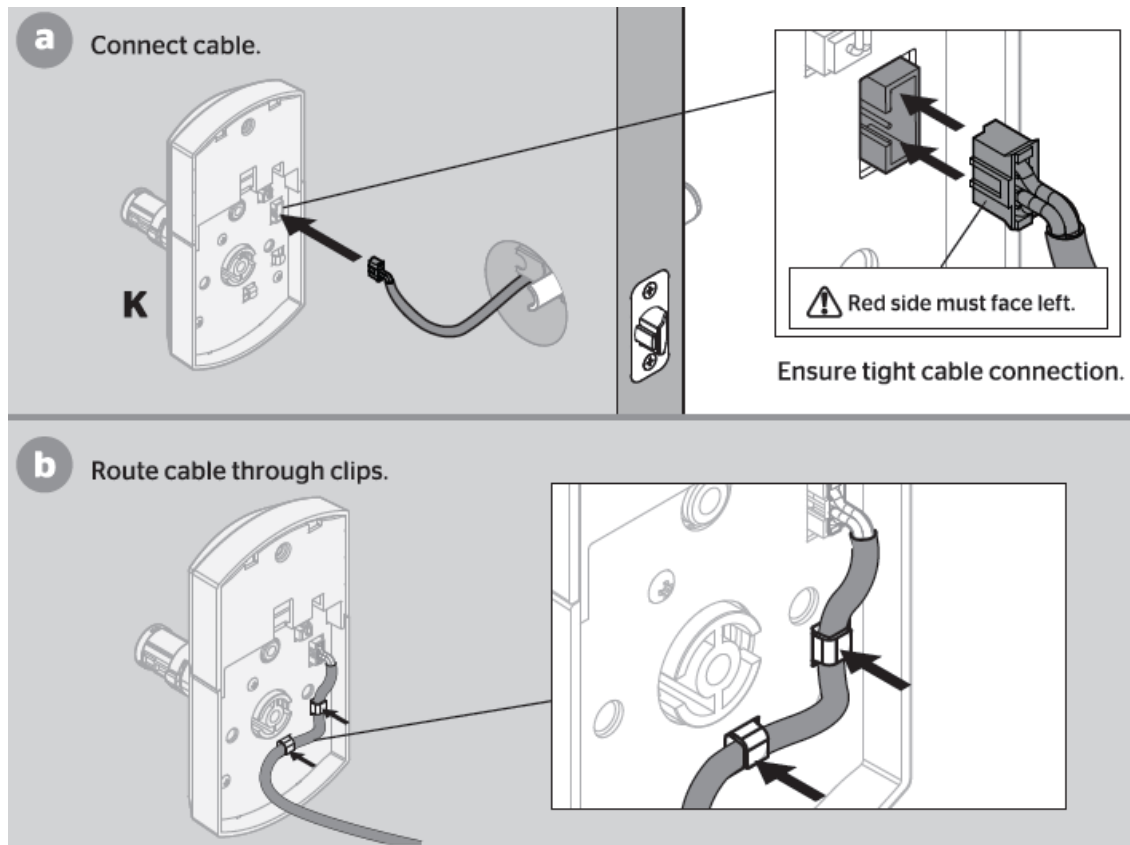
INSTALLATION

Install the exterior keypad, spindle, and interior assembly

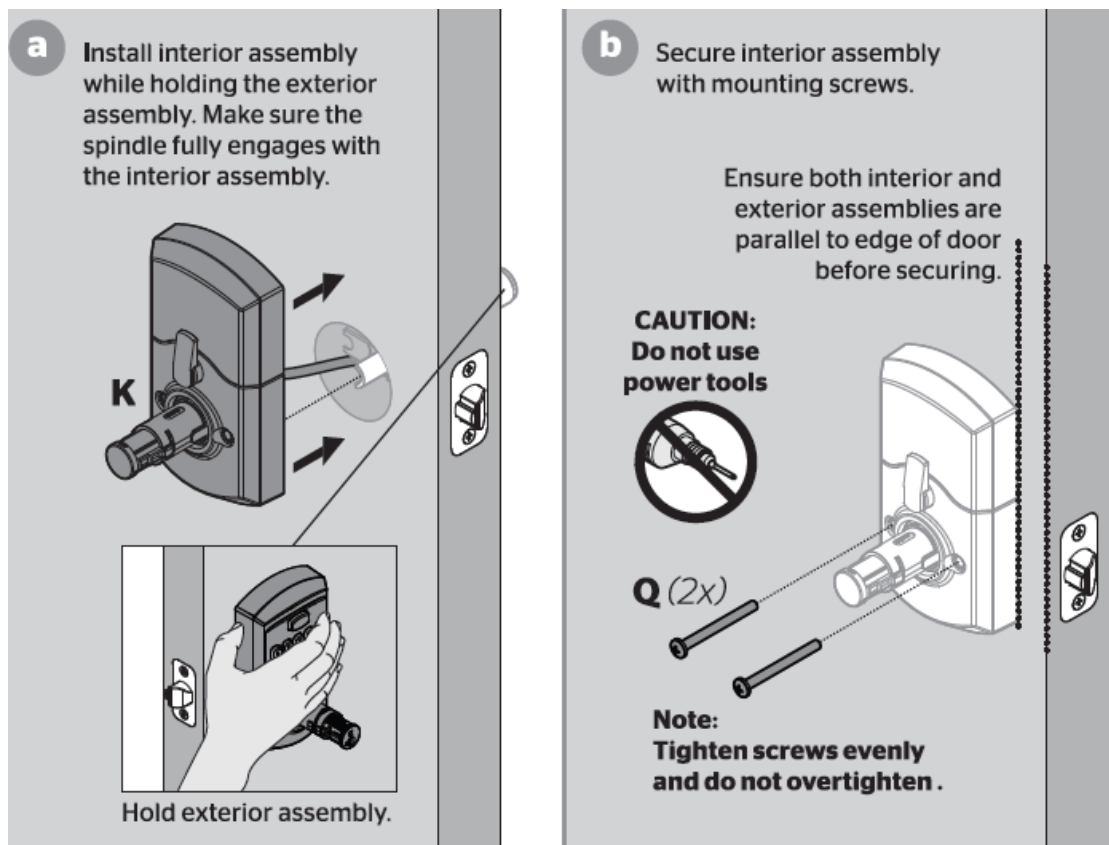
- Install exterior keypad.
- Install spindle.
- **OPTIONAL:** Install security set screw.



- Connect and secure cable to interior assembly.

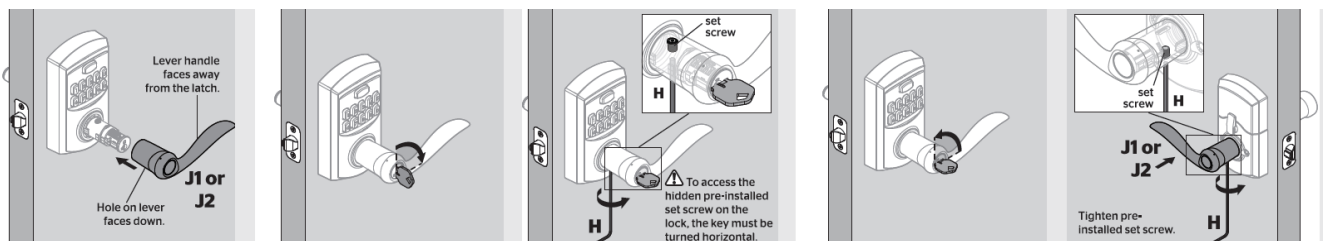


- Install interior assembly and secure with mounting screws.



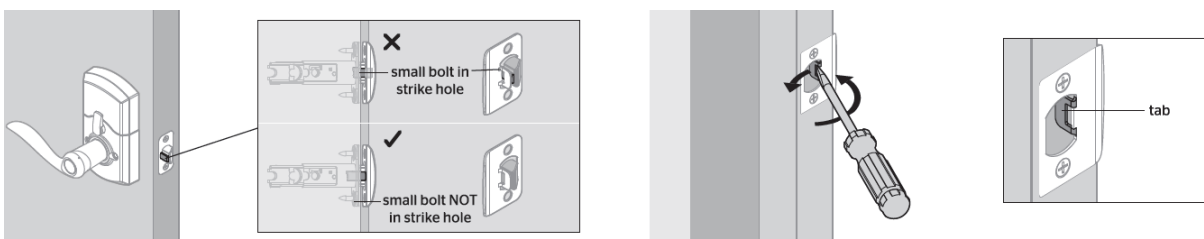
Install levers

- Install exterior lever.
- Insert key and I.D turn 90° clockwise.
- Tighten the pre-installed set screw to secure the exterior lever.
- Turn the key back to a vertical position to remove it.
- Install and secure the interior lever.



Test latch operation

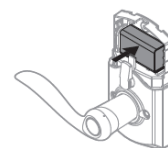
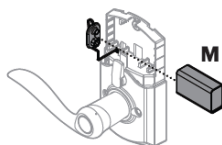
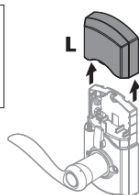
- **Close the door, test latch operation, and make adjustments as needed:** The small bolt of the latch should not enter the strike hole. If it enters the strike hole, reposition the strike.
- If the latch is loose in the strike, adjust the strike tab so it grips the latch bolt better when the door is closed.



Install battery

- Remove the interior cover.
- Connect 9V battery.
- Secure the battery into the interior assembly.

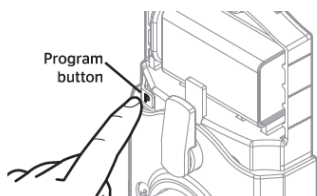
⚠ If you installed the security screw in step 3C, you will need to remove it to install the battery.



Add user codes

Move swiftly during programming. If no digit is pressed for 10 seconds, the system will time out and you will need to restart the procedure.

- Make sure the door is open. Press and release the Program button. You will hear two beeps.
- Press 1. You will hear one short beep and the keypad will flash green once.
- Press Kwikset.



- Enter a User Code. It must be between 4 and 8 digits.
- Press Kwikset.
- You will hear one long beep and the keypad will flash green if successful. If you hear three beeps and the keypad flashes red, it is unsuccessful. Repeat from step A. Reinstall the battery cover.

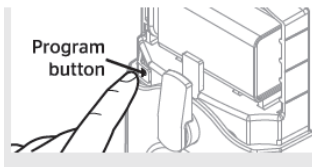


⚠ For security reasons, the first 4 digits of each user code must be unique. For example, you are unable to program a user code **1-2-3-4-5** as well as a user code **1-2-3-4-6**.



OPTIONAL: Enable/ Disable Programming Code

- A Programming Code enables you to make changes without needing to access the Program button. This is ideal for landlords to allow programming from the outside, without access to the interior Program button. Please note that once a Programming Code is enabled, the Program button is disabled and can be used only to factory reset the lock.
- Make sure the door is open. If you have not enabled a Programming Code, press and release the Program button. You will hear two beeps. If you have enabled a Programming Code, enter your Programming Code, then press Kwikset. You will hear one short beep and the keypad will flash green.
- Press 3. You will hear one short beep and the keypad will flash green.
- Press Kwikset.



- Enter a Programming Code. It must be between 4 and 8 digits. The Programming Code cannot be the same as any user code.
- Press Kwikset.
- Re-enter the Programming Code.
- Press Kwikset. You will hear one long beep and the keypad will flash green if successful. If you hear three beeps and the keypad flashes red, it is unsuccessful. Repeat from step A.



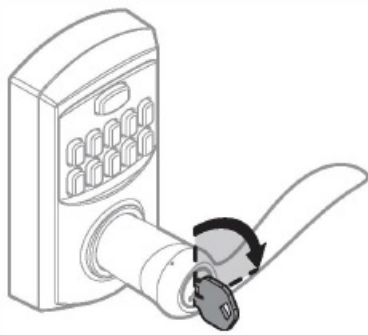
Test the lock and review the lock functionality.

- With the door open and the turn piece set to the auto-lock position, confirm that the code(s) added in the previous step can unlock the door.
- Enter user code.
- The lock will beep twice to indicate that it is unlocked.
- **Tip:** You can press the Kwikset button before entering your user code to light up the keypad at night.



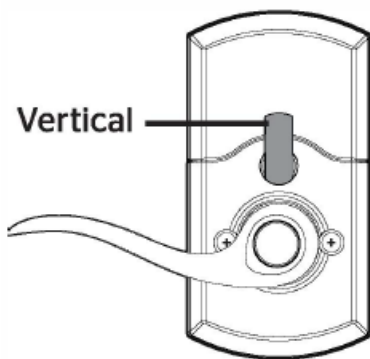
Unlocking the Door with a Key

- To unlock using a key, turn the key clockwise to the horizontal position then turn the lever to open the door.
- To remove the key, turn the key back to the vertical position.

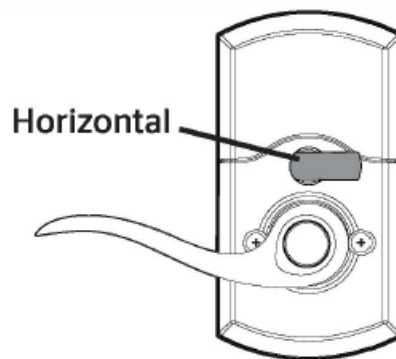


Turn piece Functions – Choosing a Mode

- Auto-lock mode
- Passage mode



Lock will beep once when turnpiece is turned to vertical position.

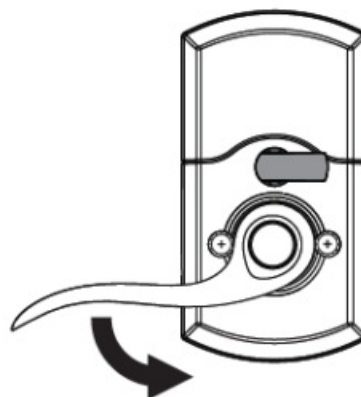
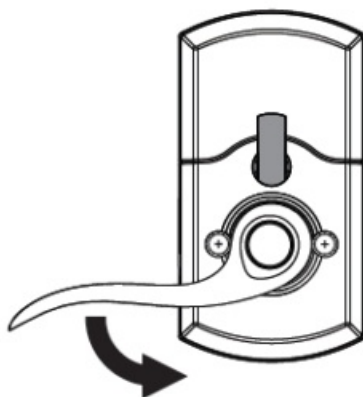


Lock will beep twice when turnpiece is turned to horizontal position.

- A key or code is needed for entry from the outside.
- Stays unlocked, allowing entry without a key or code.

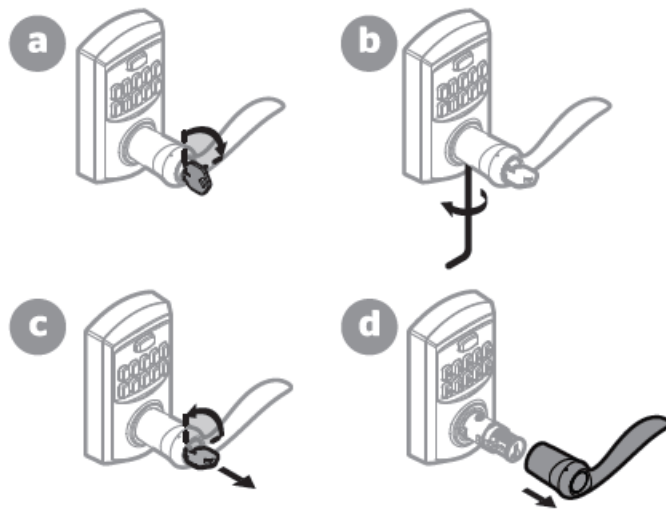
Emergency Egress

The interior lever of this lock will always open the door when turned, regardless of whether it is locked or unlocked. This is to allow for a safe and easy exit in case of emergency.



Re-key the lock (if needed)

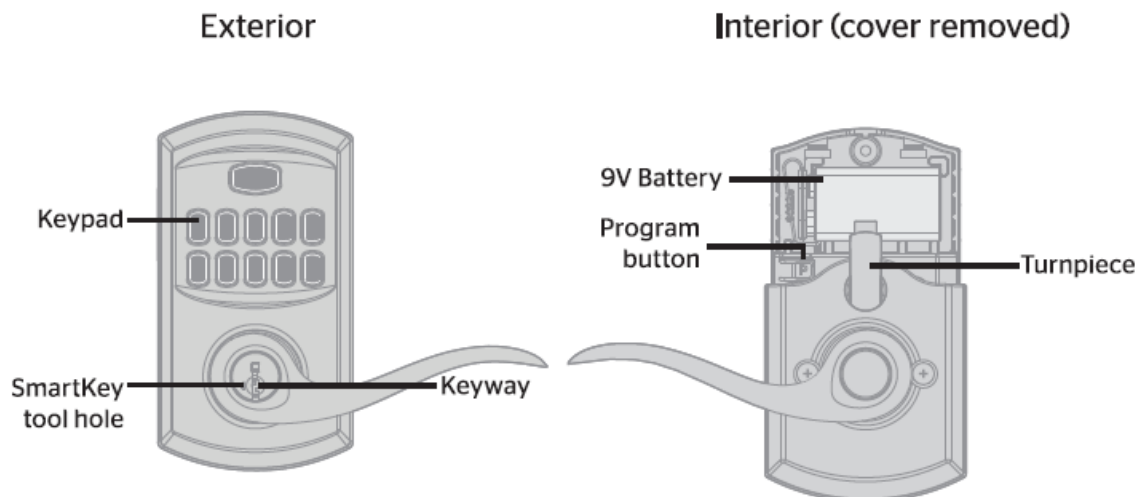
1. **IMPORTANT:** Remove the lever before re-keying.



2. Re-key the lock to work with your existing key. See the supplied SmartKey Re-key instructions for more information.



SmartCode 917 at a Glance



System Signals

Use Cases

- Correct user code entered to unlock the door
- Lock auto-locks
- The turnpike rotated to unlock the position

- Turn piece rotated to the locked position
- Low battery alarm
- 3 incorrect user codes entered
- Entering factory reset mode after the Program button is pressed and held for 30 seconds.
- Entering programming mode after pressing and releasing the Program button Successful programming
- Unsuccessful programming

Sound

- 2 short beeps
- 1 long beep
- 2 short beeps
- 1 long beep
- 10 short beeps
- 15 long beeps
- 1 long beep
- 2 beeps
- 1 long beep
- 3 short beeps

Light

- 2 short green flashes
- 1 long red flash
- None
- None
- 10 short red flashes
- 15 long red flashes
- None
- None
- 1 long green flash
- 3 short red flashes

Additional Programming Features

How to add permanent or one-time User Codes

1. Make sure the door is open.
2. If you have not enabled a Programming Code, press and release the Program button. You will hear two beeps.
If you have enabled a Programming Code, enter your Programming Code, then press Kwikset. You will hear one short beep and the keypad will flash green.
3. Press 1 to add a permanent user code that can be used for entry at all times, until deleted.
4. Press 7 to add a one-time user code. A one-time user code may be used only once, which will be deleted immediately after use (typically used in emergency cases when you need to give one-time access to a person).

You will hear one short beep and the keypad will flash green.

5. Press Kwikset.
6. Enter a new User Code. It must be between 4 and 8 digits. For security reasons, the first 4 digits of each user code must be unique. For example, you are unable to program a user code 4-8-1-5-1 as well as a user code 4-8-1-5-2.
7. Press Kwikset. You will hear one long beep and the keypad will flash green if successful. If you hear three beeps and the keypad flashes red, it is successful. Repeat from step 1.

How to enable/disable User Codes

If User Codes are disabled (**example:** when you go on vacation), the Jock can only be operated by the key.

1. Make sure the door is open.
2. If you have not enabled a Programming Code, press and release the Program button. You will hear two beeps. If you have enabled a Programming Code, enter your Programming Code, then press Kwikset. You will hear one short beep and the keypad will flash green.
3. Press 6. You will hear one short beep and the keypad will flash green.
4. Press Kwikset. You will hear one long beep and the keypad will flash green if successful. If you hear three beeps and the keypad flashes red, it is unsuccessful. Repeat from step 1.

How to mute/unmute lock

If the lock is muted, you will not hear beeping during programming, or mal operation. Or system signals. You will still get a low-battery alarm.

1. Make sure the door is open.
2. If you have not enabled a Programming Code, press and release the Program button. You will hear two beeps. If you have enabled a Programming Code, enter your Programming Code, then press Kwikset. You will hear one short beep and the keypad will flash green.
3. Press S. You will hear one short beep and the keypad will flash green.
4. Press Kwikset. You will hear one long beep and the keypad will flash green if successful. If you hear three beeps and the keypad flashes red, it is unsuccessful. Repeat from step 1.

How to delete individual User Codes

1. Make sure the door is open.
2. If you have not enabled a Programming Code, press and release the Program button. You will hear two beeps. If you have enabled a Programming Code, enter your Programming Code, then press Kwikset. You will hear one short beep and the keypad will flash green.
3. Press 2 to delete a user code. You will hear one short beep and the keypad will flash green.
4. Press Kwikset
5. Enter the User Code you wish to delete. Press Kwikset.
6. Enter the User Code Again.
7. Press Kwikset. You will hear one long beep and the keypad will flash green if successful. If you hear three beeps and the keypad flashes red, it is unsuccessful. Repeat from step 1.

How to delete all User Codes

1. Make sure the door is open.
2. If you have not enabled a Programming Code, press and release the Program button. You will hear two beeps.
If you have enabled a Programming Code, enter your Programming Code, then press Kwikset. You will hear one short beep and the keypad will flash green.
3. Press 4- You will hear one short beep and the keypad will flash green.
4. Press Kwikset.
5. Enter 9-9-9-9-9-9.
6. Press Kwikset.
7. Enter 9-9-9-9-9-9.
8. Press KwKwikset You will hear one long beep and the keypad will flash green if successful. If you hear three beeps and the keypad flashes red, it is unsuccessful. Repeat from step 1.

How to change the auto-locking duration

1. Make sure the door is open.
2. If you have not enabled a Programming Code, press and release the Program button. You will hear two beeps.
If you have enabled a Programming Code, enter your Programming Code, then press Kwikset. You will hear one short beep and the keypad will flash green.
3. Press 8. You will hear one short beep and the keypad will flash green.
4. Press KwKwikset Enter delay time between 1-99 seconds.
5. Press KKwikset You will hear one long beep and the keypad will flash green if successful. If you hear three beeps and the keypad flashes red, it is unsuccessful. Repeat from step 1.

How to enable/disable turn piece functionality

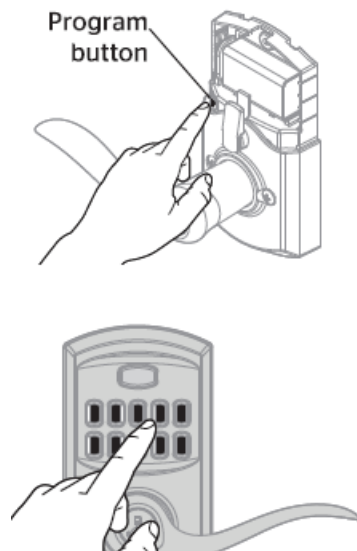
How to enable/disable turn piece functionality after each entry. The turn piece will rotate but will not activate passage mode. User code or key will always be required for entry.

1. Make sure the door is open.
2. If you have not enabled a Programming Code, press and release the Program button. You will hear two beeps.
If you have enabled a Programming Code, enter your Programming Code, then press Kwikset. You will hear one short beep and the keypad will flash green.
3. Press 9. You will hear one long beep and the keypad will flash green.
4. Press Kwikset. You will hear one long beep and the keypad will flash green if successful. If you hear three beeps and the keypad flashes red, it is unsuccessful. Repeat from step 1.

Factory Reset

A factory reset will delete all codes associated with the lock.

1. Make sure the door is open and unlocked.
2. Press and hold the Program button until you hear one long beep (approximately 30 seconds), then release the Program button.
3. Press and release the Program button again. You will hear one short beep.
4. Test with an existing User Code, the lock should not work.



Troubleshooting

- **KeyThe keypad not responding.**
 - Change battery.
- **The desired user code cannot be programmed.**
 - For security reasons, the first 4 digits of each user code must be unique. For example, you are unable to program a user code 4-8-1-5-1 as well as a user code 4-8-1-5-2.
- **The key cannot be removed when unlocked.**
 - This is a feature to ensure the door is always locked and the key is removed (store room function). To remove the key, return the key to a vertical position.
- **Emergency egress function**
 - This lock has an emergency egress function which allows you to exit by turning the lever on the inside, regardless of whether it is in Auto-lock or Passage mode.

Regulatory Compliance

This product complies with standards established by the following regulatory bodies:

- Federal Communications Commission (FCC)
- Industry Canada

FCC

This device complies with Part 15 of the FCC Rules. Operation is subject to the following two conditions:

1. this device may not cause harmful interference, and
2. this device must accept any interference received, including interference that may cause undesired operation.

This equipment has been tested and found to comply with the limits for a Class B digital device, under Part 15 of the FCC Rules. These limits are designed to provide reasonable protection against harmful interference in a residential installation. This equipment generates, uses, and can radiate radio frequency energy and, if not

installed and used by the instructions, may cause harmful interference to radio communications. However, there is no guarantee that interference will not occur in a particular installation. If this equipment does cause harmful interference to radio or television reception, which can be determined by turning the equipment off and on, the user is encouraged to try to correct the interference by one or more of the following measures:

- Reorient or relocate the receiving antenna.
- Increase the separation between the equipment and the receiver.
- Connect the equipment to an outlet on a circuit different from that to which the receiver is connected.
- Consult the dealer or an experienced radio/TV technician for help.

IMPORTANT! Changes or modifications not expressly approved by the manufacturer could void the user's authority to operate the equipment.

Industry Canada

This device complies with Industry Canada license-exempt RSS standard(s). Operation is subject to the following two conditions:

1. this device may not cause interference
2. this device must accept any interference, including interference that may cause undesired operation of the device.

Important Safeguards

1. Read all instructions in their entirety.
2. Familiarize yourself with all warning and caution statements.
3. Remind all users of safety precautions.
4. Protect your user codes and programming code.
5. Dispose of used batteries according to local laws and regulations.

CAUTION: Prevent unauthorized entry. Since anyone with access to the back panel can change the user codes, you must restrict access to the back panel and routinely check the user codes to ensure they have not been altered without your knowledge. The use of a program code can help protect your system's settings.

WARNING: This Manufacturer advises that no lock can provide complete security by itself. This lock may be defeated by forcible or technical means. Or evaded by entry elsewhere on the property. No lock can substitute for caution, awareness of your environment, and common sense. Builder's hardware is available in multiple performance grades to suit the application. To enhance security and reduce risk. You should consult a qualified locksmith or other security professional.

FREQUENTLY ASKED QUESTIONS

What type of locking mechanism does the Kwikset 917 SmartCode 917 feature?

The Kwikset 917 Electronic Lever Lock utilizes a motorized deadbolt with an illuminated keypad for secure keyless entry, offering quick and quiet operation.

How many unique user codes can be programmed with the Kwikset SmartCode 917?

The Kwikset 917 SmartCode 917 supports up to 30 customizable user codes, including one-time-use codes for temporary access.

How does the Kwikset SmartKey Security enhance the lock's safety?

Kwikset's SmartKey Security technology safeguards against advanced break-in techniques and allows users to re-key the lock themselves in seconds.

What are the installation requirements for the Kwikset 917 Electronic Lever Lock?

The Kwikset 917 can be installed in minutes using a screwdriver. It fits doors with a thickness of 1-3/8

What is the warranty offered for the Kwikset SmartCode 917?

The Kwikset SmartCode 917 comes with a lifetime mechanical and finish warranty, along with a one-year warranty on its electronics.

What kind of battery powers the Kwikset 917 Electronic Lever Lock, and how long does it last?

The lock uses one 9V battery, which lasts up to three years under normal usage.

What is the control method for the Kwikset 917 SmartCode 917?

The lock operates via touch control, allowing for seamless keyless entry.

How does the illuminated keypad of the Kwikset 917 enhance usability?

The illuminated keypad makes it easy to use the lock in low-light conditions, ensuring convenience during nighttime access.

What type of doors is the Kwikset 917 compatible with?

The Kwikset 917 fits standard doors with a backset, cross bore, and thickness of 1-3/8

What finishes are available for the Kwikset SmartCode 917?

The Kwikset 917 comes in a Satin Nickel finish, providing a contemporary look.

Why is the Kwikset SmartCode 917 considered an alternative to deadbolts?

The Kwikset 917 combines a secure electronic lever lock with SmartKey technology, offering robust security without requiring a traditional deadbolt setup.

Why is my Kwikset 917 Electronic Lever Lock not locking or unlocking electronically?

Ensure the batteries are installed correctly and have sufficient charge. Use high-quality alkaline batteries for optimal performance. If the issue persists, check if the lock is in Holding Mode (automatically sets lock direction) and recalibrate if necessary.

How do I reset my Kwikset 917 Electronic Lever Lock to factory settings?

Remove the battery pack, hold the program button while reinserting the batteries, and continue holding the button for 30 seconds. The lock will beep and flash, indicating it has reset to factory settings.

What should I do if the Kwikset 917 Electronic Lever Lock does not recognize user codes?

Confirm the codes were programmed correctly and are within the capacity of the lock (a maximum of 30 codes). If the issue persists, delete all user codes and reprogram them according to the manual instructions.

Why does the Kwikset 917 Electronic Lever Lock beep continuously?

Continuous beeping typically indicates low battery. Replace all four AA batteries immediately. If the issue

persists after a battery replacement, ensure the battery connections are clean and secure.

VIDEO – PRODUCT OVERVIEW



[Download the PDF link: Knives 6813 / 2024 from User-2.07-Elastration and User Guide Lever-Lock-Instruction-and-User-Guide.mp4](#)

References

- [User Manual](#)

[Manuals+](#), [Privacy Policy](#)

This website is an independent publication and is neither affiliated with nor endorsed by any of the trademark owners. The "Bluetooth®" word mark and logos are registered trademarks owned by Bluetooth SIG, Inc. The "Wi-Fi®" word mark and logos are registered trademarks owned by the Wi-Fi Alliance. Any use of these marks on this website does not imply any affiliation with or endorsement.