



Kwikboost KB94018 Mini Charging Hub User Guide

[Home](#) » [kwikboost](#) » Kwikboost KB94018 Mini Charging Hub User Guide 

Contents

- [1 Kwikboost KB94018 Mini Charging Hub](#)
- [2 Kwik Start Guide](#)
- [3 Installation Tips](#)
- [4 Assembly](#)
- [5 Documents / Resources](#)
 - [5.1 References](#)
- [6 Related Posts](#)



Kwikboost KB94018 Mini Charging Hub



Included Hardware

- Kwik Start Guide
- 3 Zip Ties

Required Hardware:

- Mini Charging Hub Wall Mount
- Wall Anchor (x4)
- Mounting Screw (x4)
- Drilling Template
- Drill & 3/16 Drill bit

Installation Tips

Use the lines on the drilling template to ensure the unit is level during installation.

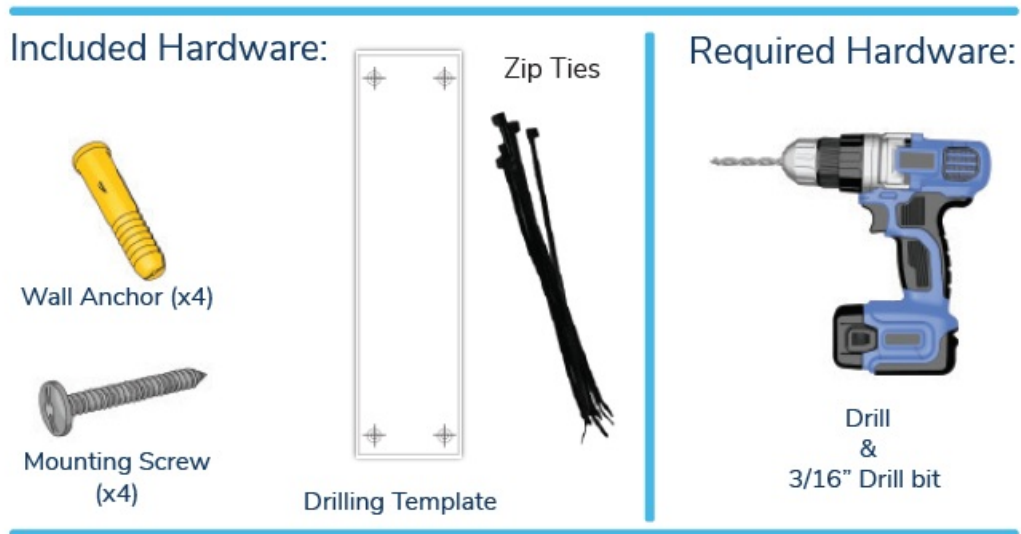
Assembly Steps

1. Drive mounting screws into the top two wall anchors without fully tightening. Leave a small gap of approximately 1/8 inch.
2. Set the charging station face down on a flat surface. Connect the power supply and secure the cord inside the column using zip ties and pads provided.
3. Using the drilling template markings, drill 4 holes with a 3/16 drill bit. Insert plastic wall anchors into each hole.
4. Align the keyholes on the top rear of the column with the mounting screws on the wall. Slide the unit down to secure it in place. Align the mount holes at the bottom with the remaining wall anchors and secure with

mounting screws.

5. Once mounted, plug the power supply into a wall outlet.

Kwik Start Guide

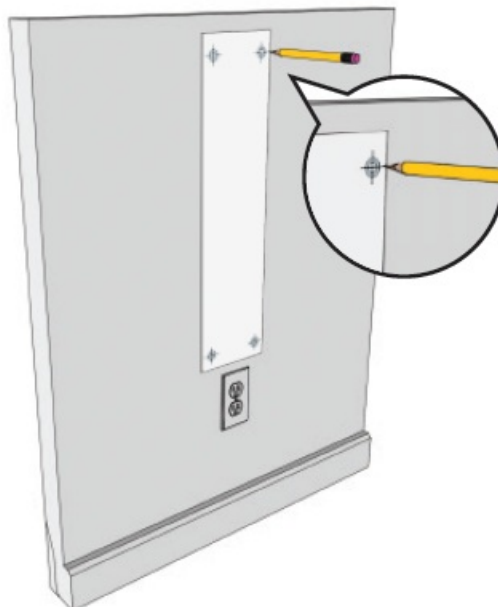


Installation Tips

Use the lines on the drilling template to make sure the unit is level

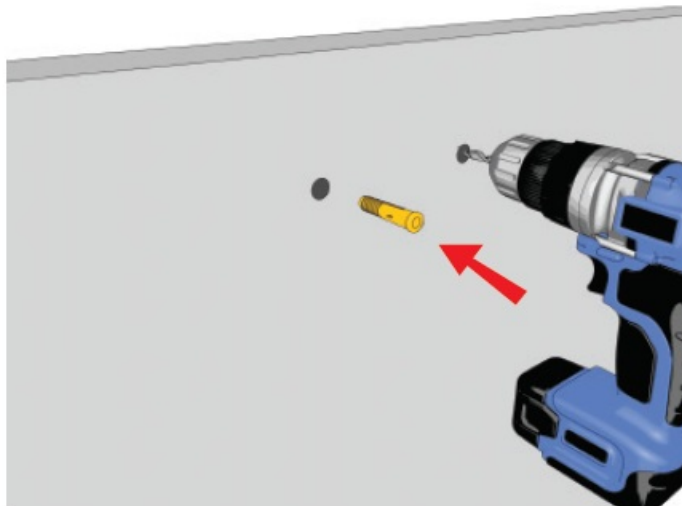
Assembly

1. Using the drilling template, mark the location of the charging hub. TIP: Place the hub directly above an available wall outlet, if possible.



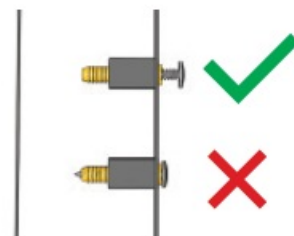
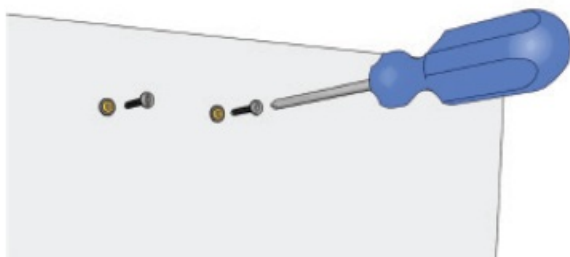
2. Using the markings created with the drilling template, drill 4 holes with a 3/16" drill bit. After drilling, insert a plastic wall anchor into each of the holes.
 - IMPORTANT: Phone/tablet charging only.
 - Not compatible with laptops.

2



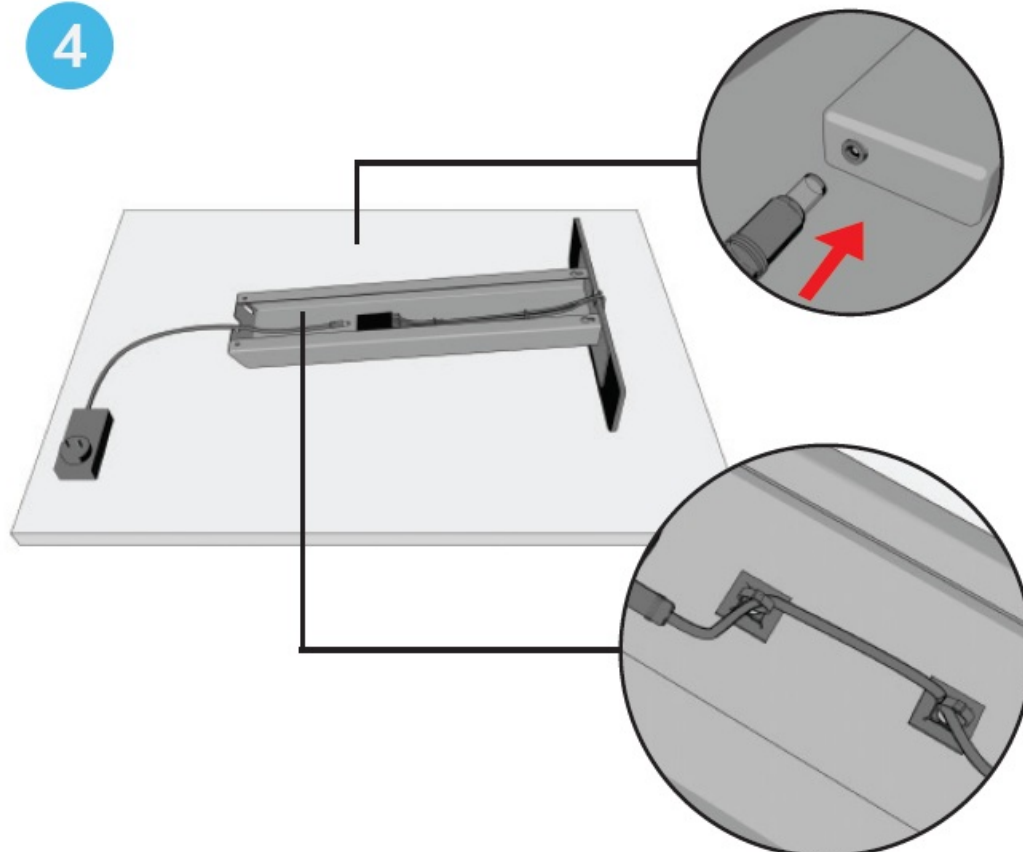
3. Drive mounting screws into the top two wall anchors. Do not drive them until they are flush against the wall. Leave a gap of approximately 1/8".

3



4. Set the charging station face down on a flat surface. Connect the power supply then secure the cord to the inside of the column using the supplied zip ties and pads.

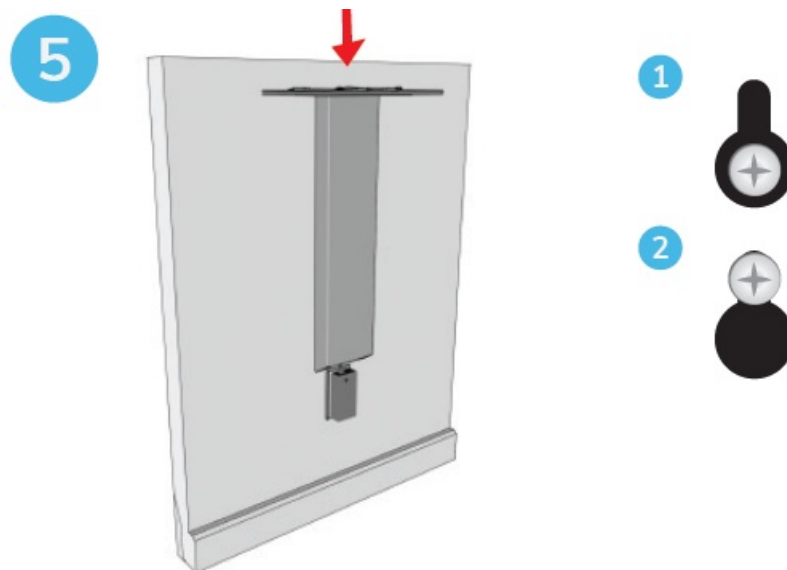
4



5. Align the keyholes on the top rear of the column to the mounting screws on the wall. Slide the unit down so the

screws sit snugly inside the keyholes, as shown. Once properly positioned, the mount holes at the bottom of the column should line up with the remaining 2 wall anchors. Once aligned, secure the charging station using the remaining mounting screws.


Once mounting is complete, plug the power supply into a wall outlet.



Need more info?

kwikboost.com • 800.676.4278 • support@kwikboost.com

Documents / Resources

	Kwikboost KB94018 Mini Charging Hub [pdf] User Guide KB94018 Mini Charging Hub, KB94018, Mini Charging Hub, Charging Hub, Hub
---	--

References

- [User Manual](#)

[Manuals+](#), [Privacy Policy](#)

This website is an independent publication and is neither affiliated with nor endorsed by any of the trademark owners. The "Bluetooth®" word mark and logos are registered trademarks owned by Bluetooth SIG, Inc. The "Wi-Fi®" word mark and logos are registered trademarks owned by the Wi-Fi Alliance. Any use of these marks on this website does not imply any affiliation with or endorsement.