



KVMSwitchTech ANI-16-4K60 16×16 HDMI Matrix Switcher with Smart EDID Management Instruction Manual

[Home](#) » [KVMSwitchTech](#) » KVMSwitchTech ANI-16-4K60 16×16 HDMI Matrix Switcher with Smart EDID Management Instruction Manual 

Contents

- [1 KVMSwitchTech ANI-16-4K60 16×16 HDMI Matrix Switcher with Smart EDID Management](#)
- [2 PACKAGE CONTENTS](#)
- [3 SAFETY INFORMATION](#)
- [4 INTRODUCTION](#)
- [5 FEATURES & SPECIFICATIONS](#)
- [6 FRONT & rear PANELS](#)
- [7 Remote Control](#)
- [8 ASCII Commands](#)
- [9 Web GUI](#)
- [10 CABLE DISCLAIMER](#)
- [11 TERMS AND CONDITIONS OF USE](#)
- [12 Documents / Resources](#)
 - [12.1 References](#)
- [13 Related Posts](#)



KVMSwitchTech ANI-16-4K60 16×16 HDMI Matrix Switcher with Smart EDID Management



PACKAGE CONTENTS

Before attempting to use this unit, please check the packaging and make sure the following items are contained in

the shipping carton:

- ANI-16-4K60 16×16 HDMI Matrix Switcher
- IR Remote Control
- Phoenix Connector
- 100~240V AC 50/60Hz Power Cable (IEC320 C13 to NEMA 5-15P)

SAFETY INFORMATION

1. To ensure the best results from this product, please read this manual and all other documentation before operating your equipment. Retain all documentation for future reference.
2. Follow all instructions printed on unit chassis for proper operation.
3. To reduce the risk of fire, do not spill water or other liquids into or on the unit, or operate the unit while standing in liquid.
4. Make sure power outlets conform to the power requirements listed on the back of the unit. Keep unit protected from rain, water and excessive moisture.
5. Do not attempt to clean the unit with chemical solvents or aerosol cleaners, as this may damage the unit. Dust with a clean dry cloth.
6. Do not use the unit if the electrical power cord is frayed or broken. The power supply cords should be routed so that they are not likely to be walked on or pinched by items placed upon or against them, paying particular attention to cords and plugs, convenience receptacles, and the point where they exit from the appliance.
7. Do not force switched or external connections in any way. They should all connect easily, without needing to be forced.
8. Always operate the unit with the AC ground wire connected to the electrical system ground. Precautions should be taken so that the means of grounding of a piece of equipment is not defeated.
9. AC voltage must be correct and the same as that printed on the rear of the unit. Damage caused by connection to improper AC voltage is not covered by any warranty.
10. Turn power off and disconnect unit from AC current before making connections.
11. Never hold a power switch in the "ON" position.
12. This unit should be installed in a cool dry place, away from sources of excessive heat, vibration, dust, moisture and cold. Do not use the unit near stoves, heat registers, radiators, or other heat producing devices.
13. Do not block fan intake or exhaust ports. Do not operate equipment on a surface or in an environment which may impede the normal flow of air around the unit, such as a bed, rug, carpet, or completely enclosed rack. If the unit is used in an extremely dusty or smoky environment, the unit should be periodically "blown free" of foreign dust and matter.
14. To reduce the risk of electric shock, do not remove the cover. There are no user serviceable parts inside. Refer all servicing to qualified service personnel. There are no user serviceable parts inside.
15. When moving the unit, disconnect input ports first, then remove the power cable; finally, disconnect the interconnecting cables to other devices.
16. Do not drive the inputs with a signal level greater than that required to drive equipment to full output.
17. The equipment power cord should be unplugged from the outlet when left unused for a long period of time.
18. Save the carton and packing material even if the equipment has arrived in good condition. Should you ever need to ship the unit, use only the original factory packing.
19. Service Information Equipment should be serviced by qualified service personnel when:

- **A.** The power supply cord or the plug has been damaged.
- **B.** Objects have fallen, or liquid has been spilled into the equipment.
- **C.** The equipment has been exposed to rain.
- **D.** The equipment does not appear to operate normally, or exhibits a marked change in performance.
- **E.** The equipment has been dropped, or the enclosure damaged.

INTRODUCTION

Dear Customer

Thank you for purchasing this product. For optimum performance and safety, please read these instructions carefully before connecting, operating or adjusting this product. Please keep this manual for future reference.

INTRODUCTION

The ANI-16-4K60 is a high performance HDMI Matrix Switcher. It can switch (16) HDMI HD sources to (16) HDMI HD display devices simultaneously. The OLED screen on the front panel will display the input and output port in real time. It supports a maximum resolution up to 4K60Hz YUV 4:2:0 and supports HDCP 2.2. Select smart EDID management via a PC with the Web GUI. Control provided by front-panel buttons, IR remote control, RS-232, LAN, and Web GUI. This product has a 3 year warranty.

SAFETY PRECAUTIONS

Please read all instructions before attempting to unpack, install or operate this equipment and before connecting the power supply. Please keep the following in mind as you unpack and install this equipment:• Always follow basic safety precautions to reduce the risk of fire, electrical shock and injury to persons.

- To prevent fire or shock hazard, do not expose the unit to rain, moisture or install this product near water.
- Never spill liquid of any kind on or into this product.
- Never push an object of any kind into this product through any openings or empty slots in the unit, as you may damage parts inside the unit.
- Do not attach the power supply cabling to building surfaces.
- Use only the supplied power supply unit (PSU). Do not use the PSU if it is damaged.
- Do not allow anything to rest on the power cabling or allow any weight to be placed upon it or any person walk on it.
- To protect the unit from overheating, do not block any vents or openings in the unit housing that provide ventilation and allow for sufficient space for air to circulate around the unit.

DISCLAIMERS

The information in this manual has been carefully checked and is believed to be accurate. We assume no responsibility for any infringements of patents or other rights of third parties which may result from its use. We assume no responsibility for any inaccuracies that may be contained in this document. We make no commitment to update or to keep current the information contained in this document. We reserve the right to make improvements to this document and/ or product at any time and without notice.

COPYRIGHT NOTICE

No part of this document may be reproduced, transmitted, transcribed, stored in a retrieval system, or any of its part translated into any language or computer file, in any form or by any means — electronic, mechanical, magnetic, optical, chemical, manual, or otherwise — without the express written permission and consent.

© Copyright 2020. All Rights Reserved. Version 2.0 SEPT 2020

TRADEMARK ACKNOWLEDGMENTS

All products or service names mentioned in this document may be trademarks of the companies with which they

are associated.

FEATURES & SPECIFICATIONS

FEATURES

- HDMI 2.0b (4K60Hz YUV 4:2:0), HDCP 2.2 / HDCP 1.4 and DVI 1.0 compliant
- Supports resolutions up to 4K2K@50/60Hz (YUV 4:2:0) for all HDMI ports
- Supports pass-through audio up to LPCM 7.1CH, Dolby TrueHD, Dolby Digital Plus and DTS HD Master Audio
- Supports HDR-10 and Dolby Vision
- Supports smart EDID management
- Supports front-panel button, IR remote control, RS-232, LAN and Web GUI control
- Retains settings during power cycle
- 1U rack mounted design with metal enclosure

SPECIFICATIONS

- **Inputs:** (16) HDMI Type A [19-pin female] / LAN [RJ45, Control] / RS-232 [3-pin Phoenix, Control]
- **Outputs:** (16) HDMI Type A [19-pin female] / OLED display screen
- **HDMI Compliance:** HDMI 2.0b
- **HDCP Compliance:** HDCP 2.2 and HDCP 1.4
- **Video Bandwidth:** 10.2Gbps
- **Video Resolutions:** 4K2K@50/60Hz YUV4:2:0, 4K2K@30Hz YCbCr / YUV 4:4:4, 1080p@60Hz YCbCr4:4:4 / 4:2:2
- **Color Depth:** 8/10/12-bit (1080p60Hz, YCbCr4:4:4) 8-bit (4K60Hz, YUV 4:2:0)
- **Color Space:** YCbCr 4:4:4 / 4:2:2, YUV4:2:0
- **HDMI Audio Formats:** LPCM 7.1CH, Dolby TrueHD, Dolby Digital Plus and DTS HD Master Audio
- **ESD Protection Human Body Model:**
 - ± 8kV (air-gap discharge)
 - ± 4kV (contact discharge)
- **Housing:** Metal Enclosure
- **Color:** Black
- **Dimensions (WxDxH):** 19" x 12 x 1.75 in (440x303x44.5mm) (*19in with rack mount bracket)
- **Weight:** 9.25 lb / 4.2kg
- **Power Supply:** 100~240V AC 50/60Hz
- **Power Consumption:** 31.3W
- **Operating Temperature:** 0°C ~ 40°C / 32°F ~ 104°F
- **Storage Temperature:** -20°C ~ 60°C / -4°F ~ 140°F
- **Relative Humidity:** 20~90% RH (non-condensing)

FRONT & rear PANELS

FRONT PANEL

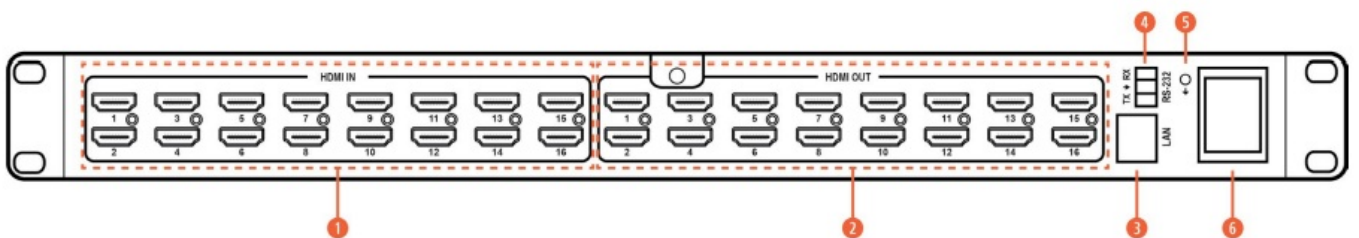


1. **OLED DISPLAY:** Displays current input/output port.
2. **IR WINDOW:** IR receiver window, receives IR remote control signal for this device only.
3. **LEFT/RIGHT/UP/DOWN/OK BUTTONS:** The product has power off remember function. After the power cycle, the OLED screen will display the input and output port of the last saved configuration.
 - **LEFT BUTTON:** The INPUT port on the OLED screen will flicker when you press the left button. Use the 'UP' or 'DOWN' buttons to select the previous or the next input source. Then press the 'OK' button to confirm.
 - **RIGHT BUTTON:** The OUTPUT port on the OLED screen will flicker when you press the right button. Use the 'UP' or 'DOWN' buttons to select the pervious or the next output display. Then press the 'OK' button to confirm.
 - **UP AND DOWN BUTTON:** 'UP' button is used to increase number and 'DOWN' button is used to decrease number.
4. **POWER BUTTON:** Pressing the button to power on the product and press 5 times to place in standby status.

NOTE: TURN ON/OFF THE HDCP:

- **TURN HDCP ON:** Press and hold the front panel "OK" button for 10 seconds. The front panel LED screen "ON" and flicker. At this time, you have turned ON the HDCP function and output HDCP will follow the input signal HDCP. The ANI-16-4K60 will reboot.
- **TURN HDCP OFF:** Press and hold the front panel "OK" button for 10 seconds. The front panel LED screen "OFF" and flicker. At this time, you have turned OFF the HDCP function and output HDCP will no longer follow the input signal HDCP. The ANI-16-4K60 will reboot.

REAR PANEL



1. **HDMI IN (1~16):** HDMI input port, connects to HDMI source devices with a HDMI cable.
2. **HDMI OUT (1~16):** HDMI output port, connects to HDMI display devices such as TVs or Monitors with a HDMI cable.
3. **LAN:** Connects to an active Ethernet link with a RJ-45 cable to control the unit.
4. **RS-232:** Connects to a PC or control system with a phoenix connector cable to control the unit.
5. **GND:** Connects the GND port to ground.
6. **AC POWER INPUT:** Connects AC power with an AC power cable.

Remote Control



- **POWER:** Power on or set the unit to standby status.
- **INPUT 0~9:** Select one input signal source.
NOTE: You must select two numbers when you select input signal source. For example, if you want to select input signal source 1, you need to press '0' button and then '1' button.
- **PTP BUTTON:** Press the PTP button and then select one output source in the 0~9 Output area. It will be a one-to-one output. For example, when you press the PTP button and then select the second output source. The second output port outputs signal from the second input source.
- **OUTPUT 0~9:** Select one output signal source.
NOTE: You must select two numbers when you select one output signal source. For example, if you want to select the first output signal source, you need to press '0' button and then '1' button.
- **ALL BUTTON:** Press this button to select all output signal source simultaneously. Press the PTP button and then press the 'All' button, all input and output signal sources will be output one-to-one. Press the first input source and then press 'All' button, the first input source will output to all output ports.

OPERATION INSTRUCTIONS:

- Select the input buttons and then select the output buttons to display the corresponding input signal source.
- When you use the remote control to select the input and output source, select one input source to many outputs, select the 'OUTPUT' port on the front panel OLED screen. Then press the 'OK' button to confirm. For example, select the first input source and then press the 'OK' button. You can select 01, 02, 13, 14, etc. output from the 'OUTPUT' port on the front panel OLED screen and then press the 'OK' button. At this time, the first

input source will output to 01, 02, 13,14, etc. port.

IR CODES

CUSTOM CODE: 08F7

POWER:	08F7	4DB2	INPUT 9:	08F7	55AA	OUTPUT 6:	08F7	44BB
INPUT 1:	08F7	08F7	INPUT 0:	08F7	57A8	OUTPUT 7:	08F7	50AF
INPUT 2:	08F7	48B7	INPUT PTP:	08F7	17E8	OUTPUT 8:	08F7	0EF1
INPUT 3:	08F7	4BB4	OUTPUT ALL:	08F7	53AC	OUTPUT 9:	08F7	13EC
INPUT 4:	08F7	43BC	OUTPUT 1:	08F7	40BF	OUTPUT 0:	08F7	12ED
INPUT 5:	08F7	0CF3	OUTPUT 2:	08F7	10EF			
INPUT 6:	08F7	19E6	OUTPUT 3:	08F7	11EE			
INPUT 7:	08F7	0FF0	OUTPUT 4:	08F7	52AD			
INPUT 8:	08F7	03FC	OUTPUT 5:	08F7	4FB0			

ASCII Commands

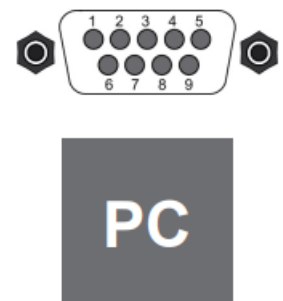
Serial port protocol

- **BAUD RATE:** 115200
- **IP PROTOCOL:**
 - **TCP/IP PORT:** 8000
 - **TELNET PORT:** 23
- **DATA BITS:** 8
- **STOP BITS:** 1
- **CHECK BIT:** 0

RS-232 CONFIGURATION

RS-232 cable is a straight thru cable and not null-modem

Definition	Pin		Pin	Definition
	1		1	DCD
TX	2		2	RX
RX	3		3	TX
	4		4	DTR
GND	5		5	GND
	6		6	DSR
	7		7	RTS
	8		8	CTS
	9		9	RI



POWER				
COMMAND CODE	DESCRIPTION	EXAMPLE	FEEDBACK	DEFAULT SETTING
s power on!	POWER ON THE UNIT	s power on! #power 0	POWER ON POWER 0	POWER IS ON
s power off!	POWER OFF THE UNIT	s power off!	POWER OFF	
r power!	GET CURRENT POWER STATE	r power!	POWER ON	
s reboot!	REBOOT THE UNIT	s reboot!		
SYSTEM SETUP				
COMMAND CODE	DESCRIPTION	EXAMPLE	FEEDBACK	DEFAULT SETTING
r login!	QUERY PASSWORDS FOR BOTH ACCOUNTS	r login!		
s beep on!	ENABLE BUZZER FUNCTION	s beep on!	BEEP ON	BEEP ON
s beep off!	DISABLE BUZZER FUNCTION	s beep off!	BEEP OFF	
r beep!	GET THE STATUS OF THE BUZZER	r beep!	BEEP ON	
s factory reset!	RESTORE TO FACTORY SETTINGS	s factory reset!	FACTORY RESET	
r version!	QUERY SOFTWARE VERSION	r version!	V1.16	
r status!	QUERY THE STATE OF THE UNIT	r status!	"POWER ON V1.16 ANI-16-4K60 BEEP ON/OFF LOCK ON/OFF I P MODE MAC 00-00-00-00-00-00 00-00 PORT 8000"	

s save x!	SAVE SWITCH ROUTING SCENARIO TO GROUP X, X=1~10	s save 1!	SAVE TO GROUP 1	
s recall x!	RECALL SAVED GROUP X SCENARIO, X=1~10	s recall 1!	RECALL FROM GROUP 1	

s clear x!	CLEAR STORED GROUP X SCENARIO, X=1~10	s clear 1!	CLEAR GROUP 1	
ROUTING SETUP				
COMMAND CODE	DESCRIPTION	EXAMPLE	FEEDBACK	DEFAULT SETTING
s x av y!	SET INPUT X TO OUTPUT Y, X=1~16, Y=16	s 1 av 2!	AV 1 -> 2	
s x all!	SWITCH INPUT X TO ALL OUTPUTS, X=1~16	s 1 all!	1 TO ALL	1 TO ALL
s ptp!	SWITCH INPUT 1 TO OUTPUT 1, INPUT 2 TO OUTPUT 2 ...	s ptp!	PTP	
s all off!	CLOSE ALL OUTPUTS	s all off!	ALL OUT OFF	
s x off!	CLOSE OUTPUT X , X=1~16	s 1 off!	OUT 1 OFF	
s all on!	OPEN ALL OUTPUTS	s all on!	ALL OUT ON	
s x on!	OPEN OUTPUT X , X=1~16	s 1 on!	OUT 1 ON	
r out y!	GET OUTPUT PORT ROUTE TO WHICH INPUT PORT, Y=1~16	r out 2!	AV 1 ->2	
r all out!	GET ALL OUTPUT PORTS ROUTING STATUS	r all out!	“AV X -> 1, AV X -> 2... AV X -> 1, AV X -> 16”	
r link in x!	GET INPUT PORT HDMI STATUS, X=1~16	r link in 1!	HDMI IN1: CONNECT	
r link in all!	GET ALL INPUT PORTS HDMI STATUS	r link in all!	“HDMI IN1: CONNECT HDMI IN2: CONNECT ... HDMI IN15: CONNECT HDMI IN16: CONNECT”	
r link out y!	GET OUTPUT PORT HDMI STATUS, Y=1~16	r link out 1!	HDMI OUT1: CONNECT	

r link out all!	GET ALL OUTPUT PORTS HDMI STATUS	r link out all!	"HDMI OUT1: CONNECT HDMI OUT2: CONNECT ... HDMI OUT15: CONNECT HDMI OUT16:CONNECT CT"	
-----------------	----------------------------------	-----------------	--	--

EDID SETUP

COMMAND CODE	DESCRIPTION	EXAMPLE	FEEDBACK	DEFAULT SETTING
s edid x c y!	COPY OUTPUT Y EDID TO INPUT X PORT, X=1~16,Y=1~16	s edid 1 c 2!	COPY EDID FROM OUTPUT 2 TO INPUT 1	
s edid x d y!	SET INPUT X EDID TO INTERNAL EDID Y, X=1~16, Y=1~15	s edid 1 d 15!	USE DEFAULT EDID 15 TO INPUT 1	
s edid all c y!	COPY OUTPUT Y EDID TO ALL INPUT PORTS, Y=1~16	s edid all c 1!	COPY EDID FROM OUTPUT1 TO ALL INPUTS	
s edid all d y !	SET ALL INPUT PORTS EDID TO INTERNAL EDID Y, X=1~16, Y=1~15	s edid all d 15!	USE DEFAULT EDID 15 TO ALL INPUTS	
s edid default!	"SET DEFAULT EDID TO ALL INPUT PORTS (DEFAULT EDID IS 1080P, STEREO AUDIO 2.0)"	s edid default!	EDID DEFAULT	
r display edid x!	GET EDID DATA OF TV BE CONNECTED TO HDMI OUTPUT PORT, X=1~16	r display edid 1!	EDID: 00 FF FF FF FF FF FF 00	

r edid x!	GET INPUT PORT EDID STATUS, X=1~16	r edid 1!	IN1: 4K2K60, STEREO AUDIO 2.0	
-----------	------------------------------------	-----------	----------------------------------	--

r all edid!	GET ALL INPUT PORTS EDID STATUS	r all edid!	"IN1: 4K2K60, STEREO AUDIO 2.0 IN2: 4K2K60, STEREO AUDIO 2.0 ... IN15: 4K2K60, STEREO AUDIO 2.0 IN16: 4K2K60, STEREO AUDIO 2.0"	"IN1: 1080P, STEREO AUDIO 2.0 IN2: 1080P, STEREO AUDIO 2.0 ... IN15: 1080P, STEREO AUDIO 2.0 IN16: 1080P, STEREO AUDIO 2.0"
-------------	---------------------------------	-------------	---	---

COMMAND CODE	DESCRIPTION	EXAMPLE	FEEDBACK	DEFAULT SETTING
s all hdcp on!	ENABLE ALL OUTPUT PORTS HDCP	s all hdcp on!	ALL OUT HDCP ON	
s all hdcp off!	DISABLE ALL OUTPUT PORTS HDCP	s all hdcp off!	ALL OUT HDCP OFF	

COMMAND CODE	DESCRIPTION	EXAMPLE	FEEDBACK	DEFAULT SETTING
s dhcp off!	SET NETWORK MODULE TO STATIC IP	s dhcp off!	IP MODE STATIC	
s dhcp on!	SET NETWORK MODULE TO DHCP	s dhcp on!	IP MODE DHCP	IP MODE DHCP
r dhcp!	GET DHCP STATUS OF THE NETWORK MODULE	r dhcp!	IP MODE DHCP	
s ip addr xxx.xxx.xxx!	SET THE IP ADDRESS	s ip addr 192.168.1.100!	192.168.1.100	
r ip addr!	GET THE IP ADDRESS	r ip addr!	192.168.1.100	
s subnet xxx.xxx.xxx!	SET THE SUBNET MASK	s subnet 255.255.255.0!	255.255.255.0	
r subnet!	GET THE SUBNET MASK	r subnet!	255.255.255.0	
s gateway xxx.xxx.xxx!	SET THE GATEWAY	s gateway 192.168.1.1!	192.168.1.1	
r gateway!	GET THE GATEWAY	r gateway!	192.168.1.1	

s port x!	SET NETWORK PORT NUMBER	s port 8000!	8000	8000
r port!	GET NETWORK PORT NUMBER	r port!	8000	
r mac addr!	GET THE MAC ADDRESS	r mac addr!	E8-6A-64-42-BA-5D	

Web GUI

Web GUI

The ANI-16-4K60 can be controlled via the built-in web-GUI or external software running on a PC. You must know the current Matrix IP address to use the Web-GUI. You can use any 3rd party IP scanning software or use our PC Software to discover the IP address. The default network setting is DHCP. The ANI-16-4K60 supports Static IP settings and can easily be configured through the Web-GUI or PC software. See “PC Software” further in this document.

1. **STEP 1:** Input the IP address into the PC browser to enter Web GUI page.



2. When you enter the IP address of the ANI-16-4K60 into a browser, you will be greeted with the following authentication page. There are two levels of Web-GUI login. Admin gives permission to all settings, while User is only allowed to change cross points. Select either “Admin” or “User” (Figure 2). The default password for Admin is “admin” and the default password for User is “user”. You will enter the Web-GUI page after successful authentication.

 A screenshot of the Matrix web-GUI login page. The page has a light gray header with the word 'Matrix' in blue. Below the header, there is a 'User' section with a dropdown menu showing 'Please select'. Below the dropdown is a 'Password' section with a text input field. At the bottom, there is a blue 'Sign In' button and a 'Change Password' link.

FIGURE 1

 A screenshot of the Matrix web-GUI user selection page. It shows a 'User' dropdown menu with 'Admin' and 'User' as options. Below the dropdown is a text input field.

FIGURE 2

3. You can set a new password. To change an account password, first select Admin or User followed by clicking on the “Change Password” button, you will enter the following page to change the password (Figure 3).

User :

Please select

Old password :

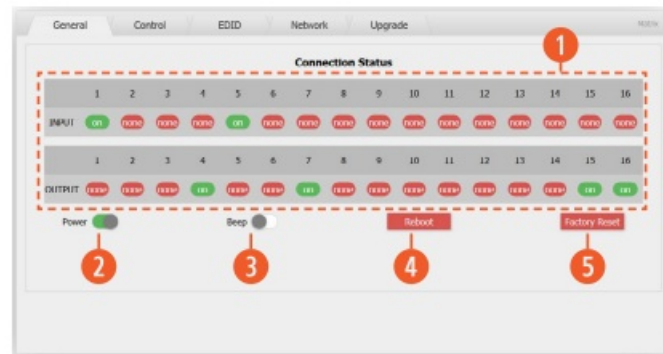
New password :

Confirm password :

Save

FIGURE 3

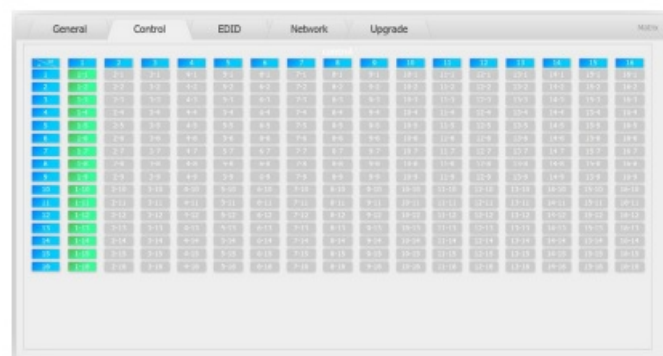
GENERAL PAGE



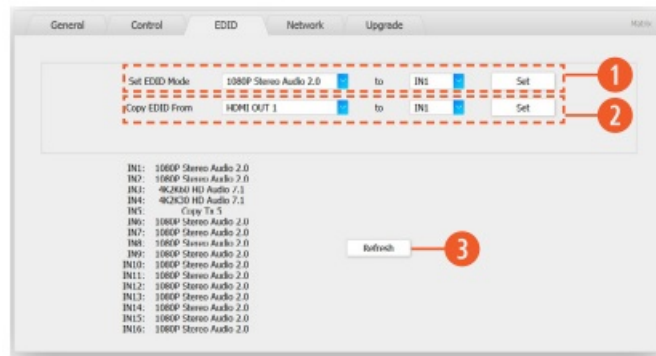
1. Display current input and output status.
2. Power switch. The Matrix will work when you open this switch. Otherwise, the Matrix will be in standby.
3. Beep switch. Open this switch, pressing the Matrix on-panel button will now make a sound. Close this switch to mute.
4. Clicking this button will reboot the device.
5. Clicking this button will factory reset.

CONTROL PAGE

CONTROL: Select the input and output source.



EDID PAGE

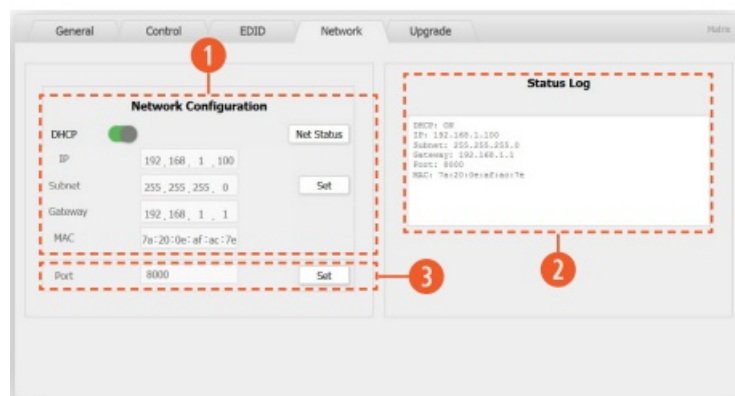


1. Select EDID mode for the input source, then click “Set” button.
2. Copy EDID from the output display to the input source, then click “Set” button.
3. Refresh currently the input source EDID status.

The following is the EDID schema table.

EDID Description	EDID Description	EDID Description
1080p, Stereo Audio 2.0	1080i, HD Audio 7.1	4K2K30, Dolby/DTS 5.1
1080p, Dolby/DTS 5.1	3D, Stereo Audio 2.0	4K2K30, HD Audio 7.1
1080p, HD Audio 7.1	3D, Dolby/DTS 5.1	4K2K60, Stereo Audio 2.0
1080i, Stereo Audio 2.0	3D, Dolby/DTS 5.1	4K2K60, Dolby/DTS 5.1
1080i, Dolby/DTS 5.1	4K2K30, Stereo Audio 2.0	4K2K60, HD Audio 7.1

NETWORK PAGE



1. NETWORK CONFIGURATION:

• IN DHCP OPEN STATUS:

HDCP Switch: Obtain the network configuration information, including the IP address, Subnet, Gateway and MAC. Then click the “Set” button to save DHCP status.

• IN DHCP CLOSED STATUS:

HDCP Switch: If the DHCP switch has been closed, the user can set the IP, Subnet, Gateway and Mac address. Click the “Set” button to save current status information.

NOTE: If user has set a new IP address and clicked the “Set” button. The is IP address changed.

Net Status Button: Click this button to refresh the current network configuration information to display in the Status Log.

2. **STATUS LOG:** Display the Net configuration information.

3. **PORT BUTTON:** Set the value of the LAN port.

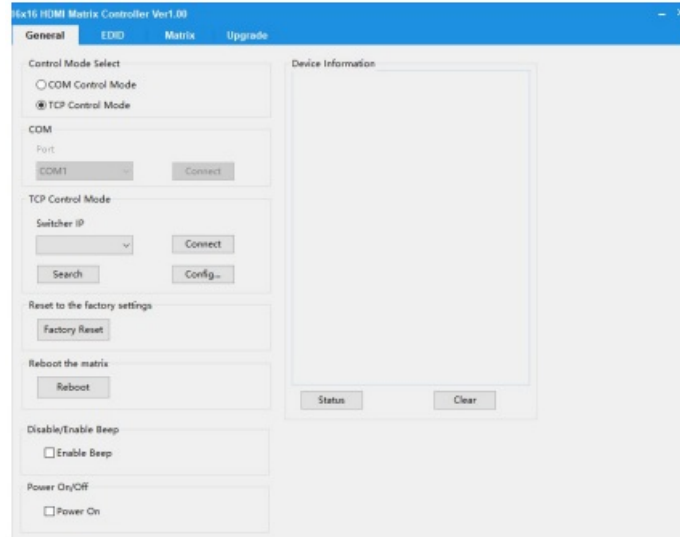
UPGRADE PAGE



- **UPGRADE:** Select upgrade file. The file type will have extension name '.bin'. Click 'Upgrade' button. The progress counter will go from 0% – 100%, and the ANI-16-4K60 will reboot.

PC SOFTWARE (OPTIONAL)

The ANI-16-4K60 supports control via the built-in web-GUI or external software running on a PC. You can also use the software to determine the IP address of the ANI-16-4K60. The software can be downloaded from the product page off our website “ANI-16-4K60 PC Software.exe” The software is a standalone .EXE file requiring no installation. Download the file to your hard drive and double-click the file name to start the program.



Ex16 HDMI Matrix Controller Ver1.00

GeneralEDIDMatrixUpgrade

Manual Mode

Set EDID Mode

1080p,Stereo Audio 2.C

to

IN1

Set

Copy EDID From

HDMI OUT1

to

IN1

Set

Open EDID

to

IN1

Set

Input EDID List

IN1: Default EDID

IN2: Default EDID

IN3: Default EDID

IN4: Default EDID

IN5: Default EDID

IN6: Default EDID

IN7: Default EDID

IN8: Default EDID

IN9: Default EDID

IN10: Default EDID

IN11: Default EDID

IN12: Default EDID

IN13: Default EDID

IN14: Default EDID

IN15: Default EDID

IN16: Default EDID

Status

Ex16 HDMI Matrix Controller Ver1.00

GeneralEDIDMatrixUpgrade

OUTPUT 1

1

IN1 IN2 IN3 IN4

IN5 IN6 IN7 IN8

IN9 IN10 IN11 IN12

IN13 IN14 IN15 IN16

OUTPUT 2

1

IN1 IN2 IN3 IN4

IN5 IN6 IN7 IN8

IN9 IN10 IN11 IN12

IN13 IN14 IN15 IN16

OUTPUT 3

1

IN1 IN2 IN3 IN4

IN5 IN6 IN7 IN8

IN9 IN10 IN11 IN12

IN13 IN14 IN15 IN16

OUTPUT 4

1

IN1 IN2 IN3 IN4

IN5 IN6 IN7 IN8

IN9 IN10 IN11 IN12

IN13 IN14 IN15 IN16

OUTPUT 5

1

IN1 IN2 IN3 IN4

IN5 IN6 IN7 IN8

IN9 IN10 IN11 IN12

IN13 IN14 IN15 IN16

OUTPUT 6

1

IN1 IN2 IN3 IN4

IN5 IN6 IN7 IN8

IN9 IN10 IN11 IN12

IN13 IN14 IN15 IN16

OUTPUT 7

1

IN1 IN2 IN3 IN4

IN5 IN6 IN7 IN8

IN9 IN10 IN11 IN12

IN13 IN14 IN15 IN16

OUTPUT 8

1

IN1 IN2 IN3 IN4

IN5 IN6 IN7 IN8

IN9 IN10 IN11 IN12

IN13 IN14 IN15 IN16

OUTPUT 9

1

IN1 IN2 IN3 IN4

IN5 IN6 IN7 IN8

IN9 IN10 IN11 IN12

IN13 IN14 IN15 IN16

OUTPUT 10

1

IN1 IN2 IN3 IN4

IN5 IN6 IN7 IN8

IN9 IN10 IN11 IN12

IN13 IN14 IN15 IN16

OUTPUT 11

1

IN1 IN2 IN3 IN4

IN5 IN6 IN7 IN8

IN9 IN10 IN11 IN12

IN13 IN14 IN15 IN16

OUTPUT 12

1

IN1 IN2 IN3 IN4

IN5 IN6 IN7 IN8

IN9 IN10 IN11 IN12

IN13 IN14 IN15 IN16

OUTPUT 13

1

IN1 IN2 IN3 IN4

IN5 IN6 IN7 IN8

IN9 IN10 IN11 IN12

IN13 IN14 IN15 IN16

OUTPUT 14

1

IN1 IN2 IN3 IN4

IN5 IN6 IN7 IN8

IN9 IN10 IN11 IN12

IN13 IN14 IN15 IN16

OUTPUT 15

1

IN1 IN2 IN3 IN4

IN5 IN6 IN7 IN8

IN9 IN10 IN11 IN12

IN13 IN14 IN15 IN16

OUTPUT 16

1

IN1 IN2 IN3 IN4

IN5 IN6 IN7 IN8

IN9 IN10 IN11 IN12

IN13 IN14 IN15 IN16

OUTPUT ALL

all

IN1 IN2 IN3 IN4

IN5 IN6 IN7 IN8

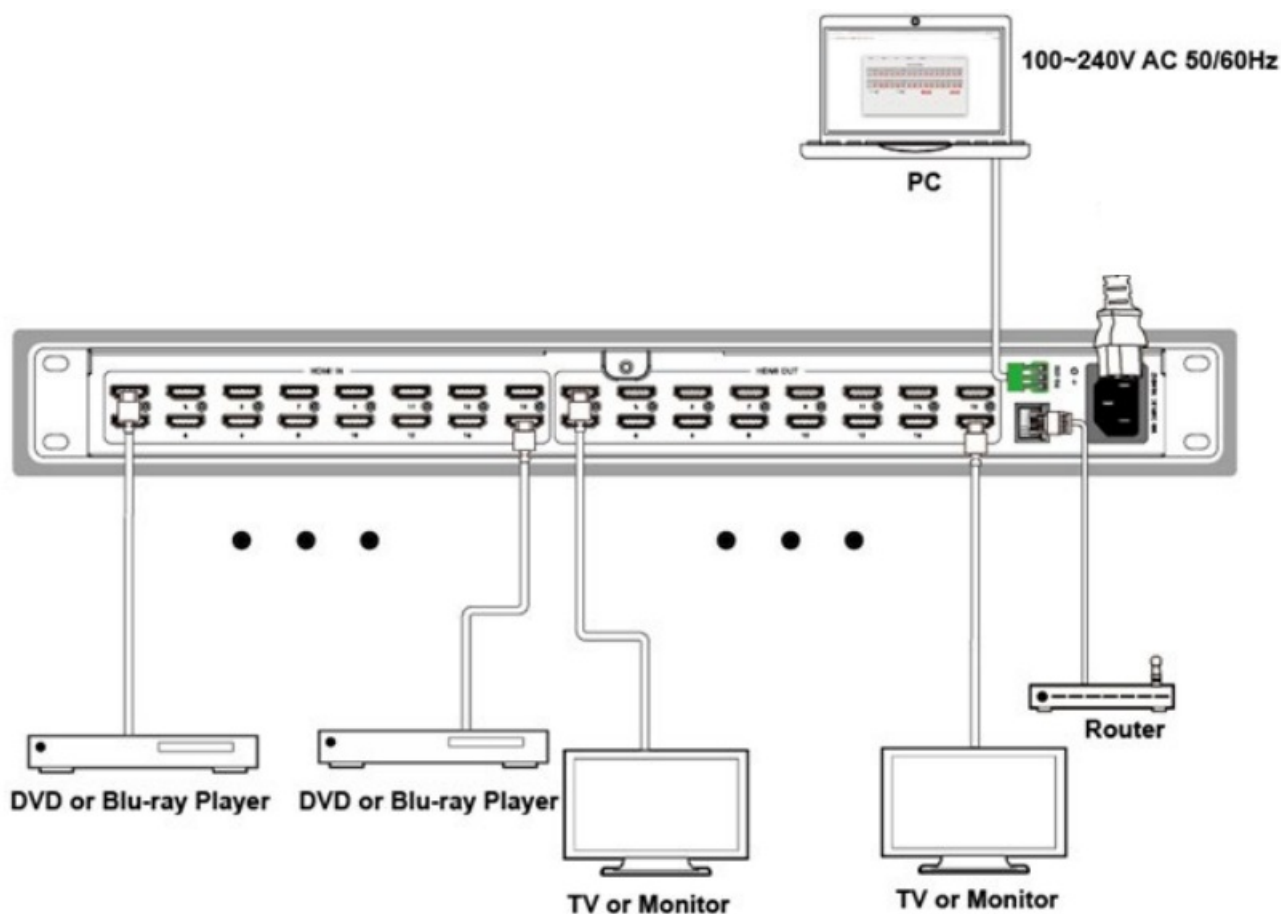
IN9 IN10 IN11 IN12

IN13 IN14 IN15 IN16

PTP

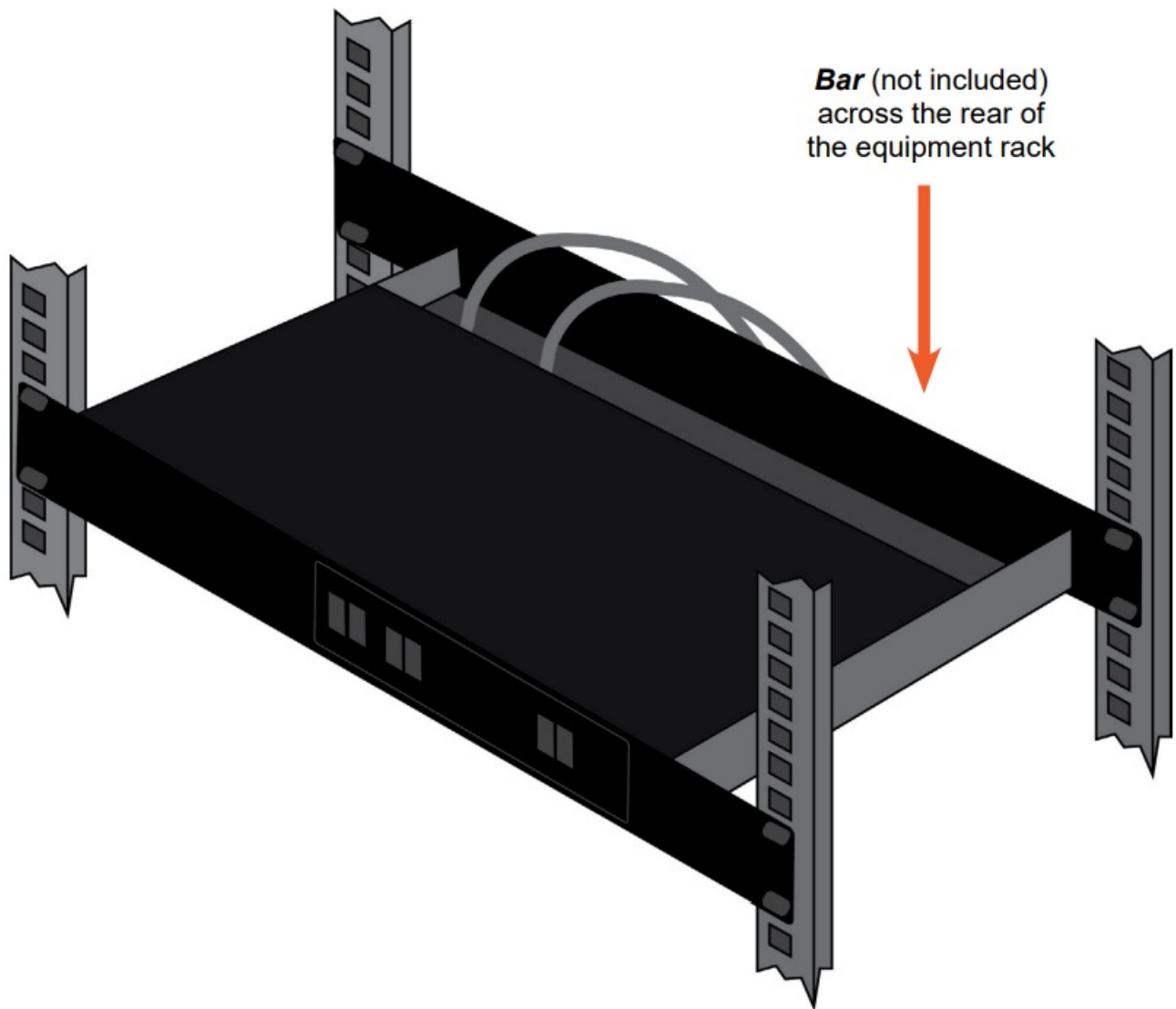
PTP

Application Example



CABLE DISCLAIMER

It is advised to secure all HDMI cables as to remove stress when connecting to the matrix. Secure HDMI cables either using a cable tray (not included) or a bar (not included) across the rear of the equipment rack. Cables under stress can damage the I/O ports and WILL NOT be covered under warranty.



TERMS AND CONDITIONS OF USE

PLEASE READ THE FOLLOWING TERMS AND CONDITIONS CAREFULLY BEFORE USING THIS HARDWARE, COMPONENTS AND SOFTWARE PROVIDED BY, THROUGH OR UNDER A-NeuVideo, INC (COLLECTIVELY, THE "PRODUCT"). By using installing or using the Product, you unconditionally signify your agreement to these Terms and Conditions. If you do not agree to these Terms and Conditions, do not use the Product and return the Product to A-NeuVideo, Inc. at the return address set forth on the Product's packing label at your expense. A-NeuVideo, Inc. may modify these Terms and Conditions at anytime, without notice to you.

RESTRICTIONS ON USE OF THE PRODUCT

It is your responsibility to read and understand the installation and operation instructions, both verbal and in writing, provided to you with respect to the Product. You are authorized to use the Product solely in connection with such instructions. Any use of the Product not in accordance with such instructions shall void any warranty pertaining to the Product. Any and all damages that may occur in the use of the Product that is not strictly in accordance with such instructions shall be borne by you and you agree to indemnify and hold harmless A-NeuVideo, Inc. from and against any such damage. The Product is protected by certain intellectual property rights owned by or licensed to A-NeuVideo. Any intellectual property rights pertaining to the Product are licensed to you by A-NeuVideo, Inc. and/or its affiliates, including any manufacturers or distributors of the Product (collectively, "A-NeuVideo") for your personal use only, provided that you do not change or delete any proprietary notices that may be provided with respect to the Product. The Product is sold to you and any use of any associated intellectual property is deemed to be licensed to you by A-NeuVideo for your personal use only. A-NeuVideo does not transfer either the title or the intellectual property rights to the Product and A-NeuVideo retains full and complete title to the intellectual property rights therein. All trademarks and logos are owned by A-NeuVideo or its licensors and providers of the Product, and you may not copy or use them in any manner without the prior written consent of A-NeuVideo, which consent may be withheld at the sole discretion of A-NeuVideo. The functionality and usability of

the Product is controlled by A-NeuVideo, Inc. from its offices within the State of Texas, United States of America. A-NeuVideo makes no representation that materials pertaining to the Product are appropriate or available for use in other locations other than the shipping address you provided with respect thereto. You are advised that the Product may be subject to U.S. export controls.


DISCLAIMERS AND LIMITATION OF LIABILITY

A-NeuVideo may change or modify the Product at any time, from time to time. THE PRODUCT IS PROVIDED “AS IS” AND WITHOUT WARRANTIES OF ANY KIND EITHER EXPRESS OR IMPLIED. A-NEUVIDEO DOES NOT WARRANT OR MAKE ANY REPRESENTATIONS REGARDING THE USE OR THE RESULTS OF THE USE OF THE PRODUCT’S CORRECTNESS, ACCURACY, RELIABILITY, OR OTHERWISE. A-NeuVideo has no duty or policy to update any information or statements pertaining to the Product and, therefore, such information or statements should not be relied upon as being current as of the date you use the Product. Moreover, any portion of the materials pertaining to the Product may include technical inaccuracies or typographical errors. Changes may be made from time to time without notice with respect to the Product.

TO THE FULLEST EXTENT PERMISSIBLE PURSUANT TO APPLICABLE LAW, A-NEUVIDEO DISCLAIMS ALL WARRANTIES, EXPRESS OR IMPLIED, INCLUDING, BUT NOT LIMITED TO IMPLIED WARRANTIES OF MERCHANTABILITY, FITNESS FOR A PARTICULAR PURPOSE AND NON-INFRINGEMENT. A-NEUVIDEO DOES NOT WARRANT THE ACCURACY, COMPLETENESS OR USEFULNESS OF ANY INFORMATION WITH RESPECT TO THE PRODUCT. A-NEUVIDEO DOES NOT WARRANT THAT THE FUNCTIONS PERTAINING TO THE PRODUCT WILL BE ERROR-FREE, THAT DEFECTS WITH RESPECT TO THE PRODUCT WILL BE CORRECTED, OR THAT THE MATERIALS PERTAINING THERETO ARE FREE OF DEFECTS OR OTHER HARMFUL COMPONENTS. A-NEUVIDEO WILL USE ITS REASONABLE EFFORTS TO CORRECT ANY DEFECTS IN THE PRODUCT UPON TIMELY WRITTEN NOTICE FROM YOU NOT TO EXCEED 10 BUSINESS DAYS AFTER RECEIPT BY YOU OF THE PRODUCT, BUT YOU (AND NOT A-NEUVIDEO) ASSUME THE ENTIRE COST OF ALL NECESSARY SERVICING, REPAIR AND CORRECTION THAT WAS CAUSED BY YOU UNLESS OTHERWISE AGREED TO IN A SEPARATE WRITING BY A-NEUVIDEO.

UNDER NO CIRCUMSTANCES, INCLUDING, BUT NOT LIMITED TO, NEGLIGENCE, SHALL A-NEUVIDEO BE LIABLE FOR ANY SPECIAL OR CONSEQUENTIAL DAMAGES THAT RESULT FROM THE USE OF, OR THE INABILITY TO USE THE PRODUCT IN ACCORDANCE WITH ITS SPECIFICATIONS, EVEN IF A-NEUVIDEO OR ITS REPRESENTATIVES HAVE BEEN ADVISED OF THE POSSIBILITY OF SUCH DAMAGES. IN NO EVENT SHALL A-NEUVIDEO’S TOTAL LIABILITY TO YOU FROM ALL DAMAGES, LOSSES, AND CAUSES OF ACTION (WHETHER IN CONTRACT, OR OTHERWISE) EXCEED THE AMOUNT YOU PAID TO A-NEUVIDEO, IF ANY, FOR THE PRODUCT.

Documents / Resources

	<p><u>KVMSwitchTech ANI-16-4K60 16x16 HDMI Matrix Switcher with Smart EDID Management</u> [pdf] Instruction Manual ANI-16-4K60 16x16 HDMI Matrix Switcher with Smart EDID Management, ANI-16-4K60 16x16, HDMI Matrix Switcher with Smart EDID Management, Smart EDID Management, EDID Management, Management</p>
---	--

References

-  a-neuvideo.com

