



kvm-tec USB Mouse Driver Installation Guide

[Home](#) » [kvm-tec](#) » kvm-tec USB Mouse Driver Installation Guide 

Contents

- [1 kvm-tec USB Mouse Driver](#)
- [2 Mouse driver installation](#)
- [3 Documents / Resources](#)
- [4 Related Posts](#)

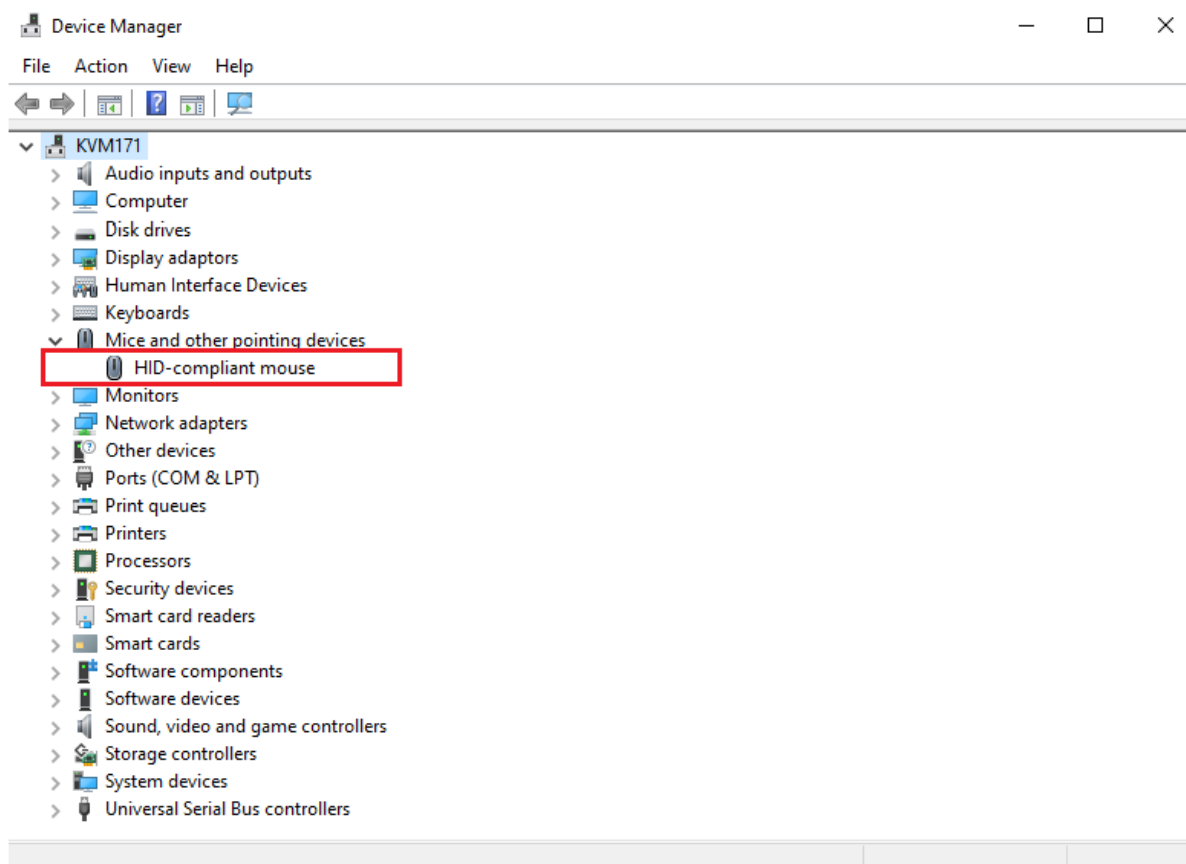


kvm-tec USB Mouse Driver

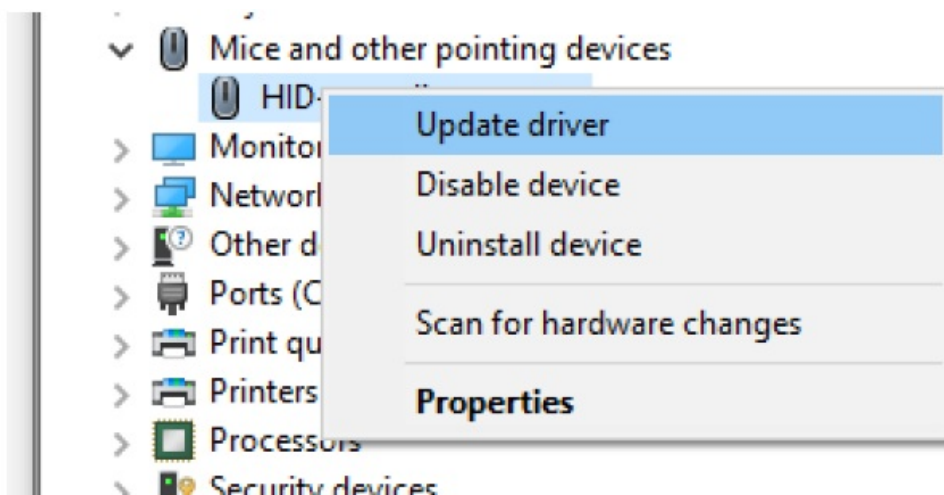


Mouse driver installation

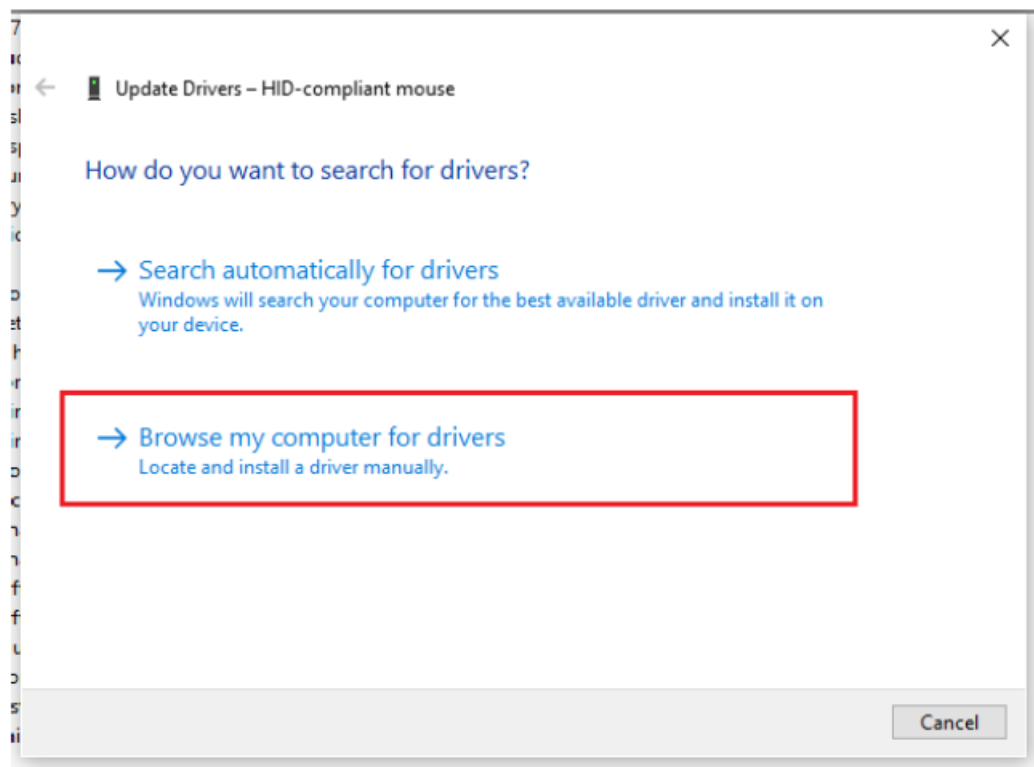
1. Open Device Manager
2. Select the required Mouse to use from this list



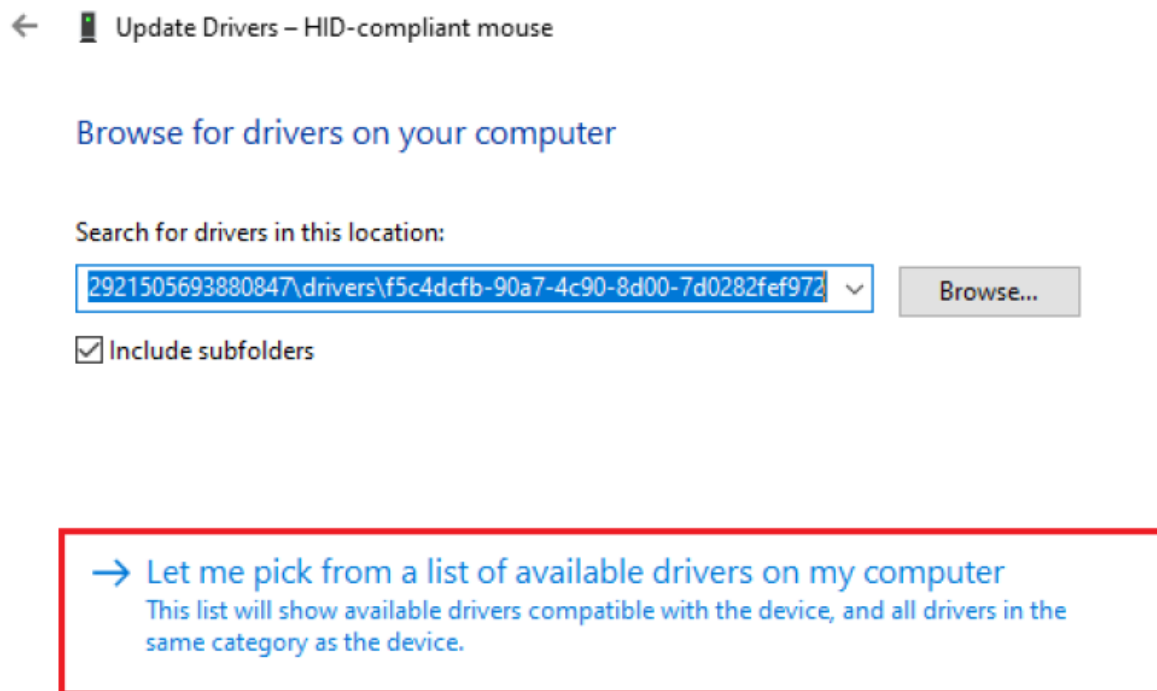
3. Right click then choose update driver



4. Select "Browse my computer for drivers"



5. Select "Let me pick from a list of available drivers on my computer"



6. Select "Have Disk"

Select the device driver you want to install for this hardware.



Select the manufacturer and model of your hardware device and then click Next. If you have a disk that contains the driver that you want to install, click Have Disk.

☒ Show compatible hardware

Model

HID-compliant device

HID-compliant mouse



This driver is digitally signed.

[Tell me why driver signing is important](#)

Have Disk...

Next

Cancel

7. Select "Browse"

Select the device driver you want to install for this hardware.



Select the manufacturer and model of your hardware device and then click Next. If you have a disk that contains the driver that you want to install, click Have Disk.

☒ Show compatible hardware

Model

HID-compliant device

HID-compliant mouse



This driver is digitally signed.

[Tell me why driver signing is important](#)

Install From Disk



Insert the manufacturer's installation disk, then make sure that the correct drive is selected below.

OK

Cancel

Copy manufacturer's files from:

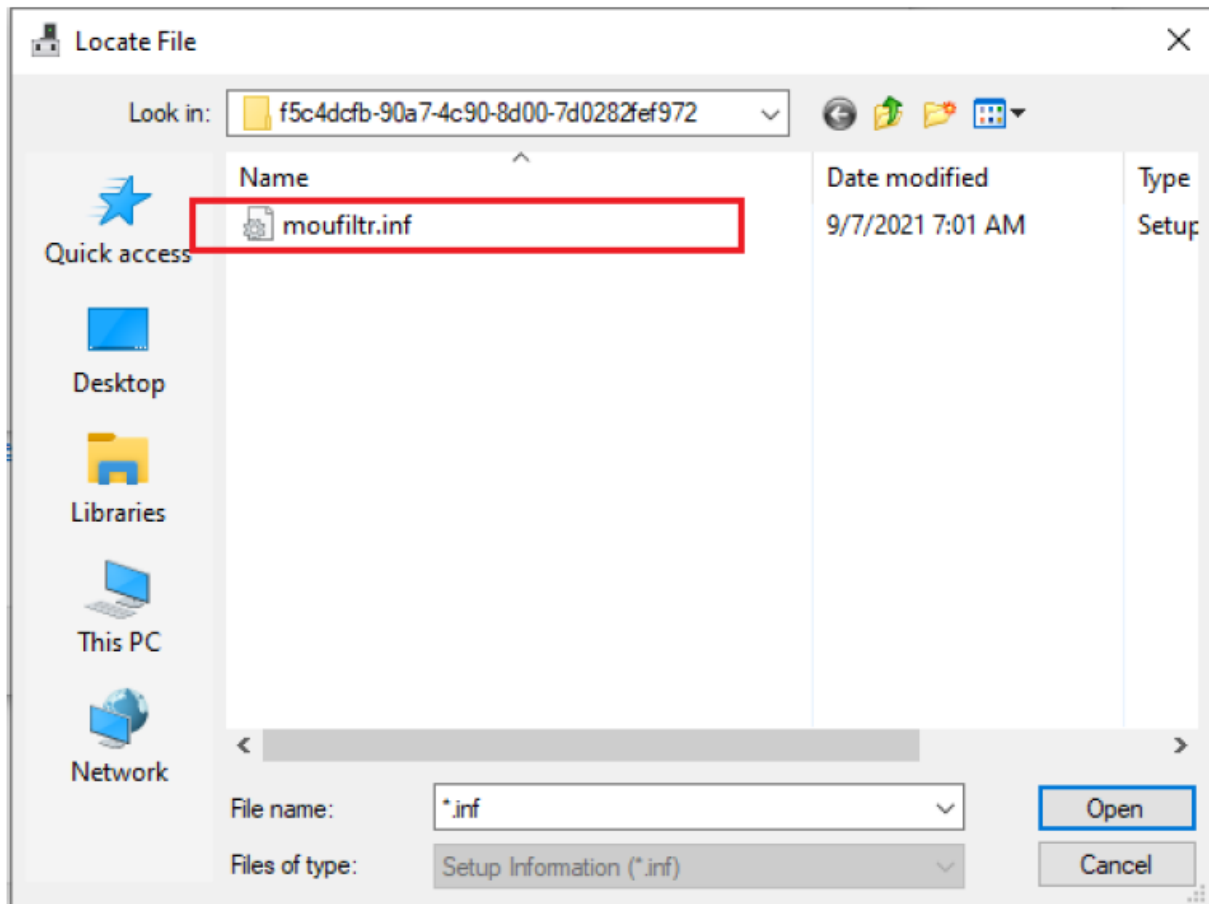
A:\

Browse...

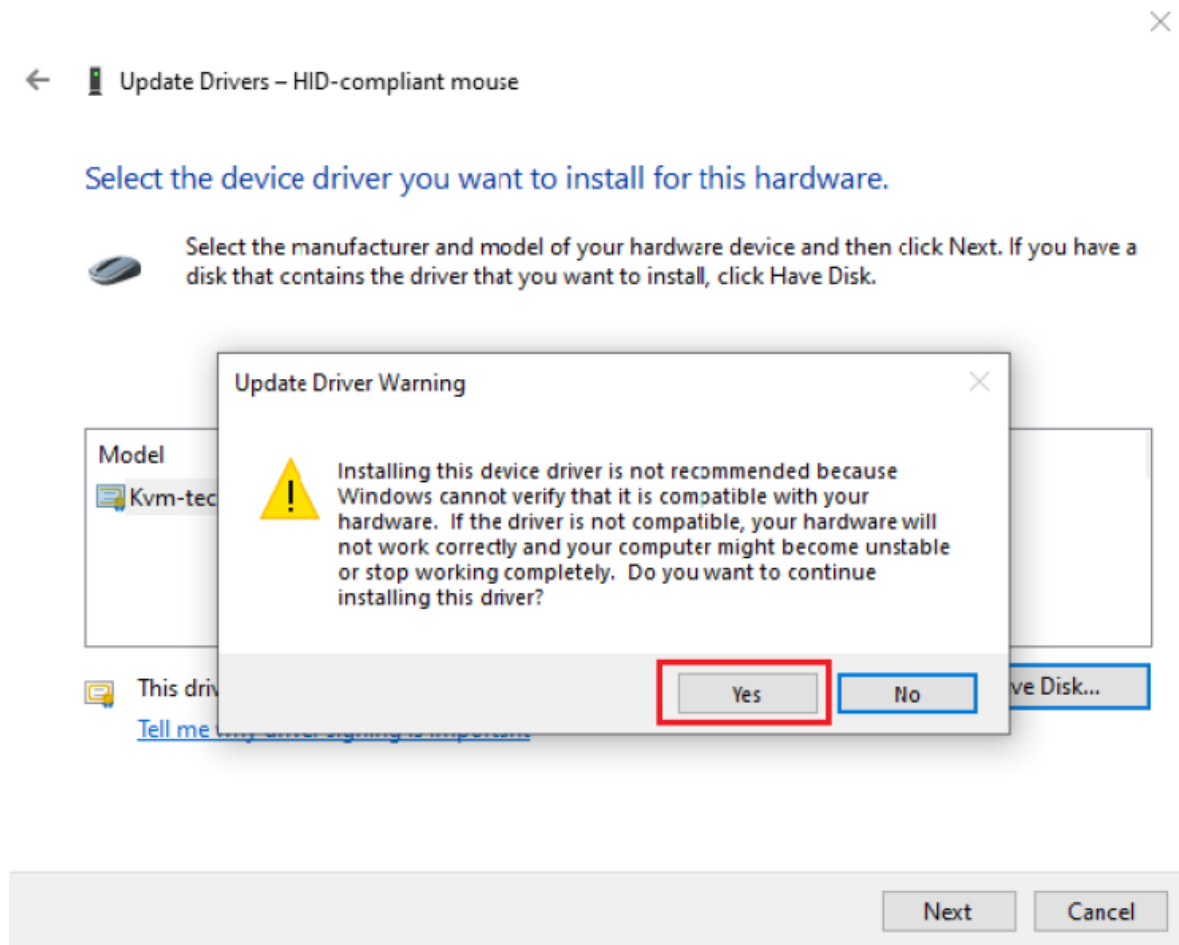
Next

Cancel

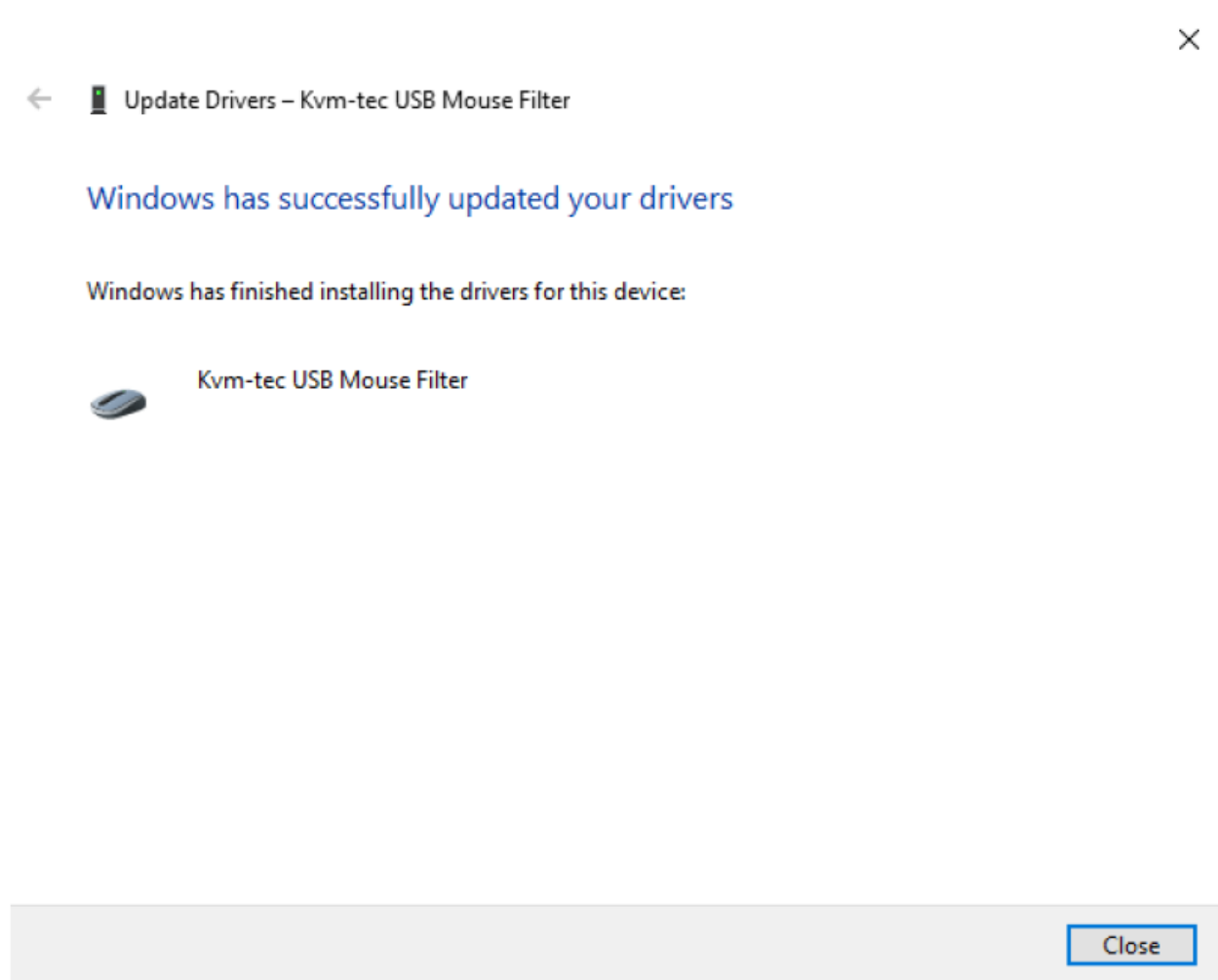
8. Browse to the driver folder and select the “moufiltr.ini” file




9. A warning will pop up, just select “Yes”



10. A confirmation message will be shown that the driver is installed



Documents / Resources

	kvm-tec USB Mouse Driver [pdf] Installation Guide USB Mouse Driver, Mouse Driver, Driver
---	---