

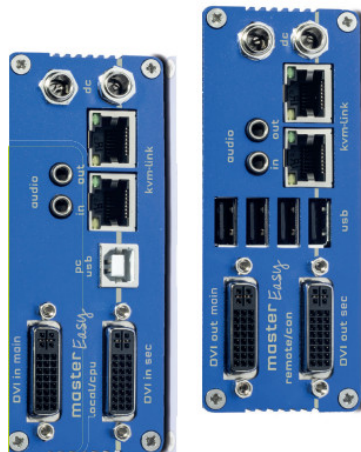


kvm-tec KT-8122 Full HD KVM Extender Over IP Instruction Manual

[Home](#) » [kvm-tec](#) » kvm-tec KT-8122 Full HD KVM Extender Over IP Instruction Manual 



Tune in the easy KVM World KT-8122 Full HD KVM Extender Over IP Instruction Manual



Contents

- 1 KT-8122 Full HD KVM Extender Over IP
- 2 Quick Installation masterEASY Dual local/CPU-remote/CON
- 3 ACCESS TO MAIN MENU
- 4 FEATURES
- 5 Documents / Resources
 - 5.1 References
- 6 Related Posts

KT-8122 Full HD KVM Extender Over IP

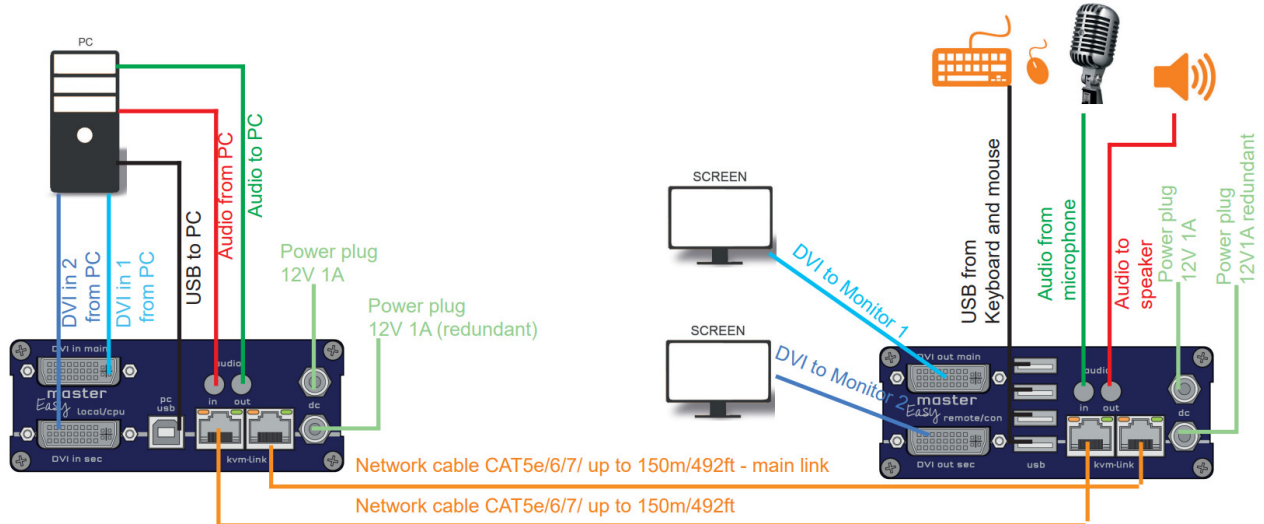
Open OSD menu

The OSD main menu is opened with the standard shortcut: 5 x ALT Gr

(**Attention:** the first 20 seconds 5 x Scroll always works, in case the shortcut was forgotten.)

Switching list: CTRL+ALT+PRINT

Changing the shortcuts in the OSD menu Go to the Remote Settings and then navigate to Keyboard Shortcut.



Delivery Content

LOCAL/CPU Unit

- 1 x ME2-F local (CPU)
- 1 x wall power supply 12V 1A INT or (EU-plug)
- 2 x DVI – DVI cable 1,8m/5,9ft
- 2 x VGA -DVI cable 1,8m/5,9ft opt
- 2 x Audio cable 1,8m/5,9ft opt
- 1 x USB cable 1,8m/5,9 ft
- 4 x rubber feet

REMOTE/CON Unit

- 1 x ME2 remote (CON)
- 1 x wall power supply 12V 1A (INT or EU-plug)
- 4 x rubber feet

Quick Installation masterEASY Dual local/CPU-remote/CON

1. Connect the CON/Remote and the CPU/Local Unit to the included 12V 1A power supply.
2. Now connect the USB cable to a USB port on your PC and connect the other end of the USB cable to the CPU/Local Unit. Connect keyboard and mouse to the CON/Remote Unit.
3. Connect the CPU/Local and the CON/Remote Unit with a network cable.
4. Now connect the DVI cable to the DVI socket of the PC and the other end to the DVI socket of the CPU/Local Unit (PC-in).
5. Connect the DVI cable to the DVI socket of the PC and the other end to the DVI socket of the CON/Local Unit (PC-in 2). Then connect the monitor to the CON/Remote Unit using the DVI cable.
6. Opt: Connect PC Audio out with the audio cable to local audio/in. Connect audio/out via the audio cable
7. Almost done! Opt: Connect the audio cable local audio/out to the PC audio/in and remote audio/out with audio cable to the microphone
8. If you are using a switch: Connect all endpoints to the switch. Ensure that all connections have a bandwidth of 1

Gbit/sec. For video sharing the network has to support IGMP snooping (Switch Layer3)

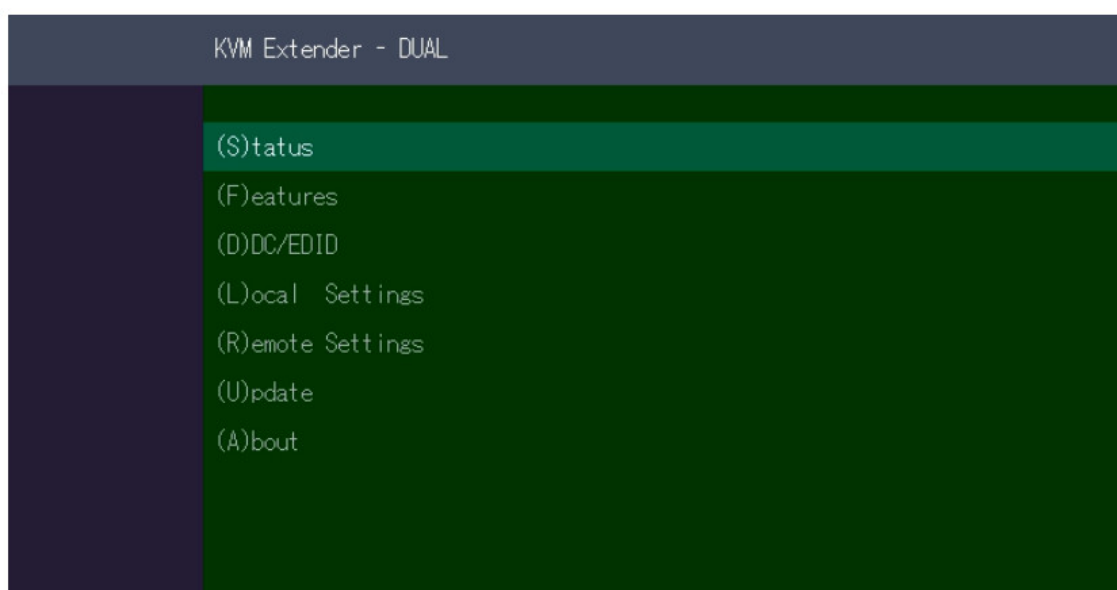
HAVE FUN – your kvm-tec Extender is now in use for many years (MTBF approx 10 years)

ACCESS TO MAIN MENU

Use the monitor and the keyboard to access the main menu

Access to the main menu.

1. make sure the extenders, monitors, and computers are turned on.
2. Press the Scroll Lock button five times quickly. The main menu and an overview of the submenus are displayed.
3. To enter a submenu, press the corresponding key.



Main menu Short Cuts:

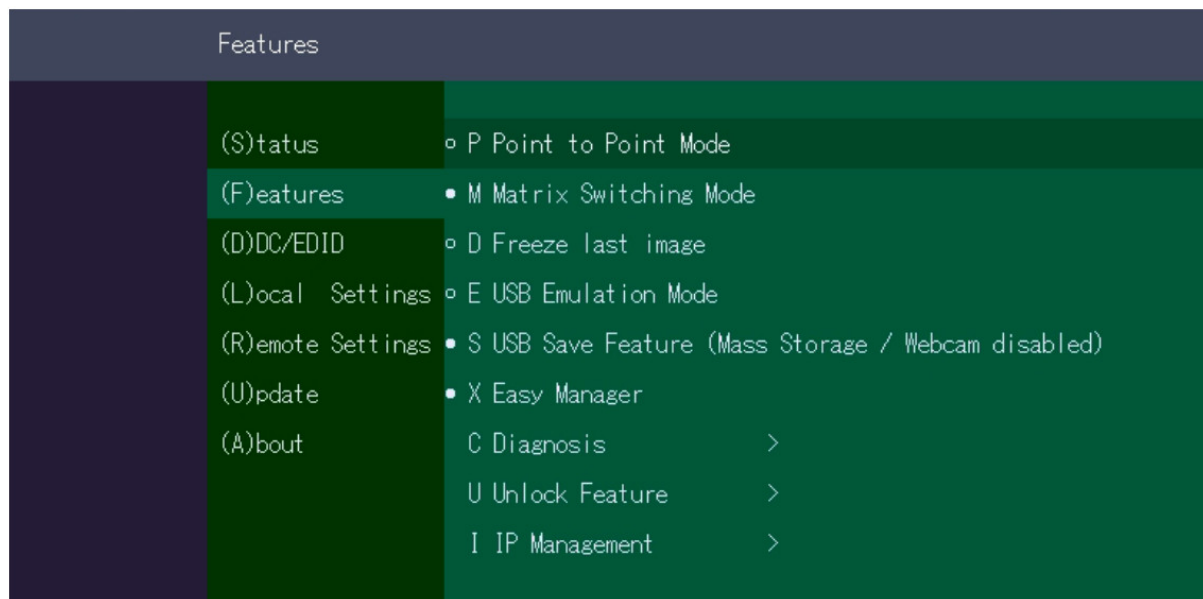
S Status Overview	Menu Status/current Status
U Update Flash FW	Firmware update
F Features Overview	Settings Features
D DDC Option	DDC Option Fix
L Local Settings	Settings Local
R Remote Settings	Settings Remote
A About Overview Key „Esc“	Exit

DISPLAYING THE FIRMWARE VERSION

Make sure that the main menu is open. Under „A“ – About the currently installed firmware version of the remote (CON) and local (CPU) extender is displayed

FEATURES

Press the F key to enter the Features menu.
Switching mode is set by default



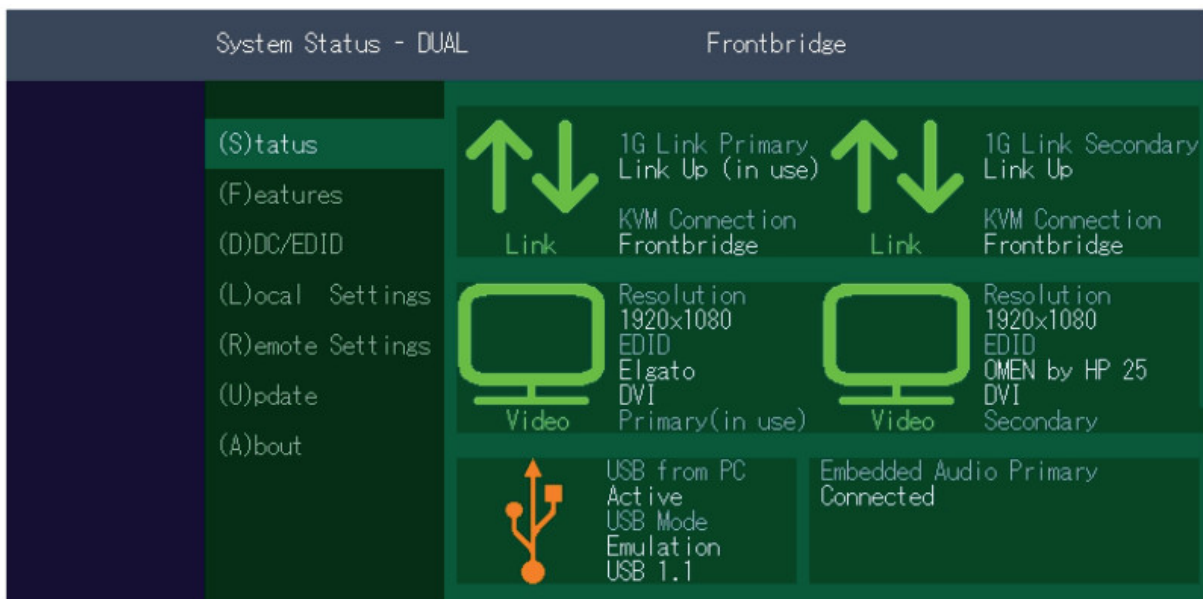
FRONTBRIDGING

HARDWARE: 1 X DUAL LOCAL + 2 X SINGLE REMOTE

The „Status Menu“ displays the current status of the extender connection. The menu shows the information about the connection, the resolution of the video channel and the USB status.

The link status shows if a connection is possible. Connected shows if the kvm files can currently be transferred.

Video and USB show if data is currently being transferred



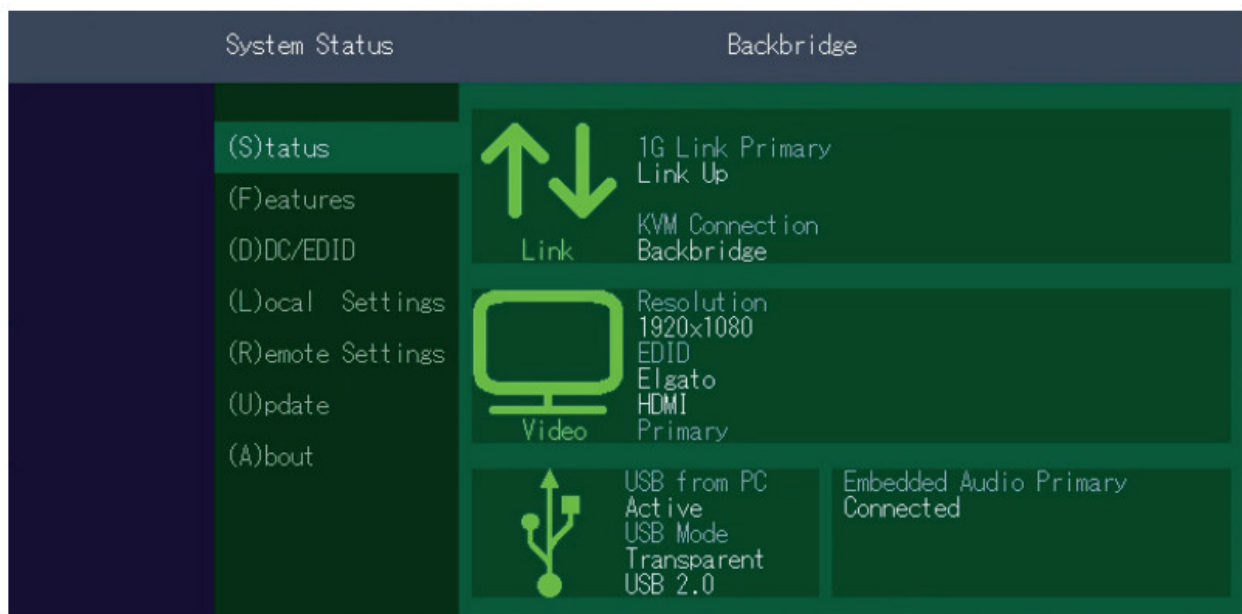
BACKBRIDGING

HARDWARE: 1 X DUAL LOCAL + 2 X SINGLE REMOTE

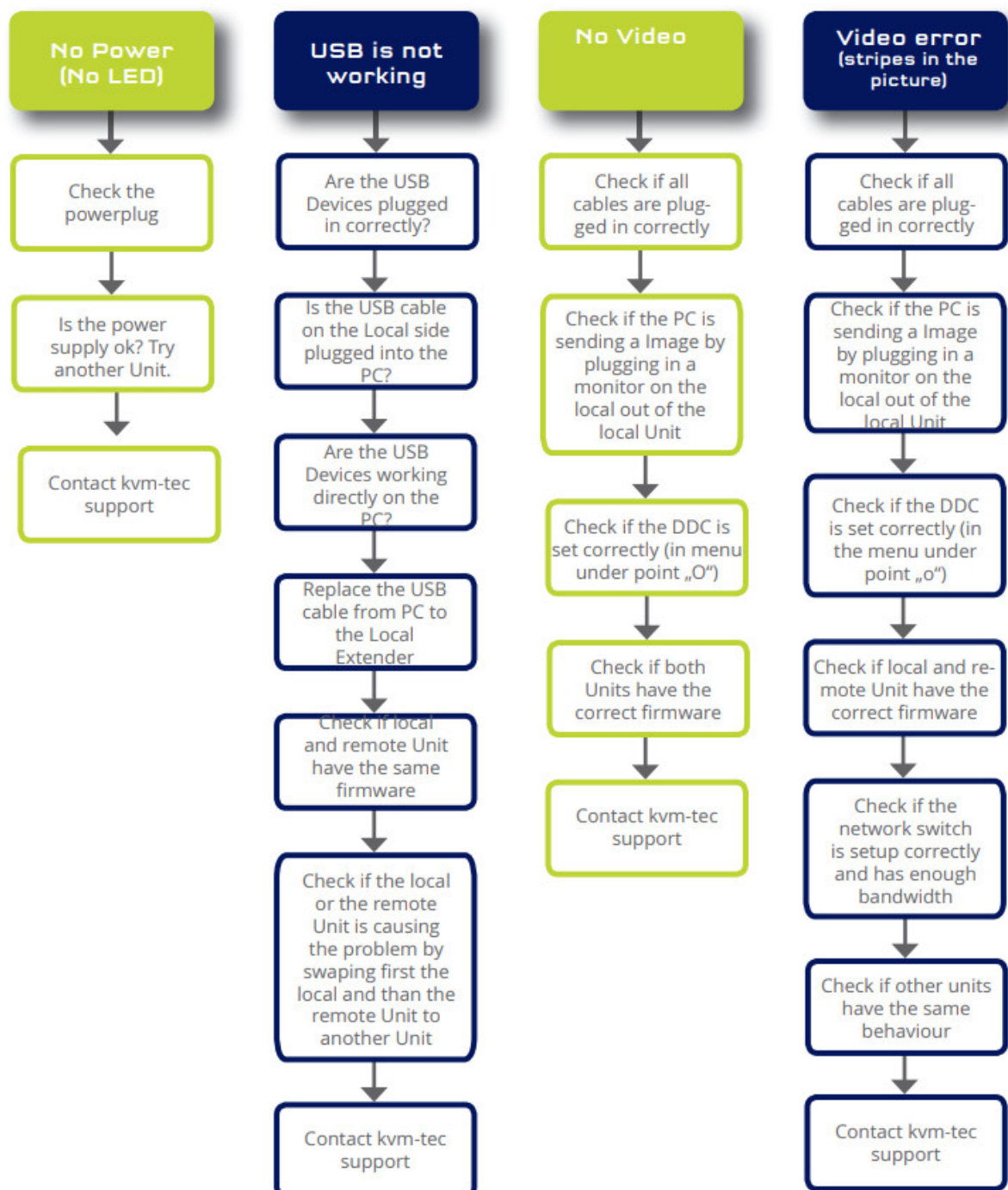
The „Status Menu“ displays the current status of the extender connection. The menu shows the information about the connection, the resolution of the video channel and the USB status.

The link status shows if a connection is possible. Connected shows if the kvm files can currently be transferred.

Video and USB show if data is currently being transferred



kvm-tec First Aid masterEASY



KVM-TEC Gewerbepark Mitterfeld 1 A 2523 Tattendorf Austria www.kvm-tec.com	KVM-TEC ASIA p +9173573 20204 sales.apac@kvm-tec.com KVM-TEC CHINA – P + 86 1360 122 8145 chinasales@kvm-tec.com www.kvm-tec.com	IH Be 88 Ge W
IHSE USA LLC 1 Corp.Dr.Suite Cranburry NJ 08512 USA www.ihseusa.com	IHSE GMBH Asia 158Kallang Way,#07-13A 349245 Singapore www.ihse.com	IH Rc Bu Gl W

We are here for you to answer your questions about installation?

Manual download www.kvm-tec.com

or kvm-tec Installationchannel on our homepage personally +43 2253 81912



www.kvm-tec.com

kvm-tec Support

support@kvm-tec.com

Phone: +43 2253 81912-30

V102022

Misprints, errors and technical changes reserved



Documents / Resources

	kvm-tec KT-8122 Full HD KVM Extender Over IP [pdf] Instruction Manual KT-8122 Full HD KVM Extender Over IP, KT-8122, Full HD KVM Extender Over IP, Full HD KVM Extender, KVM Extender, Extender
--	--

References

- [TEC - Residential and Business Internet, Voice, and Security](#)
- [Technology leader made in Germany | IHSE - KVM & Beyond](#)
- [IHSE - KVM -IP KVM - KVM -IHSE](#)
- [Home - IHSE](#)

- [Kvm-tec.com: KVM Extender over IP - Matrix Switching Systeme](#)