



# kvm-tec KT-6970 Set Media 4K Connect Uncompressed Installation Guide

[Home](#) » [kvm-tec](#) » [kvm-tec KT-6970 Set Media 4K Connect Uncompressed Installation Guide](#) 

## Contents

- 1 [kvm-tec KT-6970 Set Media 4K Connect Uncompressed](#)
- 2 [Delivery Content](#)
- 3 [Duplex multimodeOM3-fi bercable \(LC\) up to 300m/984ft for main link](#)
- 4 [MEDIA4KCONNECT SIMULTANEOUS DOWNSCALING](#)
- 5 [USING ON SCREEN MENU](#)
- 6 [SYSTEM STATUS](#)
- 7 [SETTINGS](#)
- 8 [FEATURES](#)
- 9 [MATRIX SWITCHING SYSTEM](#)
- 10 [UNCOMPRESSED MODE](#)
- 11 [UNLOCK FEATURES REDUNDANT UNCOMPRESSED FOR SWITCHING SYSTEMS](#)
- 12 [ADDRESS & PHONE/EMAILS](#)
- 13 [Documents / Resources](#)
  - 13.1 [References](#)
- 14 [Related Posts](#)



**kvm-tec KT-6970 Set Media 4K Connect Uncompressed**



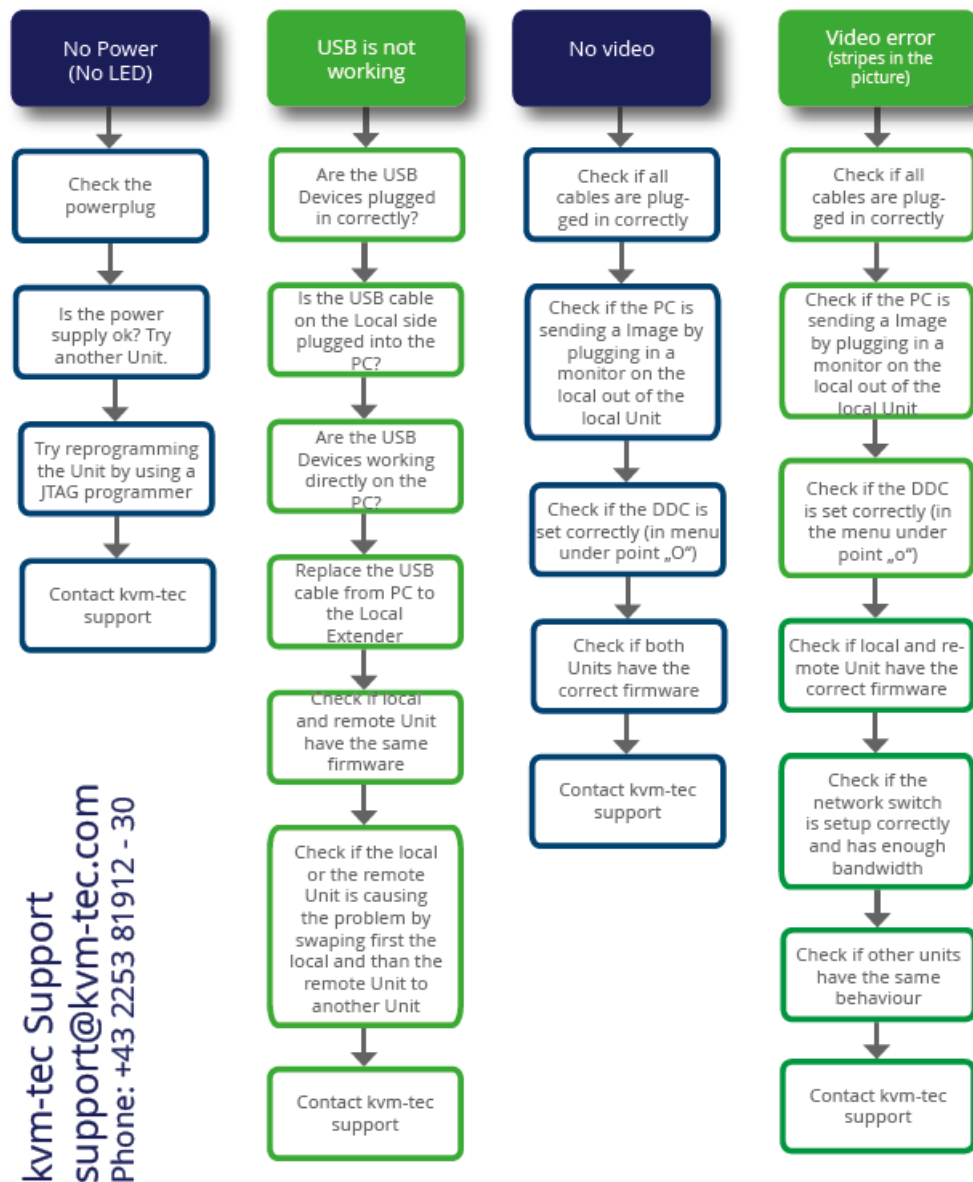
## Delivery Content

### LOCAL/CPU Unit

- 1 x Media4Kconnect uncompressed local (CPU)
- 1 x 12VDC 2A power supply
- 1 x DP-DP cable 1,8m/5.9ft
- 1 x USB A-cable 1,8m/5.9ft
- 2 x SFP+Multimode up to
- 300m/1640ft
- 4 x rubber feet

### REMOTE/CON Unit

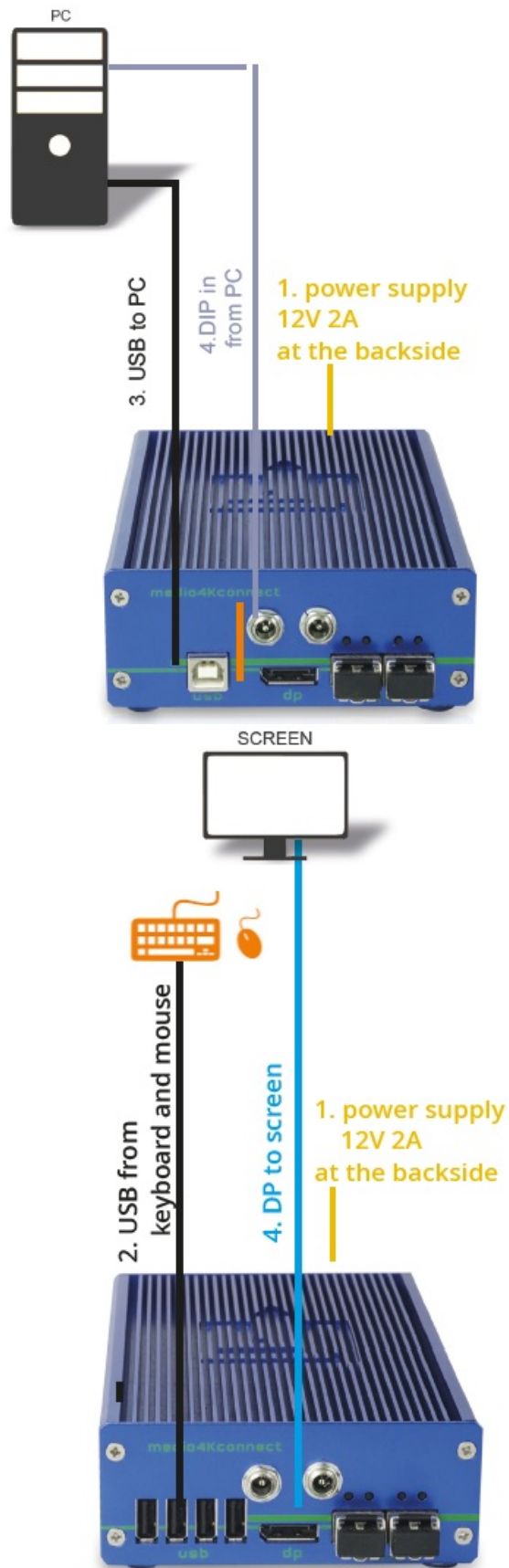
- 1 x Media4Kconnect uncompressed remote (CON)
- 1 x 12VDC 2A power supply
- 2 x SFP+Multimode up to
- 300m/1640ft
- 4 x rubber feet



Check out our Installation Channel:



Duplex multimodeOM3-fi bercable (LC) up to 300m/984ft for main link



## QUICK INSTALLATION

1. Connect the CON/Remote and the CPU/Local Unit each with the included 12V 2A power supplies.
2. Now connect the USB cable to a USB socket of your PC and connect the other end of the USB cable to the Local Unit.
3. Connect the keyboard and mouse to the Remote Unit.

4. Connect the Local Unit and the Remote Unit with a network fiber cable OM3.
5. Connect one end of the DP cable to your PC and the other end to your Local Unit. Then connect one end of the DP cable to your monitor and the other end to your Remote Unit.

**MUCH FUN** – Your kvm-tec Extender will now be in use for many years ( MTBF approx. 10 years) for you!

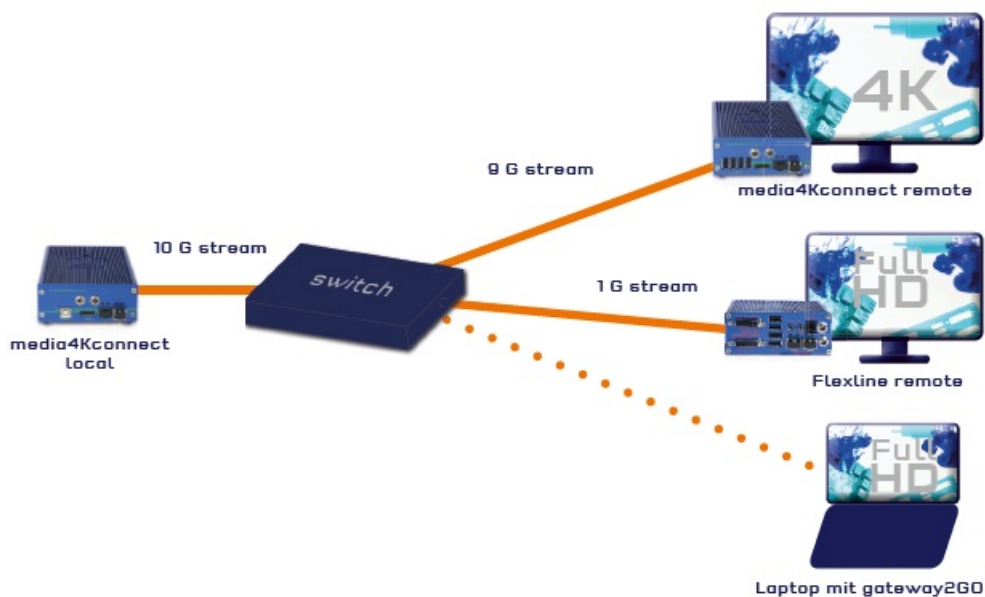
Please note that the recommended length of the display port cable should be max 1.8m, otherwise an interference-free 4K transmission may not be guaranteed.

If you have a monitor that has an HDMI input, please use a video adapter with 60 Hz ( at 30 Hz the screen will remain black.

Our recommendation

Please use OM3 cable to have enough bandwidth.

## MEDIA4KCONNECT SIMULTANEOUS DOWNSCALING

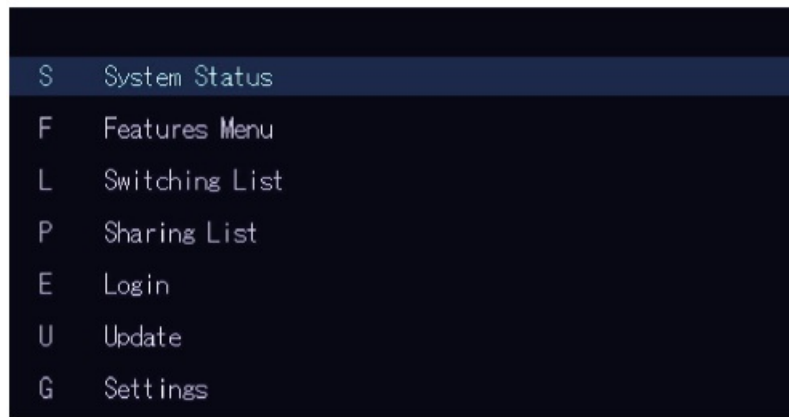


4K sources can be displayed simultaneously in 4K and with downscaling in Full HD on the remote unit. The output of the stream is done with 4K over 10G bandwidth. The FHD video is transmitted over the second link with a bandwidth of up to 1 Gbit. The data streams can be routed and shared independently and one source can be split to any number of screens. J3 cable to have enough bandwidth.

## USING ON SCREEN MENU

Use the monitor and keyboard to access the main menu. Access to the main menu

1. Make sure that the extenders, monitors and computer are turned on
2. Press the Alt gr five times one after the other. The main menu and the overview of the submenus are displayed.
3. To access a submenu, press the corresponding key or navigate with the arrow keys up and down to the corresponding line and then press Enter key.



SCREEN „OSD menu“

In the main menu you can make the following settings by selecting the corresponding letters:

### Press

- **S** System status: menu system status/ current status
- **F** Features Menu: activated features
- **L** Switching List: Switching List
- **P** Sharing List: Sharing List
- **E** Login: Login
- **U** Update: update firmware
- **G** Settings: settings

## SYSTEM STATUS

By pressing the **S** key or by selecting the arrow keys, you access the status menu, where you will find information about hardware and software versions, as well as the activated upgrades. The menu displays information about the connection, the resolution of the video channel and the USB status. The current Firmware version is displayed in the upper left corner. The link status indicates whether a connection is possible.

Video and USB display data transfer status



SCREEN „System Status“

1. The current version of the firmware can be downloaded from <http://www.kvm-tec.com/de/support>. Each update file contains a detailed description of the update process. For further information please refer to the update chapter
2. Connect the USB stick to the CON (REMOTE) Unit (wait a few seconds until the USB stick is connected to the

CON Unit).

3. Then open the update menu with the „U“ key.
4. Press the **U** key to start the update on the remote (CON) unit.
5. Call the file with **S**
6. The firmware is shown on the display under Configuration found,
7. Press the **U** key to start the update on the remote (CON) unit



## SETTINGS

By pressing the G key or selecting the arrow keys you will have access to the Settings menu, where you can access all Extender settings.



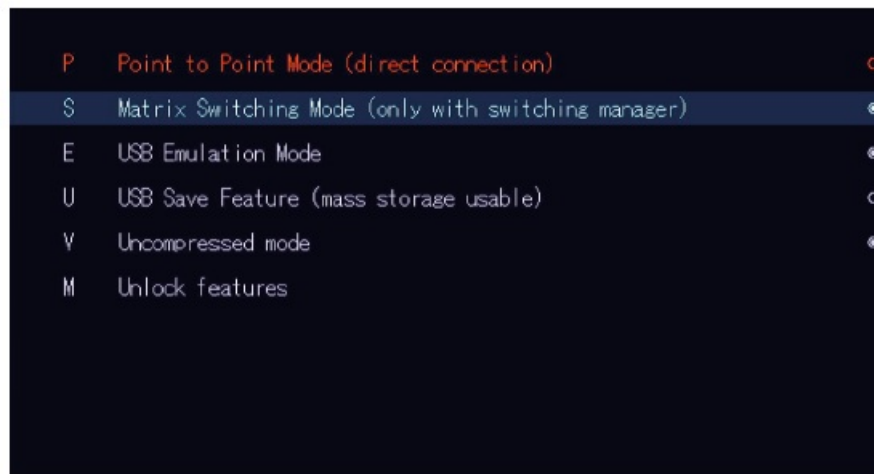
Screen „Settings“

## FEATURES

### MENU FEATURES

Pressing the F key or selecting the arrow keys, you will access the FEATURES menu, where you can select all the functions and the features.

- **P** Point to point Mode on/off
- **S** Matrix Switching Mode
- **E** USB Emulation Mode
- **U** USB Save Feature
- **V** Uncompressed mode
- **M** Unlock Features – redundant order uncompressed in Switching System



## POINT TO POINT

Pressing **P** takes you to the point to point configuration. By default the Remote is directly connected to the Local.

## MATRIX SWITCHING SYSTEM

Pressing **S** takes you to the Matrix Switching System configuration.

If this function is active, the Multiview Commander and Mouse Glide functions are controlled via the Switching Manager software (see Switching Manager manual).

All functions of the switching system can be operated via the Switching Manager software.

With this link you can download the Switching Manager Software Manual  
downloaden: [www.kvm-tec.com/en/support/manual](http://www.kvm-tec.com/en/support/manual)

## UNCOMPRESSED MODE

By pressing **V** you can enable and disable the Uncompressed Mode. Once this function is enabled, the KVM Extender will transmit up to 4K resolution uncompressed and in 10bit color depth.

Please note that for this mode you need two 10G fiber lines between the remote and the local unit!

## UNLOCK FEATURES REDUNDANT UNCOMPRESSED FOR SWITCHING SYSTEMS

In this menu you can also unlock the „Uncompressed“ and „Redundancy“ feature after purchasing your 4k KVM Extender.

Order the unlock code for the desired feature from your supplier by providing the device ID and serial number of the 4k KVM Extender.

By typing in the unlock code you unlock the desired feature. After unlocking, activate the desired feature in the feature menu.

We are here for you to answer your questions about installation?

Manual download [www.kvm-tec.com](http://www.kvm-tec.com) or kvm-tec Installationchannel on our homepage

## ADDRESS & PHONE/EMAILS

If you have any questions about our products, please contact kvm-tec or your dealer.

kvm-tec electronic gmbh  
Gewerbepark Mitterfeld 1A  
2523 Tattendorf

**Austria**

Phone: 0043 (0) 2253 81 912

Email: [sales@kvm-tec.com](mailto:sales@kvm-tec.com)

Email: [support@kvm-tec.com](mailto:support@kvm-tec.com)



Web: [www.kvm-tec.com](http://www.kvm-tec.com)

You can find our latest updates and FAQs on our homepage:

<https://www.kvm-tec.com/support/overview-support/>

## Documents / Resources



[kvm-tec KT-6970 Set Media 4K Connect Uncompressed](#) [pdf] Installation Guide  
KT-6970 Set Media 4K Connect Uncompressed, KT-6970, Set Media 4K Connect  
Uncompressed, Connect Uncompressed, Uncompressed

## References

- [TEC - Residential and Business Internet, Voice, and Security](#)
- [Through: Technology leader made in Germany | IHSE - KVM & Beyond](#)
- [Through: IHSE - KVM -IP KVM - KVM -IHSE](#)
- [Through: Home - IHSE](#)
- [Kvm-tec.com: KVM Extender over IP - Matrix Switching Systeme](#)
- [Kvm-tec.com: KVM Extender over IP, kvm-tec overview support](#)

[Manuals+](#)