



kvm-tec KT-6935 SET media4Kconnect Special Redundant Extender Over IP Owner's Manual

[Home](#) » [kvm-tec](#) » kvm-tec KT-6935 SET media4Kconnect Special Redundant Extender Over IP Owner's Manual



Contents

- 1 [kvm-tec KT-6935 SET media4Kconnect Special Redundant Extender Over IP](#)
- 2 [Delivery Content](#)
- 3 [CHART](#)
- 4 [CONNECTION](#)
- 5 [THE SIMULTANEOUS DOWNSCALING](#)
- 6 [USING ON SCREEN MENU](#)
- 7 [SYSTEM STATUS](#)
- 8 [FEATURES](#)
- 9 [FEATURES](#)
- 10 [MATRIX SWITCHING SYSTEM](#)
- 11 [UNLOCK FEATURES REDUNDANT](#)
- 12 [Documents / Resources](#)
 - 12.1 [References](#)
- 13 [Related Posts](#)



kvm-tec KT-6935 SET media4Kconnect Special Redundant Extender Over IP



Delivery Content

LOCAL/CPU Unit

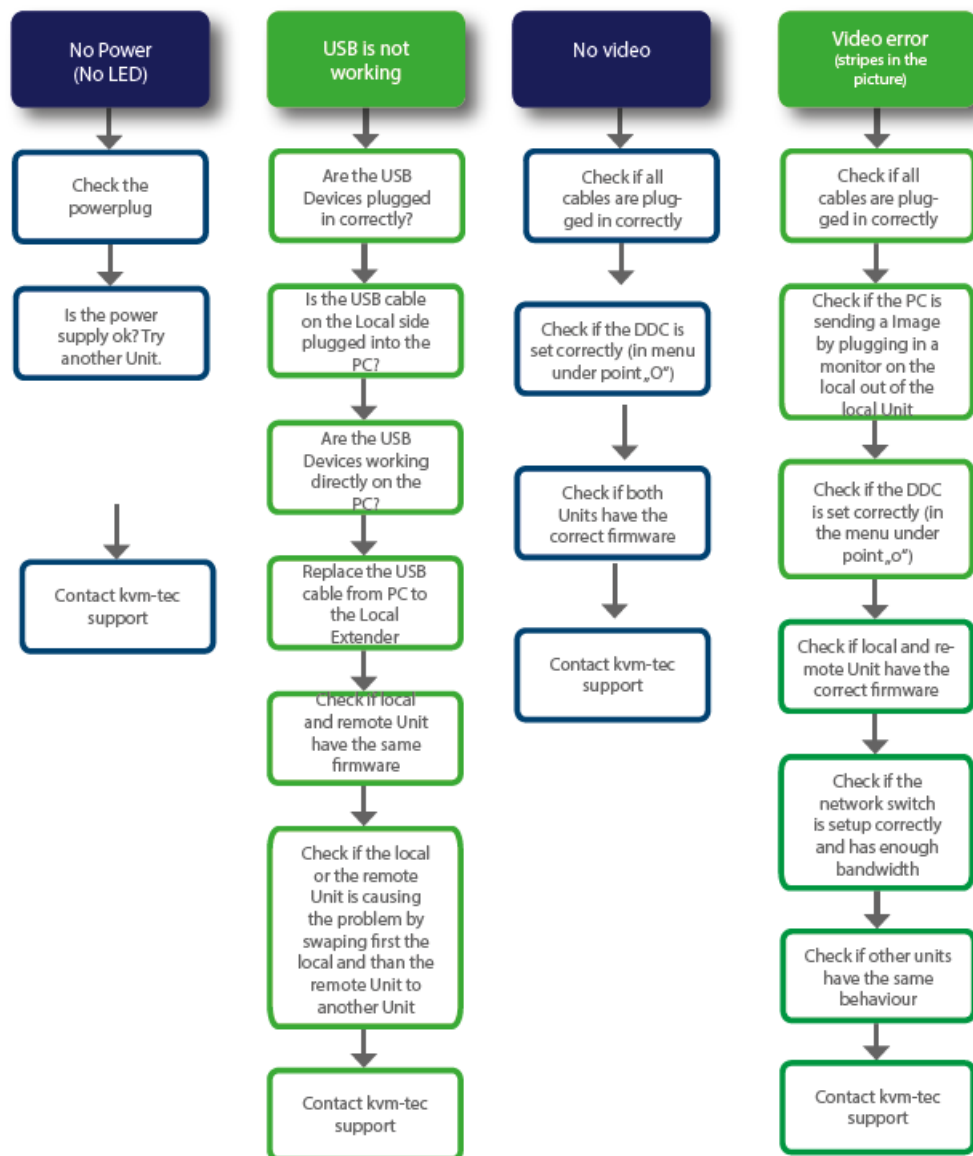
- 1 x Media4Kconnect redundant local (CPU)
- 2 x 12VDC 2A power supply
- 1 x DP-DP cable 1,8m/5.9ft
- 1 x USB A-B cable 1,8m/5.9ft
- 2 x SFP+Multimode up to 300m/984ft alt. 2 x SFP Single Mode up to 10km/6.2mi
- 4 x rubber feet

REMOTE/CON Unit

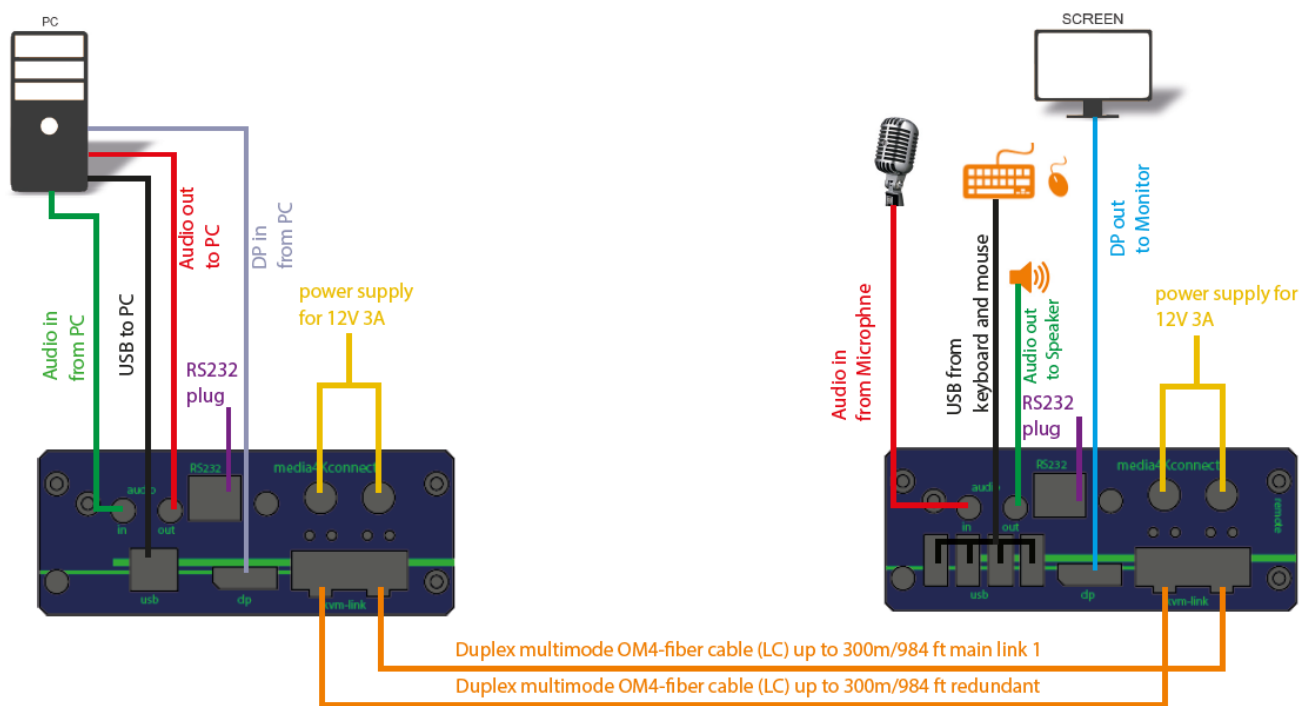
- 1 x Media4Kconnect redundant remote (CON)
- 2 x 12VDC 2A power supply
- 2 x SFP+Multimode up to 300m/984 ft alt.
- 2 x SFP Single Mode up to 10km/6.2mi
- 4 x rubber feet

We are here for you to answer your questions about installation? Manual download www.kvm-tec.com or kvm-tec Installationchannel on our homepage personally +43 2253 81912

CHART



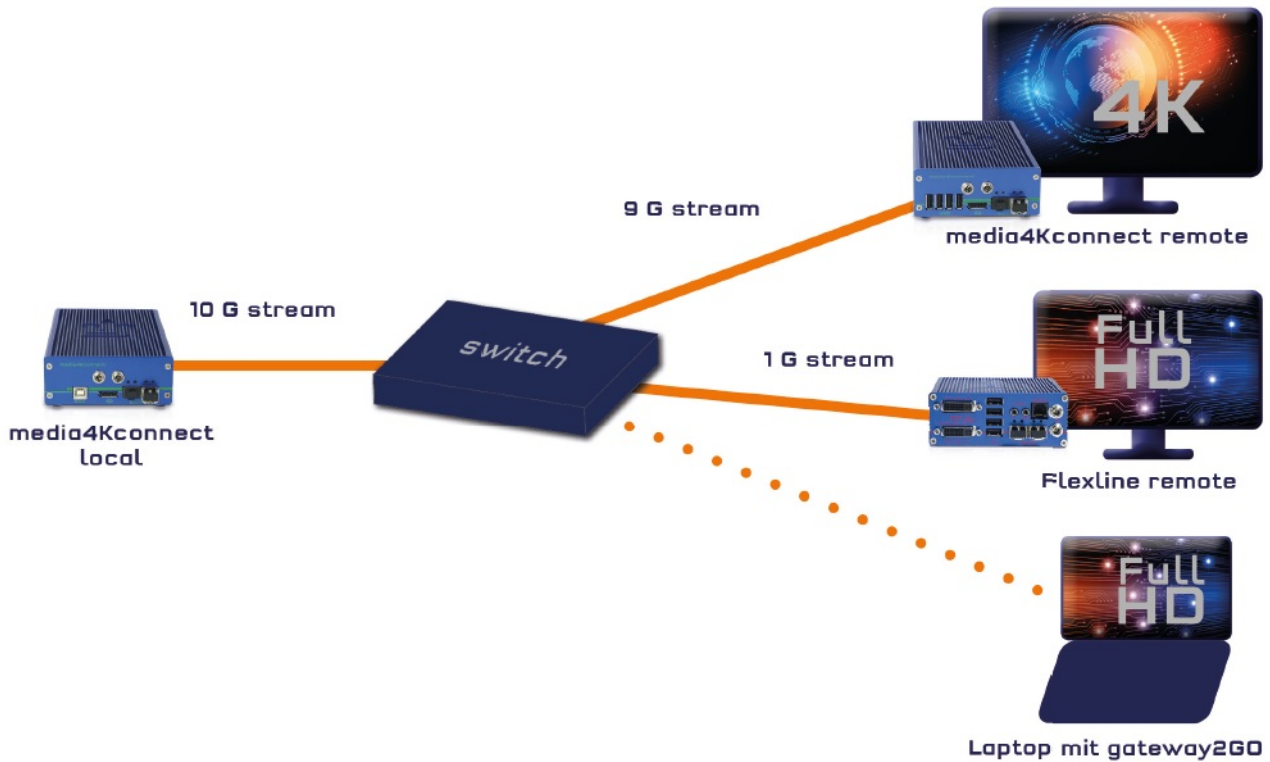
CONNECTION



1. Connect the CON/Remote and the CPU/Local Unit with the supplied 12V 3A power supply.
2. Now connect the USB cable to a USB socket of your PC and connect the other end of the USB cable to the Local Unit. Connect the keyboard and mouse to the Remote Unit.
3. Connect the Local and the Remote Unit with a network fiber cable.
4. Connect the DP cable to the DP socket of the PC to the DP socket DP/in of the Local device and connect the screen on the remote side with the DP cable.
5. Connect the Audio cable from PC to Local Extender and connect the Audio cable from Remote Extender to Speaker
6. Connect the Audio Cable from Microphone to Remote Extender and connect the Audio cable from Local Extender to PC.

HAVE FUN – Your kvm-tec Extender is now in use for many years (MTBF approx. 10 years)!

THE SIMULTANEOUS DOWNSCALING



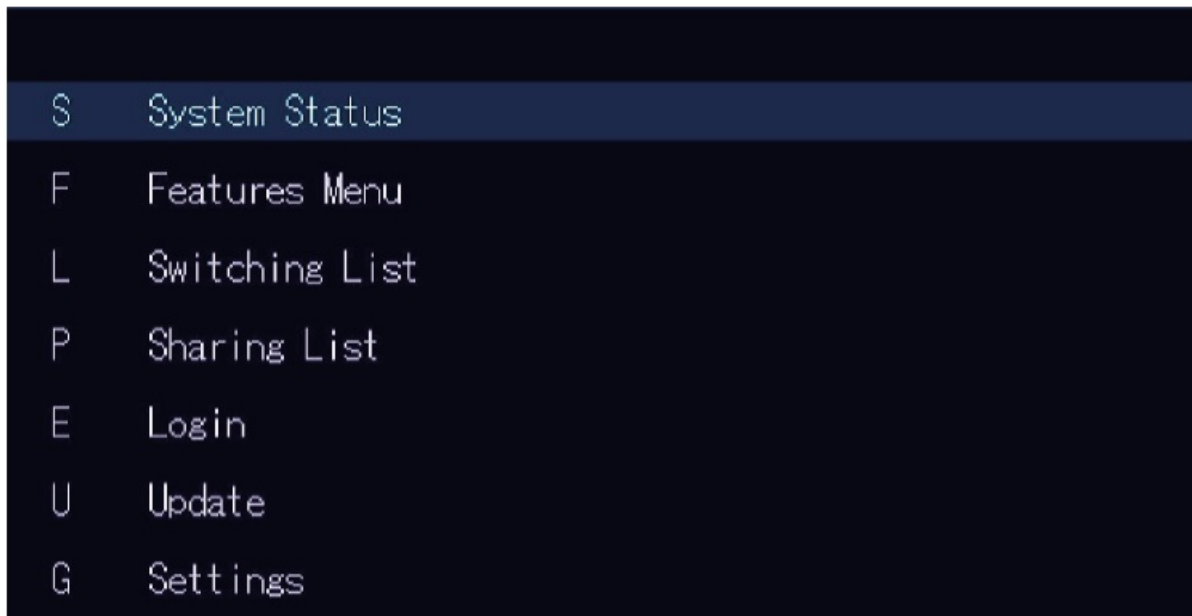
4K sources can be displayed simultaneously in 4K and with downscaling in Full HD on the remote unit. The output of the stream is done at 4K over 10G bandwidth. Two streams are transmitted simultaneously, so the 4K stream has 9 GBit and the second stream in Full HD 1 Gbit. The streams can be routed and shared independently and one source can be split to any number of screens. One user has full USB control (keyboard and mouse etc).

USING ON SCREEN MENU

Use the monitor and keyboard to access the main menu.

Access to the main menu

1. Make sure that the extenders, monitors and computer are turned on
2. Press the Alt gr five times one after the other. The main menu and the overview of the submenus are displayed.
3. To access a submenu, press the corresponding key or navigate with the arrow keys up and down to the corresponding line and then press Enter key



In the main menu you can make the following settings by selecting the corresponding letters:

Press

- **S** System status menu system status/ current status
- **F** Features Menu activated features
- **L** Switching List Switching List
- **P** Sharing List Sharing List
- **E** Login Login
- **U** Update update firmware
- **G** Settings settings

Point to Point

Press „P“ to activate the point to point mode. By default, the Remote Unit is connected directly to the Local.

SYSTEM STATUS

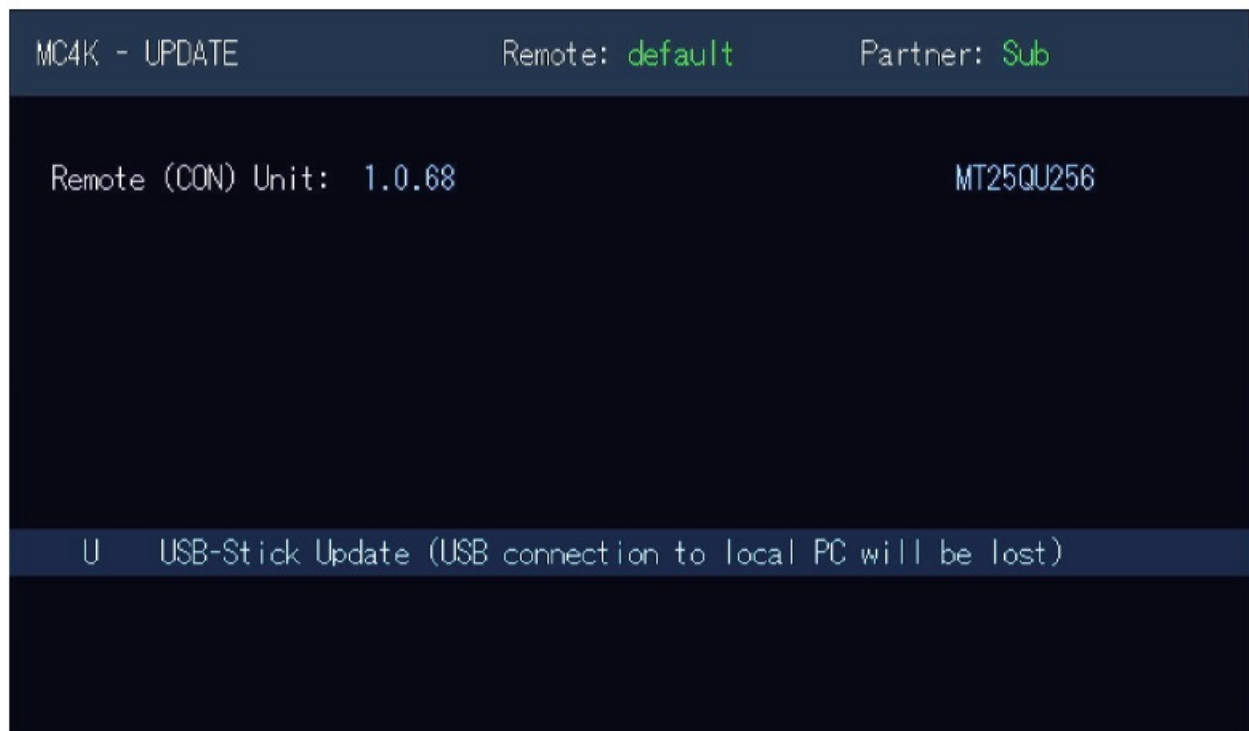
By pressing the „S“ key or by selecting the arrow keys, you access the status menu, where you will find information about hardware and software versions, as well as the activated upgrades. The menu displays information about the connection, the resolution of the video channel and the USB status. The current Firmware version is displayed in the upper left corner. The link status indicates whether a connection is possible. Video and USB display data transfer status.



SCREEN „System Status“

UPDATE

1. The current version of the firmware can be downloaded from <http://www.kvm-tec.com/de/support>. Each update file contains a detailed description of the update process. For further information please refer to the update chapter
2. Connect the USB stick to the CON (REMOTE) Unit (wait a few seconds until the USB stick is connected to the CON Unit).
3. Then open the update menu with the „U“ key.
4. Press the „ U “ key to start the update on the remote (CON) unit.
5. Call the file with „S
6. The firmware is shown on the display under „Configuration found“,
7. Press the „U“ key to start the update on the remote (CON) unit



SETTINGS

By pressing the „G“ key or selecting the arrow keys you will have access to the Settings menu, where you can access all Extender settings.



FEATURES

MENU FEATURES

Pressing the „F“ key or selecting the arrow keys, you will access the FEATURES menu, where you can select all the functions and the features.

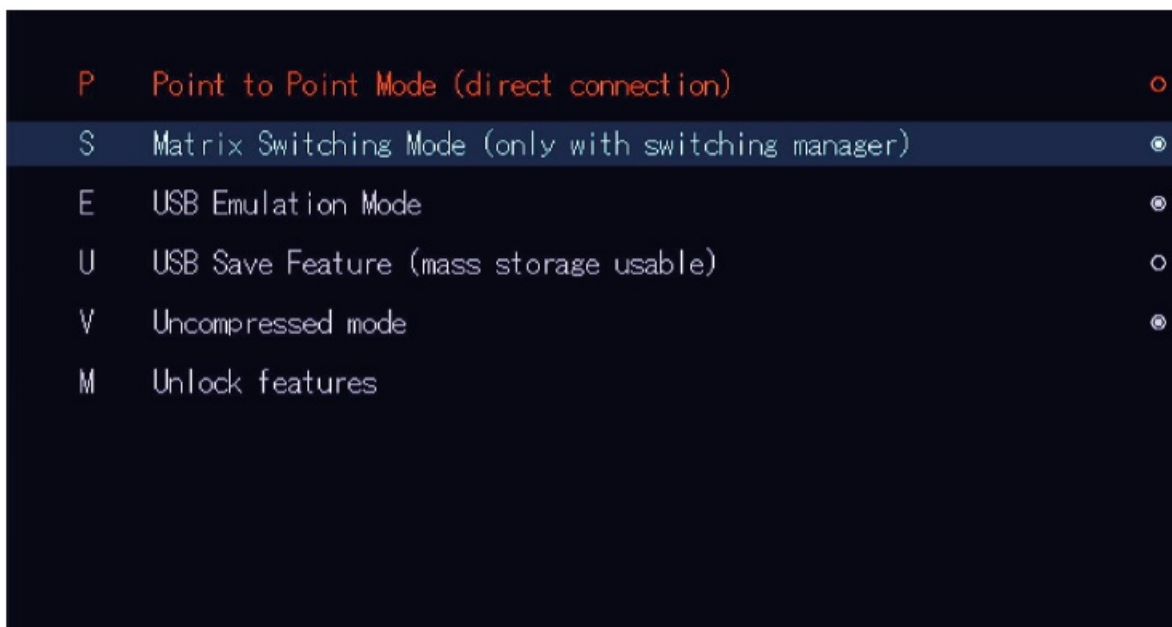
- P Point to point Mode on/off
- S Matrix Switching Mode
- E USB Emulation Mode
- U USB Save Feature V Uncompressed mode
- M Unlock Features – redundant oder uncompressed im Switching System

FEATURES

MENU FEATURES

Pressing the „F“ key or selecting the arrow keys, you will access the FEATURES menu, where you can select all the functions and the features.

- P Point to point Mode on/off
- S Matrix Switching Mode
- E USB Emulation Mode



- U USB Save Feature
- V Uncompressed mode
- M Unlock Features – redundant oder uncompressed im Switching System

.SCREEN „Menu Features“

POINT TO POINT

Pressing „P“ takes you to the point to point configuration. By default the Remote is directly connected to the Local.

MATRIX SWITCHING SYSTEM

Pressing „S“ takes you to the Matrix Switching System configuration. If this function is active, the Multiview

Commander and Mouse Glide functions are controlled via the Switching Manager software (see Switching Manager manual). All functions of the switching system can be operated via the Switching Manager software. With this link you can download the Switching Manager Software Manual

Downloader: www.kvm-tec.com/en/support/manual

UNCOMPRESSED MODE

- By pressing „V“ you can enable and disable the Uncompressed Mode.
- Once this function is enabled, the KVM Extender will transmit up to 4K resolution uncompressed and in 10bit color depth.
- Please note that for this mode you need two 10G fiber lines between the remote and the local unit!

UNLOCK FEATURES REDUNDANT

UNCOMPRESSED FOR SWITCHING SYSTEMS

- In this menu you can also unlock the „Uncompressed“ and „Redundancy“ feature after purchasing your 4k KVM Extender.
- Order the unlock code for the desired feature from your supplier by providing the device ID and serial number of the 4k KVM Extender.
- By typing in the unlock code you unlock the desired feature. After unlocking, activate the desired feature in the feature menu.

ADDRESS & PHONE/EMAILS

If you have any questions about our products, please contact kvm-tec or your dealer.

kvm-tec electronic gmbh Gewerbepark Mitterfeld 1A 2523 Tattendorf Austria

Phone: 0043 (0) 2253 81 912

Email: sales@kvm-tec.com

Email: support@kvm-tec.com

Web: www.kvm-tec.com

You can find our latest updates and FAQs on our homepage: <https://www.kvm-tec.com/support/overview-support/>

KVM-TEC Gewerbepark Mitterfeld 1 A 2523 Tattendorf Austria www.kvm-tec.com

IHSE GmbH Benzstr.1 88094 Oberteuringen Germany www.ihse.com

IHSE USA LLC 1 Corp.Dr.Suite Cranburry NJ 08512 USA www.ihseusa.com





Documents / Resources



[kvm-tec KT-6935 SET media4Kconnect Special Redundant Extender Over IP](#) [pdf] Owner's Manual
KT-6935 SET, media4Kconnect, Special Redundant Extender Over IP, media4Kconnect Special Redundant Extender Over IP, KT-6935 SET media4Kconnect Special Redundant Extender Over IP, Extender

References

- [TEC - Residential and Business Internet, Voice, and Security](#)

-  [Technology leader made in Germany | IHSE - KVM & Beyond](#)
-  [IHSE - KVM -IP KVM - KVM -IHSE](#)
-  [Home - IHSE](#)
-  [Kvm-tec.com: KVM Extender over IP - Matrix Switching Systeme](#)
-  [Kvm-tec.com: KVM Extender over IP, kvm-tec overview support](#)

Manuals+.