



kvm-tec KT-6026R MAXflex Full HD KVM Extender Instructions

[Home](#) » [kvm-tec](#) » kvm-tec KT-6026R MAXflex Full HD KVM Extender Instructions 

Contents

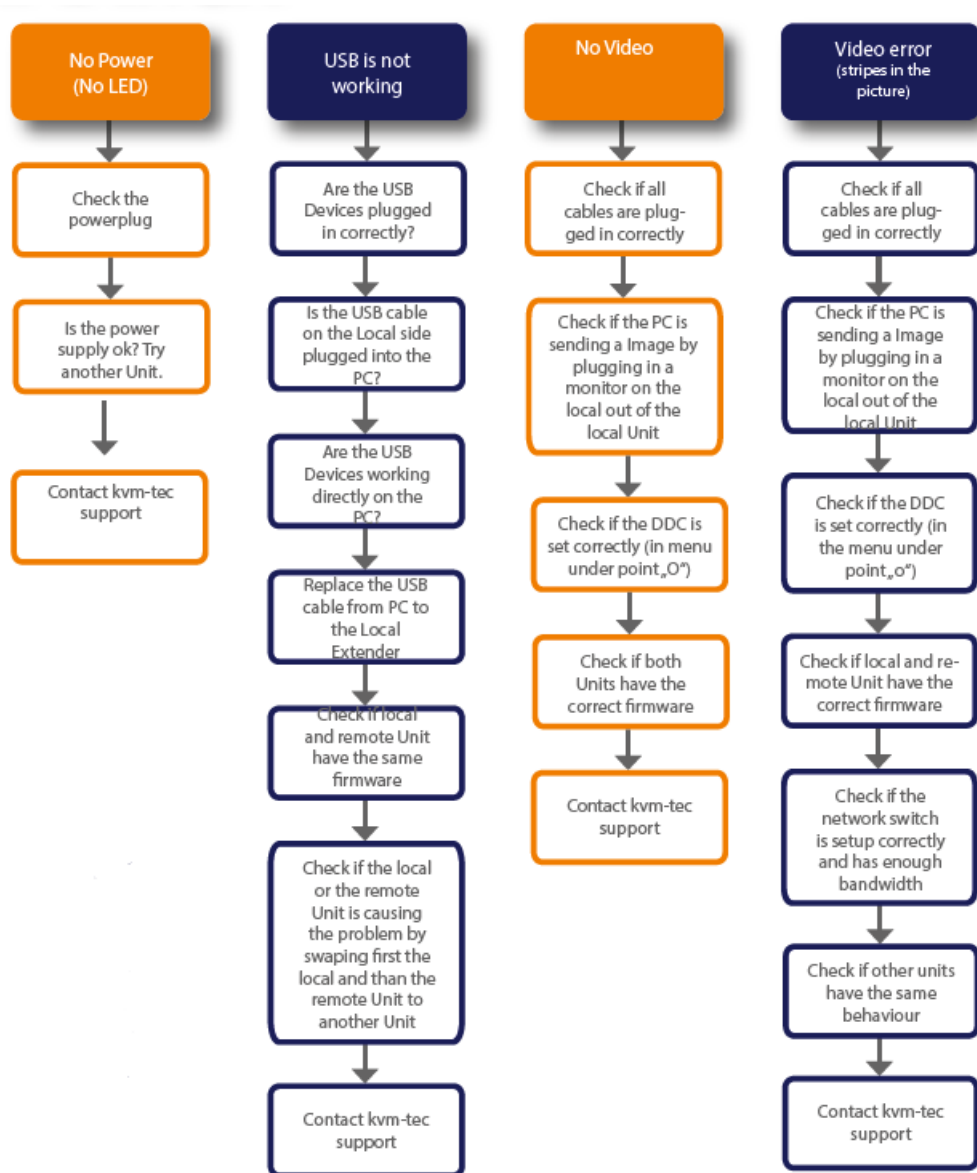
- 1 kvm-tec KT-6026R MAXflex Full HD KVM Extender
- 2 DDelivelivery Cy Cononttentent
- 3 USING THE ON-SCREEN MENU
- 4 SYSTEM STATUS
- 5 Features Menu
- 6 Documents / Resources
 - 6.1 References
- 7 Related Posts

kvm-tec

kvm-tec KT-6026R MAXflex Full HD KVM Extender



We are here for you to answer your questions about installation.



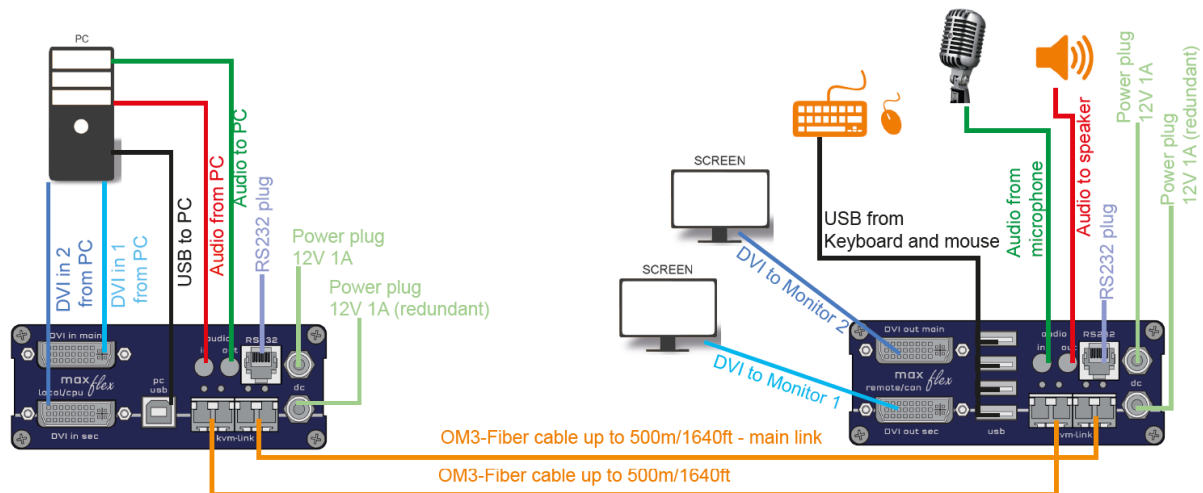
DDeliveliverery Cy Cononttentent

LOCOCAL/CPU UnitAL/CPU Unit

- 1 x M1 x MA2 local (A2 local (CPU)CPU)
- 1 x w1 x wall poll power supply 12V 1A (INT or EU-plug)er supply 12V 1A (INT or EU-plug) 2 x DVI – DVI cable 1,8m/5.9f2 x DVI – DVI cable 1,8m/5.9ftt
- 1 x USB cable 1,8m/5.9f1 x USB cable 1,8m/5.9ftt
- 2 x SFP M2 x SFP Modul-Modul-Multimode bis 500m duple multimode bis 500m duplex Lx LCC 4 x rubber f4 x rubber fleet

REMOREMOTE/CTE/CON Unit ON Unit

- 1 x M1 x MA2 rA2 remote mode (e (CCON)ON)
- 1 x w1 x wall poll power supply 12V 1A (INT or EU-plug)er supply 12V 1A (INT EU-plug) 2 x SFP M2 x SFP Modul-Modul-Multimode bis 500m duple multimode bis
- 500m duplex Lx LCC 4 x rubber f4 x rubber fleet



Open OSD menu-open OSD menu

the OSD main menu is opened with the standard short shortcut: 5 x cut: 5 x ALT GrT Gr

Attention: the first 20 sections: the first 20 seconds 5 x Sounds 5 x Scroll will always work, in case, in case the short shortcut cut was fast for got gotten.)en.)

Switching list ching list : C: CTRL+ALT+ALT+PRINT+PRINT

Changing the shoring of the shortcuts in the OSD menu in the OSD menu Go to the Remote Remote Settings and then settings and then Navigate to Keyboard Keyboard Short Short-cutout.

Quick Installation Maxflex Dual Fiber local / CPU – remote / CON

1. Connect the CON / Remote and the CPU / Local Unit to the included 12V 2A power supply.
2. Now connect the USB cable to a USB port on your PC and connect the other end of the USB cable to the CPU / Local Unit. Connect the keyboard and mouse to the CON / Remote Unit.
3. Connect the CPU / Local and the CON / Remote Unit with a network cable.
4. Now connect the DVI cable to the DVI socket of the PC and the other end to the DVI socket of the CPU / Local Unit (PC-in).
5. Now connect the DVI cable to the DVI socket of the PC and the other end to the DVI socket of the CPU / Local Unit (PC-in 2). Then connect the monitor with the DVI cable to the CON / Remote Unit.
6. Connect PC audio/out with the audio cable to local audio/in. Connect audio/out via the audio cable
7. Almost done! Connect the audio cable local audio/out to the PC audio/in and remote audio/out with the audio cable to the microphone
8. Using a switch: Connect all endpoints to the switch. Ensure that all connections have a bandwidth of 1Gbit/sec. For video sharing the network has to support IGMP snooping. HAVE FUN – your KVM-tec Extender is now in use for many years (MTBF approx 10 years)

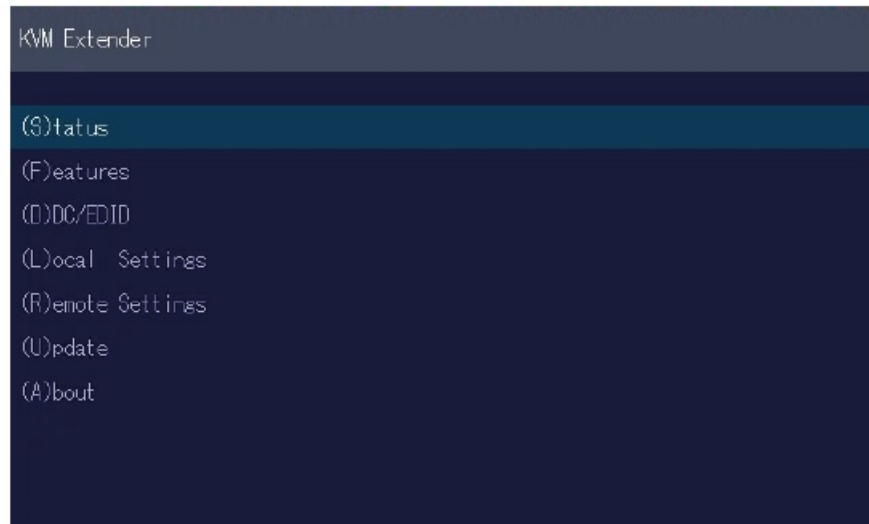
USING THE ON-SCREEN MENU

Use the monitor and keyboard to use the main menu. To access the main menu:

1. Make sure the extenders, the monitors, and the computer are switched on.
2. Press the ALT+GR key on your keyboard quickly five times. The main menu appears with an overview of the

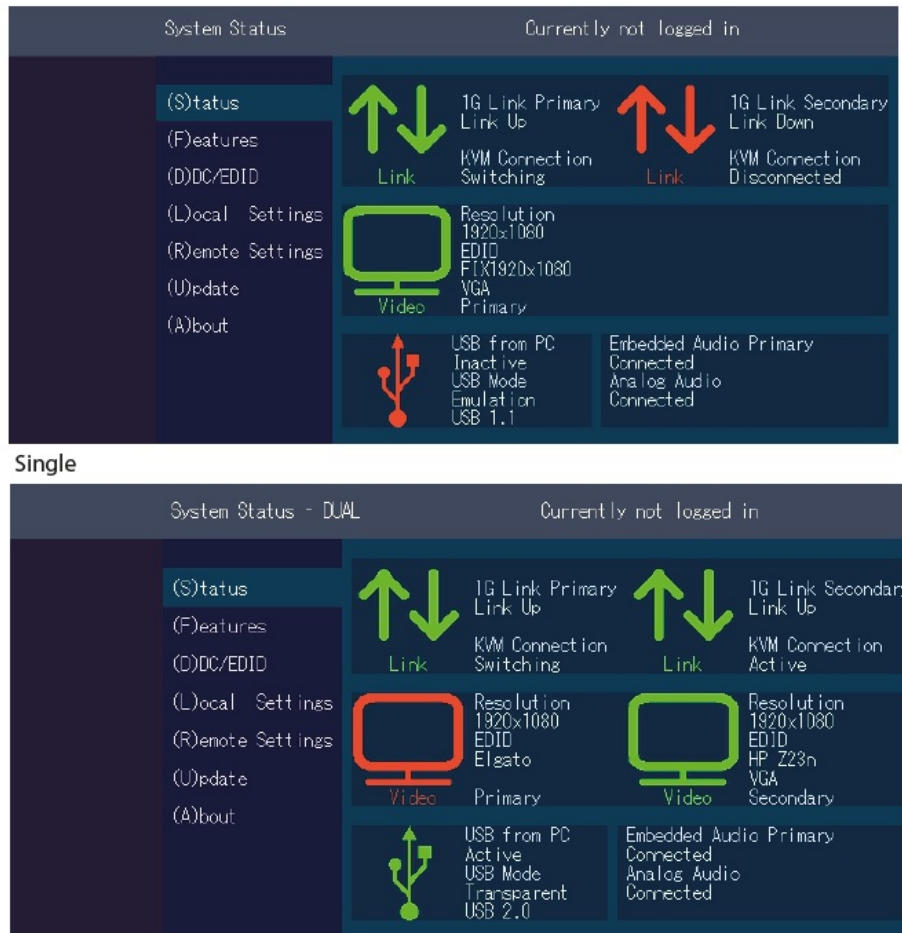
sub-menus.

3. To open a sub-menu press the applicable key.



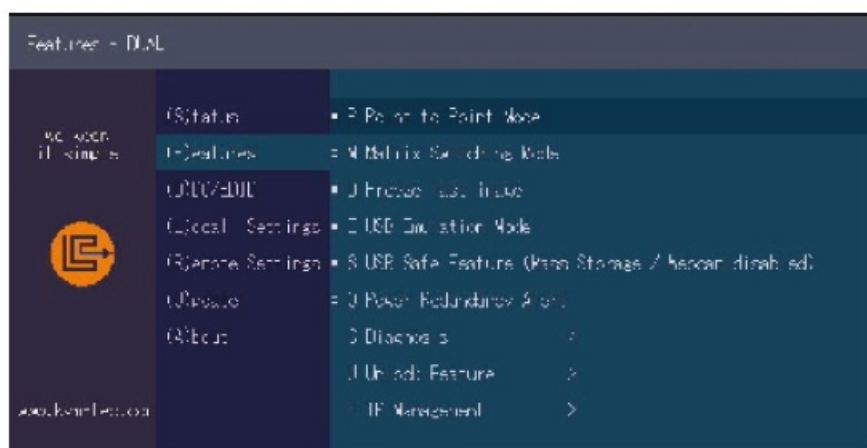
- Main menu Short Cuts
- Status Overview
- Update Flash FW
- Features Overview
- DDC Option
- Local Settings
- Remote Settings
- An About Overview
- Exit
- Menu Status /current status
- Firmware Updates
- Settings Features
- DDC Option Fix
- settings 1020 x 1080
- Settings Local
- Settings Remote
- Overview Upgrades
- Upgrades
- Exit

SYSTEM STATUS



In the status overview menu, the current status of the extender connection is displayed. It provides information on the connection itself as well as the resolution of the video channel, and USB status. The enabled options and the current firmware version is displayed in the left top corner. Link status shows whether there is a physical connection available. Connected indicates if KVM data is currently able to be transmitted. Video and USB show if data is currently being transmitted.

VIEWING THE FIRMWARE VERSION



Under „A“ – About the currently installed firmware version of the remote (CON) and local (CPU) Extender is displayed (e.g. ,4267“)

POINT TO POINT

You can switch the Point-to-Point mode on and off by pressing the „P“ key

ATTENTION – if the point-to-point mode is activated, the switching mode cannot be activated



Features Menu

- Point-to-Point Mode
- Matrix Switching Mode
- Freeze the last Image
- USB Emulation Mode USB Save
- Feature Power Redundancy
- Alert Diagnosis
- Unlock Features
- IP Management
- Enabled/Disabled
- (Point to Point Point to Point excludes itself with Matrix mode
- Disabled/Enabled (mass storage usable)
- Disabled/Enabled Alert System
- Diagnosis menu
- Unlock Features
- IP Management

MATRIX SWITCHING MODE

By pressing the „M“ button you can switch the Matrix Switching Mode off and on

KVM-TEC	IHSE GmbH	IHSE USA LLC	IHSE GMBH Asia	IHSE China Co.,Ltd
Gewerbepark	Benzstr.1	1 Corp.Dr.Suite	158Kallang	Room 814
Mitterfeld 1 A	88094 Oberteuringen	Cranburry NJ 08512	Way,#07-13A	Building 3, Kezhu Road
2523 Tattendorf	Germany	USA	349245 Singapore	Guangzhou PRC
Austria				
www.kvm-tec.com	www.ihse.com	www.ihseusa.com	www.ihse.com	www.ihse.com.cn

Documents / Resources

	kvm-tec KT-6026R MAXflex Full HD KVM Extender [pdf] Instructions KT-6026R, MAXflex, Full HD KVM Extender, MAXflex Full HD KVM Extender, KT-6026R Full H D KVM Extender, KT-6026R MAXflex Full HD KVM Extender, HD KVM Extender, KVM Extender, Extender
--	---

References

-  [Technology leader made in Germany | IHSE - KVM & Beyond](#)
-  [IHSE - KVM -IP KVM - KVM -IHSE](#)
-  [Home - IHSE](#)
-  [Kvm-tec.com: KVM Extender over IP - Matrix Switching Systeme](#)

Manuals+.