

kvm-tec KT-6024L MAXflex Full HD KVM Extender Instructions

[Home](#) » [kvm-tec](#) » kvm-tec KT-6024L MAXflex Full HD KVM Extender Instructions 

Contents

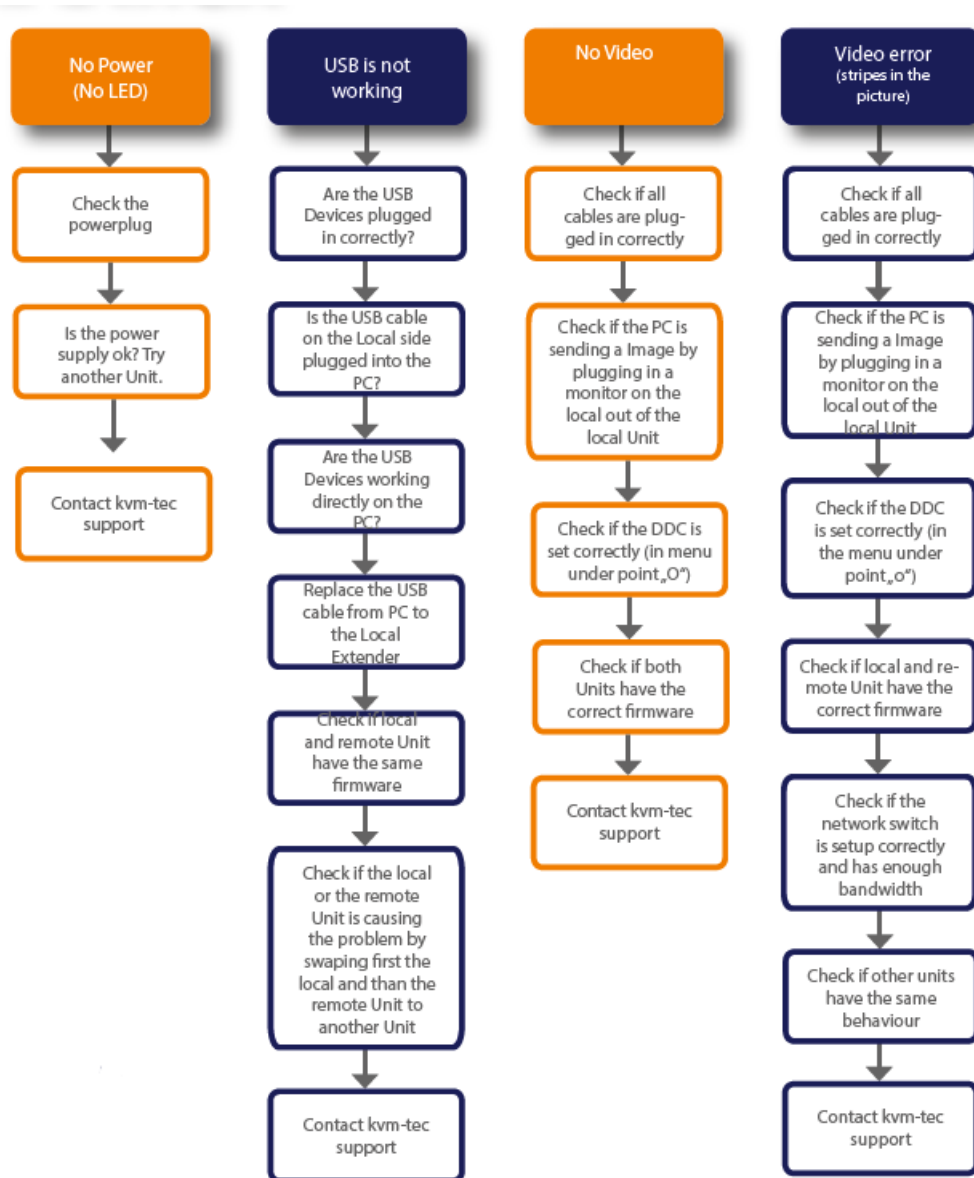
- 1 kvm-tec KT-6024L MAXflex Full HD KVM Extender
- 2 Open OSD menu Open OSD menu
- 3 Quick Installation Maxflex Dual local / CPU – remote / CON
- 4 SYSTEM STATUS
- 5 Documents / Resources
 - 5.1 References
- 6 Related Posts

kvm-tec

kvm-tec KT-6024L MAXflex Full HD KVM Extender



We are here for you to answer your questions about installation.



DDelivery Cy Cononttent LLOCAL/CPU UnitAL/CPU Unit

- 1 x M1 x MA2 local (A2 local (CPU)CPU)
- 1 x w1 x wall poll power supply 12V 1A (INT or EU-plug)er supply 12V 1A (INT or EU-plug) 2 x DVI – DVI cable 1,8m/5.9ft2 x DVI – DVI cable 1,8m/5.9ft
- 1 x USB cable 1,8m/5.9ft1 x USB cable 1,8m/5.9ft
- 4 x rubber f4 x rubber feet

REMOTE/CTE/CON Unit ON Unit

- 1 x M1 x MA2 rA2 remote mode (e (CON)ON)
- 1 x w1 x wall poll power supply 12V 1A (INT EU-plug)er supply 12V 1A (INT or EU-plug) 4 x rubber f4 x rubber feet

Open OSD menu Open OSD menu

the OSD main menu is opened with the standard short shortcut: 5 x cut: 5 x ALALT GrT Gr the fiction: the first 20 secret 20 seconds 5 x Sounds 5 x Scroll will always in case, in case the short shortcut cut was fas for got gotten.)en.) Switwitching list ching list : C: CTRL+ALTRL+ALT+PRINTT+PRINT ChangChanging the shoring the short cuts in the OSD menu in the OSD menu Go to the Ro the Remotemote Se Settings and then settings and then Navi navigate te to Keyboard Keyboard Short Shortt-cutout.

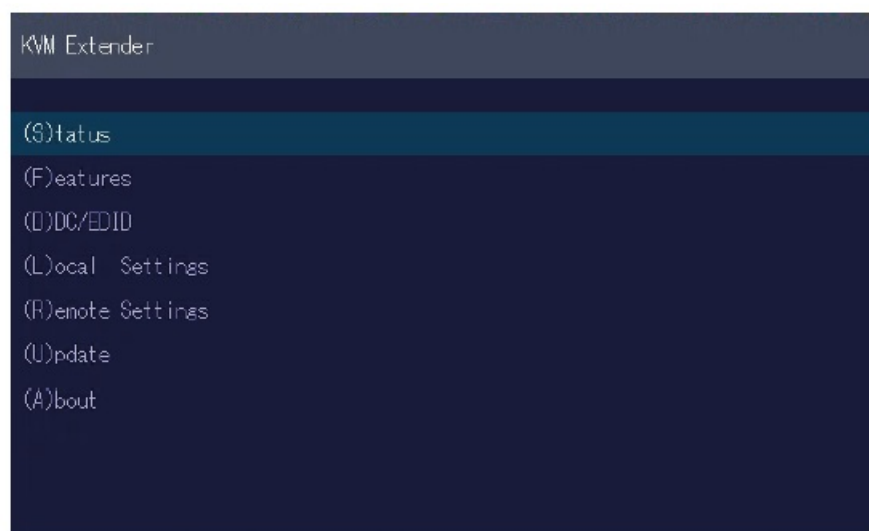
Quick Installation Maxfl ex Dual local / CPU – remote / CON

1. Connect the CON / Remote and the CPU / Local Unit to the included 12V 2A power supply.
2. Now connect the USB cable to a USB port on your PC and connect the other end of the USB cable to the CPU / Local Unit. Connect the keyboard and mouse to the CON / Remote Unit.
3. Connect the CPU / Local and the CON / Remote Unit with a network cable.
4. Now connect the DVI cable to the DVI socket of the PC and the other end to the DVI socket of the CPU / Local Unit (PC-in).
5. Now connect the DVI cable to the DVI socket of the PC and the other end to the DVI socket of the CPU / Local Unit (PC-in 2). Then connect the monitor with the DVI cable to the CON / Remote Unit.
6. Connect PC audio/out with the audio cable to local audio/in. Connect audio/out via the audio cable
7. Almost done! Connect the audio cable local audio/out to the PC Audio in and remote audio/in with the audio cable to the microphone
8. Using a switch: Connect all endpoints to the switch. Ensure that all connections have a bandwidth of 1Gbit/sec. For video sharing the network has to support IGMP snooping. Have fun – your KVM-tec Extender is now in use for many years (MTBF approx.10 years)

USING THE ON-SCREEN MENU

Use the monitor and keyboard to use the main menu. To access the main menu:

1. Make sure the extenders, the monitors, and the computer are switched on.
2. Press the ALT+GR key on your keyboard quickly five times.
3. To open a sub-menu press the applicable key.



Main Menu

Main menu Short Cuts: S Status Overview U Update Flash FW F Features Overview D DDC Option

Local Settings

Remote Settings A About Overview Q Exit Menu Status /current status Firmware Updates

Settings Features

DDC Option Fix settings 1020 x 1080 Settings Local

Settings Remote

Overview Upgrades Upgrades Exit

SYSTEM STATUS

System Status

Currently not logged in

(S)tatus

(F)eatures

(D)DC/EDID

(L)ocal Settings

(R)emote Settings

(U)pdate

(A)bout

↑↓

Link

1G Link Primary Link Up

KVM Connection Switching

↑↓

Link

1G Link Secondary Link Down

KVM Connection Disconnected

Video

Resolution 1920x1080

EDID FI1920x1080

VGA Primary

USB

USB from PC Inactive

USB Mode Emulation

USB 1.1

Embedded Audio Primary Connected

Analog Audio Connected

Single

System Status - DUAL

Currently not logged in

(S)tatus

(F)eatures

(D)DC/EDID

(L)ocal Settings

(R)emote Settings

(U)pdate

(A)bout

↑↓

Link

1G Link Primary Link Up

KVM Connection Switching

↑↓

Link

1G Link Secondary Link Up

KVM Connection Active

Video

Resolution 1920x1080

EDID Elgato

Primary

Video

Resolution 1920x1080

EDID HP Z23n

VGA Secondary

USB

USB from PC Active

USB Mode Transparent

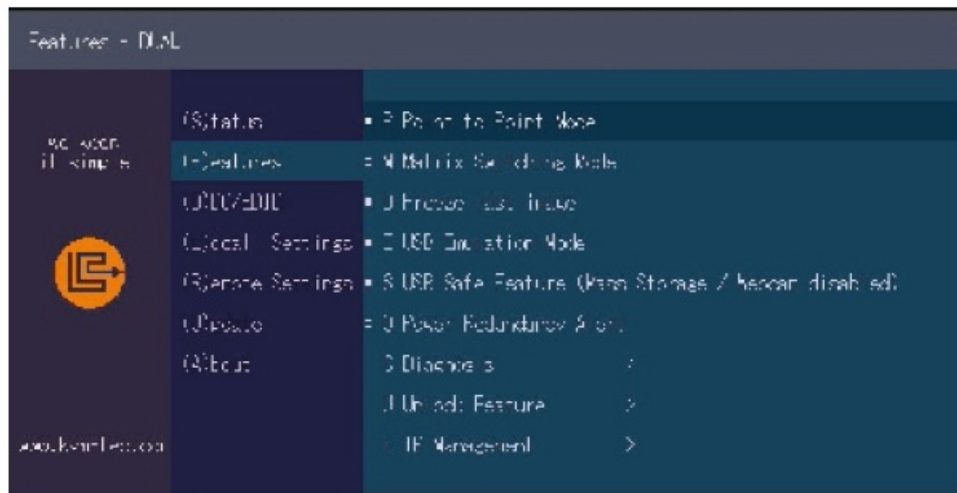
USB 2.0

Embedded Audio Primary Connected

Analog Audio Connected

VIEWING THE FIRMWARE VERSION

Under „A“ – About the currently installed firmware version of the remote (CON) and local (CPU) Extender is displayed (e.g. ,4267')



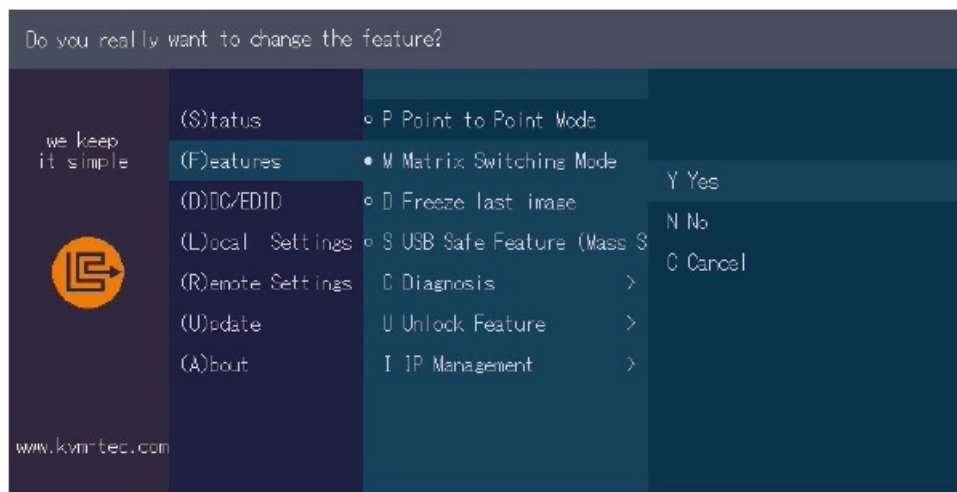
Features Menu

- Point-to-Point Mode
- Matrix Switching
- Mode Freeze last Image
- USB Emulation Mode
- USB Save Feature
- Power Redundancy
- Alert Diagnosis
- Unlock Features
- IP Management
- Enabled/Disabled
- (Point to Point Point to Point excludes itself with
- Matrix mode
- Disabled/Enabled
- (Disabled)Disabled/Enabled
- (Disabled) Disabled/Enabled (mass storage usable)
- Disabled/Enabled Alert System
- Diagnosis menu
- Unlock Features
- IP Management

POINT TO POINT

You can switch the Point-to-Point mode on and off by pressing the „P“ key

ATTENTION – if the point-to-point mode is activated, the switching mode cannot be activated




MATRIX SWITCHING MODE

By pressing the „M“ button you can switch the Matrix Switching Mode off and on

KVM-TEC	IHSE GmbH	IHSE USA LLC	IHSE GMBH Asia	IHSE China Co.,Ltd
Gewerbepark	Benzstr.1	1 Corp.Dr.Suite	158Kallang	Room 814
Mitterfeld 1 A	88094 Oberteuringen	Cranburry NJ 08512	Way,#07-13A	Building 3, Kezhu Road
2523 Tattendorf	Germany	USA	349245 Singapore	Guangzhou PRC
Austria				
www.kvm-tec.com	www.ihse.com	www.ihseusa.com	www.ihse.com	www.ihse.com.cn

Documents / Resources

	kvm-tec KT-6024L MAXflex Full HD KVM Extender [pdf] Instructions KT-6024L, MAXflex, Full HD KVM Extender, MAXflex Full HD KVM Extender, KT-6024L Full HD KVM Extender, KT-6024L MAXflex Full HD KVM Extender, HD KVM Extender, KVM Extender, Extender
---	--

References

- [IHSE - Technology leader made in Germany | IHSE - KVM & Beyond](#)
- [IHSE - KVM -IP KVM - KVM -IHSE](#)
- [Home - IHSE](#)
- [Kvm-tec.com: KVM Extender over IP - Matrix Switching Systeme](#)