



KUZCO TR10015 Two Fixed Track Fixture Instruction Manual

[Home](#) » [KUZCO](#) » KUZCO TR10015 Two Fixed Track Fixture Instruction Manual 



TR10015 Two Fixed Track Fixture Instruction Manual

Contents

- [1 START FROM HERE](#)
- [2 Documents / Resources](#)
 - [2.1 References](#)
- [3 Related Posts](#)

START FROM HERE

- Make sure the power is completely off at the fuse box.
- Have your fixture installed by a qualified licensed electrician
- Prepare everything in a clear area.
- Wear gloves at all times during this installation.
- Read the instructions carefully before you start assembly.
- Keep this instruction sheet for future reference.

Technical Support: 1-855-855-8926

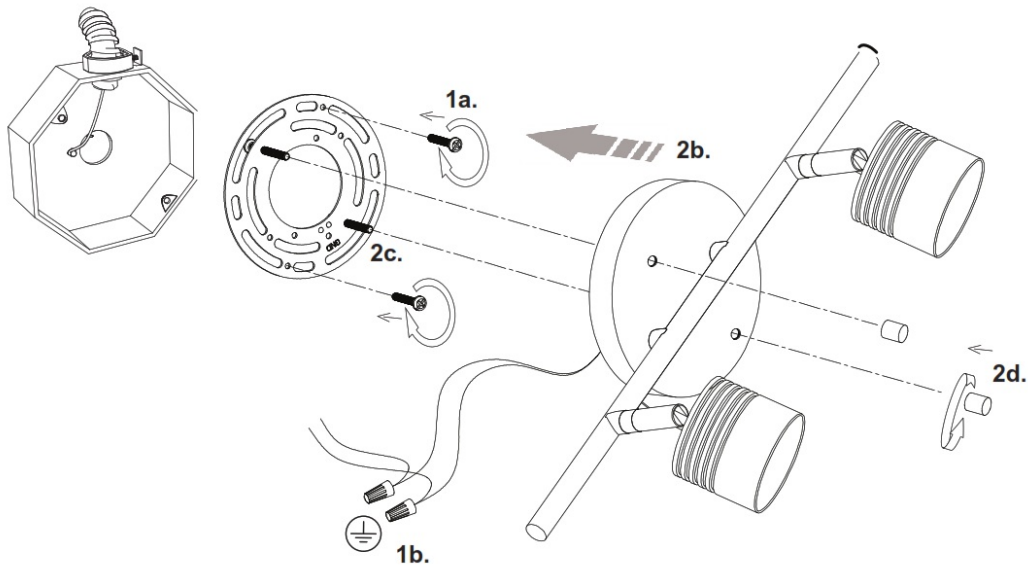
Please Note:

- All Kuzco LED fixtures are to come with pre-wired LED module(s).
- Unless instructed to do so, please do not touch any part of the LED module(s) as any unnecessary contact with

the module could cause permanent damage.

- For dimming, an ELV (Electronic Low Voltage) dimmer is required.

1. Remove the fixture from its original packaging and remove the canopy mounting plate from within the hardware package. Using the two mechanical screws, (1a) secure the mounting plate to the junction box. Now attach all wiring (1b) with the provided markets (white to white “N”, black to black “L”, ground to ground “G”).
2. Attach the canopy (2b) to the mounting plate (1a), and align the bolt studs on the canopy (2c) to the two holes on the mounting plate. Once aligned, screw in the two decorative nuts (2d) provided to secure the fixture to the wall. Careful, not over-tighten.
3. You have now completed the installation of your fixture, please enjoy.



KUZCO

19054 28th Avenue Surrey, BC Canada V3Z 6M3

T: 604 538 7162 |

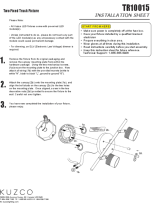
TF: 1-855 85 KUZCO

F: 604 538 7196

W: kuzcolighting.com

20181127

Documents / Resources

	KUZCO TR10015 Two Fixed Track Fixture [pdf] Instruction Manual TR10015, Two Fixed Track Fixture, Track Fixture, Two Fixed, Fixture
---	---

References

- [Kuzco Lighting – Modern Contemporary Lighting.](#)

