



KURYAKYN 1660 Chrome Multi Purpose Driver and Passenger Backrest Instruction Manual

[Home](#) » [KURYAKYN](#) » KURYAKYN 1660 Chrome Multi Purpose Driver and Passenger Backrest Instruction Manual 



1660 Chrome Multi Purpose Driver and Passenger Backrest Instruction Manual

Contents

- [1 1660 Chrome Multi Purpose Driver and Passenger Backrest](#)
- [2 LIMITED WARRANTY](#)
- [3 RETURN POLICY](#)
- [4 Documents / Resources](#)
 - [4.1 References](#)
- [5 Related Posts](#)

1660 Chrome Multi Purpose Driver and Passenger Backrest

MULTI-PURPOSE DRIVER & PASSENGER BACKREST

1660 CHROME OR 1661 BLACK & CHROME

THANK YOU FOR CHOOSING KURYAKYN!

Protect yourself and others from possible injury and property damage or loss. Pay close attention to all instructions, warnings, cautions, and notices regarding the installation, use, and care of this product.



WARNING THIS INDICATION ALERTS YOU TO THE FACT THAT IGNORING THE CONTENTS DESCRIBED HEREIN CAN RESULT IN POTENTIAL DEATH OR SERIOUS INJURY.



CAUTION THIS INDICATION ALERTS YOU TO THE FACT THAT IGNORING THE CONTENTS DESCRIBED HEREIN CAN RESULT IN MINOR OR MODERATE POTENTIAL INJURY.

NOTICE THIS INDICATION ALERTS YOU TO THE FACT THAT IGNORING THE CONTENTS DESCRIBED

HEREIN MAY NEGATIVELY AFFECT PRODUCT PERFORMANCE AND FUNCTIONALITY OR DAMAGE THE PRODUCT ITSELF OR THE PRODUCT TO WHICH IT IS BEING ATTACHED.

ENSURE THAT THE FOLLOWING PARTS HAVE BEEN INCLUDED IN THE KIT:

- 1 Multi-Purpose Backrest
- 2 Shoulder Washers
- 2 5/16"-18 X 7/8" Countersunk Socket Head Cap Screws

YOU WILL ALSO NEED:

Hex bit set and ft-lbs torque wrench

NOTICE THESE INSTALLATION INSTRUCTIONS CONTAIN IMPORTANT INFORMATION. ENSURE THE END USER RECEIVES THIS COPY AND IS AWARE OF ITS IMPORTANCE FOR FUTURE USE.

INSTALLATION OF THIS DRIVER/PASSENGER BACKREST REQUIRES THE SEPARATE PURCHASE OF KURYAKYN FIXED MOUNTS FOR YOUR MODEL OF MOTORCYCLE. INSTALLATION INSTRUCTIONS FOR THE DRIVER/PASSENGER BACKREST ARE INCLUDED WITH THE FIXED MOUNTS AND WILL USE THE HARDWARE INCLUDED WITH THIS BACKREST.

NOTICE DUE TO THE GREAT VARIETY OF SEATS AVAILABLE, TO DETERMINE THE CORRECT MOUNT HEIGHT NEEDED, MEASURE THE THICKNESS OF THE FRONT OF THE PASSENGER SEAT. MEASURE FROM THE TOP OF THE REAR FENDER TO THE TOP OF THE PASSENGER SEAT AS SEEN IN PIC 2. OVER 6 INCHES NEED THE TALL MOUNTS, 6 INCHES AND UNDER WILL USE THE SHORT MOUNTS.



PIC 1



PIC 2



PIC 3

PIC 4

STEP 1 Read and understand all steps in the instructions before starting the installation. Park the motorcycle on a hard, level surface and turn off the ignition. Let motorcycle cool.

STEP 2 Install the fixed or quick-detach mounts (sold separately) for your model of motorcycle, using the installation instructions provided with them.

STEP 3 Refer to PIC 3 and 4. Locate provided Shoulder Washers and Flat Head Cap Screws. Insert a screw through the beveled side of each of the mount washers.

STEP 4 Locate provided Multi-Purpose Backrest. Test fit the backrest between the installed fixed mounts. The backrest should slide easily between the fixed mounts.

STEP 5 Refer to PIC 5. Align the mounting holes of the backrest with the installed fixed mounts. Insert the hardware assembly, from Step 3, through the aligned mounting holes; one on each side. Fully tighten hardware. If these fasteners are loosened or removed, see WARNING! below.

TORQUE VALUE FOR BACKREST SCREWS: 15 FT-LBS (20.34 Nm)

PIC 5



⚠ WARNING BOTH PIVOT/HINGE SCREWS MUST HAVE THREADLOCK COMPOUND RE-APPLIED AND RE-TORQUED ONCE REMOVED AFTER INITIAL INSTALLATION. FAILURE TO DO SO MAY RESULT IN UNINTENDED LOOSENING AND MAY CAUSE SERIOUS INJURY OR DEATH. THE FEMALE THREADS IN THE MULTI-PURPOSE BACKREST AND THE THREADS ON THE REMOVED SCREWS WILL NEED TO BE CLEANED TO REMOVE ANY THREADLOCK RESIDUE BEFORE REINSERTING. RE-APPLY LOCTITE® THREADLOCK BLUE 242® OR EQUIVALENT, RE-TORQUING TO 15 FT-LBS (20.3 Nm) USING A TORQUE WRENCH AND 3/16" ALLEN/HEX KEY ATTACHMENT. LET CURE PER THE THREADLOCK MANUFACTURERS INSTRUCTIONS AFTER INSTALLATION. KURYAKYN REQUIRES CHECKING ALL BACKREST ATTACHING FASTENERS TO THE TORQUE SPECIFICATIONS DEFINED IN THESE INSTRUCTIONS EVERY 3,000 TO 5,000 MILES.

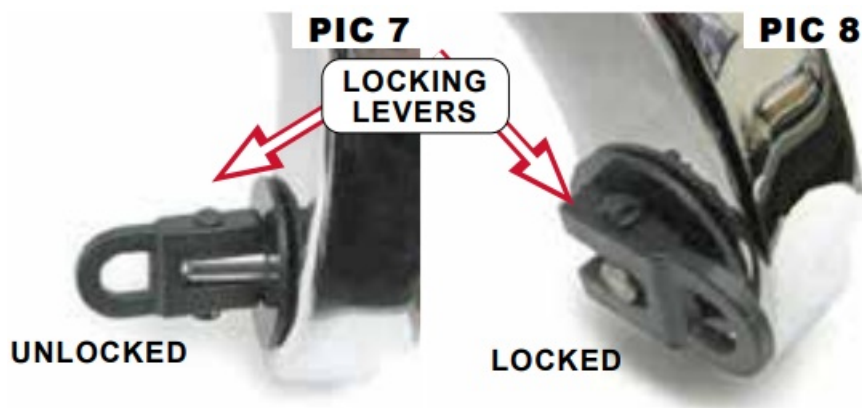
PIC 6



STEP 6

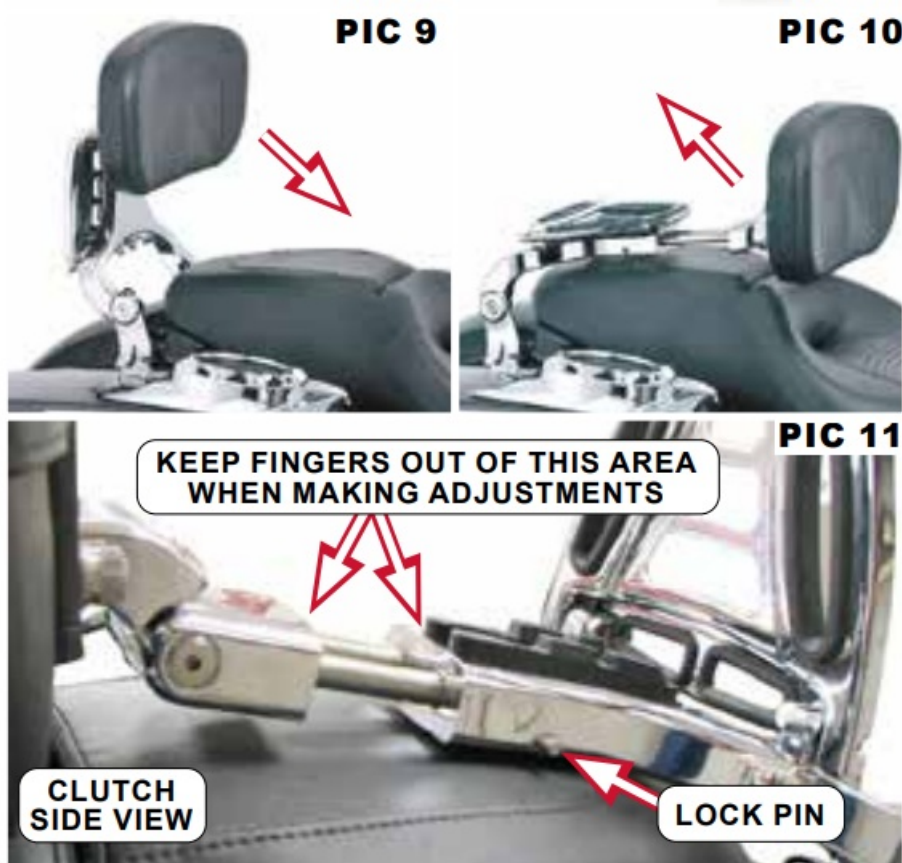
TO ADJUST THE RACK UP OR DOWN WHILE THE BACKREST IS IN THE PASSENGER POSITION: Refer to

PIC 6. Pull down the luggage rack to release it from the rubber catch. To stow it, lift up and press it firmly to “sink” it into the rubber catch.



STEP 7

TO ADJUST THE BACKREST TO THE PASSENGER POSITION OR LOWER IT TO THE DRIVER POSITION:
Refer to PIC 7 through 11. Unlock the locking levers by folding them straight out and away from the backrest arms. Lower or raise the backrest to the desired location. Lock the locking levers by folding them in, flush to the backrest arms.



⚠ CAUTION AVOID POTENTIAL PINCH OR CRUSH INJURIES! ONLY PERFORM THE FOLLOWING PROCEDURE WITH THE BACKREST IN THE LOWERED (DRIVER) POSITION.

⚠ CAUTION DO NOT EXTEND OR RETRACT THE BACKREST IN THE UPRIGHT POSITION! KEEP FINGERS AWAY FROM THE AREA BETWEEN THE PAD MOUNT AND THE BACKREST WHEN RETRACTING THE PAD ASSEMBLY. THE WEIGHT OF THE BACKREST COULD QUICKLY RETRACT IT CAUSING INJURY.

STEP 8

TO ADJUST THE BACKREST FORWARD OR BACK WHILE THE BACKREST IS IN THE DRIVER POSITION:
Refer to PIC 11. Depress the lock pin on the clutch side and pull the pad to the desired position. Make sure when

the pad is in the desired position, the lock pin is fully extended.

STEP 9

TO ADJUST THE BACKREST PAD UP OR DOWN WHILE THE BACKREST IS IN THE PASSENGER POSITION: Refer to PIC 12. To adjust the Backrest pad up or down once it is in the desired upright or forward position, loosen the two Knurled/Slotted screws and slide the pad up or down to the desired position. When the pad is in the desired position, tighten the Knurled/Slotted screws securely. PIC 3



⚠ WARNING THIS DRIVER/PASSENGER BACKREST IS NOT A SAFETY RESTRAINING DEVICE. FAILURE TO HOLD ONTO THE MOTORCYCLE MAY RESULT IN INJURY OR DEATH.

NOTICE DO NOT OPERATE THE MOTORCYCLE WITH THE BACKREST EXTENDED BEYOND THE SECOND NOTCH WHEN IN THE UPRIGHT PASSENGER POSITION TO PREVENT BENDING OF THE INNER ADJUSTMENT RODS!

⚠ WARNING THE LUGGAGE RACK HAS A 10 POUND LOAD CAPACITY. IT IS UP TO THE RIDER TO USE THE RACK IN A SAFE AND PROPER MANNER. OVERLOADING OR USING THE RACK IMPROPERLY MAY RESULT IN LOSS OF CONTROL, WHICH MAY RESULT IN SEVERE DAMAGE TO THE MOTORCYCLE AND/OR SERIOUS INJURY OR DEATH TO THE RIDER AND/OR THEIR PASSENGER. KURYAKYN IS NOT RESPONSIBLE FOR ANY DAMAGE, LOSS, OR INJURY CAUSED BY EXCEEDING THE LOAD CAPACITY.

⚠ CAUTION ENSURE THAT THE INSTALLATION OF THIS PRODUCT DOES NOT INTERFERE WITH THE PROPER OPERATION OF THE MOTORCYCLE BEFORE RIDING.

NOTICE IT IS THE INSTALLER'S RESPONSIBILITY TO ENSURE THAT ALL OF THE FASTENERS (INCLUDING PRE-ASSEMBLED) ARE TIGHTENED BEFORE OPERATION OF THE MOTORCYCLE. KURYAKYN WILL NOT PROVIDE WARRANTY COVERAGE ON PRODUCTS OR COMPONENTS LOST DUE TO IMPROPER INSTALLATION OR LACK OF MAINTENANCE. PERIODIC INSPECTION AND MAINTENANCE ARE REQUIRED ON ALL FASTENERS.

LIMITED WARRANTY

Kuryakyn warrants that any Kuryakyn products sold hereunder, shall be free of defects in materials & workmanship for a period of one (1) year from the date of purchase by the consumer excepting the following provisions:

1. Kuryakyn shall have no obligation in the event the customer is unable to provide a receipt showing the date the

customer purchased the product(s).

2. The product must be properly installed, maintained & operated under normal conditions.
3. Kuryakyn shall not be liable for any consequential & incidental damages, including labor & paint, resulting from failure of a Kuryakyn product, failure to deliver, delay in delivery, delivery in nonconforming condition, or for any breach of contract or duty between Kuryakyn & a customer.
4. Kuryakyn products are often intended for use in specific applications. Kuryakyn makes no warranty if a Kuryakyn product is used in applications other than intended.
5. Kuryakyn electrical products are warranted for one (1) year from the date of purchase by the consumer. L.E.D.'s contained in components of Kuryakyn products will be warranted for defects in materials & workmanship for 3 years from the date of purchase whereas all other components shall be warranted for one (1) year.
6. All warranty claims must be directed to the place of purchase. Merchandise sold through internet auction sites or any other unauthorized reseller shall not carry a Kuryakyn warranty. If unsure, please contact the place of purchase to verify they are an authorized Kuryakyn reseller.

RETURN POLICY

Merchandise determined to be defective may be returned up to one year from the date of purchase. Returns must be processed through original seller.

Returned merchandise for any other reason other than warranty claims must be in like new condition & subject to a 20% restocking fee. All returns are subject to inspection for determination of full or partial credit. Any returned part that shows evidence of being used or installed contrary to manufacturer's instructions, &/or subjected to improper handling, packaging or return shipping by the customer, will not be eligible for exchange, refund or warranty consideration. All returned electrical items will be inspected & tested. If electrical item is deemed functional, no credit will be issued & item will be returned.

All sales are final on discontinued or closeout merchandise.

©2015 KURYAKYN HOLDINGS, LLC ALL RIGHTS RESERVED

KURYAKYN, KURYAKYN K logo and the marks appearing on this instruction sheet are registered and common law trademarks of Kuryakyn Holdings except noted third-party trademarks. A full listing of trademarks and trademark registrations owned by Kuryakyn Holdings can be found at www.kuryakyn.com/legal-notice.

Emissions Notice: The California Air Resources Board (CARB) does not permit the use of aftermarket emission-related parts(s) that alter the performance of OEM emission-related devices unless CARB has issued an Executive Order, other than on racing vehicles on closed courses. Check your local laws and manufacturer's information.

Listed Manufacturers and product model names are for reference only. All product and company names are trademarks or registered trademarks of their respective holders. Use of them does not imply any affiliation with or endorsement by them. All specifications are subject to change without notice.

For additional information on third-party product and company names, please consult our Web page at www.kuryakyn.com/legal-notice

PAGE 4 301660


DPF-MRK-003 REV A 6/25/21

KURYAKYN.COM

866 277 9598 | **INFO@KURYAKYN.COM**

454 COUNTY ROAD VV SOMERSET, WI 54025



	<p>KURYAKYN 1660 Chrome Multi Purpose Driver and Passenger Backrest [pdf] Instruction Manual</p> <p>1661 Black, 1661 Chrome, 1660 Chrome Multi Purpose Driver and Passenger Backrest, 1660 Chrome, Multi Purpose Driver and Passenger Backrest, Purpose Driver and Passenger Backrest, Driver and Passenger Backrest, Passenger Backrest, Backrest</p>
--	---

References

-  [About Us - Legal Notice | Motorcycle Parts and Accessories for Harley, Metric & Goldwing | Kuryakyn](#)