



## KUMATSUGEN ATS4000-F Single Phase Diesel Generator Automation System Owner's Manual

[Home](#) » [KUMATSUGEN](#) » KUMATSUGEN ATS4000-F Single Phase Diesel Generator Automation System Owner's Manual 

### KUMATSUGEN ATS4000-F Single Phase Diesel Generator Automation System



## Contents

- 1 SAFETY SYMBOLS
- 2 SAFETY INSTRUCTIONS
- 3 CONNECTION
- 4 STARTING THE UNIT
- 5 TEST OPERATION & AUTOMATIC OPERATION
- 6 ENVIRONMENTAL DISPOSAL
- 7 WARRANTY
- 8 CUSTOMER SUPPORT
- 9 Documents / Resources
  - 9.1 References

## SAFETY SYMBOLS



Risk of electric shock.



Fire hazard.



Explosion hazard.



Do not expose the unit to rain or moisture.

## SAFETY INSTRUCTIONS



**Warning:** Read the manual carefully before use. Failure to follow the warnings and instructions may result in damage to the unit, physical injury and/or damage to property. Store the manual in a safe place for future reference.

### General precautions

- Inspect the unit for any signs of wear, corrosion, or damage regularly. Maintenance and repairs should only be carried out by qualified service technicians.
- The unit may only be operated by trained personnel.
- Make sure the unit is grounded before use.
- Never attempt to modify or tamper with the unit, wiring, or generator.
- Regularly inspect all wiring connections and fasteners to ensure they remain tight and secure.
- Make sure the unit and related equipment are in locations with adequate airflow to avoid overheating

### Work area

- Do not use the unit near flammable gases, liquids or dust.
- Ensure that the work area is always kept clean and well lit to avoid injuries.
- Keep unauthorized persons, children and animals away from the unit while it is in operation.

### Electrical safety

- Avoid operating the unit in high-humidity environments. Do not allow moisture to enter the unit, as this increases the risk of electric shock.
- Avoid direct contact with grounded surfaces (pipes, radiators, etc.).
- Be careful when working with the power cord. Replace it immediately in case of damage to avoid the risk of electric shock.
- All electrical connections must be carried out by a certified electrician in accordance with all local electrical codes and regulations.
- Do not operate the unit with your feet in the water, on wet or damp soil.
- Do not touch live parts of the unit.
- Keep all electrical equipment dry and clean. Replace damaged or worn wiring. Worn, damaged, or rusted terminals must be replaced as well.
- Make sure that the generator and ATS are compatible in terms of voltage and wattage.

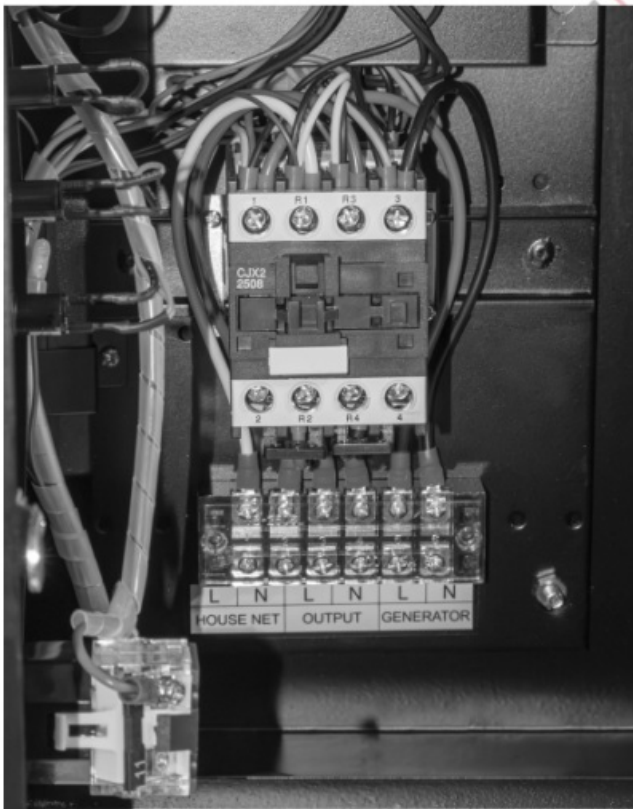
### Personal safety

- Do not operate the unit when you are tired or under the influence of drugs, alcohol or medication. During operation, inattention can cause serious injury.
- Make sure there are no foreign objects on the unit when it is turned on.
- Do not overload the unit, use it for its intended purpose only.

**Attention:** The total power of the load connected to the ATS system must not exceed the maximum permissible power for this unit.

### CONNECTION

**Warning:** Before carrying out electrical connections, the mains switch must be turned off.



**Fig. 1**

1. Connect the generator's output power supply cable to the socket on the generator panel "AC220V" with a plug\*\*. (Fig. 2)



**Fig. 2**

2. Connect the other end of the power supply cable to the "GENERATOR" position on the ATS panel. (Fig. 3, Fig. 8)



**Fig. 3**



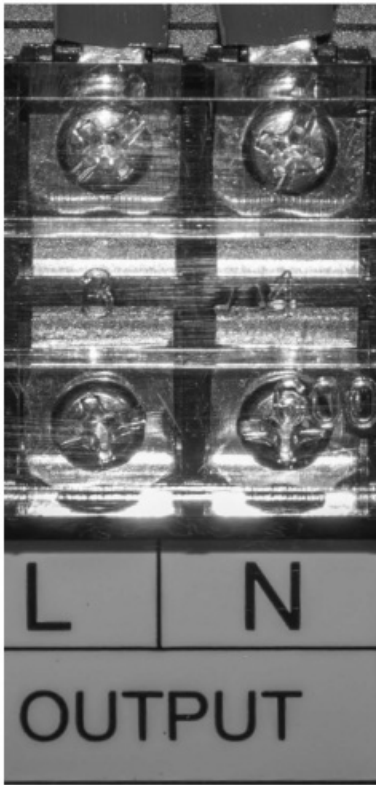
**Fig. 8**

3. Connect the mains supply cable\*\* to the "HOUSE NET" position on the ATS panel. **(Fig. 4, Fig. 8)**



**Fig. 4**

4. Connect the power supply cable from the ATS output "OUTPUT" to the mains electrical panel\*\*. **(Fig. 5, Fig. 8)**



**Fig. 5**

5. Connect one plug of the control cable\* to the “ATS” input on the generator panel. (**Fig. 6, Fig. 9**)



**Fig. 6**

- **Warning:** Do not cut or lengthen the control cable.

6. Connect one plug of the control cable\* to the “ATS” socket located at the bottom of the ATS unit. (**Fig. 7, Fig. 9**)



**Fig. 7**



**Fig. 9**

- **Warning:** Do not cut or lengthen the control cable.  
included  
not included

## STARTING THE UNIT

1. Once all electrical connections have been carried out, turn on the mains switch.
2. Check whether the "HOUSE NET" indicator light is on. (**Fig. 10**)



**Fig. 10**

3. Press the button in the "AUTO" position. (**Fig. 11**)





**Fig. 11**

- The ATS unit will now automatically transfer the load from utility power to the generator in case of a power outage
- In case the generator starts after a power outage, the “GENERATOR” indicator light will turn on. **(Fig. 12)**



**Fig. 12**

- When mains power supply is restored, the “HOUSE NET” indicator light will turn on again. The switching occurs automatically and the generator shuts down after a short while.
- In case of any anomaly, if the generator doesn’t start or if it stops working during operation, the “FAILURE” indicator light will turn on. (Fig. 13)



**Fig. 13**

- If the “FAILURE” indicator light turns on, that indicates that there is system damage or malfunction. In this case, the unit must be checked by a qualified technician. Do not attempt to inspect the unit on your own.  
Warning: the mains may be energized.

## **TEST OPERATION & AUTOMATIC OPERATION**

1. In order to test the generator’s operation, press the button in the “MANUAL” position. The generator will start



without the ATS transferring the electrical loads. (Fig. 11)

2. After testing the generator's operation, press the button in the "AUTO" position to turn on automatic operation again. (Fig. 11)

## ENVIRONMENTAL DISPOSAL

In order to avoid damages on transportation, the product has to be delivered in solid packaging. Packaging as well as the unit and accessories are made of recyclable materials and can be disposed accordingly. The tool's plastics components are marked according to their material, which makes it possible to remove environmental friendly and differentiated because of available collection facilities.

### Only for EU countries



■ Do not dispose of electric equipment together with household waste material!

In observance of European Directive 2002/96/EC on waste electrical and electronic equipment and its implementation in accordance with national law, electric tools that have reached the end of their life must be collected separately and returned to an environmentally compatible recycling facility.

- The manufacturer reserves the right to make minor changes to product design and technical specifications without prior notice unless these changes significantly affect the performance and safety of the products. The parts described / illustrated in the pages of the manual that you hold in your hands may also concern other models of the manufacturer's product line with similar features and may not be included in the product you just acquired.
- To ensure the safety and reliability of the product and the warranty validity, all repair, inspection or replacement work, including maintenance and special adjustments, must only be carried out by technicians of the authorized service department of the manufacturer.
- Always use the product with the supplied equipment. Operation of the product with non-provided equipment may cause malfunctions or even serious injury or death. The manufacturer and the importer shall not be liable for injuries and damages resulting from the use of non-conforming equipment.

## WARRANTY

The electrical appliances have been manufactured according to strict standards, set by our company, which are aligned with the respective European quality standards. The electrical appliances of our company are provided with a warranty period of 24 months for non-professional use and 12 months for professional use. The warranty is valid from the date of purchase of the product. Proof of the warranty right is the purchase document of the appliance (retail receipt or invoice). Under no circumstances shall the company cover the relevant cost of spare parts and respective required working hours unless a copy of the purchase document is presented. In case the repair has to be done by our service department the cost of transportation (to and from) is entirely borne by the sender (client). The electrical appliances must be sent for repair to the company or to an authorized workshop in the appropriate way and means of transport.

### WARRANTY EXEMPTIONS AND RESTRICTIONS:


1. Spare parts that wear out naturally as a consequence of being used (brushes, cables, switches, chargers, chucks etc.).
2. Electrical appliances damaged as a result of non-compliance with the instructions of the manufacturer.
3. Electrical appliances poorly maintained.
4. Use of inappropriate accessories.

5. Electrical appliances given to third entities free of charge.
6. Damage due to an electrical connection at a voltage other than that indicated on the appliance plate.
7. Connection to a non-earthed power supply.
8. Change in current voltage.
9. Damage resulting from the use of salty water.
10. Damage or malfunction resulting from improper cleaning procedure of the appliance.
11. Contact of the electrical appliance with chemicals, or damage as a result of moisture or corrosion.
12. Electrical appliances that have been modified or opened by unauthorized personnel.
13. Broken parts/components as a result of inappropriate use.
14. Electrical appliances used for rent.

The warranty covers only the free of charge replacement of the component that presents a manufacturing defect or material failure. In case of lack of a specific spare part the company reserves the right to replace the electrical appliance with another corresponding model. After all warranty procedures have been concluded, the warranty period of the electrical appliance shall not be extended or renewed. The replacement of a spare part, along with repair charge, is covered by a 1 year warranty of good operation, provided that the warranty terms are met. The spare parts or electrical appliances that are replaced remain in the possession of our company. Requirements, other than those mentioned in this warranty form, regarding the repair of electrical appliances or damage thereof, do not apply. Greek law and relative regulations apply to this warranty.


## CUSTOMER SUPPORT



The instructions manual is also available in digital format on our website [www.nikolaoutools.com](http://www.nikolaoutools.com). Find it by entering the product code in the Search “” field.



## Documents / Resources

	<p><a href="#">KUMATSUGEN ATS4000-F Single Phase Diesel Generator Automation System</a> [pdf] Owner's Manual</p> <p>ATS4000-F, ATS4000-F Single Phase Diesel Generator Automation System, ATS4000-F, Single Phase Diesel Generator Automation System, Phase Diesel Generator Automation System, Generator Automation System, Automation System, System</p>
-------------------------------------------------------------------------------------	------------------------------------------------------------------------------------------------------------------------------------------------------------------------------------------------------------------------------------------------------------------------------------------------------------------------------------------------------------

## References

- [User Manual](#)

This website is an independent publication and is neither affiliated with nor endorsed by any of the trademark owners. The "Bluetooth®" word mark and logos are registered trademarks owned by Bluetooth SIG, Inc. The "Wi-Fi®" word mark and logos are registered trademarks owned by the Wi-Fi Alliance. Any use of these marks on this website does not imply any affiliation with or endorsement.