



# KUFATEC Complete Set Active Sound Instruction Manual

[Home](#) » [KUFATEC](#) » KUFATEC Complete Set Active Sound Instruction Manual 



Installation Instructions  
Complete Set Active Sound  
v1.0 (05.11.2020)

## Contents

- [1 Liability Exclusion](#)
- [2 Copyright](#)
- [3 General notes](#)
- [4 Safety Instructions](#)
- [5 Requirements for the intended use](#)
- [6 How to connect a cable to another](#)
- [7 Note Cable Inscription/Color](#)
- [8 Assembly Instructions](#)
- [9 Assembly Note](#)
- [10 Connection Active Sound](#)
- [11 Disassembly front sill trim](#)
- [12 Routing button cable](#)
- [13 Important Information Sound Booster](#)
- [14 Configuration](#)
- [15 Software](#)
- [16 Documents / Resources](#)
  - [16.1 References](#)
- [17 Related Posts](#)

## Liability Exclusion

**Dear Customer,**

Our cable sets are developed according to the connection- and circuit diagrams of the corresponding car manufacturers. Before the serial production, the cable sets will be adjusted and tested on an original vehicle. Therefore, the integration into the vehicle electronics follows the guidelines provided by the car manufacturer. Our installation instructions correspond to what is common in the vehicle electric/electronic regarding the required pre-understanding and the accuracy of the description in text and picture. They have proven its worth in practice hundreds of times.

If you should experience any difficulties while installing one of our products, we are available to provide support via phone or email. Additionally, we offer you to execute the installation in our workshop in Bad Segeberg.

Costs, arising from third parties assigned with the installation of our products, are not being covered by us. We will only compensate the proven costs of the assembly and the costs of the disassembly of the defective product, if it turns out that there is an issue with our product. We limit the reimbursement of costs up to 110 Euro gross and reserve the right to verify the claim in our workshop in Bad Segeberg. The costs for shipping will be refunded if the claim is justified.

We made the experience, that every professional workshop that is equipped with the necessary diagnostic devices, the diagnostic software and the manufacturer's circuit diagrams, is able to find any possible defects in one of our products in a short period of time. The assembly and disassembly including troubleshooting the issue should therefore only take up to 60 minutes.

We also made the experience, that many professional workshops are not able to cope with the manufacturer's circuit diagrams and can't read common wiring schemes, which results in the calculation of several hours for the simplest installations. You will understand the fact, that we can neither take the risk of finding a reliable workshop for you, nor can we finance the training of the employees of your trusted workshop.

Costs, arising from purchasing missing parts or replacements for defective parts from other suppliers, are covered by us up to the amount that the subsequent delivery would have caused (saved expenses). According to the legal warranty law, there would be no reimbursement right, if there was no deadline for the subsequent fulfilling set or the deadline for a subsequent fulfilling hasn't expired.

That being said, if you have any problems during the installation or operation of one of our products call us, write us an email, send us the product or come by our workshop in Bad Segeberg with your vehicle. We are certain, that we can find a solution for any kind of concern.

Kind regards, Your Kufatec GmbH & Co. KG Team

**Copyright**

Our installation and operation instructions, installation plans, software and other written and/or pictured documentations are protected by copyright.

The publication or distribution of these documentations is only permitted with a written approval of Kufatec GmbH & Co. KG.

**General notes**

While developing this product, your personal safety combined with the best operating service, modern design and an up-to-date production technique was especially taken into account.

Unfortunately, despite the utmost care injuries and/or damages might occur due to improper installation and/or use.

Therefore, please read the following instruction manual fully and thoroughly and keep it!

All articles of our production line pass through a 100% check for your safety and security.

We reserve the right to carry out technical changes which serve the improvement at any time.

Depending on each product and purpose, it might be necessary to check each country's legal regulations before installing and starting it.

In case of warranty claims, the product has to be sent back to the seller in the original packaging with the attached bill of purchase and detailed defect's description. Please, pay attention to the manufacturers return requirements (RMA). The legal warranty directions are valid.

The warranty claim as well as the operating permission becomes invalid due to:

- unauthorized changes to the device or accessories which have not been approved or carried out by the

manufacturer or its partners

- opening the casing of the device
- repairing the device on one's own
- improper use/operation
- brute force to the device (drop, willful damage, accident etc.)

During the installation, please pay attention to all safety relevant and legal directions. The device should only be installed by trained personnel or similarly qualified people.

**In case of installation problems or problems concerning the functionality of the device, limit the time to approx. 0,5 hours for mechanical or 1,0 hours for electrical troubleshooting.**

To avoid unnecessary costs and time-loss, send in an immediate support-request, via the Kufatec-contactform (<http://www.kufatec.de/shop/de/infocenter/>). In case of, let us know the following:

- Car chassis number/vehicle identification number
- Five-digit part number of the device
- Exact description of the problem
- Steps you have taken to solve the problem

## **Safety Instructions**

The installation should only be performed by trained personnel. Only perform installations while in a voltage-free state. For example, disconnect the battery. Please pay attention to the instructions provided by the manufacturer.

- Never use bolts or nuts from the car's safety devices for installation. If bolts or nuts from the steering wheel, brakes or other safety devices are used for installation of the device, it may cause an accident.
- Use the device with a DC 12V negative ground car. This device cannot be used in large trucks which use a DC 24V battery. If it is used with a DC 24V battery, it may cause a fire or accident.
- Avoid installing the device in places that would restrict you from driving safe or where it could damage the car's other fittings.
- This device should only be used in combination with the mentioned vehicles. Only connections described within this instructions guide are allowed or required to use for installation.
- For damages caused by faulty installation, unsuitable connections or inappropriate vehicles, Kufatec GmbH & Co. KG assumes no liability.
- We advise you that these devices process data from the MOST protocol of the vehicle. As the supplier of this device we don't know the overall system you are working with. If your device causes damage, due to other changes made to the vehicle, Kufatec GmbH & Co. KG assumes no liability.
- Kufatec GmbH & Co. KG supplier does not guarantee the use of the product for changes within a new vehicle series.
- If the car manufacturers don't agree with the installation of our device by reason of warranty, Kufatec GmbH & Co. KG assumes no liability. Please, check conditions and warranty before you begin the installation.
- Kufatec GmbH & Co. KG reserves the right to change the device specifications without notice.
- Subject to errors and changes.

## Requirements for the intended use

Only use this device in its intended area.

In case of unprofessional installation, improper use or modification, the permission for the operation and the warranty claim will expire.

## How to connect a cable to another

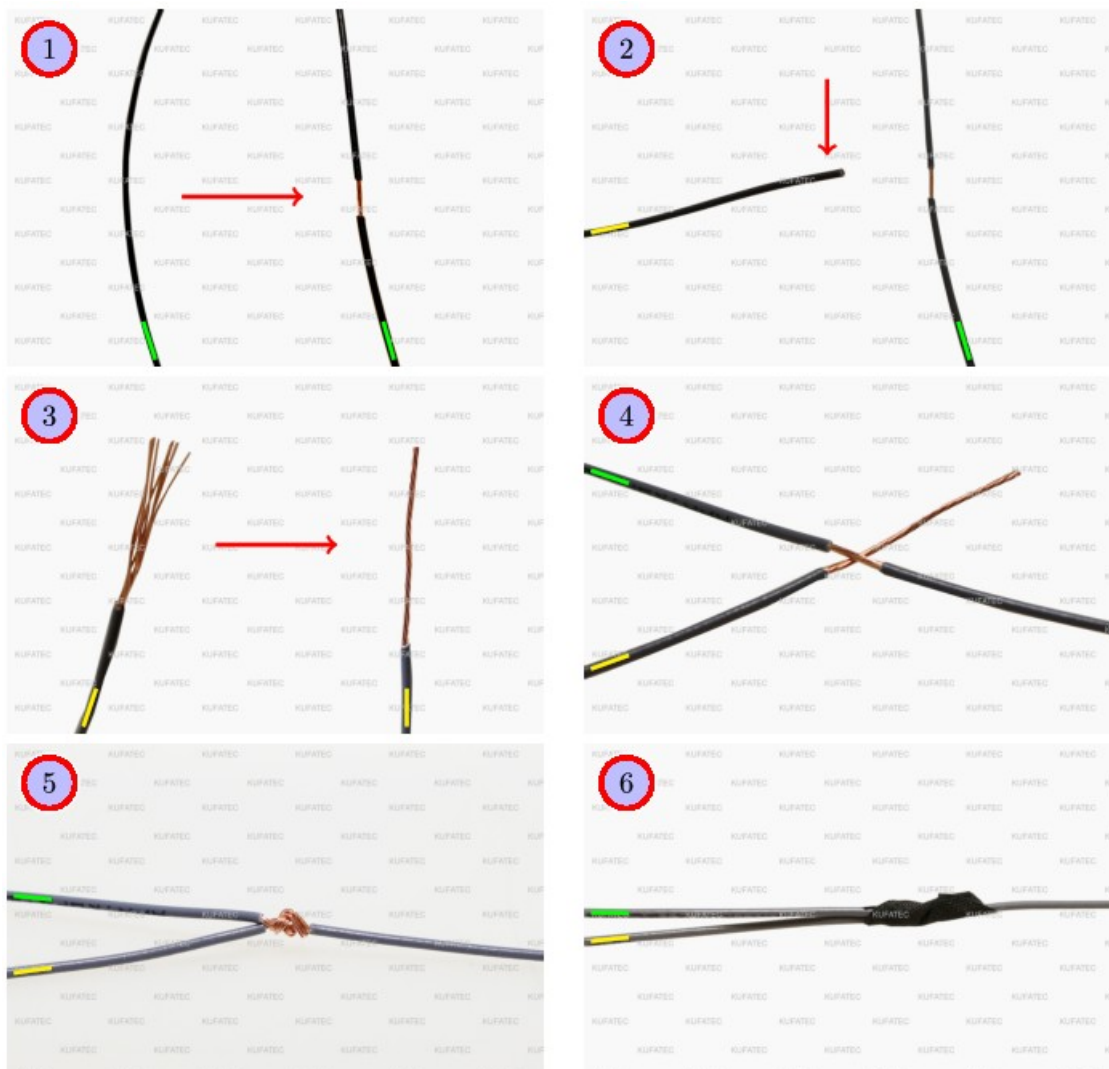


Figure 1: How to connect a cable to another

Table 1: How to connect a cable to another

No.	Work step	Note
1	Take the cable of the vehicle, to which you want to connect, (green marked here) and strip the insulation at one point with a suitable tool (cable stripper/cutter knife).	
2	Now take the cable of the cable set, which you want to connect, (yellow marked here) and strip the insulation at the end.	
3	Twirl the wires of the stripped cable together.	
4	Place the end of the cable you want to connect under the stripped point of the cable of the vehicle...	
5	... and wrap the cable you want to connect, around the cable of the vehicle.	
6	Lastly, stick insulating tape around the connection point. Make sure that the isolation is put onto the connection professionally to prevent corrosion.	

### Note Cable Inscription/Color



Figure 2: Cable Inscription

**If the cable set consists of colored cables, connect the cables according to the color. If all cables of the cable set have the same color, connect the cables according to the cable inscription.**

### Assembly Instructions

The following illustration shows the cable routing as well as the position of the individual components.

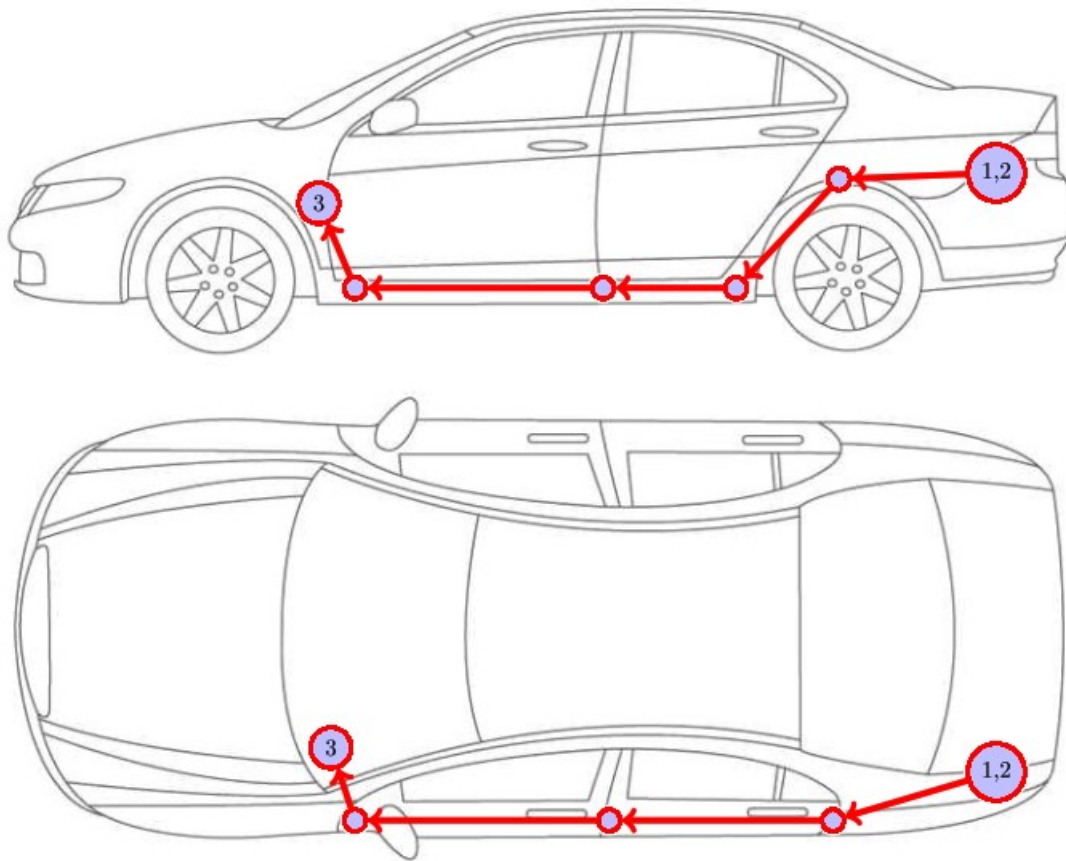


Figure 3: Vehicle overview

- 1 Control unit for sound generator
- 2 Connection cable set
- 3 Button (optional)

Please be aware, that this overview is only for illustration purposes. Always lay the cable set in the most convenient and shortest way possible. For a detailed description of the cable routing, please refer to the relevant sections of the following manual.

## Assembly Note

### Important note for the assembly

- The vehicle used for the assembly instruction was a S5 F5. We would like to point out, that the disassembly of the individual parts can vary depending on the type of vehicle. Please make sure to keep that in mind.

### Note for assembling the vehicle

- Before you start assembling the vehicle, the system must first be tested for proper function.

## Connection Active Sound



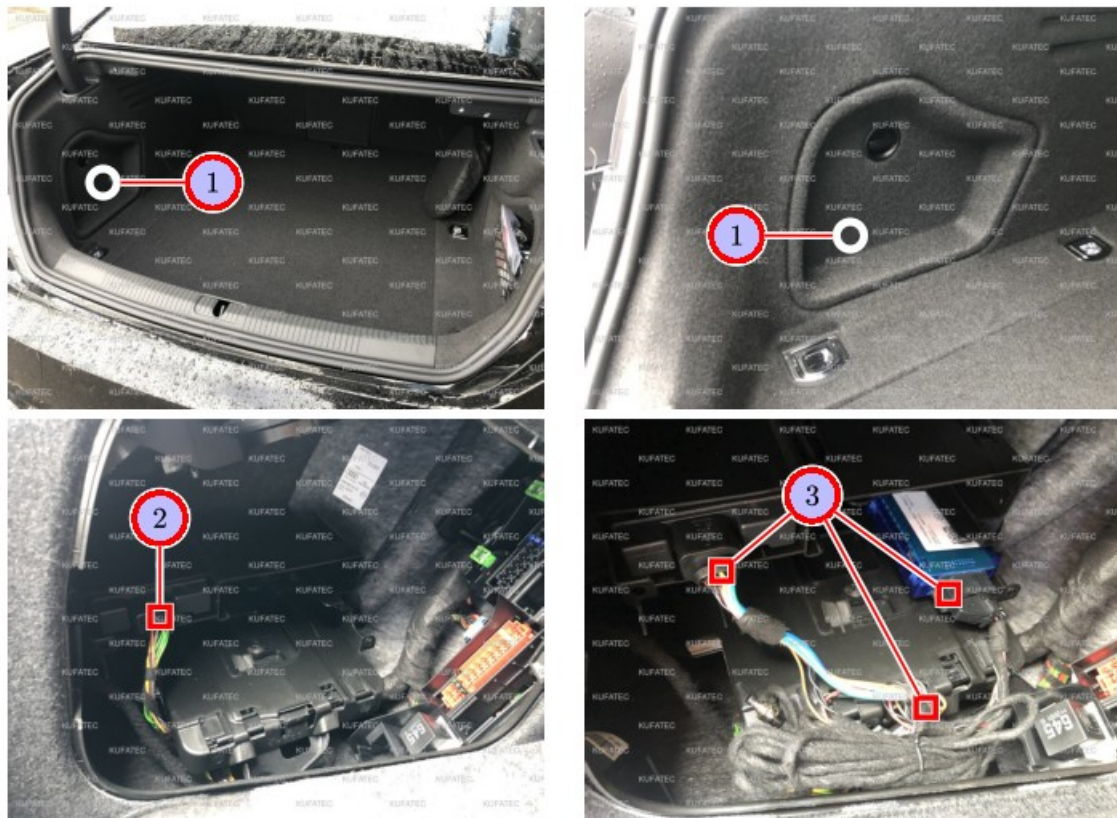


Figure 4: Connection Active Sound

Table 2: Instructions to connect the active sound

No.	Work step	Note
1	Remove the maintenance flap. It is located in the trunk on the driver's side.	
2	Loosen the plug connection of the manufacturer's side assembled sound generator. They are located at the marked spot, directly at the fuse holder (driver's side).	
3	Put our cable set in between. In order to do this, both 8-pole plugs are attached to the manufacturer's side plug. The 18-pole plug is connected to the blue module. Attach the module professionally using factory materials.	
!!	Important note: The set is controlled via app with the smartphone. Optionally, the sound can be activated and deactivated with the button. The button is not necessarily needed. If it is not needed, the section Routing button cable as well as Disassembly front sill trim can be skipped.	

## Disassembly front sill trim

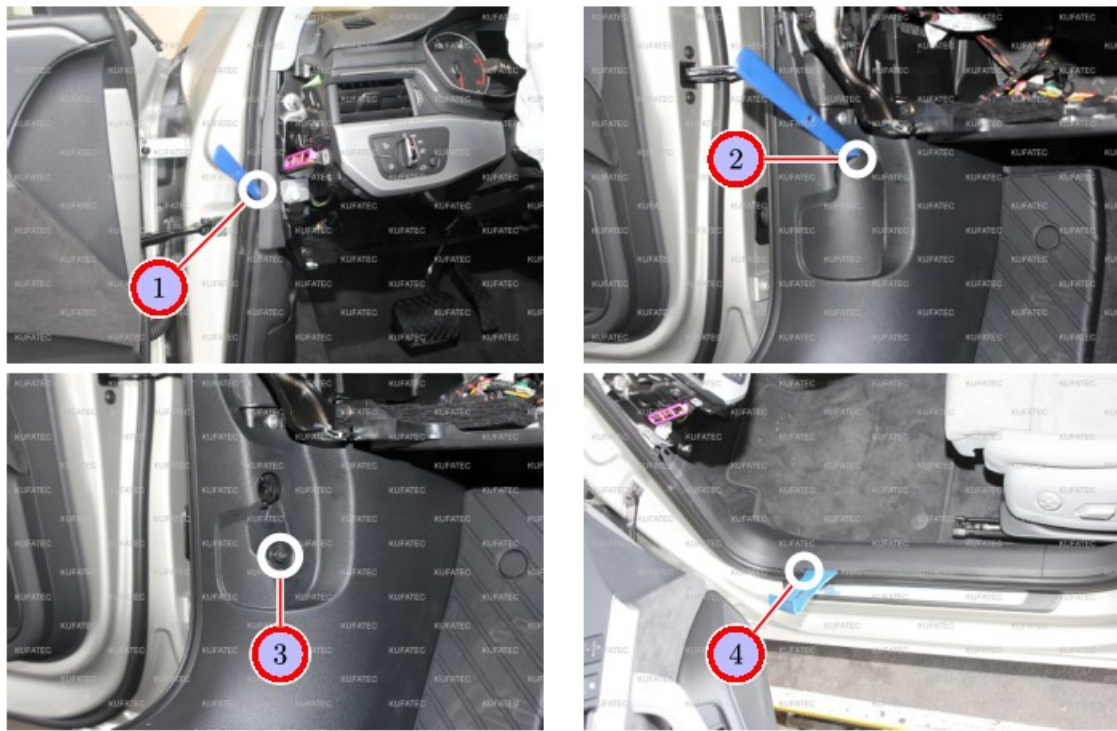


Figure 5: Disassembly front sill trim

Table 3: Instructions to disassemble the front sill trim

Nº	Work step	Note
1	Remove the upper cover of the a-column by using an assembly lever.	
2	Loosen the lever for the hood release by pushing in the back of the latching nose. The lever can now be lowered down by using the assembly lever.	
3	Loosen the marked screw behind the lever for the hood release.	1xT25
4	Remove the sill trim including the lower cover of the A-column by using an assembly lever.	

## Routing button cable



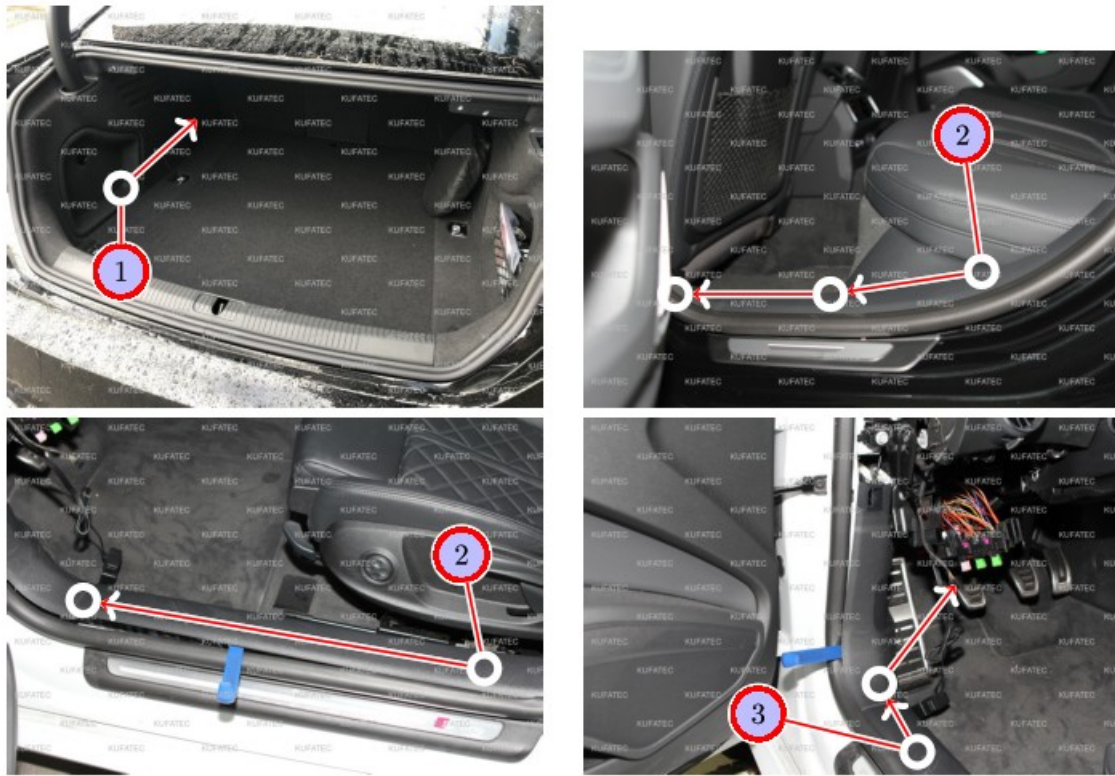


Figure 6: Routing button cable

Table 4: Instructions to route and connect the button cable

No.	Work step	Note
!!	Note: Only execute this step, if the button cable is supposed to be assembled in the driver's footwell.	
1	Route the button behind the side covering to the front to the back seat.	
2	Route the button cable under the previously loosened sill trim to the driver's footwell. S	
3	When in the driver's footwell, route the cable to the desired button position.	

## Important Information Sound Booster

Please use suitable screws that can withstand high loads of impact to attach the sound generator. In order to avoid loosening of the screws due to the vibration, please secure the screws with appropriate factory material e.g threadlock. Please additionally check the stability of the Sound Booster regularly and if necessary retighten the screws. In case of non-compliance we do not assume liability for possible damages.

After a successful installation we recommend to cover the sound generator with a zinc spray. Make sure that you cover the opening of the sound generator so that the zinc spray can't get inside the sound generator.

As additional safety the delivered steel cable and the retaining clips have to be attached to the Sound Booster as well as at a suitable position to the car. This safety cable is an additional security should the tightening screws be released due to the vibration.

## Configuration

### Configuration

If a Bluetooth enabled module is available, the app „Kufatec-Link” is required for the configuration. The app is available to download for free for IOS as well as for Android.

- For IOS in the Apple Store: <https://apps.apple.com/app/kufatec-link/id1401203449>



- For Android in the Google Play Store: <https://play.google.com/store/apps/details?id=com.kufatec.ktcLink>



## Software

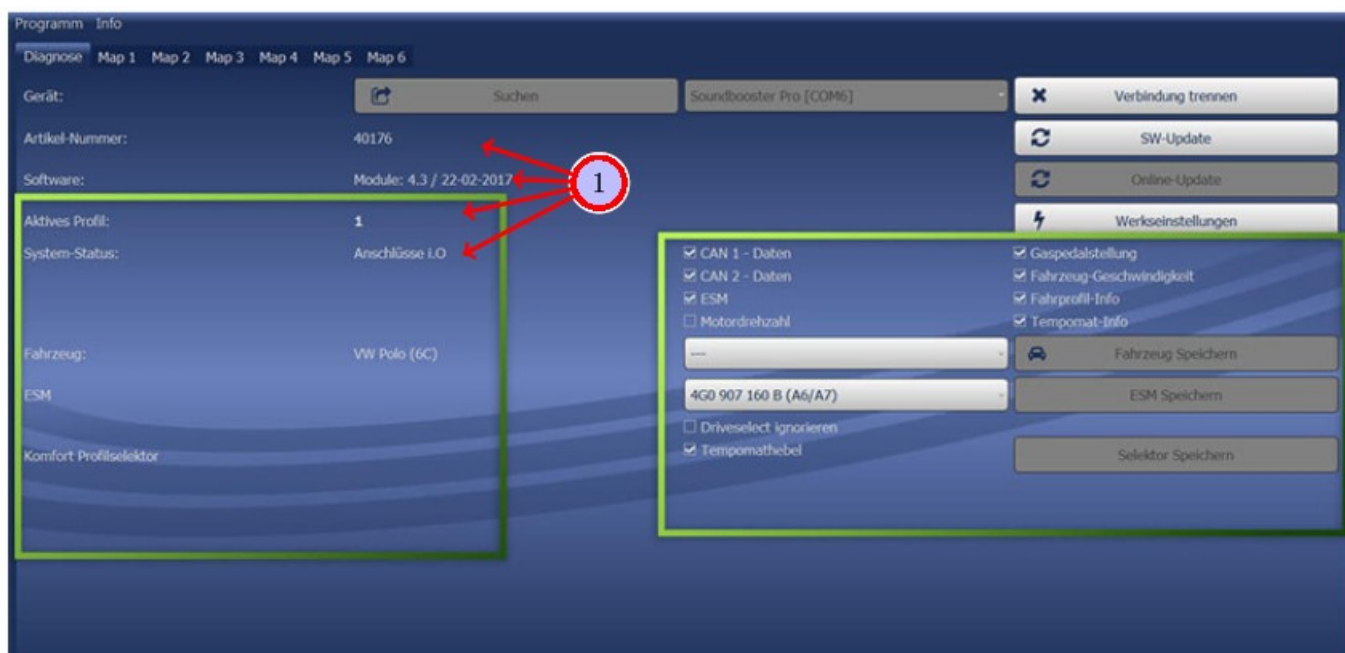


Figure 7: Software

Table 5: Notes for the software



No.	Work step	Note
1	If no current vehicle is identified, you have to select the vehicle via the manual selection as follows:	
2	Open the dropdown-menu, search for your vehicle and select it.	
3	Click on Save Car to permanently save the iverhicle to the module.	
	If you don't find your vehicle in the list, it might be necessary that the software has to be adapted to your vehicle. In that case, please contact us via e-mail: info@Thkufatec.de or by phone: +49 (0) 4551 / 80 810 888. We will make an appointment with you, where we will adapt the software to your vehicle per Team Viewer (remote maintenance).	

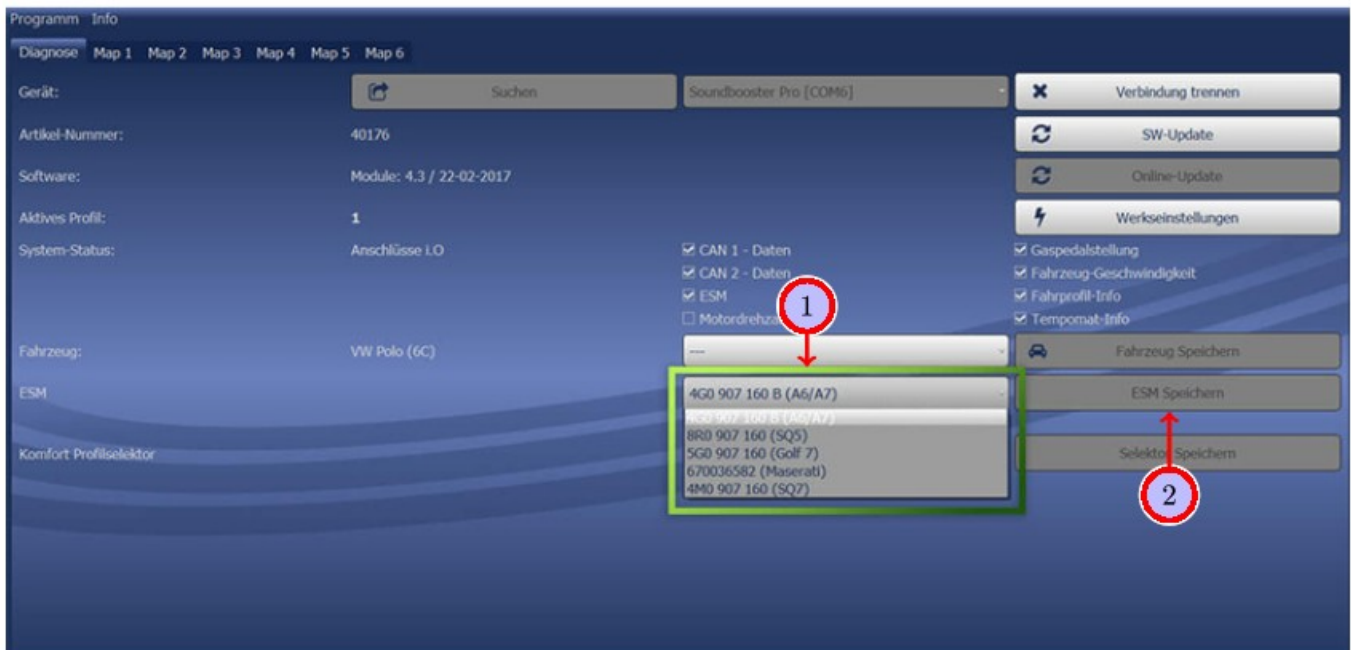


Figure 9: Software

Table 7: Notes for the software

No.	Work step	Note
1	You also need to check if the right ESM is selected in our software:	
	Open the dropdown-menu, search for the correct ESM and select it.	
2	Click on Save ESM to permanently save the ESM to the module.	
3	For example, if you ordered a complete set with a Audi control unit you need to select the ESM 4G0 907 160 B (A6/A7). If you installed the Maserati control unit instead of the Audi control unit you need to select the ESM 670036582 (Maserati).	
	If the system does not work after all please get in contact with us via e-mail: info@kufatec.de or by phone: +49 (0) 4551 / 80 810 888. We will check the issue as soon as possible.	

## List of Figures

1 How to connect a cable to another	6
2 Cable Inscription	7
3 Vehicle overview	8


4 Connection Active Sound . . . . . 10  
5 Disassembly front sill trim . . . . . 11  
6 Routing button cable . . . . . 12  
7 Software . . . . . 14  
8 Software . . . . . 15  
9 Software . . . . . 16

List of Tables

1 How to connect a cable to another . . . . . 6  
2 Instructions to connect the active sound . . . . . 10  
3 Instructions to disassemble the front sill trim . . . . . 11  
4 Instructions to route and connect the button cable . . . . . 12  
5 Notes for the software . . . . . 14  
6 Notes for the software . . . . . 15  
7 Notes for the software . . . . . 16

Kufatec GmbH & Co. KG – Dahlienstr. 15 – 23795 Bad Segeberg – e-mail: [info@kufatec.de](mailto:info@kufatec.de)

Documents / Resources

	<p><a href="#">KUFATEC Complete Set Active Sound</a> [pdf] Instruction Manual Complete Set Active Sound, Set Active Sound, Complete Active Sound, Active Sound, Sound</p>
--	---

References

- [K Contact form | Support, phone | KUFATEC Deutschland](#)