



KRUX ARM 400 Adjustable Arm With A C Clamp Mount Instruction Manual

[Home](#) » [KRUX](#) » KRUX ARM 400 Adjustable Arm With A C Clamp Mount Instruction Manual 

Contents

- [1 KRUX ARM 400 Adjustable Arm With A C Clamp Mount](#)
- [2 Product Information](#)
- [3 Product Usage Instructions](#)
- [4 Frequently Asked Questions \(FAQ\)](#)
- [5 SAFETY INSTRUCTION](#)
- [6 TECHNICAL SPECIFICATION](#)
- [7 ARM](#)
- [8 THREADS](#)
- [9 MOUNTING](#)
- [10 CABLE MANAGEMENT](#)
- [11 Use and warranty limitations](#)
- [12 Documents / Resources](#)
 - [12.1 References](#)



KRUX ARM 400 Adjustable Arm With A C Clamp Mount



Product Information

Technical Specifications

- **Adjustable Arm:** KRXH006 ARM 400
- **Horizontal Reach:** MAX 740 mm
- **Vertical Reach:** MAX 705 mm
- **Thread Size:** 3/8 ; 3/8 – 5/8 ; 3/8 – 1/4
- **Desktop Thickness:** MAX 55 mm
- **Base Width:** MAXIMUM WEIGHT SUPPORTED / OBCIENIE MAKSYMALNE: 70 mm MAX 1800 g

Product Usage Instructions

Mounting Instructions

Follow the steps below to mount the ARM:

1. **Step A/B:** Attach parts A and B together.
2. **Step C:** Secure part C in place.
3. **Step D:** Connect part D to complete the mounting.

Cable Management

To manage cables effectively, follow these steps:

1. Use cable management clips to secure cables along the ARM.
2. Route cables through designated channels for a clean setup.

Frequently Asked Questions (FAQ)

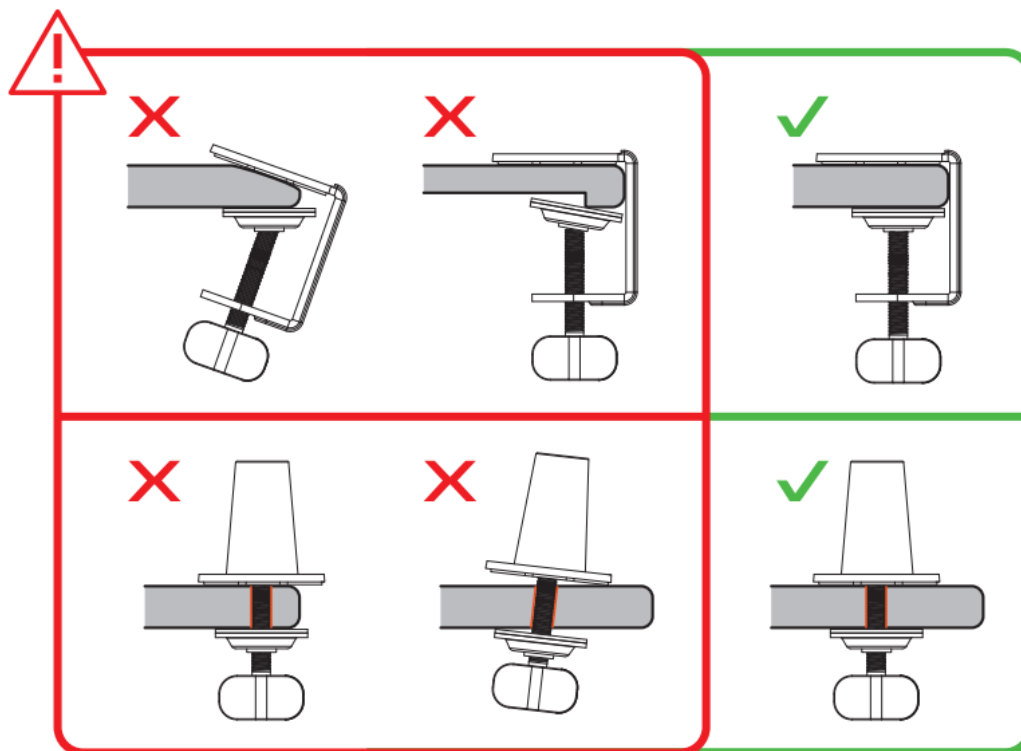
- **What is the maximum weight supported by the ARM?**

The ARM can support a maximum weight of 1800 grams.

- **Can the ARM be adjusted vertically and horizontally?**

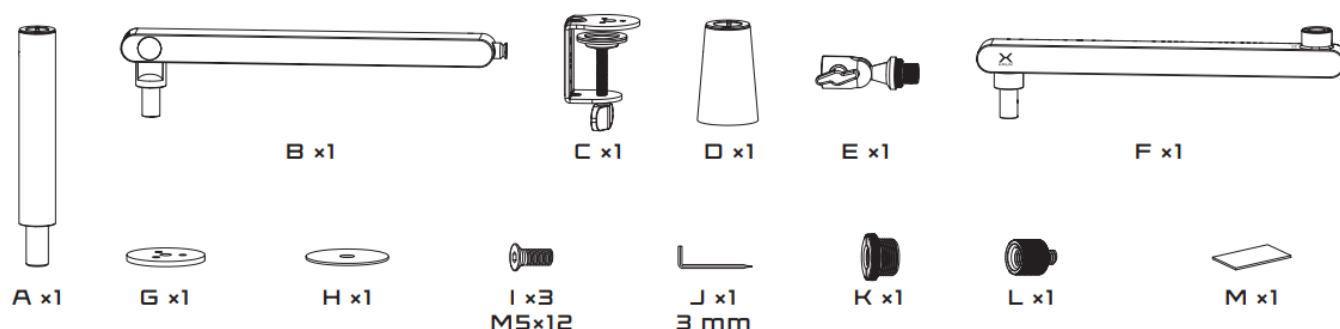
Yes, the ARM has both vertical and horizontal reach adjustments.

SAFET INSTRUCTION

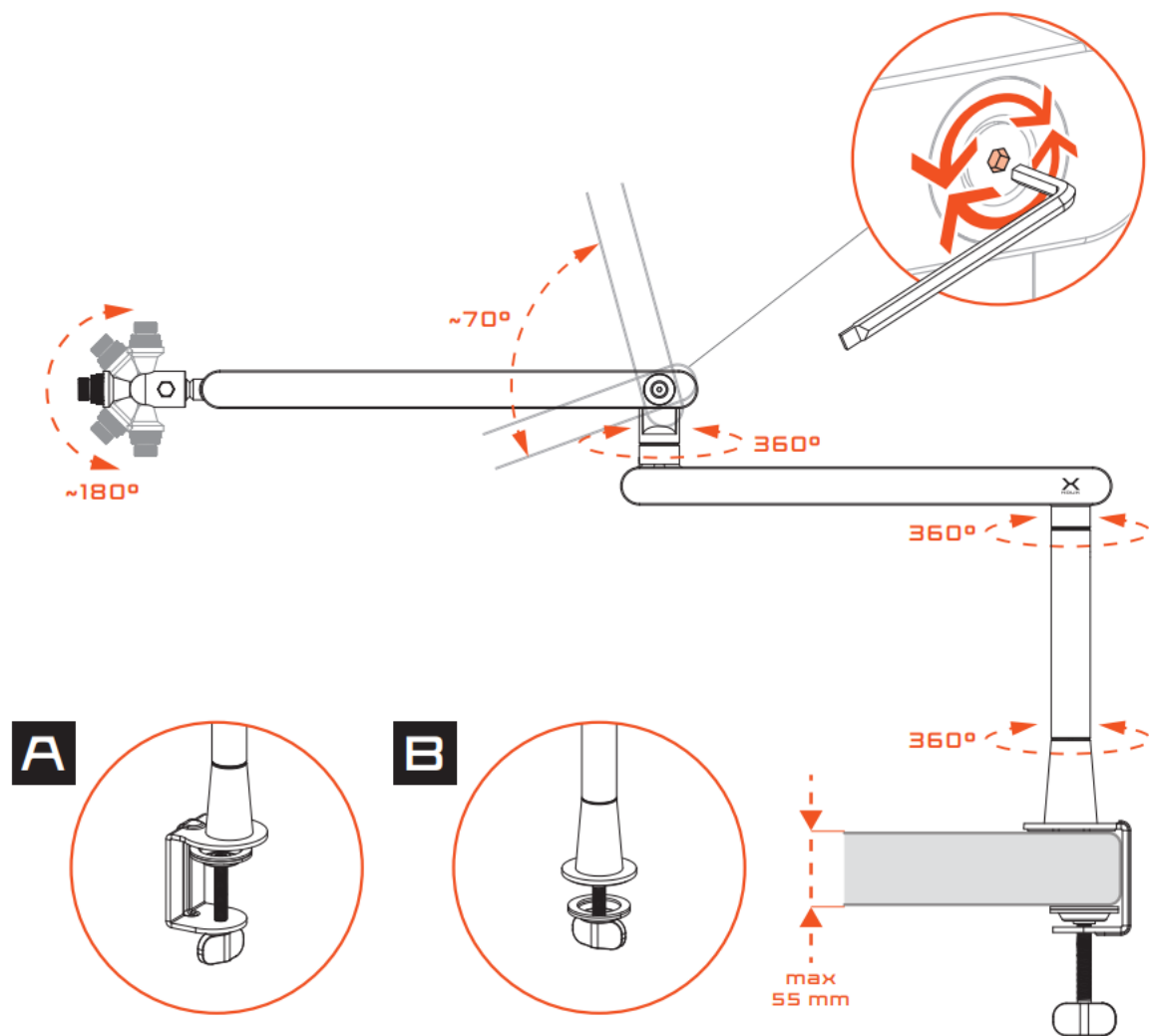


TECHNICAL SPECIFICATION

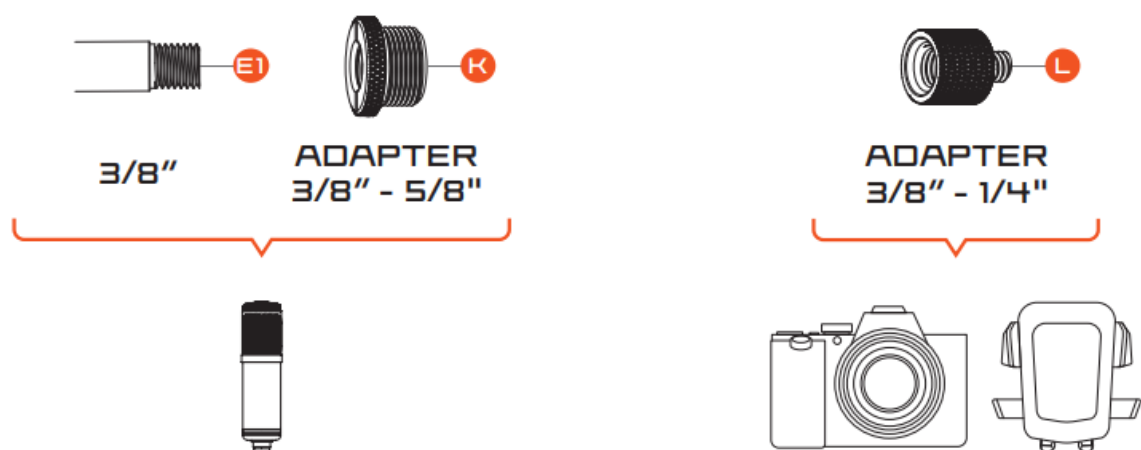
ADJUSTABLE ARM / REGULOWANE RAMIĘ:	KRXH006 ARM 400
HORIZONTAL REACH / ZASIĘG POZIOMY:	MAX 740 mm
VERTICAL REACH / ZASIĘG PIONOWY:	MAX 705 mm
THREAD SIZE / ROZMIAR GWINTU:	3/8" ; 3/8" – 5/8" ; 3/8" – 1/4"
DESKTOP THICKNESS / GRUBOŚĆ BLATU:	MAX 55 mm
BASE WIDTH / SZEROKOŚĆ PODSTAWY:	70 mm
MAXIMUM WEIGHT SUPPORTED / OBCIĄŻENIE MAKSYMALNE:	MAX 1800 g



ARM

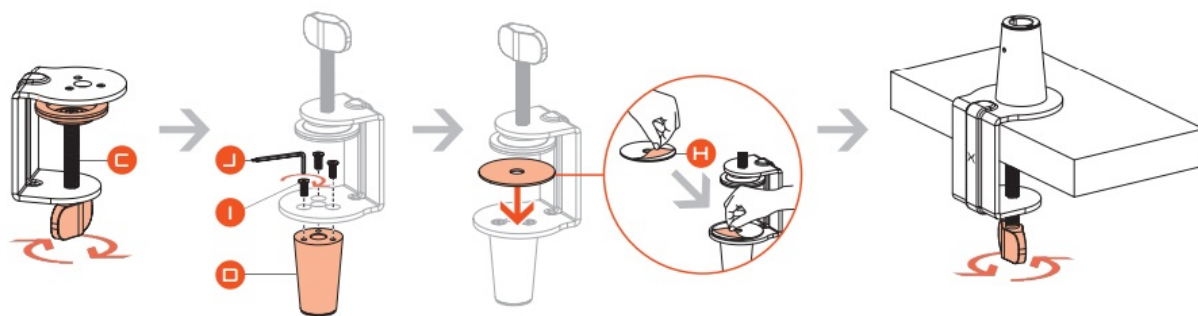


THREADS

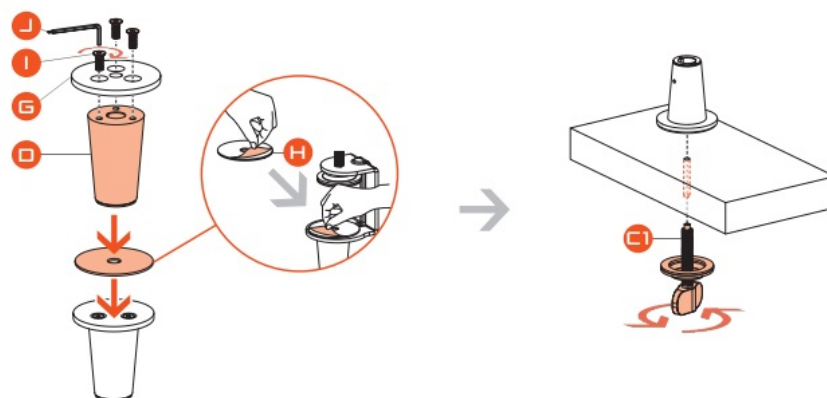
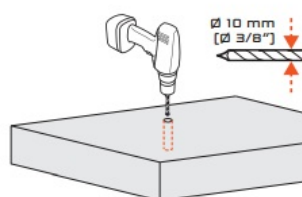
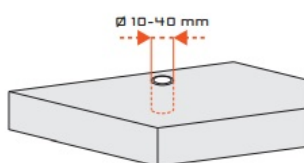
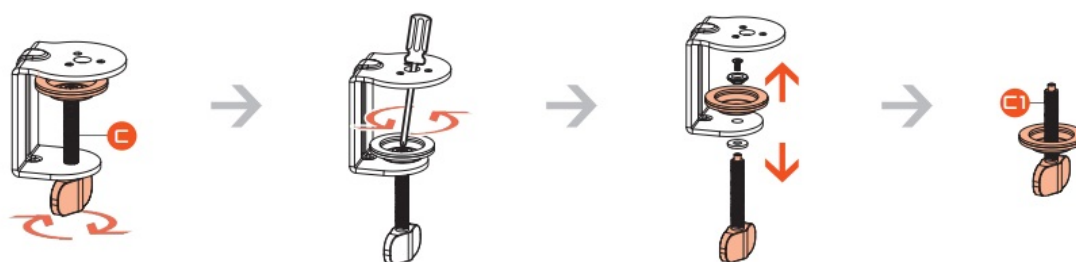


MOUNTING

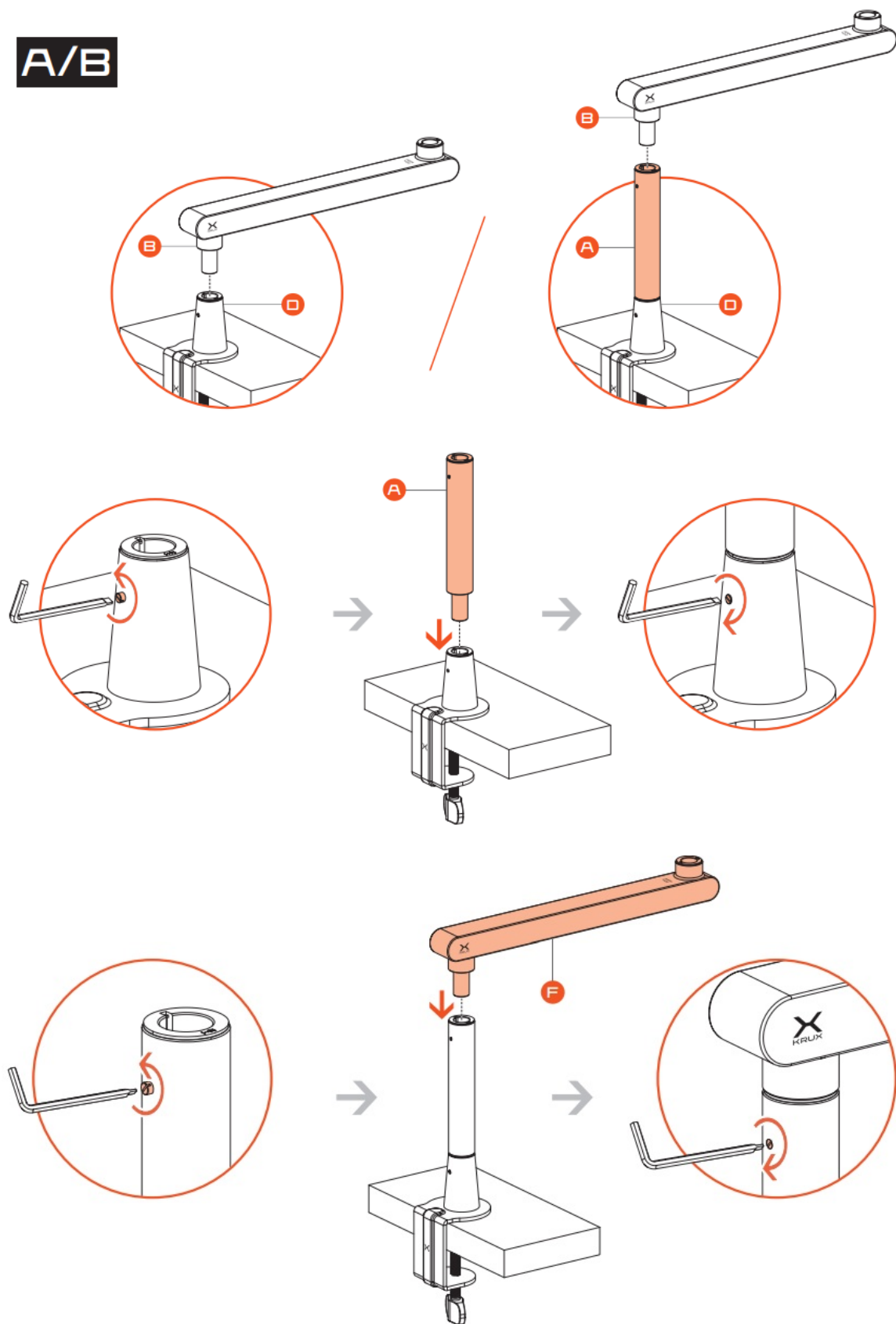
A → A/B

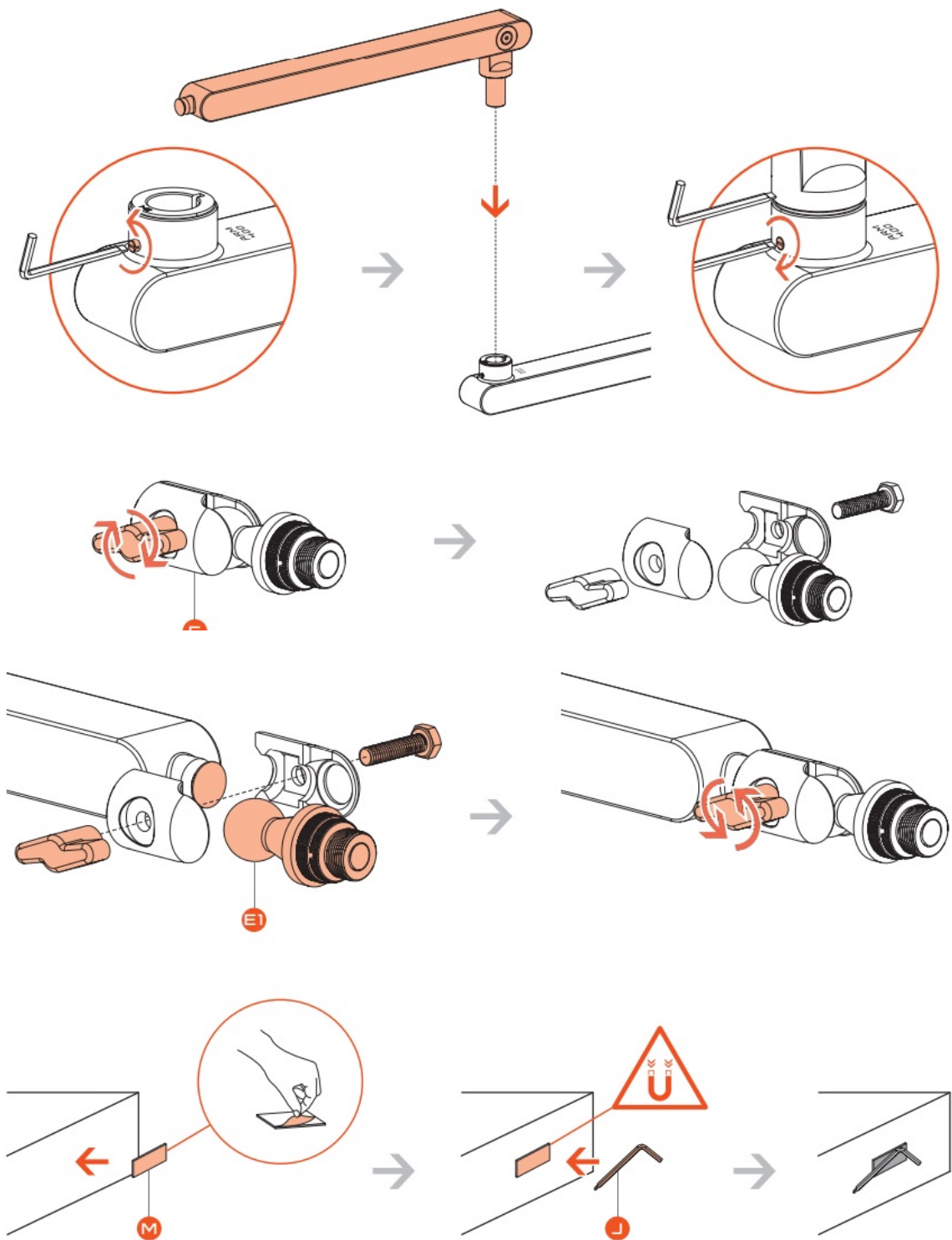


B → A/B

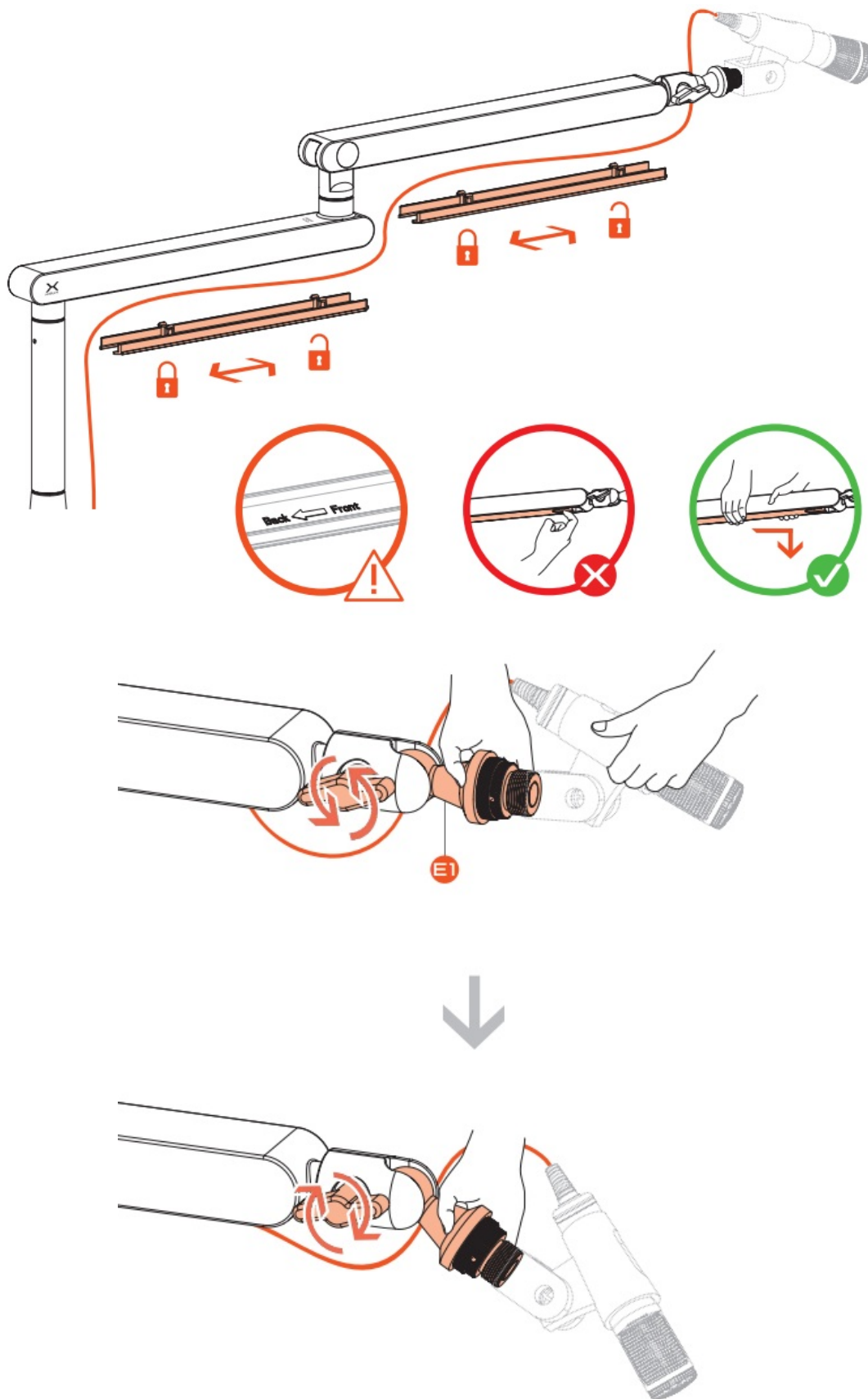


A/B





CABLE MANAGEMENT




Use and warranty limitations

- Not suitable for children under 5 years. The set has small parts that may be swallowed.
- The maximum load refers to the optimal configuration. It may vary depending on the configuration.
- The product should be used according to its intended purpose. Incorrect use can damage the product and endanger the life of the user;
- Excessive humidity, dust and other contaminations can result in product damage which is not covered by the

warranty;

- The warranty does not cover mechanical damage to the product;
 - Avoid exposure to rapid changes in ambient temperature. Should they occur, wait approx. 30 minutes before using the product until the temperature is leveled;
 - You can find the Warranty Terms and Conditions in "Support" at <https://krux.tech/>
 - 2-year manufacturer warranty
-

Documents / Resources

	<p>KRUX ARM 400 Adjustable Arm With A C Clamp Mount [pdf] Instruction Manual ARM 400 Adjustable Arm With A C Clamp Mount, ARM 400, Adjustable Arm With A C Clamp Mount, Arm With A C Clamp Mount, A C Clamp Mount, Clamp Mount, Mount</p>
---	---

References

-  [Krux | Marka dla graczy](#)
- [User Manual](#)

Manuals+, Privacy Policy

This website is an independent publication and is neither affiliated with nor endorsed by any of the trademark owners. The "Bluetooth®" word mark and logos are registered trademarks owned by Bluetooth SIG, Inc. The "Wi-Fi®" word mark and logos are registered trademarks owned by the Wi-Fi Alliance. Any use of these marks on this website does not imply any affiliation with or endorsement.