

Contents [[hide](#)]

- [1 KRUSNATE Ceiling Light With 2 Spots](#)
- [2 Product Information](#)
- [3 Product Usage Instructions](#)
- [4 NEEDED TOOLS](#)
- [5 INSTALLATION INSTRUCTIONS](#)
- [6 FAQ](#)
- [7 Documents / Resources](#)
 - [7.1 References](#)

KRUSNATE

KRUSNATE Ceiling Light With 2 Spots



Product Information

Specifications

- **Product Name:** KRUSNATE
- **Usage:** Indoor use only

- **Bulb Type:** GU10 LED bulb

Product Usage Instructions

Installation Instructions

CAUTION: Before starting, turn off the power at the main circuit panel.

Electrical Connections

1. Identify the Live, Neutral (with Earth/tracer), and Ground wires.
2. Connect the wires according to the provided diagram.

Bulb Replacement

When changing the bulb:

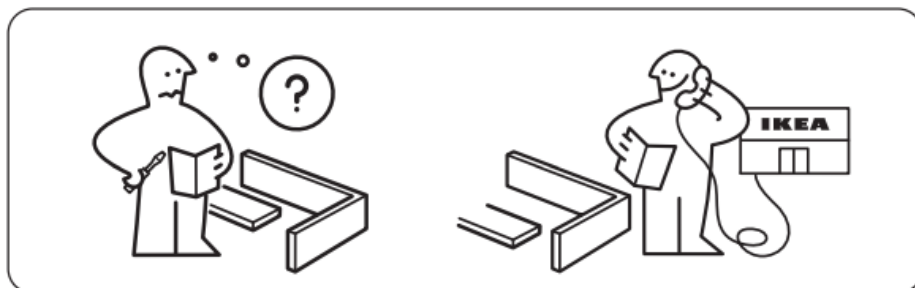
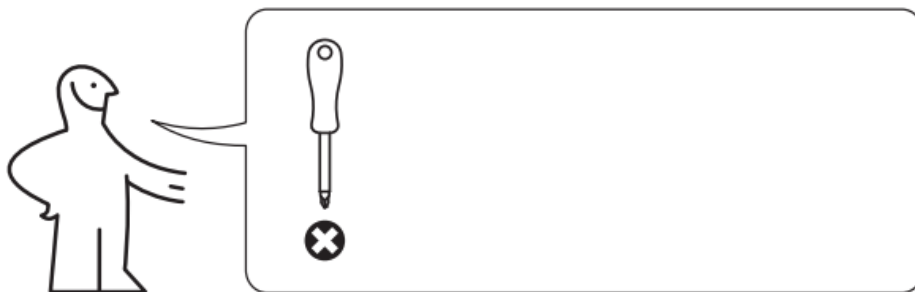
- Use only a GU10 LED bulb.
- Do not use GU10 Halogen bulbs.

For indoor use only

CAUTION:

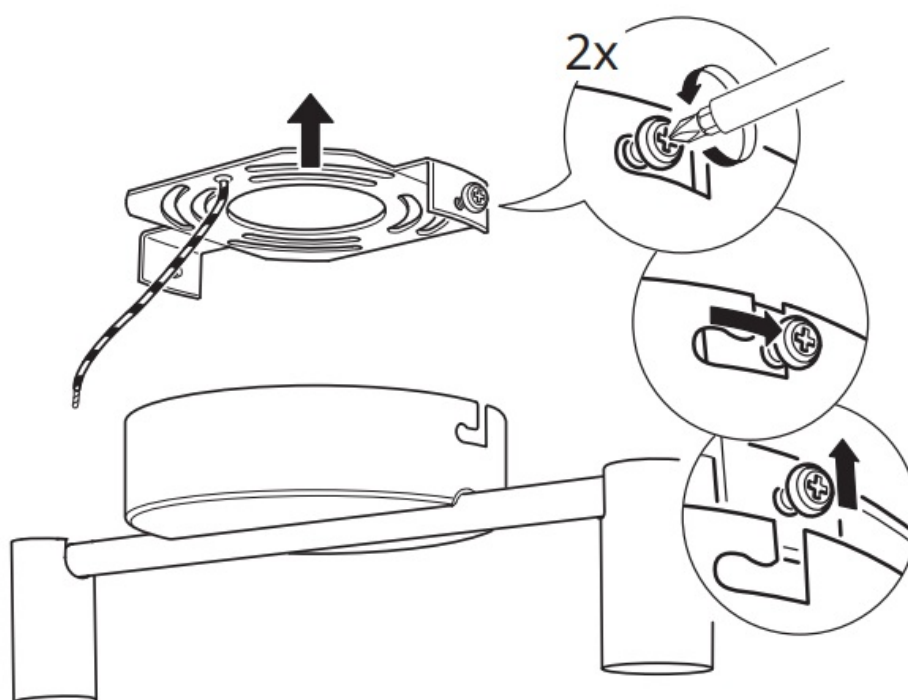
Before starting, turn off the power at the main circuit panel.

NEEDED TOOLS

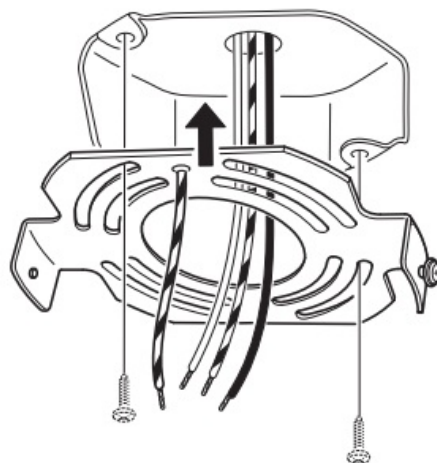


INSTALLATION INSTRUCTIONS

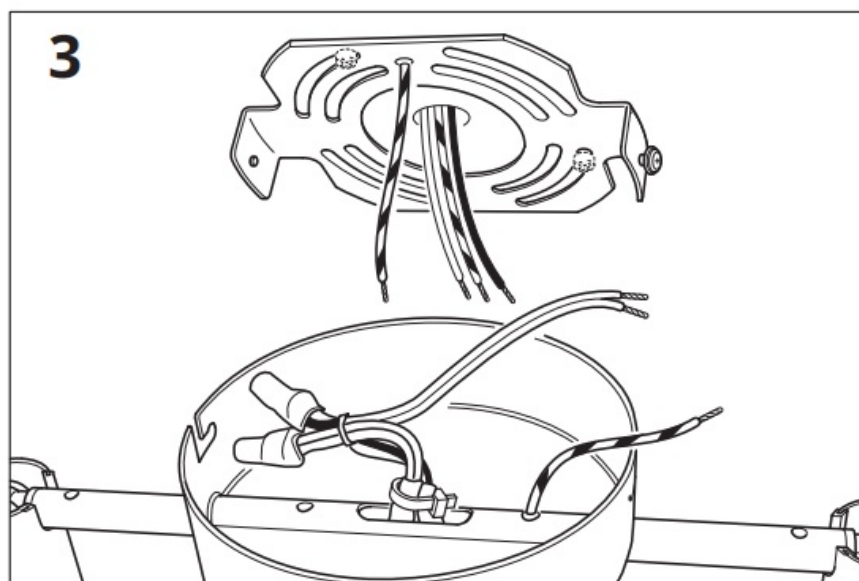
1



2



3



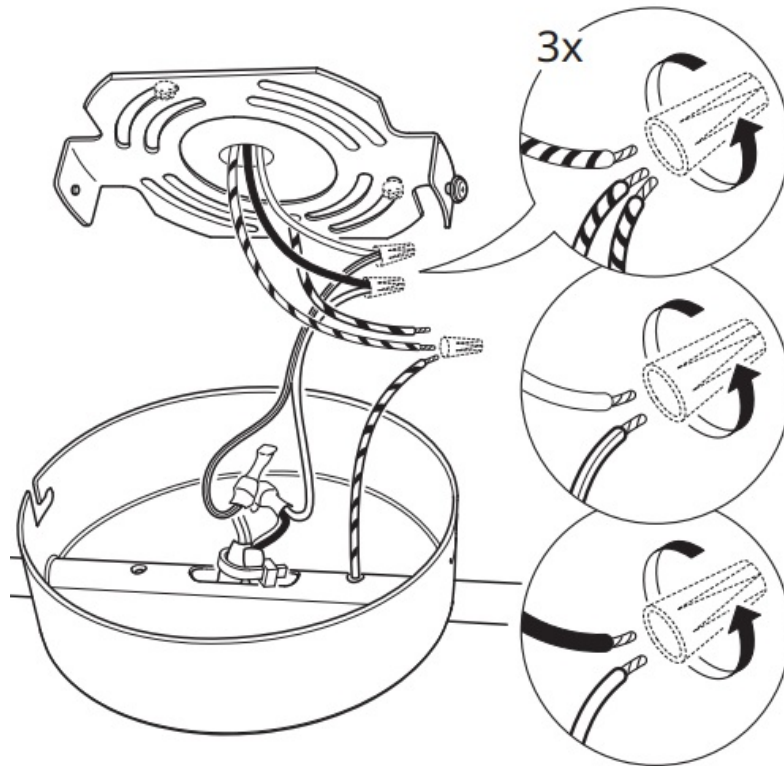
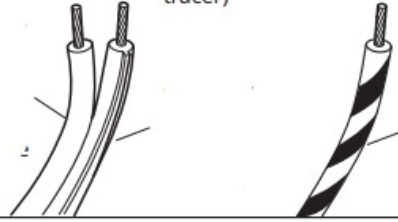
4



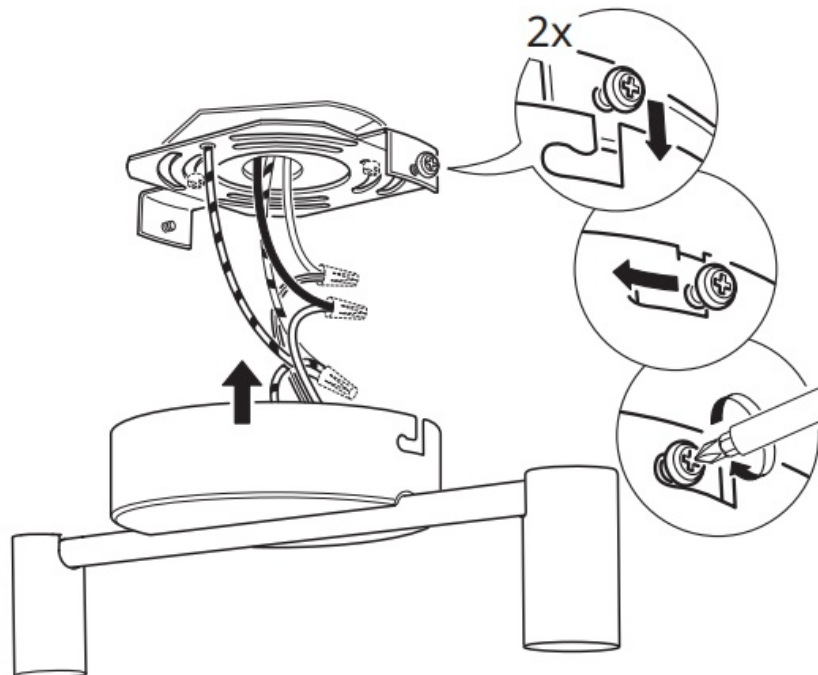
English
Live

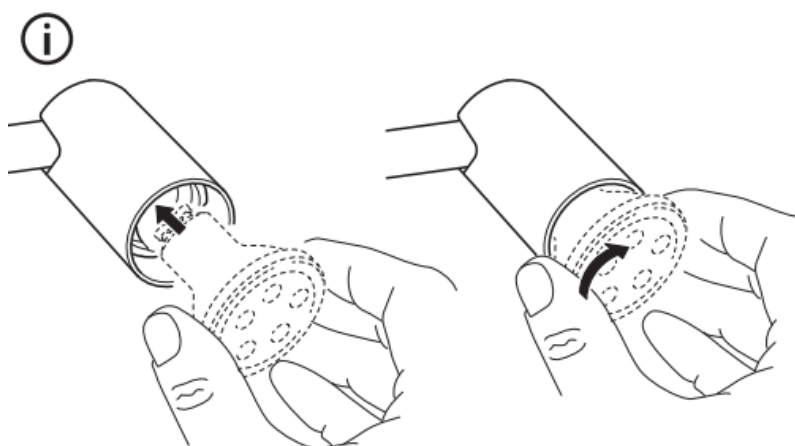
English
Neutral (with
tracer)

English
Earth/
Ground



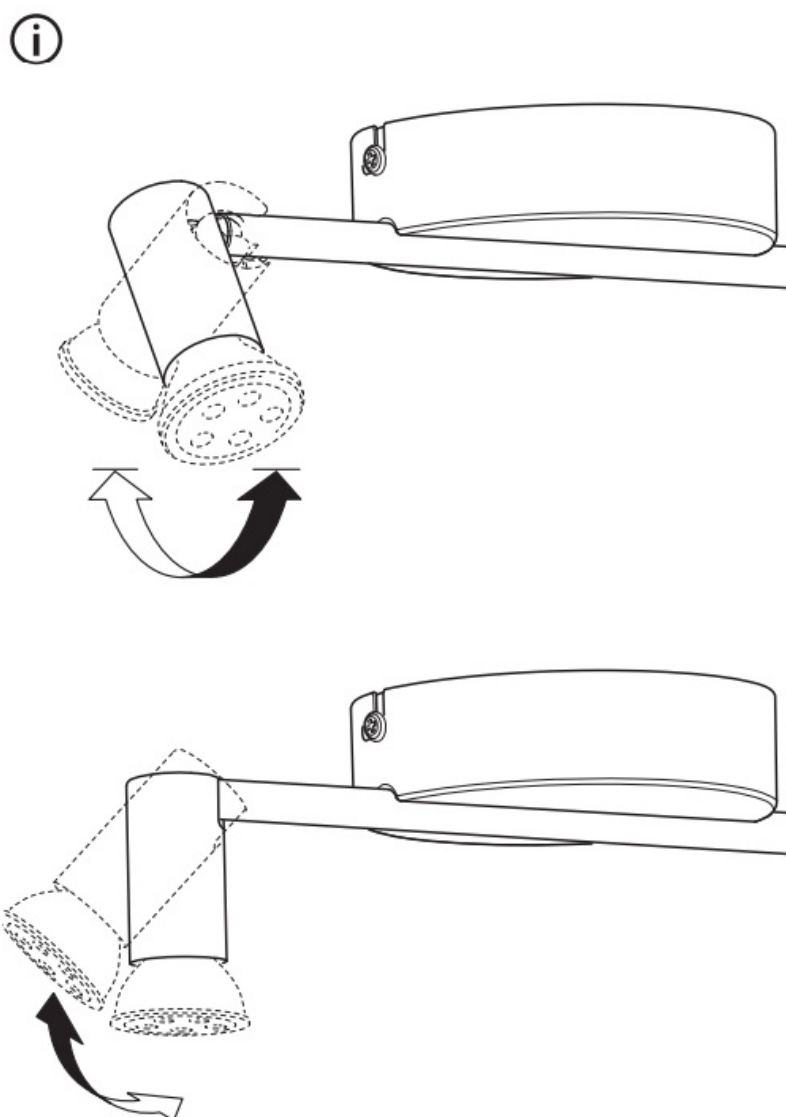
5





WHEN CHANGING BULB – use only a GU10 LED bulb.

Do not use GU10 Halogen.

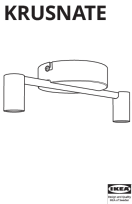


© Inter IKEA Systems B.V. 2022 2025-02-25 AA-2378723-4

FAQ

- **Q: Can I use a GU10 Halogen bulb with this product?**
 - **A:** No, only GU10 LED bulbs should be used with this product.

Documents / Resources

	KRUSNATE KRUSNATE Ceiling Light With 2 Spots [pdf] User Guide AA-2378723-4, KRUSNATE Ceiling Light With 2 Spots, KRUSNATE, Ceili ng Light With 2 Spots, With 2 Spots, Spots
---	---

References

- [User Manual](#)

■ KRUSNATE
◆ AA-2378723-4, Ceiling Light With 2 Spots, KRUSNATE, KRUSNATE Ceiling Light With 2 Spots, Spots, With 2 Spots

Leave a comment

Your email address will not be published. Required fields are marked *

Comment *

Name

Email

Website

☐ Save my name, email, and website in this browser for the next time I comment.

Post Comment

Search:

e.g. whirlpool wrf535swhz

Search

[Manuals+](#) | [Upload](#) | [Deep Search](#) | [Privacy Policy](#) | [@manuals.plus](#) | [YouTube](#)

This website is an independent publication and is neither affiliated with nor endorsed by any of the trademark owners. The "Bluetooth®" word mark and logos are registered trademarks owned by Bluetooth SIG, Inc. The "Wi-Fi®" word mark and logos are registered trademarks owned by the Wi-Fi Alliance. Any use of these marks on this website does not imply any affiliation with or endorsement.