



[Home](#) » [KRUPS](#) » **KRUPS XP381B Authentic Espresso Machine User Guide** 

Contents [[hide](#)]

- [1 KRUPS XP381B Authentic Espresso Machine](#)
- [2 Product Usage Instructions](#)
- [3 Safety](#)
- [4 OVERVIEW](#)
- [5 FIRST USE](#)
- [6 MAKING ESPRESSO WITH GROUND COFFEE](#)
- [7 MAKING ESPRESSO AFTER USING STEAM](#)
- [8 MAKING HOT WATER](#)
- [9 CLEANING](#)
- [10 Frequently Asked Questions](#)
- [11 Documents / Resources](#)
 - [11.1 References](#)

KRUPS®

KRUPS XP381B Authentic Espresso Machine



Product Usage Instructions

First Use

Follow these steps for the first use of the product:

1. Read the safety instructions.
2. Set up the machine according to the user manual.
3. Power on the machine and go through the initial setup process.

Safety

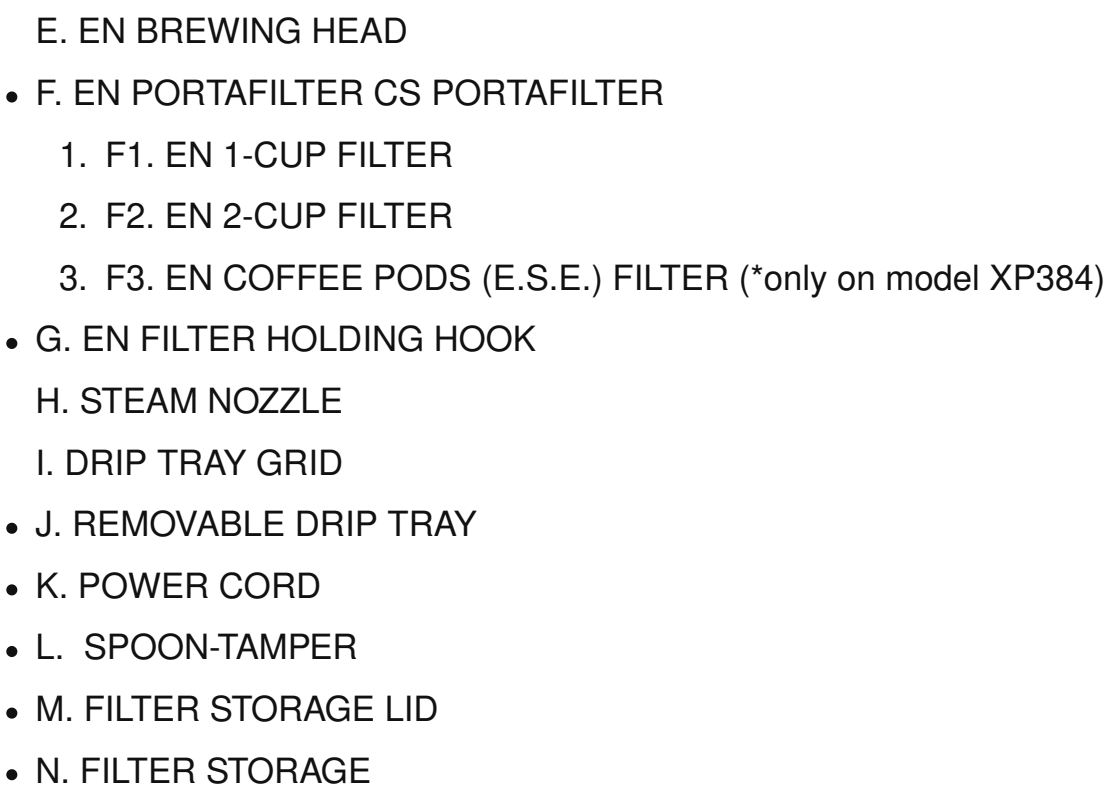
Read the safety instructions booklet before first use. Find the user manual with more detailed instructions by scanning the QR code or visiting www.krups.com



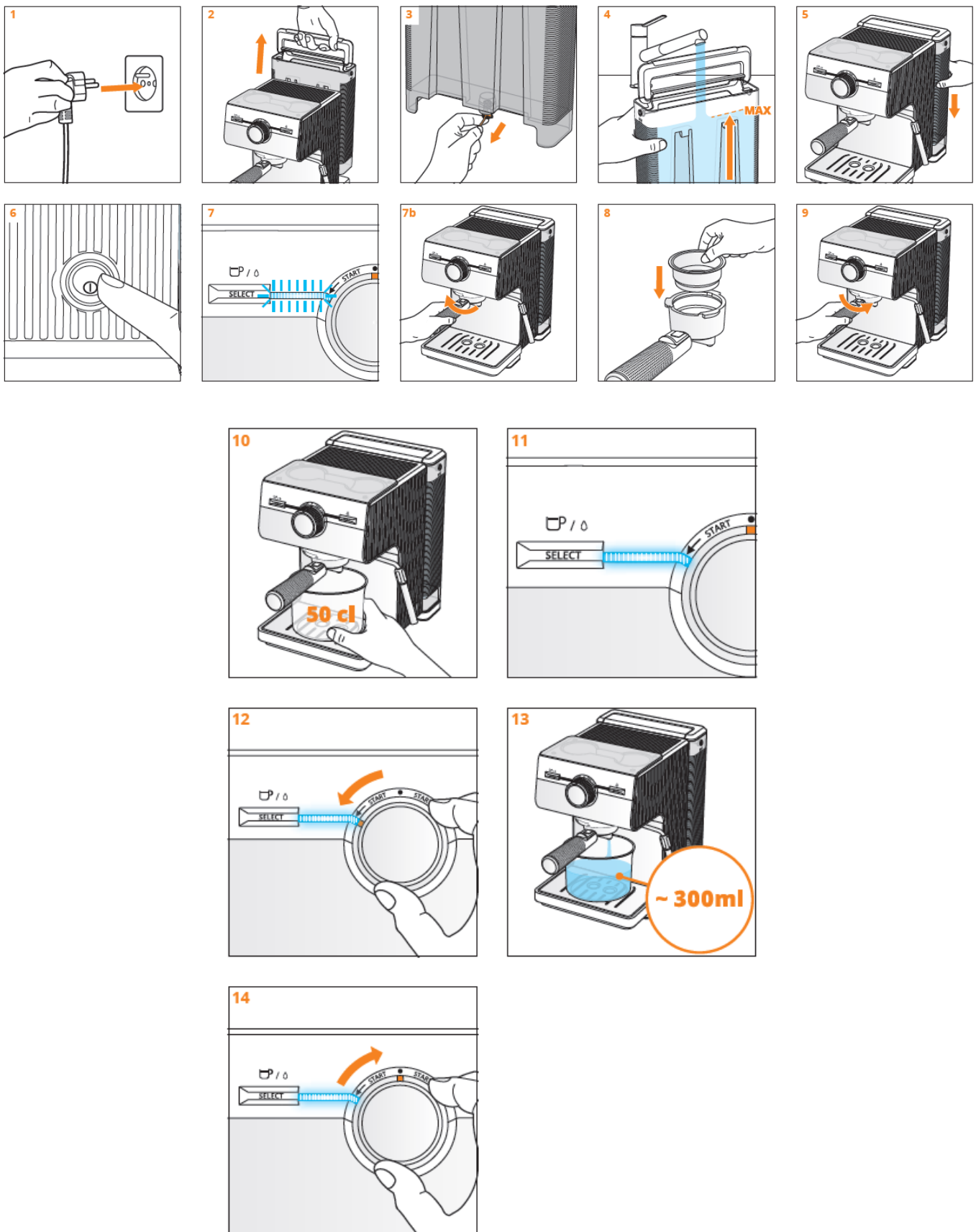
OVERVIEW

- A. EN REMOVABLE 2-L
- B. EN CUP HOLDER TRAY
- C. EN ON/OFF BUTTON
- D. EN CONTROL PANEL

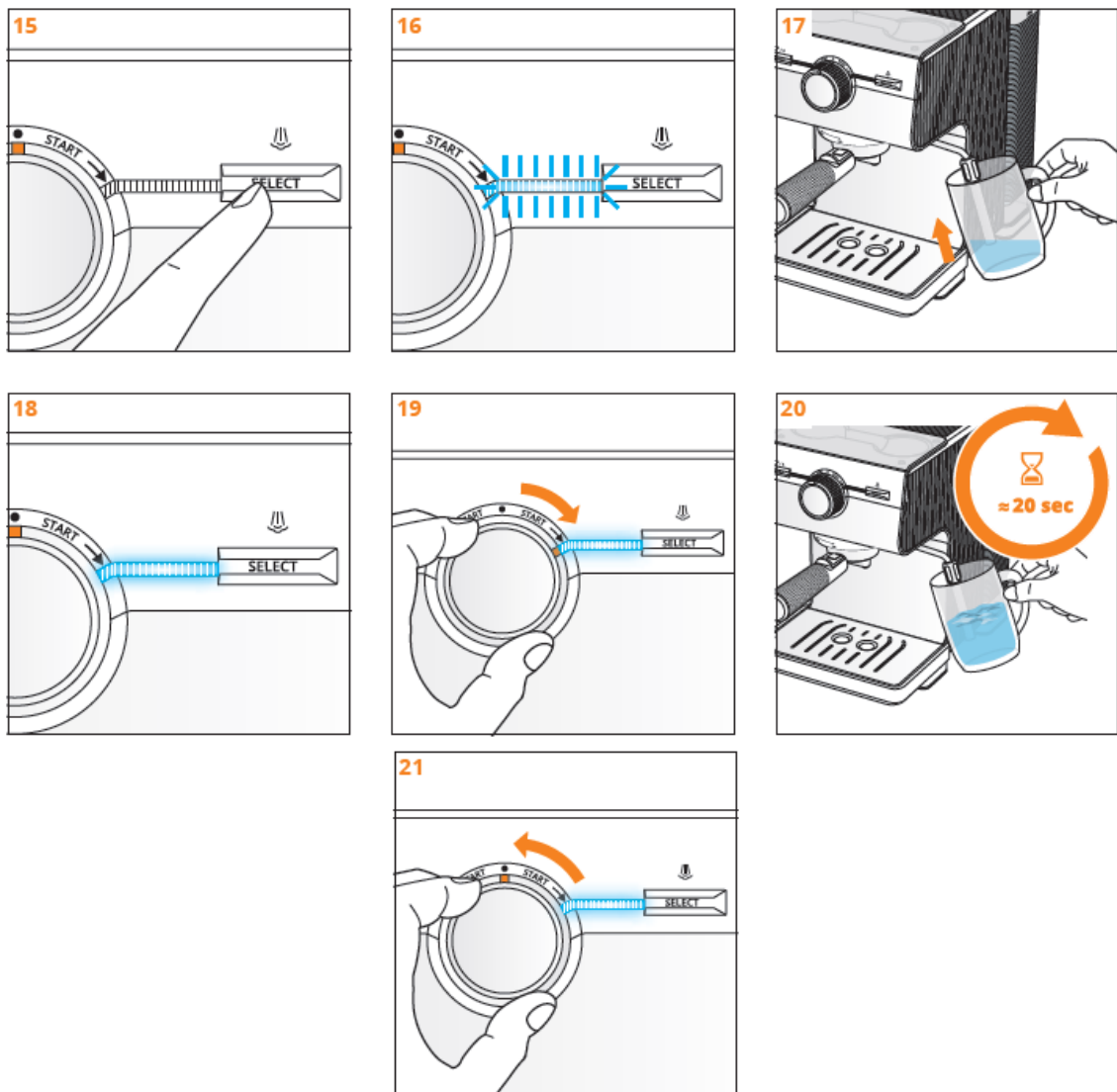
●



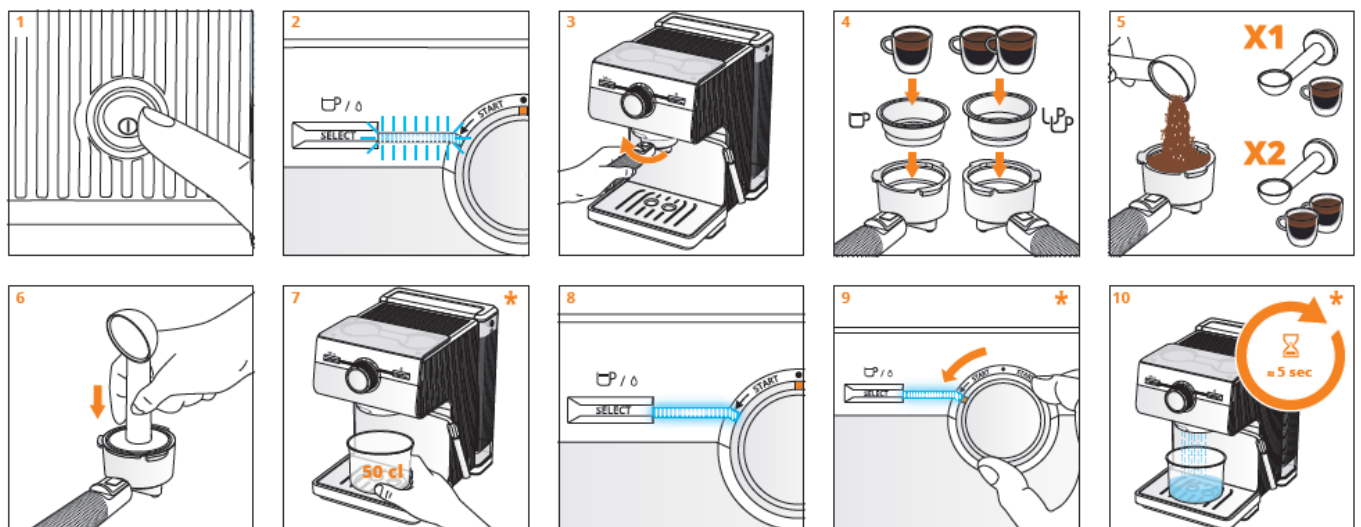
RINSING THE ESPRESSO SYSTEM



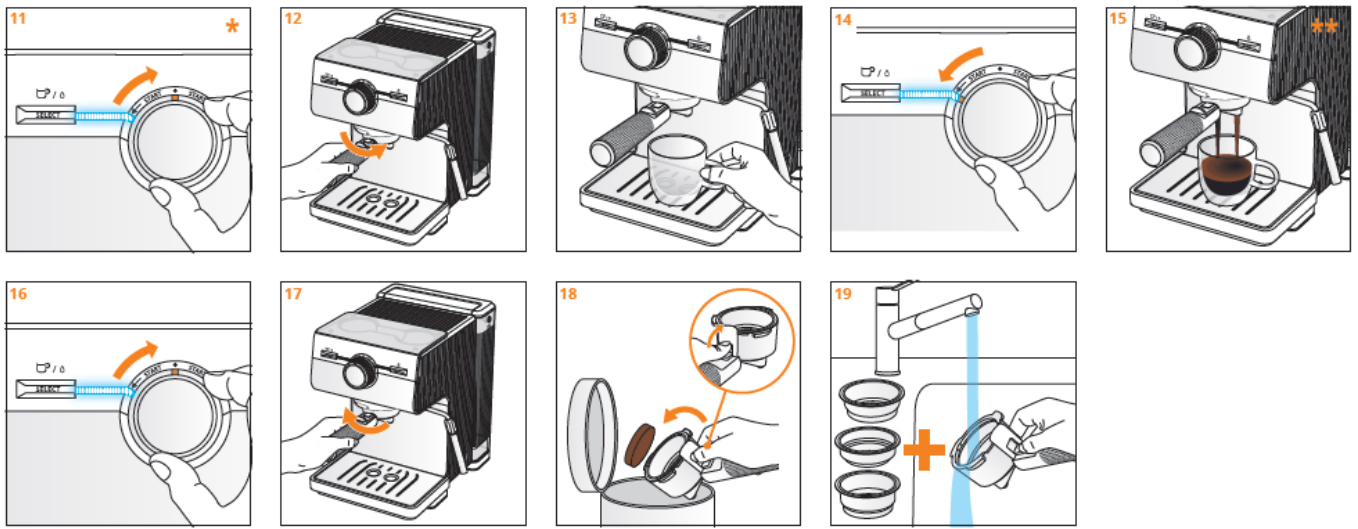
RINSING THE STEAM SYSTEM



MAKING ESPRESSO WITH GROUND COFFEE



TIP TO HEAT YOUR BREWING HEAD. CAN BE SKIPPED

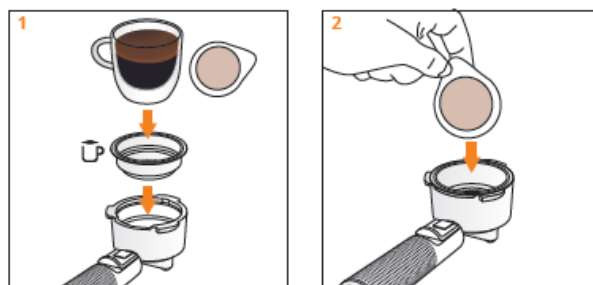


IMPORTANT

THE COFFEE FLOW IS STOPPED MANUALLY. DO NOT MOVE AWAY FROM THE MACHINE WHEN IT IS IN USE

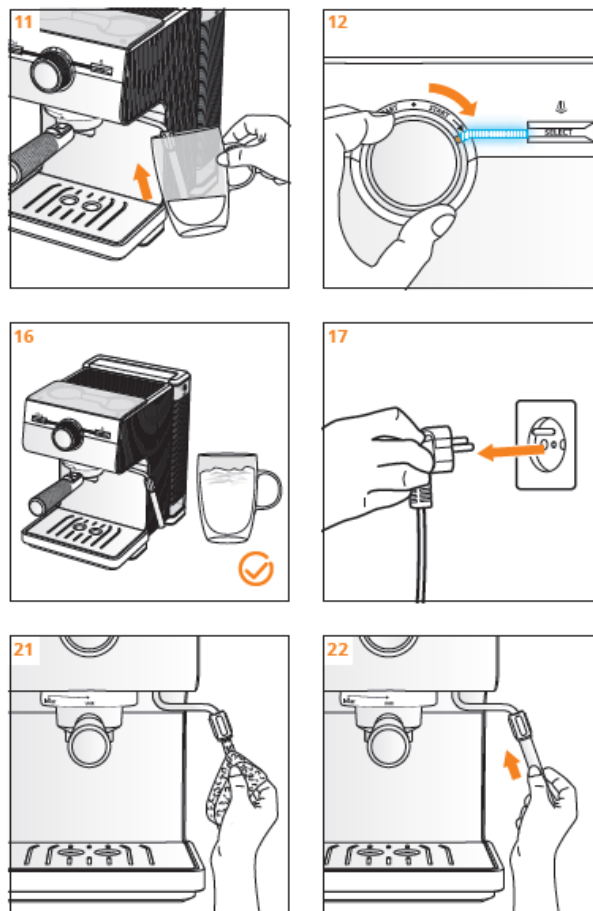
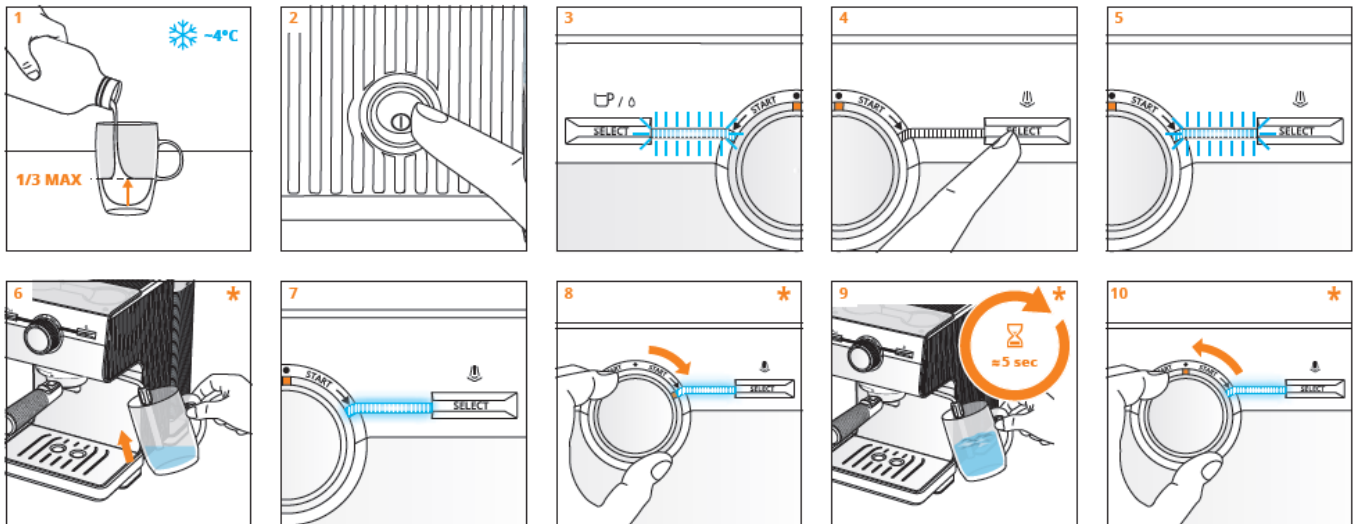
MAKING ESPRESSO WITH E.S.E. PODS (*only on model XP384)

SAME PROCESS AS FOR “MAKING ESPRESSO WITH GROUND COFFEE”, EXCEPT ACTIONS 4 AND 5 TO BE REPLACED BY:



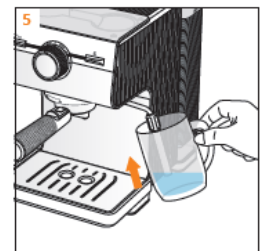
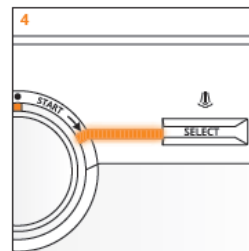
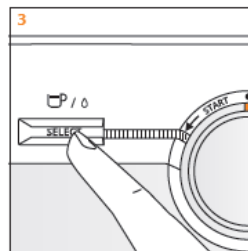
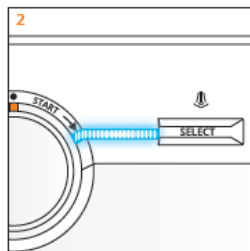
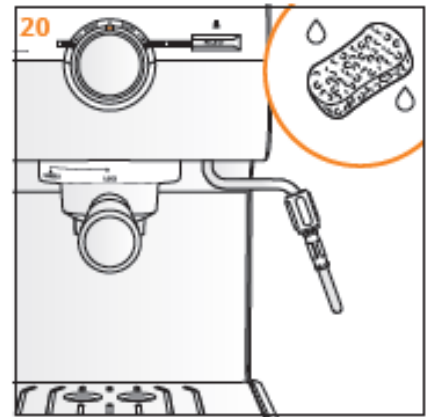
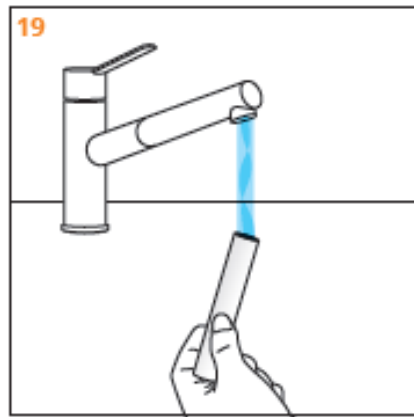
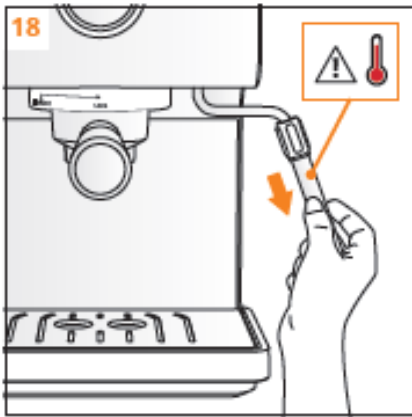
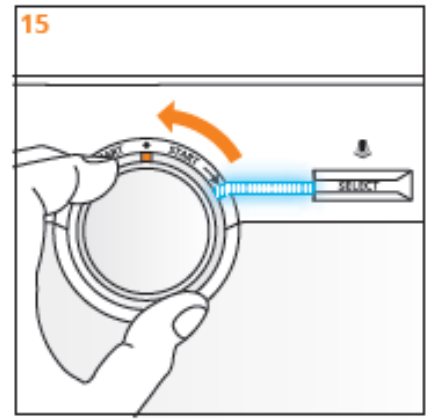
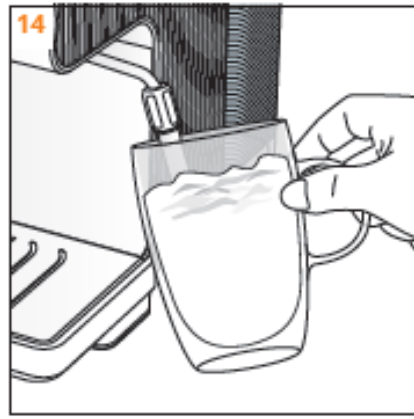
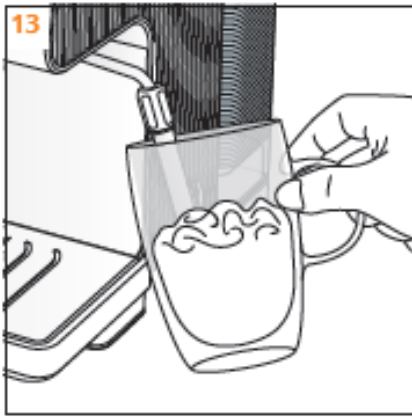
FROTHING MILK

TIP TO REMOVE CONDENSED WATER FROM THE NOZZLE, TO ENSURE BEST RESULTS WHEN FROTHING

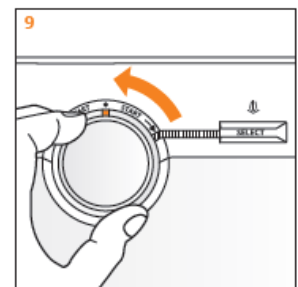
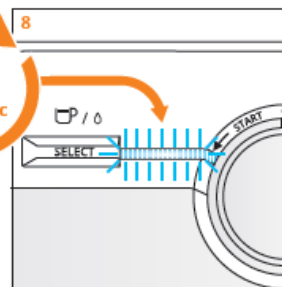
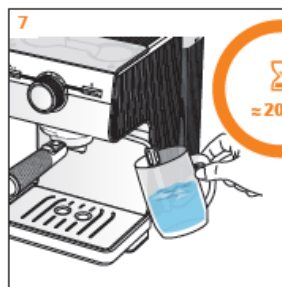
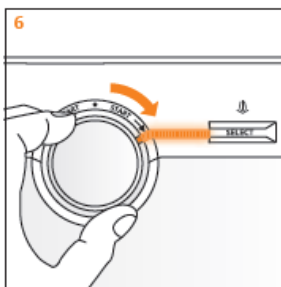


MAKING ESPRESSO AFTER USING STEAM

COOL DOWN THE BOILER SO THAT YOU DON'T BURN YOUR ESPRESSO

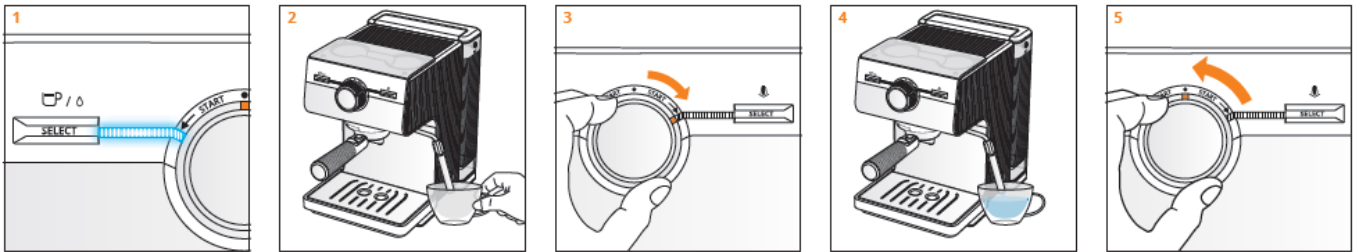


YOU ARE NOW READY TO PREPARE YOUR ESPRESSO



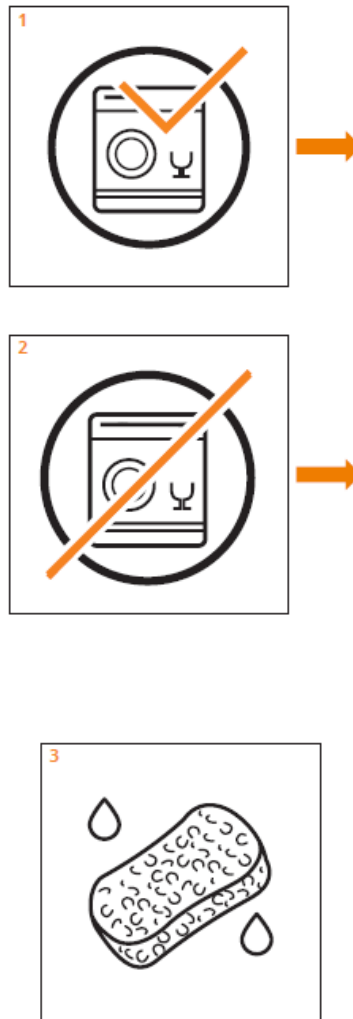
MAKING HOT WATER

*only on model XP384



CLEANING

FILTERS, DRIP TRAY GRID, STAINLESS STEEL STEAM NOZZLE TUBE*



*only on model XP384

Frequently Asked Questions

- **Q: Where can I find the user manual for more detailed instructions?**

A: You can find the user manual by scanning the QR code provided or by visiting www.krups.com

Documents / Resources



[KRUPS XP381B Authentic Espresso Machine \[pdf\]](#) User Guide

XP381, XP384, XP381B Authentic Espresso Machine, XP381B, Authentic Espresso Machine, Espresso Machine, Machine

References

- [User Manual](#)

■ KRUPS

◆ Authentic Espresso Machine, Espresso Machine, KRUPS, Machine, XP381, XP381B, XP381B Authentic Espresso Machine, XP384

Leave a comment

Your email address will not be published. Required fields are marked *

Comment *

Name

Email

Website

☐ Save my name, email, and website in this browser for the next time I comment.

Post Comment

Search:

e.g. whirlpool wrf535swhz

Search

[Manuals+](#) | [Upload](#) | [Deep Search](#) | [Privacy Policy](#) | [@manuals.plus](#) | [YouTube](#)

This website is an independent publication and is neither affiliated with nor endorsed by any of the trademark owners. The "Bluetooth®" word mark and logos are registered trademarks owned by Bluetooth SIG, Inc. The "Wi-Fi®" word mark and logos are registered trademarks owned by the Wi-Fi Alliance. Any use of these marks on this website does not imply any affiliation with or endorsement.