



KREMER sino NTG5.0 iSmart Auto Wireless Carplay and Android Auto Smart Module User Manual

[Home](#) » [KREMER sino](#) » KREMER sino NTG5.0 iSmart Auto Wireless Carplay and Android Auto Smart Module User Manual 

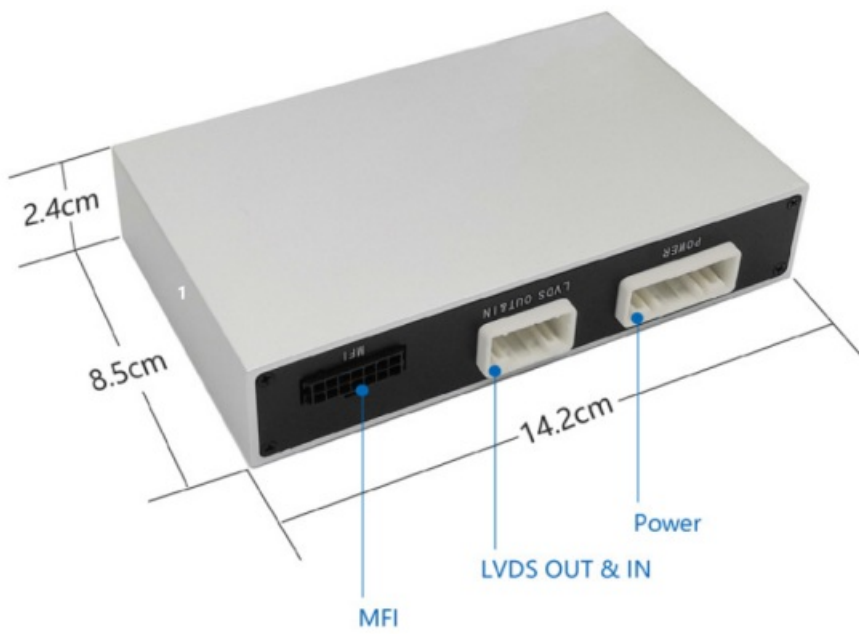
KREMER sino NTG5.0 iSmart Auto Wireless Carplay and Android Auto Smart Module User Manual

Contents

- [1 Packing List](#)
- [2 Function introduction](#)
- [3 Connection Diagram](#)
- [4 Main Parameters & Specifications](#)
- [5 Warranty Terms](#)
- [6 Interface introduction](#)
- [7 Installation Process](#)
- [8 Voice Setting](#)
- [9 Button description](#)
- [10 Wireless CarPlay Connection Method](#)
- [11 Android auto Connect Method](#)
- [12 iPhone Wireless Mirroring](#)
- [13 Android Wireless Mirroring](#)
- [14 Camera settings](#)
- [15 Echo cancellation](#)
- [16 iPhone / Android Phone Setting](#)
- [17 FCC Caution](#)
- [18 Documents / Resources](#)
- [19 Related Posts](#)

Packing List

1. iSmart CarPlay Main Box



2. Main harness



3. LVDS Cable



4. Rear Camera Connector



5. Antenna Cable



6. USB-AUX adapter



7. Microphone Cable



Function introduction

- CarPlay



The iPhone's built-in car-machine interaction system works with the central control knob button to operate the voice control phone, information, navigation, music and Siri voice interaction for more information; supports wireless and wired connections to CarPlay

- **CarLife**



The car and machine care system developed by Baidu, supports the connection of iPhone and Android devices, voice control of telephone, information, navigation, and music; built-in "Xiaodu" voice control system, supports wireless and wired connections

- **AndroidAuto**



The original ecological Android car-machine interaction system developed by Google, voice control phone, information, navigation, music built-in voice control system;

- **Front/Rear/360**



The intelligent module can decode video, and can be equipped with front view, rear view (support display intelligent dynamic trajectory and radar), right view and 360 panoramic view

- **Mirroring**



Supports wired and wireless screen projection for iPhone and Android phones

- **AHD HD video protocol**



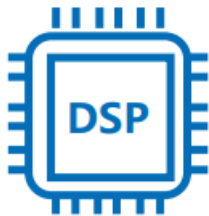
Added AHD HD rear view/360 video output interface

- **USB video**



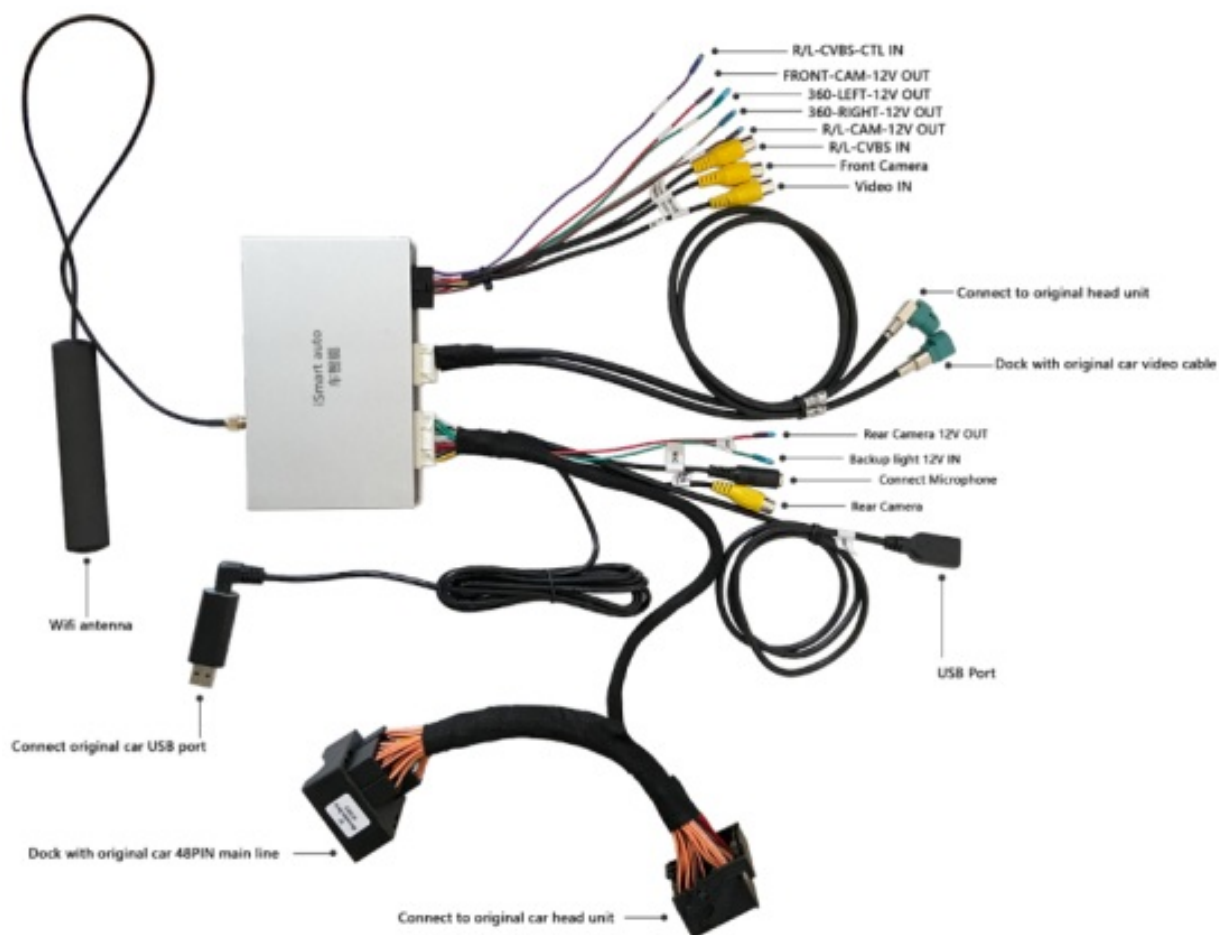
Automatic media playback function, can directly insert U disk to play audio and video media

- **DSP Power amplifier chip**



Add DSP power amplifier chip to improve sound quality

Connection Diagram



Main Parameters & Specifications

Operating voltage 9-16V 14.4V rated	Storage temperature -30~+85°C
Operating temperature -30~+75°C	Ambient humidity ≤98% at45°C 65±5% rated
Power consumption current 1A rated 3A Max	Shutdown current Current 300mA Clock is on
Quiescent current: less than 3mA	
Charging current: ≤2A when the USB charging current >1A the host machine should activate the circuit protection function to control the current within 1.5A and avoid products burning	

Warranty Terms

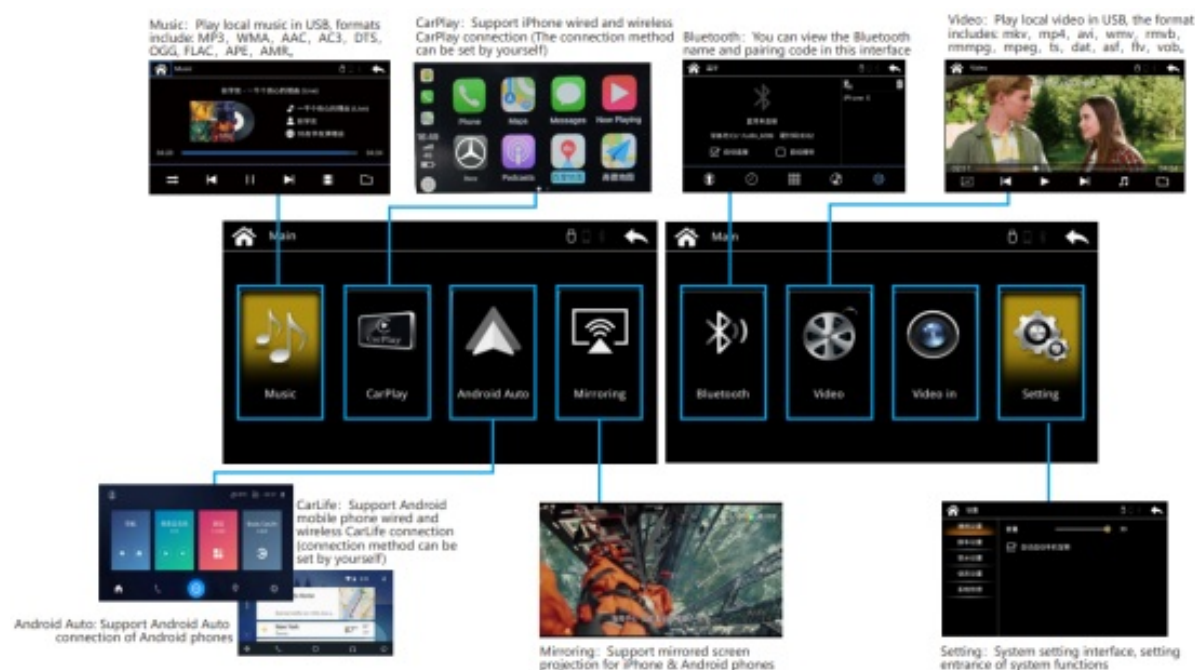
Dear user:

Thank you for using our products. In order to make sure customers receive product is good, all our products have been strictly tested in our factory before delivery. And all our products enjoy 1 year warranty.

But following conditions are not converted by warranty:

1. Warranty period over; the appearance with scratches dirt, deformation.
2. Information on Warranty car and purchase bill inconsistent with product, or modified.
3. There is no bar code or bar code not clearly on host unit.
4. Damage caused by using, disassembling or refitting product not follow the instruction properly.
5. Not our company authorized personnel disassemble. repair or refit to cause human made damage.
6. The product damaged by improper transport or improper use.
7. Damage due to irresistible factors (such as fire, flood, traffic matters Therefore, lightning, earthquakes, etc.).

Interface introduction



Note: To use CarLife or Android Auto, you need to enter the system setting selection

Installation Process

Tools you need to prepare

1. 1 * panel remover
2. 1 * T20 screwdriver
3. 1 * T10 screwdriver(some car models need it to dis-assembly the glovebox)
4. Tape and towel-protect the trim and panel, collect harness

Remark : Make Sure Car Engine Off Before The Installation. Open/Close The Driver Side Door ONCE, Wait Centre Screen Turns Black

Please adjust the DIP switch according to the current screen size



A/C/GLC 7" HHHHH

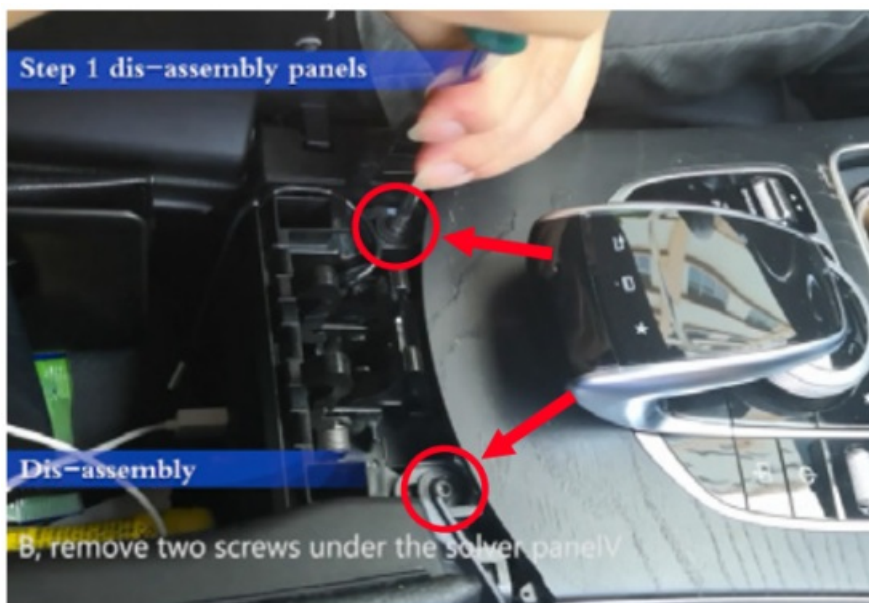
1 2 3 4 5 DIP Switch: 8.4" HHHHL

GLE/GLA/B/CLS 8.4" LHHLH

1. Remove the silver panel on the control board



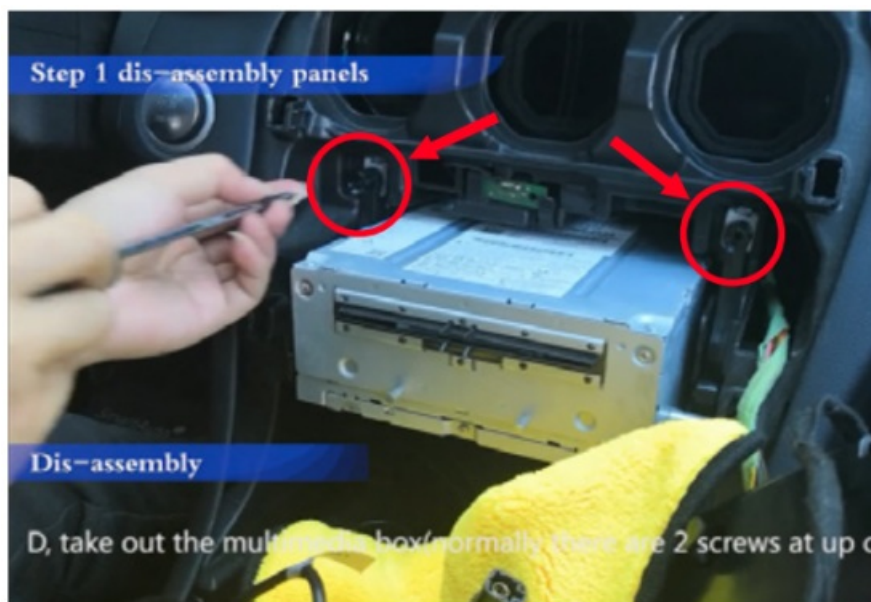
2. Remove the two screws under the silver panel



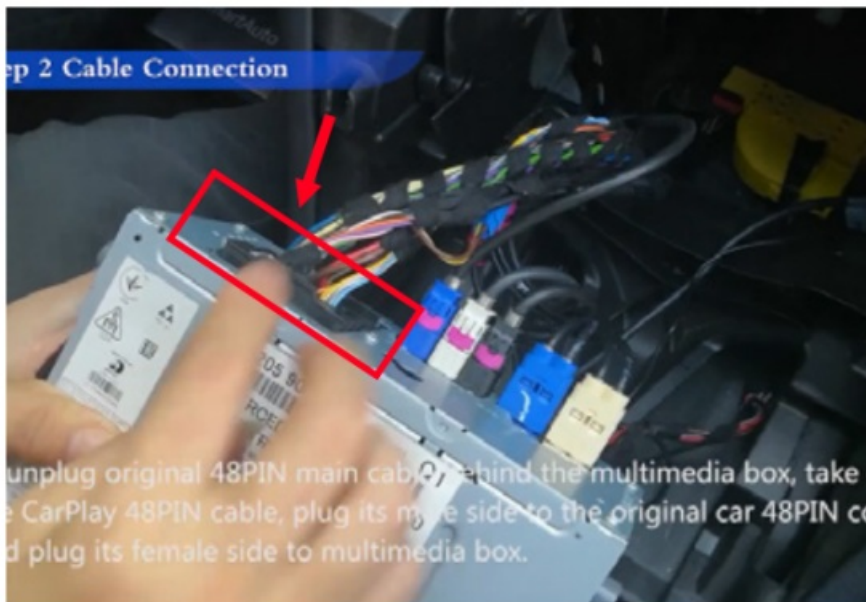
3. Pull up the main ACC panel with little strength



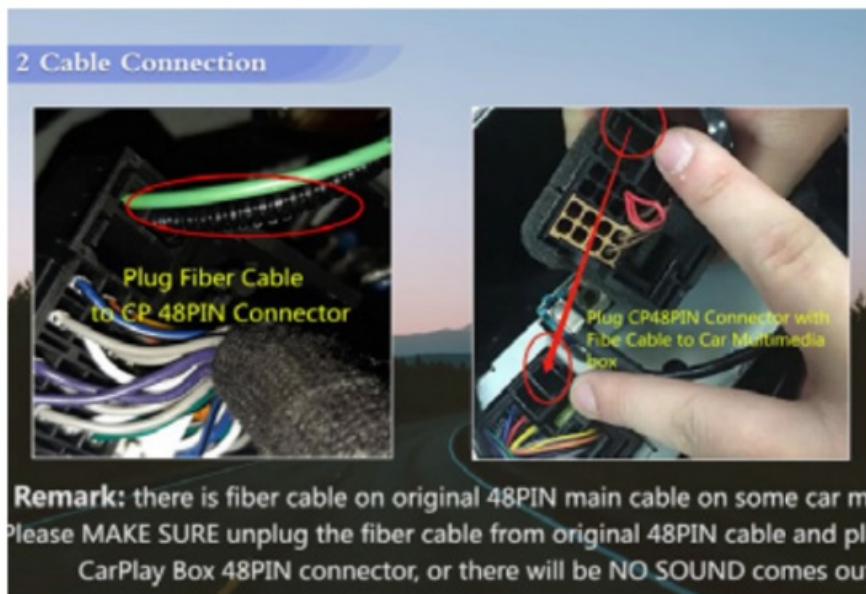
4. Remove the two screws on the head unit



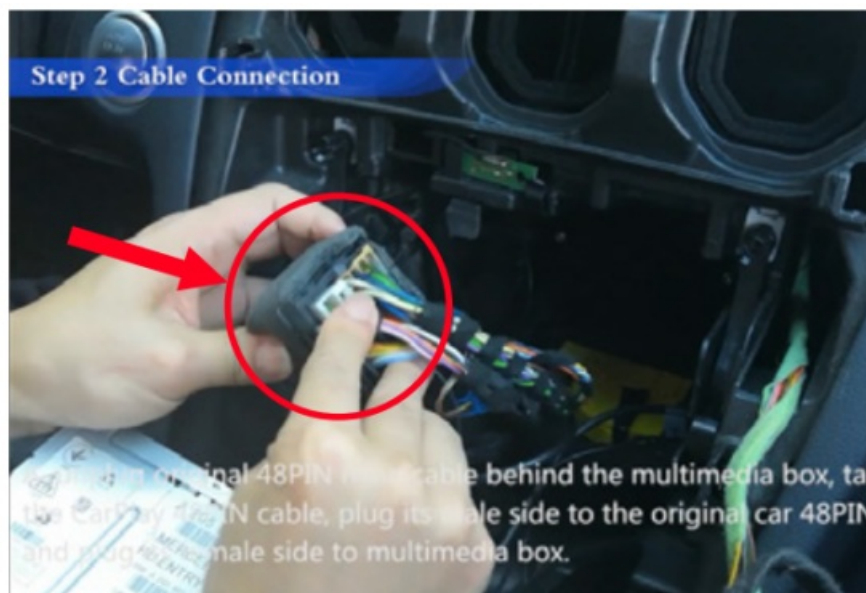
5. Take out the head unit and unplug the original 48PIN main cable



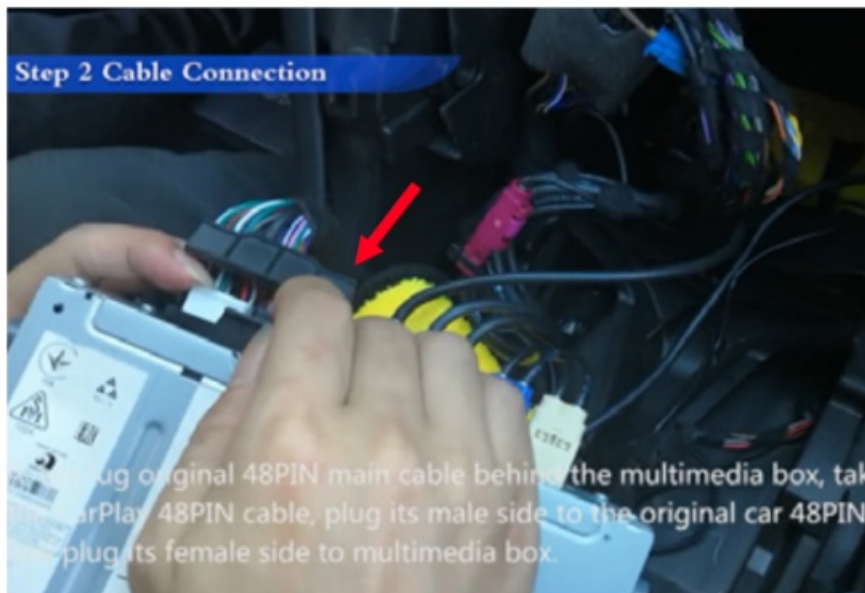
6. **Remark:** there is fiber cable on original car 48PIN main cable on some car models. please MAKE SURE unplug the fiber cable from original car 48PIN cable and plug it to CarPlay box 48PIN connector, or there will be NO SOUND comes out.



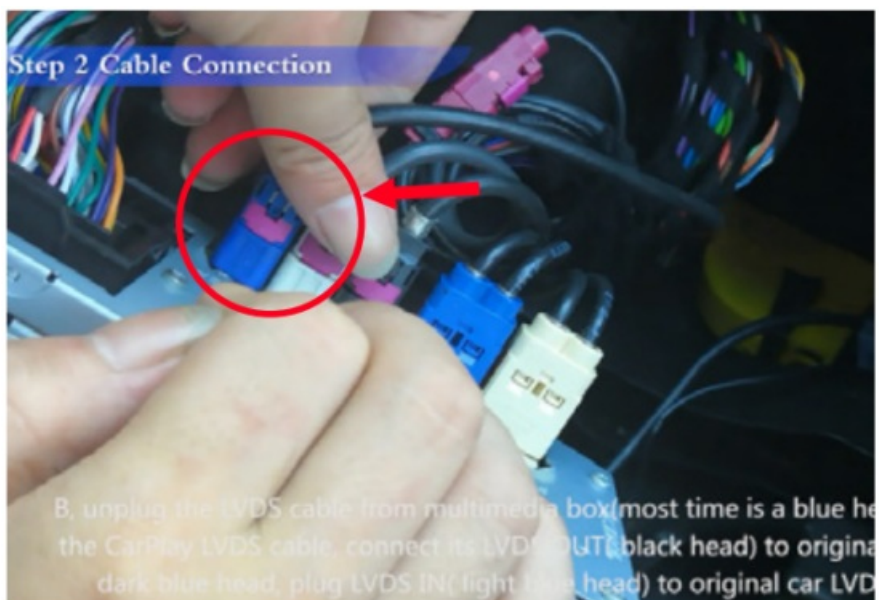
7. Take out the CarPlay 48PIN cable, plug its male side to the original car 48PIN connector.



8. Plug the CarPlay 48PIN cable female side to the multimedia box



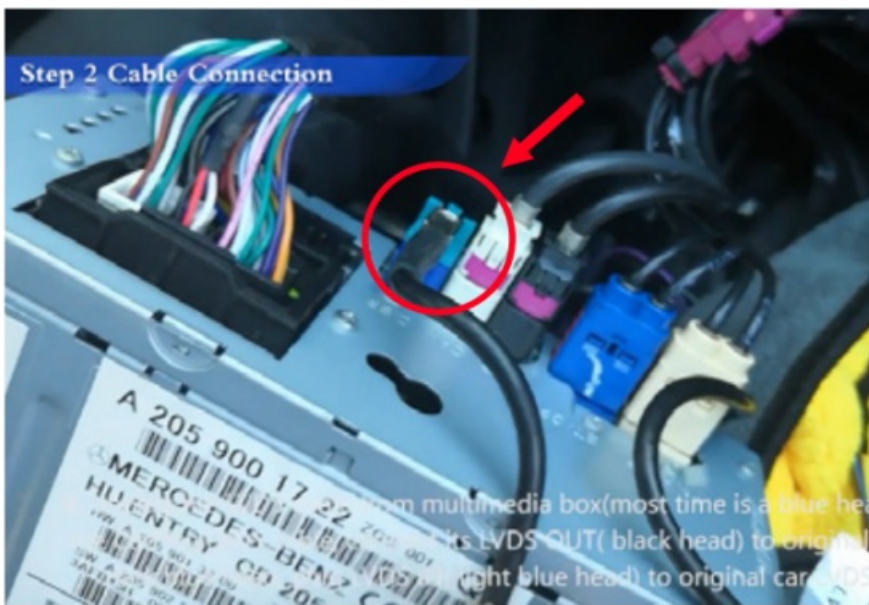
9. Unplug the LVDS cable from multimedia box most time is a blue head



10. Connect original car LVDS cable with carplay box LVDS cable



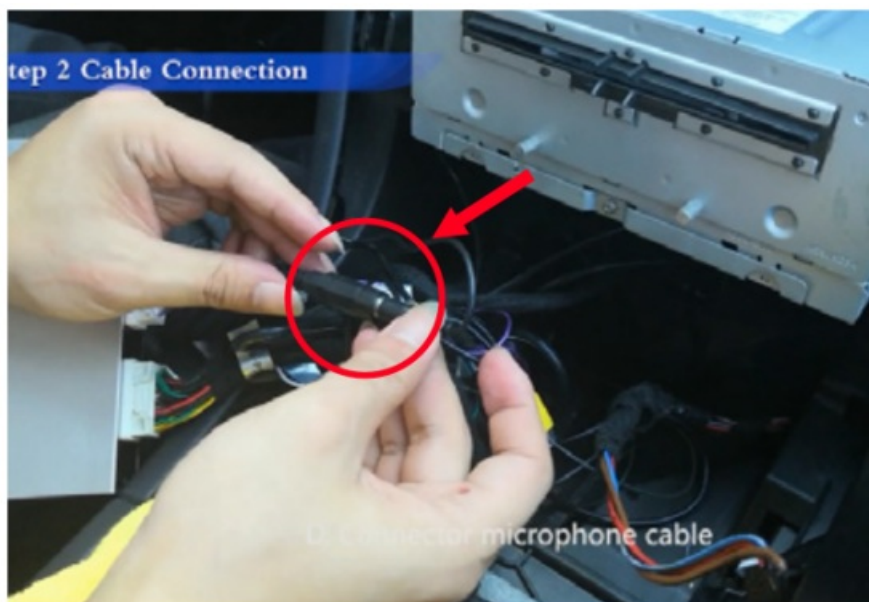
11. Plug the iSmart CarPlay LVDS cable to original car LVDS adapter.



12. Connect the power cable (white one) to the carplay box, Connect the antenna cable



13. Connect the microphone cable.



14. Enter the original media interface.



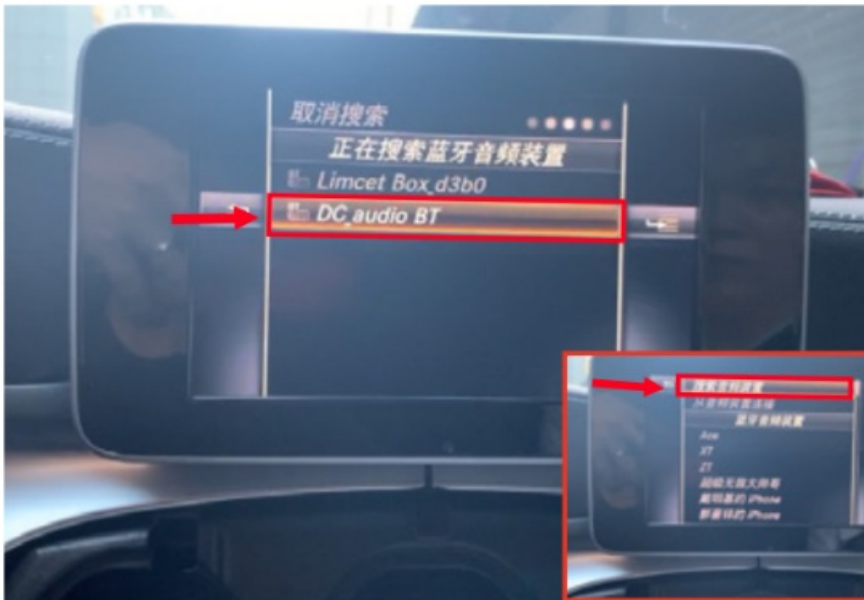
15. Select Bluetooth audio.



16. Select "Options"- "Bluetooth Audio Device"



17. Select "Search Audio Device" and start searching then select "DC_audio BT"



18. Click “Yes” to verify. On this interface long press phone-ending button to switch to carplay interface



19. Keep phone WIFI ON, Open phone Bluetooth and searching(Find the Bluetooth name and pairing code of iSmart box) .Insert pairing code



20. Click USE Carplay on your phone side. Orit will keep at searching interface.



Voice Setting

1. Enter the original media interface.



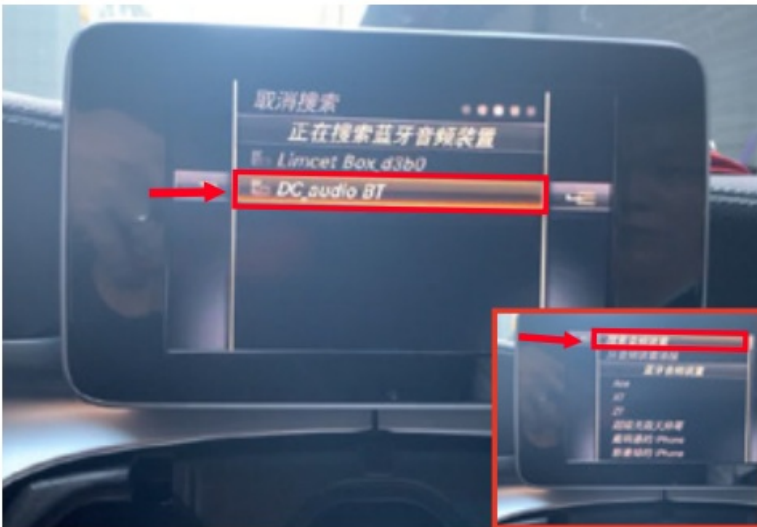
2. Select Bluetooth audio.



3. Select "Options"-"Bluetooth Audio Device"



4. Select "Search Audio Device" and start searching then select "DC_audio BT"



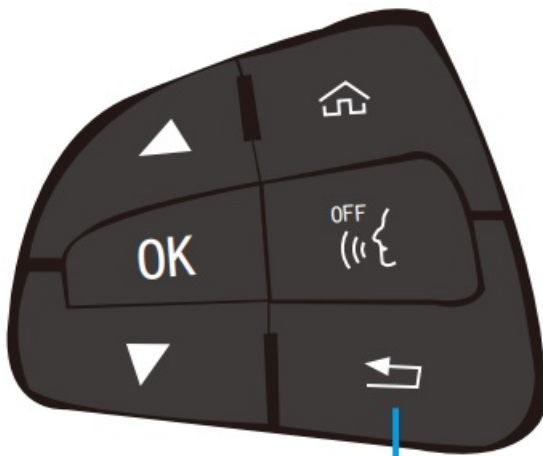
5. Click "Yes" to verify. On this interface long press phone-ending button to switch to carplay interface



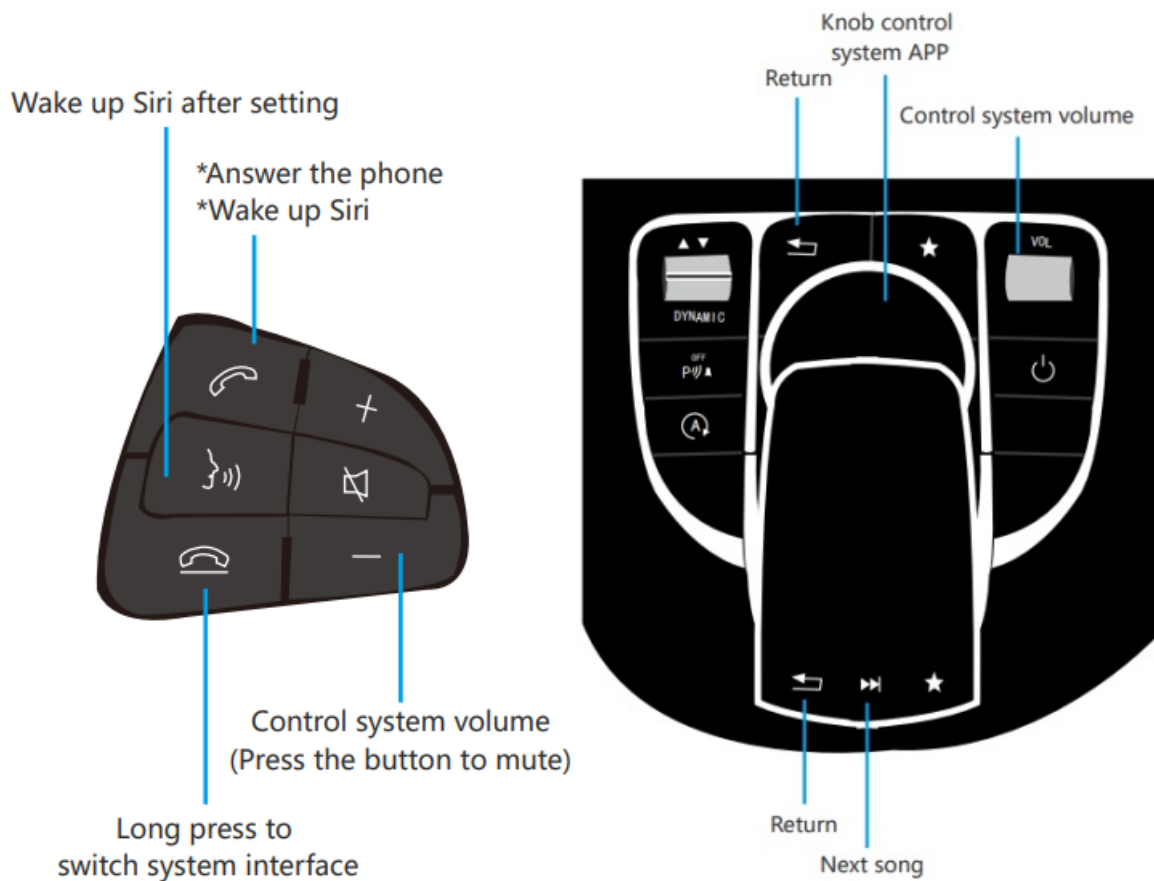
6. Enjoy wireless CarPlay after connect your phone



Button description



Return



Wireless CarPlay Connection Method

1. Long press the phone-ending button of the original car to switch to the CarPlay main system interface, find the Bluetooth function option and click to enter



2. Check the Bluetooth name of CarPlay on the "Bluetooth" system interface



3. Turn on the phone WiFi and keep it turned on, then enter the phone Bluetooth interface, click and connect CarPlay Bluetooth



4. Click on the Bluetooth name beginning with the link "Limcet-Box-", a pairing request will pop up, just click on pairing; after the Bluetooth pairing is successful, the phone will pop up a request to enable the carplay option, click on confirm.



5. CarPlay connection is successful, you can use wireless CarPlay



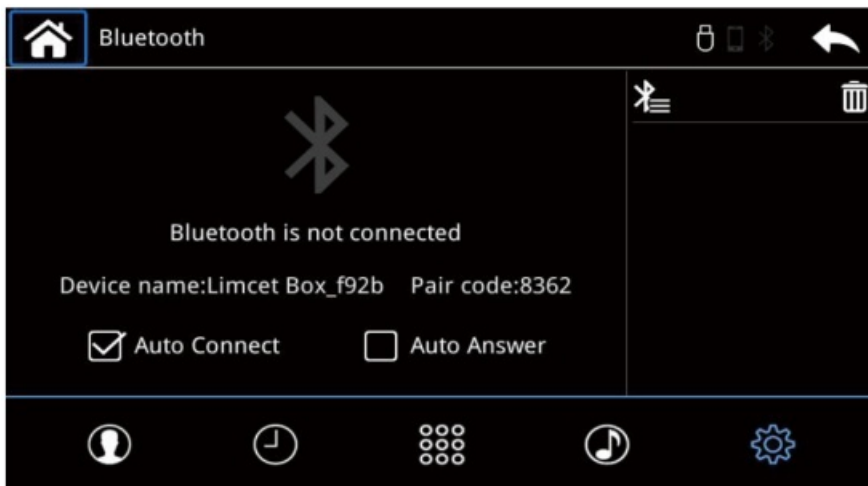
Android auto Connect Method

Before connecting to use Android Auto you need to download and install Android Auto App on your phone in advance

1. Long press the phone-ending button of the original car to switch to the CarPlay main system interface, find the Bluetooth function option and click to enter



2. In the Bluetooth interface of CarPlay, you can view the Bluetooth name and pairing code of CarPlay; check Auto Connect, the next time you get in the car, the Bluetooth of the phone will automatically connect



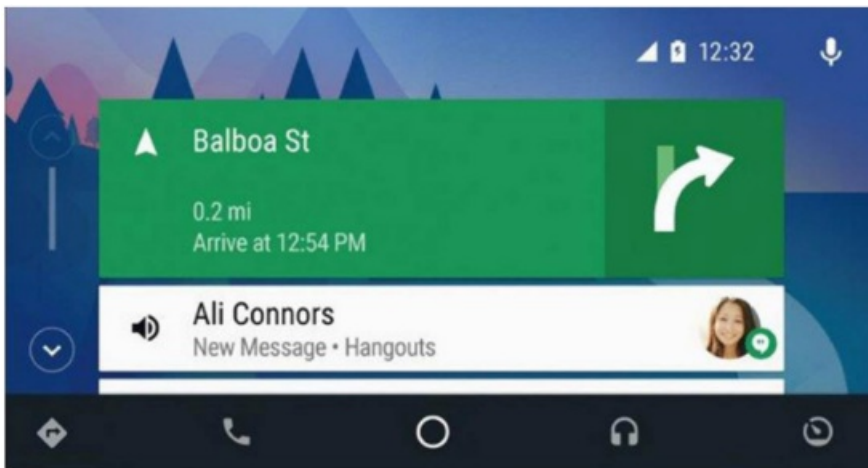
3. Turn on the phone WiFi and keep it turned on, then enter the phone Bluetooth interface, click and connect CarPlay Bluetooth



- Click on the Bluetooth name beginning with the link "Limcet-Box-", a pairing request will pop up, just click on pairing;

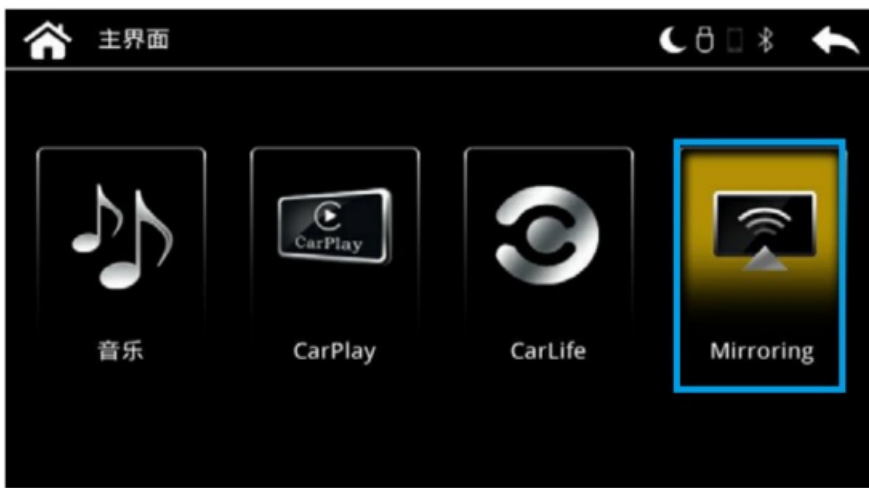


- After the Bluetooth connection is successful, it will automatically connect to Android Auto. After entering the Android auto page, the system supports the original car touch or knob and other corresponding buttons to seamlessly operate the Android auto page APP



iPhone Wireless Mirroring

- Long press the phone-ending button of the original car to switch to the CarPlay main system interface, find the Mirroring function option and click to enter



2. Select iphone option in Mirroring function



3. Take out the iPhone, find the “Wireless LAN” function option and enter; open the “Wireless LAN” function option, then the carplay-wifi name will appear in the search bar and click on this wifi, the password is 88888888



4. After the carplay wifi connection is successful, the phone returns to the main interface, opens the shortcut menu bar, selects “Screen mirroring” and opens



5. After the mobile phone "Screen mirroring" is turned on, select "Mirroring" to complete the wireless projection



Android Wireless Mirroring

1. To use Android wireless mirroring, you need to download a "MLink" software first, and you can obtain the "Android wireless APK software" from the dealer



2. Long press the phone-ending button of the original car to switch to the CarPlay main system interface, find the Bluetooth function option and click to enter



3. Check the Bluetooth name on the "Bluetooth" system interface



4. Take out the Android phone, find the "Bluetooth" function option, and find the name starting with "Limcet-Box-" in the Bluetooth search bar, click connect; click the link "Limcet-Box-" starting with the Bluetooth name, a pairing request will pop up, click pairing



- Long press the phone-ending button of the original car to switch to the CarPlay main system interface, find the Mirroring function option and click to enter



- Select the "Mirroring" function option and adjust it to "Android" to prompt the phone to establish a mobile hotspot for communication.

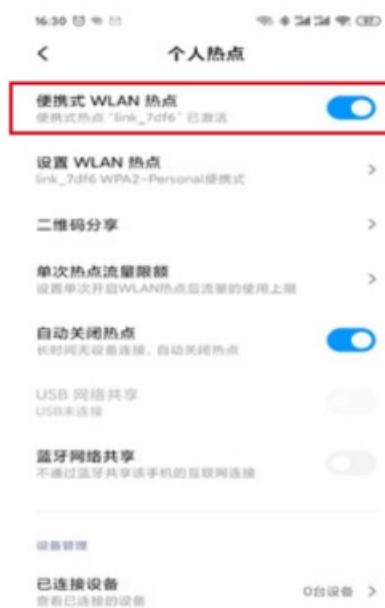
The hotspot name and password are displayed in the lower left corner of the connection interface



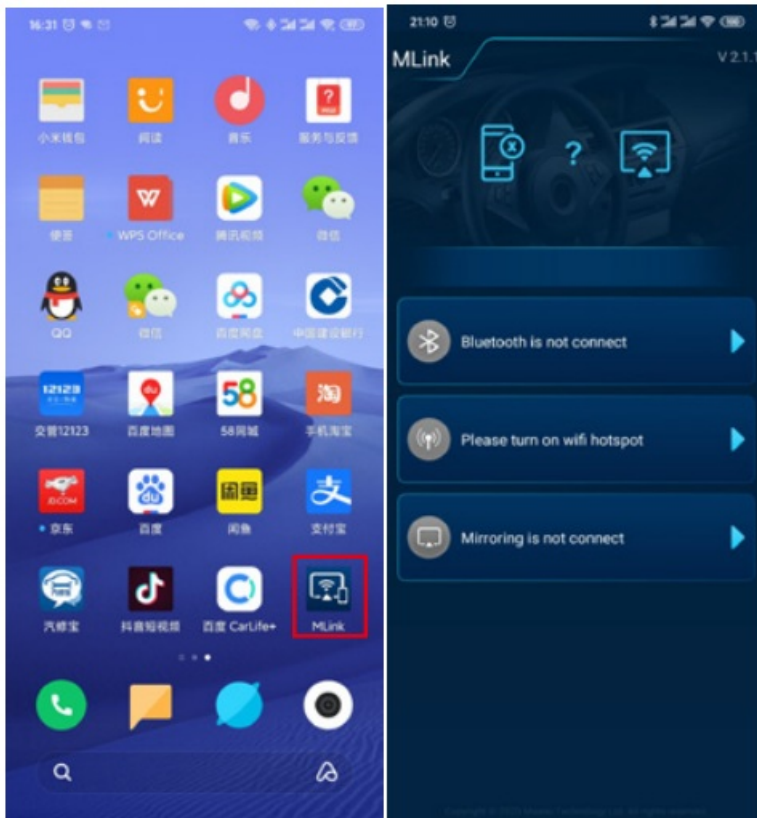
- Enter the phone settings function and find "Personal Hotspot";



8. Set the name and password of “Personal Hotspot” to be consistent with the name and password prompted on the “Mirroring” interface. Select “5.0 GHz Band” for the hotspot AP band; turn on the “Personal Hotspot” switch

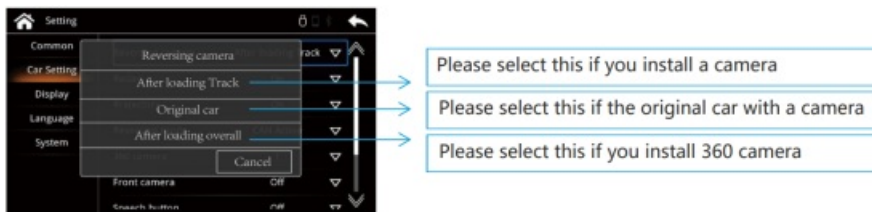


9. Return to the main interface of the phone and open “MLink” to use wireless mirroring

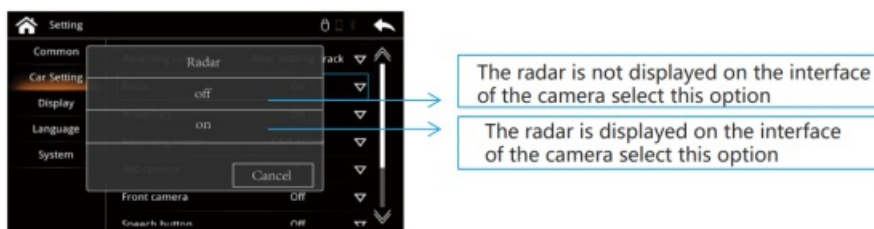


Camera settings

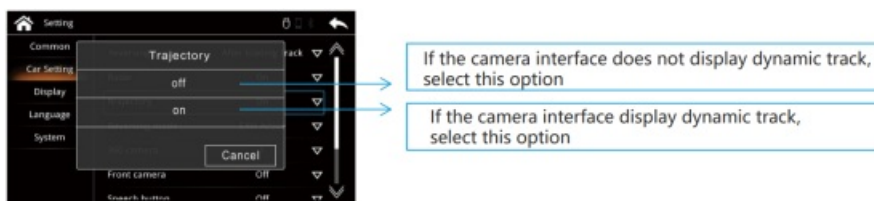
- CarPlay System – Setting – Car Setting – Reversing cammera



- CarPlay System – Setting – Car Setting- Radar

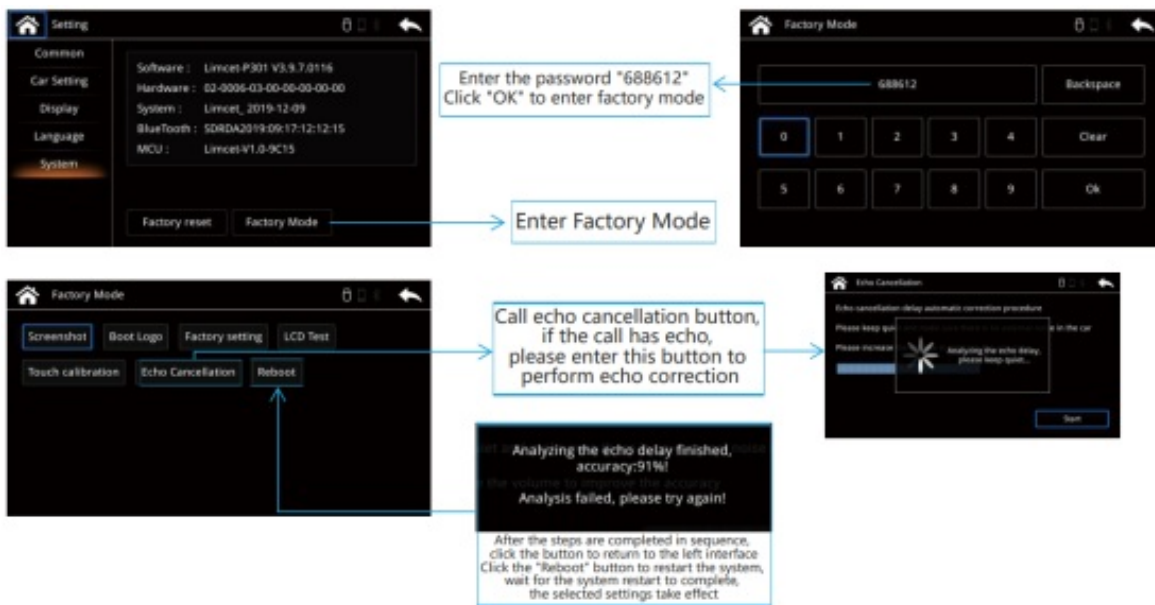


- CarPlay System – Setting – Car Setting – Trajectory



Echo cancellation

- CarPlay System – Setting – System

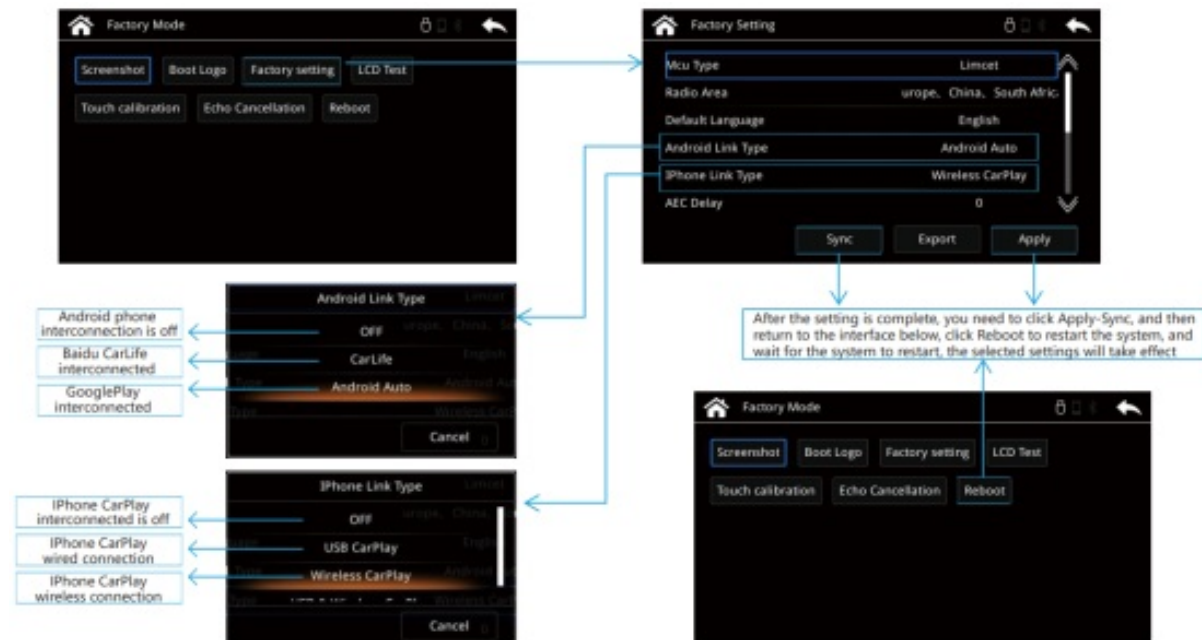


When correcting the echo, you must keep:

1. The environment in the car is quiet;
2. The sound channel must be set to the AUX channel that the system can recognize;
3. Turn the volume to a moderate position, then click "Start" to start echo correction,
The larger the final correction value, the better, as shown on the left

iPhone / Android Phone Setting

CarPlay System – Setting – System – Factory mode – Factory setting



FCC Caution

§ 15.19 Labelling requirements.

This device complies with part 15 of the FCC Rules. Operation is subject to the following two conditions:

- (1) This device may not cause harmful interference, and
- (2) this device must accept any interference received, including interference that may cause undesired operation.

§ 15.21 Changes or modification warning

Any Changes or modifications not expressly approved by the party responsible for compliance could void the user's authority to operate the equipment.

§ 15.105 Information to the user.

Note: This equipment has been tested and found to comply with the limits for a Class B digital device, pursuant to part 15 of the FCC Rules. These limits are designed to provide reasonable protection against harmful interference in a residential installation. This equipment generates uses and can radiate radio frequency energy and, if not installed and used in accordance with the instructions, may cause harmful interference to radio communications.

However, there is no guarantee that interference will not occur in a particular installation. If this equipment does cause harmful interference to radio or television reception, which can be determined by turning the equipment off and on, the user is encouraged to try to correct the interference by one or more of the following measures:

- Reorient or relocate the receiving antenna.
- Increase the separation between the equipment and receiver.
- Connect the equipment into an outlet on a circuit different from that to which the receiver is connected.
- Consult the dealer or an experienced radio/TV technician for help.

This equipment complies with FCC radiation exposure limits set forth for an uncontrolled environment. This equipment should be installed and operated with minimum distance 20cm between the radiator and your body.

Kremersino technology ltd

Web <https://kremersino.com>


Email sales@kremersino.com

WhatsApp +86 134 2516 3678

Telegram: @MichaelKremersino



Documents / Resources

	<p>KREMER sino NTG5.0 iSmart Auto Wireless Carplay and Android Auto Smart Module [pdf] User Manual</p> <p>NBT1, 2AZOL-NBT1, 2AZOLNBT1, NTG5.0 iSmart Auto Wireless Carplay and Android Auto Smart Module, Android Auto Smart Module, NTG5.0 iSmart Auto Wireless Carplay, iSmart Auto Wireless Carplay, Auto Wireless Carplay, Wireless Carplay, Carplay</p>
---	--

[Manuals+](#)