



KREMER sino kSmart Auto Wireless CarPlay and Android Auto Smart Module User Manual

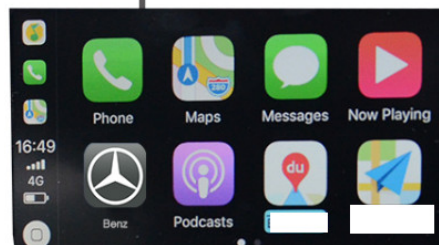
[Home](#) » [KREMER sino](#) » KREMER sino kSmart Auto Wireless CarPlay and Android Auto Smart Module User Manual



**kSmart auto Wireless CarPlay & Android Auto Smart Module
Product Manual For Mercedes Benz NTG5.0**

kSmart auto Wireless CarPlay

Factory direct sales ·
Non-destructive installation ·
Original car upgrade ·
Continuous upgrade service ·

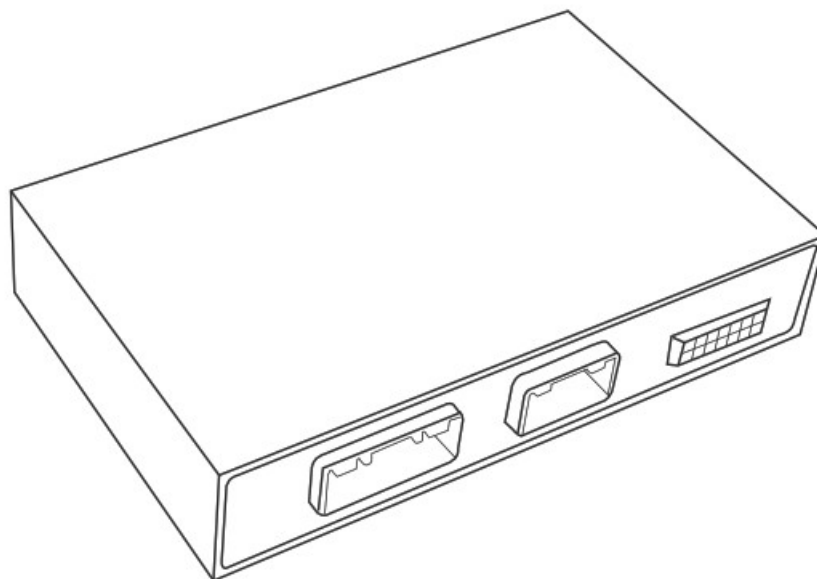


Contents [[hide](#)]

- 1 [kSmart Auto Wireless CarPlay and Android Auto Smart Module](#)
- 2 [Packing List](#)
- 3 [Function introduction](#)
- 4 [Connection Diagram](#)
- 5 [Main Parameters & Specifications](#)
- 6 [Warranty Terms](#)
- 7 [Interface introduction](#)
- 8 [Installation Process](#)
- 9 [Button description](#)
- 10 [Wireless CarPlay Connection Method](#)
- 11 [Android auto Connect Method](#)
- 12 [iPhone Wireless Mirroring](#)
- 13 [Android Wireless Mirroring](#)
- 14 [Camera settings](#)
- 15 [Echo cancellation](#)
- 16 [iPhone / Android Phone Setting](#)
- 17 [Documents / Resources](#)
- 18 [Related Posts](#)

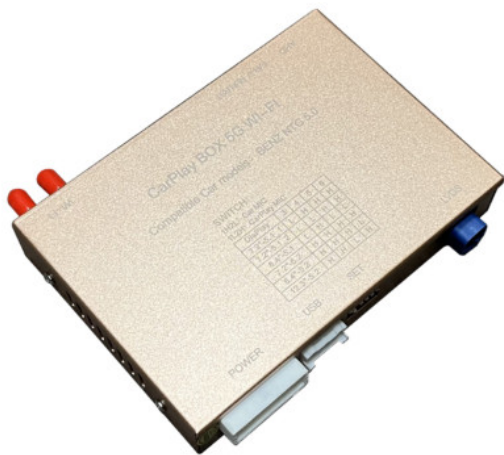
kSmart Auto Wireless CarPlay and Android Auto Smart Module

Factory direct sales · Non-destructive installation · Original car upgrade · Continuous upgrade service



**kSmart auto Box
Wireless CarPlay Smart Module**

Packing List



1 kSmart CarPlay Main Box



2 Main harness



3 LVDS Cable



4 USB Cable



5 Reversing wiring harness



6 Antenna x 2

Function introduction



CarPlay



CarLife



AndroidAuto



Front/Rear/360



Mirroring



AHD HD video protocol



USB video



DSP Power amplifier chip

- CarPlay

The iPhone's built-in car-machine interaction system works with the central control knob button to operate the voice control phone, information, navigation, music and Siri voice interaction for more information; supports wireless and wired connections to CarPlay

- CarLife

The car and machine care system developed by Baidu, supports the connection of iPhone and Android devices, voice control of telephone, information, navigation, and music; built-in "Xiaodu" voice control system, supports wireless and wired connections

- AndroidAuto

The original ecological Android car-machine interaction system developed by Google, voice control phone, information, navigation, music built-in voice control system;

- Front/Rear/360

The intelligent module can decode video, and can be equipped with front view, rear view (support display intelligent dynamic trajectory and radar), right view and 360 panoramic view

- Mirroring

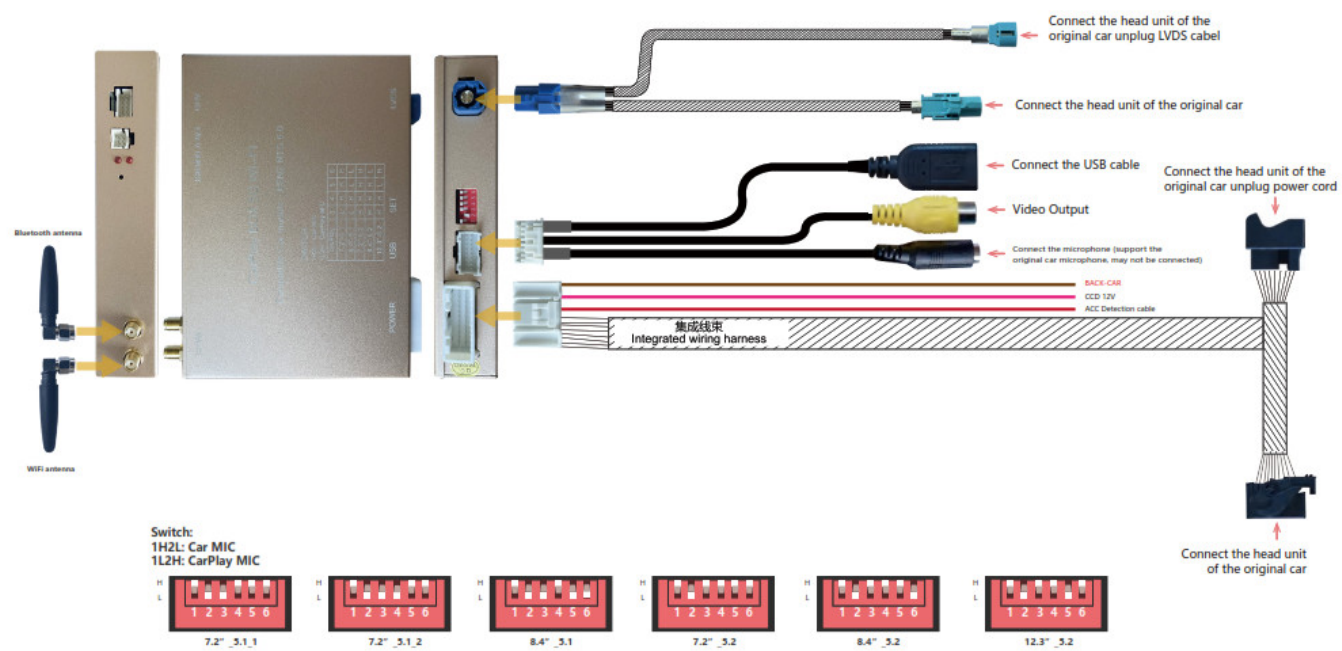
Supports wired and wireless screen projection for iphone and Android phones

- AHD HD video protocol

Added AHD HD rear view/360 video output interface

- USB video
Automatic media playback function, can directly insert U disk to play audio and video media
- DSP Power amplifier chip
Add DSP power amplifier chip to improve sound quality

Connection Diagram



Main Parameters & Specifications

Operating voltage: 9-16V, 14.4V (rated)	Storage temperature: -30—+85°C
Operating temperature: -30—+75°C	Ambient humidity: s98% (at45°C) , 65±5% (rated)
Power consumption current: 1A (rated) , 3A (Max)	Shutdown current: Current: 300mA (Clock is on)
Quiescent current: less than 3mA	
Charging current: s2A, when the USB charging current >1A, the host machine should activate the circuit protect function to control the current within 1.5A and avoid products burning	

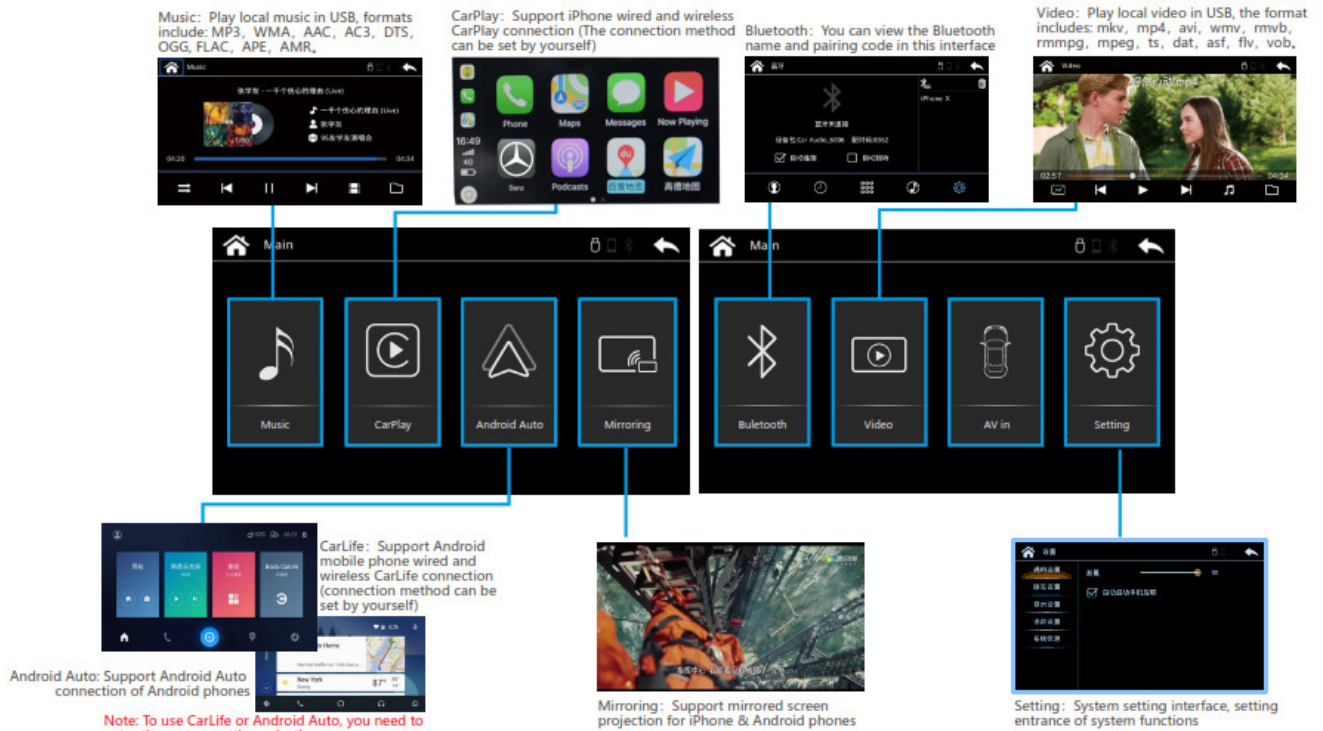
Warranty Terms

Dear user: Thank you for using our products. In order to makesure customers receive product is good, all our products have been strictly tested in our factory before delivery. And all our products enjoy 1 year warranty. But following conditions are not convered by warranty:

1. Warranty period over; the apperance with scratches dirt, deformation.
2. Information on Warranty car and purchase bill inconsistent with product, or modified.
3. There is no bar code or bar code not clearly on host unit.
4. Damage caused by using, disassembling or refitting product not follow the instruction properly.
5. Not our company authorized personnel disassemble. repair or refit to cause human made damage.

6. The product damaged by improper transport or improper use.
7. Damage due to irresistible factors (such as fire, flood, traffic matters. Therefore, lightning, earthquakes, etc.).

Interface introduction



Installation Process

Tools you need to prepare

1. 1 * panel remover
2. 1 * T20 screwdriver
3. 1 * T10 screwdriver (some car models need it to dis-assemble the glovebox)
4. Tape and towel-protect the trim and panel, collect harness

Remark : Make Sure Car Engine Off Before The Installation. Open/Close The Driver Side Door ONCE, Wait Centre Screen Turns Black





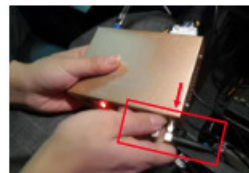
11. Plug the fiber cable to CarPlay box 48PIN connector



12. Plug the CarPlay 48PIN main line to the multimedia box.



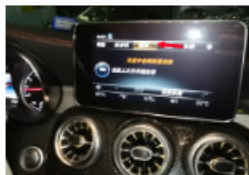
13. Connect the power cable (white one) to the carplay box, Connect the USB cable



14. Connect the Bluetooth antenna and WiFi antenna



15. CarPlay installation is complete, restore the original car layout. It is recommended that the module be placed on the co-pilot's floor



16. Enter the original media interface.



17. Select AUX audio.



18. On this interface long press phone-ending button to switch to carplay interface



19. Keep phone WIFI ON, Open phone Bluetooth and searching (Find the Bluetooth name and pairing code of Smart box). Insert pairing code



20. Click USE Carplay on your phone side. Orit will keep at searching interface.

Voice Setting



1. Enter the original media interface.



2. Select AUX audio.



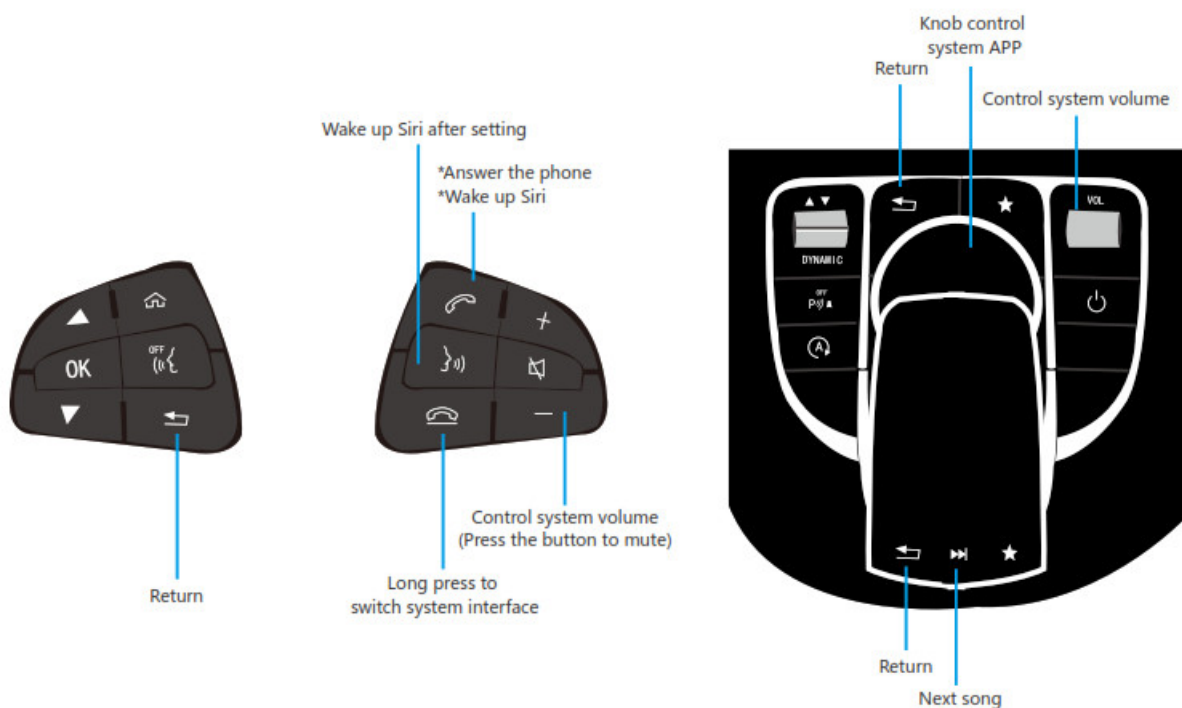
3. On this interface long press phone-ending button to switch to carplay interface



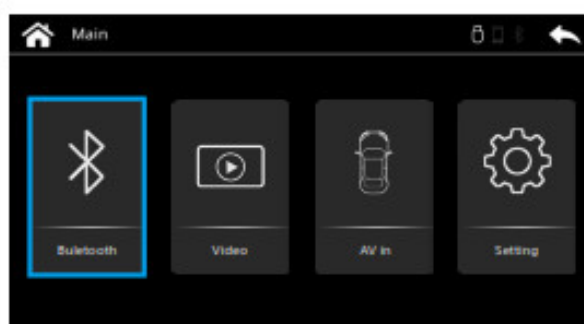
4. Connect your phone to enjoy wireless CarPlay

3

Button description



Wireless CarPlay Connection Method



1. Long press the phone-ending button of the original car to switch to the CarPlay main system interface, find the Bluetooth function option and click to enter



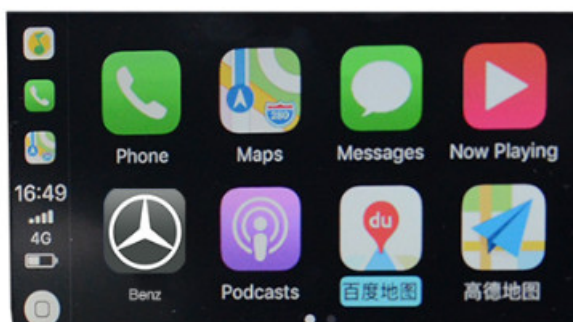
2. Check the Bluetooth name of CarPlay on the “Bluetooth” system interface



3. Turn on the phone WiFi and keep it turned on, then enter the phone Bluetooth interface, click and connect CarPlay Bluetooth



4. Click on the Bluetooth name beginning with the link “Car Audio-“, a pairing request will pop up, just click on pairing; after the Bluetooth pairing is successful, the phone will pop up a request to enable the carplay option, click on confirm.

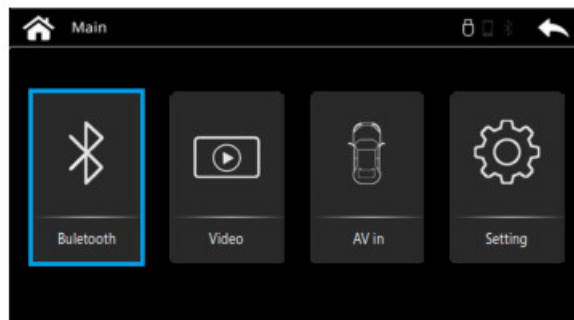


5. CarPlay connection is successful, you can use wireless CarPlay

Android auto Connect Method

Before connecting to use Android Auto you need to download and install Android Auto App on your phone in

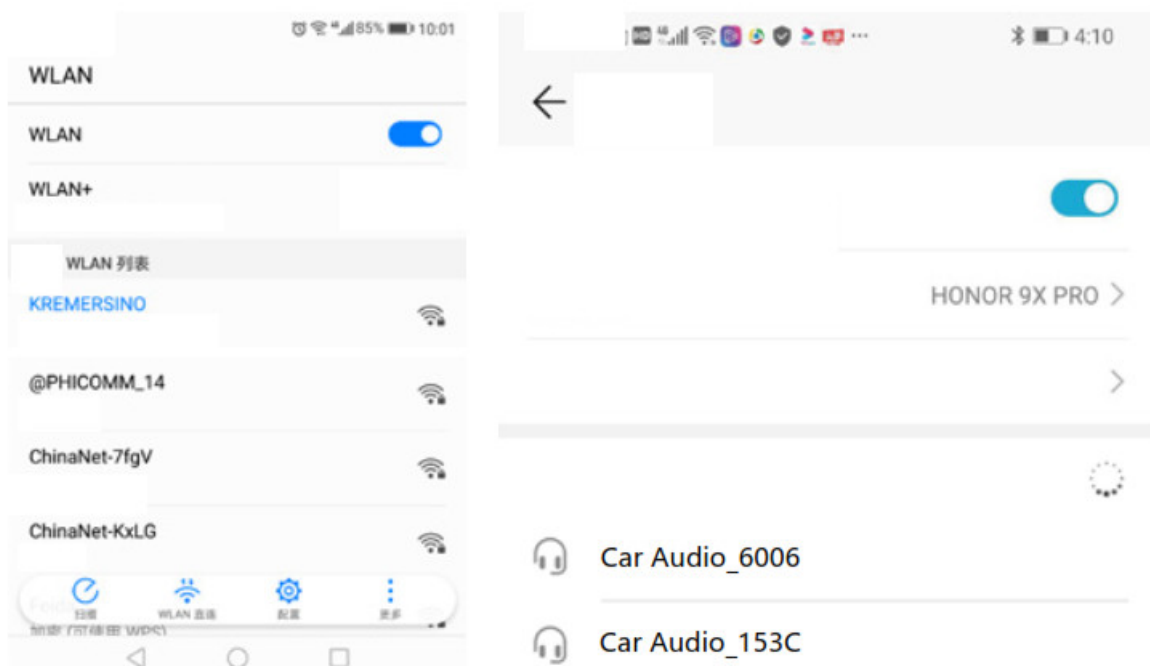
advance



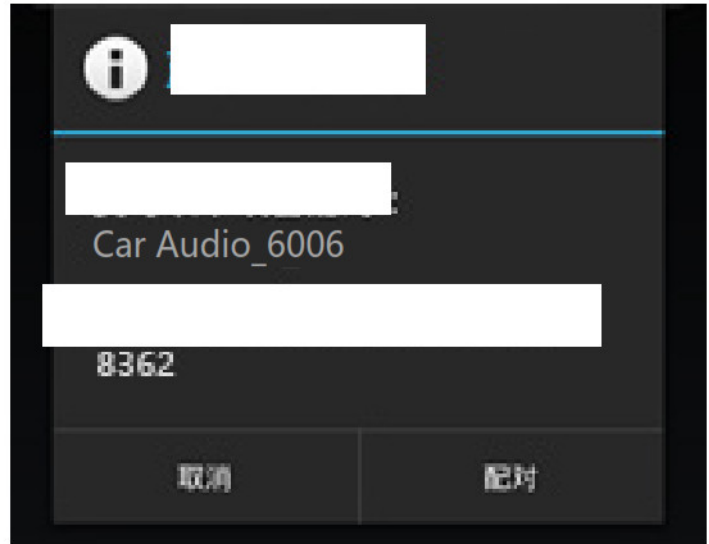
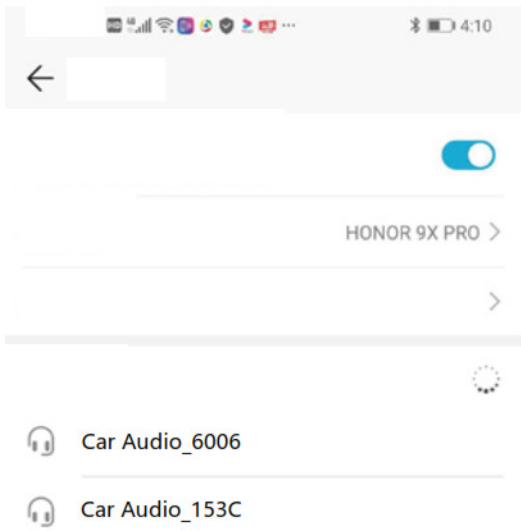
1. Long press the phone-ending button of the original car to switch to the CarPlay main system interface, find the Bluetooth function option and click to enter



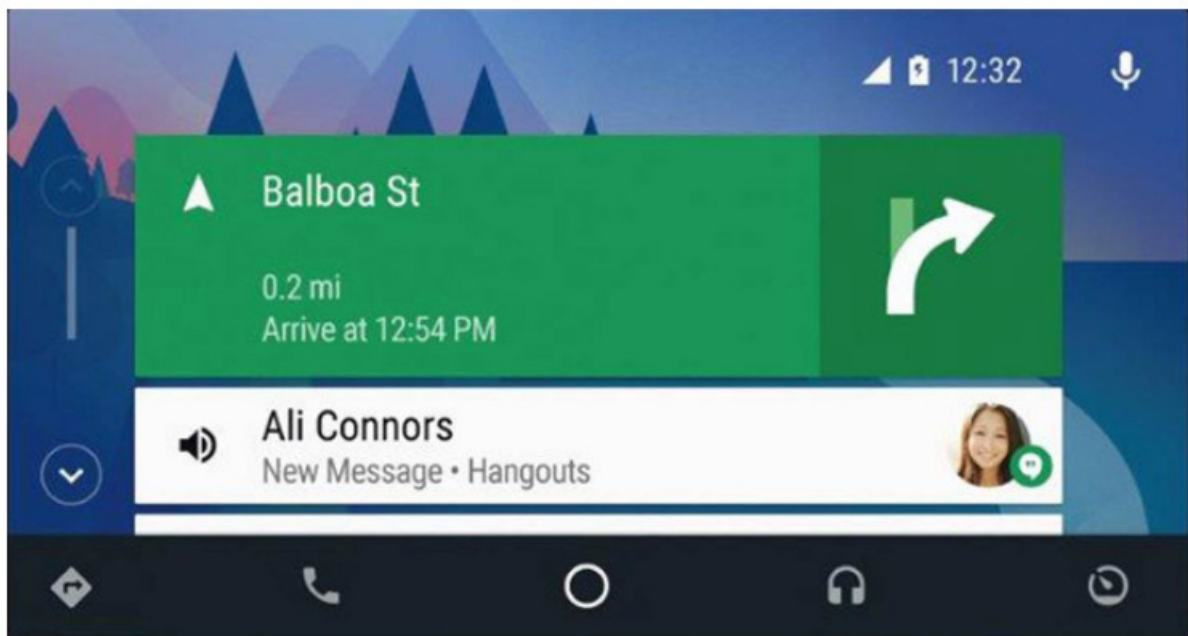
2. In the Bluetooth interface of CarPlay, you can view the Bluetooth name and pairing code of CarPlay; check Auto Connect, the next time you get in the car, the Bluetooth of the phone will automatically connect



3. Turn on the phone WiFi and keep it turned on, then enter the phone Bluetooth interface, click and connect CarPlay Bluetooth

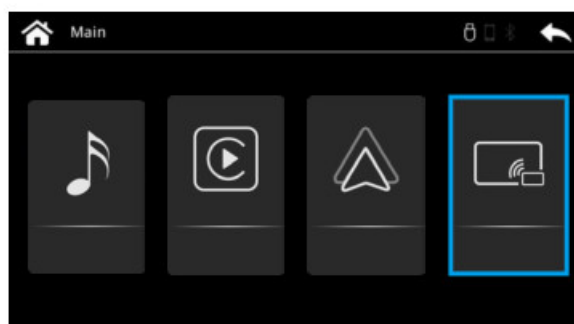


4. Click on the Bluetooth name beginning with the link “Car Audio-“, a pairing request will pop up, just click on pairing;

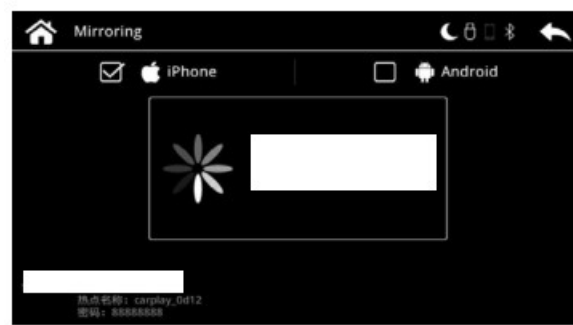


5. After the Bluetooth connection is successful, it will automatically connect to Android Auto. After entering the Android auto page, the system supports the original car touch or knob and other corresponding buttons to seamlessly operate the Android auto page APP

iPhone Wireless Mirroring



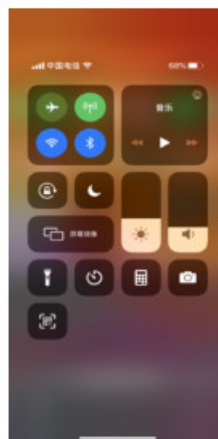
1. Long press the phone-ending button of the original car to switch to the CarPlay main system interface, find the Mirroring function option and click to enter



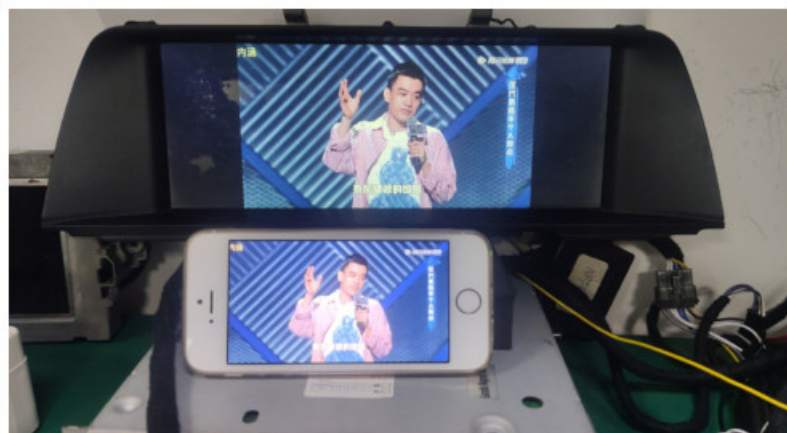
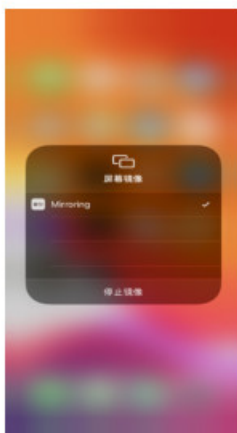
2. Select iPhone option in Mirroring function



3. Take out the iPhone, find the “Wireless LAN” function option and enter; open the “Wireless LAN” function option, then the carplay-wifi name will appear in the search bar and click on this wifi, the password is 88888888



4. After the carplay wifi connection is successful, the phone returns to the main interface, opens the shortcut menu bar, selects “Screen mirroring” and opens

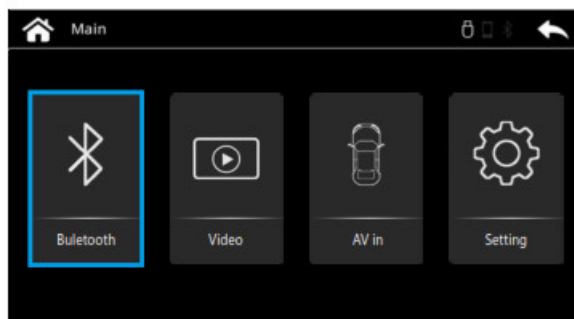


5. After the mobile phone “Screen mirroring” is turned on, select “Mirroring” to complete the wireless projection

Android Wireless Mirroring



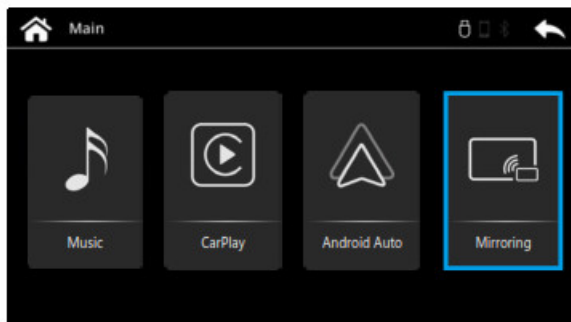
1. To use Android wireless mirroring, you need to download a “MLink” software first, and you can obtain the “Android wireless APK software” from the dealer



2. Long press the phone-ending button of the original car to switch to the CarPlay main system interface, find the Bluetooth function option and click to enter
3. Check the Bluetooth name on the “Bluetooth” system interface



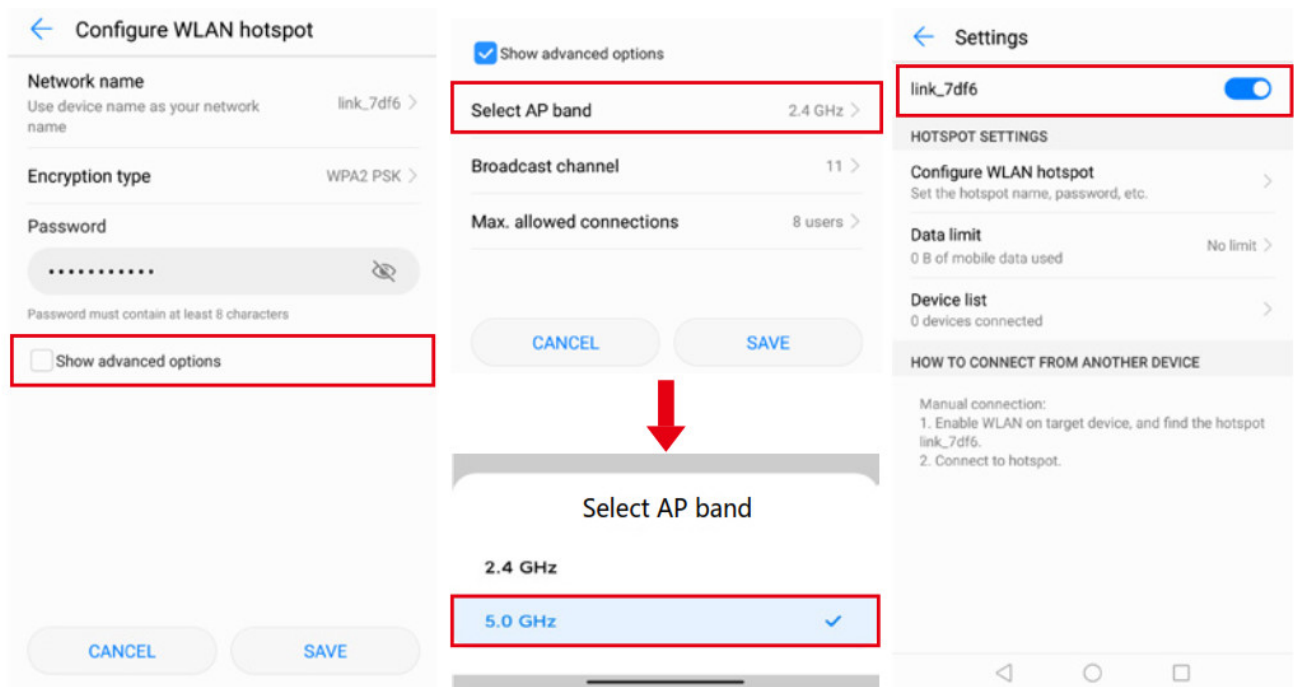
4. Take out the Android phone, find the “Bluetooth” function option, and find the name starting with “Limcet-Box-” in the Bluetooth search bar, click connectclick the link “Limcet-Box-” starting with the Bluetooth name, a pairing request will pop up, click pairing



5. Long press the phone-ending button of the original car to switch to the CarPlay main system interface, find the Mirroring function option and click to enter
6. Select the “Mirroring” function option and adjust it to “Android” to prompt the phone to establish a mobile hotspot for communication. The hotspot name and password are displayed in the lower left corner of the connection interface

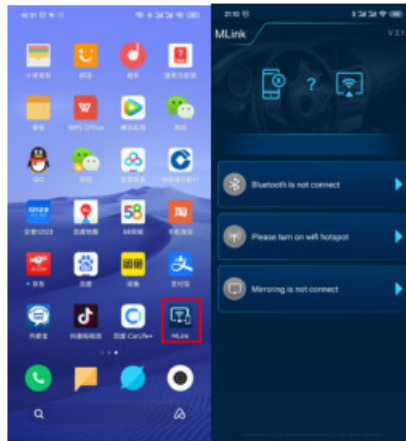


7. Enter the phone settings function and find “Personal Hotspot”;



8. Set the name and password of “Personal Hotspot” to be consistent with the name and password prompted on the “Mirroring” interface.

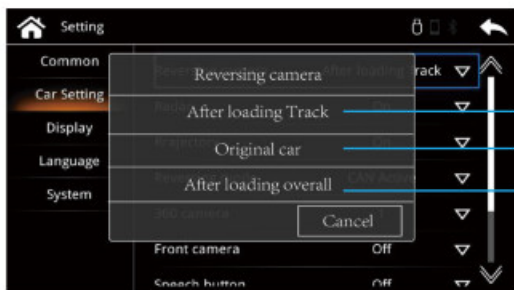
Select “5.0 GHz Band” for the hotspot AP band; (If there is no such option, check the “Show advanced options” first) Then save the setting and turn on the “Personal Hotspot” switch



9. Return to the main interface of the phone and open “MLink” to use wireless mirroring

Camera settings

CarPlay System - Setting - Car Setting - Reversing cammera



Please select this if you install a camera

Please select this if the original car with a camera

Please select this if you install 360 camera

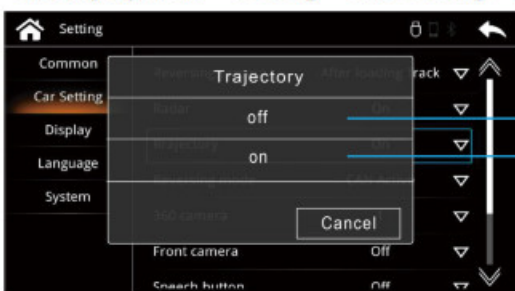
CarPlay System - Setting - Car Setting- Radar



The radar is not displayed on the interface of the camera select this option

The radar is displayed on the interface of the camera select this option

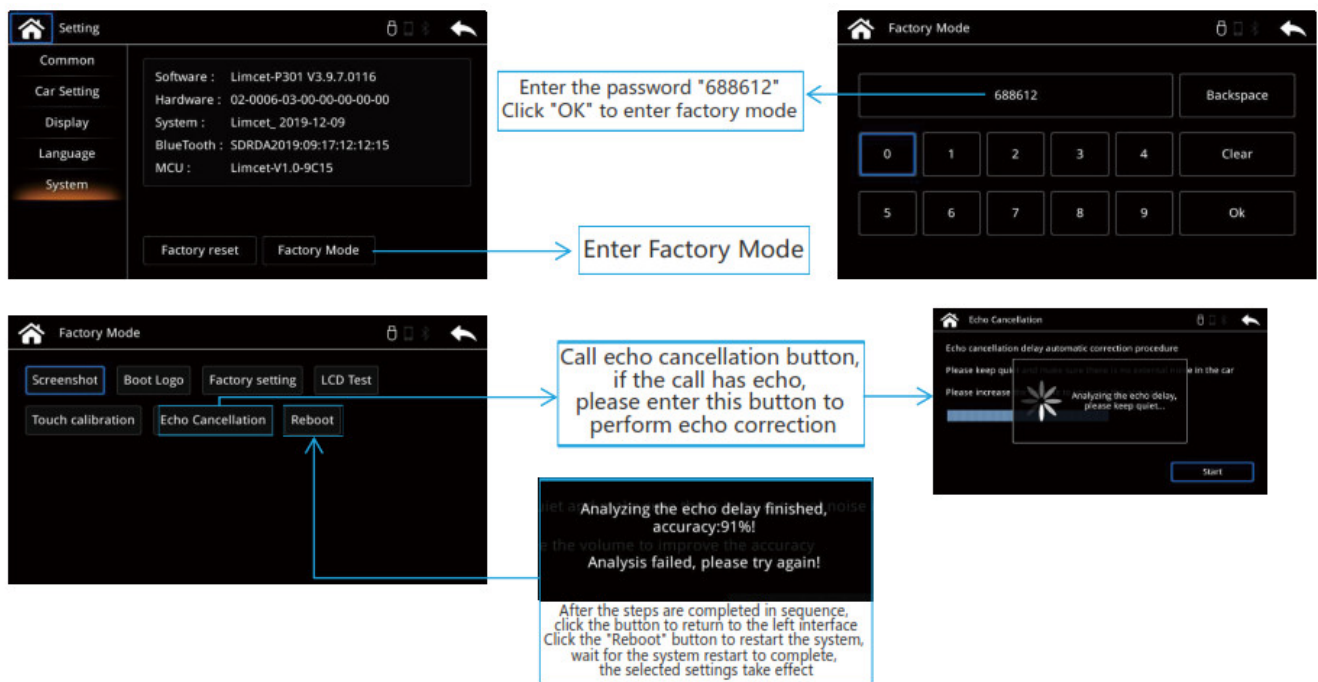
CarPlay System - Setting - Car Setting - Trajectory



If the camera interface does not display dynamic track, select this option

If the camera interface display dynamic track, select this option

Echo cancellation

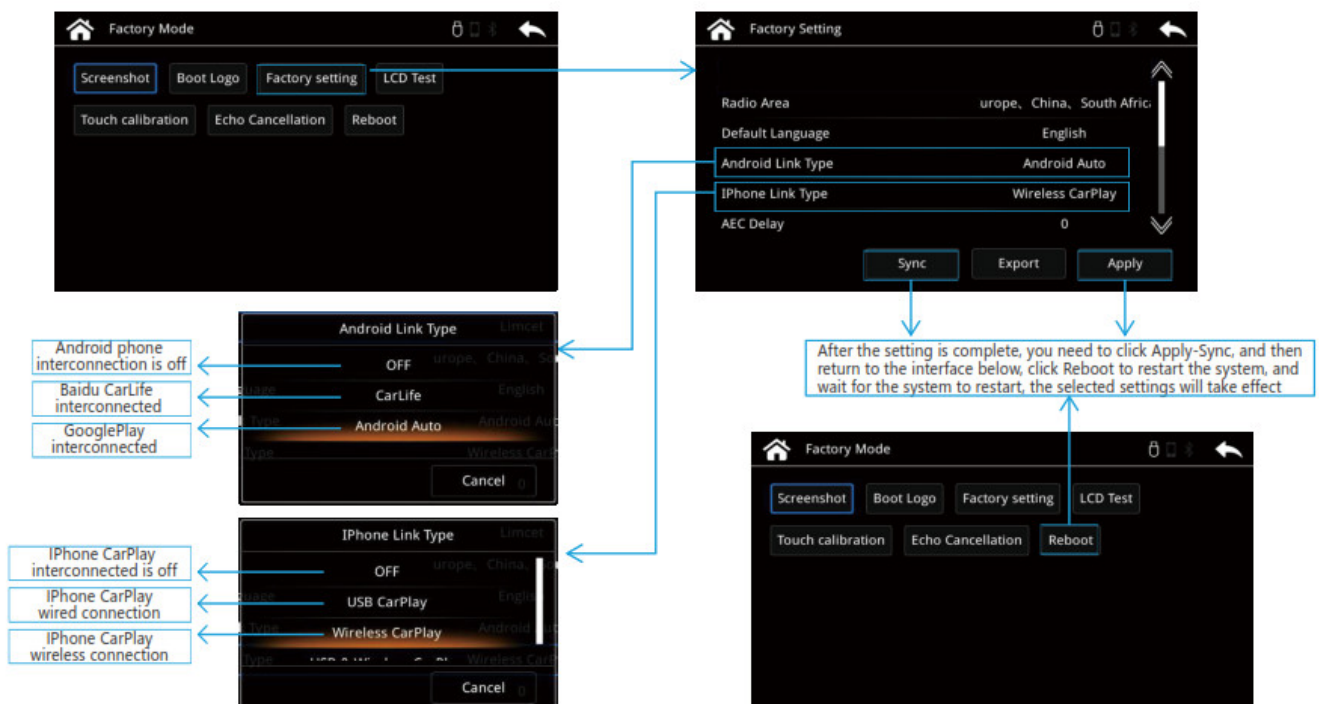


When correcting the echo, you must keep:

1. The environment in the car is quiet;
2. The sound channel must be set to the AUX channel that the system can recognize;
3. Turn the volume to a moderate position, then click "Start" to start echo correction,
The larger the final correction value, the better, as shown on the left

iPhone / Android Phone Setting

CarPlay System – Setting – System – Factory mode – Factory setting



FCC Caution.

§ 15.19 Labelling requirements.

This device complies with part 15 of the FCC Rules. Operation is subject to the following two conditions: (1) This device may not cause harmful interference, and (2) this device must accept any interference received, including interference that may cause undesired operation.

§ 15.21 Information to user.

Any Changes or modifications not expressly approved by the party responsible for compliance could void the user's authority to operate the equipment.

§ 15.105 Information to the user.


Note: This equipment has been tested and found to comply with the limits for a Class B digital device, pursuant to part 15 of the FCC Rules. These limits are designed to provide reasonable protection against harmful interference in a residential installation. This equipment generates uses and can radiate radio frequency energy and, if not installed and used in accordance with the instructions, may cause harmful interference to radio communications. However, there is no guarantee that interference will not occur in a particular installation. If this equipment does cause harmful interference to radio or television reception, which can be determined by turning the equipment off and on, the user is encouraged to try to correct the interference by one or more of the following measures:

- Reorient or relocate the receiving antenna.
- Increase the separation between the equipment and receiver.
- Connect the equipment into an outlet on a circuit different from that to which the receiver is connected.
- Consult the dealer or an experienced radio/TV technician for help.

RF warning for Mobile device: This equipment complies with FCC radiation exposure limits set forth for an uncontrolled environment. This equipment should be installed and operated with minimum distance 20cm between the radiator & your body.

Kremersino technology ltd
Web <https://kremersino.com>
Email sales@kremersino.com
Whatsapp +86 134 2516 3678
Telegram: @MichaelKremersino

Documents / Resources

	<p>KREMER sino kSmart Auto Wireless CarPlay and Android Auto Smart Module [pdf] User Manual</p> <p>IMI-1000, IMI1000, 2A822-IMI-1000, 2A822IMI1000, kSmart Auto Wireless CarPlay and Android Auto Smart Module, kSmart Auto, Wireless CarPlay and Android Auto Smart Module</p>
---	---