



# Kreg PRS1000 Corner Routing Guide Set Owner's Manual

[Home](#) » [Kreg](#) » Kreg PRS1000 Corner Routing Guide Set Owner's Manual 



## PRS1000 Corner Routing Guide Set Owner's Manual

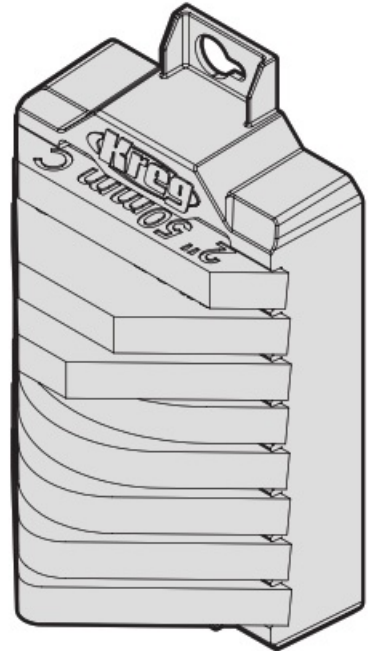
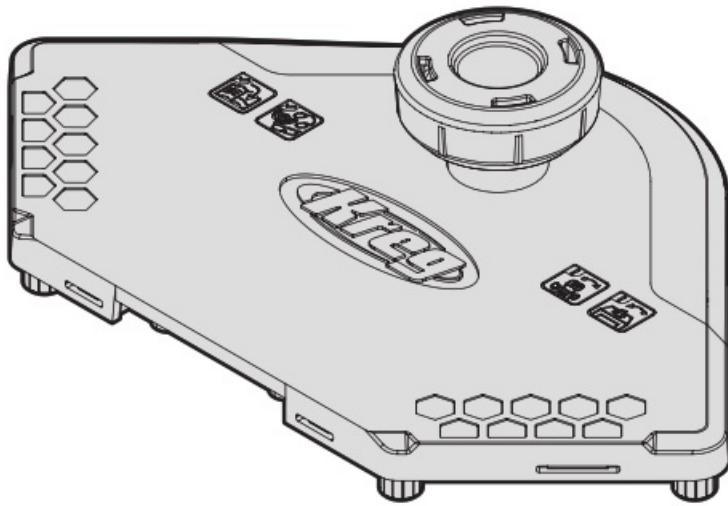
### Contents

- [1 PRS1000 Corner Routing Guide Set](#)
- [2 Safety Precautions](#)
- [3 Pre-Assembly](#)
- [4 Assembly](#)
- [5 Operation](#)
- [6 Care and Cleaning](#)
- [7 Troubleshooting](#)
- [8 Accessories](#)
- [9 Documents / Resources](#)
  - [9.1 References](#)
- [10 Related Posts](#)

## PRS1000 Corner Routing Guide Set

### Corner Routing Guide Set

Manual applies to Item # PRS1000 and PRS1000-INT



**WARNING** Every user must read and follow instructions and safety precautions in this manual. Failure to do so could result in serious injury. Save manual for future reference.

**We're here to help.**

We want you to have an exceptional project building experience.

If you have questions or need support, please get in touch.

1-800-447-8638 | [technicalsupport@kregtool.com](mailto:technicalsupport@kregtool.com)

**Tell us about your experience.**

Your opinion counts. And we're always looking for ways to improve.

Share your feedback so we can keep growing and innovating for you.

[www.kregtool.com/feedback](http://www.kregtool.com/feedback)

## Safety Precautions

**WARNING** Before using a power tool with this product, read and follow the tool manufacturer's instructions and safety precautions to reduce risk of serious injury from hazards such as fire, electric shock, or cutting blades.

- Dress properly. Do not wear loose clothing or jewelry. Keep hair, clothing, and gloves away from moving parts. Failure to do so can result in clothing, hair, or jewelry becoming caught in moving parts and serious injury.
- Always wear certified personal protective equipment such as safety glasses, hearing protection, and respiratory protection. When using a power tool, always follow the manufacturer's personal protection equipment requirements.
- Do not allow familiarity gained from frequent use of your tools to replace safe work practices. A moment of carelessness is sufficient to cause serious injury.
- Avoid awkward hand positions where a slip could cause contact with the cutting blade.
- This product is only intended for use with routers. Not intended for use with other power tools such as saws or drills.
- Always secure the workstation to prevent movement while routing.
- Always keep hands clear of the path of the cutting blade while cutting. Failure to do so can result in serious injury.
- Do not attempt bevel cuts with this product.

**WARNING** Do not operate this tool or any machinery while under the influence of drugs, alcohol, or medications.

**WARNING** This product can expose you to chemicals including Acrylonitrile, which is known to the State of California to cause cancer. For more information go to [www.P65Warnings.ca.gov](http://www.P65Warnings.ca.gov).

**WARNING** Drilling, sawing, sanding or machining wood products can expose you to wood dust, a substance known to the State of California to cause cancer. Avoid inhaling wood dust or use a dust mask or other safeguards for personal protection. For more information go to [www.P65Warnings.ca.gov/wood](http://www.P65Warnings.ca.gov/wood).

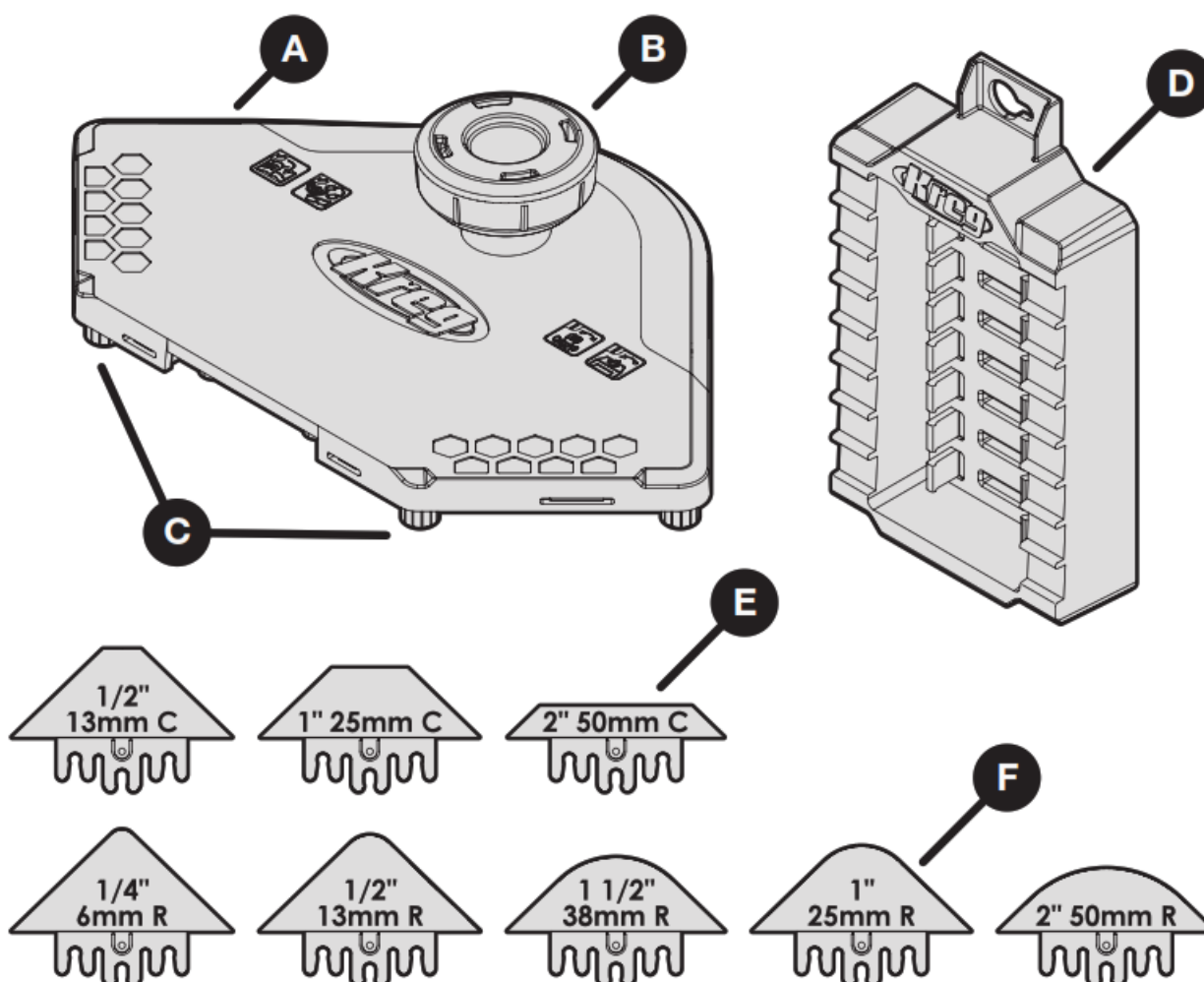
**WARNING** Avoid routing irregular-shaped workpieces that can twist, rock, or slip while being cut.

## Pre-Assembly

Kreg strongly recommends the use of Kreg Flush-Trim Bit – 1/4" Shank (PRS250), or the Kreg Flush-Trim Bit – 1/2" Shank (PRS500) with this product. See Kreg distributors or [kregtool.com](http://kregtool.com) for purchase. Have your trim router, router, or router table nearby and follow the bit installation to that power tool. This information can be found in the owner's manual for the power tool.

Review this section before you begin. Ensure you have all tools/materials that were in the package on hand and compare them with the items listed in the Hardware Included and Product Description sections. If any item is missing, do not use this product. Contact customer experience or return the product to the place of purchase.

## Product Description



Part	Description	Qty.
A	Base plate	1
B	Handle (pre-installed)	1
C	Edge stop posts (pre-installed)	4
D	Profile case	1
E	Chamfer profile templates	3
F	Radius profile templates	5

### Recommended Tools (Not Included)

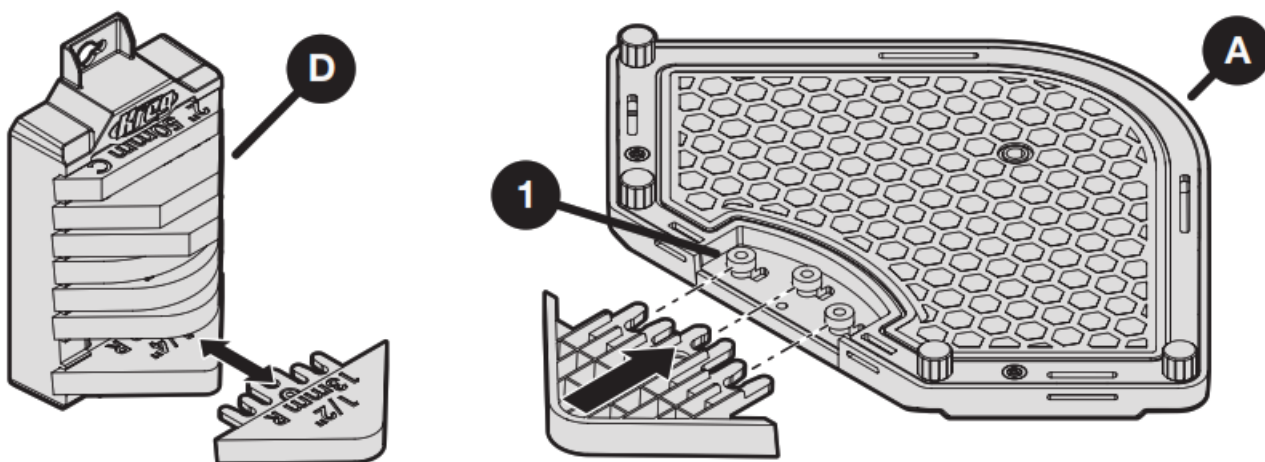
- Kreg Flush-Trim Bit – 1/4" Shank (PRS250) with dual bearings for trim routers that can handle up to 1½" of material
- Kreg Flush-Trim Bit – 1/2" Shank (PRS500) with dual bearings for full-sized routers and router tables that can handle up to 2" of material
- Kreg Precision Router Table System (PRS1045)
- Kreg Precision Benchtop Router Table (PRS2100)

### Assembly

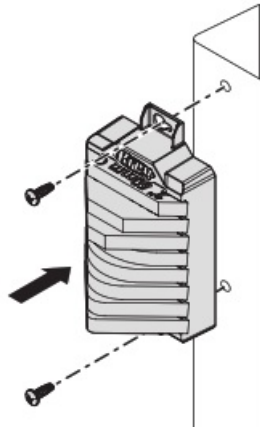
#### Profile Templates

There are two parts bags that contain the profile templates.

- To store the profile templates (E,F), snap the templates into the profile case (D).
- To use a profile template (E,F), snap the desired profile into the posts (1) on the underside of the Base Plate (A).



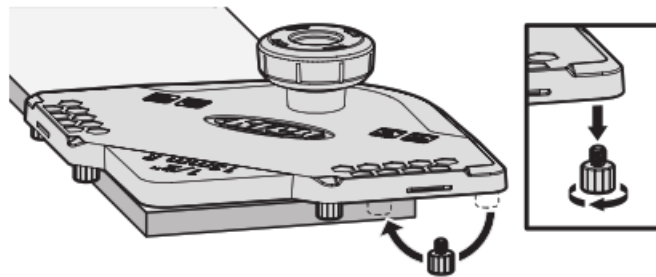
**Optional:** The profile case (D) may be installed for permanent placement on the Kreg Multi-Purpose Shop Stand (KRS1035), [part of the Kreg Precision Router Table System (PRS1045)]. The hole alignment on the shop stand legs mirrors the keyholes on the profile case (D). (Recommended hardware are two 10-24 machine screws with nuts. Not included.)



## Operation

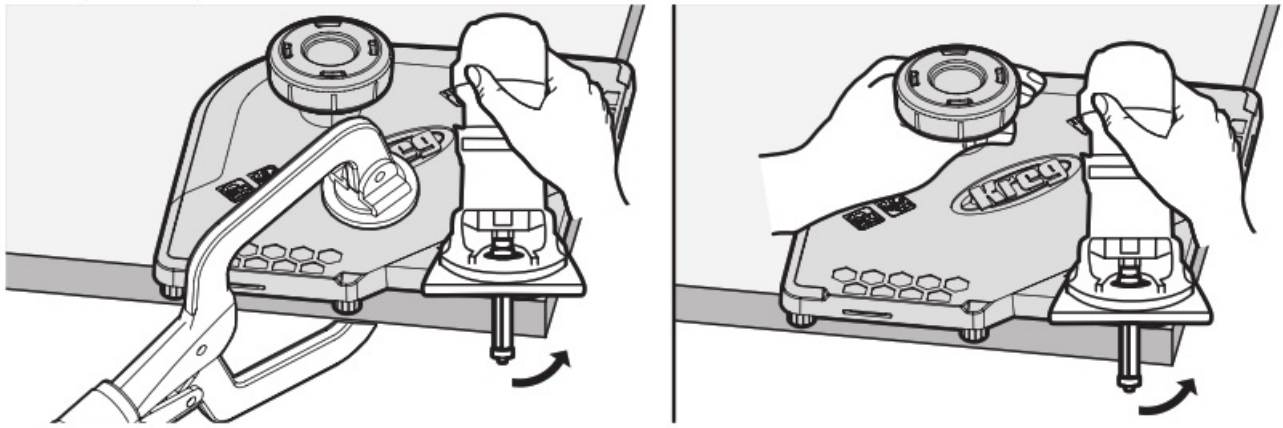
### 1. Adjust Edge Posts

- a. To accommodate for material width, position the edge stop posts (C) into the different threaded holes on the underside of the base plate (A). Material must be 3 1/2" wide or greater for use and material thickness should be a minimum of 1/2" thick.
- b. Adjust the edge stop posts (C) so that all four posts contact the material edge and tighten snugly by hand.



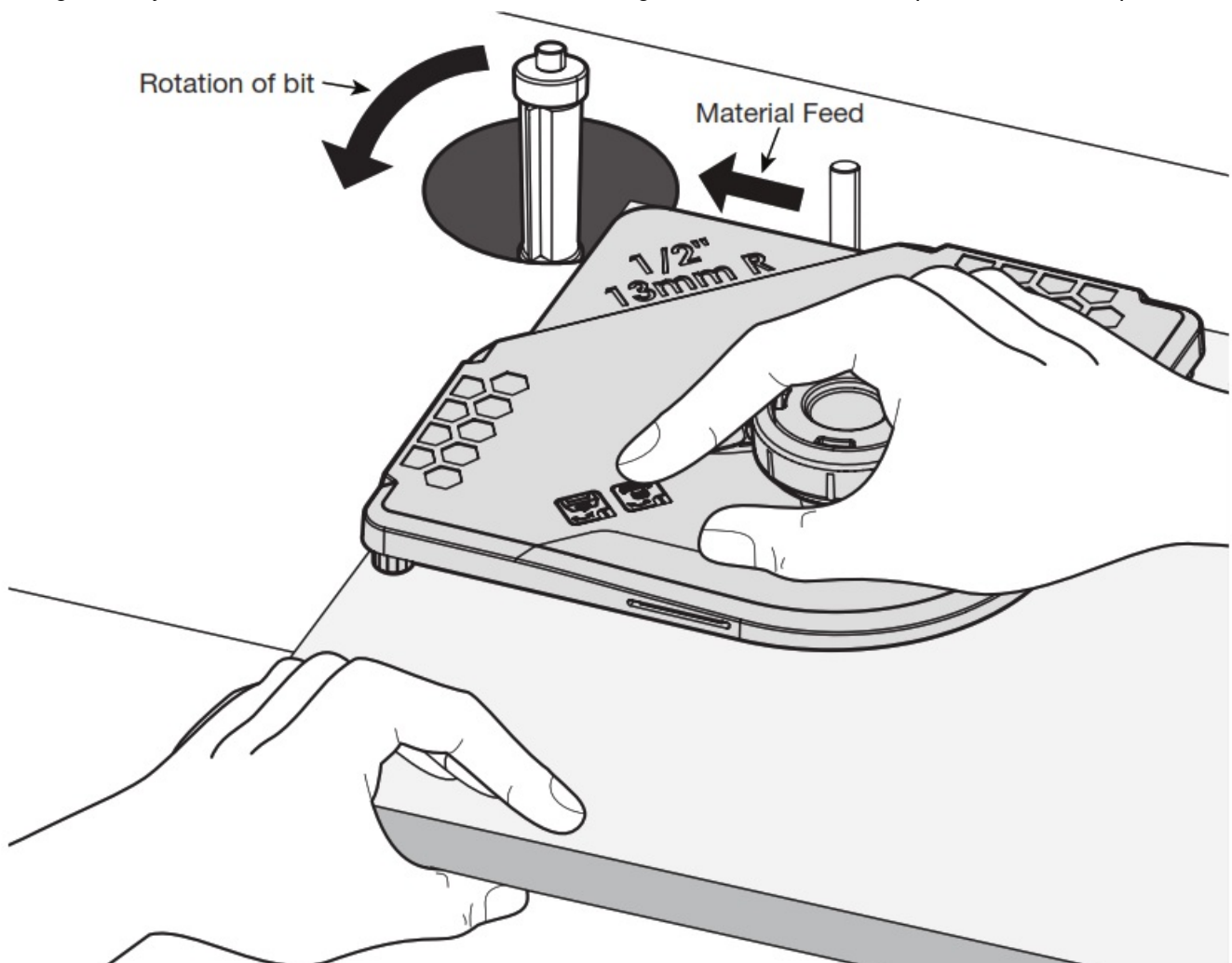
### 2. Trim Router or Full Sized Router

- a. Install the Kreg Flush-Trim Bit – 1/4" Shank (PRS250) into the router. (Refer to the power tool owner's manual for installation.)
- b. Adjust the router bit height to the thickness of your material. The bearing on the shank should be positioned so it rides against the base plate (A).
- c. Position the handle away from yourself and the edge facing toward you.
- d. Ensure that the base plate (A) is positioned securely to the material by clamping it in place or firmly applying enough down pressure on the handle.
- e. Place router so its base rests on top of the profile template. Be sure that the bit is not in contact with material before powering up the trim router. Run the trim router counterclockwise (left to right) along the material. For cuts larger than half of bit diameter (1/2"), make multiple passes, running the router from left to right, and taking off only a small amount of material. The bit bearing will not contact the template until the last pass.
- f. For full sized routers, follow the same steps but use the Kreg Flush-Trim Bit – 1/2" Shank (PRS500).



### 3. Router Table

- a. Install the Kreg Flush-Trim Bit – 1/2" Shank (PRS250). (Refer to the power tool owner's manual for installation.)
- b. Adjust the router bit height to the thickness of your material. The bearing at the end of the bit should be positioned so it rides against the base plate (A).
- c. Position the handle toward yourself and the edge you want trimmed toward the router bit.
- d. Ensure that the base plate (A) is positioned securely to the material by gripping the handle firmly and applying enough downward pressure.
- e. Be sure that the bit is not in contact with the material, then turn the router on and start with the material positioned at the starting pin on the table. Run the material counterclockwise (left to right) along the material. For cuts larger than half of bit diameter (3/4"), make multiple passes, running the router from left to right, and taking off only a small amount of material. The bit bearing will not contact the template until the last pass.





## Care and Cleaning

- Wipe the profile templates (E, F) and base plate (A) clean of any dust and debris.
- Clean the back base plate (A) with the GrippMaxx™ material with a damp cloth to keep it clean and clear of saw dust and debris.
- Keep the profile templates (E, F) in the profile case (D) to prevent loss.
- Clean the router bit of dust and debris after use.

## Troubleshooting

Problem	Solution
Experiencing Chip Out	Make multiple small passes to minimize the material removed.
	Bit may be dull and require replacement, see Kregtool.com for PRS250/
Experienced shifting or movement of baseplate	Clean the GrippMaxx™ material on the underside of the base plate.
	Make sure the edge stop posts all are aligning to the material edge.
	Clamp the baseplate in place to the material for hand router use.
Baseplate does not align to material edge	Ensure material thickness is at least 1/2" in thickness and 3.5" in width, and at

## Accessories



Kreg Flush-Trim Bit - 1/4" Shank (PRS250)



Kreg Flush-Trim Bit - 1/2" Shank (PRS500)



**EXPLORE. BUILD. SHARE.**

We're makers just like you.

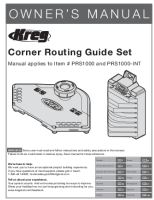
That's why we love to see what you're working on.

Share with the community and get inspired!

**#madewithKreg**

Get free plans, project resources, and  
more at [kregtool.com](http://kregtool.com)

## Documents / Resources



[Kreg PRS1000 Corner Routing Guide Set](#) [pdf] Owner's Manual  
PRS1000 Corner Routing Guide Set, PRS1000, Corner Routing Guide Set, Routing Guide Set, Guide Set

## References

- [Kegtool.com](https://www.kegtool.com/)
- [Welcome to Kreg Tool](#)
- [Homepage | Optimale](#)
- [P65Warnings.ca.gov](https://www.p65warnings.ca.gov/)
- [P65Warnings.ca.gov/wood](https://www.p65warnings.ca.gov/wood)

Manuals+.