



kreatfunk Bell Alarm Clock with Turning Sensor Instruction Manual

[Home](#) » [KREAFUNK](#) » kreatfunk Bell Alarm Clock with Turning Sensor Instruction Manual 



Bell
Alarm clock with turning sensor
Operation manual

Contents

- [1 Bell Alarm Clock with Turning Sensor](#)
- [2 Overview](#)
- [3 Charging](#)
- [4 Battery status](#)
- [5 Set time](#)
- [6 Set alarm](#)
- [7 Snooze](#)
- [8 Alarm off](#)
- [9 Alarm on/off](#)
- [10 Display brightness](#)
- [11 Reset](#)
- [12 Technical specifications](#)
- [13 Documents / Resources](#)
 - [13.1 References](#)
- [14 Related Posts](#)

Bell Alarm Clock with Turning Sensor



This product is in compliance with the essential requirements and other relevant provisions of Directive 2014/53/EU.

The declaration of conformity may be consulted at: <https://Kreafunk.com/pages/declaration-of-conformity>

The ABS plastic in this stylish product is made from 100% recycled plastic.

Overview



Charging

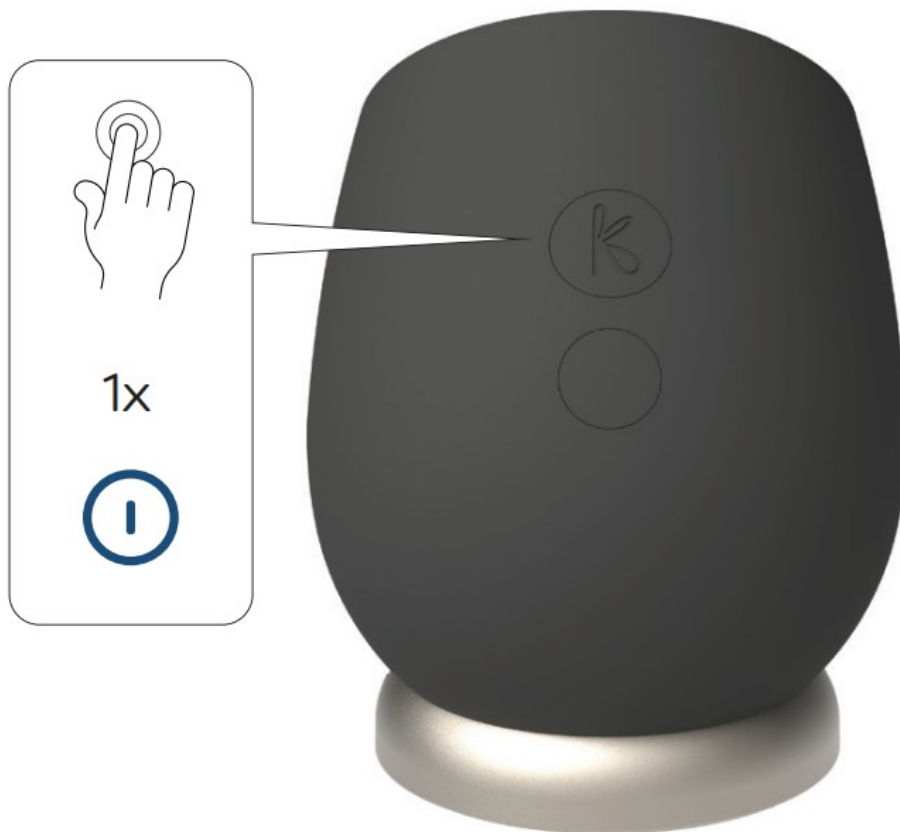
Charge your product to 100% before using it the first time.



Battery status



On/off



Switch time mode (12/24h)



Set time

Step 1



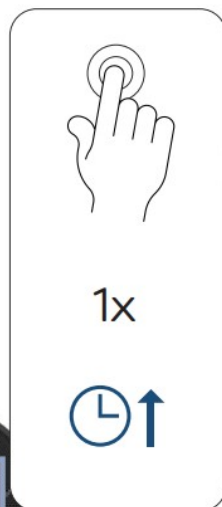
Step 2: set hour



Step 3



Step 4: set minutes



Step 5: confirm time



Set alarm

Step 1



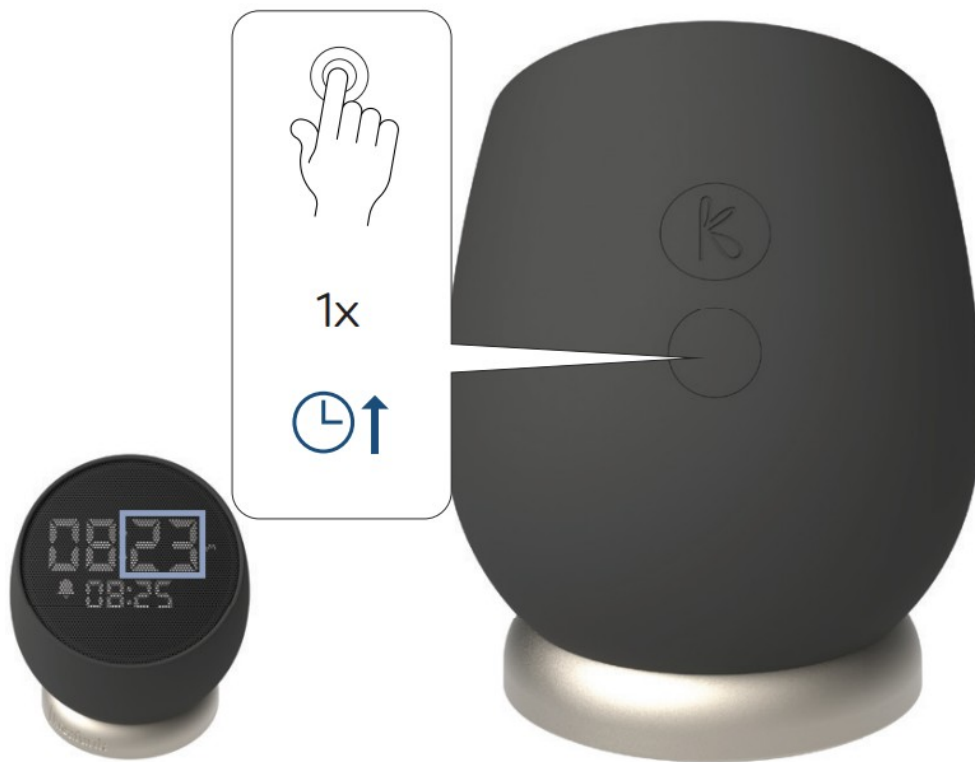
Step 2: set hour



Step 3



Step 4: set minutes



Step 5:



Step 6: choose sound (6 sounds to choose from)



Step 7:



Step 8: choose volume (0 to 100%)

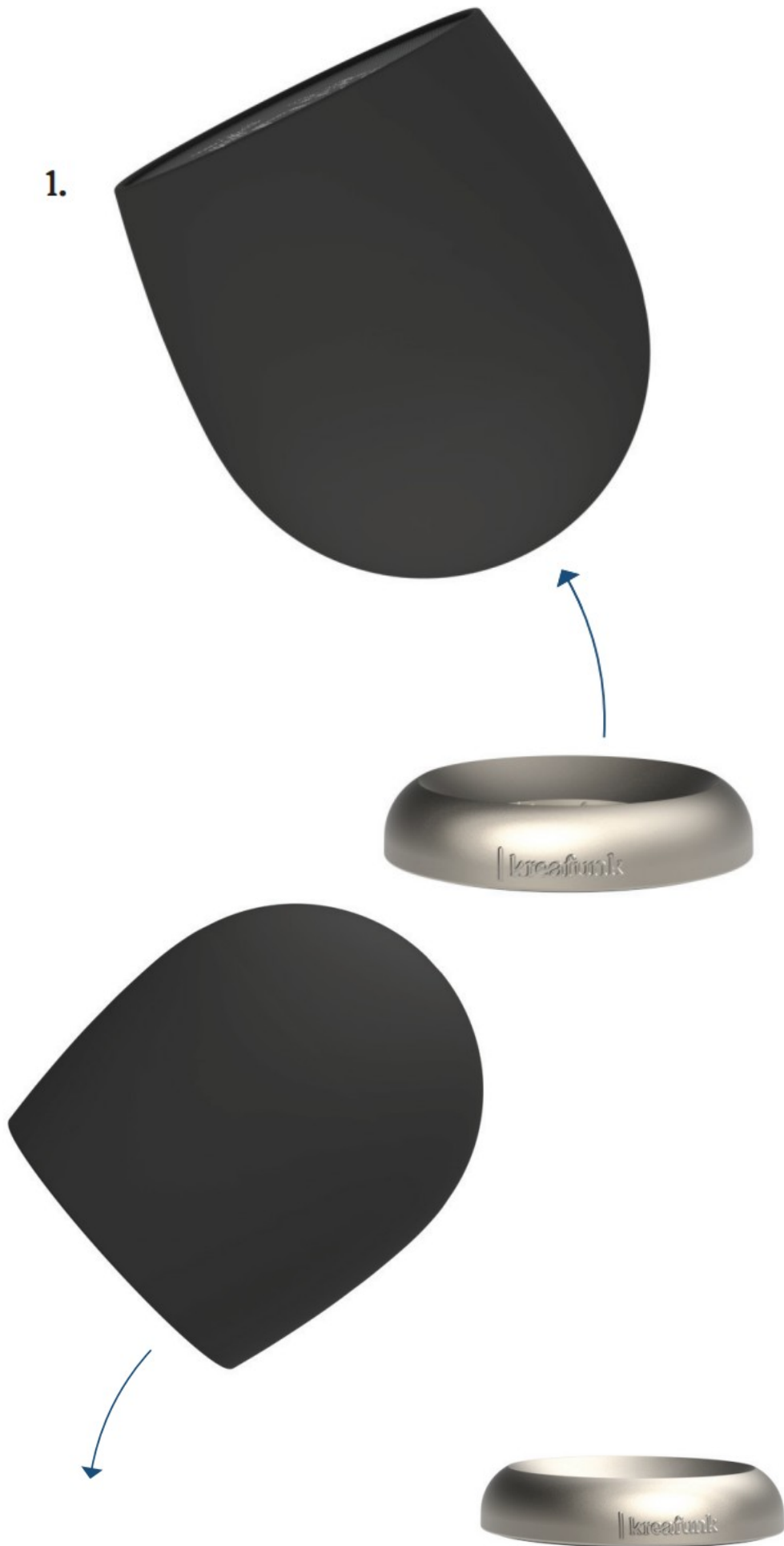


Step 9: set alarm



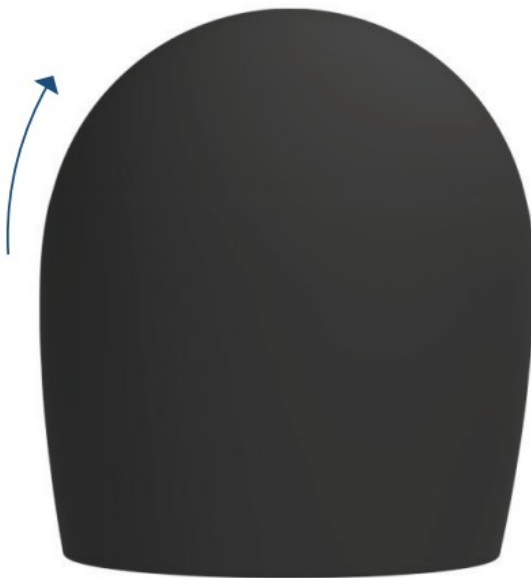
Snooze

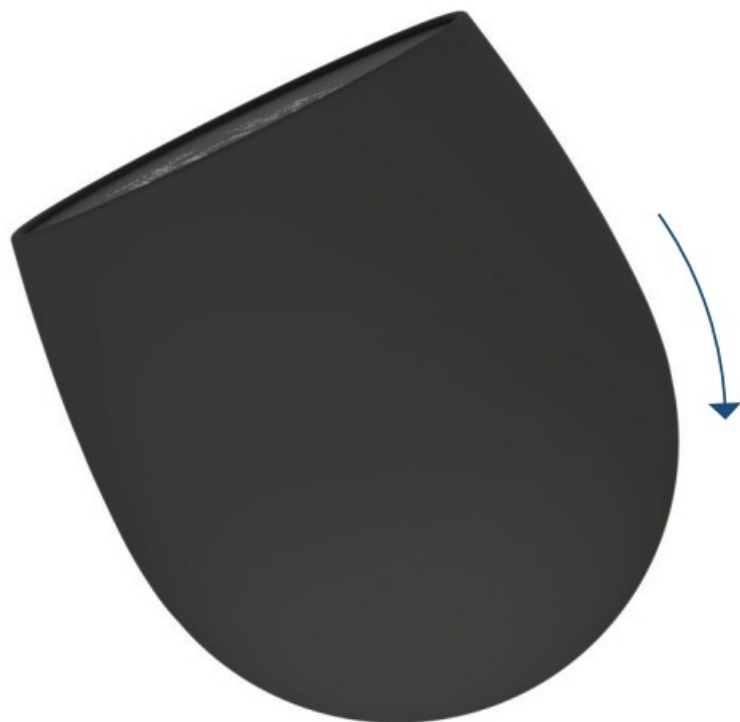
1.

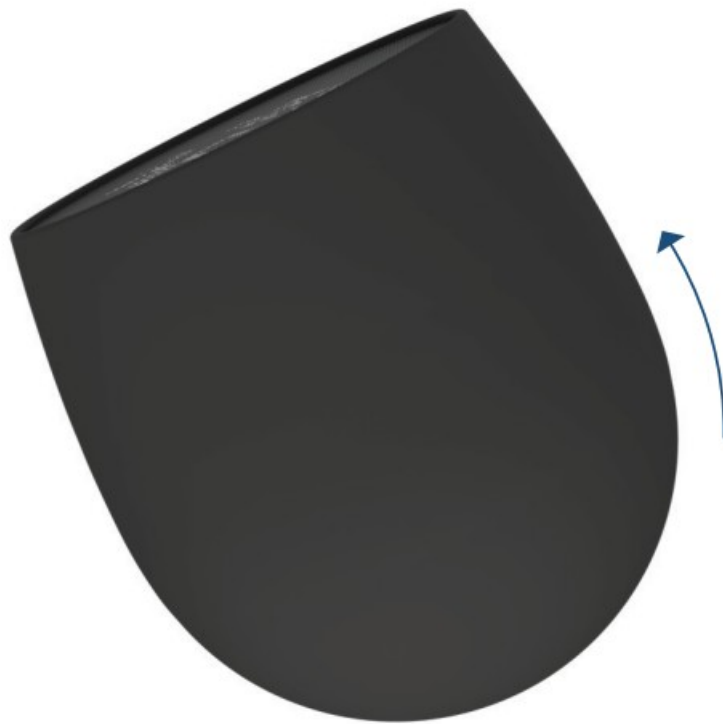




Alarm will start again after 5 minutes
2. after 5 minutes







Alarm will start again after 5 minutes

Alarm off

When alarm is ringing



Alarm will start again the day after

Alarm on/off

When alarm is not ringing



Alarm will not start again the day after if you turn off alarm

Alarm on



Alarm off



Display brightness



Step 1: 100%
Step 2: 70%
Step 3: 30%
Step 4: 15%*

*The display will turn off after 4 minutes and activate again when touching Bell or pressing K button.

Reset



Technical specifications

- 100% recycled GRS plastic
- Water-resistant (IPX4)
- Dimensions: 102x115mm (ØxH)
- Weight: 165g
- Operating time: up to 30 days
- Charging time: 1-2 hours
- Alarm clock
- Snooze by using flip sensor
- Dimmable LED display
- Rotatable in base
- Built-in Lithium battery with 3.7V, 600mAh
- USB-C cable included
- Input power: DC 5V / 1A

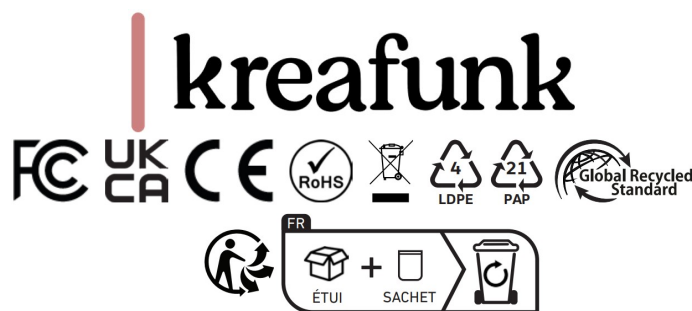
Safety and maintenance instructions

1. Please read this operation manual carefully before use.
2. The safety and maintenance instructions in this operation manual should be retained for future reference and must be followed at all times.
3. Keep the product away from heat sources such as radiators, heaters or other appliances that produce heat.
4. Place Bell in a stable position to avoid fall and cause damage or personal injury.
5. Do not expose the product to direct sunlight for longer periods. High temperatures may shorten the life of the

product, destroy the battery and distort certain plastic parts.

6. Do not expose the product to extreme cold as it may damage the internal circuit board.
7. Rechargeable batteries have a limited number of charge cycles. Battery life and number of charge cycles varies by use and settings.
8. Avoid liquids getting into the product.
9. Before wiping with a dry cloth to clean Bell, set the power switch to the off position and unplug the power cord from the power outlet.
10. Do not throw with or stamp on the product. This may damage the internal circuit board.
11. Do not try to disassemble the product. This must only be done by a professional.
12. Do not use concentrated chemical products or detergent to clean the product.
13. Keep the surface away from sharp things, as these may cause damage to the plastic parts.
14. Use 5V / 1A power supplies only. The connection of power supplies with higher voltage may lead to severe damage.
15. Do not arbitrarily discard or place the lithium battery near fire or intense heat in order to avoid a risk of explosion.

If you do experience any problems with your product please contact the retailer you purchased the product from. The retailer will provide you with guidance and if that does not solve the problem, the retailer will handle the claim directly with Kreafunk.



www.fsc.org

MIX

The mark of responsible forestry

FSC® A000519

Kreafunk ApS

Klamsagervej 35A, st.

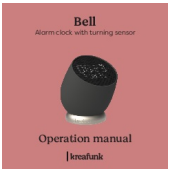
8230 Aabyhoej

Denmark

www.Kreafunk.com

info@Kreafunk.dk

+45 96 99 00 20



[kreafunk Bell Alarm Clock with Turning Sensor](#) [pdf] Instruction Manual
Bell, Bell Alarm Clock with Turning Sensor, Alarm Clock with Turning Sensor, Clock with Turning Sensor, Turning Sensor, Sensor

References

- [User Manual](#)