



KREAFUNK AWAKE Alarmclock with Bluetooth Speaker and Qi Charger User Manual

[Home](#) » [KREAFUNK](#) » KREAFUNK AWAKE Alarmclock with Bluetooth Speaker and Qi Charger User Manual 

Contents

- [1 KREAFUNK AWAKE Alarmclock with Bluetooth Speaker and Qi Charger](#)
- [2 OVERVIEW](#)
- [3 ON/OFF](#)
- [4 MANUAL BLUETOOTH PAIRING](#)
- [5 SET TIME](#)
- [6 WATCH ALARM](#)
- [7 SET ALARM](#)
- [8 DISPLAY BRIGHTNESS](#)
- [9 CHOOSE SLEEP SOUND](#)
- [10 CHANGE VOLUME](#)
- [11 TECHNICAL SPECIFICATIONS](#)
- [12 FCC STATEMENT](#)
- [13 SAFETY AND MAINTENANCE INSTRUCTIONS](#)
- [14 Documents / Resources](#)
- [15 Related Posts](#)

KREAFUNK

KREAFUNK AWAKE Alarmclock with Bluetooth Speaker and Qi Charger

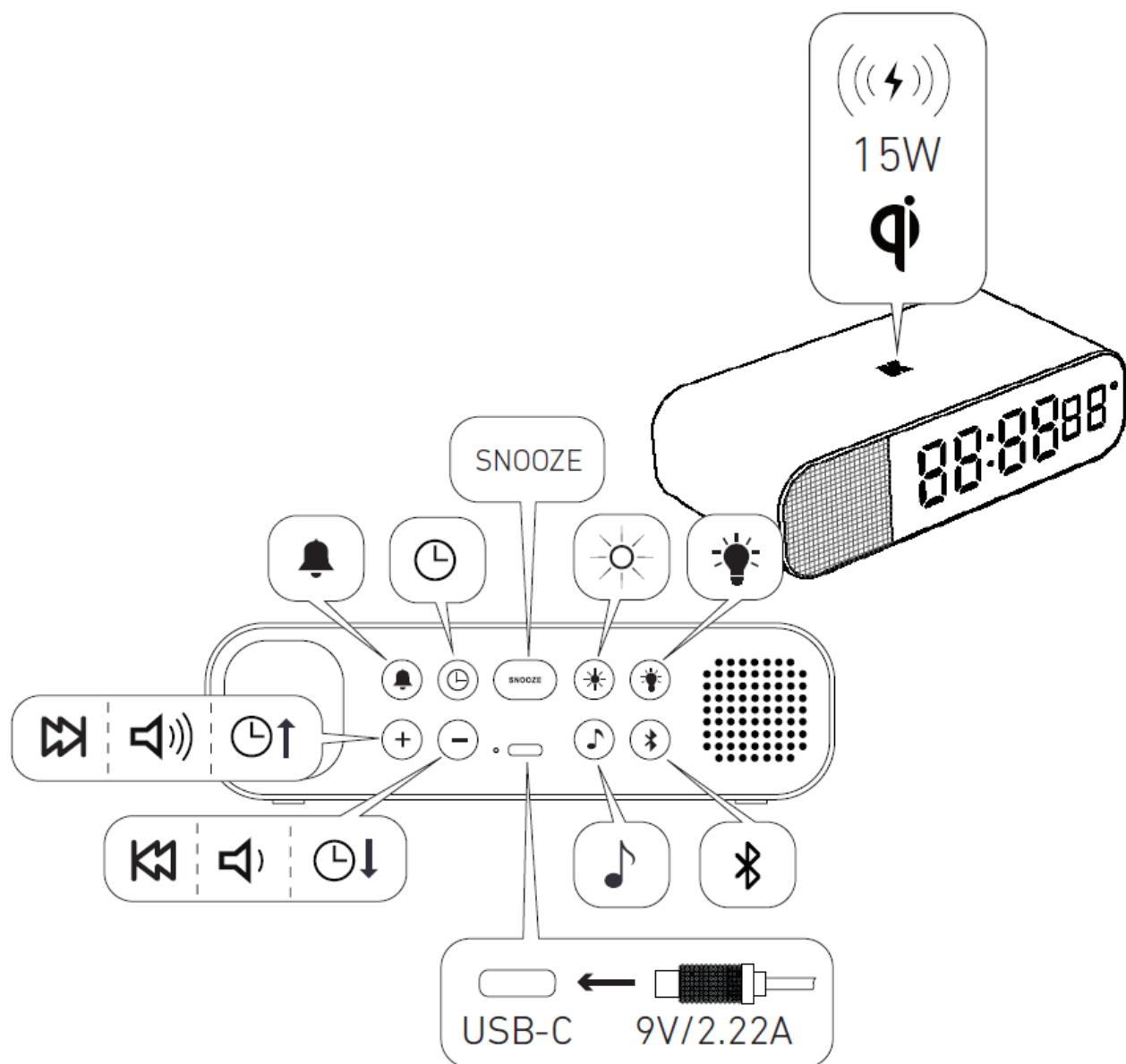


This product is in compliance with the essential requirements and other relevant provisions of Directive

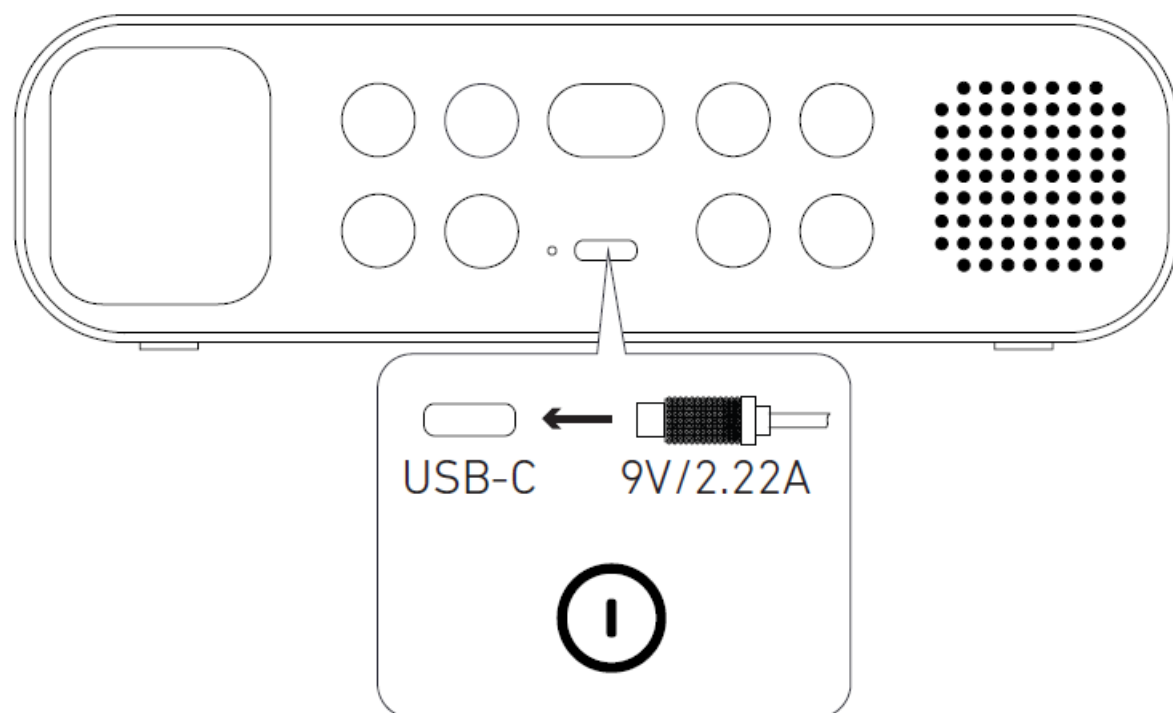
2014/53/EU.

The declaration of conformity may be consulted at: www.kreafunk.com/declaration-of-conformity/

OVERVIEW

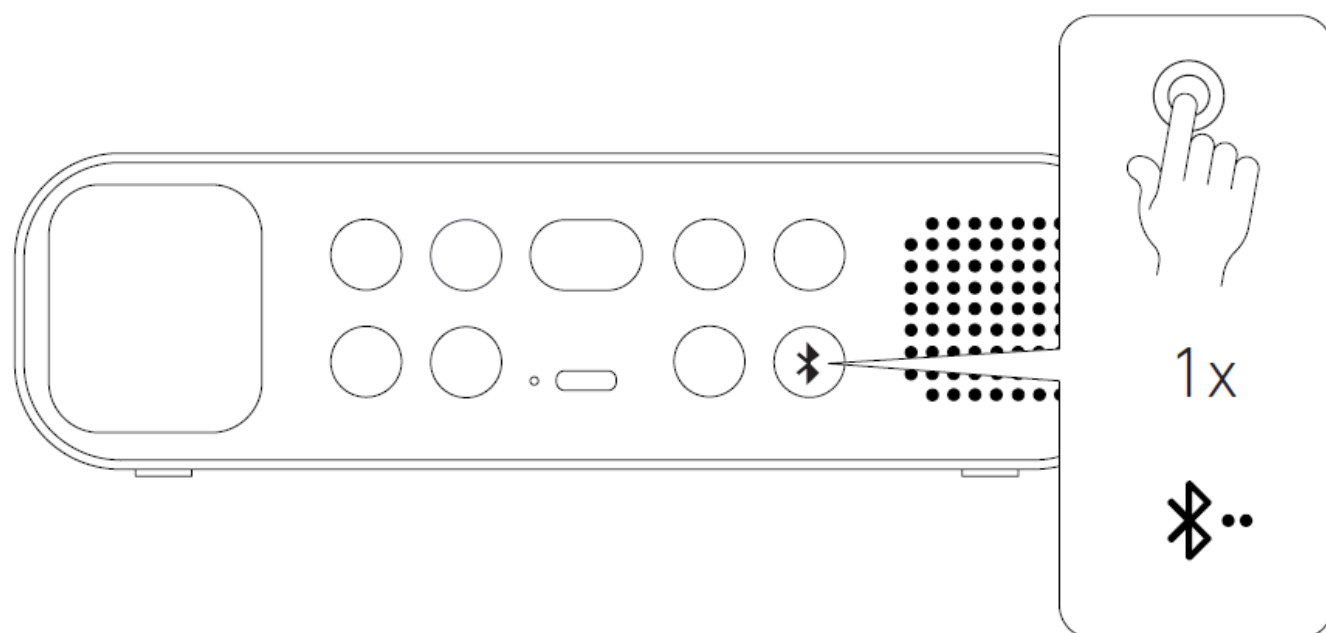


ON/OFF

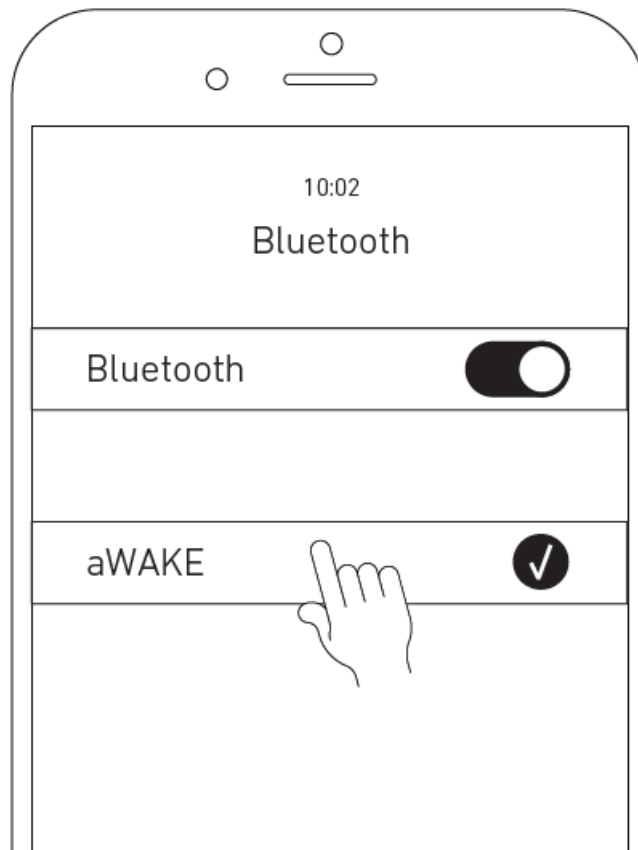


MANUAL BLUETOOTH PAIRING

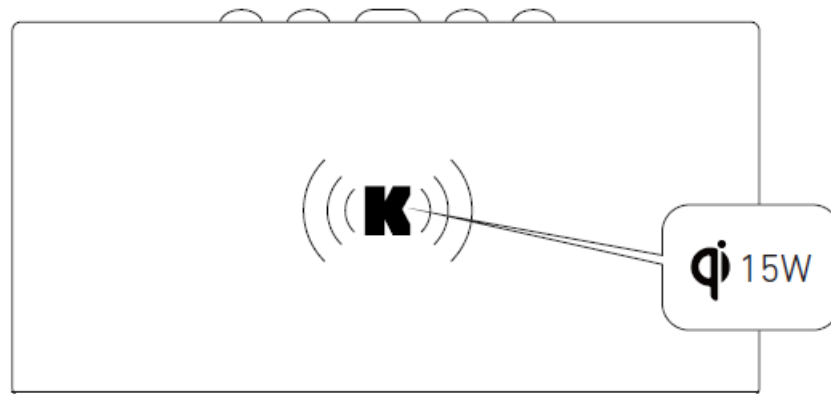
STEP 1



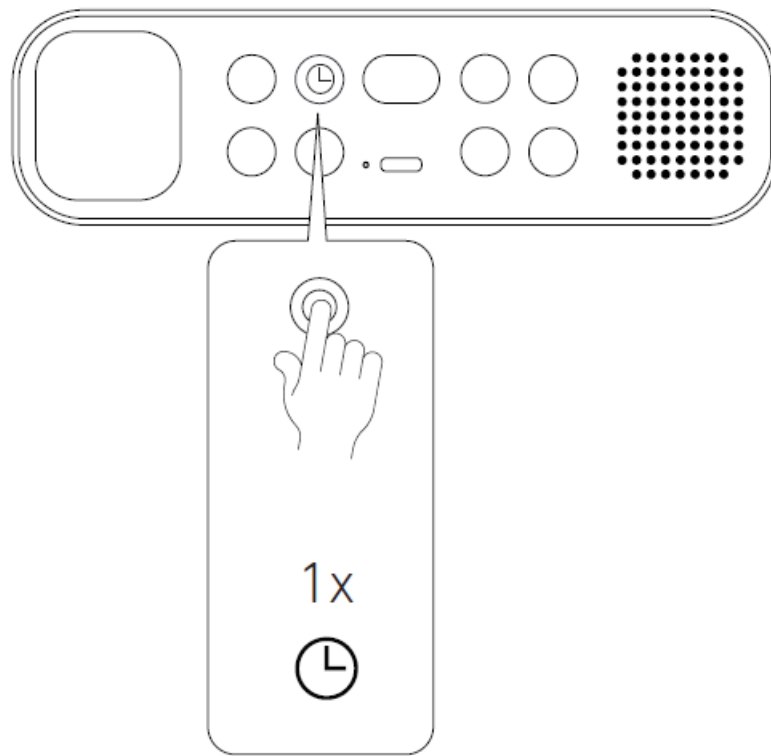
STEP 2



QI CHARGING

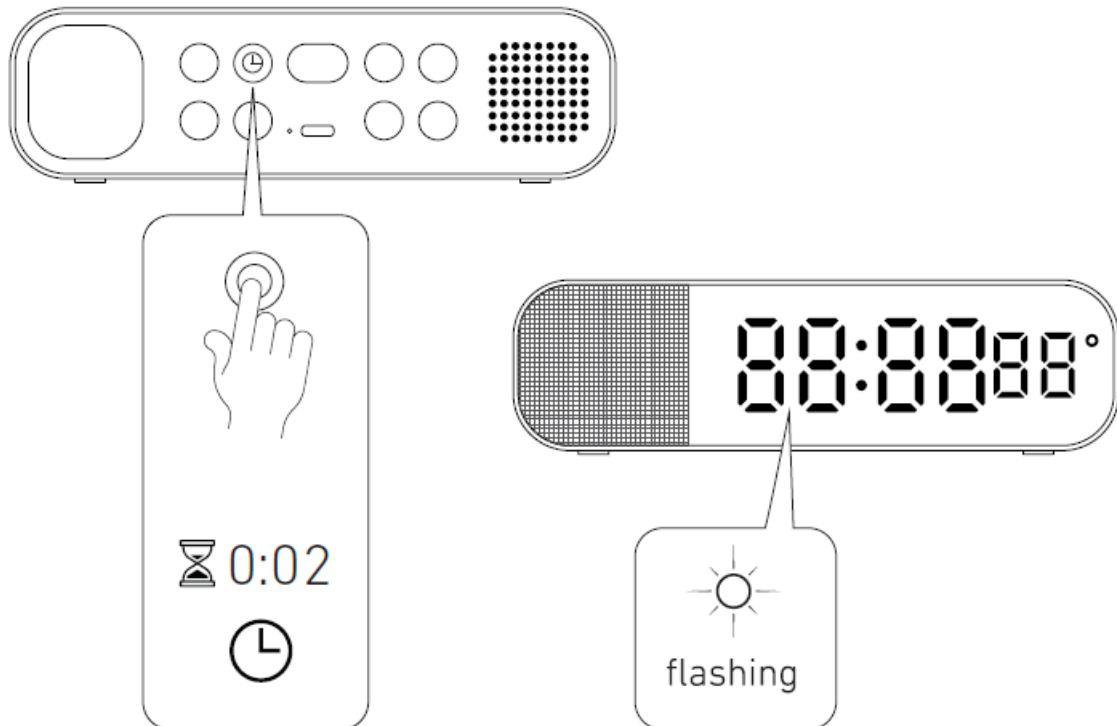


SWITCH TIME MODE (12/24H)



SET TIME

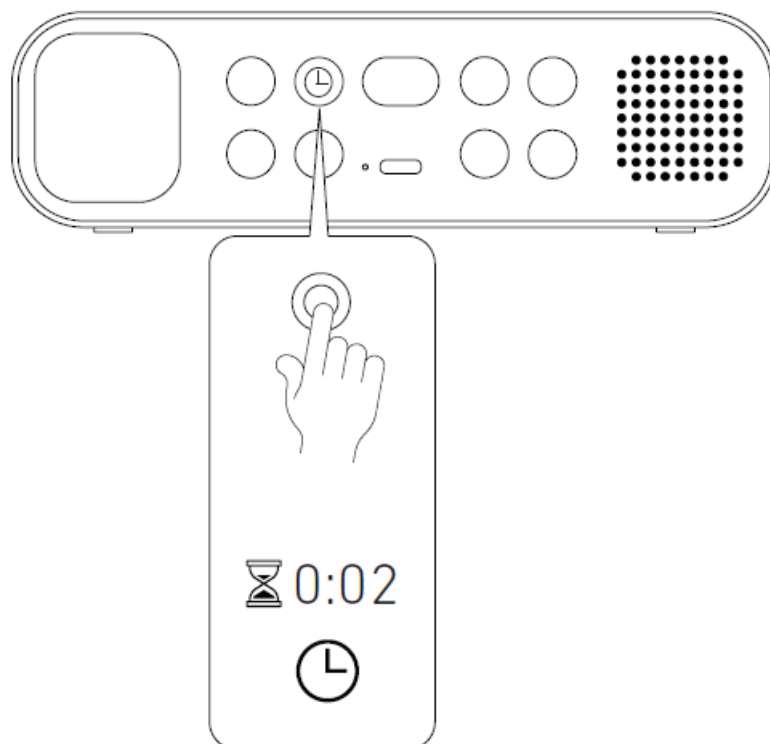
STEP 1



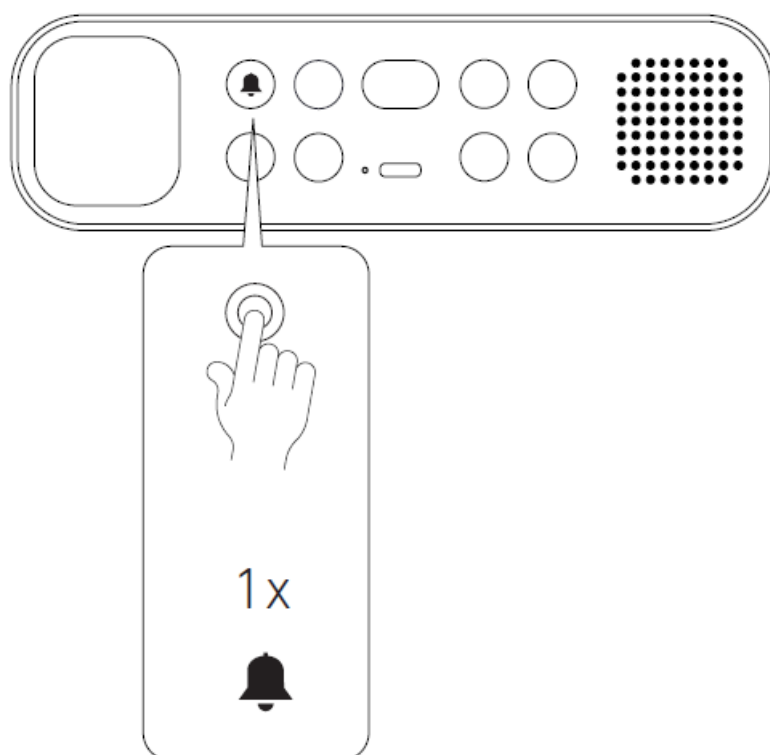
NOTE: QUIT BLUETOOTH AND SLEEP SOUND MODE

STEP 2: SET HOUR

STEP 5: TIME SET

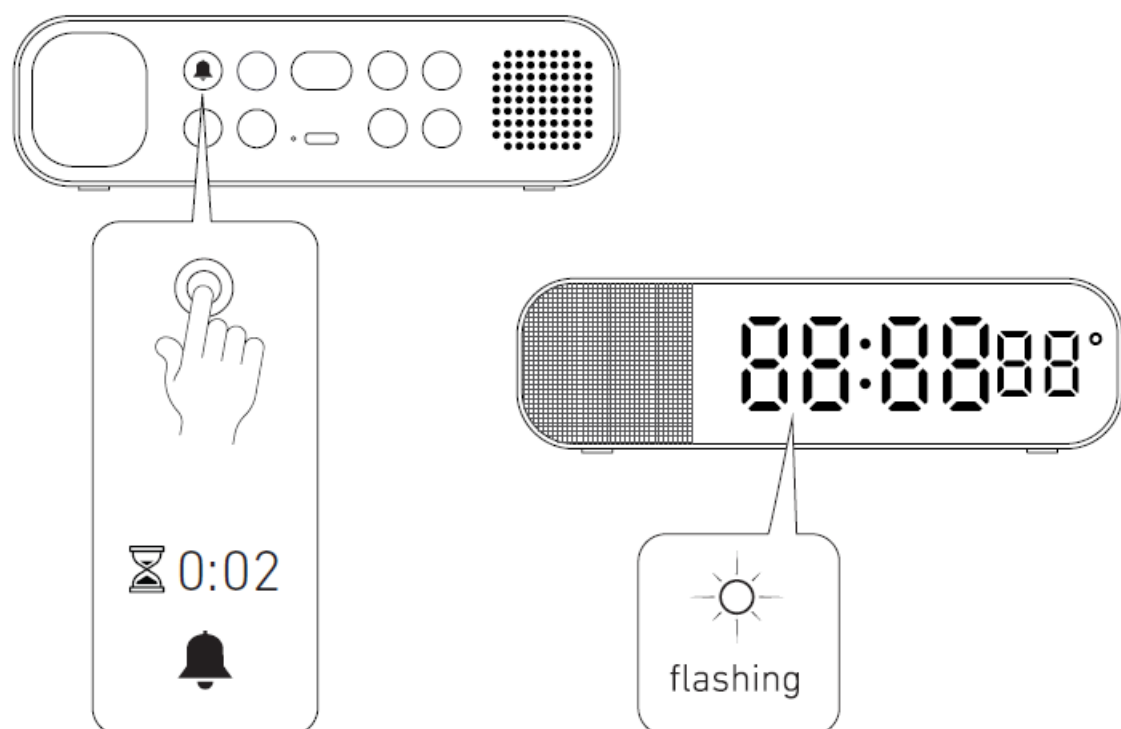


WATCH ALARM



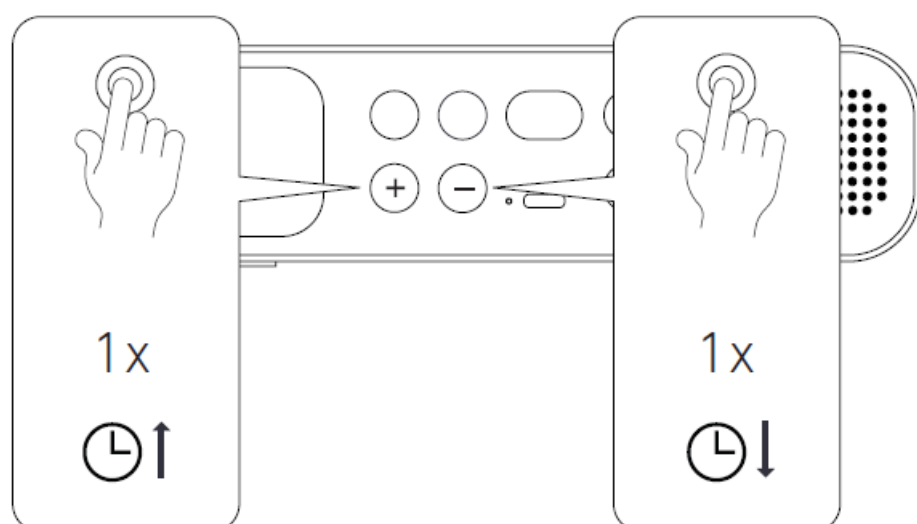
SET ALARM

STEP 1

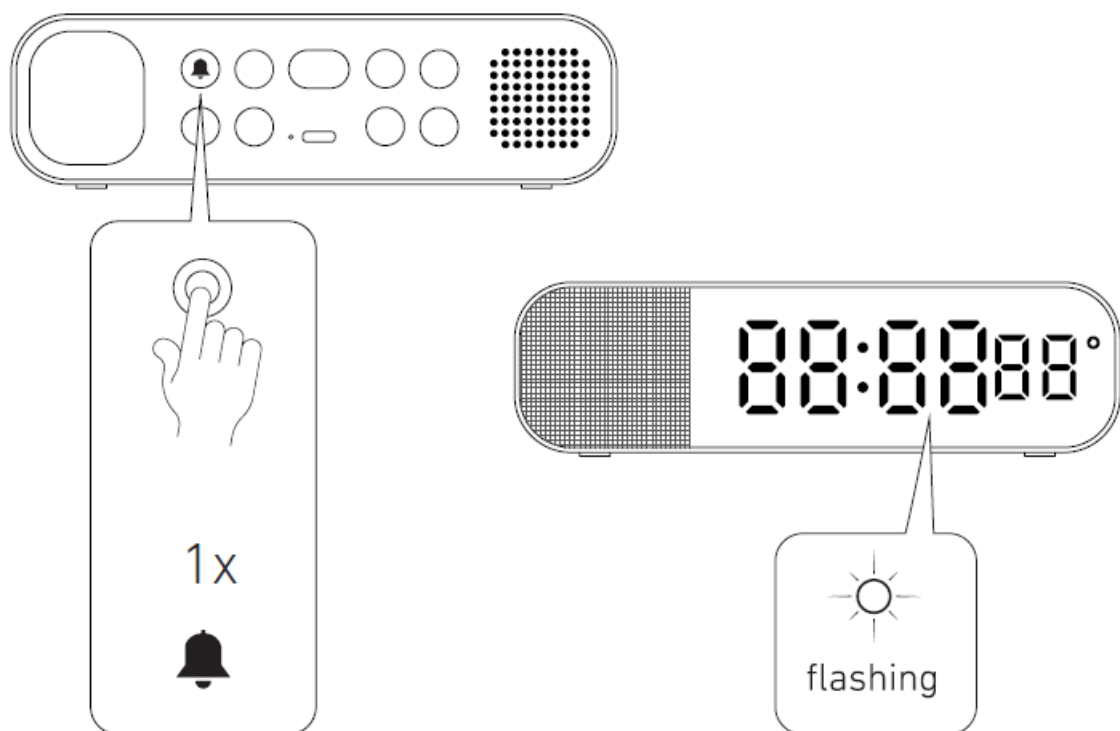


NOTE: QUIT BLUETOOTH AND SLEEP SOUND MODE

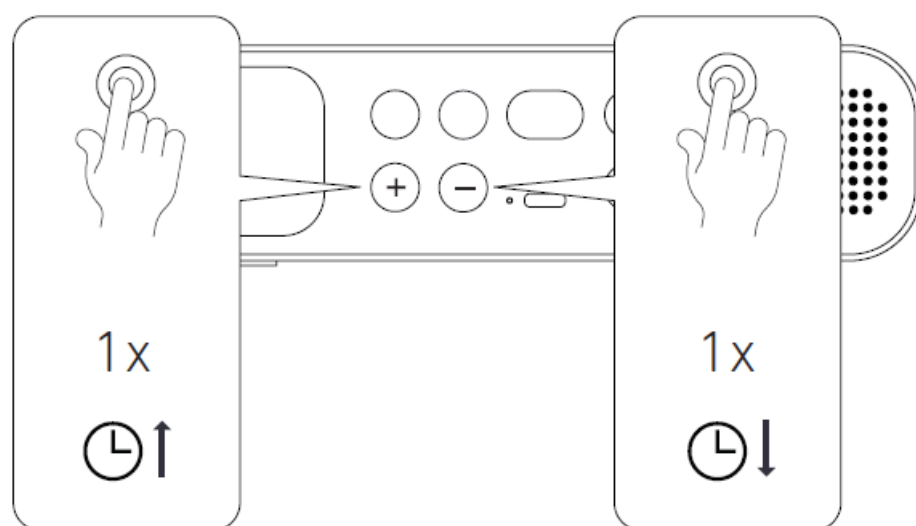
STEP 2: SET HOUR



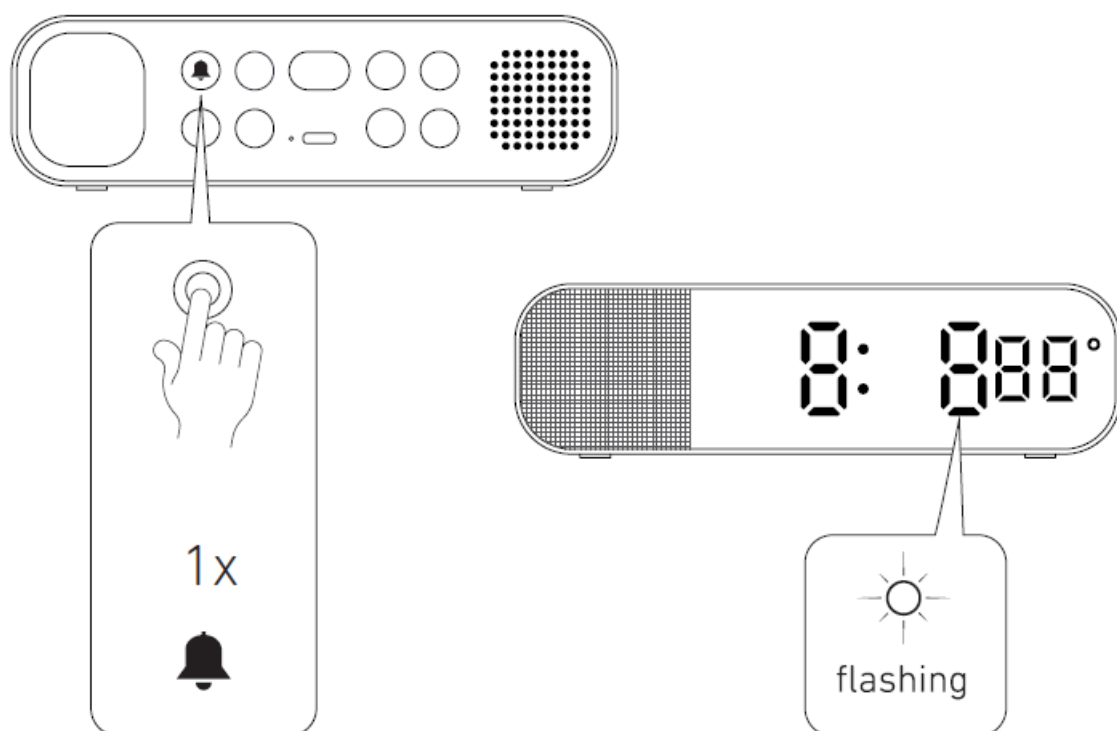
STEP 3



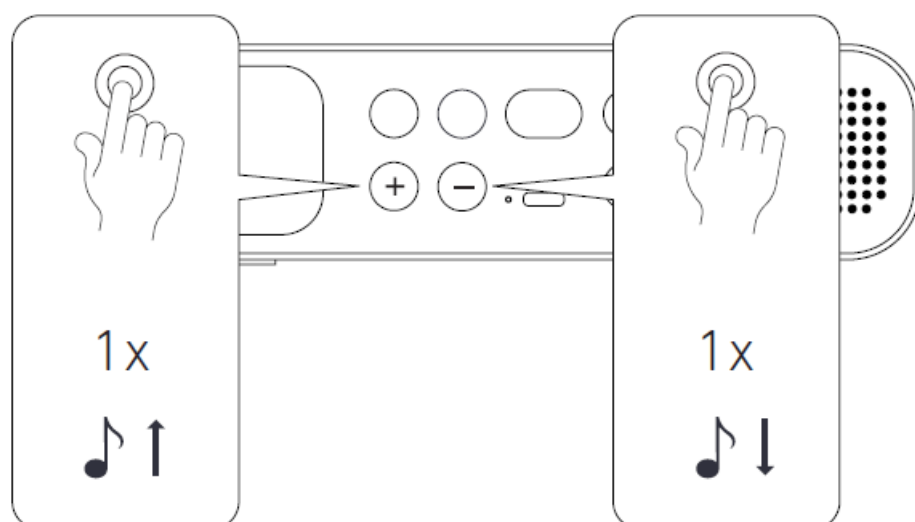
STEP 4: SET MINUTES



STEP 5

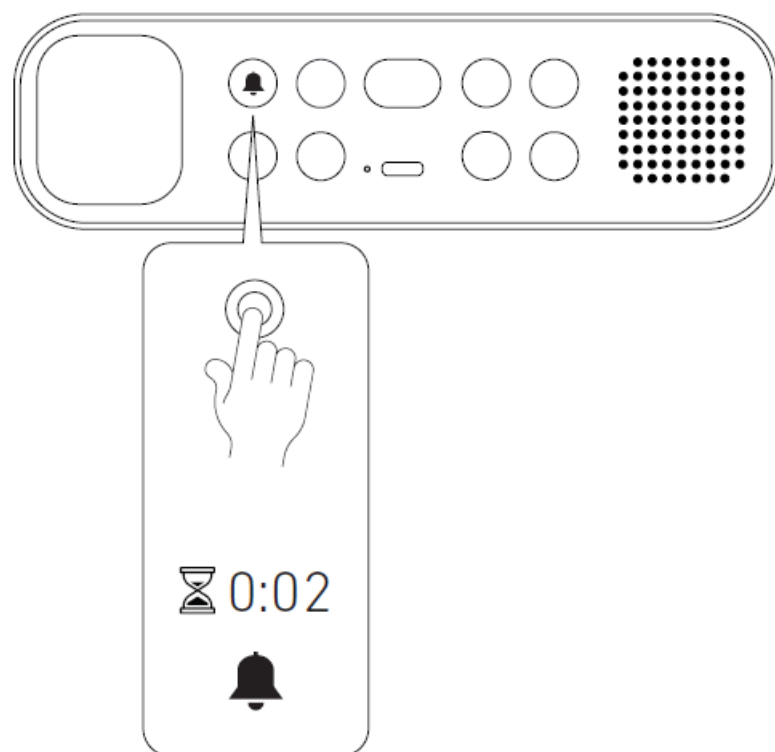


STEP 6: CHOOSE SOUND

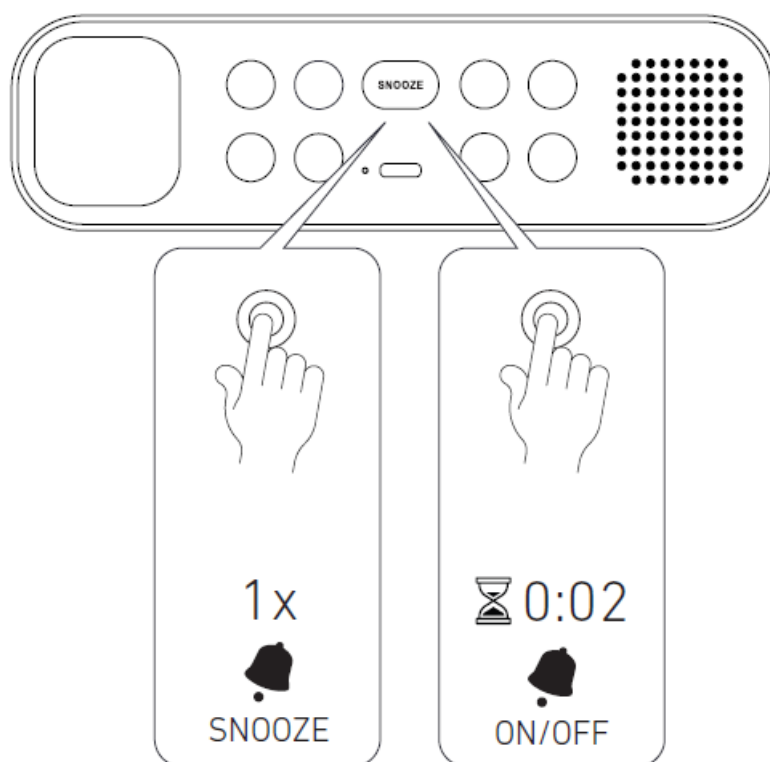


LED WAKE UPLIGHT STARTS AUTOMATICALLY 15MIN BEFORE ALARM 20

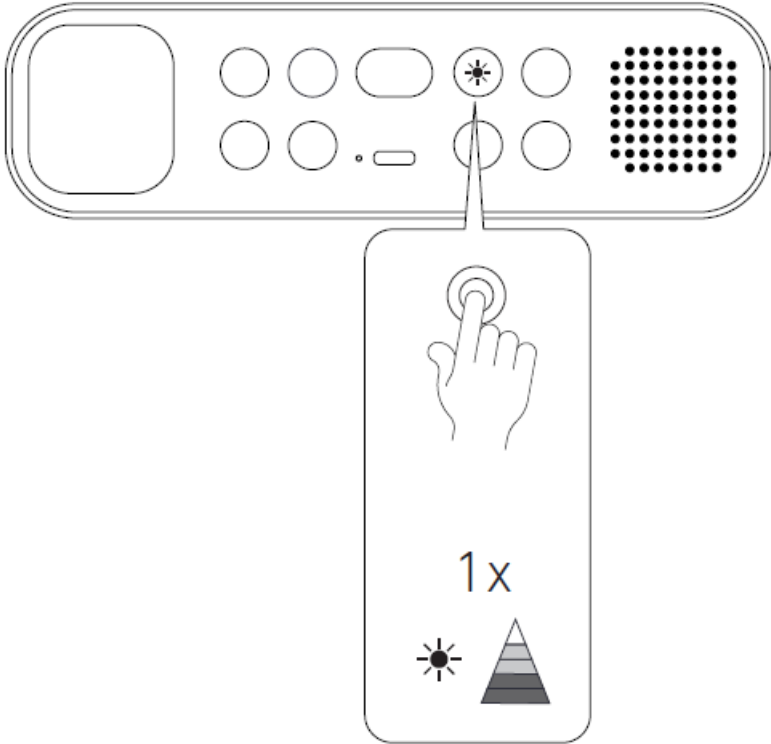
STEP 7: ALARM SET



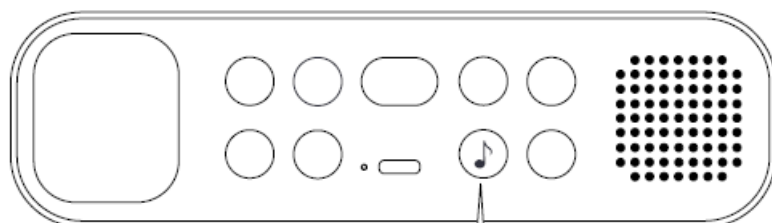
ALARM ON/OFF



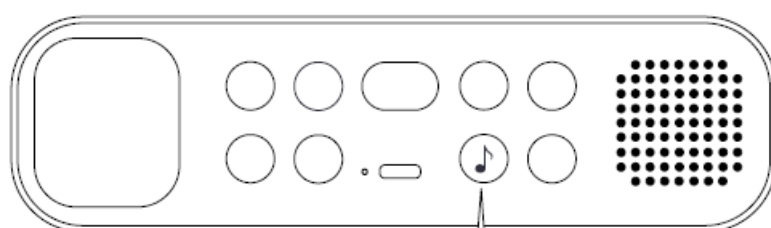
DISPLAY BRIGHTNESS



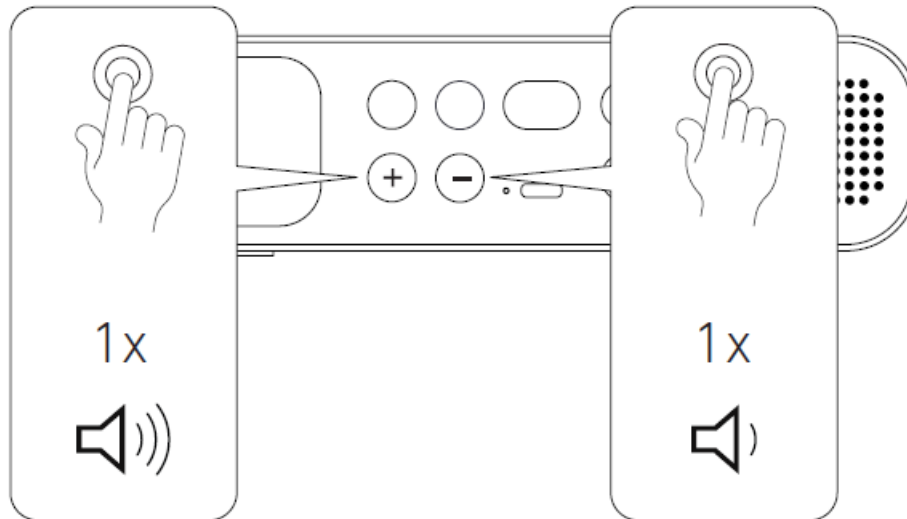
CHOOSE SLEEP SOUND



30:00



CHANGE VOLUME



TECHNICAL SPECIFICATIONS

- Dimensions: 210*117*51 mm
- Weight: 350g
- Speaker: 4Ω 3W
- Alarmclock
- Wake up light
- Wake up and sleep sounds
- LED display with dimming function and indoor temperature
- Qi charging: up to 15W
- Bluetooth: version 5.0
- Including USB to USB-C 3A charging cable
- We suggest to use a 9V / 2.22A adapter

FCC STATEMENT

This device complies with part 15 of the FCC rules. Operation is subject to the following two conditions:

1. This device may not cause harmful interference and
2. This device must accept any interference received, including interference that may cause undesired operation.

Important: Changes or modifications to this product not authorized could void the FCC compliance and negate your authority to operate the product. NOTE: This equipment has been tested and found to comply with the limits for a Class B digital device, pursuant to part 15 of the FCC Rules. These limits are designed to provide reasonable protection against harmful interference in a residential installation. This equipment generates and can radiate radio frequency energy and, if not installed and used in accordance with the instructions, may cause harmful interference to radio communications.

However, there is no guarantee that interference will not occur in a particular installation. If this equipment does cause harmful interference to radio or television reception, which can be determined by turning the equipment off and on, the user is encouraged to try to correct the interference by one or more of the following measures:

- Reorient or relocate the receiving antenna.
- Increase the separation between the equipment and receiver.

- Connect the equipment into an outlet on a circuit different from that to which the receiver is connected.
- Consult the dealer or an experienced radio / TV technician for help.

FCC Radiation Exposure Statement: This equipment complies with FCC radiation exposure limits set forth for an uncontrolled environment. This equipment should be installed and operated with minimum distance 20cm between the radiator & your body.


FCC ID: 2ACVC-AWAKE

SAFETY AND MAINTENANCE INSTRUCTIONS

1. Please read this operation manual carefully before use.
2. The safety and maintenance instructions in this operation manual should be retained for future reference and must be followed at all times.
3. Keep the product away from heat sources such as radiators, heaters or other appliances that produce heat.
4. Place the speakers in a stable position to avoid fall and cause damage or personal injury.
5. Do not expose the product to direct sunlight for longer periods. High temperatures may shorten the life of the product, destroy the battery and distort certain plastic parts.
6. Do not expose the product to extreme cold as it may damage the internal circuit board.
7. Rechargeable batteries have a limited number of charge cycles. Battery life and number of charge cycles varies by use and settings.
8. Avoid liquids getting into the product.
9. Before wiping with a dry cloth to clean the speakers, set the power switch to the off position and unplug the power cord from the power outlet.
10. Do not throw with or stamp on the product. This may damage the internal circuit board.
11. Do not try to disassemble the product. This must only be done by a professional.
12. Do not use concentrated chemical products or detergents to clean the product.
13. Keep the surface away from sharp things, as these may cause damage to the plastic parts.
14. Use 9V / 2.22A power supplies only. The connection of power supplies with higher voltage may lead to severe damage.
15. Do not arbitrarily discard or place the lithium battery near fire or intense heat in order to avoid a risk of explosion.

If you do experience any problems with your product please contact the retailer you purchased the product from. The retailer will provide you with guidance and if that does not solve the problem, the retailer will handle the claim directly with KREAFUNK.

Documents / Resources

	<p>KREAFUNK AWAKE Alarmclock with Bluetooth Speaker and Qi Charger [pdf] User Manual</p> <p>AWAKE, 2ACVC-AWAKE, 2ACVCAWAKE, AWAKE Alarmclock with Bluetooth Speaker and Qi Charger, AWAKE Alarmclock with Bluetooth Speaker and Qi Charger</p>
---	--