



KREAFUNK aLOOMI Bluetooth Speaker with Lamp User Manual

[Home](#) » [KREAFUNK](#) » KREAFUNK aLOOMI Bluetooth Speaker with Lamp User Manual 

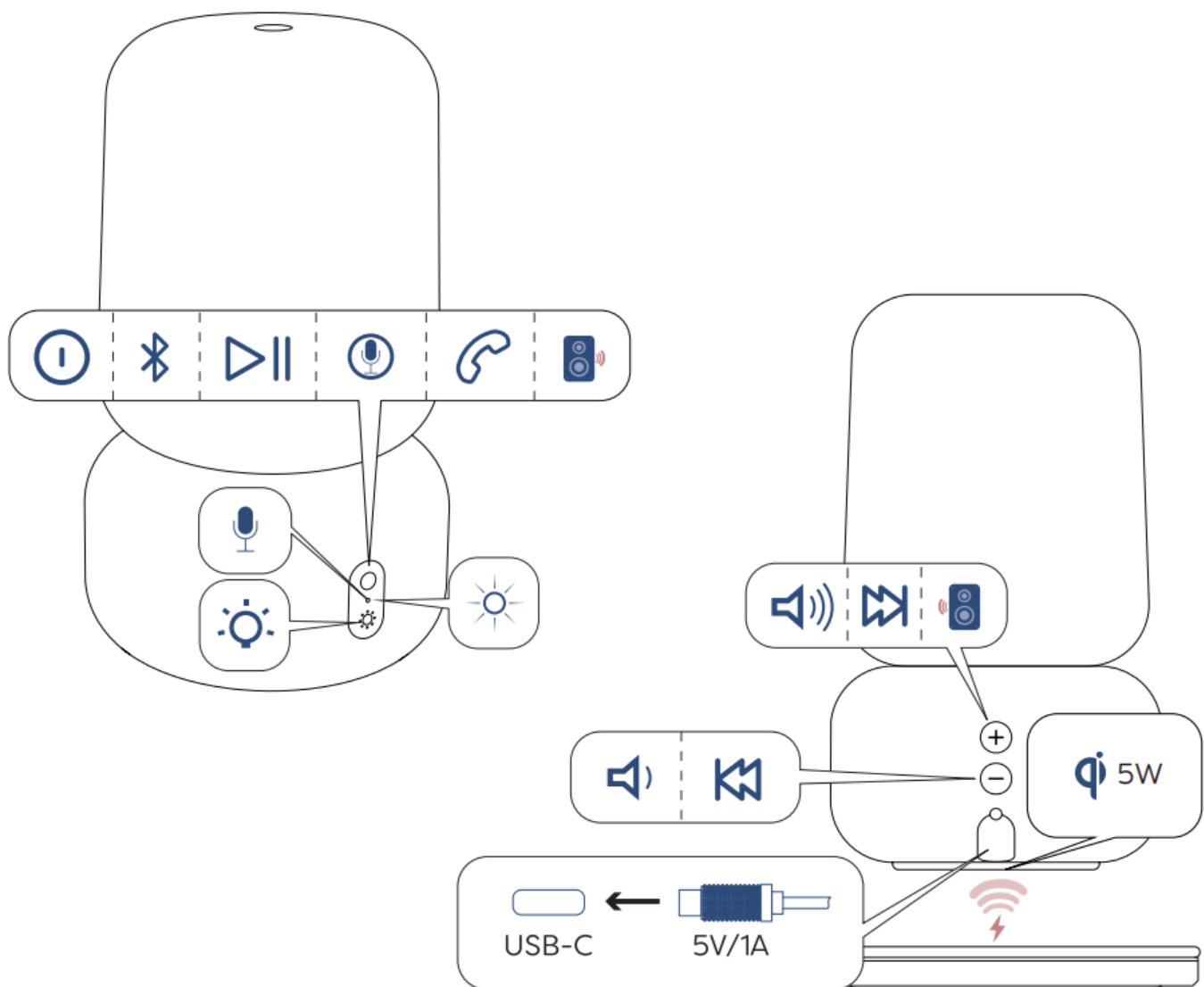
KREAFUNK aLOOMI Bluetooth Speaker with Lamp



Contents

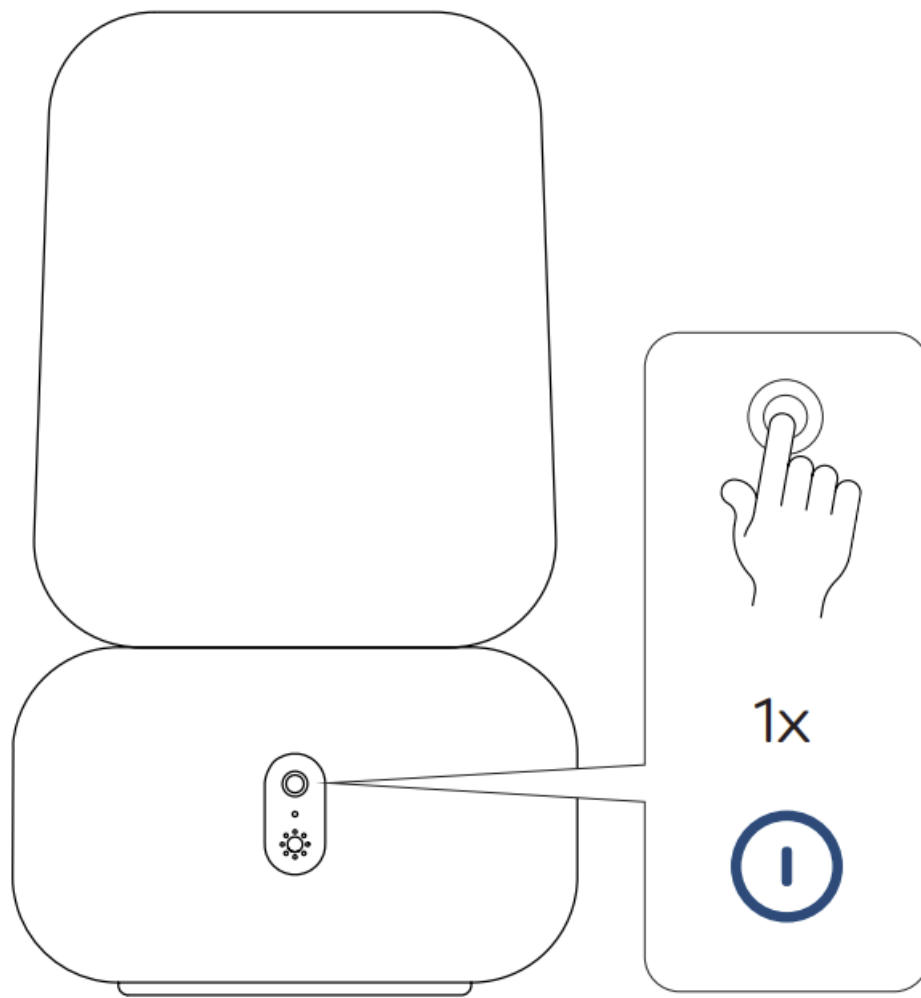
- [1 Overview](#)
- [2 On/off](#)
- [3 Listen via bluetooth](#)
- [4 Manual bluetooth pairing](#)
- [5 Listen via bluetooth](#)
- [6 Charging](#)
- [7 Battery status](#)
- [8 Play/pause](#)
- [9 Change volume, change track](#)
- [10 LAMP](#)
- [11 Phone](#)
- [12 Voice assistant](#)
- [13 Stereo play \(TWS\)](#)
- [14 Reset](#)
- [15 Technical specifications](#)
- [16 FCC statement](#)
- [17 Safety and maintenance instructions](#)
- [18 Documents / Resources](#)
 - [18.1 References](#)
- [19 Related Posts](#)

Overview



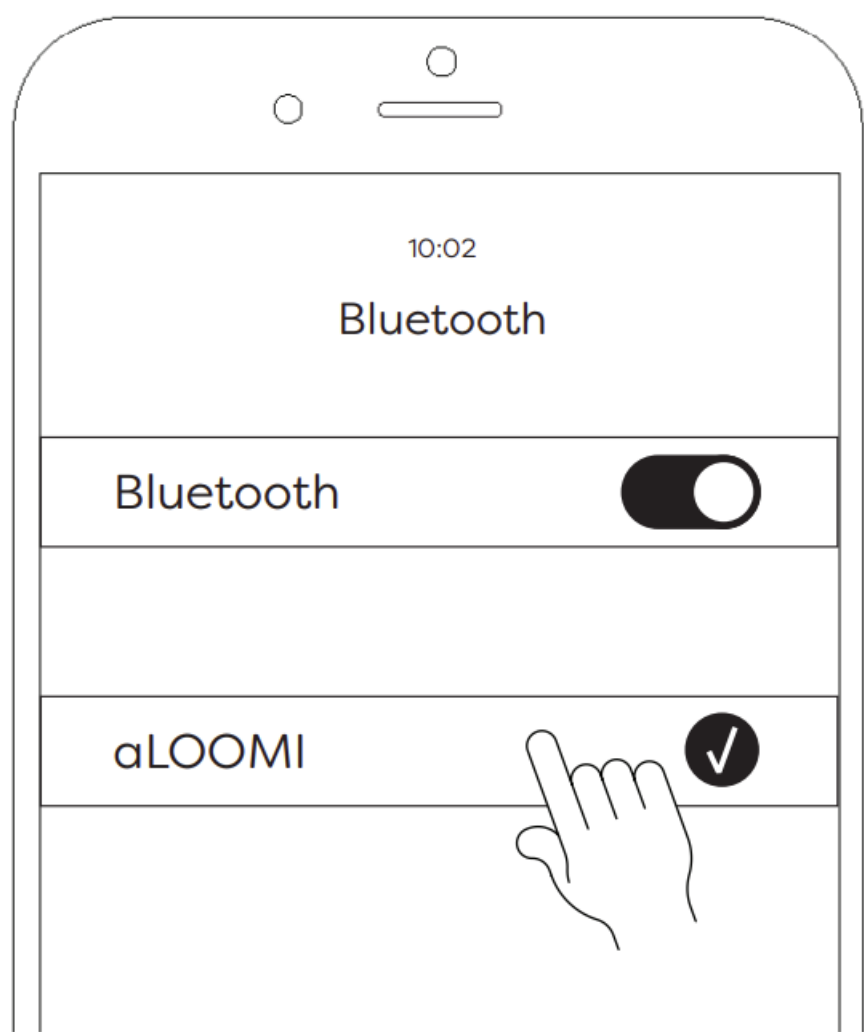
On/off

Step 1



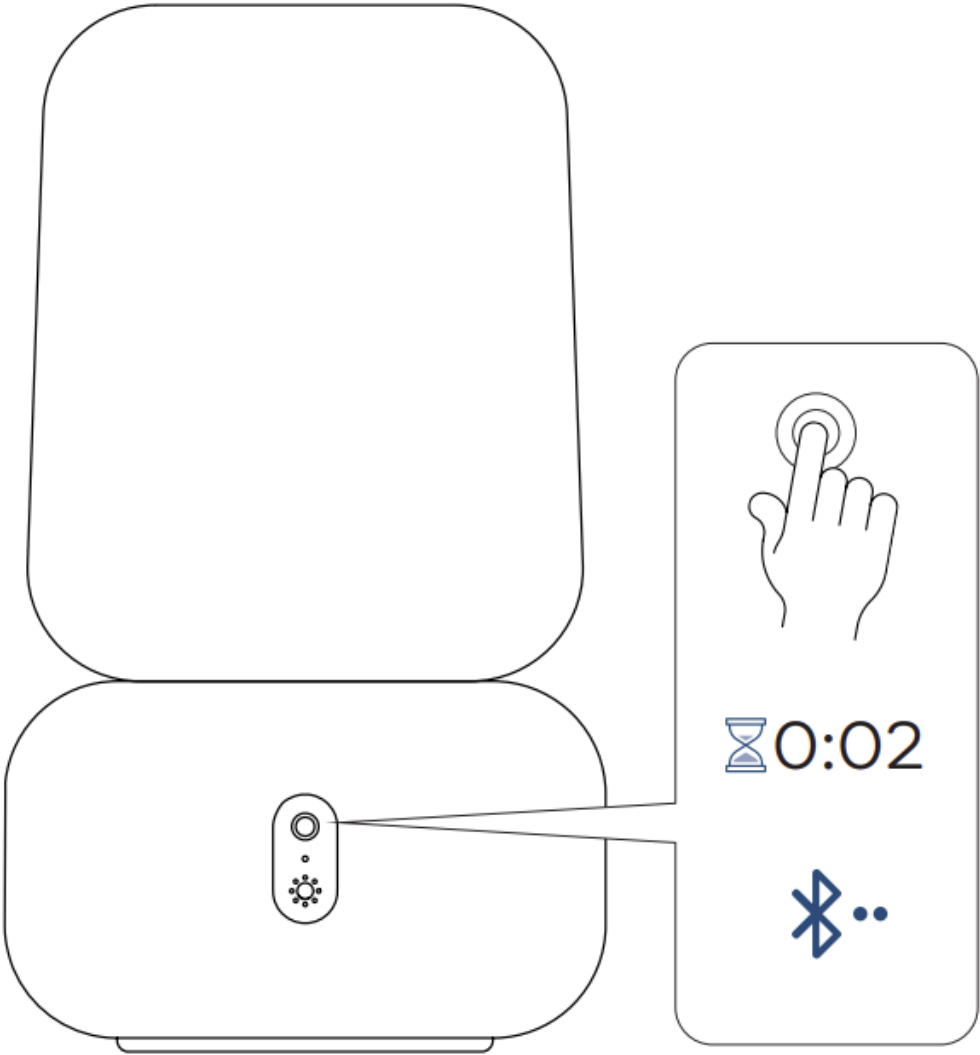
Listen via bluetooth

Step 2



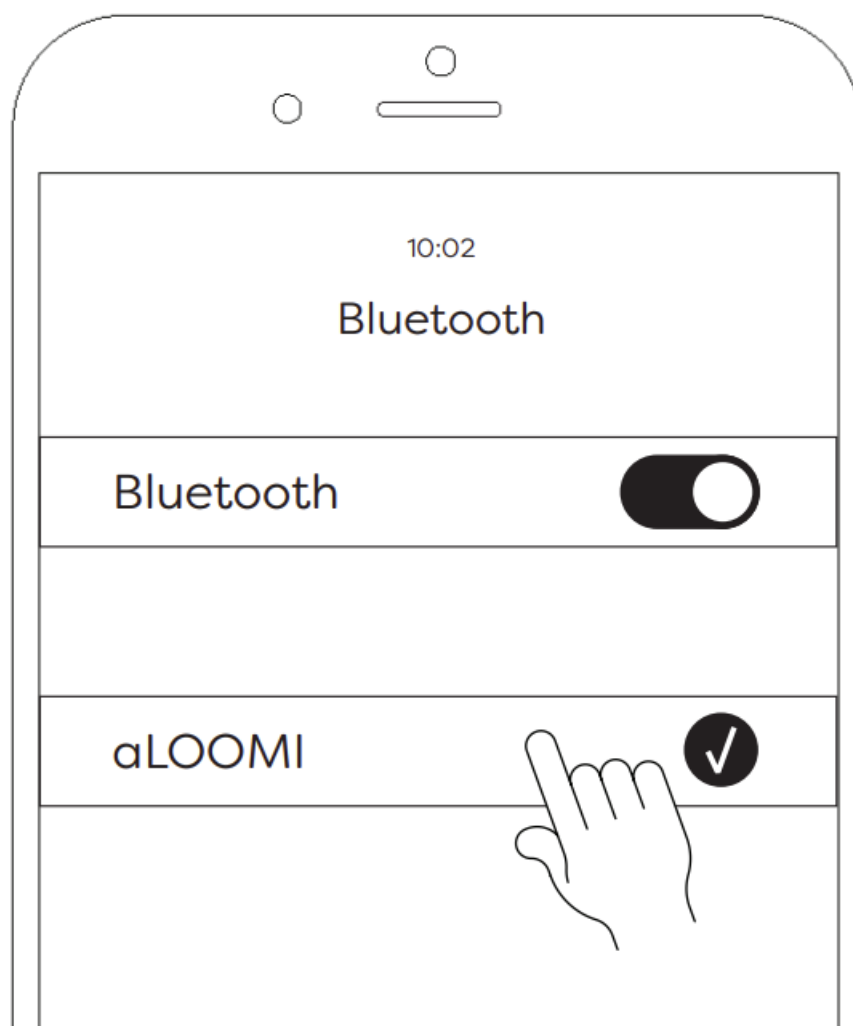
Manual bluetooth pairing

Step 1

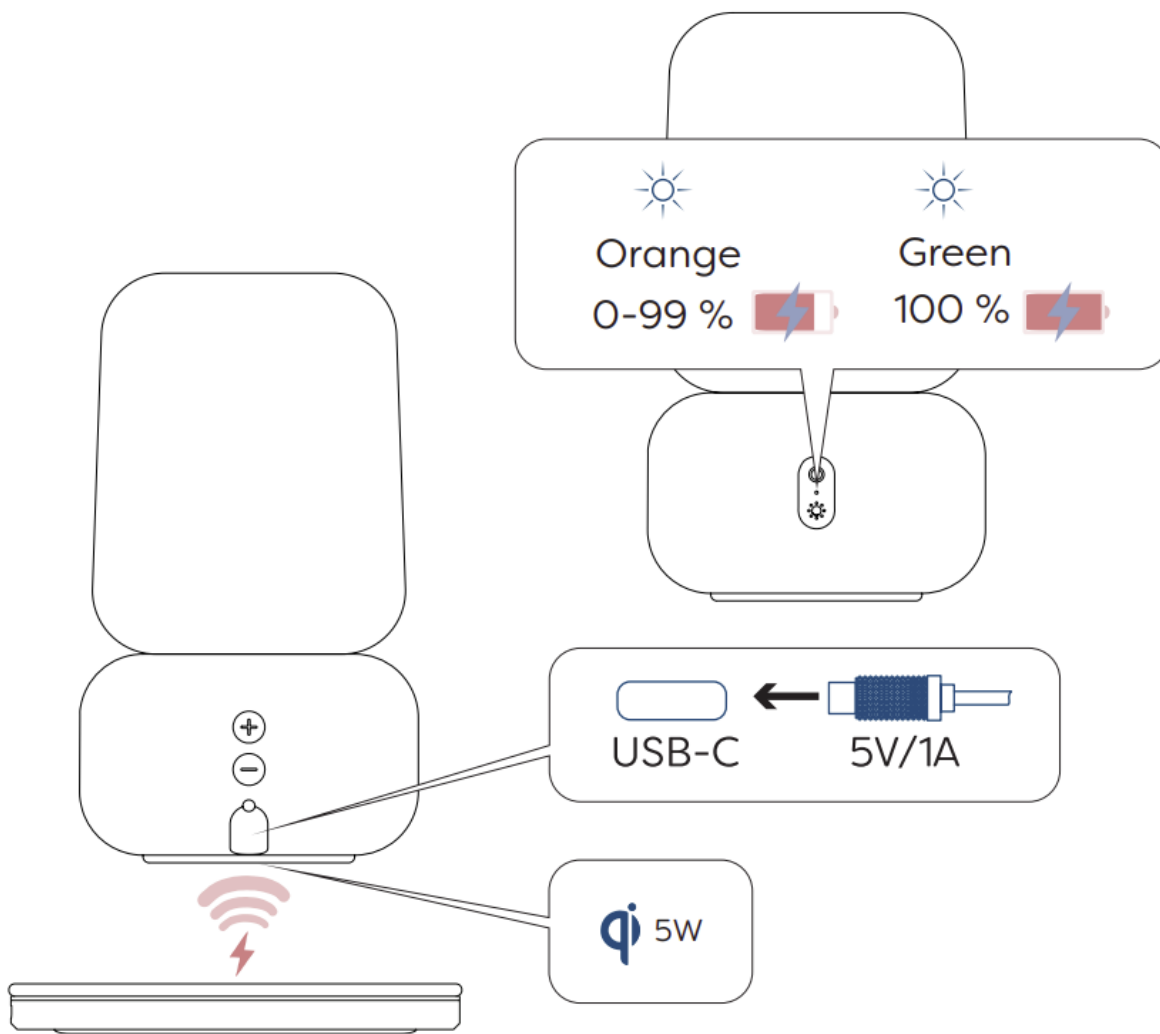


Listen via bluetooth



Step 2





Charging



Battery status

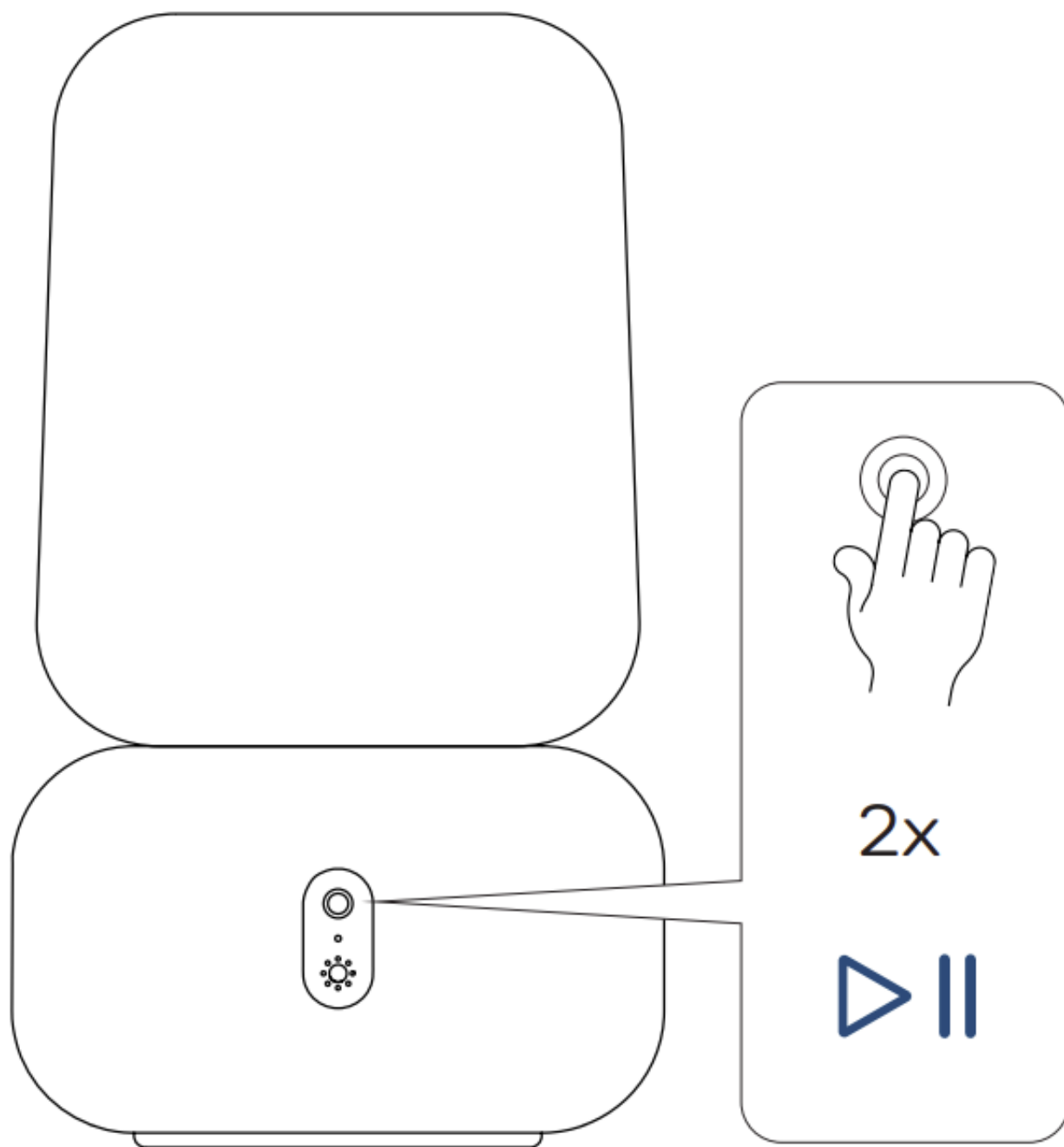


Red

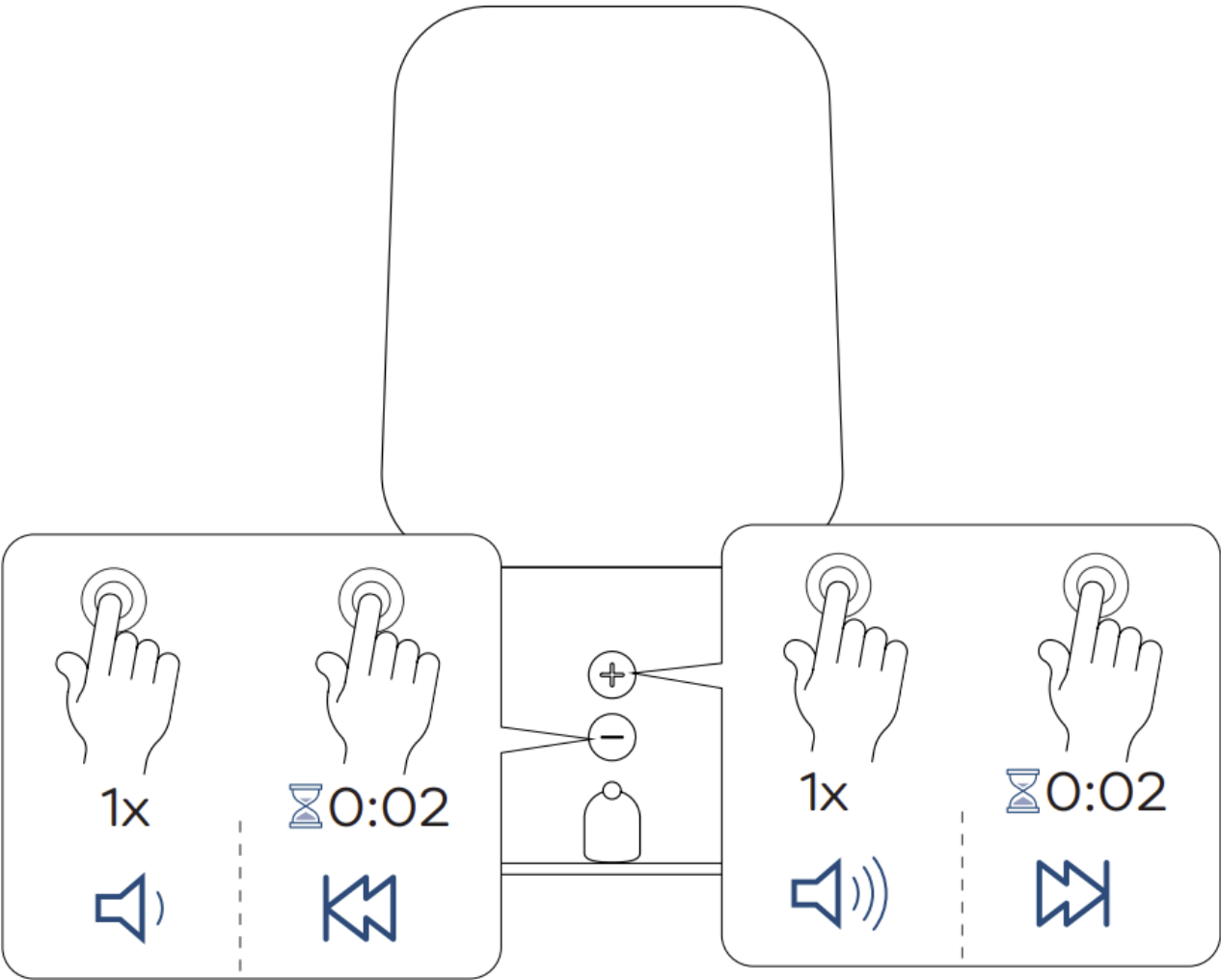
0-10 %  10-100 % 



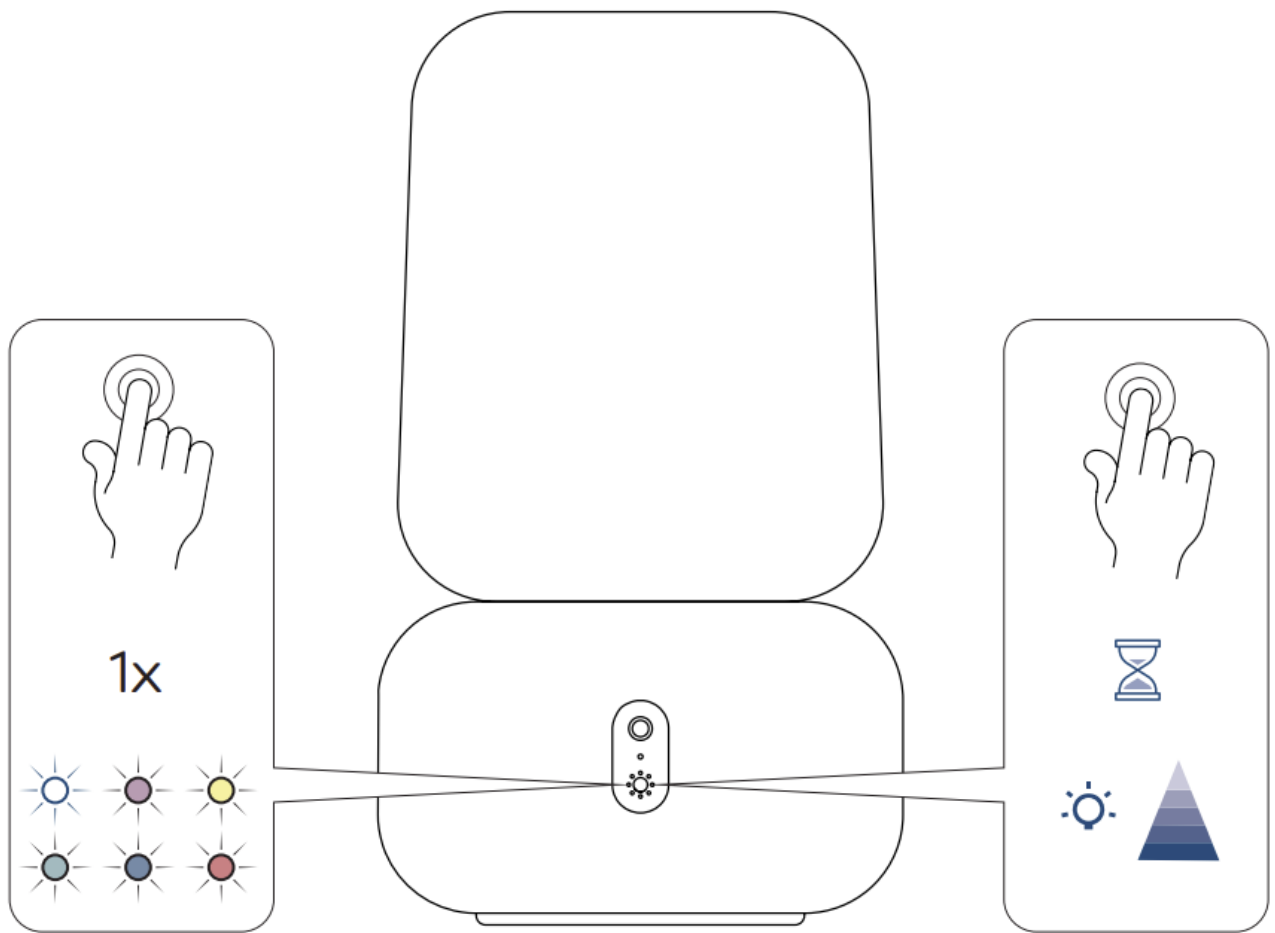
Play/pause



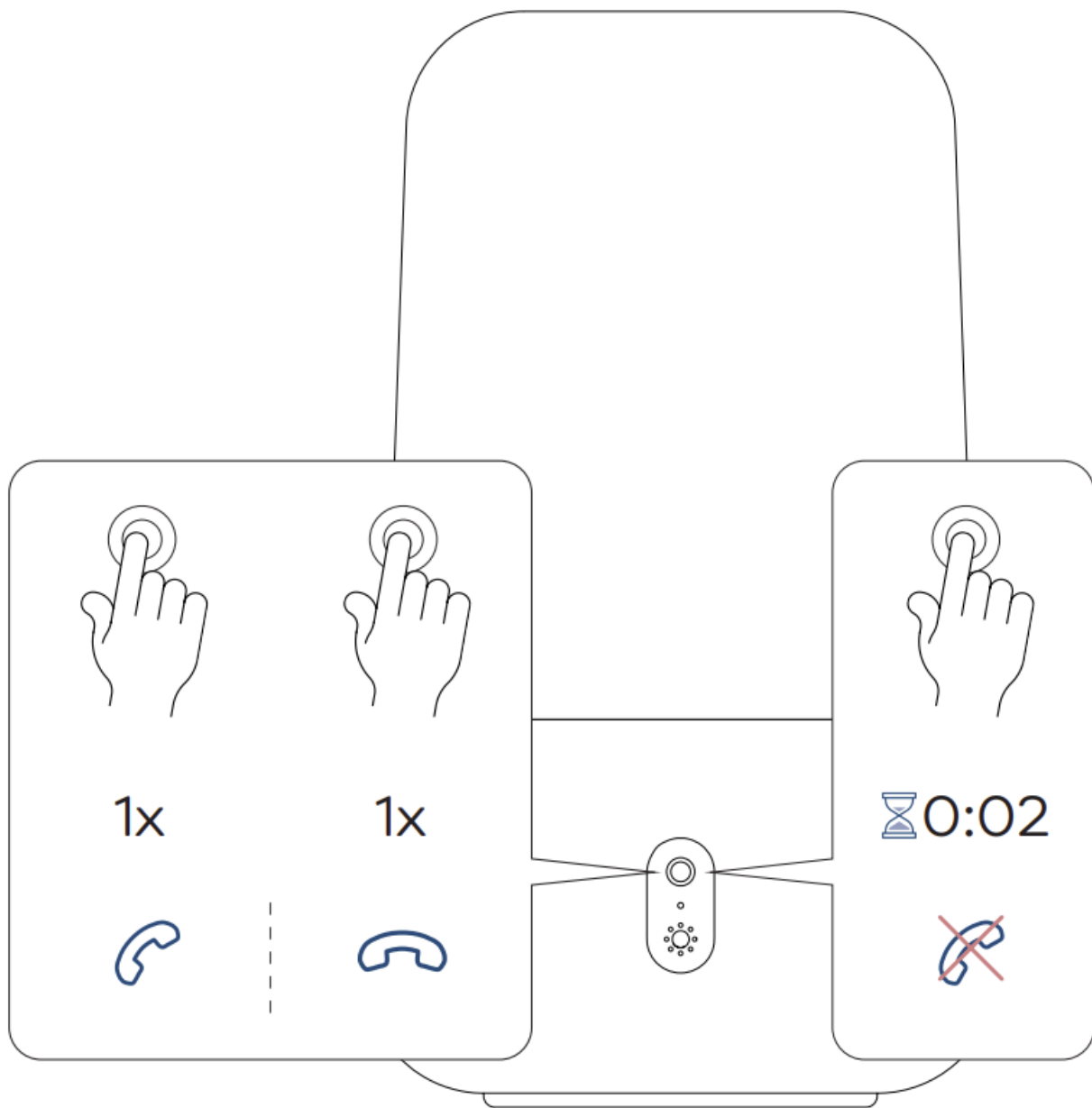
Change volume, change track



LAMP



Phone

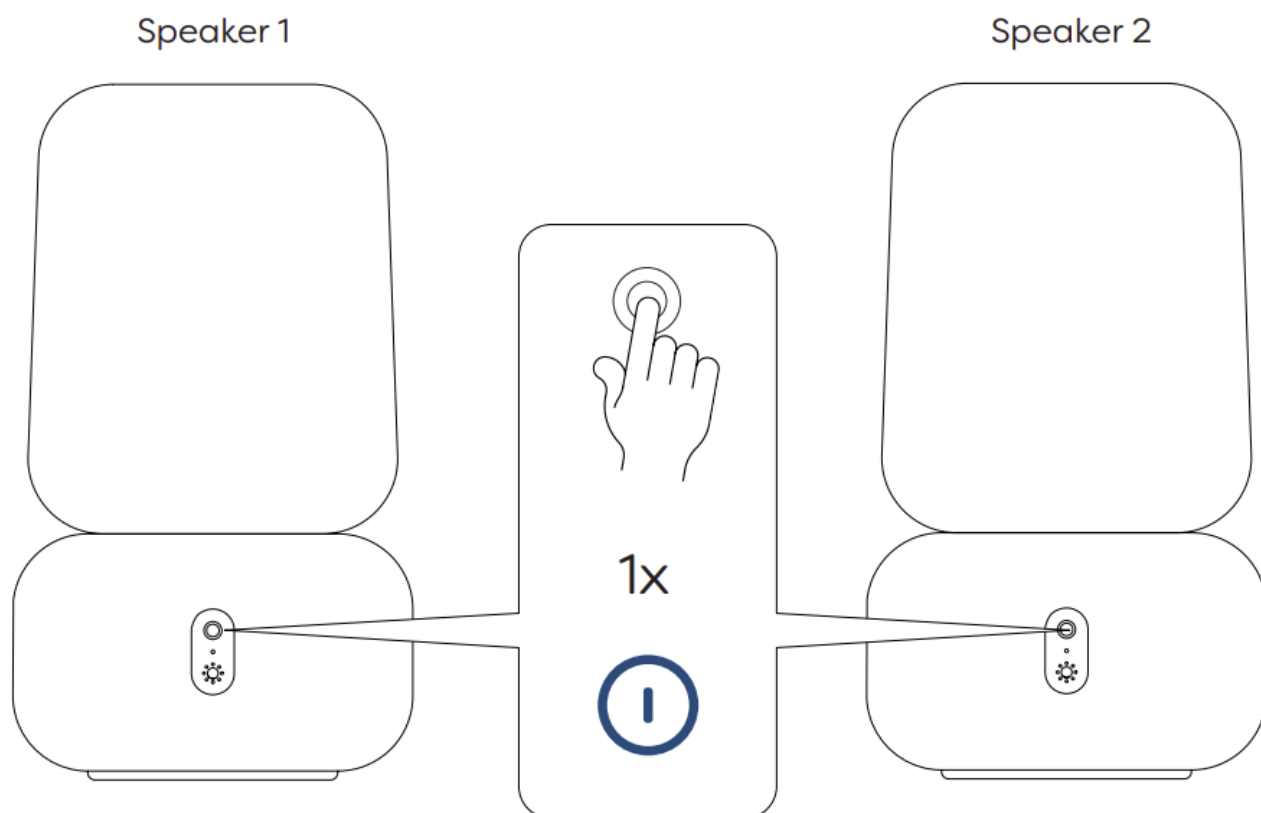


Voice assistant



Stereo play (TWS)

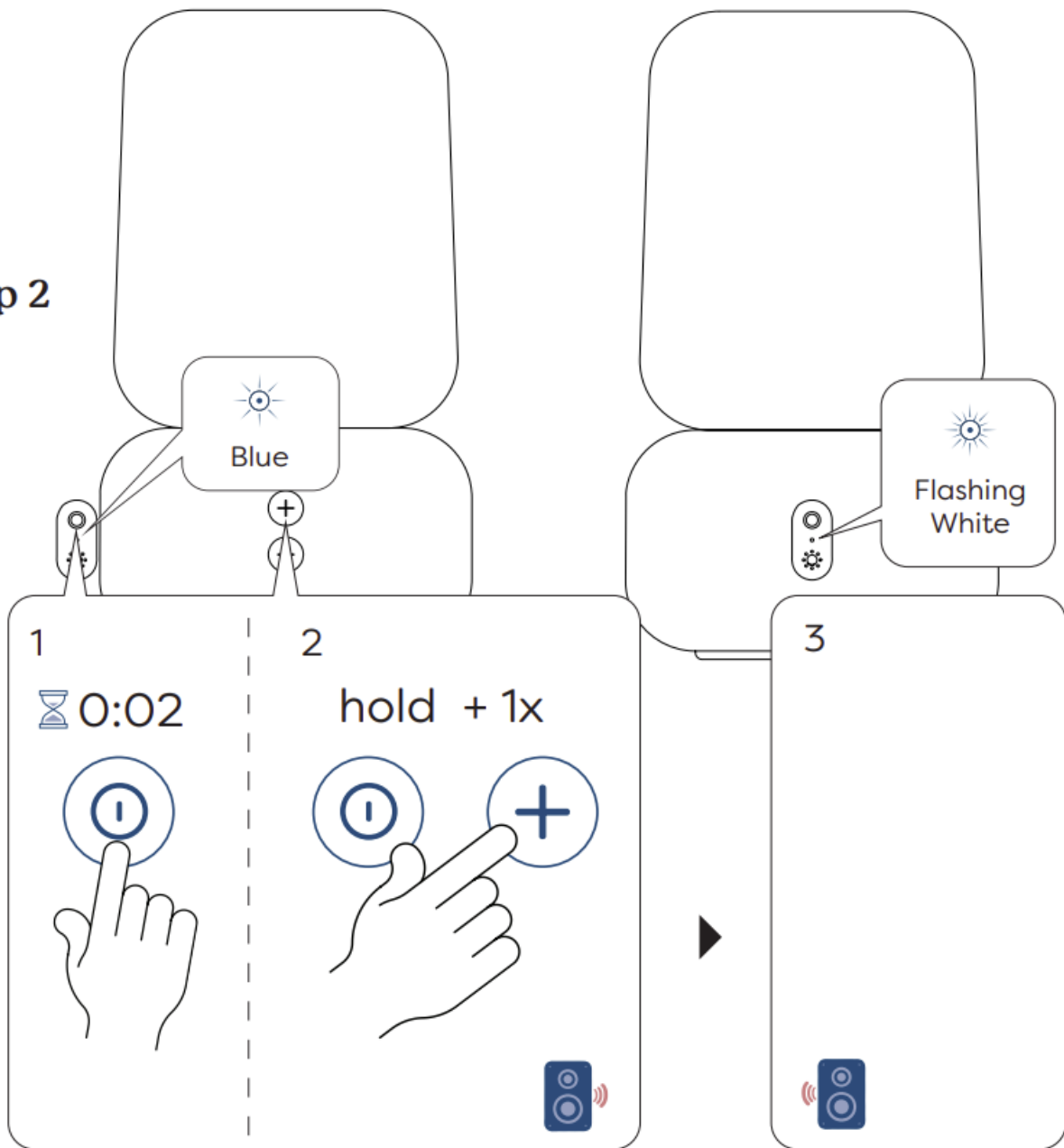
Step 1



Speaker 1

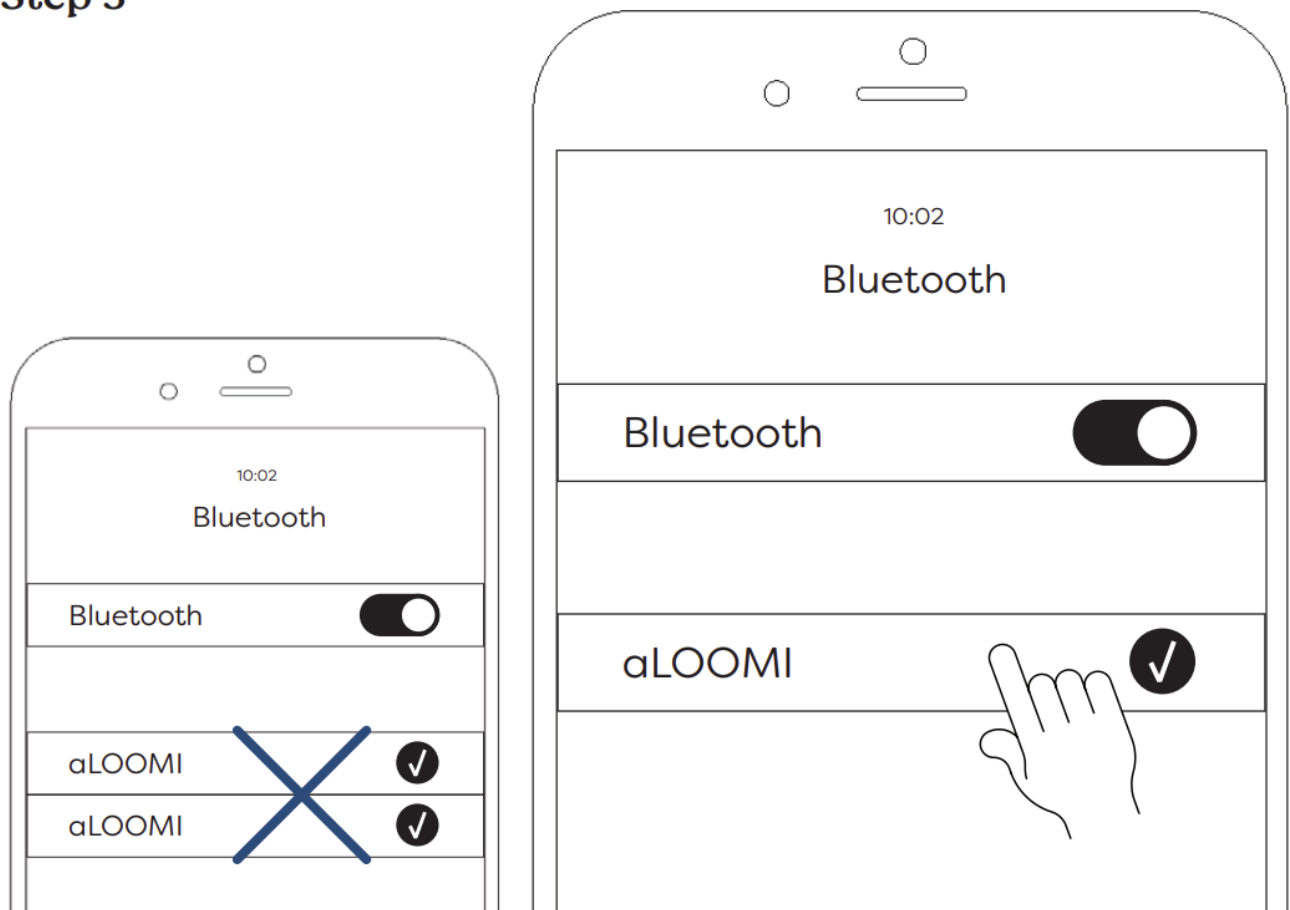
Speaker 2

Step 2

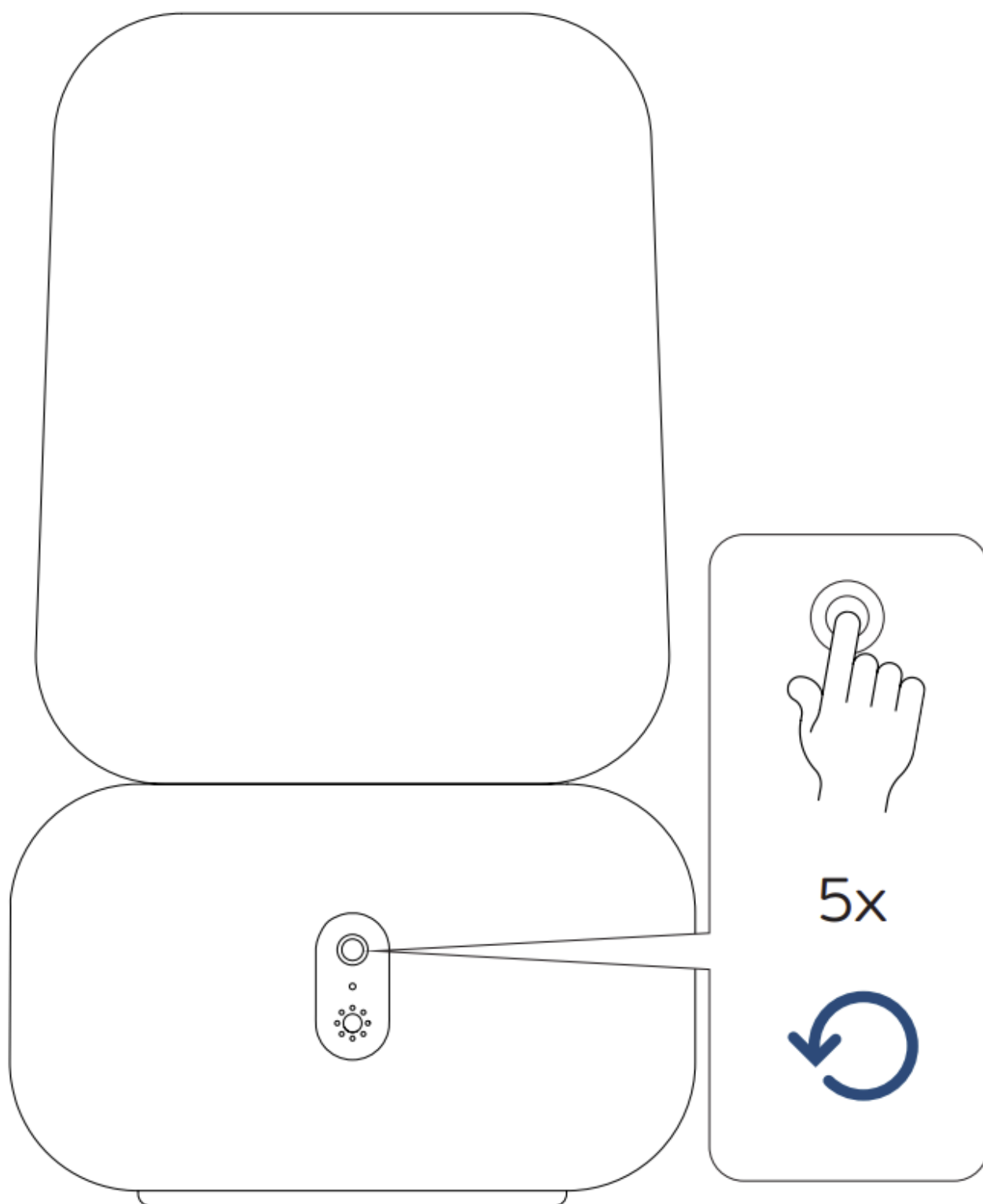


only push on speaker 1

Step 3



Reset



Technical specifications

- Dimensions: 115*194 mm (Ø*H)
- Weight: 600g
- Speaker: Ø45 mm 4Ω 6W
- Playing time: up to 30 hours
- Charging time: 3-4 hours (USB) / 6-8 hours (Qi)
- Charging cable included
- Stereo Play (TWS)
- Voice Assistant

- Build in Lithium battery with 3.7V, 2200mAh
- Frequency band: 2402–2480 MHz
- Maximal radio frequency effect: <3 dBm
- Bluetooth: version 5.0
- Range: up to 10 m
- Input power: 5V / 1A
- Dust and water-resistant (IPX4)

FCC statement

This device complies with part 15 of the fcc rules. operation is subject to the following two conditions:

1. This device may not cause harmful interference and
2. This device must accept any interference received, including interference that may cause undesired operation

Important: Changes or modifications to this product not authorized could void the FCC compliance and negate your authority to operate the product.

NOTE: This equipment has been tested and found to comply with the limits for a Class B digital device, pursuant to part 15 of the FCC Rules.

These limits for a signed to provide reasonable protection against harmful interference in a residential installation. This equipment generates uses and can radiate radio frequency energy and, if not installed and used in accordance with the instructions, may cause harmful interference to radio communications.

However, there is no guarantee that interference will not occur in a particular installation. If this equipment does cause harmful interferenceto radio or television reception, which can be determined by turning the equipment off and on, the user is encouraged to try to correct the interference by one or more of the following measures:

- Reorient or relocate the receiving antenna.
- Increase the separation between the equipment and receiver.
- Connect the equipment into an outlet on a circuit different from that to which the receiver is connected.
- Consult the dealer or an experienced radio / TV technician for help.

FCC Radiation Exposure Statement: This equipment complies with FCC radiation exposure limits set forth for an uncontrolled environment. This equipment should be installed and operated with minimum distance 20cm between the radiator & your body.

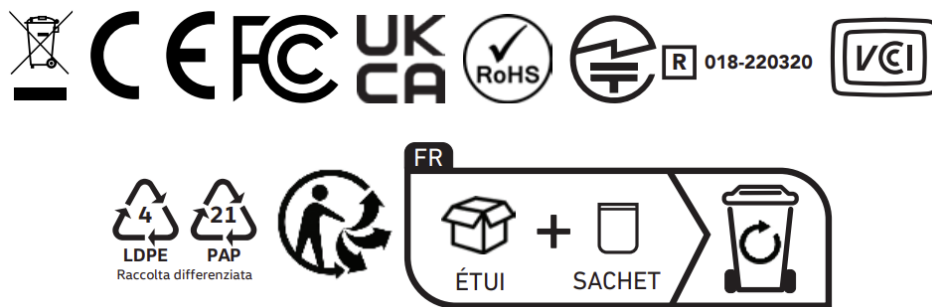
FCC ID: 2ACVC-ALOOMI

Safety and maintenance instructions

1. Please read this operation manual carefully before use.
2. The safety and maintenance instructions in this operation manual should be retained for future reference and must be followed at all times.
3. Keep the product away from heat sources such as radiators, heaters or other appliances that produce heat.
4. Place the speakers in a stable position to avoid fall and cause damage or personal injury.
5. Do not expose the product to direct sunlight for longer periods. High temperatures may shorten the life of the product, destroy the battery and distort certain plastic parts.
6. Do not expose the product to extreme cold as it may damage the internal circuit board.

7. Rechargeable batteries have a limited number of charge cycles. Battery life and number of charge cycles varies by use and settings.
8. Avoid liquids getting into the product.
9. Before wiping with a dry cloth to clean the speakers, set the power switch to the off position and unplug the power cord from the power outlet.
10. Do not throw with or stamp on the product. This may damage the internal circuit board.
11. Do not try to disassemble the product. This must only be done by a professional.
12. Do not use concentrated chemical products or detergent to clean the product.
13. Keep the surface away from sharp things, as these may cause damage to the plastic parts.
14. Use 5V / 1A power supplies only. The connection of power supplies with higher voltage may lead to severe damage.
15. Do not arbitrarily discard or place the lithium battery near fire or intense heat in order to avoid a risk of explosion.

If you do experience any problems with your product please contact the retailer you purchased the product from. The retailer will provide you with guidance and if that does not solve the problem, the retailer will handle the claim directly with Kreafunk.



Kreafunk ApS
Klamsagervej 35A, st.
8230 Aabyhoej
Denmark
www.Kreafunk.com
info@Kreafunk.dk
+45 96 99 00 20



| | |
|---|---|
|  | <p>KREAFUNK aLOOMI Bluetooth Speaker with Lamp [pdf] User Manual aLOOMI Bluetooth Speaker with Lamp, aLOOMI, Bluetooth Speaker with Lamp, Speaker with L amp, Lamp with Bluetooth Speaker</p> |
|  | <p>Kreafunk aLOOMI Bluetooth Speaker with Lamp [pdf] User Manual aLOOMI, Bluetooth, Speaker</p> |

References

-  [Kreafunk | Stilfuldt dansk design med fantastisk lyd](#)
-  [Declaration of conformity – Kreafunk](#)