



kreafunk aLIGHT LED Battery Light and Bluetooth Speaker Instruction Manual

[Home](#) » [KREAFUNK](#) » kreafunk aLIGHT LED Battery Light and Bluetooth Speaker Instruction Manual 

Contents

- [1 kreafunk aLIGHT LED Battery Light and Bluetooth Speaker](#)
- [2 Product Information](#)
- [3 Product Usage Instructions](#)
- [4 Overview](#)
- [5 Listen via Bluetooth](#)
- [6 Charging](#)
- [7 Reset](#)
- [8 Technical specifications](#)
- [9 FCC statement](#)
- [10 Safety and maintenance instructions](#)
- [11 Documents / Resources](#)
 - [11.1 References](#)



kreafunk aLIGHT LED Battery Light and Bluetooth Speaker



Product Information

- **Product Name:** aLIGHT
- **Features:** Bluetooth speaker with lamp and magnet
- **Compliance:** This product complies with the essential requirements and other relevant provisions of Directive 2014/53/EU.
- **Declaration of Conformity:** The declaration of conformity can be consulted at <https://Kreafunk.com/pages/declaration-of-conformity>
- **Material:** Made from 100% recycled plastic
- **Technical Specifications:** Not provided in the user manual extract
- **FCC Compliance:** This device complies with part 15 of the FCC rules.
- **FCC ID:** 2ACVC-ALIGHT

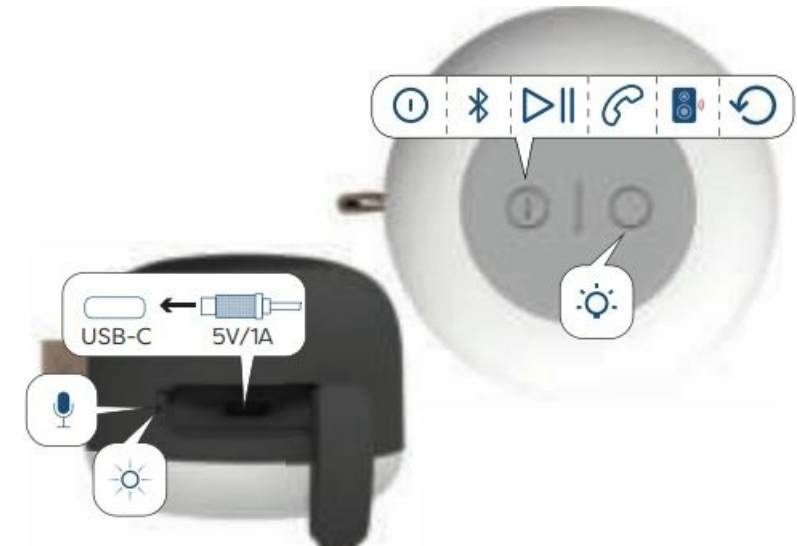
Product Usage Instructions

1. Step 1: Read the operation manual carefully before use.
2. **Step 2: For Bluetooth Listening:**
 1. Make sure the product is turned on.
 2. Press the Bluetooth button on the product.
 3. Pair your device with the aLIGHT Bluetooth speaker.
3. **Step 3: Charging the Product:**
 1. Connect the USB-C cable to the product.
 2. Plug the other end of the USB-C cable into a power source (5V/1A).
 3. Wait for the battery status to reach 100%.
4. **Step 4: Play/Pause Function:**
 1. Press the play/pause button once to start or pause playback.
5. **Step 5: Stereo Play (TWS):**
 1. Make sure both speakers are turned on and in Bluetooth mode.
 2. Press and hold the play/pause button on one of the speakers until both speakers start flashing blue.
 3. Wait for the speakers to connect and enjoy stereo playback.

Note: Please refer to the complete user manual for detailed instructions and additional safety information.

- This product is in compliance with the essential requirements and other relevant provisions of Directive 2014/53/EU.
- The declaration of conformity may be consulted at: <https://Kreafunk.com/pages/declaration-of-conformity>
- This stylish product is made from 100% recycled plastic

Overview

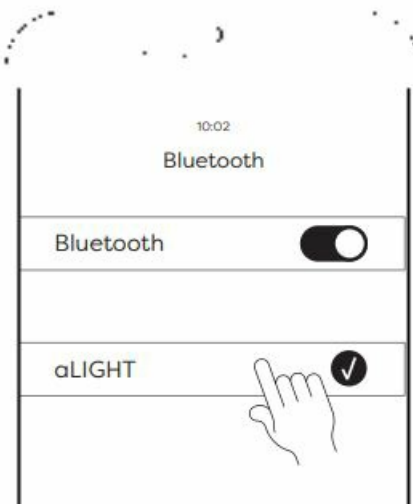


On/off



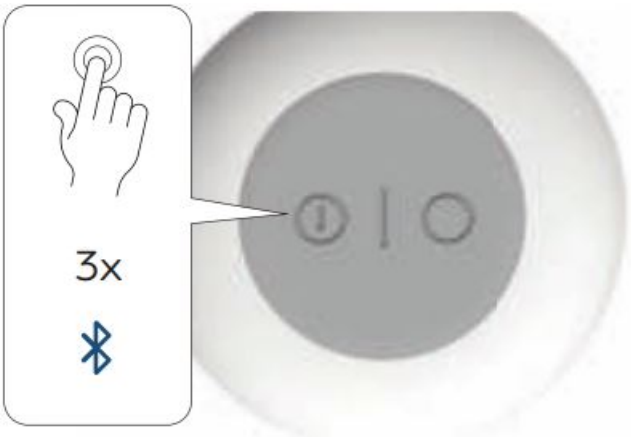
Listen via Bluetooth

Step 2



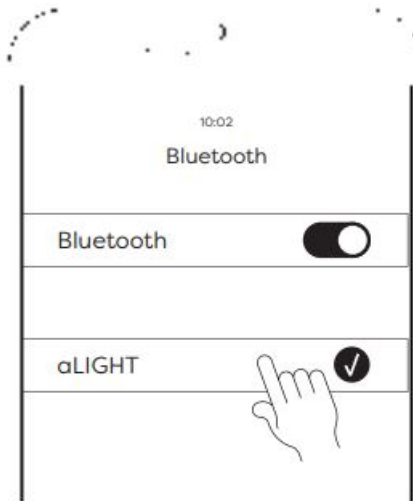
Manual Bluetooth pairing

Step 1

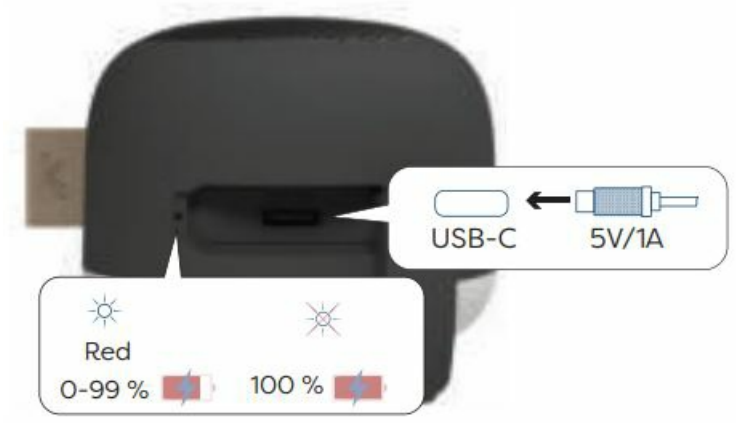


Listen via Bluetooth

Step 2



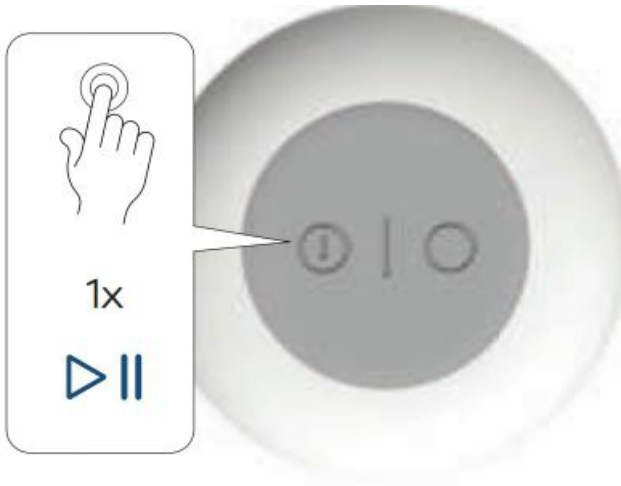
Charging



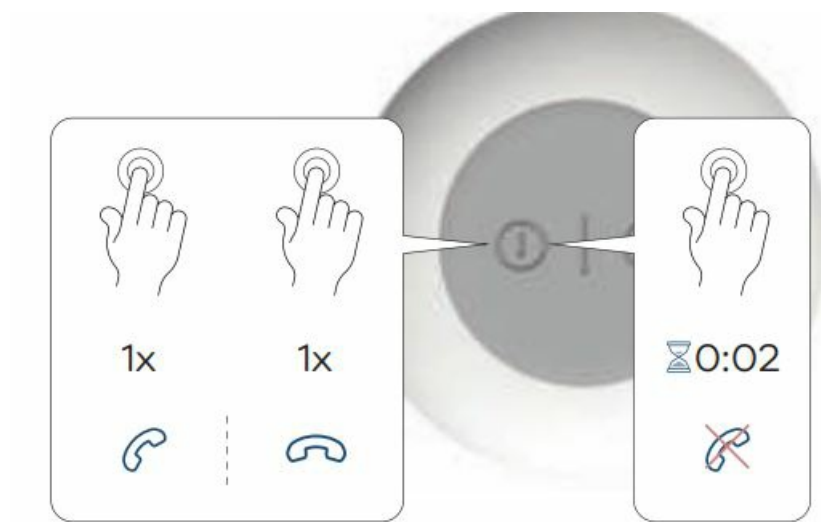
Battery status



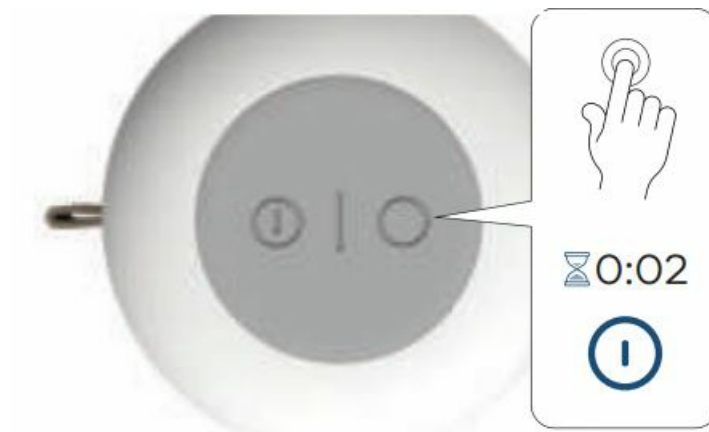
Play/pause



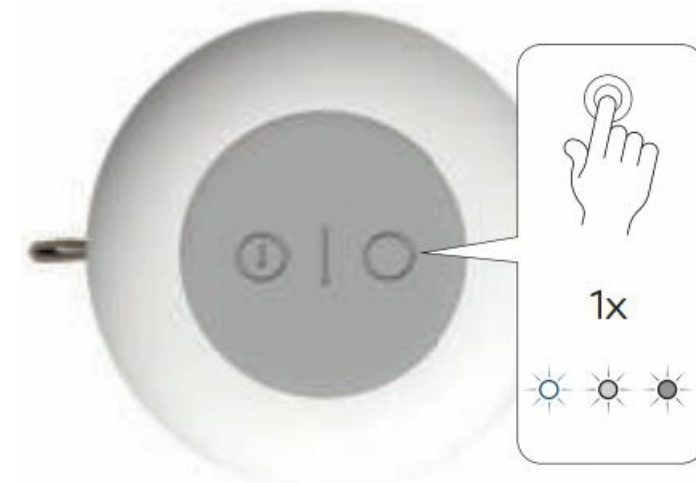
Phone



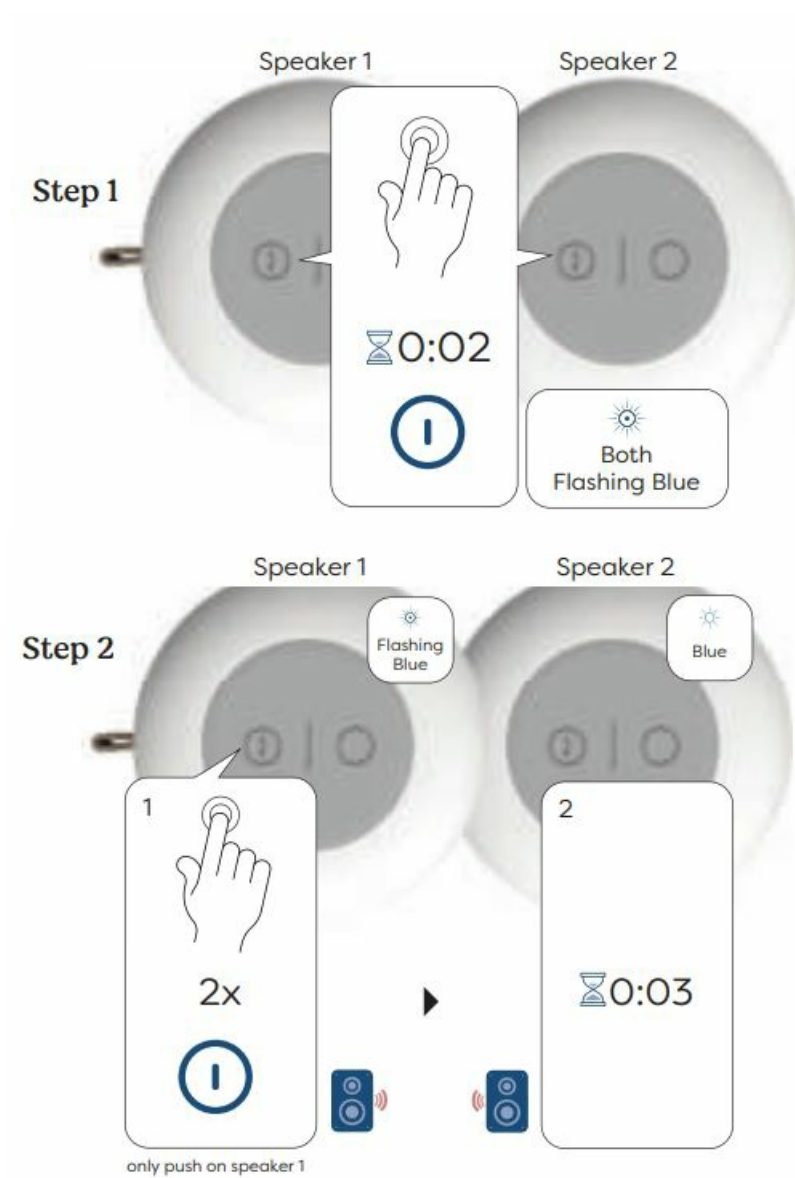
Lamp (on off)



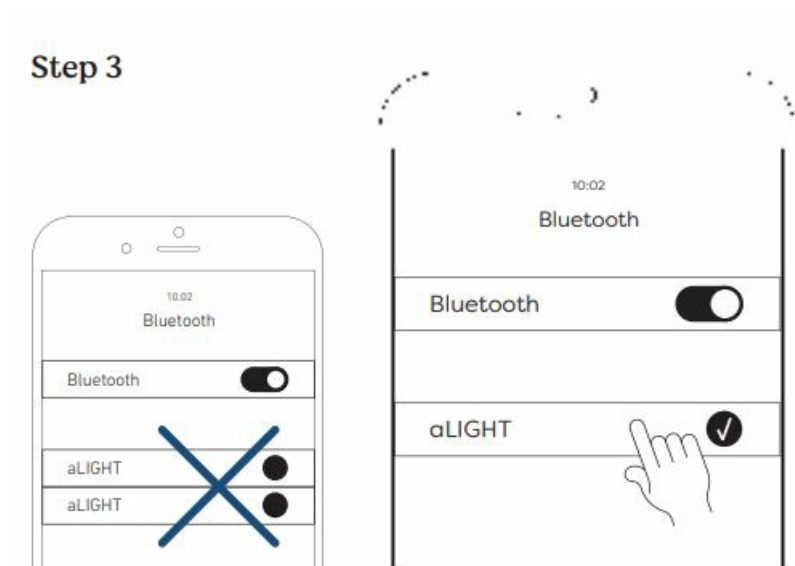
Lamp



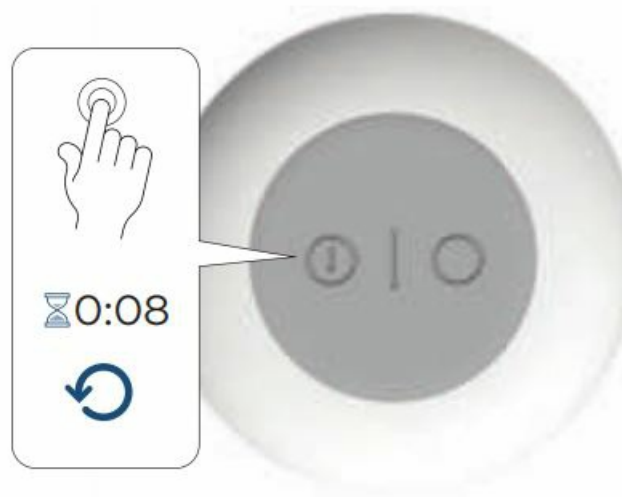
Stereo play (TWS)



Step 3



Reset



Technical specifications

- 100% recycled GRS plastic
- **Water-resistant** (IPX5)
- **Dimensions:** 64*51 mm (Ø*H)
- **Weight:** 100g
- **Speaker:** Ø40 mm 4Ω 5W
- **Playing time:** up to 15 hours
- **Light time:** up to 15 hours
- **Charging time:** 2 hours (USB)
- **USB-C** cable included
- **Lamp**
- **Magnetic**
- **Stereo** Play (TWS)
- **Build** in Lithium battery with 3.7V, 400mAh
- **Bluetooth:** version 5.1
- **Range:** up to 10 m
- **Input power:** 5V / 1A
- **Frequency band:** 2402–2480 MHz
- **Maximal radio** frequency effect: < 2 dBm

FCC statement

This device complies with part 15 of the FCC rules. Operation is subject to the following two conditions:

1. This device may not cause harmful interference and
2. This device must accept any interference received, including interference that may cause undesired operation.

Important: Changes or modifications to this product not authorized could void the FCC compliance and negate your authority to operate the product.

NOTE: This equipment has been tested and found to comply with the limits for a Class B digital device, pursuant to part 15 of the FCC Rules. These limits for a signed to provide reasonable protection against harmful interference in a residential installation. This equipment generates uses and can radiate radio frequency energy

and, if not installed and used in accordance with the instructions, may cause harmful interference to radio communications.

However, there is no guarantee that interference will not occur in a particular installation. If this equipment does cause harmful interference to radio or television reception, which can be determined by turning the equipment off and on, the user is encouraged to try to correct the interference by one or more of the following measures:

- Reorient or relocate the receiving antenna.
- Increase the separation between the equipment and receiver.
- Connect the equipment into an outlet on a circuit different from that to which the receiver is connected.
- Consult the dealer or an experienced radio / TV technician for help.

FCC Radiation Exposure Statement: This equipment complies with FCC radiation exposure limits set forth for an uncontrolled environment. This equipment should be installed and operated with minimum distance 20cm between the radiator & your body.


FCC ID: 2ACVC-ALIGHT

Safety and maintenance instructions

1. Please read this operation manual carefully before use.
 2. The safety and maintenance instructions in this operation manual should be retained for future reference and must be followed at all times.
 3. Keep the product away from heat sources such as radiators, heaters or other appliances that produce heat.
 4. Place the speakers in a stable position to avoid fall and cause damage or personal injury.
 5. Do not expose the product to direct sunlight for longer periods. High temperatures may shorten the life of the product, destroy the battery and distort certain plastic parts.
 6. Do not expose the product to extreme cold as it may damage the internal circuit board.
 7. Rechargeable batteries have a limited number of charge cycles. Battery life and number of charge cycles varies by use and settings.
 8. Avoid liquids getting into the product.
 9. Before wiping with a dry cloth to clean the speakers, set the power switch to the off position and unplug the power cord from the power outlet.
 10. Do not throw with or stamp on the product. This may damage the internal circuit board.
 11. Do not try to disassemble the product. This must only be done by a professional.
 12. Do not use concentrated chemical products or detergent to clean the product.
 13. Keep the surface away from sharp things, as these may cause damage to the plastic parts.
 14. Use 5V / 1A power supplies only. The connection of power supplies with higher voltage may lead to severe damage.
 15. Do not arbitrarily discard or place the lithium battery near fire or intense heat in order to avoid a risk of explosion.
-
- If you do experience any problems with your product please contact the retailer you purchased the product from.
 - The retailer will provide you with guidance and if that does not solve the problem, the retailer will handle the claim directly with Kreafunk.
 - **Kreafunk ApS**
 - **Klamsagervej 35A, st.**

- 8230 Aabyhoej
- Denmark
- www.Kreafunk.com
- info@Kreafunk.dk
- +45 96 99 00 20

Documents / Resources

	<p>kreafunk aLIGHT LED Battery Light and Bluetooth Speaker [pdf] Instruction Manual aLIGHT, aLIGHT LED Battery Light and Bluetooth Speaker, LED Battery Light and Bluetooth Speaker, Battery Light and Bluetooth Speaker, Light and Bluetooth Speaker, Bluetooth Speaker, Speaker</p>
---	---

References

-  [Kreafunk | Stilfuldt dansk design med fantastisk lyd](#)
-  [Declaration of conformity – Kreafunk](#)