



KREAFUNK aCUBE Pocket-Sized Bluetooth Speaker User Manual

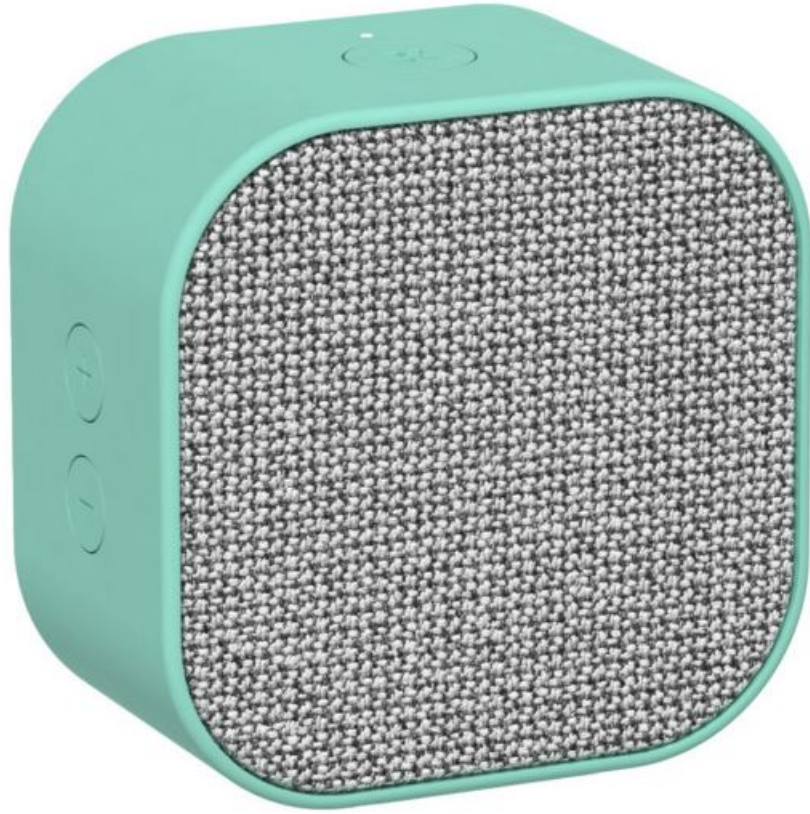
[Home](#) » [KREAFUNK](#) » KREAFUNK aCUBE Pocket-Sized Bluetooth Speaker User Manual 

Contents

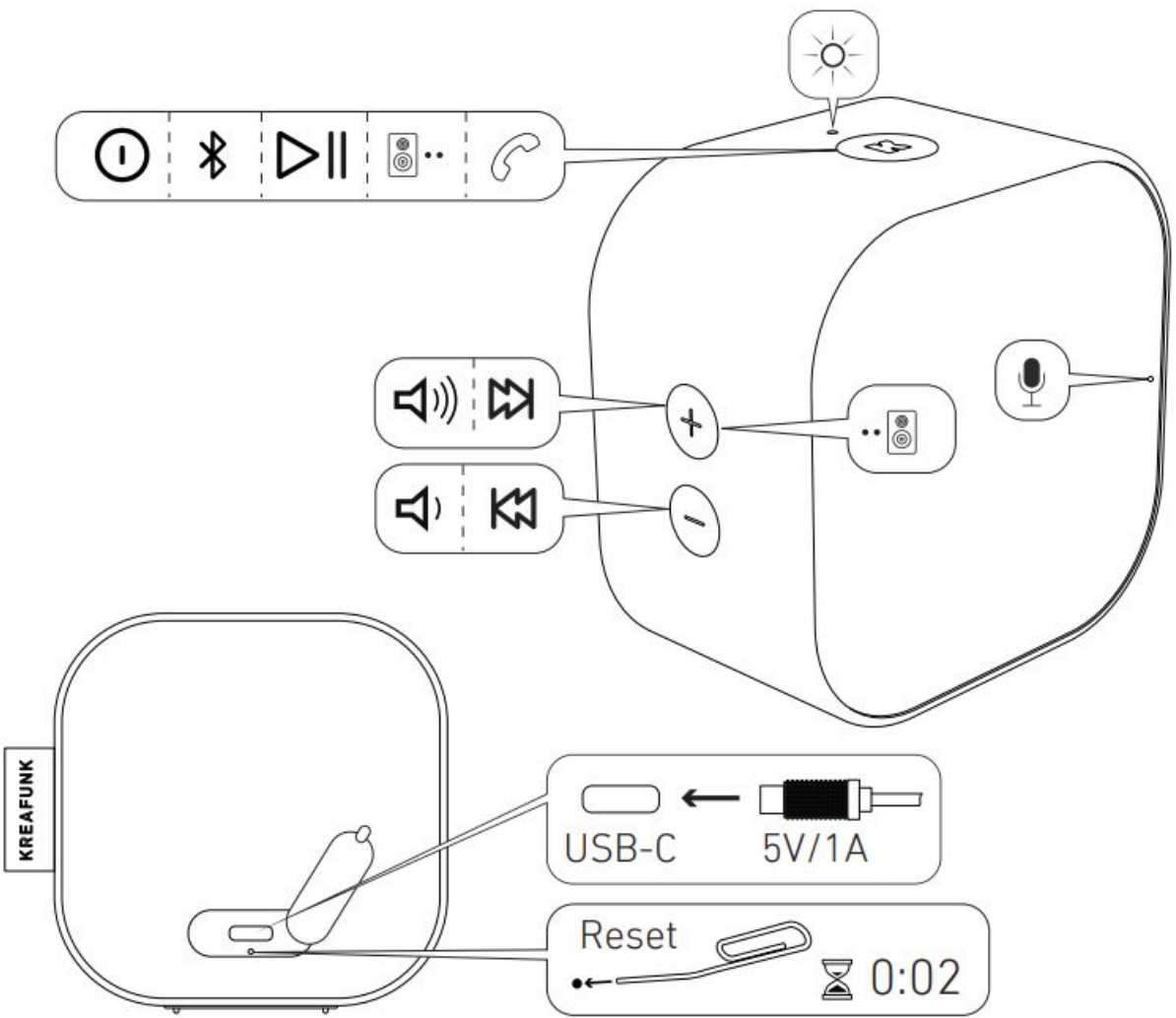
- [1 KREAFUNK aCUBE Pocket-Sized Bluetooth Speaker](#)
- [2 OVERVIEW](#)
- [3 ON/OFF](#)
- [4 LISTEN VIA BLUETOOTH](#)
- [5 MANUAL BLUETOOTH PAIRING](#)
- [6 MULTI-FUNCTION BUTTON](#)
- [7 CHARGING](#)
- [8 TRUE WIRELESS STEREO \(TWS\)](#)
- [9 CHANGE VOLUME, CHANGE TRACK](#)
- [10 PHONE](#)
- [11 FCC STATEMENT](#)
- [12 SAFETY AND MAINTENANCE INSTRUCTIONS](#)
- [13 Documents / Resources](#)
- [14 Related Posts](#)

KREAFUNK

KREAFUNK aCUBE Pocket-Sized Bluetooth Speaker

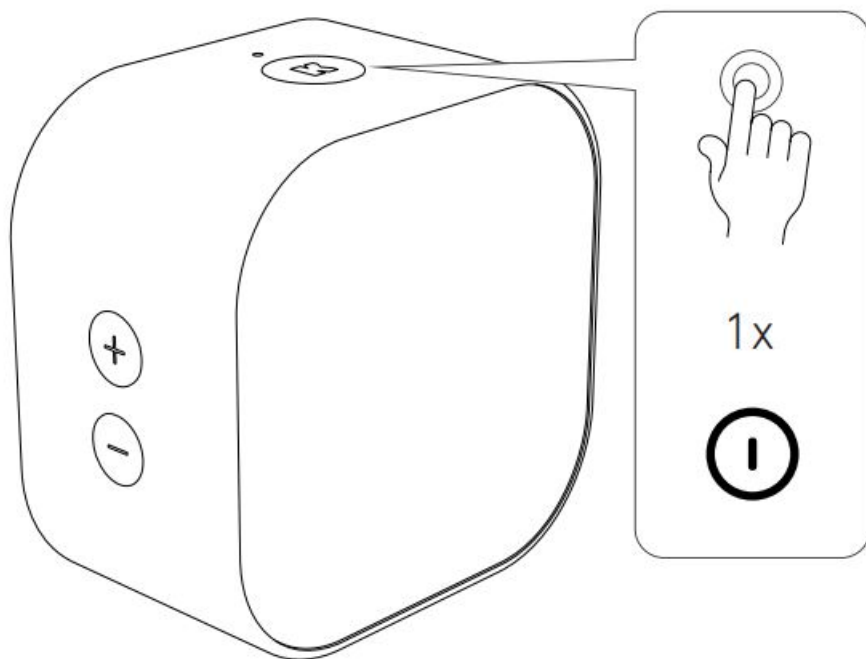


OVERVIEW



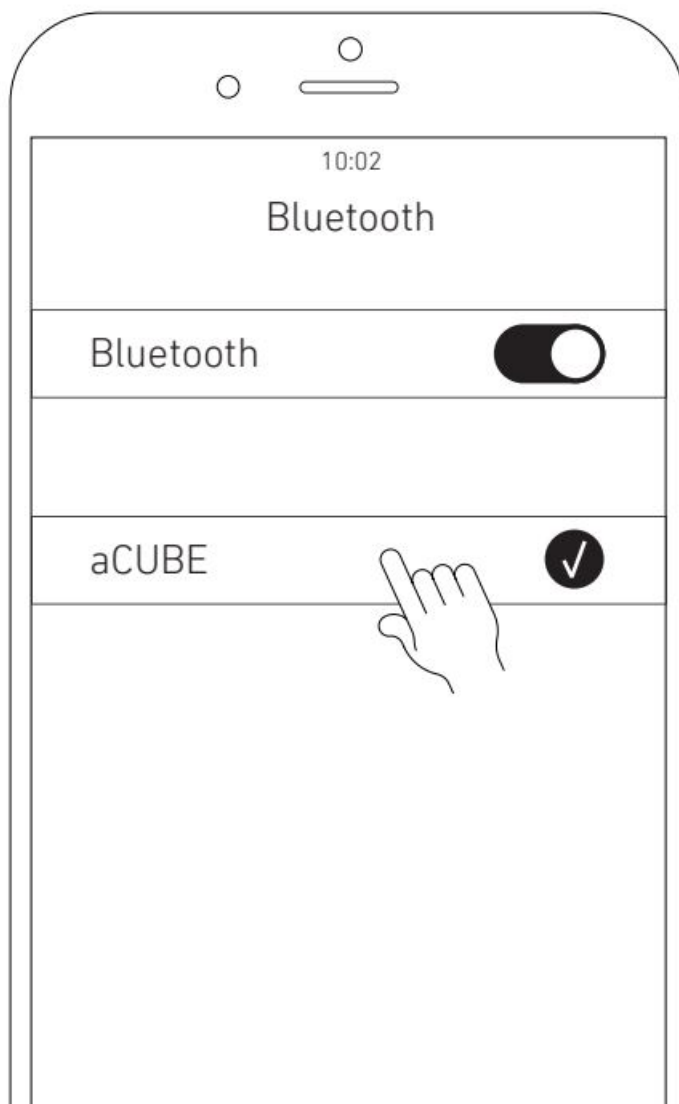
ON/OFF

①

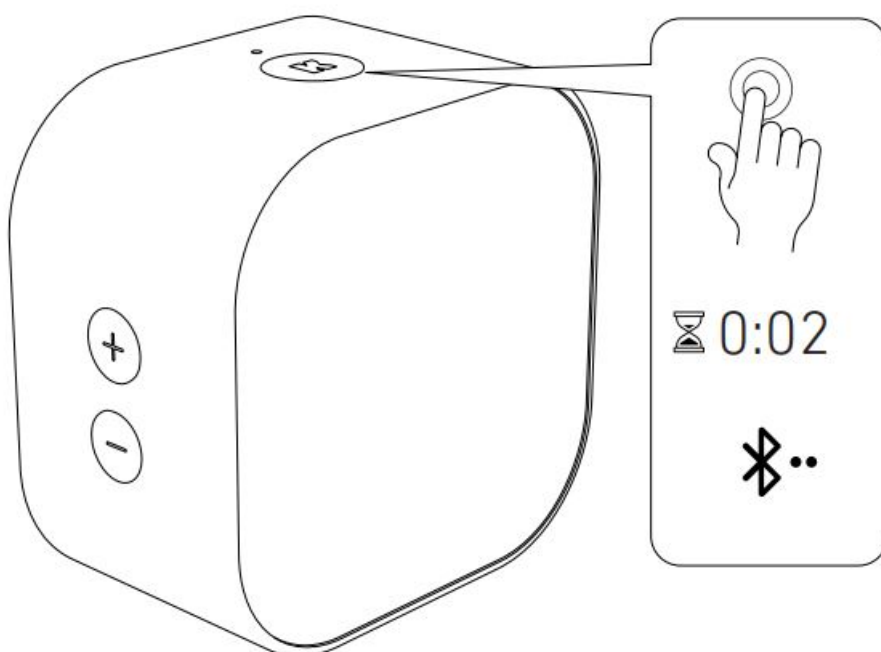


LISTEN VIA BLUETOOTH

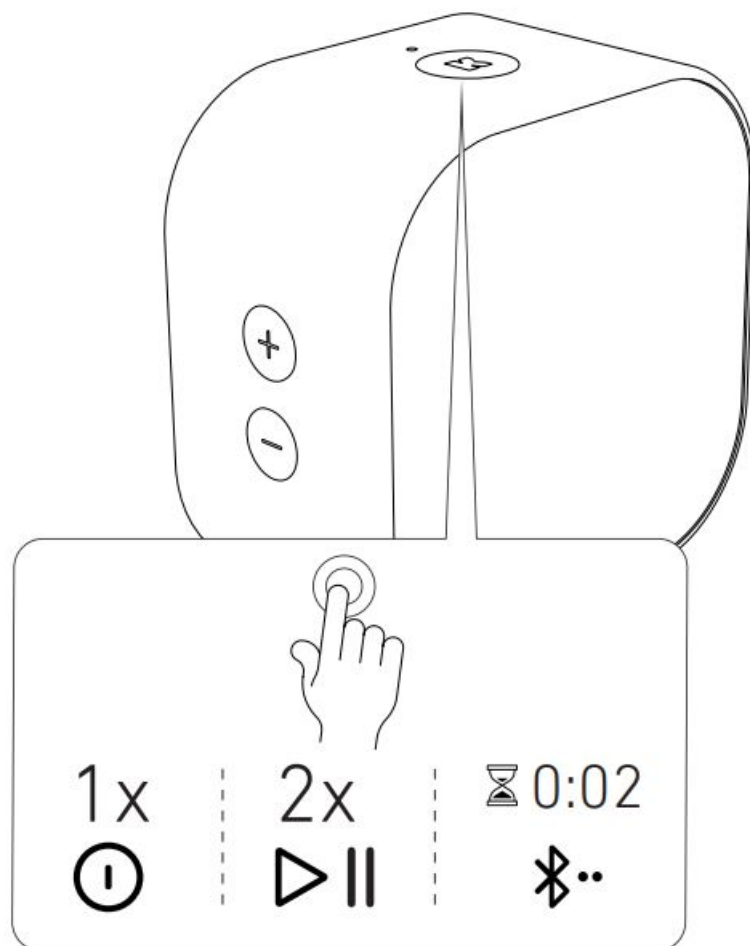
②



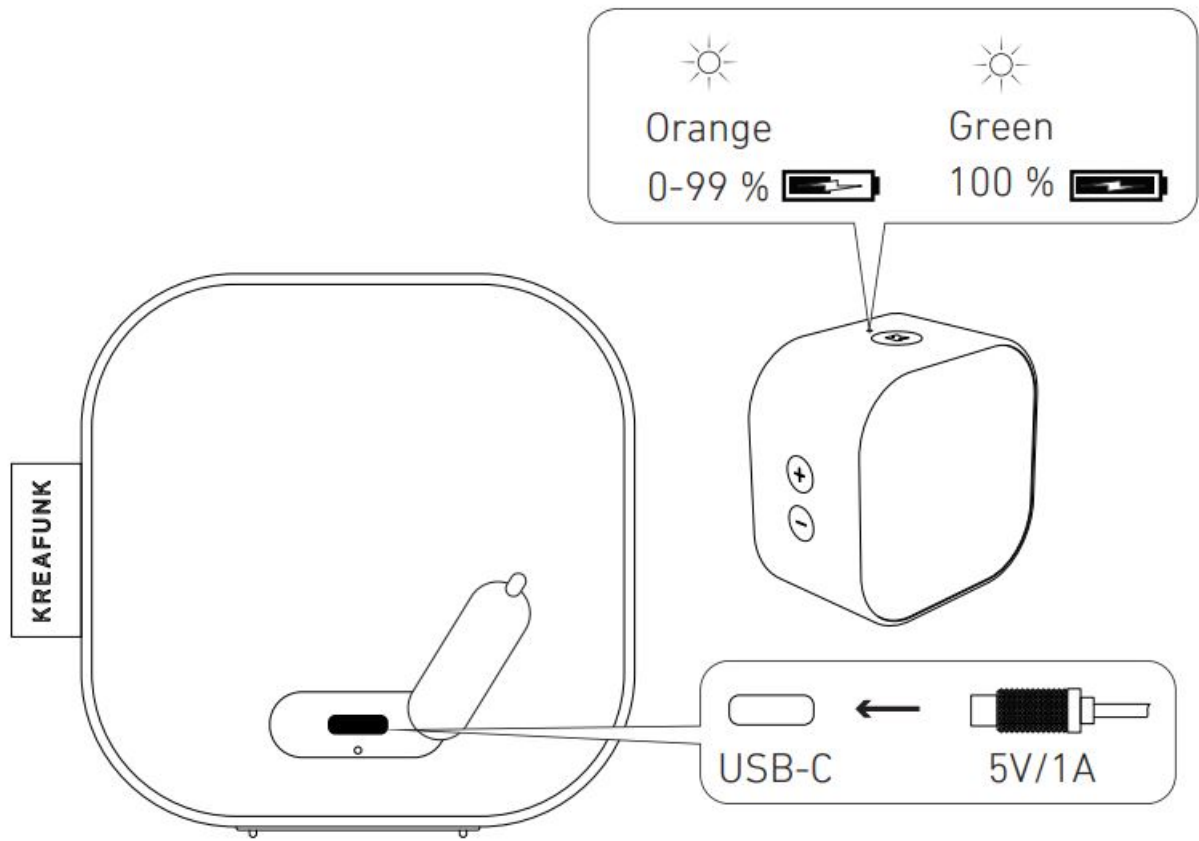
MANUAL BLUETOOTH PAIRING



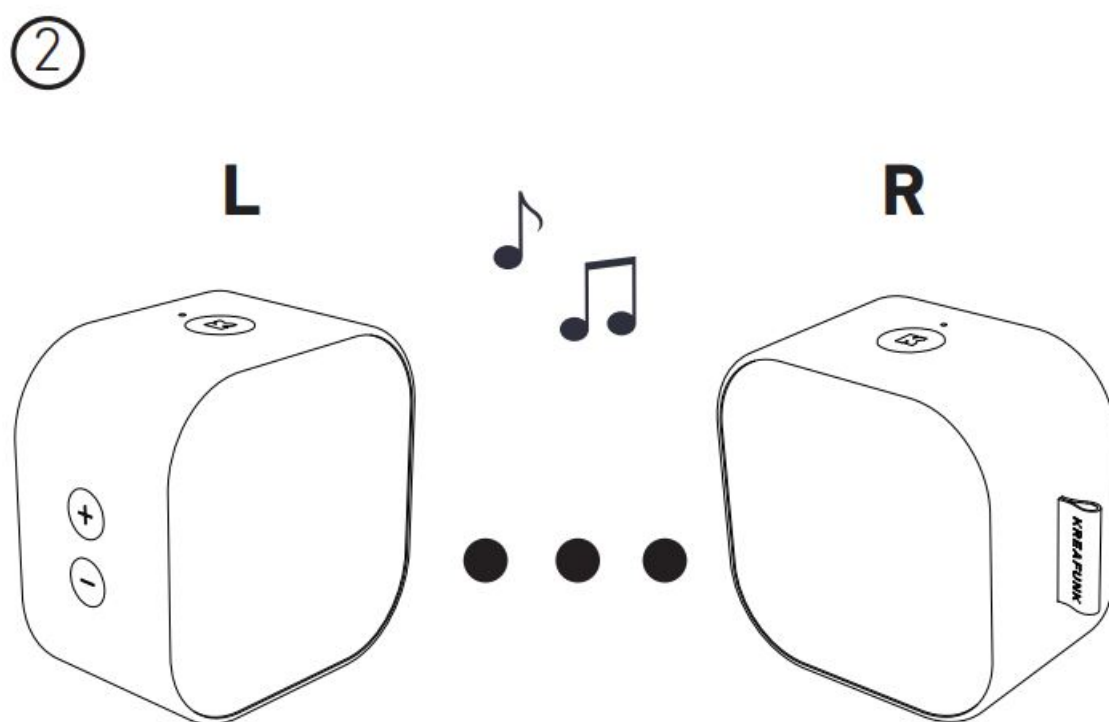
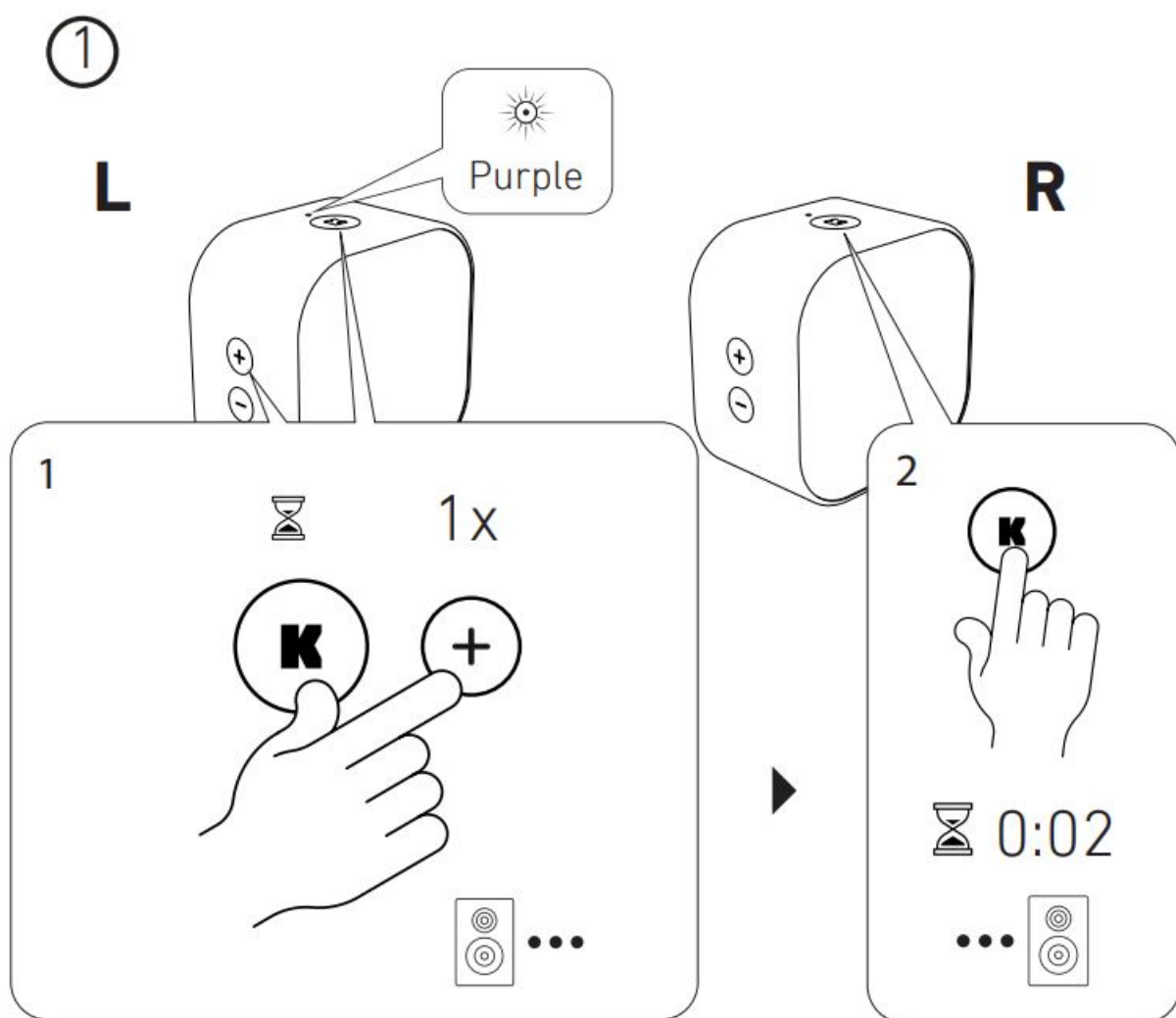
MULTI-FUNCTION BUTTON



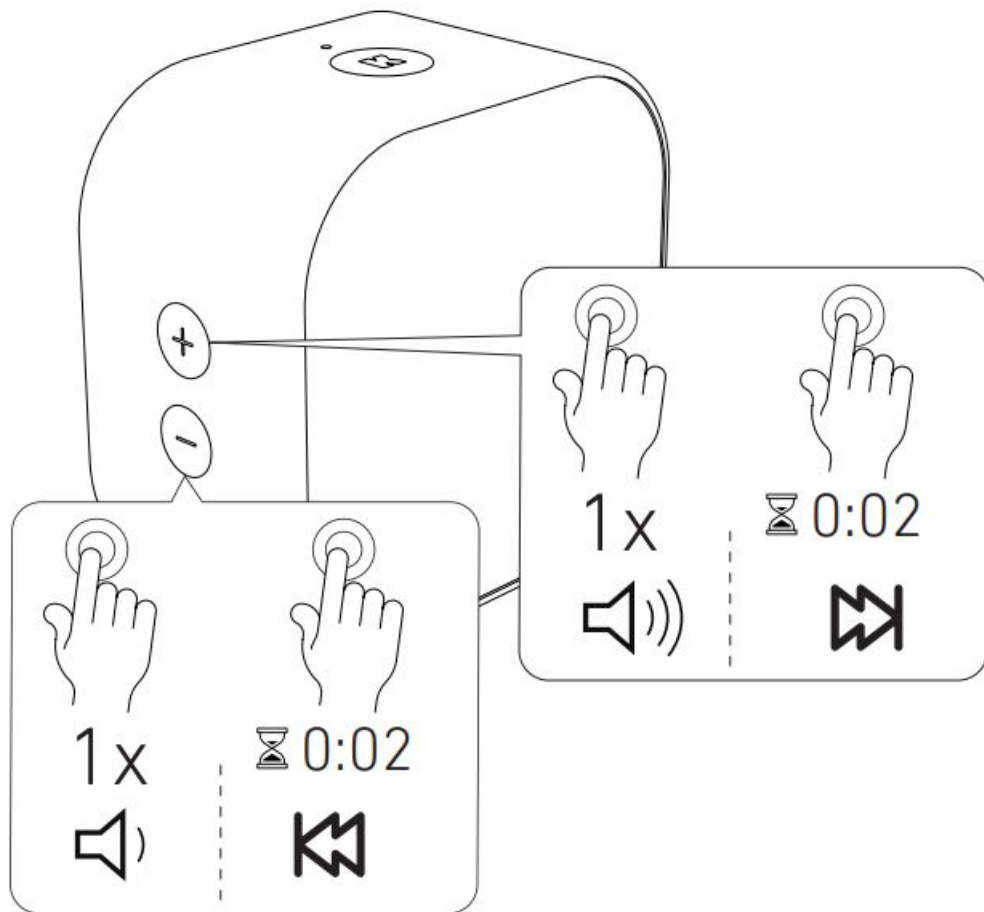
CHARGING



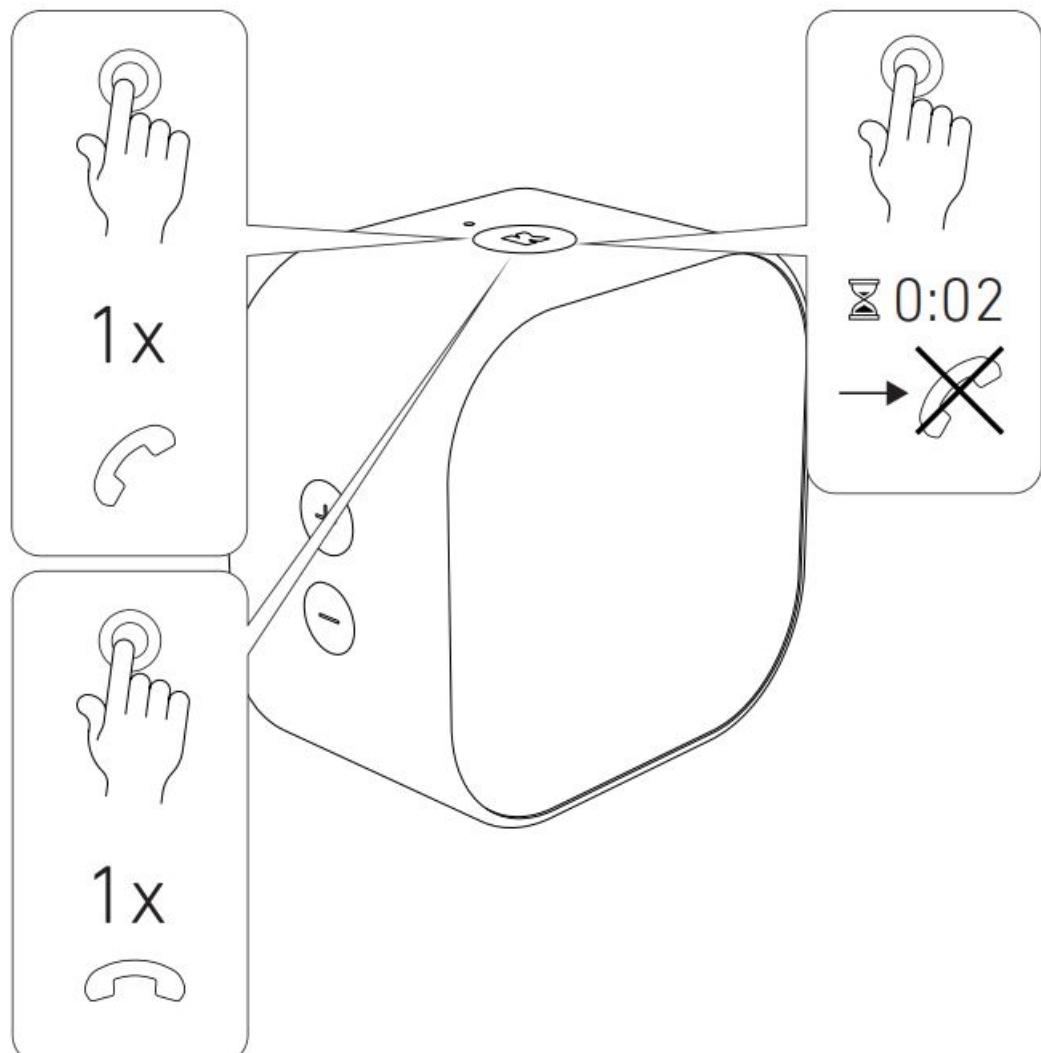
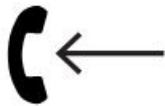
TRUE WIRELESS STEREO (TWS)



CHANGE VOLUME, CHANGE TRACK



PHONE



FCC STATEMENT

This device complies with part 15 of the FCC rules. Operation is subject to the following two conditions:

1. This device may not cause harmful interference and
2. This device must accept any interference received, including interference that may cause undesired operation.

Important: Changes or modifications to this product not authorized could void the FCC compliance and negate your authority to operate the product.

NOTE: This equipment has been tested and found to comply with the limits for a Class B digital device, pursuant to part 15 of the FCC Rules. These limits are designed to provide reasonable protection against harmful interference in a residential installation. This equipment generates uses and can radiate radio frequency energy and, if not installed and used in accordance with the instructions, may cause harmful interference to radio communications.

However, there is no guarantee that interference will not occur in a particular installation. If this equipment does cause harmful interference to radio or television reception, which can be determined by turning the equipment off and on, the user is encouraged to try to correct the interference by one or more of the following measures:

1. Reorient or relocate the receiving antenna.
2. Increase the separation between the equipment and receiver.


3. Connect the equipment into an outlet on a circuit different from that to which the receiver is connected.
4. Consult the dealer or an experienced radio / TV technician for help.

SAFETY AND MAINTENANCE INSTRUCTIONS

1. Please read this operation manual carefully before use.
2. The safety and maintenance instructions in this operation manual should be retained for future reference and must be followed at all times.
3. Keep the product away from heat sources such as radiators, heaters or other appliances that produce heat.
4. Do not expose the product to direct sunlight for longer periods. High temperatures will shorten the life of the product, destroy the battery and distort certain plastic parts.
5. Do not expose the product to extreme cold as it may damage the internal circuit board.
6. Avoid liquids getting into the product.
7. Do not throw with or stamp on the product. This may damage the internal circuit board.
8. Do not try to disassemble the product. This must only be done by a professional.
9. Do not use concentrated chemical products or detergent to clean the product.
10. Keep the surface away from sharp things, as these may cause damage to the plastic parts.
11. Use 5V / 1A power supplies only. The connection of power supplies with higher voltage may lead to severe damage.
12. Do not arbitrarily discard or place the lithium battery near fire or intense heat in order to avoid a risk of explosion.

If you do experience any problems with your product please contact the retailer you purchased the product from. The retailer will provide you with guidance and if that does not solve the problem, the retailer will handle the claim directly with KREAFUNK.

Documents / Resources

| | |
|--|---|
|  <p>aCUBE Pocket-Sized Bluetooth Speaker</p> <p>KREAFUNK 2011</p> | <p>KREAFUNK aCUBE Pocket-Sized Bluetooth Speaker [pdf] User Manual</p> <p>ACUBE, 2ACVC-ACUBE, 2ACVCACUBE, aCUBE Pocket-Sized Bluetooth Speaker, aCUBE, Pocket-Sized Bluetooth Speaker</p> |
|--|---|