



[Home](#) » [KREAFUNK](#) » **Kreafunk aCAPPELLA Wheat Bluetooth Speaker User Manual** 

Contents [[hide](#)]

- [1 Kreafunk aCAPPELLA Wheat Bluetooth Speaker](#)
- [2 Overview](#)
- [3 Charging](#)
- [4 Battery status](#)
- [5 Manual Bluetooth pairing](#)
- [6 Listen via Bluetooth](#)
- [7 Technical specifications](#)
- [8 FCC statement](#)
- [9 Safety and maintenance instructions](#)
- [10 Documents / Resources](#)
 - [10.1 References](#)



Kreafunk aCAPPELLA Wheat Bluetooth Speaker

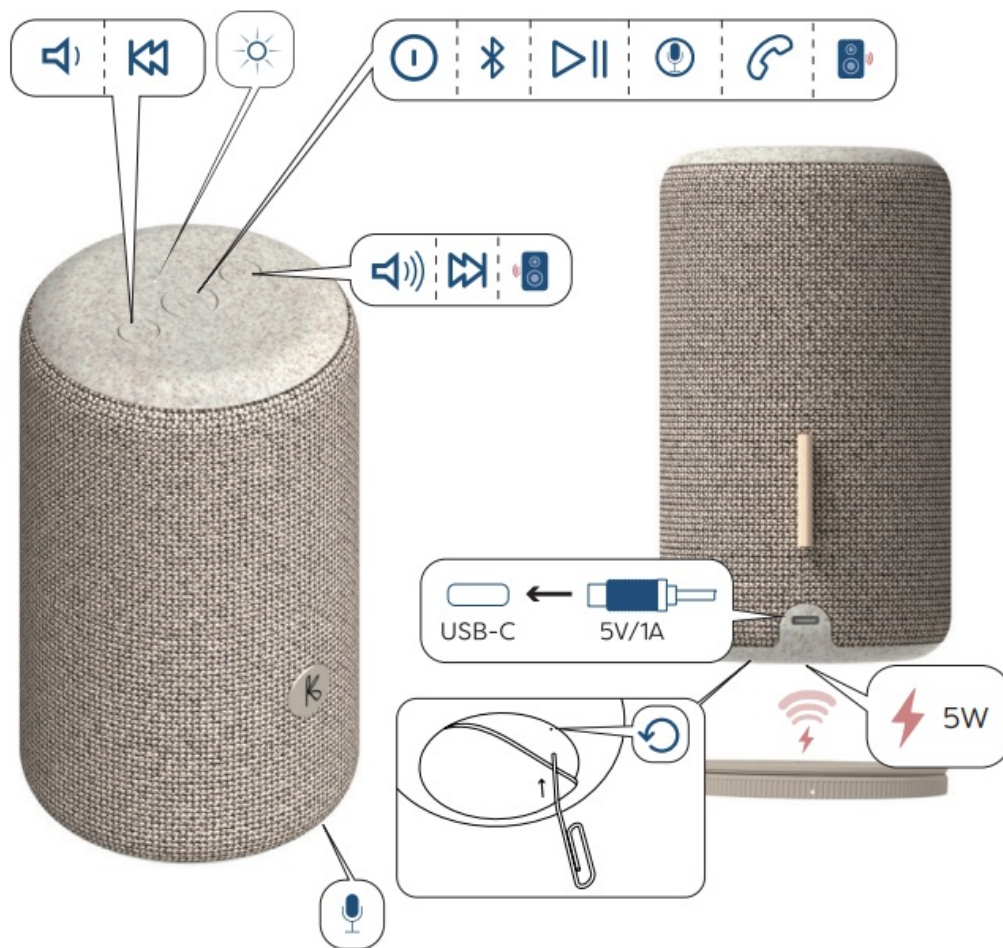


Wheat

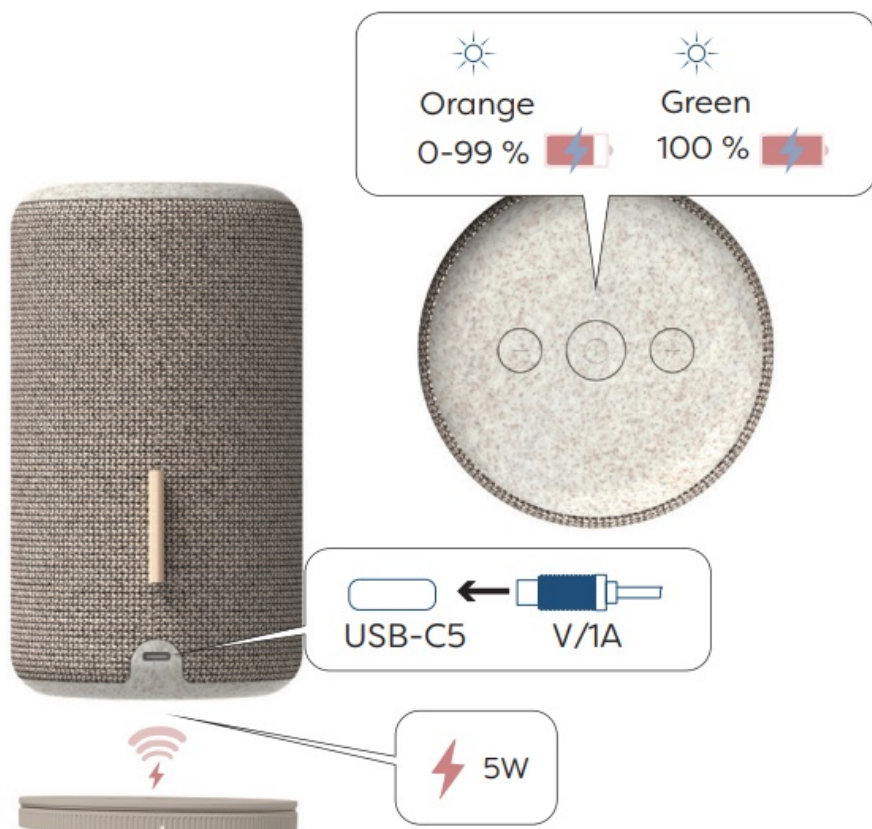
Find your plates and bowls. There's oatmeal and pasta inside. Okay, there's no actual pasta or oats in this box. We are just big on sustainable thinking, and that's why the Kreafunk care range is a tribute to just that. All Kreafunk products are made of a sustainable material, where 35% plastic is replaced by wheat fibres, and the remaining 65% is nothing less than 100% recycled plastic. Pretty great, right? We say yes, but we still haven't told you what pasta's got to do with anything. Sorry, wheat fibres are, simply put, a by-product of wheat straws. You know, the edible grain used all over this remarkable planet to make the foods we love, such as flour, bread, pasta, and oatmeal. Oh, and Danish pastries. So, technically, we weren't lying. There's pasta and oats inside. Enough about food; we're thoroughly proud to dream of a more sustainable future and do something about it. We hope you'll love your new Kreafunk care product.

This product is in compliance with the essential requirements and other relevant provisions of Directive 2014/53/EU. The declaration of conformity may be consulted at: <https://Kreafunk.com/pages/declaration-of-conformity> Made from recycled materials

Overview



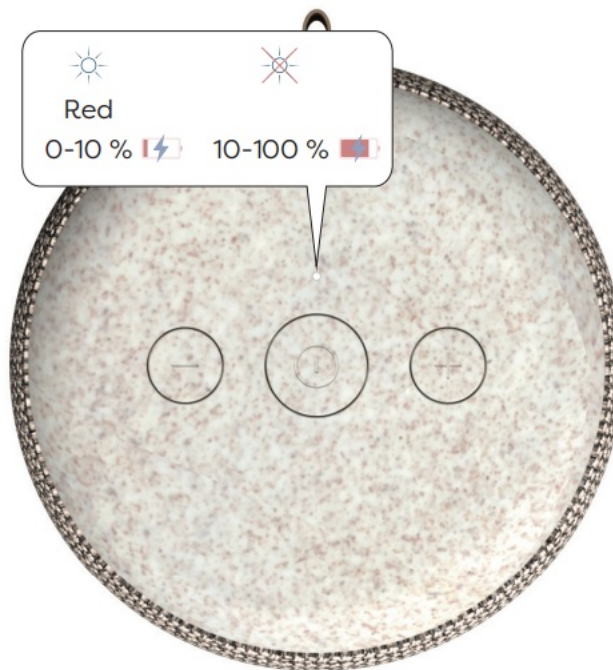
Charging



We recommend that you charge your aCAPPELLA Wheat to 100% before using it the

first time. There is a charging cable in the box. You can charge it wirelessly or with a USB-C cable. The small light will turn orange when charging and green when it's fully charged.

Battery status

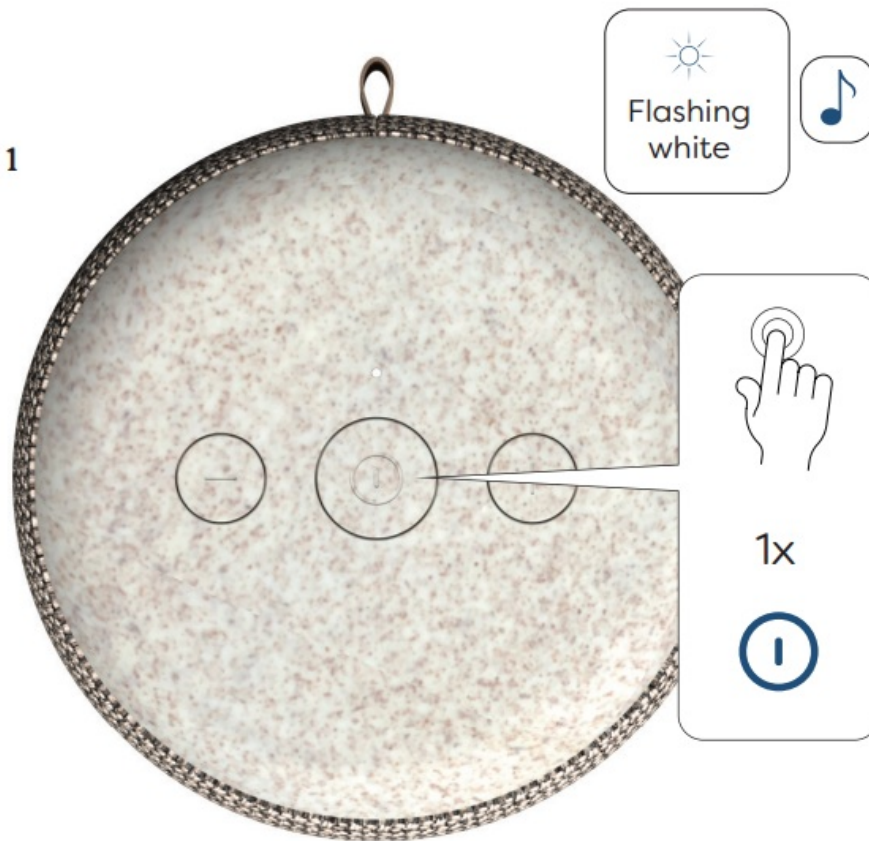


- The battery indicator is located on the top of the aCAPPELLA Wheat. The small light will turn red when the battery level drops below 10%

On/off

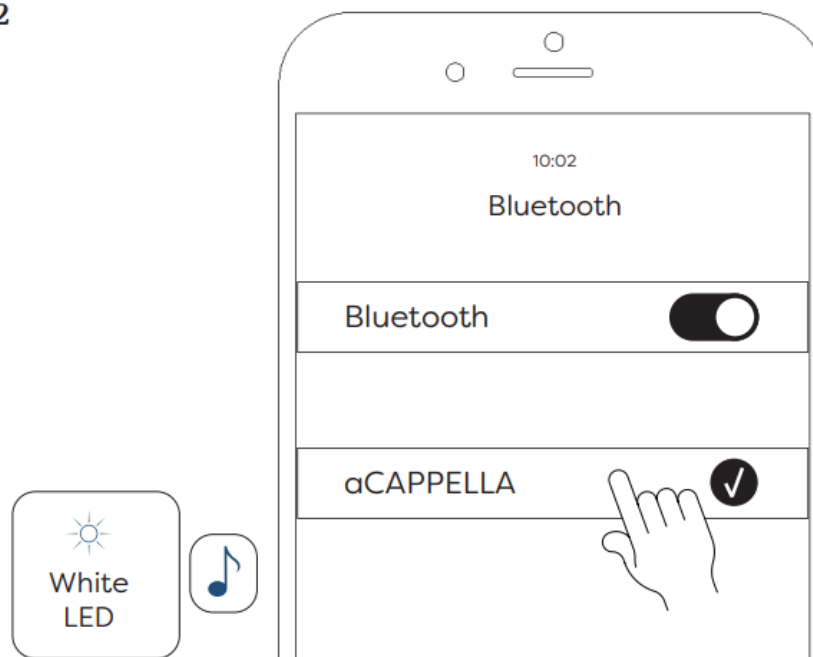
- Press the power button to turn on the aCAPPELLA Wheat. When it's on, the small light will start blinking.

Step 1



Listen via Bluetooth

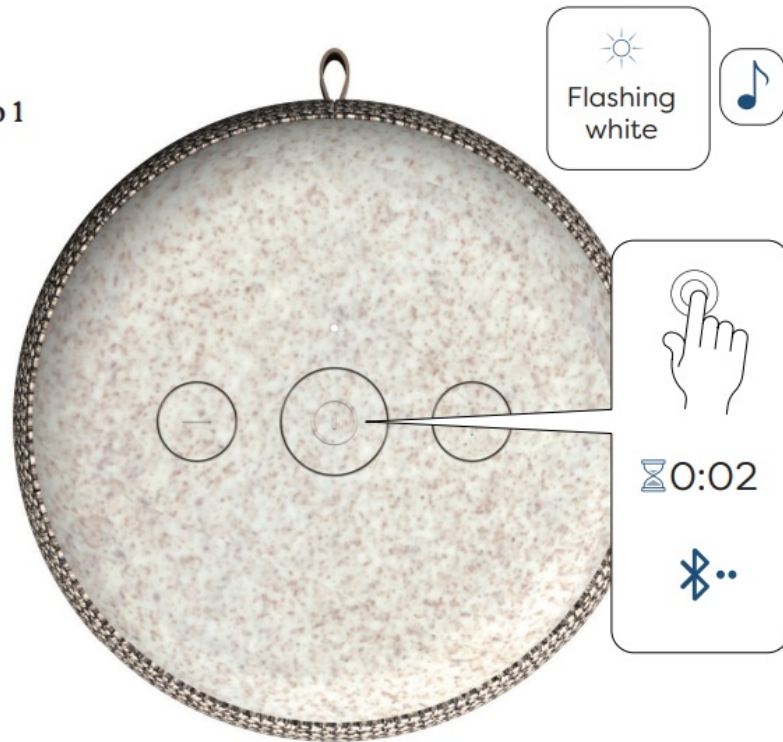
Step 2



- Find a cappella Wheat in the Bluetooth list (in settings). When the light is blinking, the device is in Bluetooth pairing mode. The light will be solid white when connected to a CAPPELLA Wheat.

Manual Bluetooth pairing

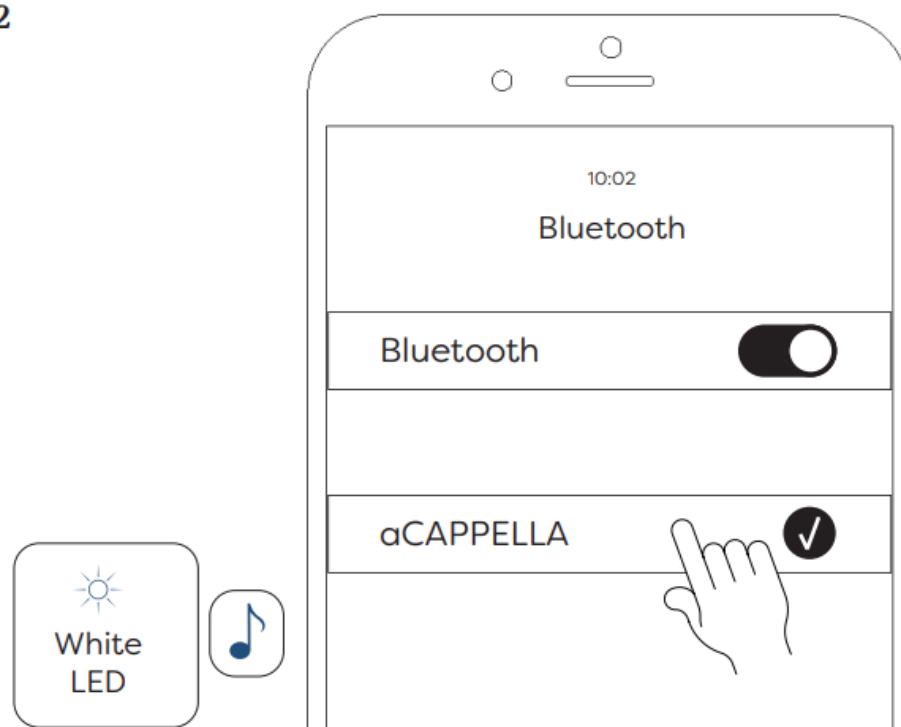
Step 1



- To manually connect the aCAPPELLA Wheat to Bluetooth, press and hold the power button for 2 seconds. When the light blinks, the device is in Bluetooth pairing mode.

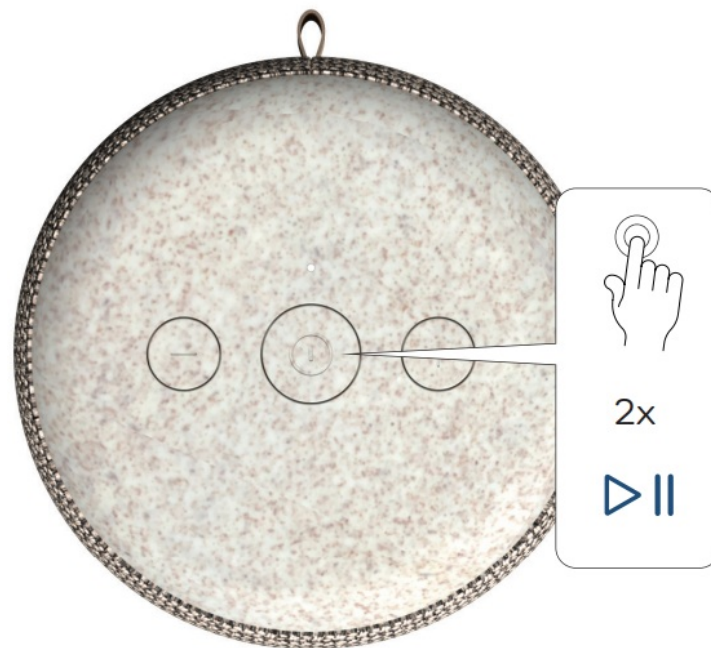
Listen via Bluetooth

Step 2



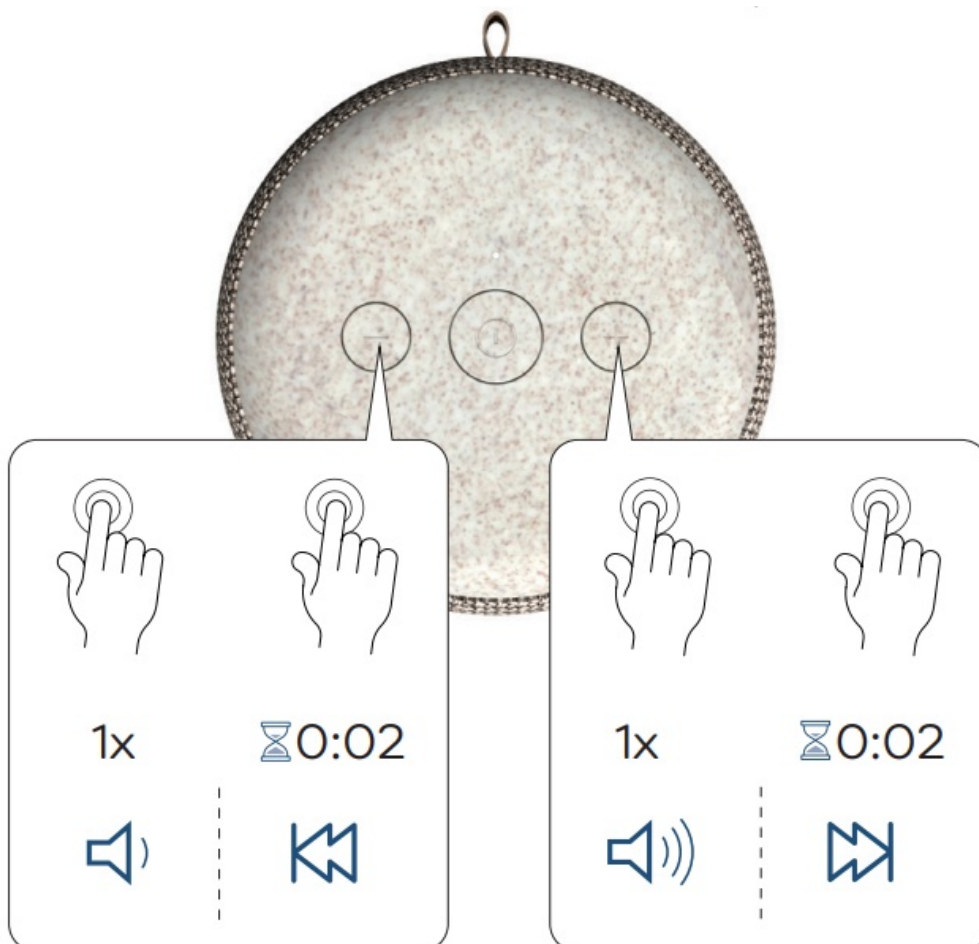
- Find aCAPPELLA Wheat in the Bluetooth list (in settings). When the light is blinking, the device is in Bluetooth pairing mode. The light will be solid white when connected to aCAPPELLA Wheat.

Play/pause



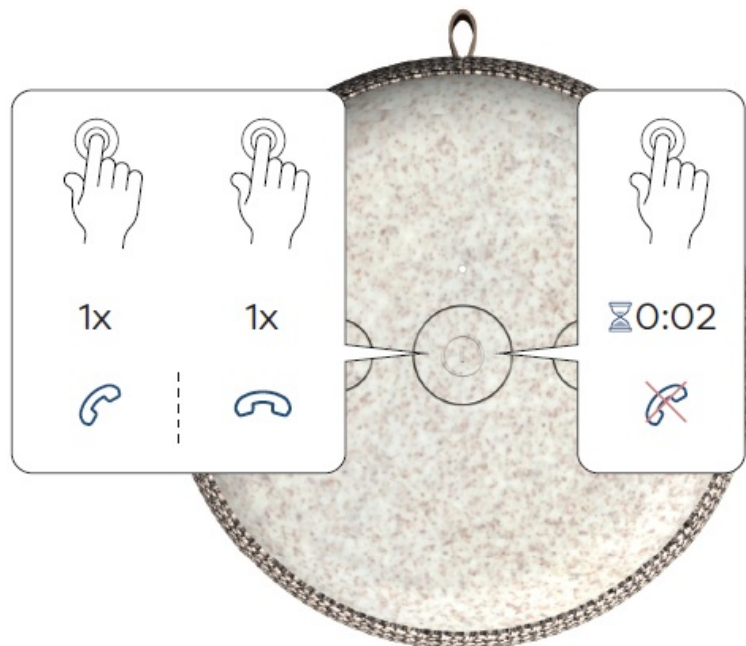
- Simply press the power button twice to play or pause audio on the a CAPPELLA Wheat.

Change volume, change track



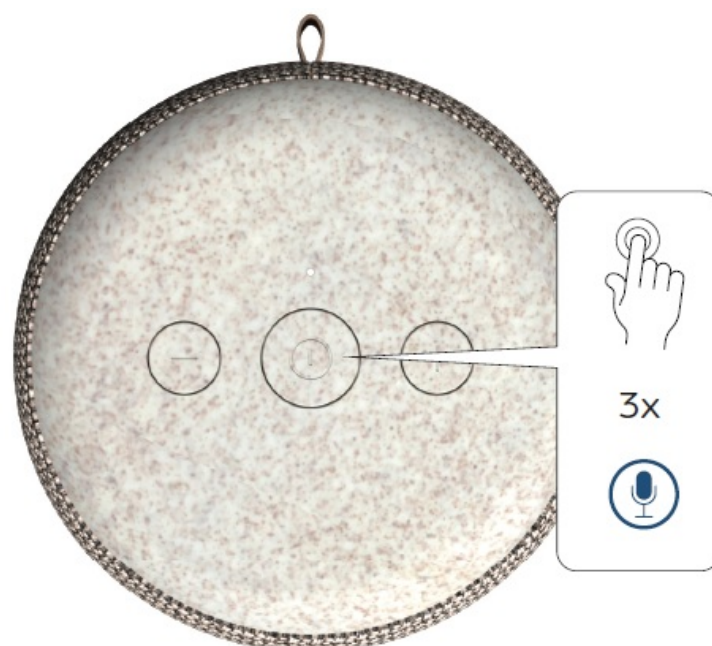
- Press the plus or minus button to adjust the volume. To skip tracks, press and hold the plus or minus button for 2 seconds.

Phone



- Press the power button once to answer or end a call. Hold the power button down for 2 seconds to reject a call.

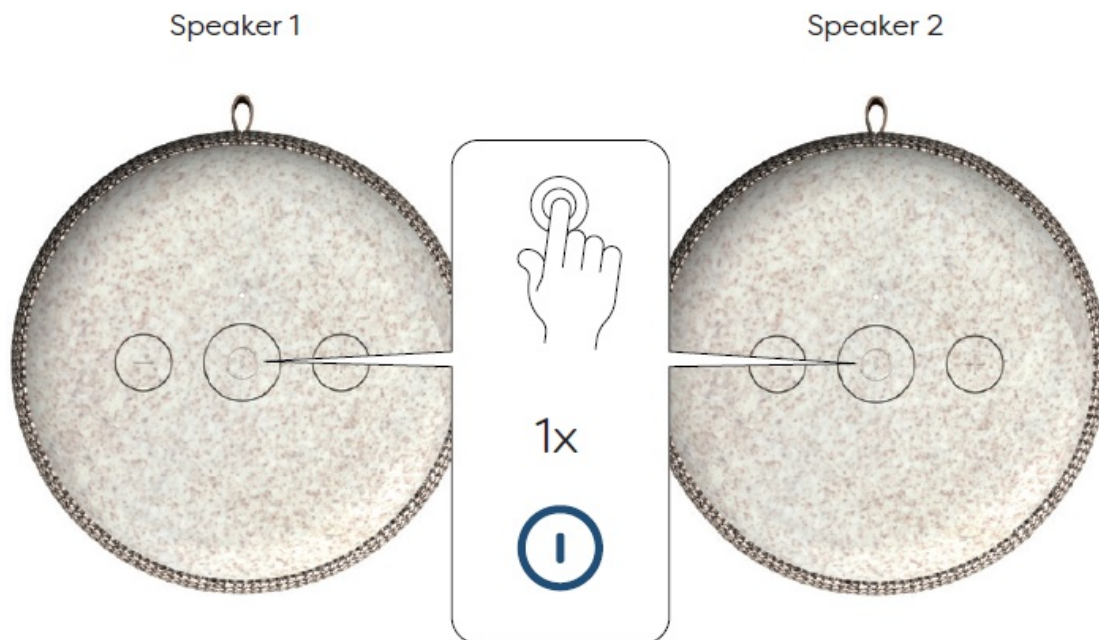
Voice assistant



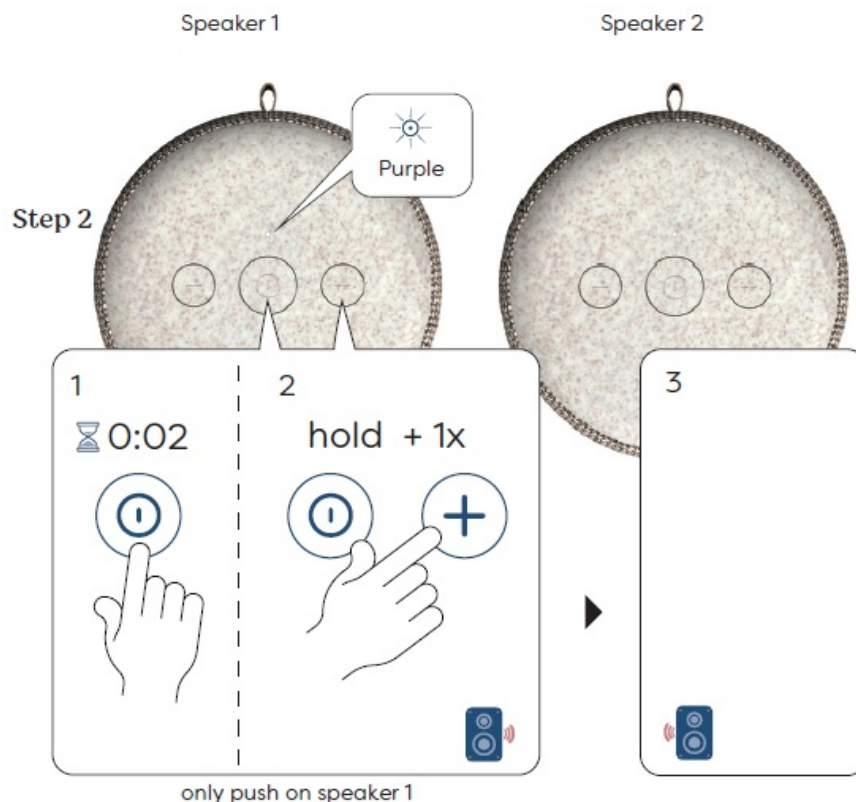
- To activate Voice Assistance, press the power button three times.

Stereo play (TWS)

Step 1



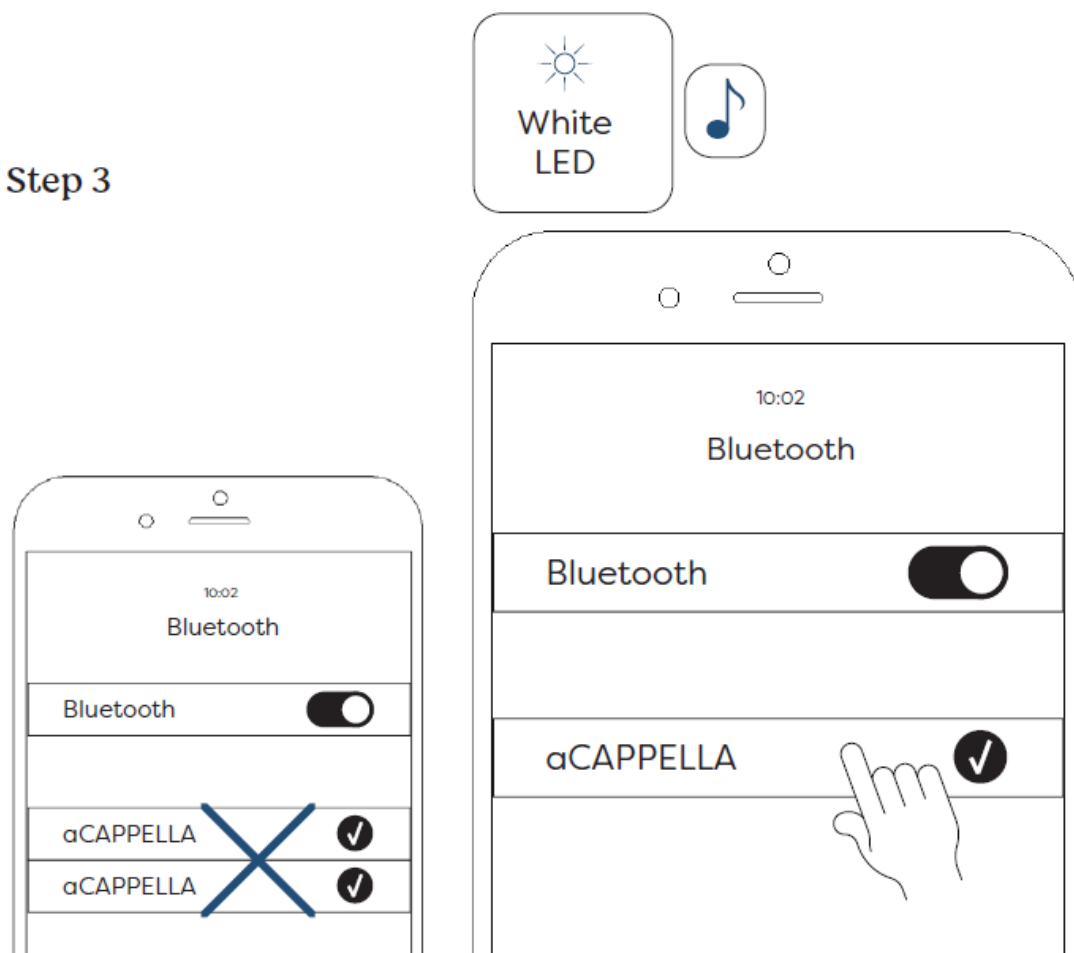
- To activate Stereo Play, delete your aCAPPELLA Wheat from Bluetooth, then press the power button once on both speakers.



- Press and hold the power button until the speaker make a sound. Keep holding it, press the plus button once, then release both buttons. The small light will change

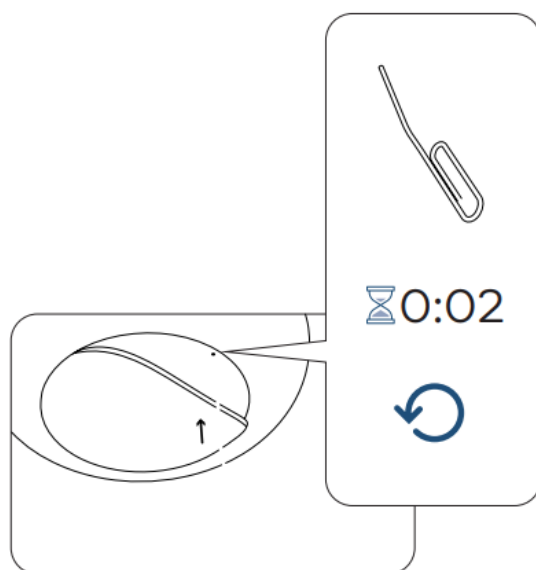
colour to purple.

Step 3



- Only one a cappella Wheat should be visible when connecting to Bluetooth. If two are visible, something went wrong and you should try again.

Reset



- Delete aCAPPELLA Wheat from Bluetooth, remove the silicone base, and insert a

paperclip or similar into the hole to reset the speaker.

Technical specifications

- 100% recycled ABS plastic and wheat fibre mix
- 98% recycled polyester (fabric)
- Water-resistant (IPX5)
- Dimensions: 92*164 mm (Ø*H)
- Weight: 650g
- Speaker: Ø66 mm 4Ω 15W
- Playing time: up to 30 hours
- Charging time: 4 hours (USB) / 8-9 hours (Qi)
- Supports Qi wireless charging
- USB-C cable included
- Stereo Play (TWS)
- Voice Assistant
- Built-in Lithium battery with 7.4V, 2200mAh
- Bluetooth: version 5.0
- Range: up to 10 m
- Input power: 5V / 1A
- Frequency band: 2402–2480 MHz
- Maximal radio frequency effect: <3 dBm

FCC statement

This device complies with part 15 of the FCC rules. The operation is subject to the following two conditions:

1. This device may not cause harmful interference and
2. This device must accept any interference received, including interference that may cause undesired operation.

Important: Changes or modifications to this product not authorized could void the FCC compliance and negate your authority to operate the product.

NOTE: This equipment has been tested and found to comply with the limits for a Class B

digital device, pursuant to part 15 of the FCC Rules. These limits for a signed to provide reasonable protection against harmful interference in a residential installation. This equipment generates uses and can radiate radio frequency energy and, if not installed and used in accordance with the instructions, may cause harmful interference to radio communications. However, there is no guarantee that interference will not occur in a particular installation. If this equipment does cause harmful interference to radio or television reception, which can be determined by turning the equipment off and on, the user is encouraged to try to correct the interference by one or more of the following measures:

- Reorient or relocate the receiving antenna.
- Increase the separation between the equipment and receiver.
- Connect the equipment into an outlet on a circuit different from that to which the receiver is connected.
- Consult the dealer or an experienced radio / TV technician for help.

FCC Radiation Exposure Statement: This equipment complies with FCC radiation exposure limits set forth for an uncontrolled environment. This equipment should be installed and operated with a minimum distance 20cm between the radiator & your body.
FCC ID: 2ACVC-ACAPPELLA

Safety and maintenance instructions

1. Please read this operation manual carefully before use.
2. The safety and maintenance instructions in this operation manual should be retained for future reference and must be followed at all times.
3. Keep the product away from heat sources such as radiators, heaters or other appliances that produce heat.
4. Place the speakers in a stable position to avoid falls and cause damage or personal injury.
5. Do not expose the product to direct sunlight for longer periods. High temperatures may shorten the life of the product, destroy the battery, and distort certain plastic parts.
6. Do not expose the product to extreme cold, as it may damage the internal circuit board.
7. CAPPELLA Wheat shouldn't be left in your car. Especially not in the sunlight.

8. Do not charge in direct sunlight. aCappella Wheat can operate and charge from -20 to 60 degrees Celsius.
9. Rechargeable batteries have a limited number of charge cycles. Battery life and number of charge cycles varies by use and settings.
10. Avoid liquids from getting into the product.
11. Before wiping with a dry cloth to clean the speakers, set the power switch to the off position and unplug the power cord from the power outlet.
12. Do not throw with or stamp on the product. This may damage the internal circuit board.
13. Do not use concentrated chemical products or detergents to clean the product.
14. Keep the surface away from sharp things, as these may cause damage to the plastic parts.
15. Use 5V / 1A power supplies only. The connection of power supplies with higher voltage may lead to severe damage.
16. Do not arbitrarily discard or place the lithium battery near fire or intense heat in order to avoid a risk of explosion.
17. If you do experience any problems with your product, please contact the retailer you purchased the product from. The retailer will provide you with guidance and if that does not solve the problem, the retailer will handle the claim directly with Kreamfunk.
18. Do not try to disassemble the product. This must only be done by a professional.

Kreamfunk ApS Karupvej 68000 Aarhus C Denmark

- www.Kreamfunk.com
- info@Kreamfunk.dk
- +45 96 99 00 20

Documents / Resources

	<p>Kreamfunk aCAPPELLA Wheat Bluetooth Speaker [pdf] User Manual 95x95mm, 2025, aCAPPELLA Wheat Bluetooth Speaker, aCAPPELLA, Wheat Bluetooth Speaker, Bluetooth Speaker, Speaker</p>
---	---

References

- [User Manual](#)

■ KREAFUNK

🔍 2025, 95x95mm, ACAPPELLA, aCAPPELLA Wheat Bluetooth Speaker, Bluetooth Speaker, KREAFUNK, speaker, Wheat Bluetooth Speaker

Leave a comment

Your email address will not be published. Required fields are marked *

Comment *

Name

Email

Website

☐ Save my name, email, and website in this browser for the next time I comment.

Post Comment

Search:

e.g. whirlpool wrf535swhz

Search

[Manuals+](#) | [Upload](#) | [Deep Search](#) | [Privacy Policy](#) | [@manuals.plus](#) | [YouTube](#)

This website is an independent publication and is neither affiliated with nor endorsed by any of the trademark owners. The "Bluetooth®" word mark and logos are registered trademarks owned by Bluetooth SIG, Inc. The "Wi-Fi®" word mark and logos are registered trademarks owned by the Wi-Fi Alliance. Any use of these marks on this website does not imply any affiliation with or endorsement.

