



KRAUSE 916280 Codda Assembly Scaffold Complete Set Instruction Manual

[Home](#) » [KRAUSE](#) » KRAUSE 916280 Codda Assembly Scaffold Complete Set Instruction Manual 

KRAUSE

Instructions for assembly and use

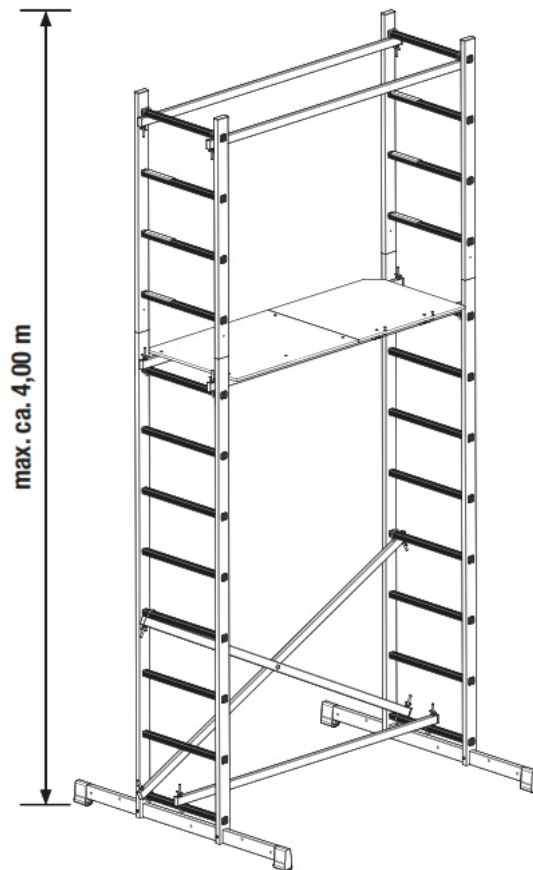


Assembly Scaffold
2.0 © 2023 – 05/2023

Contents

- 1 916280 Codda Assembly Scaffold Complete Set
- 2 Maintenance and servicing
- 3 Documents / Resources
 - 3.1 References

916280 Codda Assembly Scaffold Complete Set



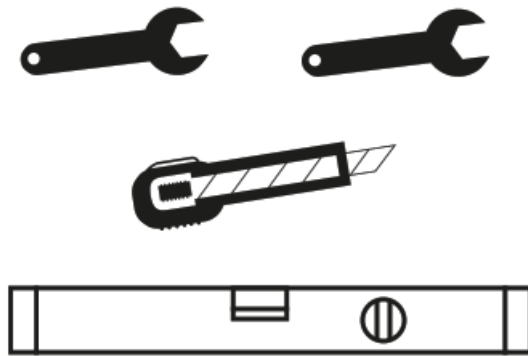
Art.-No. 916280



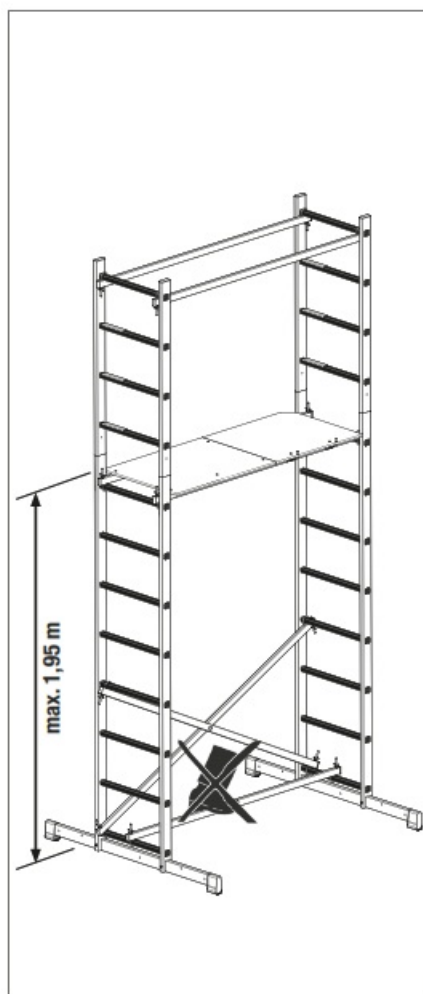
https://www.krause-systems.de/youtube_assembly_montagegeruest



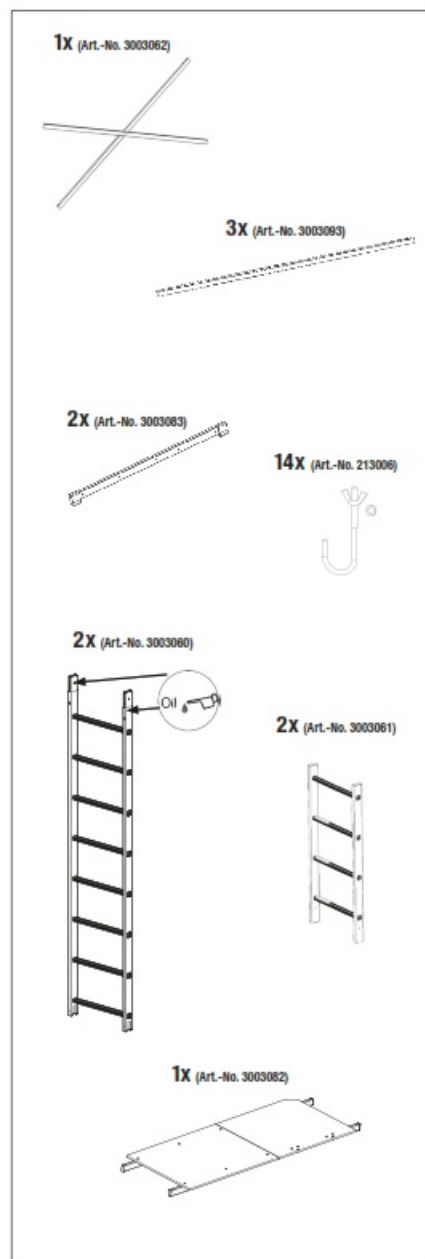
2 x (10 mm)



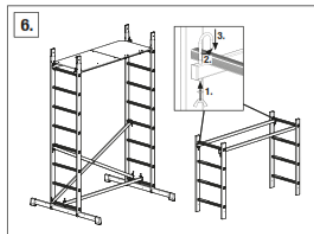
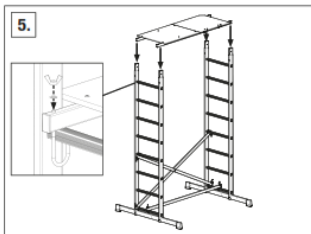
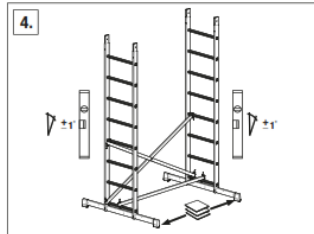
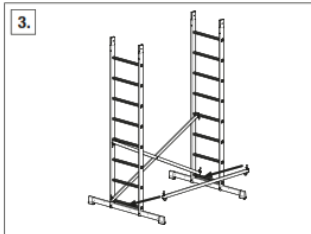
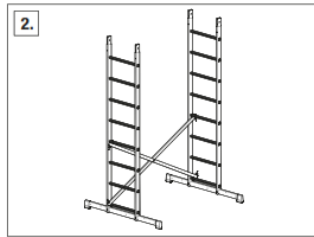
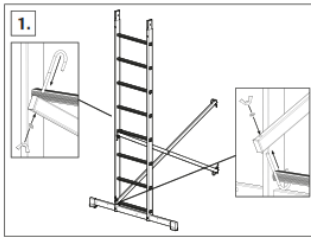
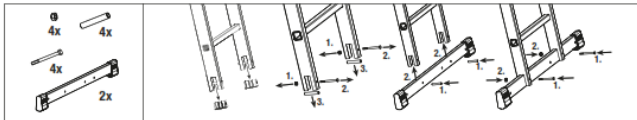
Not included in delivery.



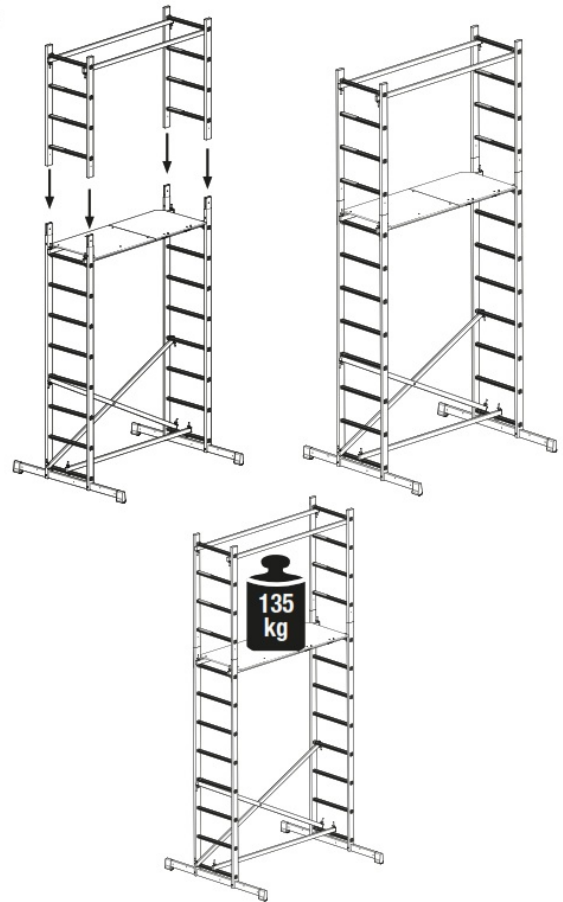
2

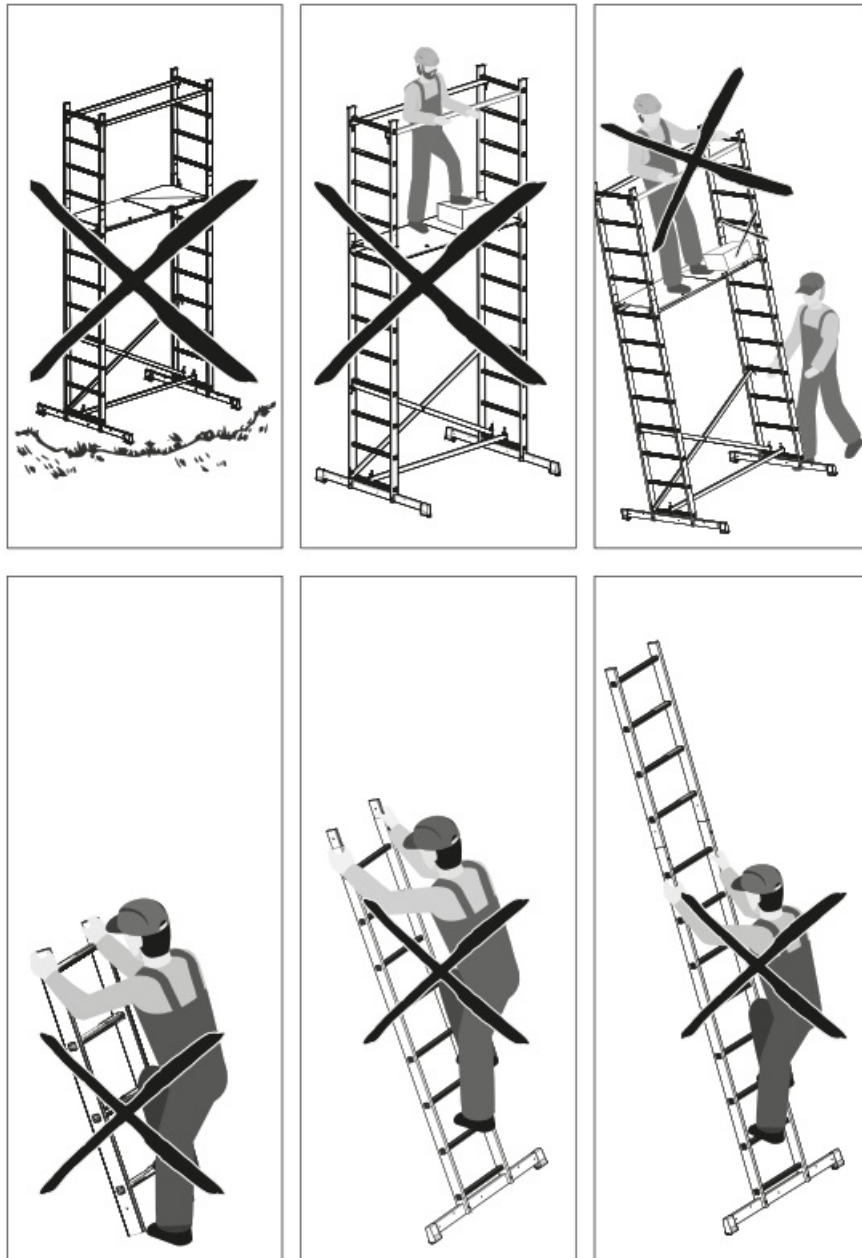


Assembly



7.





Maintenance and servicing

- Prior to assembly of the scaffold all parts must be checked for possible damage and damaged parts must be replaced. Original spare parts may be used only.
- All welding seams and other materials must undergo a visual megalux inspection. Further, the scaffold components must not be deformed or crushed. Please pay really attention on the perfect function of components like hinges, hatches etc.
- The parts must be thrown to avoid damage.
- The scaffold components must be stored in such a way that they cannot be damaged.
- The individual parts must be stored laying and sheltered from the weather.
- During the transport, the construction components must be secured against damage inflicted by slipping, bumping, falling etc.
- For cleaning of scaffold components use water and customary cleansing agents. Colour stains can be removed by using turpentine. The scaffold must be secured against unauthorized use after the end of work. No liability for improper use. Extras, accessories, assembly aids etc. are not included in the scope of delivery.



Subject to technical changes, errors and misprints. In case of doubt, please refer to the original German text. All accessories and work equipment shown are not included in the scope of delivery.

KRAUSE

560821 © 2023 by KRAUSE-Werk D-36304 Alsfeld.

Hersteller/Manufacturer:

KRAUSE-Werk GmbH & Co. KG

Am Kreuzweg 3

D-36304 Alsfeld

Tel.: +49 (0) 6631 795-0

Fax: +49 (0) 6631 795-139

www.krause-systems.com

Documents / Resources

	<p>KRAUSE 916280 Codda Assembly Scaffold Complete Set [pdf] Instruction Manual 916280 Codda Assembly Scaffold Complete Set, 916280, Codda Assembly Scaffold Complete Set, Scaffold Complete Set, Complete Set</p>
--	---

References

- [KRAUSE-Systems - Ihr Partner für sichere Steigtechnik](#)