

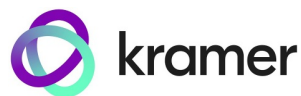


kramer T-IN2-REC2 In Table Elegant Tabletop User Guide

[Home](#) » [Kramer](#) » kramer T-IN2-REC2 In Table Elegant Tabletop User Guide 

Contents

- [1 kramer T-IN2-REC2 In Table Elegant Tabletop](#)
- [2 Product Usage Instructions](#)
- [3 Check What's in the Box](#)
- [4 Table Cutout Dimensions](#)
- [5 ASSEMBLY INSTRUCTIONS](#)
- [6 FAQ](#)
- [7 Documents / Resources](#)
 - [7.1 References](#)
- [8 Related Posts](#)



kramer T-IN2-REC2 In Table Elegant Tabletop



Product Specifications

- **Models:** T-IN2-REC2, T-IN4-REC2, T-IN6-REC2
- **Color Options:** Black, White, Aluminum
- **Recommended Table Thickness:** 10-50 mm (0.39 – 1.97 inches)
- **Dimensions:** Varies based on model

Product Usage Instructions

Step 1: Check What's in the Box

Ensure you have received the following items:

- Enclosure sheet metal box
- Black/White locking device
- Magnet frame
- Cutout template

Step 2: Table Cutout Dimensions

Use the provided cutout template and a hole saw for accurate dimensions.

Step 3: Remove Outer Frame

1. Tighten screws to clamp the frame securely to the table.
2. Ensure the frame fits standard table thickness between 10-50 mm.

Step 4: Slide Modules

Install modules as per the Modules List section.

Step 5: Lock Module

1. Lift the cover plate and position the locking device.
2. Turn the Locking device mechanism to secure the modules.
3. Replace the cover plate.

Step 6: Place Outer Frame

Position the magnet frame back in place.

Scan to see the website



This guide helps you install and use your T-IN2-REC2, T-IN4-REC2, T-IN6-REC2 for the first time. Go to www.kramerav.com/downloads/T-IN2-REC2, www.kramerav.com/downloads/T-IN4-REC2 & www.kramerav.com/downloads/T-IN6-REC2 to download the latest user manual and check if firmware upgrades are available.

Check What's in the Box

The color of the sheet metal box, locking device, and magnet frame are supplied in the same color as selected for the TBUS.

- Enclosure sheet metal box (identical to selected TBUS color)
- Black/White locking device (identical to selected TBUS color)
- Magnet frame (according to the requested TBUS color)
- Cutout template



For White or Aluminum frame and/or White locking device, order separately frame and locking device accordingly.

Table Cutout Dimensions

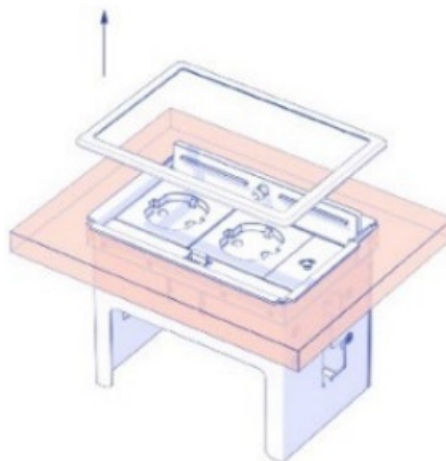
- T-IN2-REC2 – 134 X 89mm (5.28" x 3.5")
- T-IN4-REC2 – 234 X 89mm (9.21" x 3.5")
- T-IN6-REC2 – 334 X 89mm (13.15" x 3.5")

Kramer recommends using the cutout template (packed with device) and a hole saw for maximal accuracy.

ASSEMBLY INSTRUCTIONS

Remove Outer Frame

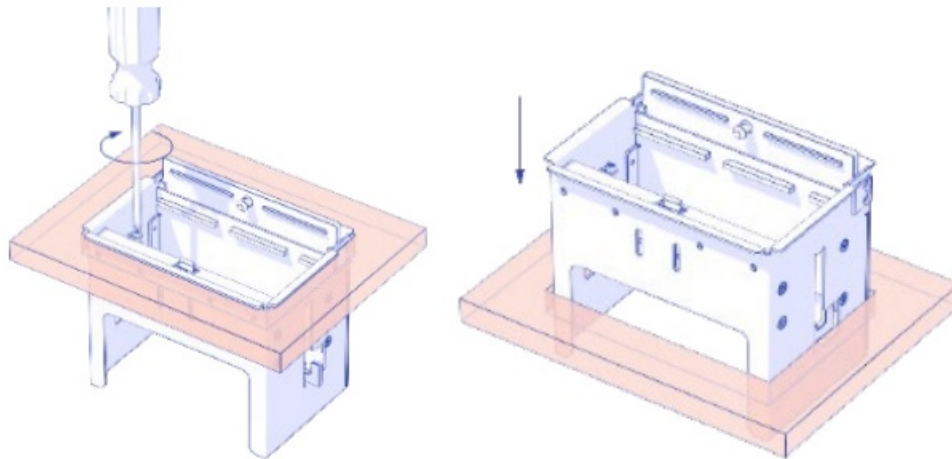
Remove the magnet frame and place it aside.



Place Enclosure – Fasten Screws

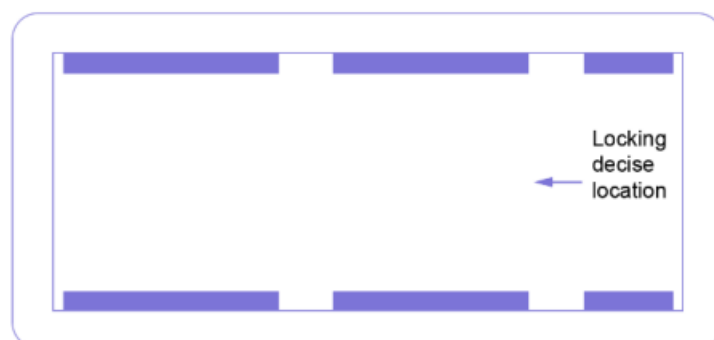
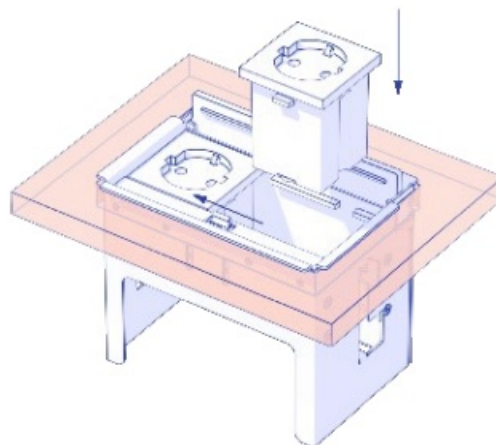
1. Tighten screws until the frame is tightly clamped to the table.

2. Fit to standard table thickness between 10-50 mm (0.39" – 1.97").



Slide Modules

- Some modules are missing grooves – please follow the comments in the 'Modules list'.
- The locking device should be placed on narrow slides as shown below.



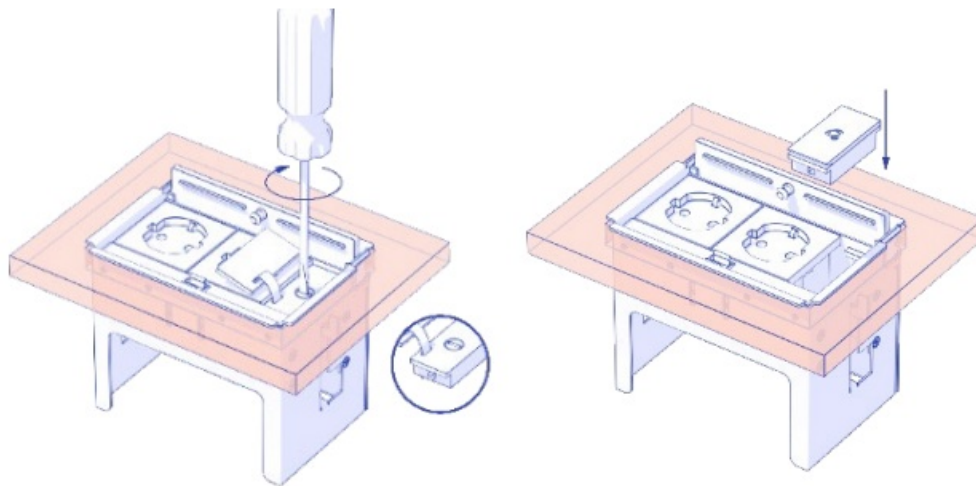
Modules listed in Modules List section

Lock Module

1. Lift the cover plate and place locking device in position.
2. Lock the modules by turning Locking device mechanism a quarter turn (full turn 360°, half turn 180°, 90° does

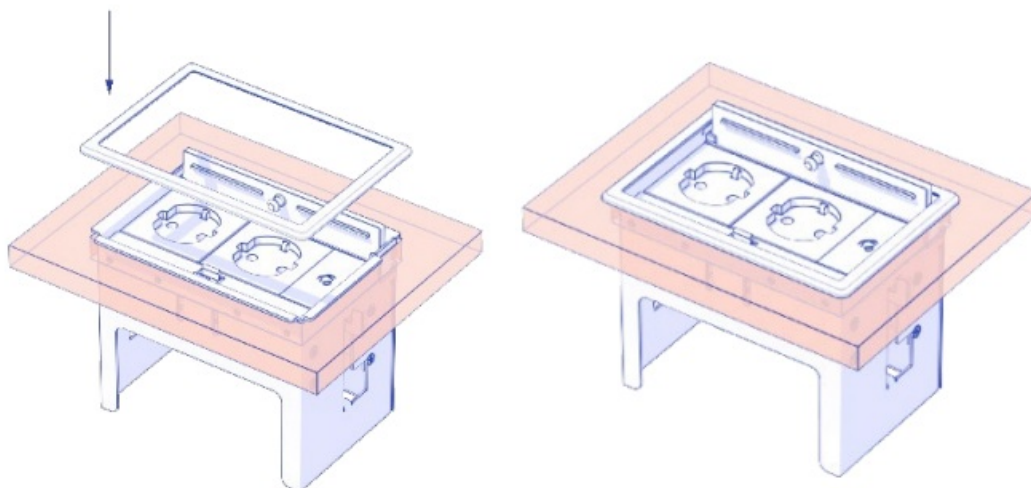
the job).

3. Place back the cover plate.



Place Outer Frame

Place the magnet frame in position.



kramerav.com

FAQ

Q: Where can I download the latest user manual and firmware upgrades?

A: You can download them from

- www.kramerav.com/downloads/T-IN2-REC2,
- www.kramerav.com/downloads/T-IN4-REC2,
- www.kramerav.com/downloads/T-IN6-REC2.

Q: What is the recommended thickness for the table to install the product?

A: The recommended table thickness is between 10-50 mm (0.39 – 1.97 inches).

Documents / Resources



[kramer T-IN2-REC2 In Table Elegant Tabletop](#) [pdf] User Guide
T-IN2-REC2, T-IN2-REC2 In Table Elegant Tabletop, In Table Elegant Tabletop, Elegant Tabletop, Tabletop

References

- [User Manual](#)

Manuals+, Privacy Policy

This website is an independent publication and is neither affiliated with nor endorsed by any of the trademark owners. The "Bluetooth®" word mark and logos are registered trademarks owned by Bluetooth SIG, Inc. The "Wi-Fi®" word mark and logos are registered trademarks owned by the Wi-Fi Alliance. Any use of these marks on this website does not imply any affiliation with or endorsement.