



# KRAMER RC-2C Wall Plate 2 Button Controller User Manual

[Home](#) » [Kramer](#) » KRAMER RC-2C Wall Plate 2 Button Controller User Manual 

## KRAMER RC-2C Wall Plate 2 Button Controller User Manual



### Contents

- 1 Introduction
- 2 Getting Started
- 3 Overview
- 4 Your RC-2C/RC-2
  - 4.1 The RS-232 PINOUT
  - 4.2 Connecting the IR-OUT (for the RC-2C Only)
- 5 Installing the Configuration Software
- 6 Configuring the RC-2C/RC-2 Buttons
- 7 Technical Specifications
- 8 LIMITED WARRANTY
- 9 Documents / Resources
  - 9.1 References
- 10 Related Posts

## Introduction

Welcome to Kramer Electronics! Since 1981, Kramer Electronics has been providing a world of unique, creative, and affordable solutions to the vast range of problems that confront the video, audio, presentation, and broadcasting professional on a daily basis. In recent years, we have redesigned and upgraded most of our line, making the best even better! Our 1,000-plus different models now appear in 11 groups<sup>1</sup>

Congratulations on purchasing your Kramer RC-2C Wall Plate / RS-232/ IR Controller and/or the RC-2 Wall Plate / RS-232 Controller which are available in European (80mm and 86mm versions) and American versions.

### The package includes the following items:

- **RC-2C** Wall Plate / RS-232/ IR Controller or **RC-2** Wall Plate / RS-232 Controller
- Power supply (12V DC input)
- This user manual<sup>2</sup>

## Getting Started

### We recommend that you:

- Unpack the equipment carefully and save the original box and packaging materials for possible future shipment
- Review the contents of this user manual
- Use Kramer high performance high resolution cables<sup>3</sup>

## Overview

The RC-2C/RC-2 is a 1 Gang 2-button controller<sup>1</sup> with an RS-232 port, an IR OUT port (for the RC-2C only) and two backlit and label capable buttons. It sends an RS-232 command—with the push of a button—to a device (such as a projector, display or switcher) via serial control protocols.

Each button can be assigned with a trigger containing up to four actions for RC-2 and up to eight actions for RC-2C.

To achieve the best performance avoid interference from neighboring electrical appliances and position your Kramer RC-2C/RC-2 away from moisture, excessive sunlight and dust.



**Caution:** No operator serviceable parts inside unit.

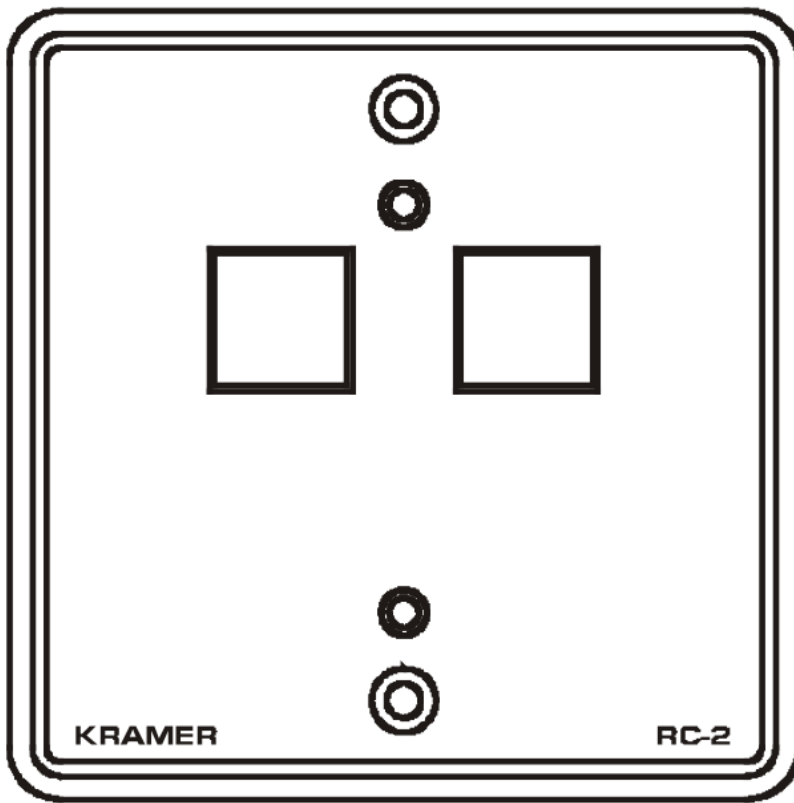
**Warning:** Use only the Kramer Electronics in put power wall adapter that is provided with the unit.

**Warning:** Disconnect power and unplug unit from wall before installing or removing the device or servicing unit.

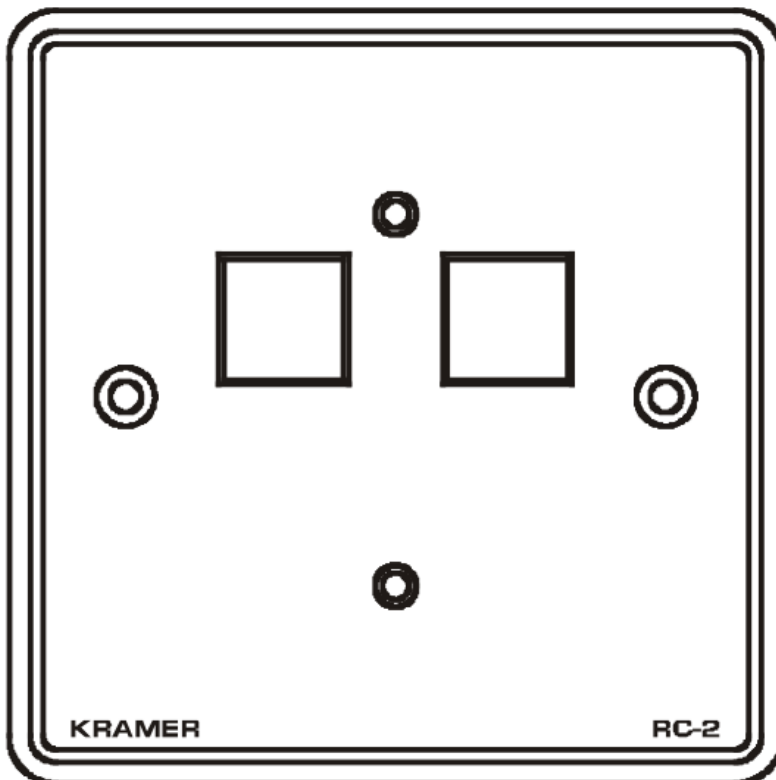
## Your RC-2C/RC-2

The RC-2C/RC-2 is available in three versions<sup>1</sup> (**see Figure 1**): one for Belgium and Germany, one for England and Europe (except Belgium and Germany), and one for the United States:

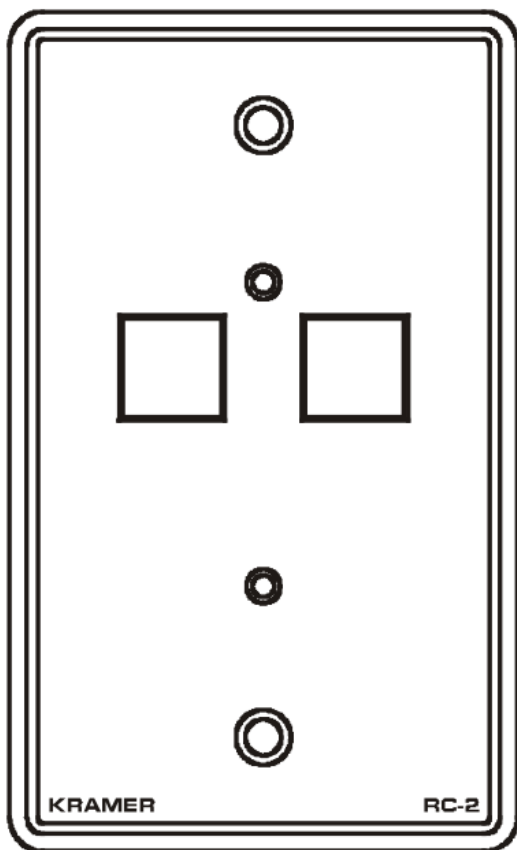
**Destination: Belgium and Germany**



Destination: England and Europe



Destination: United States



Rear Panel Labels for the RC-2C Only

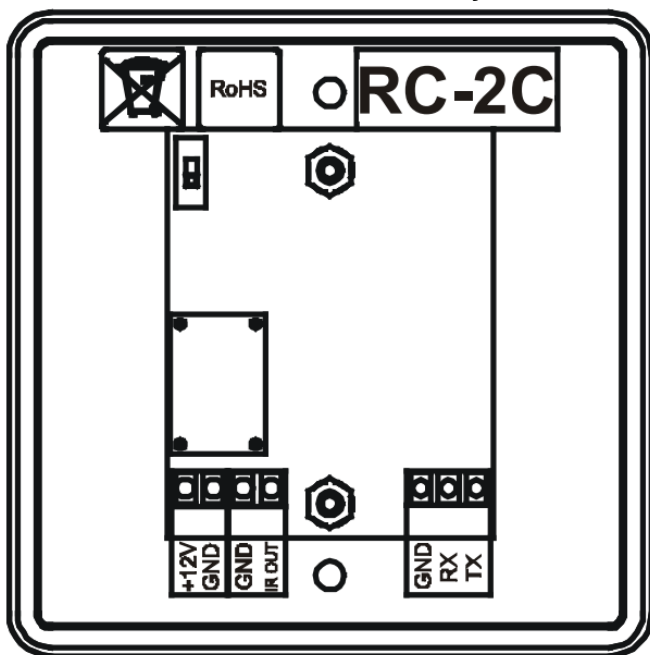
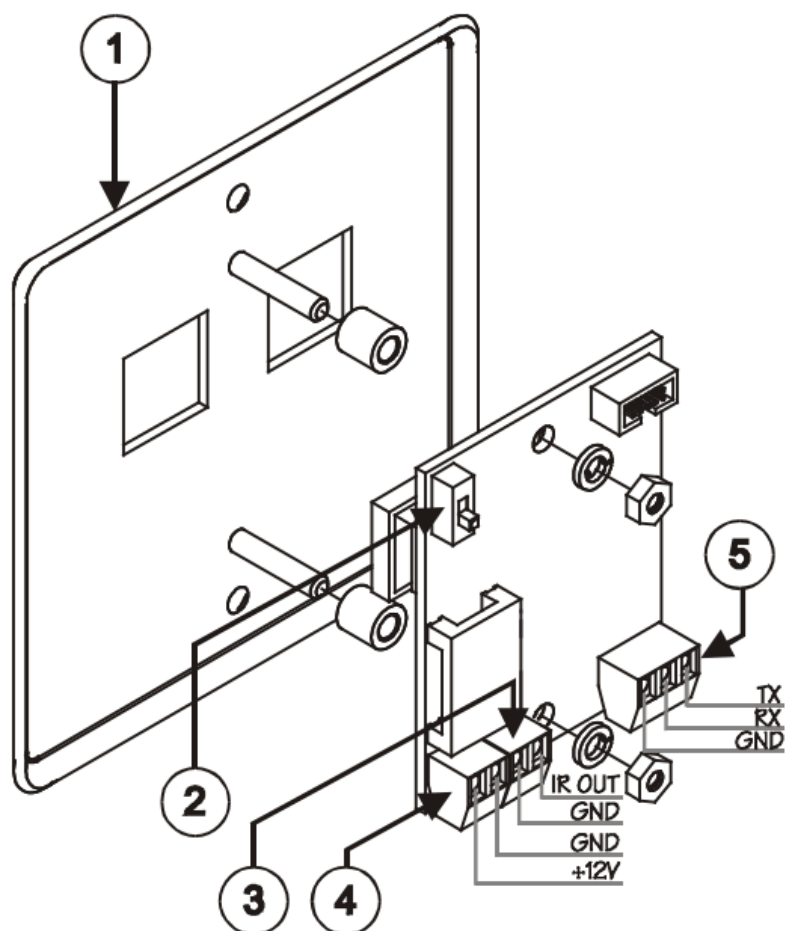


Figure 1: RC-2/RC-2C for Europe and the United States

Figure 2 and Table 1 define the RC-2C rear panel:

Figure 2: RC-2C Rear Panel

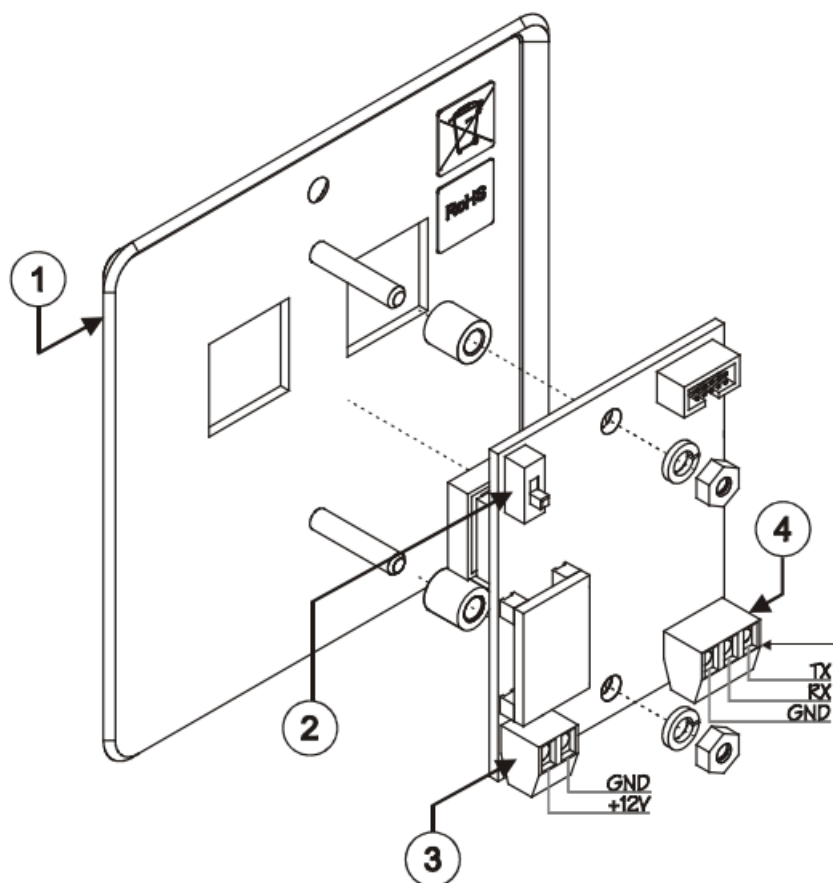


**Table 1: Features and Functions of the RC-2C**

#	Feature	Function
1	<i>RC-2C</i> Front Panel	Front panel, including two control buttons
2	<i>PROGRAM ENABLE</i> Switch	For technical support use only
3	GND PIN	Connect to an IR emitter cable
	IR OUT PIN	
4	<i>+12V</i> PIN	Connects (-) to the Ground
	GND PIN	Connects (+) to the connector for powering the unit
5	<i>RS-232</i> Terminal Block Connector	Connect to the RS-232 connector on the A/V equipment or a PC or other Serial Controller, see <a href="#">Section 4.1</a>

**Figure 3** and **Table 2** define the RC-2 rear panel:

**Figure 3: RC-2 Rear Panel**

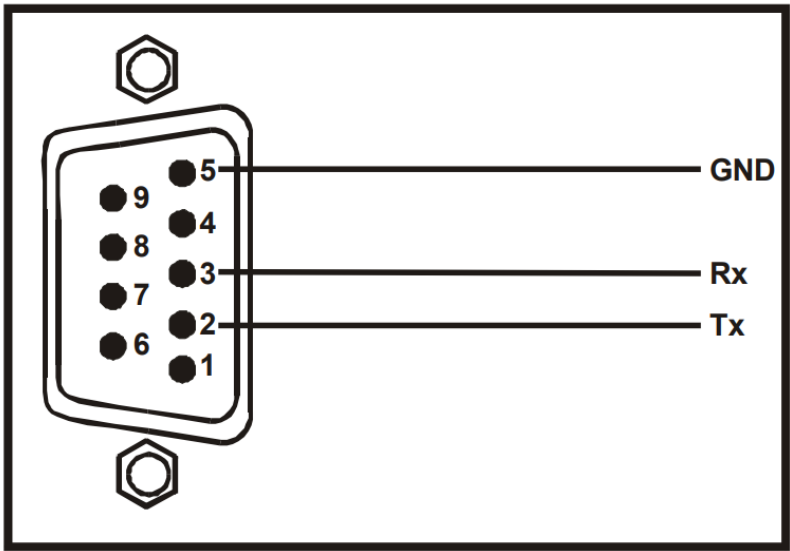


**Table 2: Features and Functions of the RC-2**

#	Feature	Function
1	RC-2 Front Panel	Front panel, including two control buttons
2	<i>PROGRAM ENABLE</i> Switch	For technical support use only
3	<i>GND</i> PIN	Connects (-) to the Ground
	<i>+12V</i> PIN	Connects (+) to the connector for powering the unit
4	<i>RS-232</i> Terminal Block Connector	Connect to the RS-232 connector on the A/V equipment or a PC or other Serial Controller, see <a href="#">Section 4.1</a>

#### The RS-232 PINOUT

The RS-232 9-pin D-sub port PINOUT is defined in Figure 4 and Table 3:



**Figure 4:** RS-232 PINOUT Connection

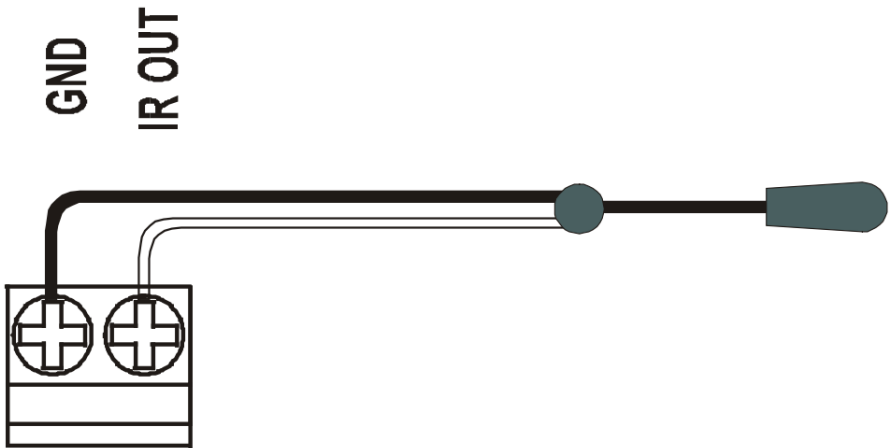
**Table 3:** RS-232 PINOUT Connection

Connect this PIN on the Terminal Block Connector:	To this PIN on the 9-pin D-sub Connector
Tx	PIN 2
Rx	PIN 3
GND	PIN 5

**Connecting the IR-OUT (for the RC-2C Only)**

**Figure 5** shows how to connect the IR emitter1 . The white striped side connects to IR OUT, the black side connects to the Ground, and the LED Emitter Shell is affixed to the IR sensor window with the adhesive layer.

**Figure 5:** IR Emitter Wiring



**Installing the Configuration Software**

Download the **K-Config** configuration software from our Web site and install it (refer to the **K-Config** guide1).

**Configuring the RC-2C/RC-2 Buttons**

To configure the RC-2C/RC-2 buttons, refer to the K-Config guide

#### **Before you configure the RC-2C/RC-2 buttons:**

1. Connect the power to the RC-2C/RC-2 and connect the RS-232 terminal block connector on the RC-2C/RC-2 unit to the 9-pin D-sub COM port on your PC as defined in Section 4.1.
2. Open the K-Config program.  
The main K-Config window appears.
3. Follow the instructions in the K-Config guide to configure the RC-2C/RC-2 buttons.

## **Technical Specifications**

**Table 4 defines the technical specifications:**

**Table 4:** Technical Specifications<sup>2</sup> of the RC-2C/RC-2 Wall Plate / RS-232 Controller

<b>PORTS:</b>	1 RS-232 on a terminal block connector IR OUT on a terminal block connector (for <b>RC-2C</b> only)
<b>POWER SOURCE:</b>	12V DC/500mA adapter, 40mA
<b>DIMENSIONS:</b>	<b>For the USA:</b> 6.9cm x 1.6cm x 11.4cm (2.72" x 0.63" x 4.49", W, D, H) <b>For Europe:</b> 8.6cm x 1.6cm x 8.6cm (3.39" x 0.63" x 3.39", W, D, H), the "86mm version" or 8cm x 1.6cm x 8cm (3.15" x 0.63" x 3.15", W, D, H), the "80mm version"
<b>WEIGHT:</b>	0.3kg (0.67lbs.) approx
<b>ACCESSORIES:</b>	K-Config software
<b>OPTIONS:</b>	RS-232 9-pin D-sub port to 3-pin terminal block connector cable (C-D9F/3PM-0.6)

1. **Download up-to-date Kramer user manuals and guides from the Internet at this URL:**

<http://www.kramerelectronics.com>

2. Specifications are subject to change without notice

## **LIMITED WARRANTY**

Kramer Electronics (hereafter ) warrants this product free from defects in material and workmanship under the following terms.

### **HOW LONG IS THE WARRANTY**

Labor and parts are warranted for seven years from the date of the first customer purchase.

### **WHO IS PROTECTED?**

Only the first purchase customer may enforce this warranty.

### **WHAT IS COVERED AND WHAT IS NOT COVERED**

Except as below, this warranty covers all defects in material or workmanship in this product. The following are not covered by the warranty:



1. Any product which is not distributed by Kramer, or which is not purchased from an authorized Kramer dealer. If you are uncertain as to whether a dealer is authorized, please contact Kramer at one of the agents listed in the Web site [www.kramerelectronics.com](http://www.kramerelectronics.com).
2. Any product, on which the serial number has been defaced, modified or removed, or on which the **WARRANTY VOID IF TAMPERED** sticker has been torn, reattached, removed or otherwise interfered with.
3. Damage, deterioration or malfunction resulting from:
  1. Accident, misuse, abuse, neglect, fire, water, lightning or other acts of nature
  2. Product modification, or failure to follow instructions supplied with the product
  3. Repair or attempted repair by anyone not authorized by Kramer
  4. Any shipment of the product (claims must be presented to the carrier)
  5. Removal or installation of the product
  6. Any other cause, which does not relate to a product defect
  7. Cartons, equipment enclosures, cables or accessories used in conjunction with the product

## **WHAT WE WILL PAY FOR AND WHAT WE WILL NOT PAY FOR**

**We will pay labor and material expenses for covered items. We will not pay for the following:**

1. Removal or installations charges.
2. Costs of initial technical adjustments (set-up), including adjustment of user controls or programming. These costs are the responsibility of the Kramer dealer from whom the product was purchased.
3. Shipping charges.

## **HOW YOU CAN GET WARRANTY SERVICE**

1. To obtain service on you product, you must take or ship it prepaid to any authorized Kramer service center.
2. Whenever warranty service is required, the original dated invoice (or a copy) must be presented as proof of warranty coverage, and should be included in any shipment of the product. Please also include in any mailing a contact name, company, address, and a description of the problem(s).
3. For the name of the nearest Kramer authorized service center, consult your authorized dealer.

## **LIMITATION OF IMPLIED WARRANTIES**

All implied warranties, including warranties of merchant ability and fitness for a particular purpose, are limited in duration to the length of this warranty.

## **EXCLUSION OF DAMAGES**

**The liability of Kramer for any effective products is limited to the repair or replacement of the product at our option. Kramer shall not be liable for:**

1. Damage to other property caused by defects in this product, damages based upon inconvenience, loss of use of the product, loss of time, commercial loss; or:
2. Any other damages, whether incidental, consequential or otherwise. Some countries may not allow limitations on how long an implied warranty lasts and/or do not allow the exclusion or limitation of incidental or

consequential damages, so the above limitations and exclusions may not apply to you.

This warranty gives you specific legal rights, and you may also have other rights, which vary from place to place.  
**NOTE:** All products returned to Kramer for service must have prior approval. This may be obtained from your dealer.

**This equipment has been tested to determine compliance with the requirements of:**

**EN-50081:** "Electromagnetic compatibility (EMC); generic emission standard.

**Part 1:** Residential, commercial and light industry"

**EN-50082:** "Electromagnetic compatibility (EMC) generic immunity standard.

**Part 1:** Residential, commercial and light industry environment".

**CFR-47: FCC\* Rules and Regulations:**

**Part 15:** "Radio frequency devices Subpart B Unintentional radiators"

## **CAUTION!**

Servicing the machines can only be done by an authorized Kramer technician. Any user who makes changes or modifications to the unit without the expressed approval of the manufacturer will void user authority to operate the equipment.

Use the supplied DC power supply to feed power to the machine.

Please use recommended interconnection cables to connect the machine to other components.

IF reattached, removed or otherwise interfered with. \* FCC and CE approved using STP cable (for twisted pair products)

For the latest information on our products and a list of Kramer distributors, visit our Web site:

[www.kramerelectronics.com](http://www.kramerelectronics.com), where updates to this user manual may be found. We welcome your questions, comments and feedback.



**Caution**

## **Safety Warning:**

Disconnect the unit from the power supply before opening/servicing.

**Kramer Electronics, Ltd.**


**Web site:** [www.kramerelectronics.com](http://www.kramerelectronics.com)

**E-mail:** [info@kramerel.com](mailto:info@kramerel.com)

**P/N:** 2900-000546 REV 3



## Documents / Resources

<p>Kramer Electronics, Ltd.</p>  <p>USER MANUAL</p> <p>Models: RC-2C, Ref. No.: KR-011-08 (Rev.01) RC-2C, Ref. No.: KR-011-08 (Rev.01)</p>	<p><a href="#"><u>KRAMER RC-2C Wall Plate 2 Button Controller</u></a> [pdf] User Manual</p> <p>RC-2C Wall Plate 2 Button Controller, RC-2C, Wall Plate 2 Button Controller, Plate 2 Button Controller, 2 Button Controller, Controller</p>
---	--

## References

- [!\[\]\(0551a83d441798e532995956b603f604\_img.jpg\) Kramer | Audio Visual Solutions - Kramer](#)
- [User Manual](#)

Manuals+,