



Kpmare KM009 2.4GHz Wireless Keyboard Instruction Manual

[Home](#) » [KPMARE](#) » Kpmare KM009 2.4GHz Wireless Keyboard Instruction Manual 

Contents

- [1 Kpmare KM009 2.4GHz Wireless Keyboard](#)
- [2 Product Specification](#)
- [3 You will receive](#)
- [4 How to set up](#)
- [5 FAQs](#)
- [6 WARRANTY COVERAGE](#)
- [7 Indicator Function Instruction](#)
- [8 FCC COMPLIANCE STATEMENT](#)
- [9 Documents / Resources](#)
 - [9.1 References](#)

Kpmare

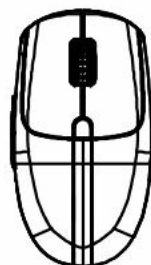
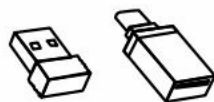
Kpmare KM009 2.4GHz Wireless Keyboard



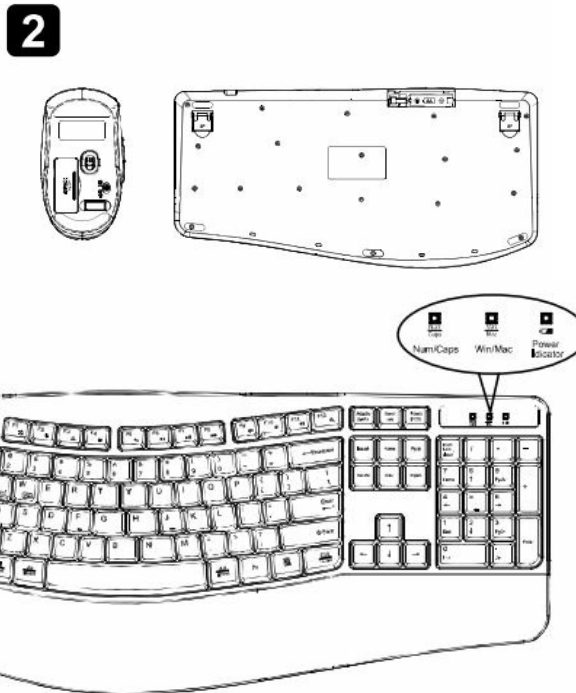
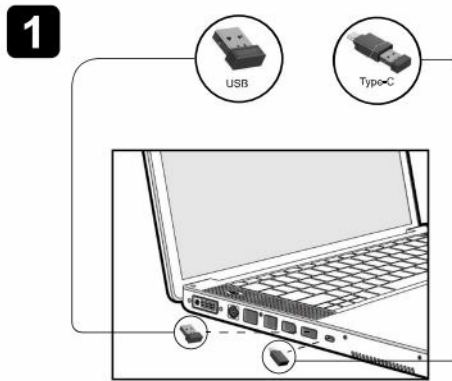
Product Specification

- Connection: 2.4G Wireless Connection
- Receiver type: USB Nano Receiver
- Standby hours: 900 hours
- Working time: 180 hours of typing
- Working distance: 10 meters from the receiver without obstruction
- power: Two AAA batteries for the keyboard

You will receive



How to set up



FAQs

What should I do if the keyboard becomes sticky after a period of usage?

This usually happens due to low power. Please replace the battery on the keyboard and try again.

What should I do if I can't type with the keyboard?

First, please make sure whether the keyboard can be turned on. If you can't turn on the keyboard, please change the battery and try again, if it still won't work, please contact us if you can turn on the keyboard just it won't type, please try repairing the keyboard with the USB receiver.

What should I do if my mouse stopped working?

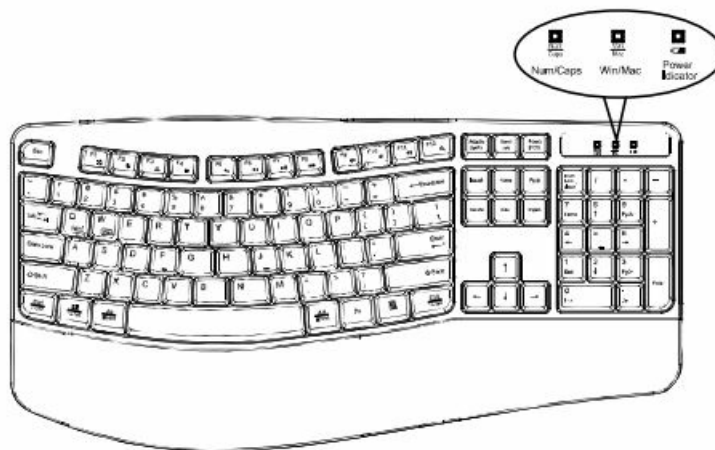
First, please confirm whether the mouse can be turned on. If you can't successfully turn on the mouse, change the battery and try again.

WARNING

- Do not expose this product to water. prevent liquid from entering the product.
- Water or humidity may cause short circuits and damage this keyboard.
- Do not drop or hit this product. Shocks may damage the components inside.
- Do not put this product near extreme heat or fire.
- Do not try to disassemble or modify this product on your own.

WARRANTY COVERAGE

1.30-day unconditional money-back guarantee.If you are not completely satisfied with this product for any reason. We will gladly refund your purchase price within 30 days of purchase(from the date of retail purchase). 2.1-year limited warranty. ONE(1)YEAR from the date of retail purchase, if a hardware defect arises(not due to personal alterations or attempted repairs)and a valid claim is received within the warranty period.



NOTE

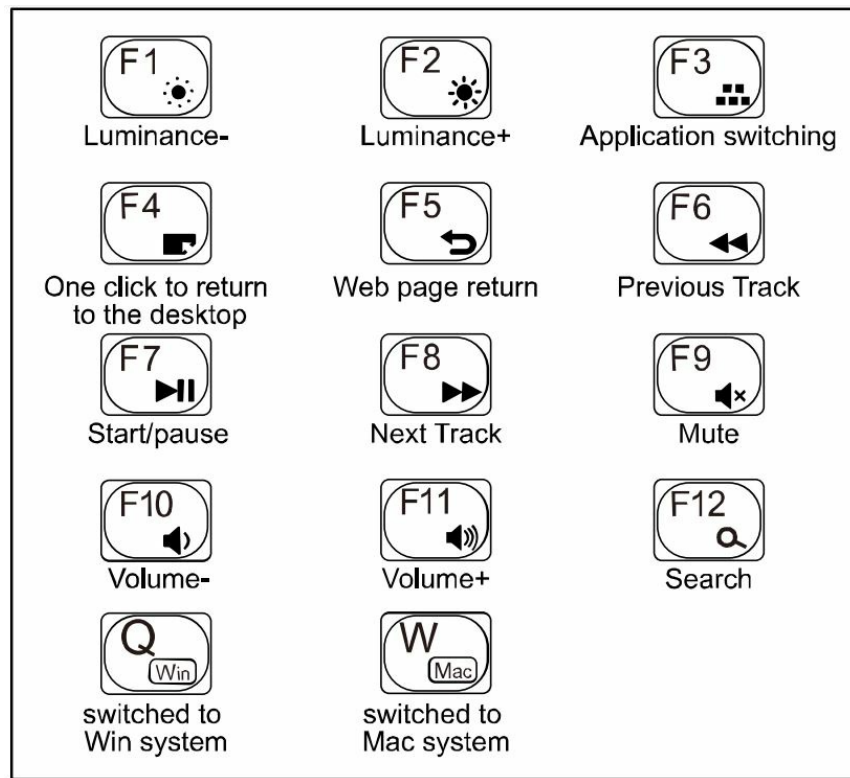
The multimedia keys are for Wind and Win 10, for other systems, there may be no for some combined keys. kpmare@yeah.net .We will deal with your problem as soon as possible.

Indicator Function Instruction



Instruction of the Multi-function keys

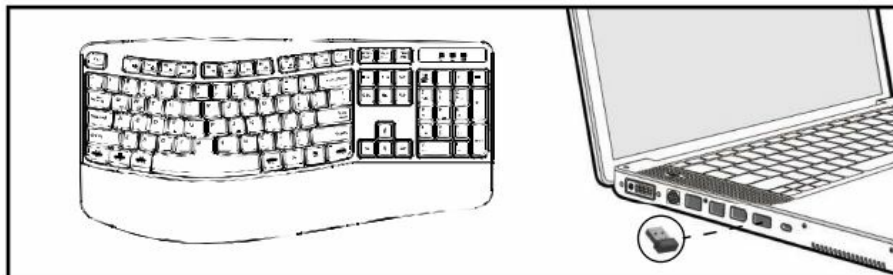
press F1-F12 keys directly, you can only use the functions of F1-F 12. To use these multimedia functions, you need to press and hold the button"FN" first, and then press the corresponding function button. Switch between two systems FN+Q=WIN FN+W=MAC



How to repair the keyboard to the USB receiver

Step 1. Insert the USB receiver and place the keyboard as close as possible to the USB receiver.

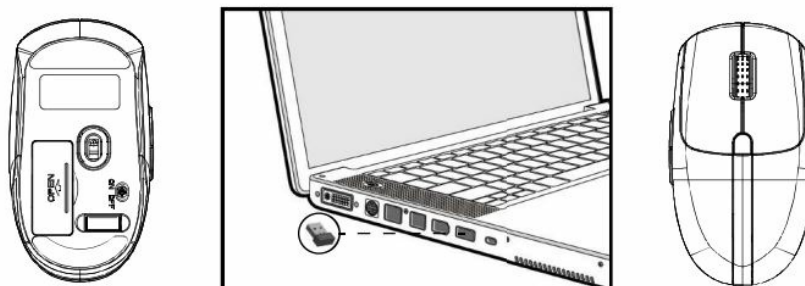
Step 2. Press and hold the keyboard “ESC” + “=” keys together to pair again.



How to repair the mouse to the USB receiver

Step1: Take out the battery and USB receiver, reload the battery and plug the receiver into the computer, for the mouse to enter a full reset.

Step2.: Press and hold the Left button and the Right button with the Scroll button together to pair again.



FCC COMPLIANCE STATEMENT

This device complies with part 15 of the FCC Rules. Operation is subject to the following two conditions: This device may not cause harmful interference, and this device must accept any interference received, including

interference that may cause undesired operation.

Note: This equipment has been tested and found to comply with the limits for a Class B digital device, under Part 15 of the FCC Rules. These limits are designed to provide reasonable protection against harmful interference in a residential installation. This equipment generates, uses and can radiate radio frequency energy and, if not installed and used by the instructions, may cause harmful interference to radio communications. However, there is no guarantee that interference will not occur in a particular installation. If this equipment does cause harmful interference to radio or television reception, which can be determined by turning the equipment off and on, the user is encouraged to try to correct the interference by one or more of the following measures:

- Reorient or relocate the receiving antenna.
- Increase the separation between the equipment and the receiver.
- Connect the equipment to an outlet on a circuit different from that to which the receiver is connected.
- Consult the dealer or an experienced radio/TV technician for help.


Warning

Changes or modifications to this unit not expressly approved by the part responsible for compliance could void the user’s authority to operate the equipment.

FCC Radiation Exposure Statement

The device has been evaluated to meet general RF exposure requirements. The device can be used in portable exposure condition without restriction.

Documents / Resources

	Kpmare KM009 2.4GHz Wireless Keyboard [pdf] Instruction Manual 2BDIRHS-EK30, 2BDIRHSEK30, KM009, KM009 2.4GHz Wireless Keyboard, 2.4GHz Wireless Keyboard, Wireless Keyboard, Keyboard
---	---

References

- [User Manual](#)