

KPLED WX1 2.4G Wifi Smart Controller



KPLED WX1 2.4G Wifi Smart Controller User Manual

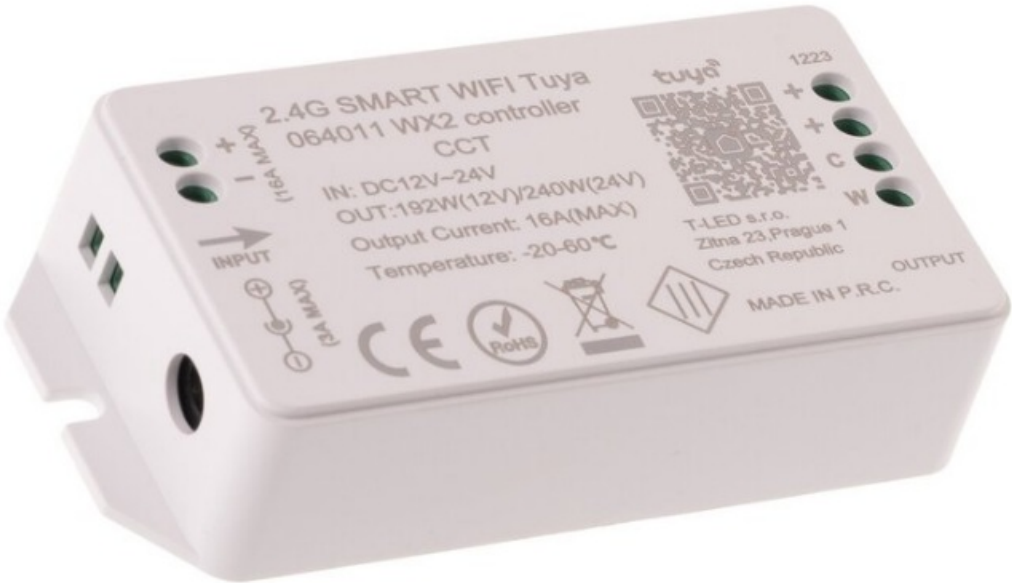
[Home](#) » [KPLED](#) » KPLED WX1 2.4G Wifi Smart Controller User Manual 

Contents

- 1 KPLED WX1 2.4G Wifi Smart Controller
- 2 Features
- 3 Parameters
- 4 Download APP
- 5 Precautions
- 6 Documents / Resources
 - 6.1 References
- 7 Related Posts



KPLED WX1 2.4G Wifi Smart Controller



Features

1. Wifi connection, mobile phone APP control, support Android 4.0, IOS 8.1, and other higher version systems.
2. Support voice control through the intelligent speaker.
3. 5~100% non-pole dimming.
4. Compatible with the full sequence of W/W+ WW/RGB/RGBW/RGBWW LED light.
5. With timing switch LED light function.
6. Can remotely control the LED light at any time through the Internet.
7. Intelligent scene function: with a variety of different intelligent scenes and different scenes to create different lighting effects.
8. Group control: can group control of multiple devices (limited to the same type of equipment).
9. Device sharing: The device can be shared with other users to control.

Parameters

- **Working temperature:** -20~60°C
- **Input voltage:** DC12V/DC24V
- **Max. output power:** 192W(12V)/240W(24V)
- **Connection method:** Wi-Fi(2.4G Hz)
- **Control mode:** APP/Voice
- **Dimension:** L100 * W47* H23 mm

Download APP

- **Method 1:** Search for “Smart Life” in the APP Store or Google Play.



- **Method 2:** Scan the QR code from the controller or user manual.

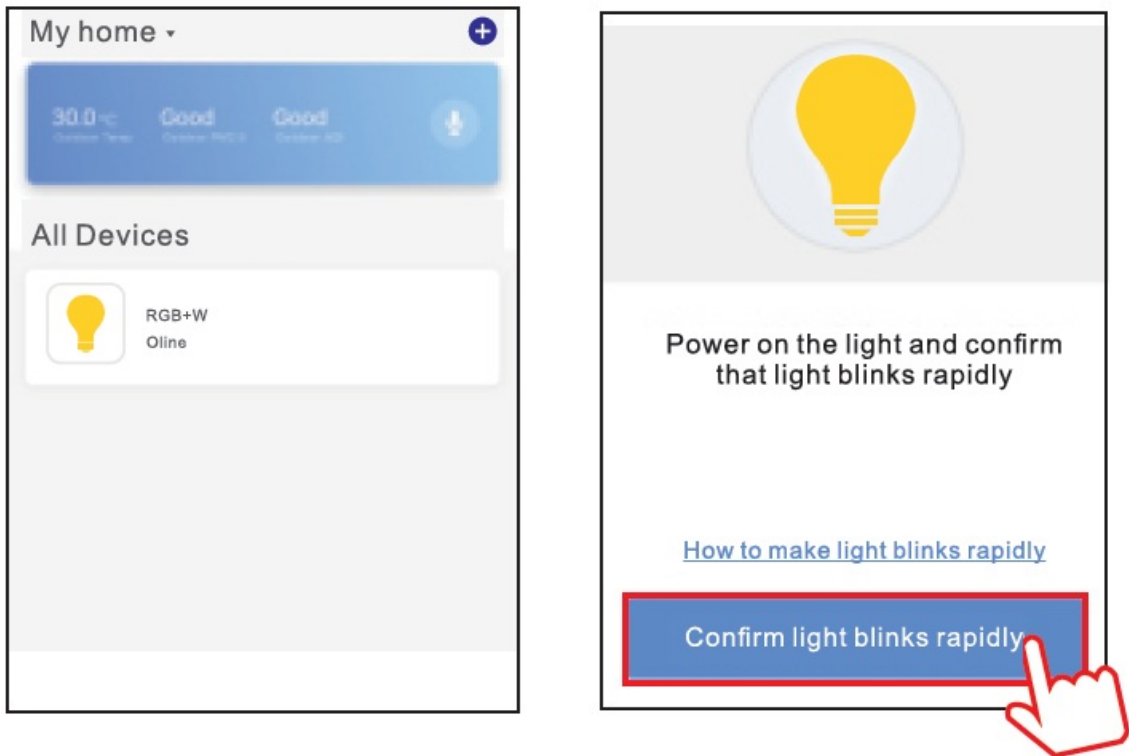
Register or login an account

Open the “Smart Life” APP, register a new account, or log into an existing one.

Connect APP

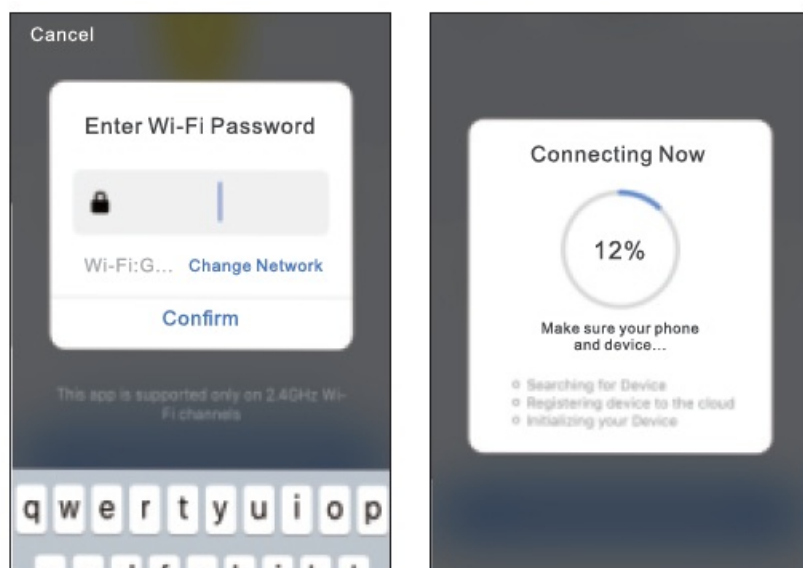
- **Step 1:** Preparation: Confirm that the Wi-Fi signal is good and stable, turn on the LED lamp power, and then enter the APP home page.
- **Step 2:** Confirm whether the LED light is flashing white light or red light, if so, jump to Step 4 directly, otherwise proceed to the next step.
- **Step 3:** The controller connects the Internet with the mobile phone through power on/off, operation sequence: Power OFF→Power ON→Power OFF→Power ON→Power OFF→Power ON, and then wait for a few seconds until the led light flashing, and it indicates that the controller has entered the connecting state.
- After power on, when the LED light works, then can power off immediately, after power off, when the LED light does not work, then can power on immediately.

- The LED light flashes at an interval of 0.5 seconds, indicating that the controller is in intelligent fast connecting mode. If the LED light flashes at an interval of 1.5 seconds, it indicates that the controller is in APP connecting mode.
- **Step 4:** Add devices:
- If the mobile phone's Bluetooth function is ON, the APP will automatically pop up the device which can be added.
- If the mobile phone's Bluetooth function is OFF, the device should be added manually.



- **Step 5:** Select the Wi-Fi network you want to connect to, enter the Wi-Fi password, click “OK”, then wait for the connection to succeed.(Make sure the devices share the same Wi-Fi).

Note: For more detailed instructions, please refer to the operation guide on the APP.



Third-Party Voice Services

- From the Home page of the Smart Life APP, click on the “Me” menu in the lower right corner.
- Select the Voice service you want (Alexa/Google Assistant) from the “Third-party Voice Services” column and then connect to a third-party Voice service according to the instructions.


Precautions

1. Stay away from water or fire.
2. Keep away from high-power electronic equipment, corners, or large obstacles so as not to affect the remote control distance.
3. Do not expose the product to high temperatures.
4. Do not cover the device with anything. Otherwise, heat dissipation or signal transmission may be affected.
5. Do not disassemble or repair the product without permission. If you have any problems, please contact after-sales service.

Please read the user manual and keep it properly before use.



Documents / Resources

	<p>KPLED WX1 2.4G Wifi Smart Controller [pdf] User Manual WX1, WX1 2.4G Wifi Smart Controller, 2.4G Wifi Smart Controller, Wifi Smart Controller, Smart Controller, Controller</p>
---	--

References

- [User Manual](#)

Manuals+, Privacy Policy

This website is an independent publication and is neither affiliated with nor endorsed by any of the trademark owners. The "Bluetooth®" word mark and logos are registered trademarks owned by Bluetooth SIG, Inc. The "Wi-Fi®" word mark and logos are registered trademarks owned by the Wi-Fi Alliance. Any use of these marks on this website does not imply any affiliation with or endorsement.