
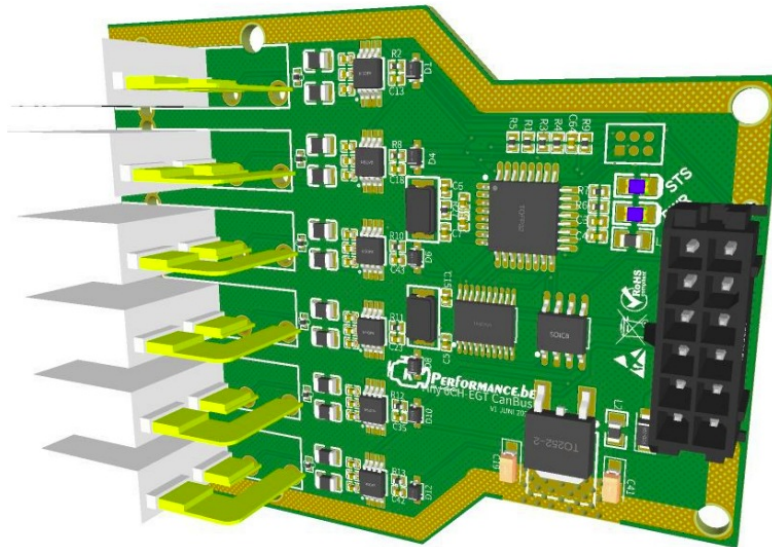


KPERFORMANCE bE O2 Tiny EGT Controller CAN Bus User Manual

[Home](#) » [KPERFORMANCE bE](#) » KPERFORMANCE bE O2 Tiny EGT Controller CAN Bus User Manual 

KPERFORMANCE bE O2 Tiny EGT Controller CAN Bus User Manual



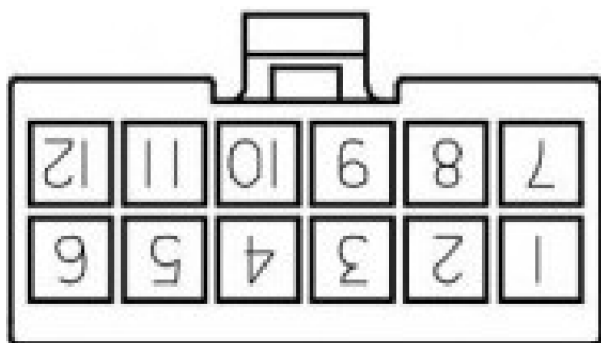
Package Contents

Tiny EGT should include the following Items:

- 1x circuit board with soldered surface mount components
- 1x MicroMolex connector
- 12x MicroMolex receptacles
- 1x 3D printed case

Electrical connections

C1		Function
1	CANH	CanBus HIGH
2	Tc2	Tc2 Analog OUT OR Spare Analog 2 IN
3	Tc4	Tc4 Analog OUT OR Spare Analog 4 IN
4	Tc6	Tc6 Analog OUT OR Spare Analog 6 IN
5	5V	+5V Supply OUT
6	GND	Ground
7	CANL	CanBus LOW
8	Tc1	Tc1 Analog OUT OR Spare Analog 1 IN
9	Tc3	Tc3 Analog OUT OR Spare Analog 3 IN
10	Tc5	Tc5 Analog OUT OR Spare Analog 5 IN
11	12v	Input Power
12	GND	Ground



Molex-Notch facing Tc connections

Operational led Status

LED	Status	Function
1	Power	Controller Started
	Off	Unit No Power
2	Blinking/On	Canbus Activity/Connection OK CAN-connection or settings N OK
Off		



Contents

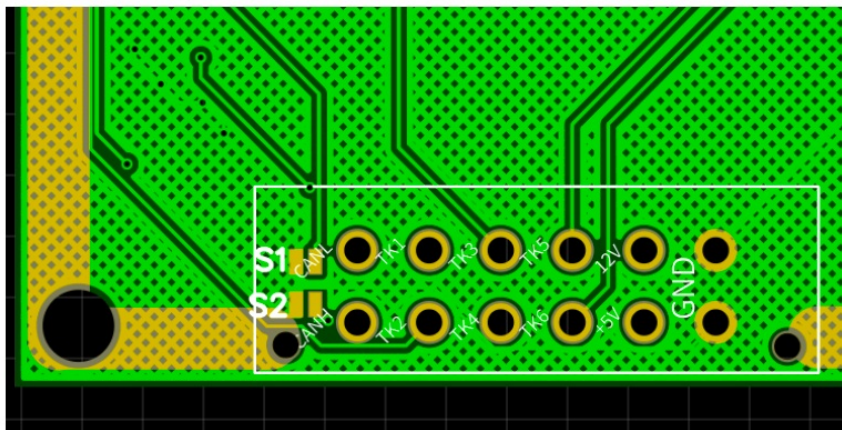
- [1 CAN-bus Setup](#)
- [2 Tunerstudio Setup](#)
- [3 Documents / Resources](#)
 - [3.1 References](#)
- [4 Related Posts](#)

CAN-bus Setup

Custom CAN-ID addressing(Optional)

Use full for users who already have multiple CAN-devices connected; resulting in duplicate ID conflicts.

Default ID = 5



Select custom ID via solder bridges S1&S2 on the bottm

CAN-ID	S1	S2
8	open	closed
7	closed	closed
6	closed	open
<u>5(default)</u>	<u>open</u>	<u>open</u>

The Tiny EGT CanBus data:

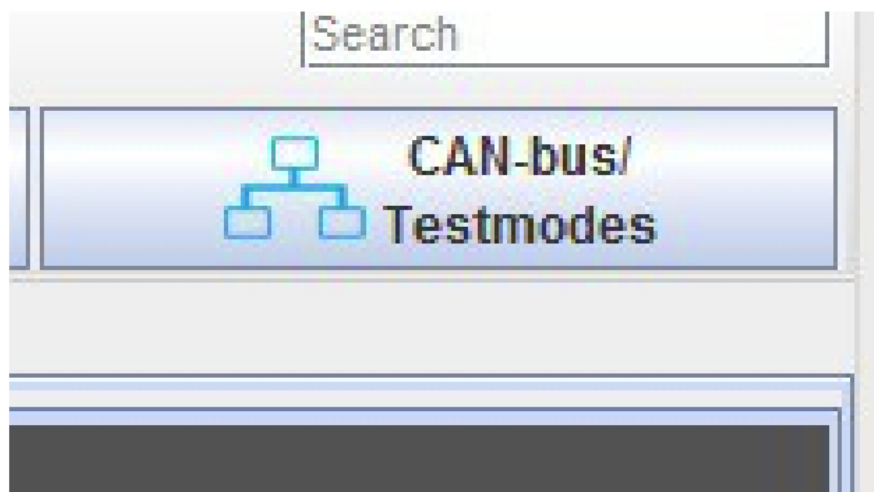
Item	Function	Detail
CAN Speed	500 Kbit	Default Speed
CAN ID	5/6/7/8	CAN-Bus ID

Tunerstudio Setup

EGT OR (Spare ADC) CAN-Inputs:

CAN ADC 17-20 are used for EGT 1-4:

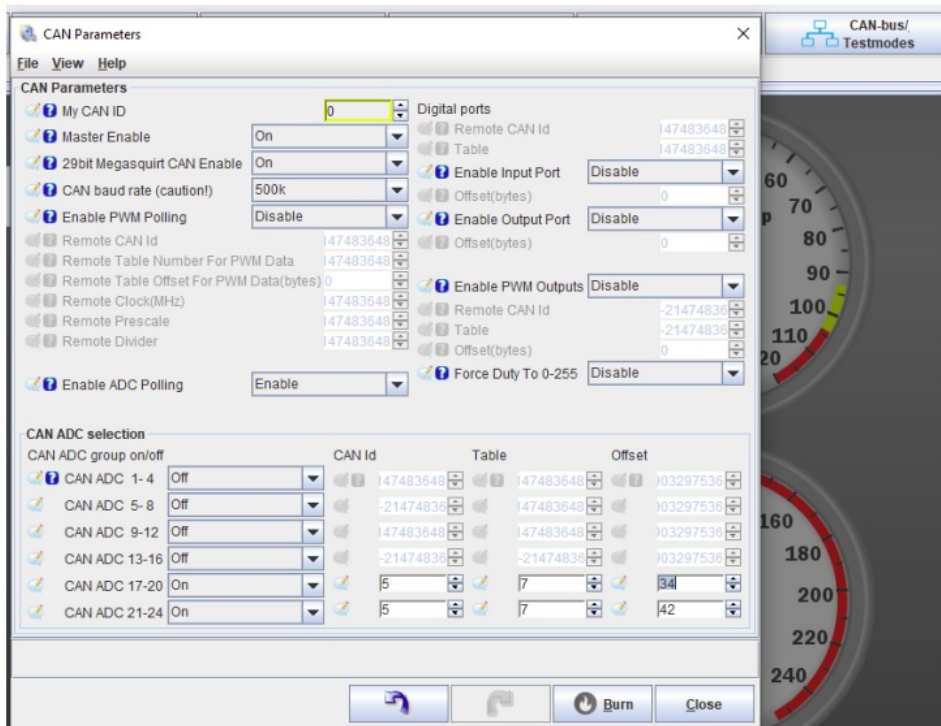
Your selected CanBus ID, Table 7 with offset 34



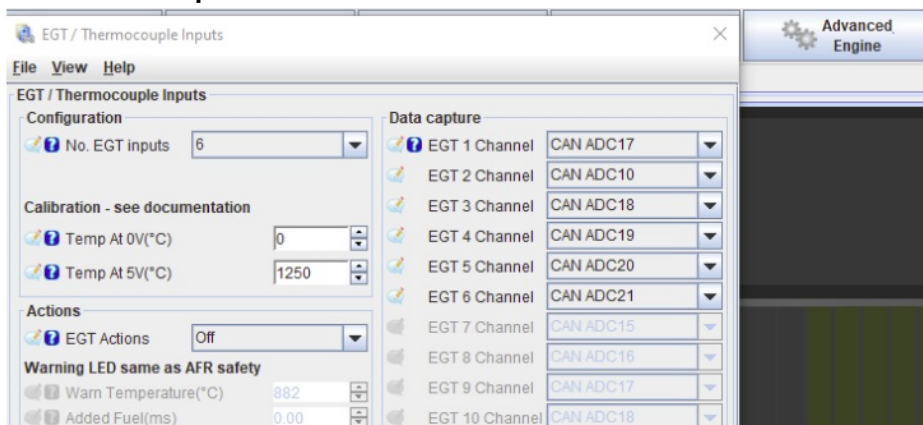
CAN ADC 21-22 are used for EGT 5-6:

CAN ADC 23-24 are used for monitoring PowerInput and version.

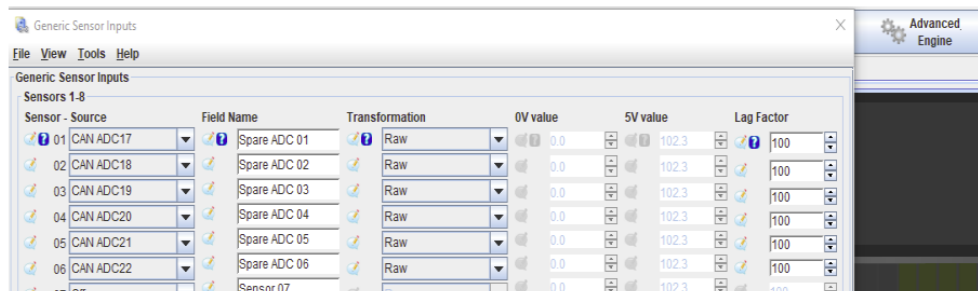
Your selected CanBus ID, Table 7 with offset 42



6x CAN EGT Inputs:



Unused EGT Inputs as spare CAN Analog Inputs:



WARNING



Do NOT connect more than 5V on input pins

CAN ADC 23-24 can NOT be re-used

Documents / Resources

 <p>KPERFORMANCE be</p> <p>Tiny EGT Controller Software & Hardware and more info can be downloaded at: www.kperformance.be</p>	<p>KPERFORMANCE be O2 Tiny EGT Controller CAN Bus [pdf] User Manual CAN-bus v1, CAN-bus v1.2, O2 Tiny EGT Controller CAN Bus, O2, Tiny EGT Controller CAN Bus, EGT Controller CAN Bus, Controller CAN Bus</p>
--	---

References

-  [KPerformance](#)
-  [KPerformance](#)
- [User Manual](#)

Manuals+ Privacy Policy

This website is an independent publication and is neither affiliated with nor endorsed by any of the trademark owners. The "Bluetooth®" word mark and logos are registered trademarks owned by Bluetooth SIG, Inc. The "Wi-Fi®" word mark and logos are registered trademarks owned by the Wi-Fi Alliance. Any use of these marks on this website does not imply any affiliation with or endorsement.