

# KP Electronic Systems MT2W-MK Long Range Synthesized Radio Meter Transmitter Instruction Manual

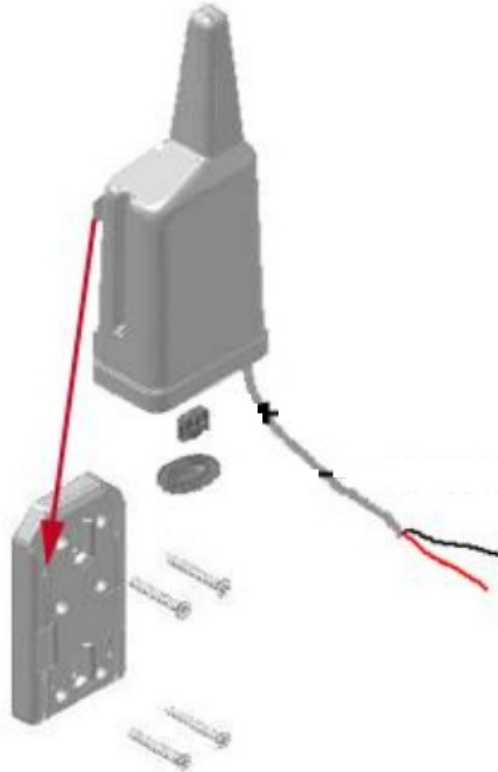
[Home](#) » [KP Electronic Systems](#) » KP Electronic Systems MT2W-MK Long Range Synthesized Radio Meter Transmitter Instruction Manual 

## Contents

- [1 KP Electronic Systems MT2W-MK Long Range Synthesized Radio Meter Transmitter General Description](#)
- [2 Preparing for Operation](#)
- [3 Technical Specifications](#)
- [4 Documents / Resources](#)
  - [4.1 References](#)
- [5 Related Posts](#)

**KP** ELECTRONIC  
SYSTEMS LTD

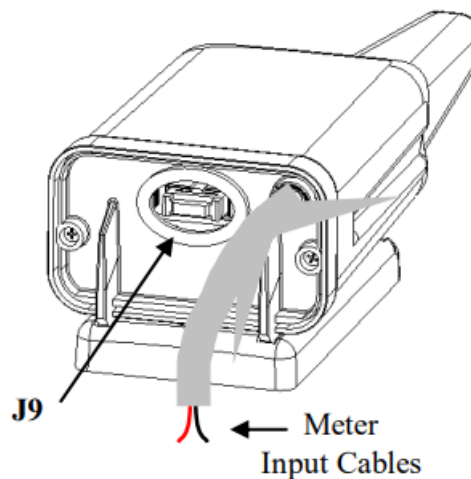
## KP Electronic Systems MT2W-MK Long Range Synthesized Radio Meter Transmitter



### General Description

MT2W-MK™ is a long-range, synthesized radio-metering transmitter in the VHF 450- 470 MHz frequency range.. When the MT2W-MK detects pulse conditions at one or more of its inputs the pulse is counted and saved. When the number of the pulse is equal to the Trans Scale defined by the GUP10™, it is then transmitted to the central station according to the WAT-NETTM protocol selected for the system in operation.

**MT2W-MK™ has one connector (see Figure 1)**



- **J9:** The 10-pin programming jack is a serial port to connect a PC or an FTU (see Figure 1).
- Unit parameters and meters values are easily programmed using Gup10™ utility-programming software. (See the MT2W-MK™ Programming Guide) or by the FTU.
- **Meter Input:** The meter input is a two wires cable. These wires connect to the meter output.

## Preparing for Operation

Before installing the MT2W-MK™ on-site, perform the following preparations:

1. Setting communication parameters
2. Self-test

### Setting Communication Parameters

Connect the GUP10 program to the MT2W-MK™ (see the MT2WMK™ programming guide)

### Self-Test

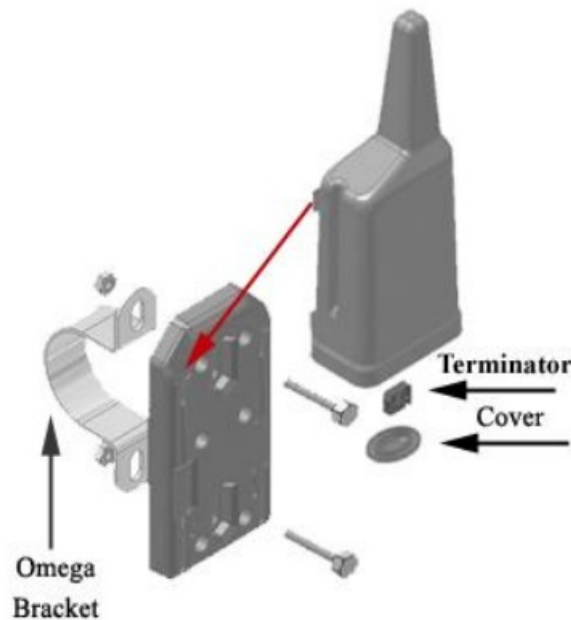
In order to perform a self-test please see the Field Programmer User Guide.

### Installing the MT2W-MK

There are two mounting methods:

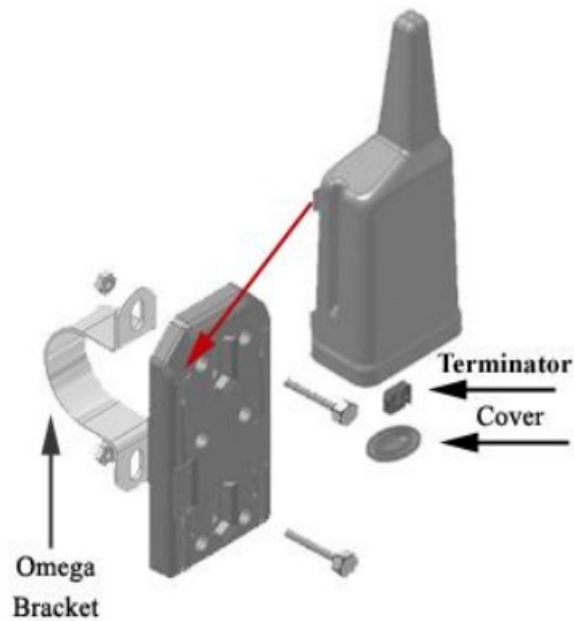
1. Wall mounting
2. On-Pipe mounting

#### Wall Mounting Installation



1. Fasten the mounting bracket on the wall with four screws (see figure 2)
2. Slide the MT2W-MK unit on the mounting bracket until the 4 clips are locking the unit
3. Define the parameters with the field programmer (FTU100) see the FTU User Guide
4. Insert the terminator to J9 (See figure 1)
5. Put the cover.

## On-Pipe Mounting Installation



1. Fasten the mounting bracket on the pipe with two screws and the “Omega” bracket (See figure 3)
2. Slide the MT2W-MK unit on the mounting bracket until the 4 clips are locking the unit
3. Define the parameters with the field programmer GUP application.
4. Insert the terminator to J9 (See figure 1)
5. Put the cover.

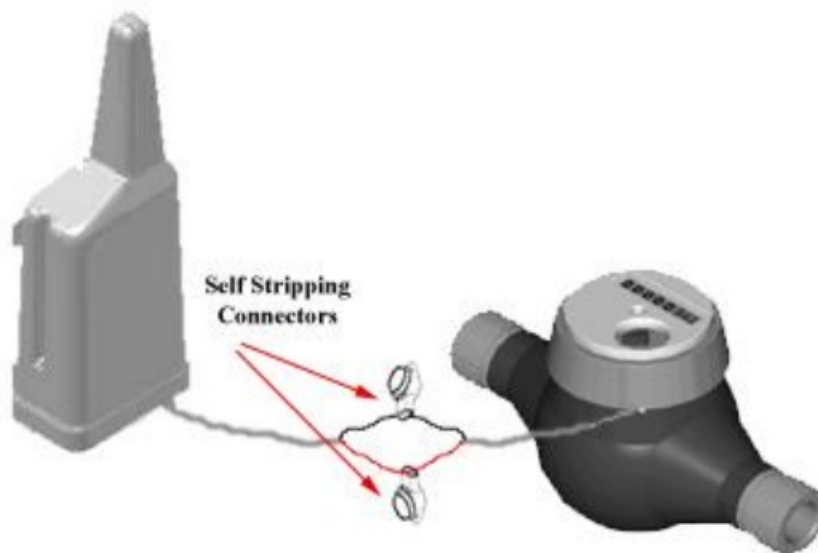
## Restrictions

1. Do not mount the unit on any kind of metal surface.
2. Do not mount any input cable next to the antenna (see figure).

## Meter types

1. There are two main types of meters:
2. Meters that produce a ‘Passive Pulse’.
3. Meters that produce an ‘Active- Pulse’ (known also as-“Pulse Generator”).

## Wiring



## Technical Specifications

Operating Voltage	8–15 VDC
Standby Current	30 $\mu$ A max.
Tx Current	0.8A max.
Power Output	3W
Freq. Stability	$\pm 0.5$ ppm at operating temp. range
Operating Temp.	-22°F ÷ 120°F (-30°C ÷ 60°C)
Storage Temp.	-40°F ÷ 158°F (-40°C ÷ 70°C)
Weight	0.5 lb. (230 gr.)


1. Connect the two polls of the Meter input cable to the meter using a self-stripping insulated connector (like 3MScotchlock or equivalent).
2. **Polarity:** if a 'Passive Pulse' type meter is connected, there is no polarity so the wires can be connected in any order, if an 'Active Pulse' type meter is connected, there is polarity and the wires have to be connected in the following order: Red wire to the POSITIVE (+) poll and the Black wire to the NEGATIVE (-) poll, (see figure 4).

THE MANUFACTURER IS NOT RESPONSIBLE FOR ANY RADIO OR TV INTERFERENCE CAUSED BY UNAUTHORIZED MODIFICATIONS TO THIS EQUIPMENT. SUCH MODIFICATIONS COULD VOID THE USER'S AUTHORITY TO OPERATE THE EQUIPMENT.

## RF EXPOSURE INFORMATION

The antenna gain used with this transmitter should be 0dBi or less. All persons should maintain a minimum safe separation distance of 45.45 cm (0.4545 m)

## Documents / Resources

	<p><a href="#">KP Electronic Systems MT2W-MK Long Range Synthesized Radio Meter Transmitter</a> [pdf] Instruction Manual KPMT2W-MK, KPMT2WMK, H78KPMT2W-MK, H78KPMT2WMK, MT2W-MK, Long Range Synthesized Radio Meter Transmitter, MT2W-MK Long Range Synthesized Radio Meter Transmitter</p>
---	--

## References

- [info@kpsystems.com](mailto:info@kpsystems.com)
- [Home | KPS](#)