

KOSTAL

KOSTAL Plenticore
G3 BackUp Switch



KOSTAL Plenticore G3 BackUp Switch Installation Guide

[Home](#) » [KOSTAL](#) » KOSTAL Plenticore G3 BackUp Switch Installation Guide 

Contents

- [1 KOSTAL Plenticore G3 BackUp Switch](#)
- [2 Product Usage Instructions](#)
- [3 System overview](#)
- [4 Activate BackUp Switch in the inverter](#)
- [5 Documents / Resources](#)
 - [5.1 References](#)
- [6 Related Posts](#)

KOSTAL

KOSTAL Plenticore G3 BackUp Switch



Specifications:

- Product: KOSTAL BackUp Switch
- Compatibility: Works with KOSTAL inverters and batteries
- Connectivity: RS485 Modbus, LAN
- Installation: Requires N-separation for some configurations

Product Usage Instructions

Switching off Inverter and Battery:

To switch off the inverter and battery, follow these steps:

1. Toggle the switches to the “OFF” position for both the inverter and battery.

Activating BackUp Switch:

To activate the BackUp Switch within the inverter, follow these steps:

1. Access the service menu on the inverter.
2. Navigate to “Operating mode” and select “Manual switching”.
3. Activate the BackUp Switch within the menu.

FAQ:

1. Q: Do I need to perform N-separation for my installation?

A: N-separation is required for certain configurations. Please refer to the installation manual for specific guidance based on your setup.

2. Q: How do I know if the BackUp Switch is activated?

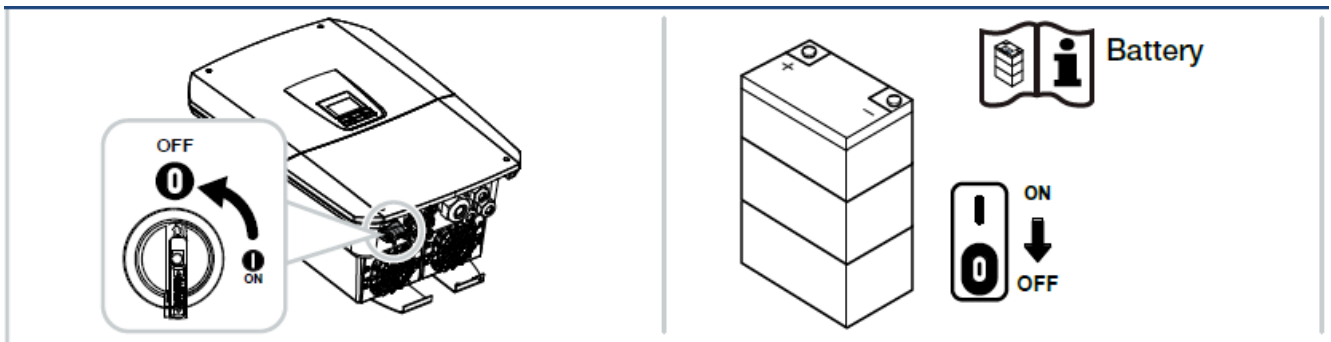
A: You can verify if the BackUp Switch is activated by checking the status indicators on the inverter.

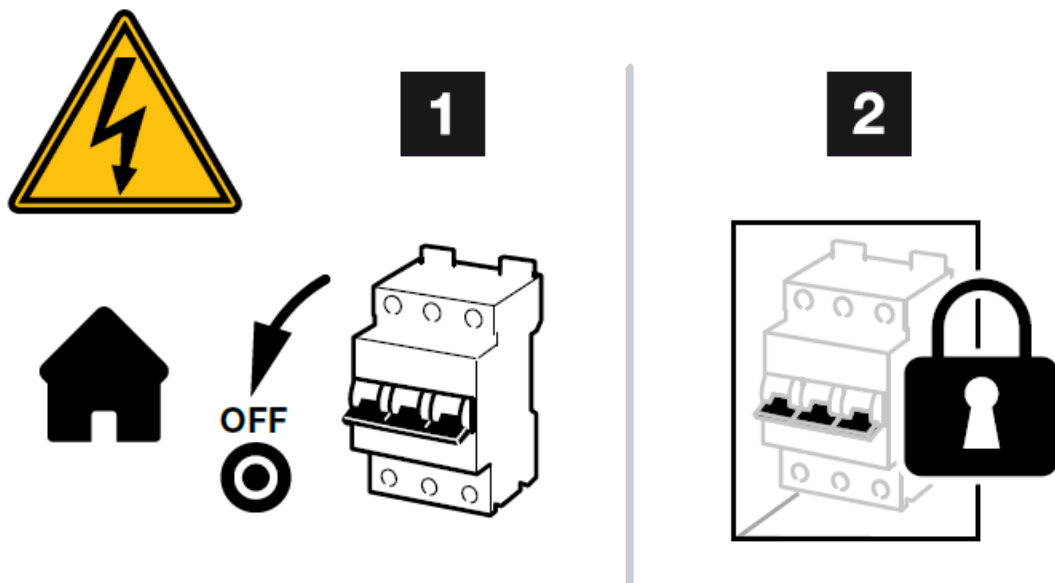


Electric current – Danger to life !

This product must be installed and maintained by competent and authorised personnel only, under strict observance of any relevant standards and legal requirements where appropriate. The technical specification on the switch label must not be exceeded.

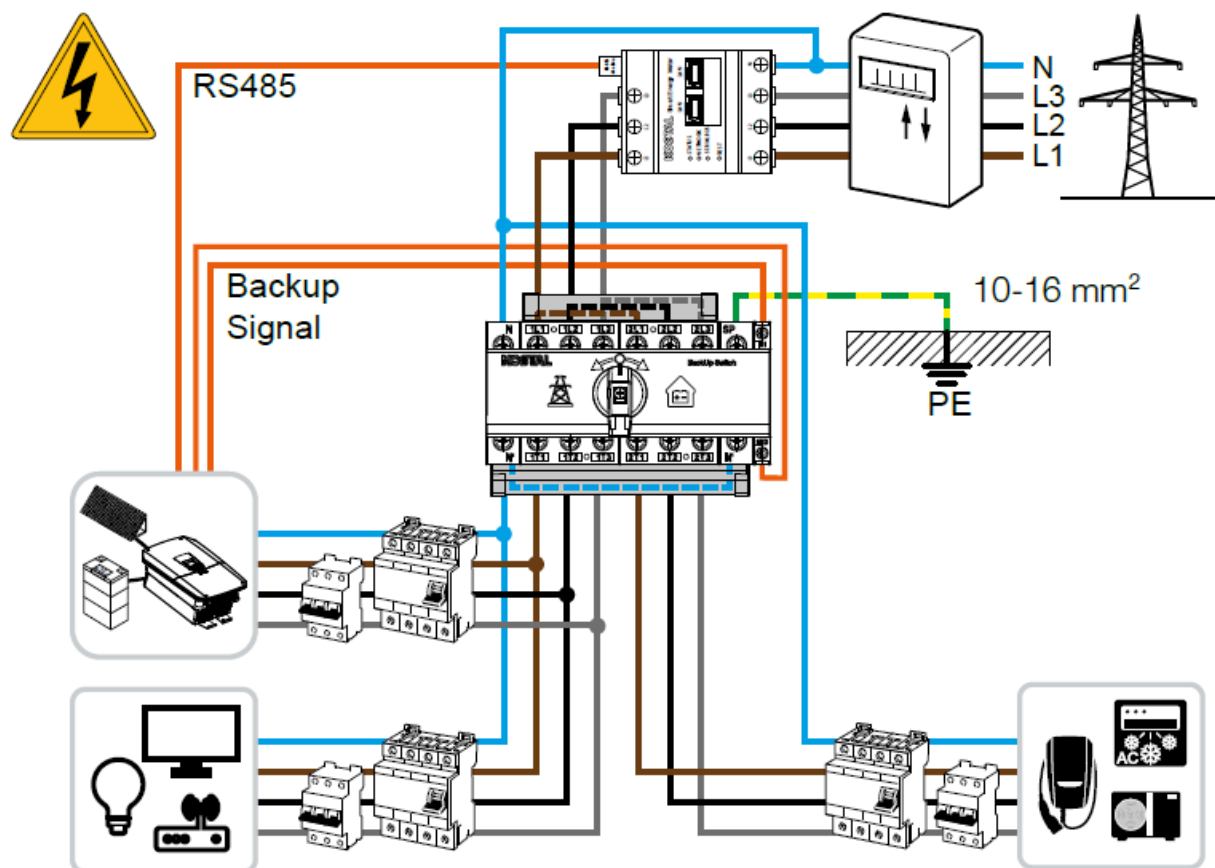
Switch off inverter and battery



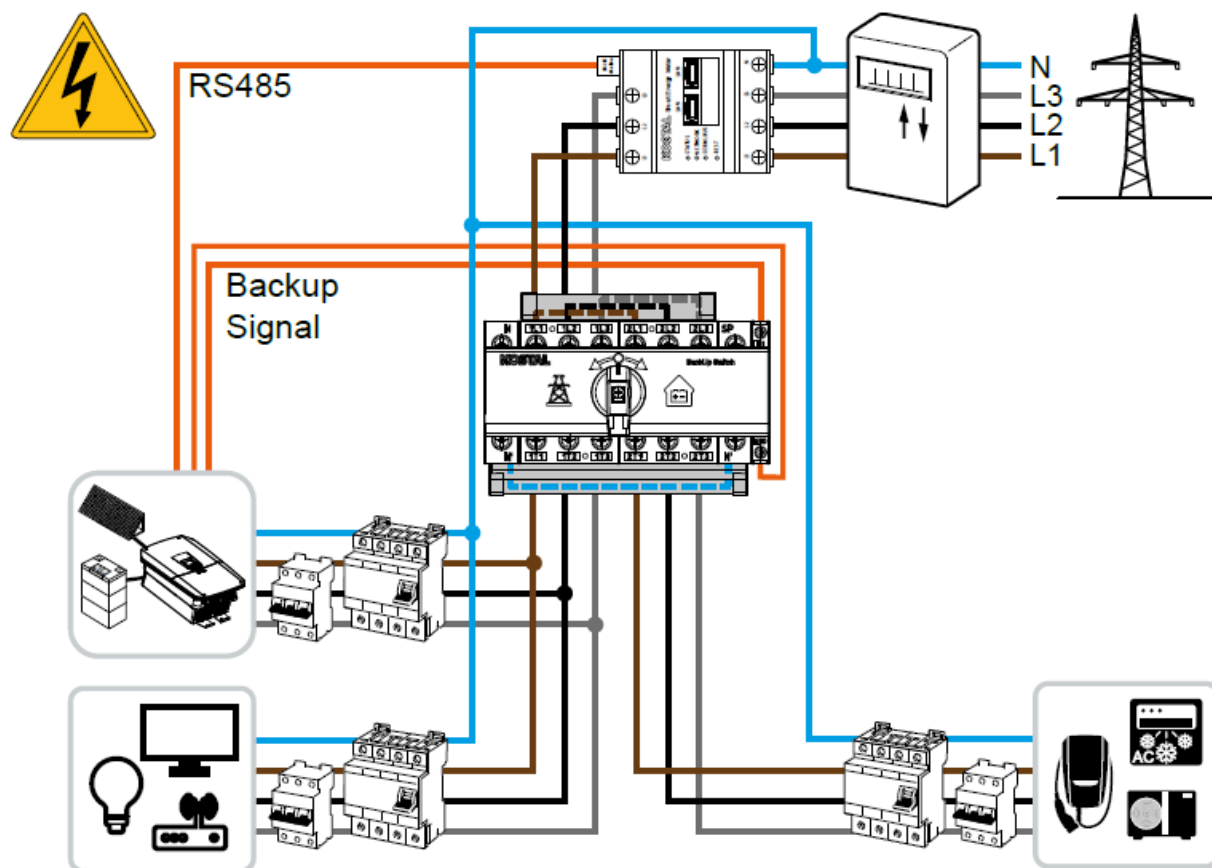


System overview

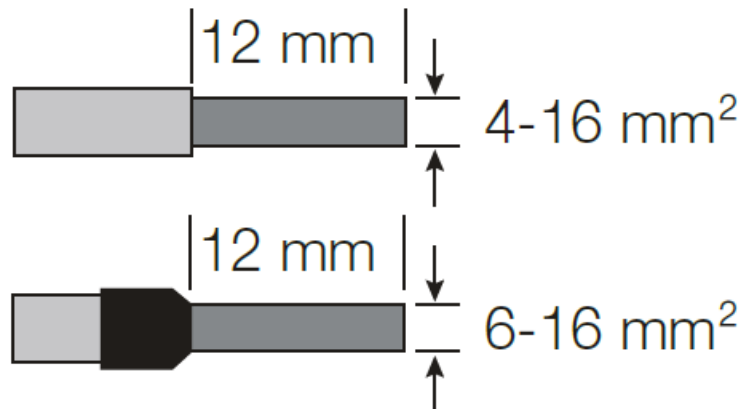
Please check about the required connection variant with your grid operator
N-separation, Neutral point treatment required

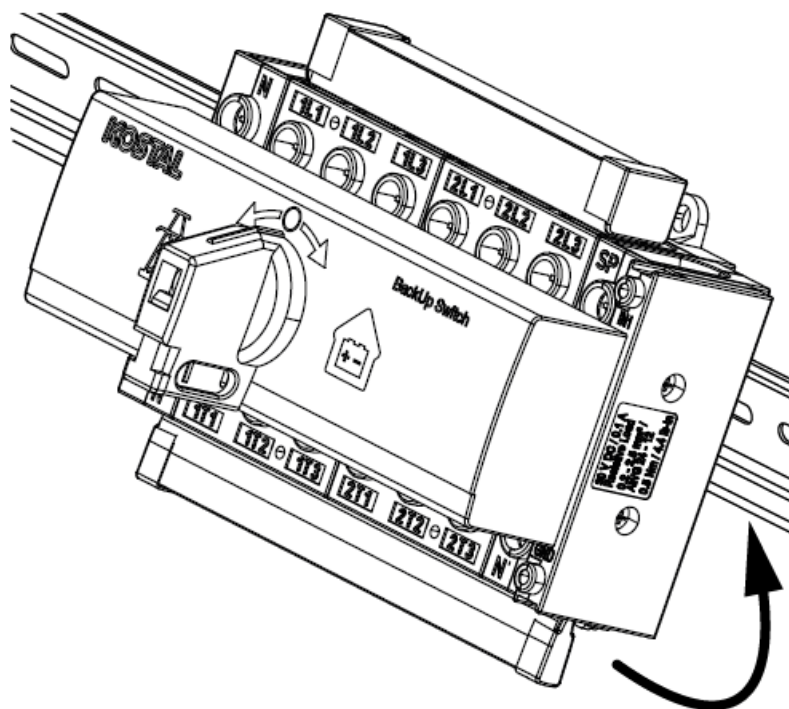


Consumers in grid operation and backup operation
Consumers in grid operation
No N-separation, Neutral point treatment not required



Consumers in grid operation and backup operation
 Consumers in grid operation






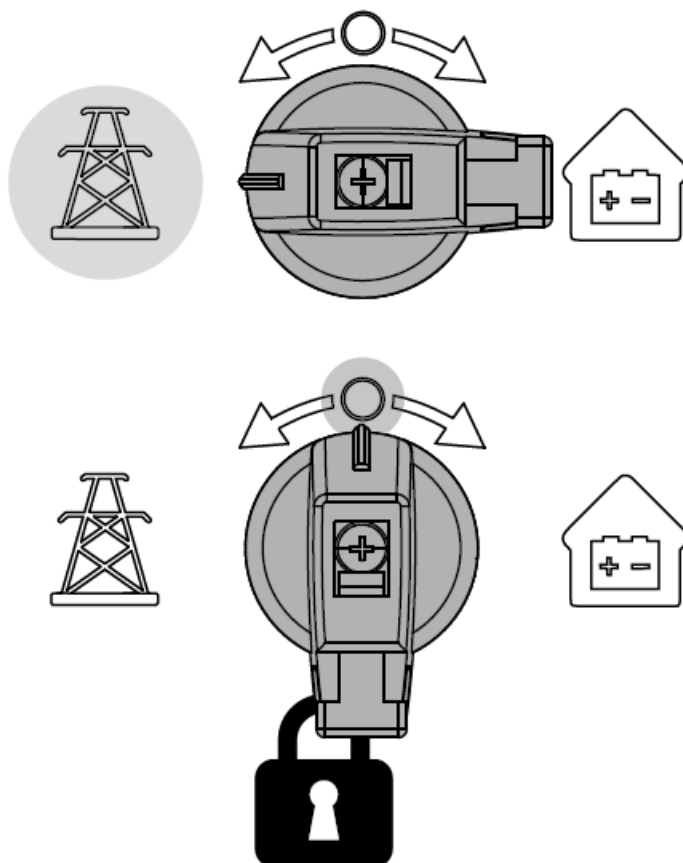
Max. 400 V / 63 A

AC Connection cross-section:

Solid or stranded 6-16 mm²

Fine or stranded with ferrule 4-16 mm²

Check tightening torque of 1,8 Nm 



All consumers connected to the public grid. Max. 400 V / 63 A

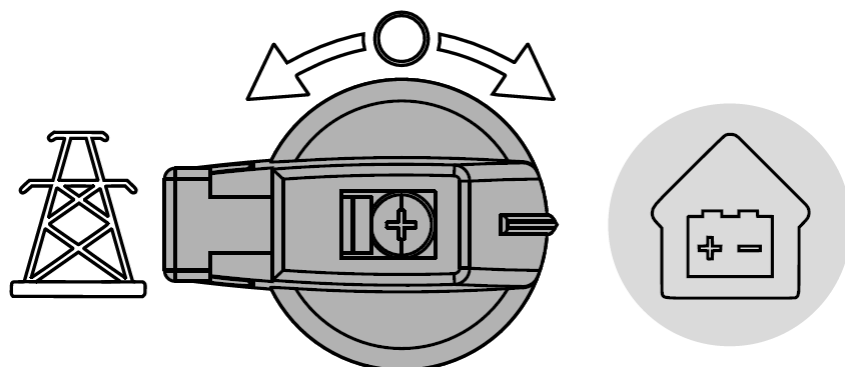
AC Connection cross-section:

Solid or stranded 6-16 mm²

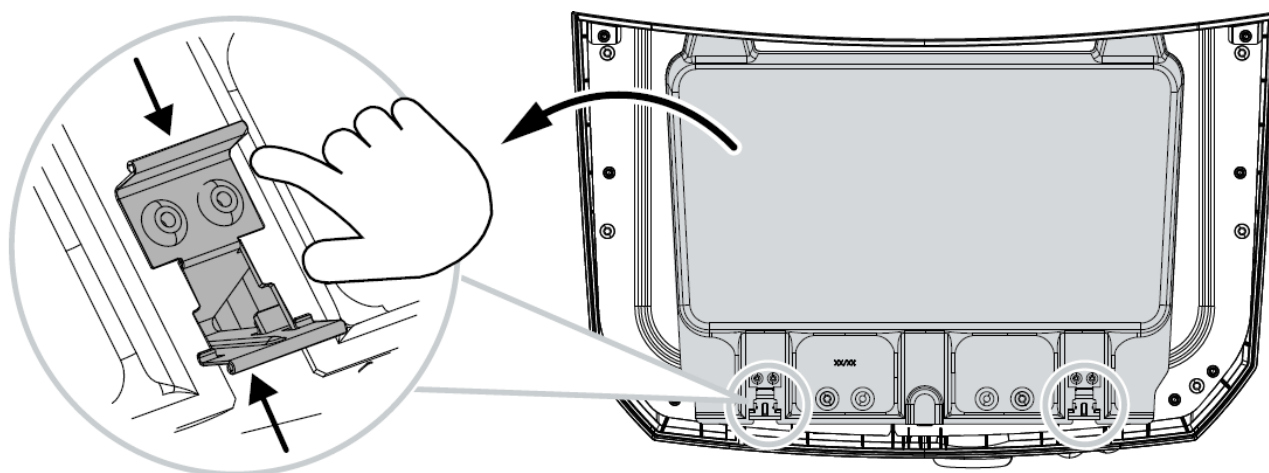
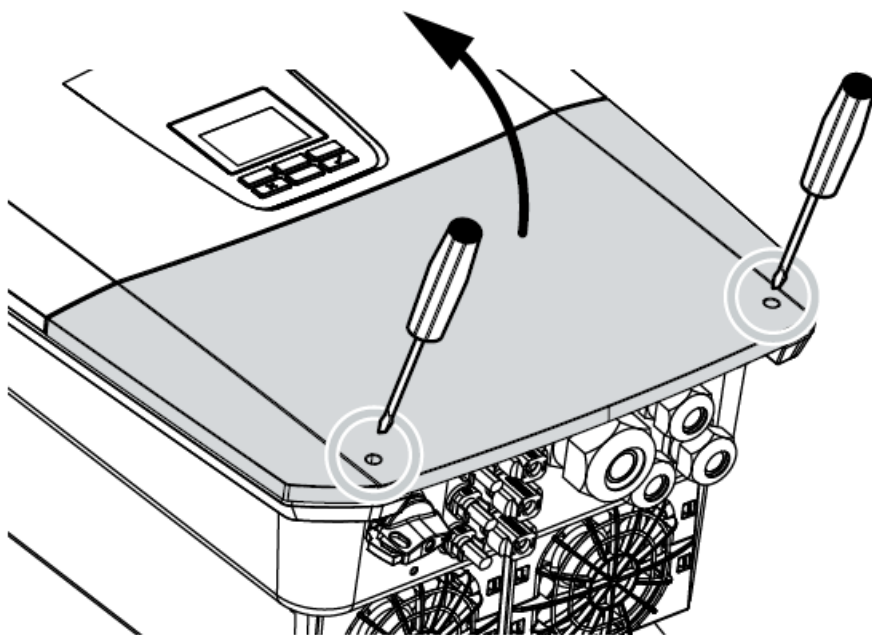
Fine or stranded with ferrule 4-16 mm²

Check tightening torque of 1,8 Nm

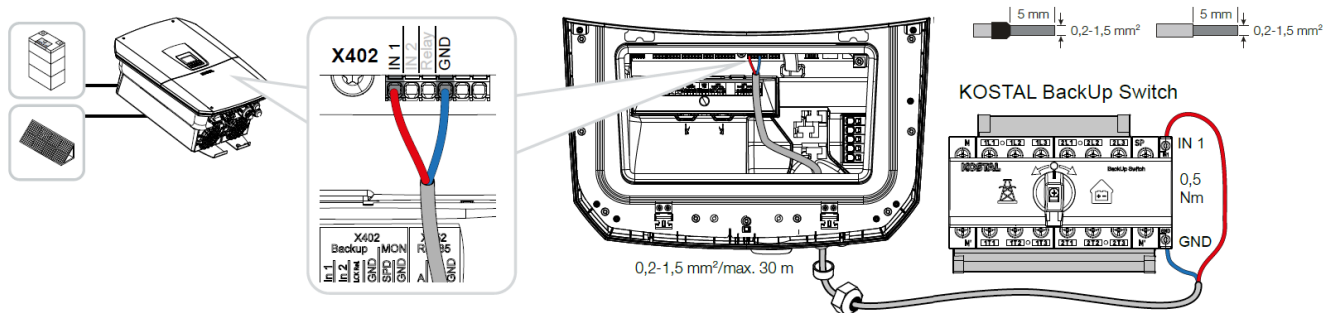
Consumers in the backup mode branch are disconnected from the public grid. Consumers in the grid operation branch remain connected to the public grid.



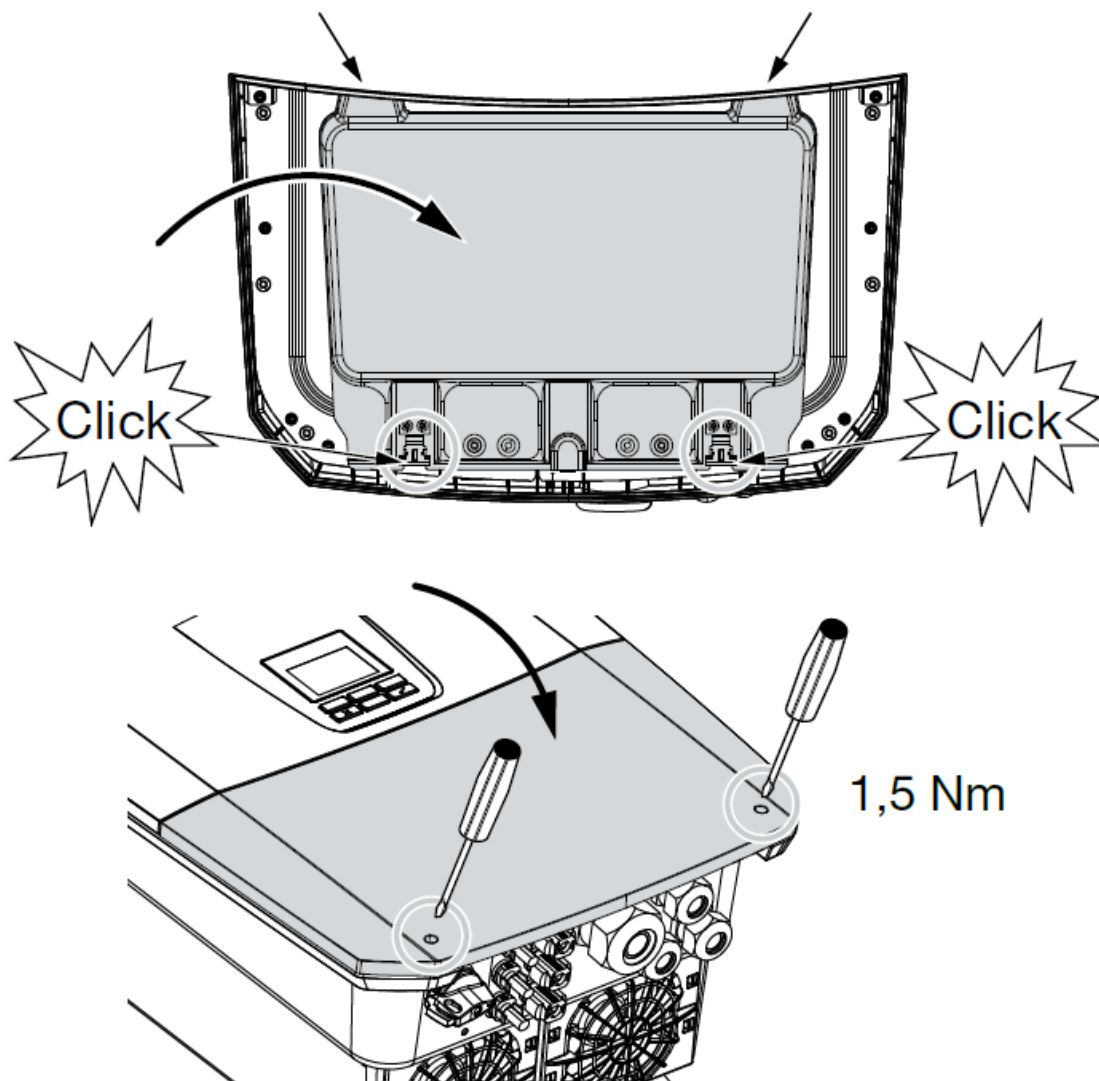
Consumers in the backup mode branch are disconnected from the public grid. Loads in the grid operation branch remain connected to the public grid. Inverter starts backup operation.

Open inverter

Connecting the BackUp Switch signal line

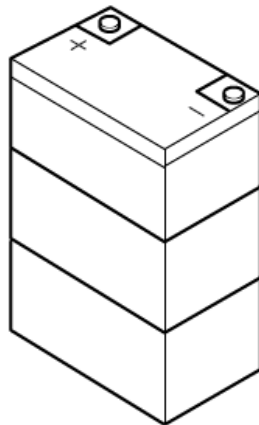
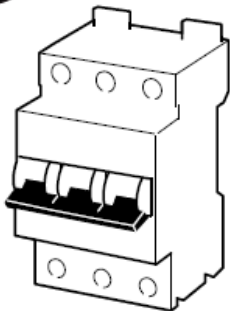


Close inverter



Switch on inverter

ON



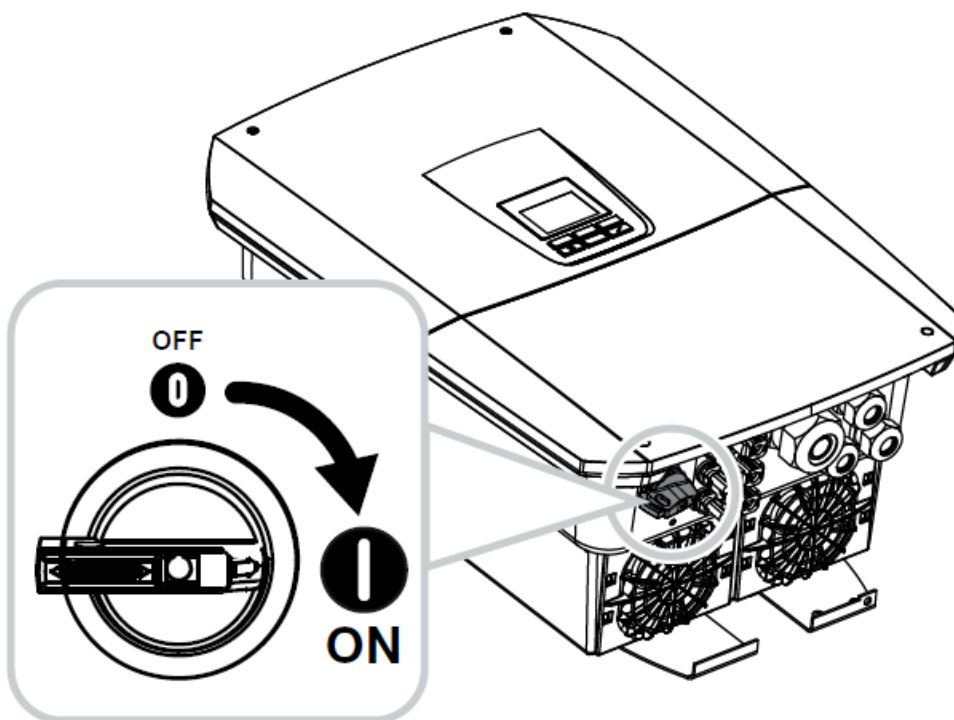
Battery



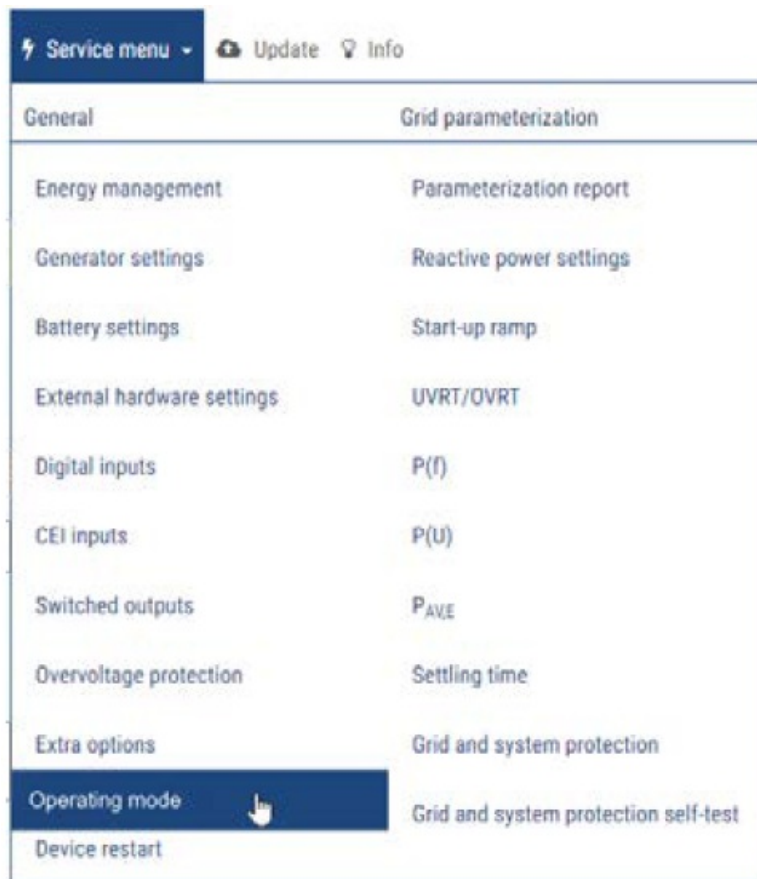
ON



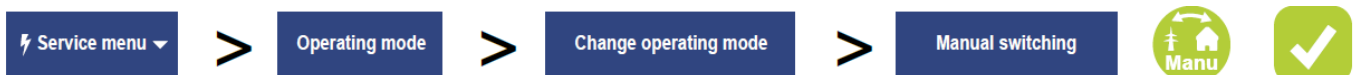
OFF



Activate BackUp Switch in the inverter



After installation, the KOSTAL BackUp Switch must be added to the system via Change operating mode. The Operating mode can only be changed by an installer.



www.kostal-solar-electric.com

04/2024 – DOC03316381-0002 – Contact: KOSTAL Solar Electric GmbH, Hanferstr. 6, 79108 Freiburg i. Br., Germany, Tel. +49 761 477 44 – 100, Fax +49 761 477 44 – 111, www.kostal-solar-electric.com Subject to technical changes, errors excepted. You can find current information at www.kostal-solar-electric.com.

Documents / Resources

	<p>KOSTAL Plenticore G3 BackUp Switch [pdf] Installation Guide Plenticore G3 BackUp Switch, G3 BackUp Switch, BackUp Switch</p>
---	---

References

- [Home | Solar Electric](#)
- [User Manual](#)

