



KOSS UTILITYBTA Bluetooth Adapter User Guide

July 24,
2025

Contents [[hide](#)]

[1 USER GUIDE](#)

[2 LEGAL](#)

[2.1 Utility BT Adapter](#)

[2.1.1 FCC WARNING](#)

[2.1.2 RF Exposure Statement](#)

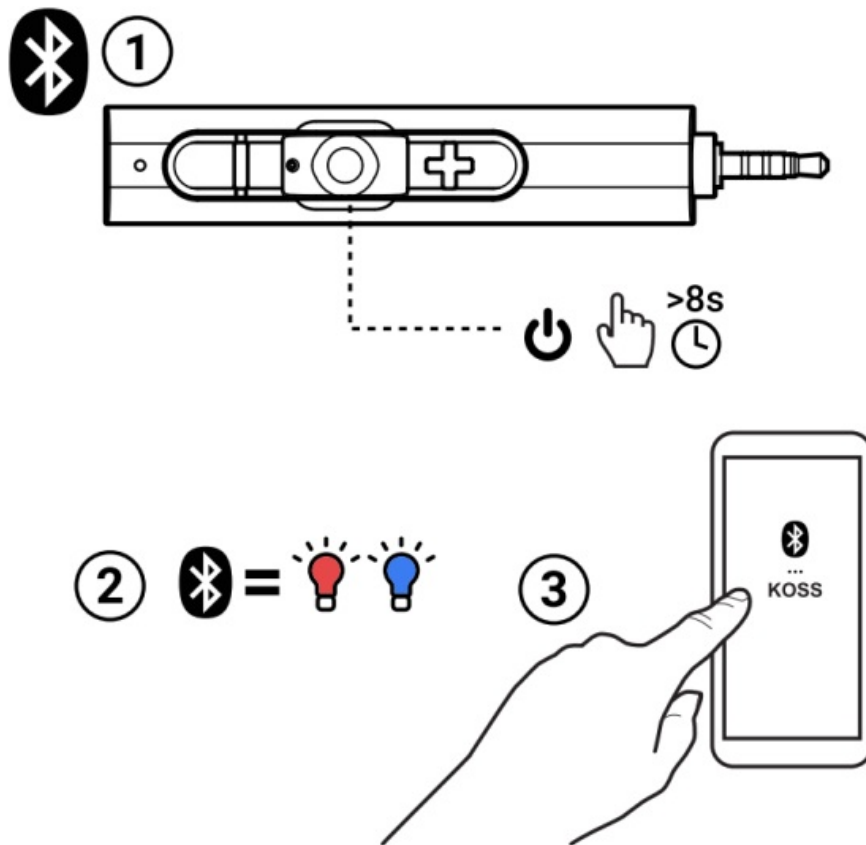
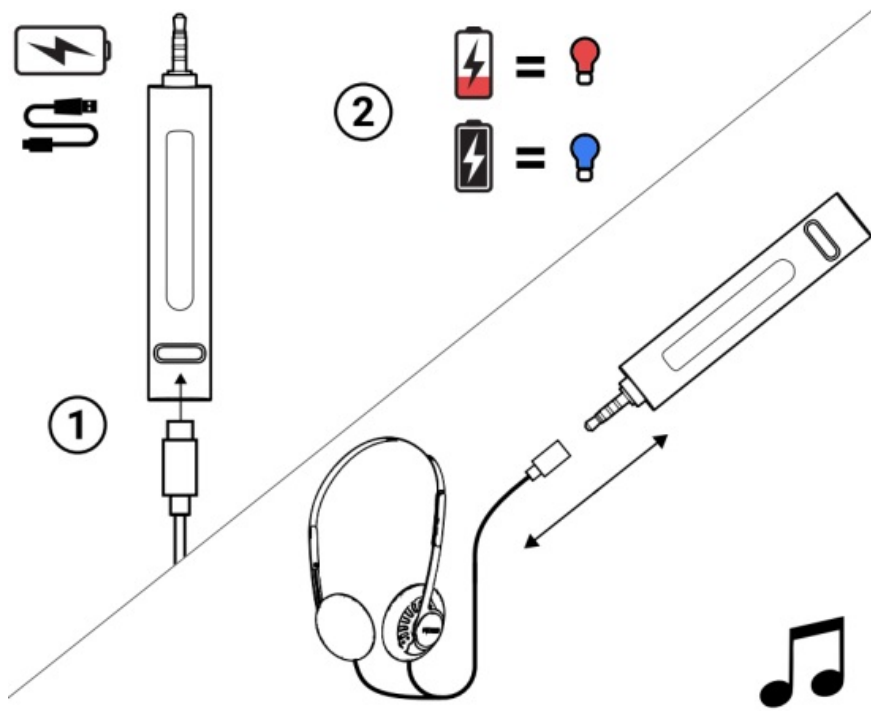
[2.2 stereophones](#)

[3 Documents / Resources](#)

[3.1 References](#)

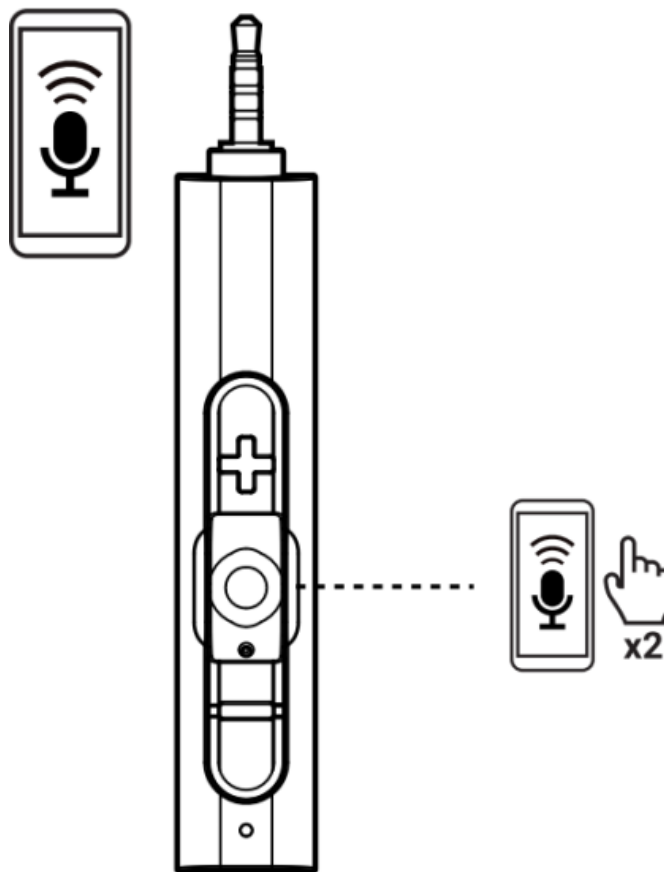
USER GUIDE











LEGAL

 **KOSS**

Utility BT Adapter

 **Bluetooth®**

CE Koss Corporation hereby declares that this wireless device, Bluetooth Headset, Model: KOSS UTILITY BTA is in compliance with the essential requirements and other relevant provisions of directive 2014/53/EU. A copy of the Declaration of Conformity is available at www.koss.com/compliance



Disposal Information (WEEE) This product is classified under the Waste Electrical and Electronic Equipment (WEEE) Directive and is subject to recycling. Do not dispose of this product as unsorted municipal waste. Instead, it should be collected separately and recycled in accordance with local regulations to avoid potential negative impacts on the environment and human health. For more information on recycling this product,

please contact your local city office, your household waste disposal service, or the shop where you purchased the product.

This device complies with Industry Canada license-exempt RSS standard(s). Operation is subject to the following two conditions: (1) This device may not cause interference. (2) This device must accept any interference, including interference that may cause undesired operation of the device.

IC:10021A-UTILITYBTA

Compliance documents available at www.koss.com/compliance

IC: 10021A-UTILITYBTA

FCC ID: L76-UTILITYBTA



DC Input: 5V , 80mA

Battery Capacity: 100mAh, 0.37Wh

KOSS UTILITY BTA Made in China / Printed in China

FCC WARNING

This device complies with part 15 of the FCC Rules. Operation is subject to the following two conditions: (1) this device may not cause harmful interference, and (2) this device must accept any interference received, including interference that may cause undesired operation. This equipment has been tested and found to comply with the limits for a Class B digital device, pursuant to part 15 of the FCC Rules. These limits are designed to provide reasonable protection against harmful interference in a residential installation. This equipment generates, uses and can radiate radio frequency energy and, if not installed and used in accordance with the instructions, may cause harmful interference to radio communications. However, there is no guarantee that interference will not occur in a particular installation. If this equipment does cause harmful interference to radio or television reception, which can be determined by turning the equipment off and on, the user is encouraged to try to correct the interference by one or more of the following

measures:

- Reorient or relocate the receiving antenna.
- Increase the separation between the equipment and receiver.
- Connect the equipment into an outlet on a circuit different from that to which the receiver is connected.
- Consult the dealer or an experienced radio/TV technician for help.

Any changes or modifications not expressly approved by the party responsible for compliance could void the user's authority to operate the equipment.

RF Exposure Statement

This device has been evaluated to meet general RF exposure requirement. This device can be used in portable exposure condition without restriction.



Koss Corporation • 4129 N. Port Washington Ave.

Milwaukee, WI 53212 / USA • 1-800-USA-KOSS (1.[800-872-5677](tel:800-872-5677))

Koss-UK Ltd., Registered Office Address One New Change, London, EC4M 9AF / UK

Koss Corp B.V. Postbus 9002, 2300 PA, Leiden / The Netherlands

For warranty information visit www.koss.com.

Product features and specifications are subject to change without notice.

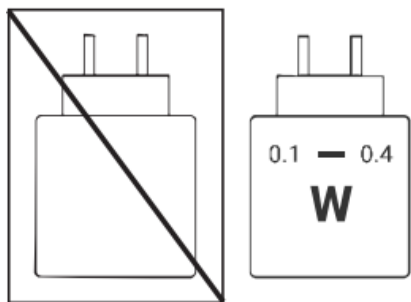
Product may vary from images shown.

Battery Maintenance:

To prolong battery lifespan, fully charge the product at least once per month. Do not use or store the product in hot ($>45^{\circ}\text{C}$) or cold ($<0^{\circ}\text{C}$) temperatures. Battery life varies by use and settings.

The power delivered by the charger must be between min [0.1] Watts required by the

radio equipment, and max [0.4]Watts in order to achieve the maximum charging speed.



The Sound of Koss **Hearing is Believing**



WARNING

Please read these safety warnings carefully to ensure your personal safety and prevent property damage.

- Do not leave your devices in close proximity to open flames or extreme sources of heat.
- Do not expose your devices to liquid or extreme humidity.
- Do not drop, disassemble, microwave, incinerate or paint your devices.
- Do not expose your devices to extreme high or low temperatures.
- Clean your devices with a clean, dry cloth.
- Do not leave your devices in direct sunlight for an extended period of time.
- Do not dispose of your devices in a fire. The battery could explode causing injury or death.
- Do not attempt to clean your devices while they are being charged.
- Only charge your devices with the components supplied with the devices.
- Do not attempt to disable the devices, chargers or cables or force open the built-in battery.
- Do not charge your devices in damp areas or in extreme high or low temperatures.
- Do not leave or store the devices or any of their accessories near or over your automobile's airbags, because serious injury may result



BATTERY WARNING

- Do not disassemble, strike, crush or put the battery into fire. Do not expose the battery

to conductive materials, liquids, fire, or high temperatures.

- Do not allow metal objects to touch the two poles of the battery. Do not continue to use the battery if it has bulges, leaks, discoloration, odors, or any other abnormality
- Do not use the battery after it has been submerged in water
- If the battery is used improperly, it may explode or leak, causing burns and other personal injuries. If the battery leaks, it should be carefully disposed of according to the local laws and regulations concerning battery disposal.



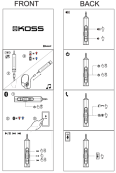
CE WARNING Listen at moderate volumes to avoid hearing damage.

“1-YEAR LIMITED WARRANTY If purchased outside the U.S., contact the local Koss Authorized Dealer or service.eu@koss.com for details. – KOSS, KOSS and Design, HEARING IS BELIEVING: PORTA PRO, and THE SOUND OF KOSS are Registered in U.S. Patent and Trademark Office and are trademarks of Koss Corporation in other countries. Patent Information: www.koss.com/patent – Product features and specifications are subject to change without notice. Product may vary from images shown.

SPECIFICATIONS – Koss Corporation Model: KOSS UTILITY BTA – Input: 5V , 80mA or powered by (3,7V, 100mAh) – Li-Ion Polymer Battery -Printed in China – Made in China – Bluetooth Support Standard: 802.15.1- Frequency Range: 2402-2480MHz – Max. RF Output Power: 1.29dBm (EIRP) – Type of Modulation: GFSK, Tr/4 DQPSK. 8DPSK – Data Rate: 1Mbps, 2Mbps. 3Mbps – Quantity of Channels: 79 – LITHIUM ION BATTERY – Battery Manufacturer – Dongguan Encore Energy Co., Ltd. – Model! EN500930, 3.7V, 100mAh – Building 1, 12 Sanjiang Industrial Zone Road. Hengli Town. Dongguan City, Guangdong Province, China – BATTERY MAINTENANCE: To prolong battery lifespan, fully charge the product at least once per month, Do not use or store the product in hot (>45°C) or cold (<0°C) temperatures. Battery life varies by use and settings.

Documents / Resources

USER GUIDE



[KOSS UTILITYBTA Bluetooth Adapter \[pdf\]](#) User Guide

UTILITYBTA, UTILITYBTA Bluetooth Adapter, Bluetooth Adapter, Adapter

References

- [User Manual](#)

📁 KOSS 🔍 Adapter, Bluetooth Adapter, KOSS, UTILITYBTA, UTILITYBTA Bluetooth Adapter

Leave a comment

Your email address will not be published. Required fields are marked *

Comment *

Name

Email

Website

☐ Save my name, email, and website in this browser for the next time I comment.

[Post Comment](#)

Search:

[Search](#)

[Manuals+](#) | [Upload](#) | [Deep Search](#) | [Privacy Policy](#) | [@manuals.plus](#) | [YouTube](#)

This website is an independent publication and is neither affiliated with nor endorsed by any of the trademark owners. The "Bluetooth®" word mark and logos are registered trademarks owned by Bluetooth SIG, Inc. The "Wi-Fi®" word mark and logos are registered trademarks owned by the Wi-Fi Alliance. Any use of these marks on this website does not imply any affiliation with or endorsement.